

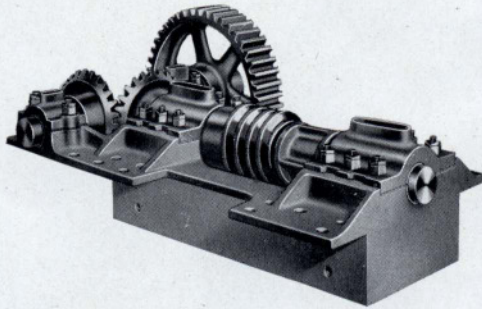
SIZES AND COMBINATIONS

McGiffert Loaders are built in various sizes and combinations to meet the special conditions of the operation where they are to be used.

That the very best results may be obtained, it is the desire of the Clyde Iron Works Sales Co. that their representative be permitted to visit the operation, survey conditions and

confer with officials of the company about the specific problems involved.

Without placing any obligations whatever upon the purchaser, the Clyde Company invites this privilege and opportunity. A thorough understanding of working conditions makes possible a more effective and more economical proposition.



Solid cast steel boxes for mounting worm gear mechanism to raise and lower the trucks on the McGiffert Loader.

End of McGiffert Loader Section

