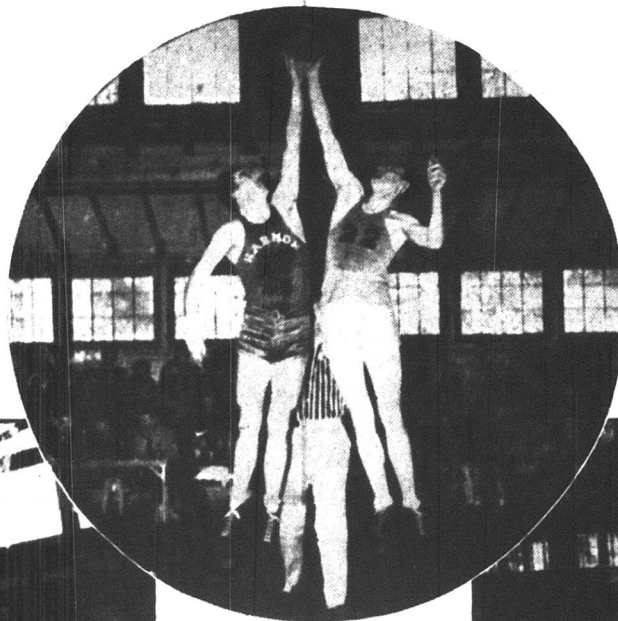


Meet the Champions...

With justified pride, Camp Claiborne is hailing its mighty men of the wooden way for returning this week from Longview, Texas, after winning the Eighth Service Command Basketball Tournament at Harmon General Hospital.

That the Engineers have a great team was evidenced by their ability to win three straight games, and then, after dropping the next two contests, rise to the supreme test of defeating a top-

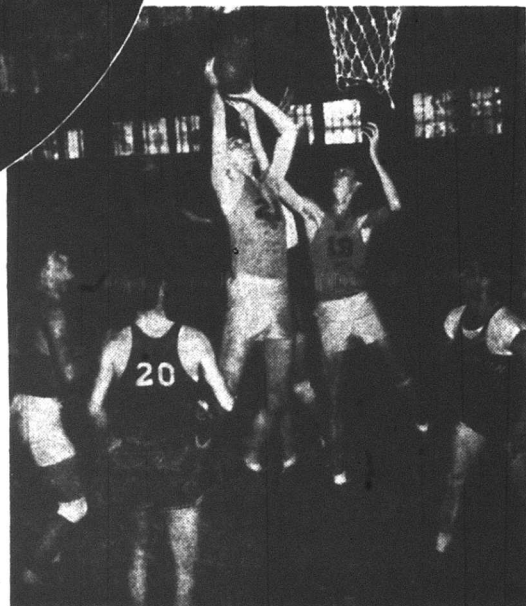


flight Fort Bliss, Texas, five 42-25, in the tilt that decided the championship.

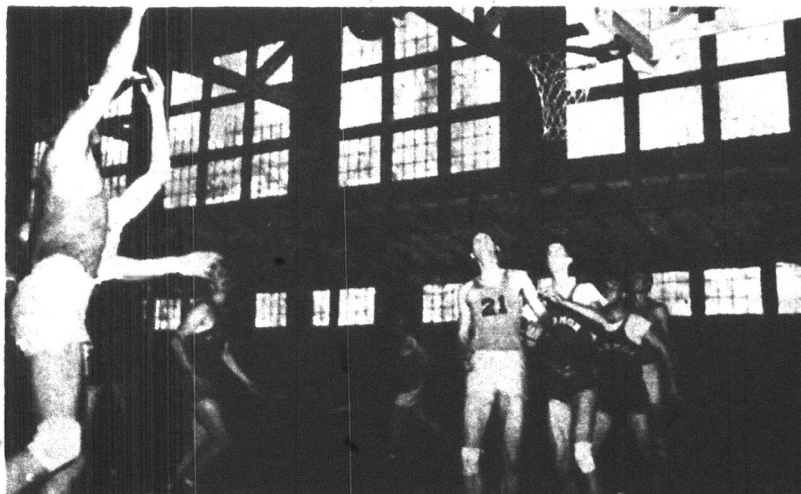
In these two pages of pictures by PFC Rudolph F. Opatovsky, who with T/4 Thomas W. Burke represented The Claiborne News at the tournament, the Engineers are seen on the Harmon Hospital playing floor as well as in personal sidelights such as the enlisted detachment's mess hall, in the dressing room and in the barracks during a coaching session.



PLAY BALL! Winfred Williams (right), Claiborne center, and Bob Gerber, Harmon General Hospital's all-around ace, leap high in the air at the top of the opening game in the Harmon gym. Williams tapped the ball to a teammate a split second after this picture was taken. The Engineers swamped the Harmonians, 63-43.



IT'S A SCORE! The ball finds its way for another Claiborne basket in the Harmon Hospital game as Claude Stoutamier, forward, catches the ball on a rebound and tosses it high toward the hoop. That's teammate Johnny Rayz (standing by with Malseed (20), of Harmon, while another Hospital player, McDorold (18), tries to vain to break up the play.



AFTER A REBOUND. This is typical of how Jerry Gilman (21) and Claude Stoutamier (19) were right on the job when it came to snaring the ball off the backboard to cash in on two-point advantages for Claiborne. Johnny Rayz, on the left, is set to get in on the play, while Malseed (20) and Andy Gamberdella, both of Harmon Hospital, are caught flat-footed.

TOUGH LUCK, JOHNNY! Here's Johnny Rayz, the Claiborne high-scoring star, heaving one from his favorite position, the right corner of the court near the basket. He missed this one, however, but it demonstrates the follow-through style of a natural athlete. Jerry Gilman, Engineers guard, is waiting under the net with group of Harmon Hospital men. That's Harmon's Bob Gerber loping toward the basket in the background.