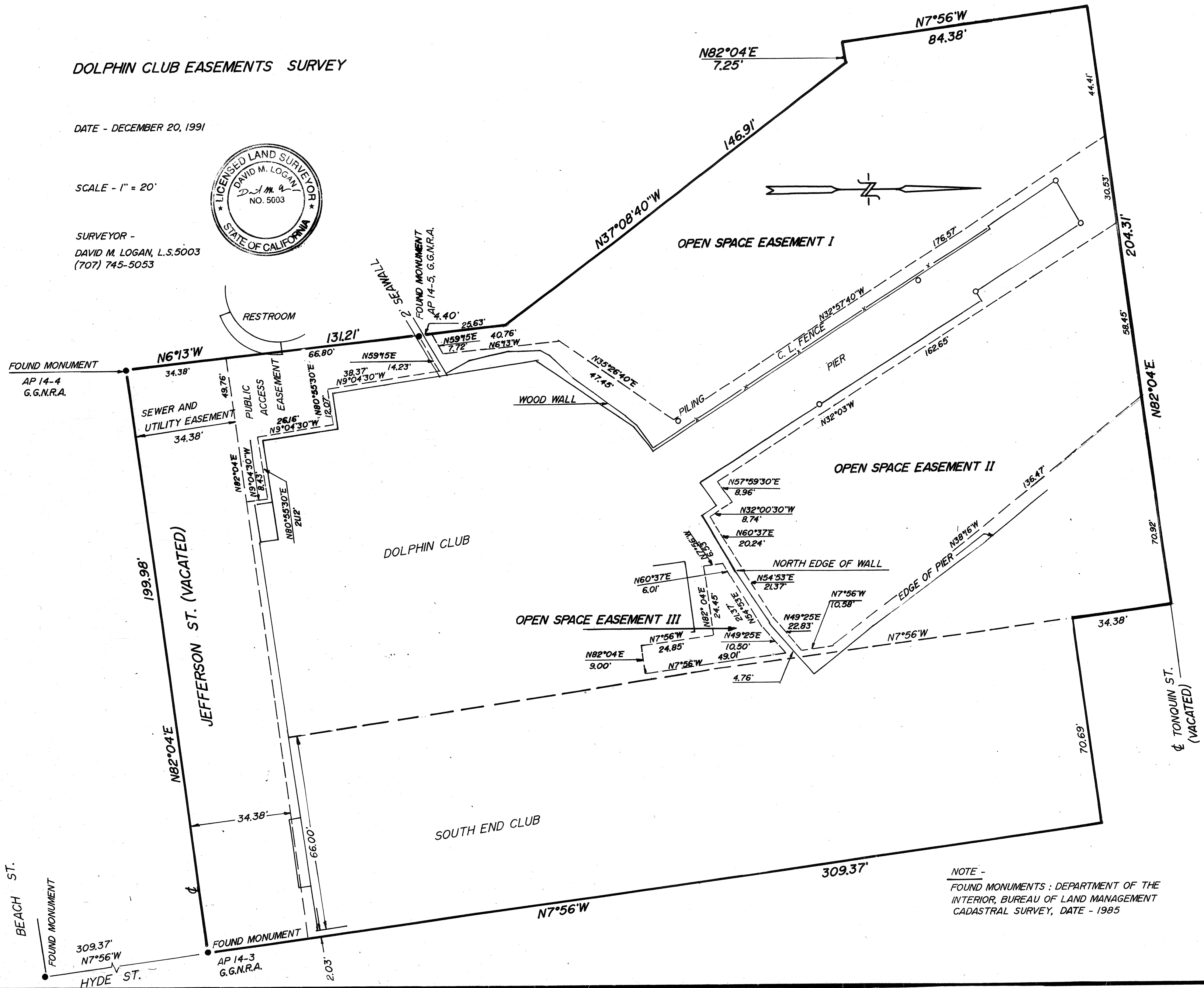


DOLPHIN CLUB EASEMENTS SURVEY

DATE - DECEMBER 20, 1991

SCALE - 1" = 20'

SURVEYOR -
DAVID M. LOGAN, L.S. 5003
(707) 745-5053



NOTE -
FOUND MONUMENTS: DEPARTMENT OF THE
INTERIOR, BUREAU OF LAND MANAGEMENT
CADASTRAL SURVEY, DATE - 1985