

Peter Drino will be managing the Dolphin Club's effort this year to reclaim our triathlon glory. So start training and mark your calendars for October 20, 2002.

DOLPHONICS DEBUT

If you had attended the Pilots and Swimmers' Appreciation Dinner last November, you would have been rightfully surprised and delightfully entertained with the downright enthusiastic tunes sung by nine of the bravest DC'ers, the Dolphonics.

With the festive air around all who were celebrating yet another fine year of swimming and rowing at our great old club, words sung to the tune of "Sea Cruise"

*I got to get to knockin'
Get my cap off the rack
I gotta have a pilot
Cauz I swim on my back
So be my guest just act on that whim
Won't you let me take you on a bay swim*

And, "Blue Moon" with love to roast our own Rico "Moon" Passanisi

*Blue Moon, you saw the Club as our home
Our suits were hanging from pipes
Without a locker of our own*

*Blue Moon, more than Blue trim you were there for
You heard us saying a prayer for
As every morning you care for*

Belted out across the bay while being accompanied by beaten rhythm on a blue paint can, these words were sincerely dedicated and with only 30 minutes of rehearsal time!



Members of the Dolphonics (from left to right): John, "Blues-Man" Theede; Barry "Bay-Cruisin" Christian; George "Capn Crawdaddy" Robin; Betty "in the Key of B-Flat" Kohlenberg; Marty "Mama-Dog Paddln" Robin; Anita "Amazin Harmonic" Holmquist; Dolores "Doin It Right" Meehan; Mary "Attagirl" Alex and Jackie "A-touch-of-Grace" Merovich. (Photo by Maximina (Kiko) Fagan, daughter of Jim Fagan)

– Marty Robin

MEN'S LOCKER ASSIGNMENTS

Assignments and upgrades are based on seniority and type of locker, if any, currently assigned. The following locker assignments are considered permanent and are not automatically upgraded unless specifically requested:

Main Room (blue)

- large blue metal free standing lockers (74-153, 166-179, 216-241)
- large built-in blue wood lockers (1-73, 200-215)

Lower Rooms (white)

- All lockers (417 – 496 & A401 – A482)

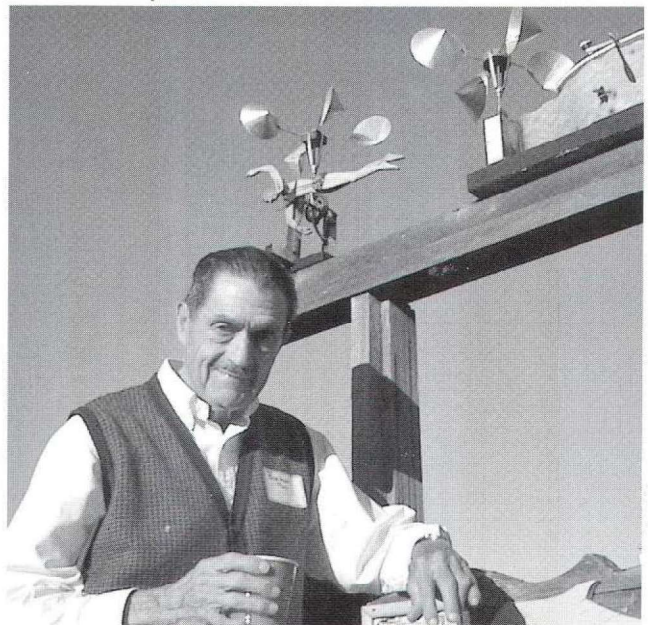
The following lockers are automatically considered for upgrade unless specifically requested to stay put. Upgrades are based on seniority from among the following:

- Main Room (blue)
- Small blue metal wall lockers (154 – 161 & 250 – 271)
- Small built-in blue wood lockers (242 – 249)
- Large built-in white wood lockers (upper level) (300 – 374)
- Remodeled Locker Room (gray) (501 – 662)

Locker squatters will have their locks cut and contents removed. If your membership is terminated, you will lose your locker. If you reinstate, you will be assigned a new locker based upon your seniority and locker availability.

New member assignments based solely on seniority. Requests for changes in locker assignments should be made in writing to: Dolphin Club, Men's Locker Captain, David Zovickian, 502 Jefferson St., San Francisco, CA 94109.

–David Zovickian



Bob Hoff (1924 - 2002) and his whirligigs