

# LYONS' DISTRIBUTING CO.

WHOLESALE LOGGING EQUIPMENT & MILL SUPPLIES

---

Telephone 5911

Little Valley, N. Y.

Bulletin # 20  
July 17, 1960

Gentlemen:

We have had so many requests to continue issuing the bulletin that we have finally decided to go on, that it is a "MUST". The last issue was dated May 29th, 1959, a little over a year ago. The "FOR SALE" items that will be listed on these pages are an accumulation of the last fourteen months, so undoubtedly some of the items have been sold.

As you can see, we are still in business at the same old spot. Jim Curci is still our parts man, and we have a new salesman, Russ Smith, since our last issue. He is one of the Smith Brothers, "the one without a mustache", and lives at 19 Canterbury Road, Jamestown, New York, Phone 4814. Mr Smith covers Chautauqua, western Cattaraugus County and Northwestern Pennsylvania. He will be glad to work with you on any new equipment, and tell you where to buy used equipment.

The lumber business is continuing very good, especially with cherry and maple exceptionally strong. There has been a fall-off, though, in the Oak market.

The Cherry Springs Woodsmen Carnival is to be held August 5th and 6th. We expect a very large display of new woodworking equipment, machinery, and log handling equipment. You owe it to yourself to see this display and see how you may improve your out-put and increase your profits.

Our son, John, whom a lot of you know, is attending the University of Florida, and expects to graduate at mid-term. After that time we anticipate that he will be actively associated with the Lyons Distributing Company again.

There have been a number of new mills established in the past year with several handmills and a lot of new automatic equipment. Some mills are actually sawing 12 - 15 thousand board feet a day, with only three men in the mill. Several of the mills in this territory are going into the production of charcoal - others are installing Wilco Burners, automatic carriages, large edgers, power shift trimmers, sawdust and slab conveyors. Several of the mills have put in live decks, stop and loaders, niggers, and many of them have now installed green chains. It seems that the lumber industry is now growing up and the mill operator will have to modernize or get out of business.

At the same time, the truly portable mill is also moving into the picture because of the low cost of skidding, moves and ease of operation. The cost of the long distance skidding and long distance hauling are becoming prohibitive, except to the very large operator with the automatic mill, where he can cut the cost by using less manpower - that is where we come in. We think we handle the most complete line of equipment, both for the big automatic mill, the smaller automatic mill, and the completely portable mill. We don't sell horses, but the completely portable mills are often finding that skidding out the logs with horses for short distance requirements is by far less expensive than maintaining tractors. We will be very glad to figure with you on any kind of mill equipment, and as you know we try to sell the best at the most reasonable price.

On one of the following pages you will find a picture of The Wilco Burner, which are made in 10 different sizes, to meet all possible production requirements.

YOURS FOR BETTER LUMBER,

*W. H. Jacobson*

# PULPWOOD SPLITTING GUN

## Construction:

Made of alloy steel having a tensile strength of 100,000 pounds per square inch. Guns are made in two types as shown in the accompanying photograph. The square muzzle (left) results in a large percentage of wood being split in four pieces, while the round muzzle splitter splits the wood in two or more pieces.

\*\*\*\*\*

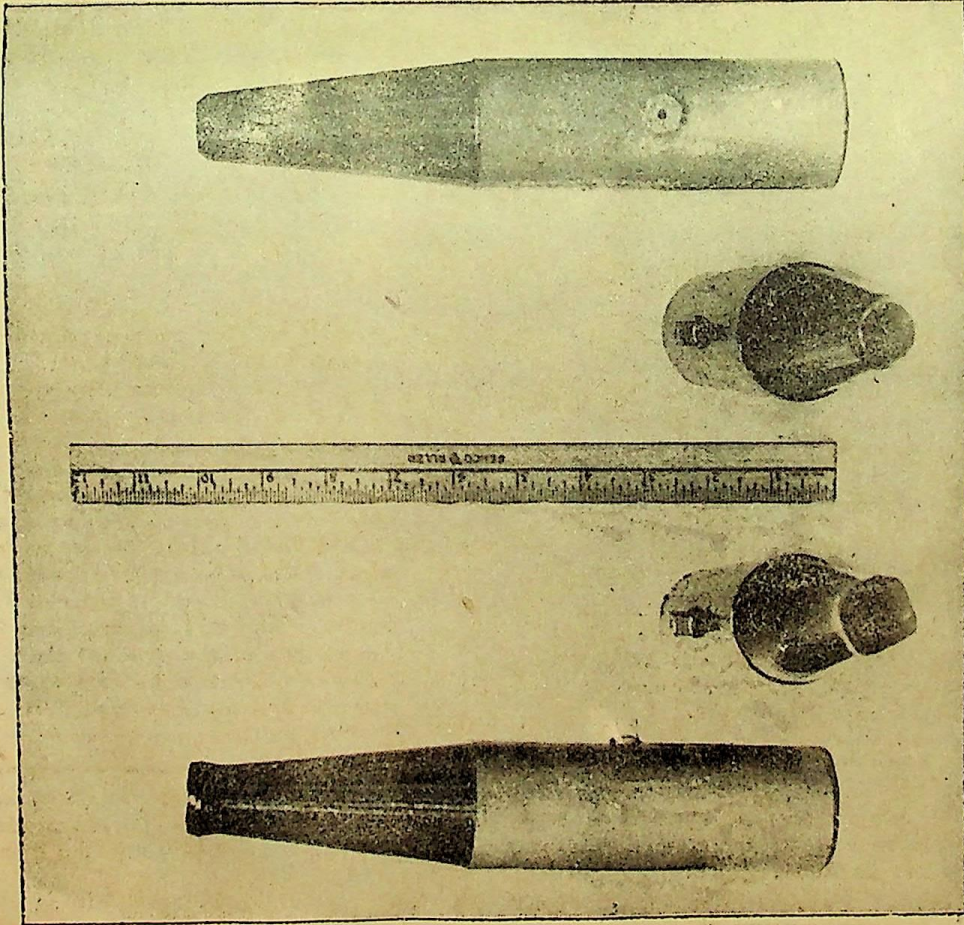
## Method of Using:

A charge of 3F blasting powder is placed in the barrel of the gun, and the end of the gun is driven into the log to a depth of 1 to 2 inches. A log about four feet long or a heavy stone is then placed against the end of the gun to absorb the recoil, and the charge of powder is ignited by a squib which is placed in the 1/8 inch hole provided. As wood splinters are sometimes thrown, the operator should stand some distance from the lighted gun behind any handy sheltering object.

\*\*\*\*\*

## Safety:

Splitters have been in daily use for a period of several years and no accidents have occurred from their use. It is necessary, however, to treat the splitter with the same caution one would use in handling a firearm, dynamite, buzz saws and other potentially dangerous tools. Don't be foolhardy. Handle the gun with respect and it will be found safe and dependable.



\*\*\*\*\*

**To you readers who are new on our list**

We have the bulletin printed six or eight times a year and mail out about 2700 copies, mostly to sawmill operators, loggers, chain saw dealers and woodworking plants. We will list most any kind of woodworking machinery, sawmill and logging equipment. We do ask that you price your items and give an honest description. We also must have a complete address and when possible, a phone number.

There is no charge for listing BUT if we help you sell any of the listed equipment we do expect you to send us 5% of the sale price. The price for a wanted to buy ad is \$5 for up to 5 lines and \$1 per line over 5. We work under an honor system as we believe most everybody is HONEST.

The following is a letter we received from one of our accounts receivable.

Dear Sirs:

We are getting welfare assistance and are not in any position to pay on any bills we owe and not enough to eat.

We don't even have any way of transportation, only walk to see about jobs and to get food, fuel and clothing. We don't even have a mailman and have to walk three miles to a post office. We have to move and no place to move yet. So you see we don't have any money to pay bills with and as soon as we get a job and can, we will pay this bill with the others as they are all together in a BOX.

AUG. 31, 1959

FOR SALE: #0 Frick sawmill with 52" and 56" Hoe saws; B.B. Mandrell Sawdust blower, 40' X 8" belt, 60' X 6" edger belt; 27" Frick Edger; M & M 100 Hp Power Unit Pulleys Etc. WALTER SPOSKOSKI, R. 1, Townville, Pa. Phone 2280.

FOR SALE: 15" X 6" Four side Planer, Square four-slotted heads piping and belts; 75 Hp G. E. Motor with reduced voltage starter, 220 60 Cycle 3 phase. Will sell separately. REESE LUMBER CO., Box 566. Williamsport, Pa.

FOR SALE: One 25" Tower Edger with 7½ Hp motor mounted direct with flexible coupling - \$335.00 or Edger only \$200.00; One Hermance swing cutoff saw Rebuilt with 5 Hp G.E. Motor B.B.-\$165.00-Saw Only \$100. MANSFIELD NOVELTY CO., Mansfield, Pa.

We have a new Frick Salesman. Mr. Herb. W. Ackeman, address-P.O. Box 181, Hackettstown, N.J. Phone Garden 5-5170. Herb covers New York and all of New England. Am sure that he will be a great asset, and hope you all can get acquainted.

FOR SALE: Frick Mill and Saws- \$1300.00: Diesel No. 199 75 Hp- \$1000.00: Diesel No. 166 27 Hp \$800.00; Planer- \$1800.00; Slab Saws- \$400.00. MRS. A.R. BALDWIN, R. 2, Homer, N.Y.

FOR SALE: One S.A. Woods Moulder with about 300 lbs. knives, Good Condition. Only \$1500.00 MELVIN J. MICKLE, R.D., Warnerville, N.Y.

FOR SALE: Steam Boiler and 9½ X 10" steam engine-good stack-wood grates, \$900. O 1 Frick Mill, Edger, Blower, Wood Saw, Belt and Shaffing; One 54" and One 56" Saw -\$800.00; One D2 Diesel Tractor with winch -\$1500.00. HARRY R. NORTON, Monroeton, Pa. or IRVIN NORTON-Akeley, Pa. Ph. PL 74361

FOR SALE: One R.H. Birdsell Saw Mill, 20" Carriage-3 blocks-2 saws-No price. ELMER SWICK, Sr., Lima, N.Y.

**NEW PRICES ON SAW BITS AND SHANKS OR HOLDERS**

Reg. size bits Now \$14.82 over 9/32 kerf \$16.21 Standall, Polar or Chip Rite  
\$16.28 over 9/32 kerf \$17.69  
Shanks or Holders each \$1.16

We will still pay postage on orders for 600 or over bits or 50 shanks.

Saw Wrench for all regular type saws \$5.81  
Pins for Wrenches each 45¢

FOR SALE: One 10" Molding Machine with matching heads - \$500; One 24" Planer and Matcher. 2 Sets Matching Heads - \$500; One 10' X 8' Belt Sander with Motor-\$150. MILLER LUMBER CO. Arcade, N.Y. Ph.6510.

We have had a lot of inquiries for catalogs. Sorry, but at the present time we do not print one. Hope to be able to as soon as prices become more stable. H.H. Jack Lyons.

Our Company can not be responsible for the accurate description of the various items that we advertise as we receive most of the ads by mail or phone and never see the equipment. So, if you wish a better description, please write to the person or company placing the ad. If you buy anything from the advertiser, please let us know.

Following is a partial list of the companies that we represent either as dealers or distributors:

Frick Co.	Sawmills & Equipment	Waynesboro, Pa.
Corinth	American Sawmills & Equipment	Corinth, Miss.
Dixie Logging Tool Co.		Chattanooga, Tenn.
Comell Mfg. Co.	Slab saws, Conveyors, Log Cleaners & Blowers	Laceyville, Pa.
Peavv Mfg. Co.	Logging Tools	Oakland, Me.
Neilson Saw & Mfg. Co.	Chain and saw sharpening Equipment	Eugene, Ore.
Metzgar Conveyor Co.	Roller Conveyors	Grand Rapids, Mich.
Hanchett Mfg. Co.	Saw Sharpening Equipment	Big Rapids, Mich.
Comet Industries	Brush Cutting Equipment	Richmond, Ind.
Propulsion Products Co.	Titan Chain Saws	Port Washington, Wis.
Ireland Mill & Supply Co.	Saw Mill Equipment	Cayuta, N.Y.
R. Hoe & Co.	Saws, Knives & Files	New York, N. Y.
Simonds Saw & Steel Co.	Saws, Knives & Files	Boston, Mass.
Disston Div.	Saws & Knives	Philadelphia, Pa.
J.E. Rhoads & Sons	Tanate Leather Lace	Wilmington, Del.
Heller Tool Co.	Files	Newcomerstown, Ohio
Sandvik Steel Co.	Oberg Files, Logging Tools	Fair Lawn, N. J.
Michigan Wedge Co.	Mag. Wedges	Sturgis, Mich.
White Light Metal Co.	Mag. Wedges	New York, N. Y.
Dixon Crucible Co.	Crayon, Paint Sticks, Crayon Holders	Jersey City, N. J.
Campbell Chain Co.	Log Chain & Equipment	York, Pa.
Hammerblow Wire Rope		
Cutter Co.	Cable Cutters	New York, N. Y.
Lufkin Rule Co.	Log & Lumber Rules	Saginaw, Mich.
M. M. Smith Co.	Lumber Aprons & Gloves	Galeton, Pa.
Blue Jet Cor.	Blue Jet Chain, Saw Chain, Penfield Bars	Hopedale, Mass.
Armstrong Bray Co.	Wire grip & Steel grip Belt Lacing	Chicago, Ill.
Collins Co.	Axes	Collinsville, Conn.
Thermoid Corp.	V & Flat Belt	Trenton, N. J.
Globe Woven Belting Co.	Flat Belts	Buffalo, N. Y.
Worthington Corp.	V Belts & Sheaves	Oil City, Pa.
Fleishmann Handle Co.	All types Wooden Handles	Waynesboro, Tenn.
Wilco Machine Co.	Burners	Memphis, Tenn.

That's about all I can remember right now but am sure there must be a lot of others. Be SURE and stop at our booth, or I should say tent, at Cherry Springs. In the future, we hope to mail you a BULLETIN about every TWO Months. So, if you have moved or are out of the lumber business, please let us know AT ONCE. It costs us about 15¢ for each copy that we mail and we do mail about 2700 of each issue. We still find that some people forget to mail us our commission on the equipment that we help them sell, so next issue we will probably list a few. By the way, this is our Tenth year in the Machinery Business.

By Fall, we will have an almost complete new line of Titan Saws, priced from \$130.00 up and will need a number of new dealers. If you know of anyone that you think would make a GOOD DEALER, please send us his or her name. With the complete line that we handle, we can almost assure a dealer of a good business and a good income. So why not get on the Bandwagon.

FOR SALE: One 60" Coe Veneering Machine, Two Doig Automatic Nailers, One Automatic Heading Machine, One 60" veneer clipper, and one Automatic cheese box head turner. \$3500.00 Complete. E.E. & C.C. GREEN, R 2, Potsdam, N.Y., Phone 5058.

FOR SALE: One U D 24 Diesel power unit - good condition. \$1800.00 LAW BROS. CONTRACTING CORP., 200 N. Main St., Herkimer, N. Y.

FOR SALE: One Fleming Steam Engine connected to 150 KVA. 240 Volt 3 ph 60 Cycle generator, or will sell engine seperately. O. AMES CO., Parkersburg, W. Va.

FOR SALE: One Twin clutch feed works Mfg. by Conner Machine Works, Sheffield, Pa., A 1 friction feed-good to a 6000 lb. carriage. One Calvert Hydraulic nigger and stop & loader, Nearly new. ALLEGANY HARDWOOD LUMBER CO., Smethport, Pa., Phone 548.

FOR SALE: One 32" 3-Saw Edger, \$250.00. WESTERN LUMBER CO., R. D. Clarendon, Pa.

FOR SALE: Three # 0 Frick Sawmills, Complete. RICHARD L. FLOOD, Neeleyton, Pa., Phone 30R11.

FOR SALE: One New # 1 Frick Mill, power receder. Fog turner, long mandrell, 100 H.P. Motor, transformers, slab saw, mill saws and a lot of extras. \$4000.00 SETTER BROS. CO., Cattaraugus, N. Y.

FOR SALE: One 54" Berlin Band resaw, extra blades - good condition - \$800.00, One Berlin Swing cutoff Saw - all steel 3 Phase 3 hp. motor. \$150.00. EDWARD HURT-CRAM, R 1, Ransomville, N. Y.

FOR SALE: One American Saw Mill med. size 54" I.P. Saw, Hurcules 115 hp Motor 30 H.P Electric, motor, Blower - \$1100.00. E. R. SMITH, R. 1, Howard, Pa.

## A dependable sawmill on wheels....

The Sawmobile is a conventional tried and tested Corinth No. 0 Sawmill, except that it is constructed of all iron and steel, and mounted on a two-wheel trailer as an integral unit. It is simply a proven Corinth sawmill on wheels... for fast, easy mobility. Today timber stands are becoming increasingly scattered, necessitating longer and longer log hauls. Selective cutting and thinning are constantly requiring more frequent moves. The Sawmobile has been designed specifically to meet these lum-

bering conditions of the present. It conforms to usual highway regulations and may be towed anywhere in or out of the woods.

Many successful lumbermen are now using the Sawmobile. Some of these operations are illustrated on page D-4 of this folder. After studying carefully all the facts about the Sawmobile, you will readily understand the advantages of putting this money-making tool to work now.

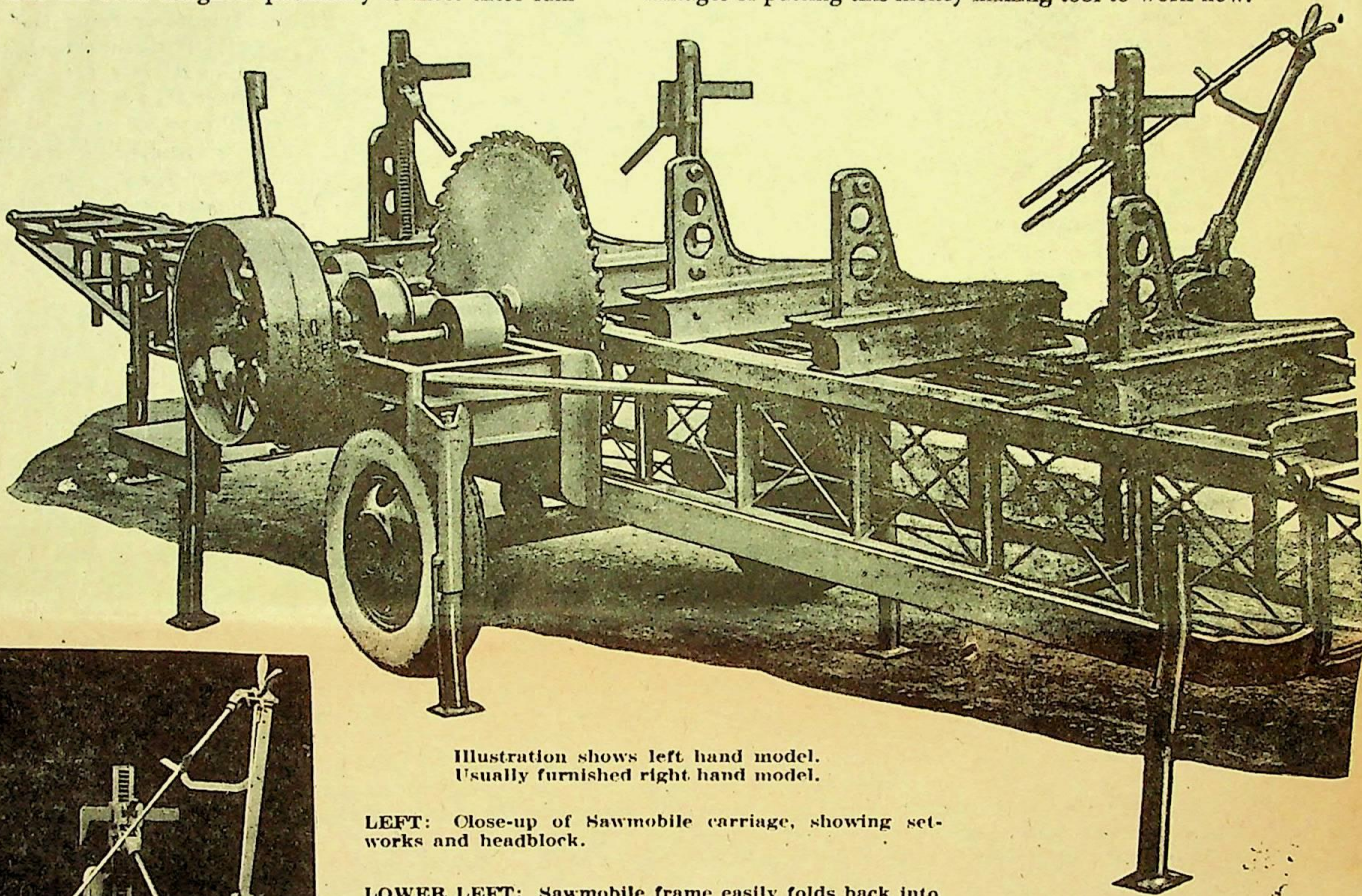
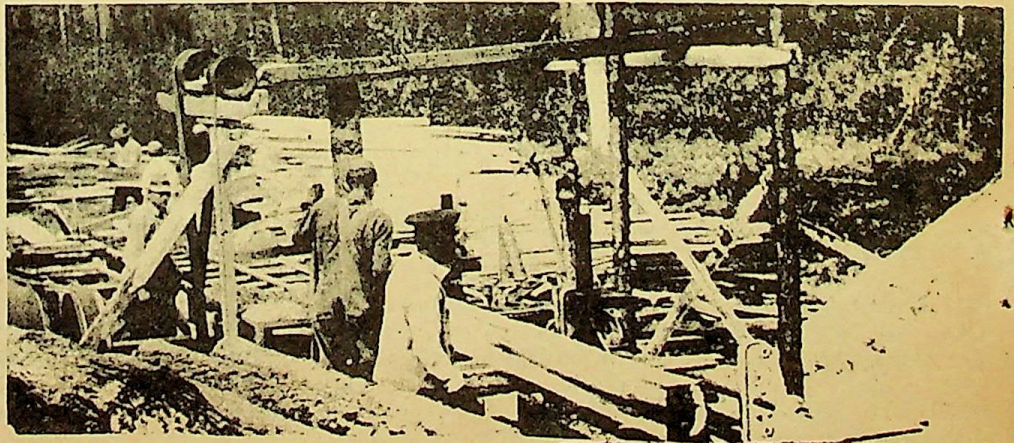
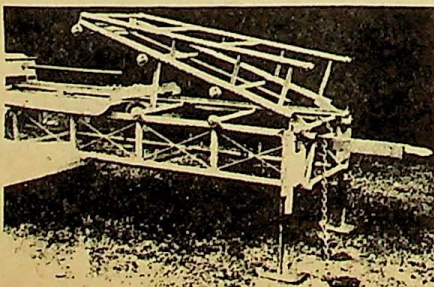
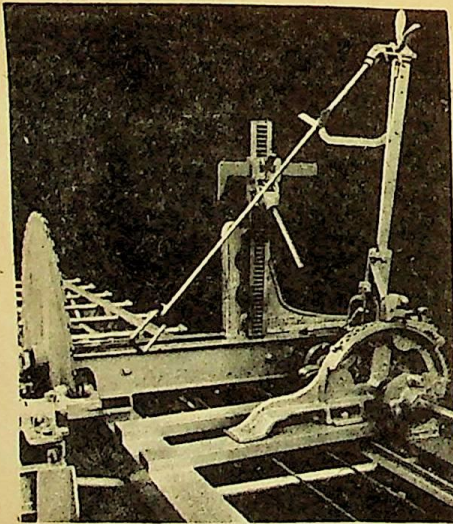


Illustration shows left hand model.  
Usually furnished right hand model.

**LEFT:** Close-up of Sawmobile carriage, showing set-works and headblock.

**LOWER LEFT:** Sawmobile frame easily folds back into transport position.

**BELOW:** Typical Sawmobile operation in the woods in Georgia.



## STANDARD EQUIPMENT

The mill is entirely all-metal construction.

- CARRIAGE** . . . 16 ft. length with three headblocks. Precision networks with built-in quick hand receder, locking device for carriage when in transport.
- HUSK** . . . . . 4 ft. mandrel length with 2 ball bearings, metal husk cover, 4" Belt Feed Works, roller bearing belt feed shaft.
- TRACK** . . . . . 32 ft. long with 6 ft. folding section for transport, 17 stationary axles as part of trailer structure with 34 ball bearings. Trackway fitted with wire rope feed works.
- TRAILER** . . . Steel truss frame, one heavy duty axle mounted with 2 wheels and tires, lunette for trailer hitch with safety chains, 8 mechanical leveling jacks.

## OPTIONAL EQUIPMENT

- Choice of dogs  
Additional headblocks  
Offset Knees  
Type C Power Receder  
Type BM Dust Conveyor  
Hydraulic Feed Works  
Hydraulic Log Deck

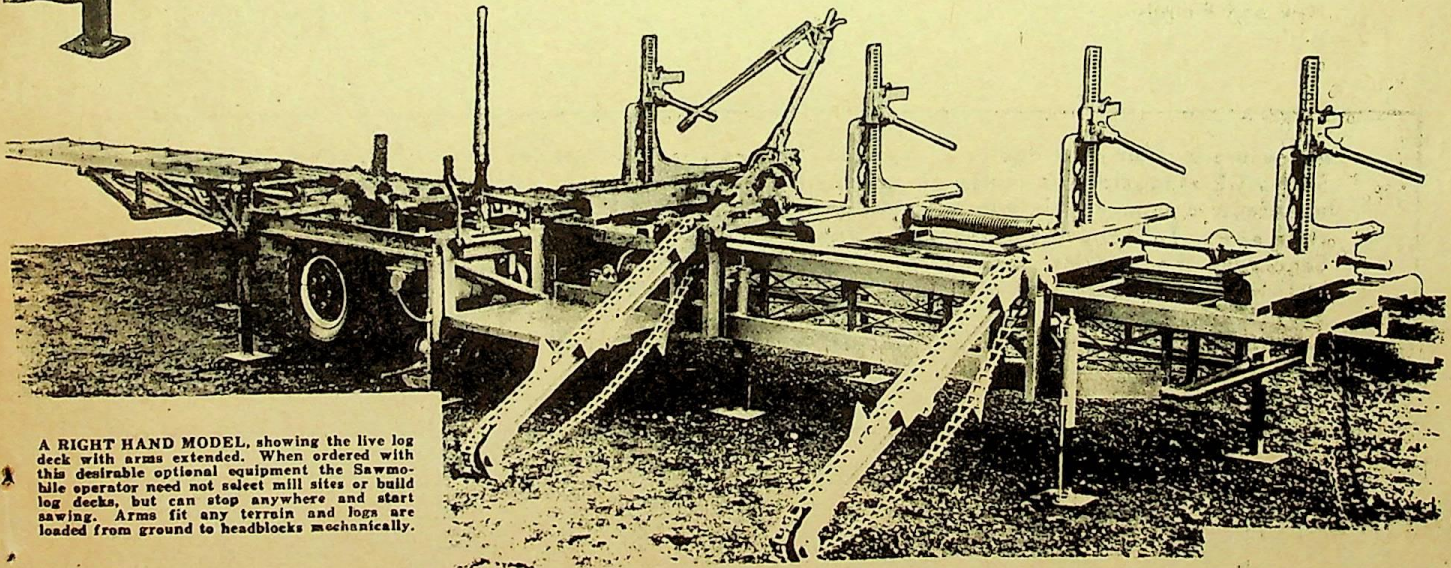
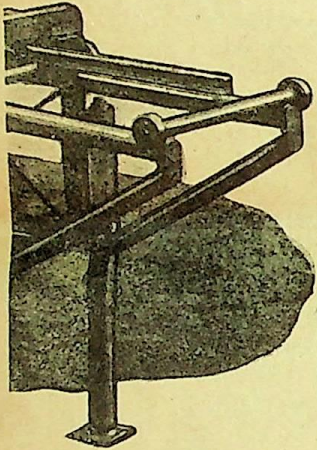
- Mandrel lengths 8½', 10', 12'  
Extra mandrel bearings  
Drive pulley to fit power  
Drive Belt (Flat)  
V-Drive or V-Flat Drive  
Saws  
Power Units—information on request

## Special Option

Live Log Deck for hauling up logs to carriage, powered from saw mandrel by roller chain and gear drive. Log Deck easily folded for transporting with standard mill.

## SPECIFICATIONS

- Overall length in operating position . . . . . 34-1/2'  
Overall length in transport position . . . . . 28-1/2'  
Overall width (with usual allowable limits for highway travel . . . . . 7'10"
- HUSK** . . . . . frame construction 5" structural channel  
belt feed . . . . . 4"  
Size of belt feed shaft . . . . . 1-11/16"  
type of feed shaft bearings . . . . . roller  
maximum saw diameter . . . . . 54"
- MANDREL** . . diameter . . . . . 2-3/16"  
diameter of saw collar . . . . . 6"
- CARRIAGE** . . frame construction . . 6" structural angle  
diameter of set shaft . . . . . 1-11/16"  
headblock opening . . . . . 33"
- TRACKWAY** . length operating position . . . . . 32'  
size rope feed shaft . . . . . 1-11/16"  
rope feed shaft bearings . . . . . roller  
wire rope . . . . . 3/8"  
sheave wheel bearings . . . . . porous bronze
- TRAILER** . . . wheels . . . . . truck type  
tires . . . . . 9.00 x 16
- Weight of standard mill . . . . . approx. 5600#



A RIGHT HAND MODEL, showing the live log deck with arms extended. When ordered with this desirable optional equipment the Sawmobile operator need not select mill sites or build log decks, but can stop anywhere and start sawing. Arms fit any terrain and logs are loaded from ground to headblocks mechanically.

**Cuts your lumber where you want it cut...**

FOR SALE		LYONS DIST. CO.	
One	Frick 27" Edger - Nearly New		\$650.00
One	180 H.P. Hurcules Power Unit with Drive		550.00
Several	Used I.P. Saws	starting at	100.00
One	Rowco Brush Cutter & Snow Blower-8½ H.P.-Neversold-list \$875		450.00
Fifteen	Used Chain Saws - various makes	starting at	75.00
One	American 30" Edger I. P. Saws		225.00
One	Mack tandem axel truck, log bunks		650.00
New and Used Chain Saw Chains for most all make saws.			

-----

The following people or companies are active TITAN Dealers. If you wish a demonstration or want to compare saws, please contact the nearest dealer, or if there is no dealer near you, you, please contact us. We still have a lot of room for new dealers.

Wayne Packard, Packard Lumber Company  
 Roy Sanford  
 E. H. Tucker, R. D.  
 Cuba Farm Supply  
 Russell Farm Supply  
 Osboms Garage  
 Central Garage  
 Mongera Implement Company  
 H. E. Lutz & Son, Walnut Street  
 H & H Farm Supply  
 Studd and Whipple  
 Sherman Farm Supply  
 Ralph Dresser, Lewiston Road  
 C.A. Phillips & Sons  
 Nye and Paddin

Lawrenceville, Pennsylvania  
 Titusville, Pennsylvania  
 Coudersport, Pennsylvania  
 Cuba, New York  
 Russell, Pennsylvania  
 Pittsfield, Pennsylvania  
 Townville, Pennsylvania  
 Cambridge Springs, Pennsylvania  
 Sagertown, Pennsylvania  
 Randolph, New York  
 Conewango Valley, New York  
 Sherman, New York  
 Batavia, New York  
 Franklinville, New York  
 Andover, New York

If you are a chain saw dealer or a user, you owe it to yourself to subscribe to the CHAIN SAW AGE Magazine. It really gives you the real story on saws and the companies that manufacture them. Tells you how to compare saws, and how to take care of and maintain your saws. Subscription rates are 1 year - \$3.00; 3 years - \$5.00. Send your check to Mr. Jim Conroy, Chain Saw Age, Box 6654, Portland 66, Ore. and we still think that every saw mill man in the north east owes it to himself to take the NORTH EASTERN LOGGER. I know dozens of mill operators that wouldn't miss a copy for most anything. Subscription rate is \$3.50 per year and mail your check to Rev. Frank Reed, Old Forge, New York.



wilco machine works, inc.

MUNICIPAL AIRPORT  
P.O. BOX 3722

MEMPHIS 14, TENN.  
WH 8 - 4555

WILCO REFUSE BURNER INSTALLATIONS

# LOCAL USERS OF WILCO BURNERS

## NEW JERSEY

## NEW YORK

Company	City	Type Refuse Model	Company	City	Type Refuse Model
American Cyanamid Co.	Bound Brook	Industrial 525	Robert Mallery Lbr. Co.	Hancock	Wood 30
American Cyanamid Co.	Bound Brook	Industrial 50	Pulaski Wood & Supply Co.	Waterloo	Wood 30
E. I. DuPont de Nemours & Co.	Deep Water	Industrial 50	Trudo Lbr. Co.	Lyons Fall	Wood 30
E. I. DuPont de Nemours & Co.	Deep Water	Industrial 525			
Gering Products, Inc.	Kenilworth	Industrial 35			
Hercules Drum & Barrel Co.	Newark	Industrial 50			
Hercules Drum & Barrel Co.	Newark	Industrial 525			
Hercules Drum & Barrel Co.	North Wildwood	Municipal 525			
Hercules Powder Co.	Burlington	Industrial 25			
Kentile, Inc.	So. Plainfield	Industrial 25			
Kimble Glass Co.	Vineland	Industrial 35			
Mercury Div., Ford Motor Co.	Metuchen	Industrial 50			
State of New Jersey	Jamesburg	Industrial 25			
State of New Jersey	Leesburg	Industrial 15			
State of New Jersey	New Lisbon	Industrial 25			
State of New Jersey	Trenton	Industrial 25			
Owens-Illinois Glass Co.	Glassboro	Industrial 40			
Owens-Illinois Glass Co.	Bridgeton	Industrial 35			
Reliance Picture Frame Co.	Dover	Wood 20			
Riegel Paper Corp.	Milford	Industrial 525			
Winner Mfg. Co.	West Trenton	Industrial 35			

## OHIO

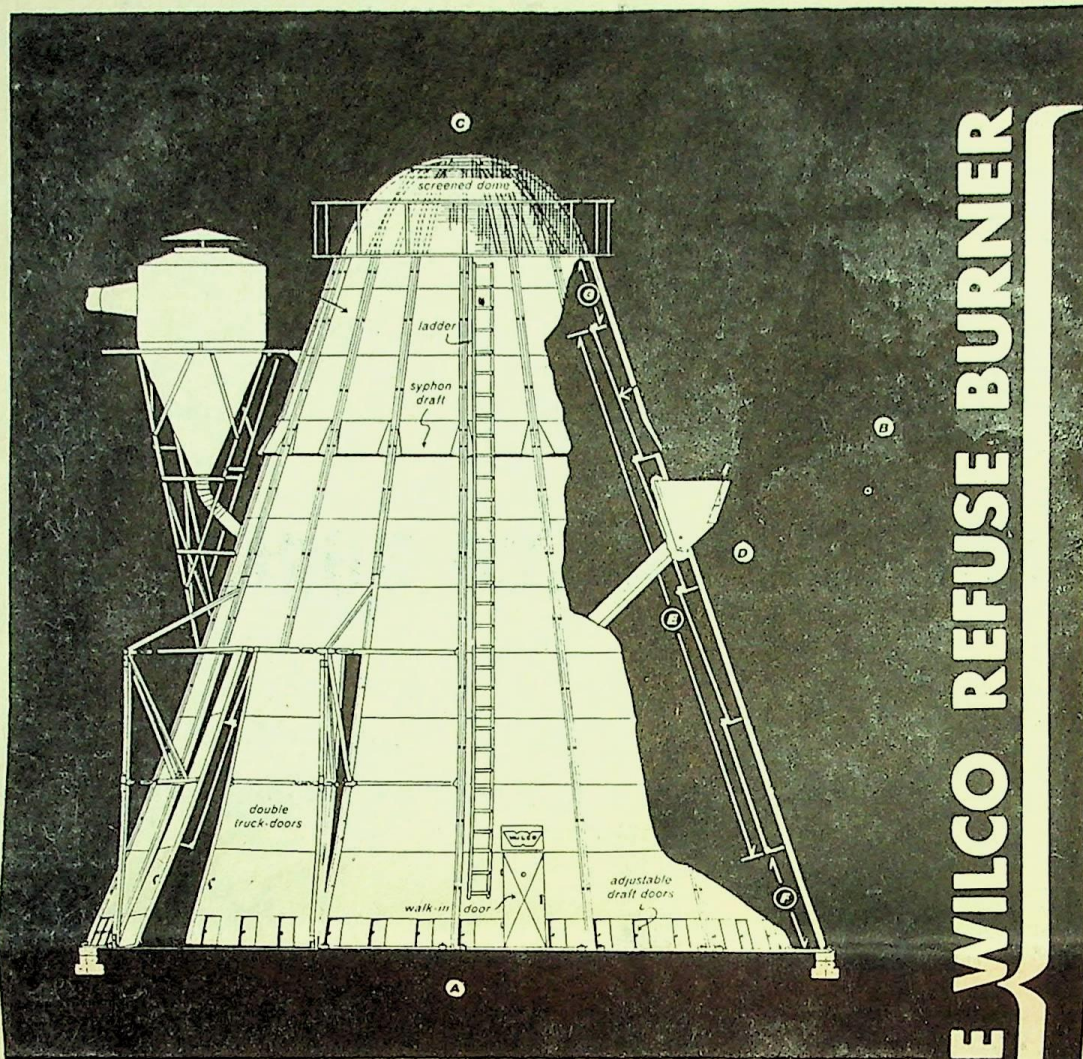
Allen Box Co.	Bergholz	Wood 30
Big Four Lbr. Co.	Cleveland	Wood 30
Canton Barrel & Bag Co.	Canton	Wood 35
City Ash Co.	Youngstown	Municipal 525
Davidson McNair Co.	Peninsula	Wood 25
Koogler Refuse Collection Co.	Dayton	Municipal 525
Stambaugh Hdwd. Lbr. Co.	Youngstown	Wood 35
Taylor Lbr. Co.	Rushtown	Wood 40
True Temper Corp.	Saybrook	Wood 25

## WEST VIRGINIA

## PENNSYLVANIA

Company	City	Type Refuse Model
Carbide & Carbon Chem. Co.	Charleston	Industrial 50
Columbia-Southern Chem. Co.	New	
Curry Lbr. Co.	Martinsville	Industrial 25
Hamer Hdwd. Mfgs., Inc.	Parkersburg	Wood 25
J. P. Hamer Lbr. Co.	Kenova	Wood 35
Metalab Labcraft	Man	Wood 40
Monsanto Chem. Co.	Elkins	Wood 20
Owens-Illinois Glass Co.	Nitro	Industrial 35
Union Carbide Olefins	Charleston	Industrial 35
	Sanderson	Wood 30

Armco Steel Corp.	Butler	Wood 15
Clearview Land Dev. Co.	Philadelphia	Municipal 525
McMillen Lbr. Co.	Sheffield	Wood 30
Penn Handle Co.	Galeton	Wood 25
Thompson Maple Products Co.	Carry	Wood 30
True Temper Corp.	Union City	Wood 45



**ADVANTAGES OF THE WILCO REFUSE BURNER**

**BURNS MANY  
TYPES OF  
WASTE**

**MULTIPLE  
FEEDING  
METHODS**

**EFFICIENT  
OPERATION**

**TRIPLE  
DRAFT**

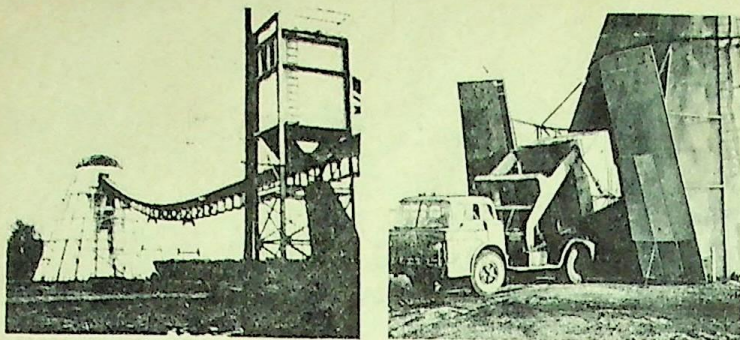
**PRE-FABRICATED  
CONSTRUCTION**

**BASIC DIMENSIONS**

Model	A	B	C	D	E	F	G
15	15'	17'4"	5'0"	15'6"	8'0"	5'9"	1'9"
20	20'	23'3"	6'3"	21'4"	15'9"	3'10"	1'9"
25	25'	27'10"	8'9"	25'2"	15'9"	5'9"	3'8"
30	30'	33'6"	10'0"	31'0"	23'6"	5'9"	1'9"
35	35'	38'2"	12'6"	34'11"	23'6"	5'9"	5'8"
40	40'	43'9"	13'9"	40'8"	31'3"	5'9"	3'8"
45	45'	49'9"	16'3"	44'7"	31'3"	5'9"	7'7"
525	52 1/2'	57'3"	18'9"	52'4"	39'0"	5'9"	7'7"
60	60'	65'2"	21'3"	60'1"	46'9"	5'9"	7'7"
675	67 1/2'	72'7"	23'9"	67'10"	54'6"	5'9"	7'7"

**BASIC SPECIFICATIONS**

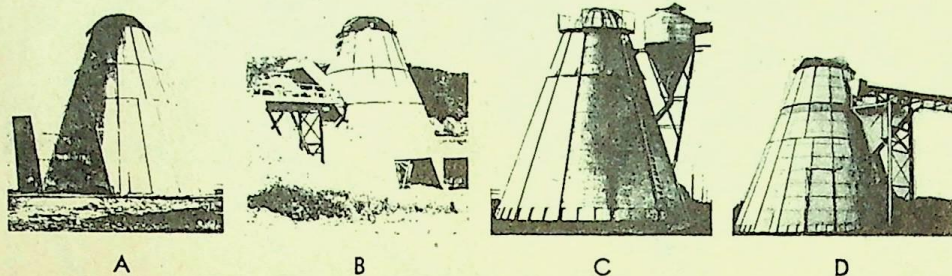
Model	Base Area Square Feet	Number Panels	Number Draft Doors	Foundation Concrete Cubic Yards	Estimated Erection Man-Hours	Basic Burner Weight Pounds	Inner Liner Weight Pounds	
15	177	6	17	3 1/2	20	1,950	420	
20	314	8	23	4 1/2	28	3,880	1,115	
25	491	10	29	5	40	6,320	1,430	
30	707	12	35	6	45	9,400	2,430	
35	962	14	41	7	52	12,720	3,020	
40	1257	16	47	7 1/2	65	17,870	4,400	
45	1590	Bot. 18 Top 12	53	8 1/2	140	20,330	5,150	
525	2165	21	14	62	10 1/2	220	28,050	7,385
60	2827	24	16	71	11 1/2	360	37,460	10,080
675	3578	27	18	80	13	430	48,160	13,110



## BURNS MANY TYPES OF WASTE

Scientific design and engineered Triple Draft enable the Wilco Burner efficiently to consume waste wood, bark, corn cobs and shucks, cotton gin waste, peanut hulls, and municipal and industrial trash.

## MULTIPLE FEEDING METHODS

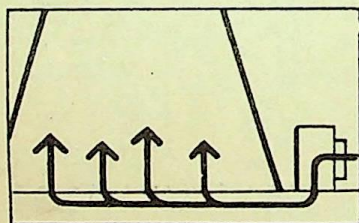


**BATCH FEEDING:** Small quantities of refuse may be fed through standard walk-in doors supplied with all burners, or whole truck loads may be fed through double-opening doors (A).

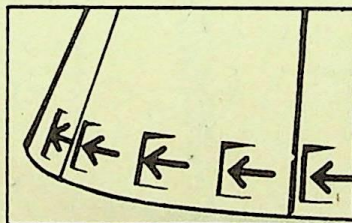


## EFFICIENT OPERATION

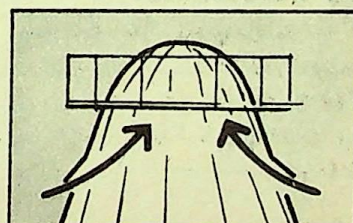
Large batch feeding or continuous feeding results in low cost. No monitoring operator is required. Circular Draft doors and Forced Draft throttle need regulation only under unusual conditions.



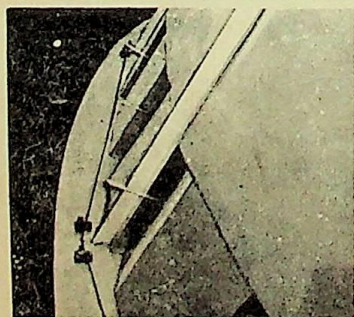
1. **FORCED DRAFT:** There are four distinct systems for most sizes of burners. A proper sized blower forces a regulated amount of air through underground piping into various designs and number of boxes having cast iron grates. This underfire air penetrates refuse for controlling burning rate.



2. **CIRCULAR DRAFT:** Overfire high velocity air from Circular Draft doors replaces rising hot gases, insulates and cools metal skin, and whirls flames around refuse, confining fire in middle of burner for amazingly fast, clean, and complete combustion.



3. **EXCLUSIVE SYPHON DRAFT:** Admittance of cool air into the upper hottest portion of burner helps keep skin cool and dilutes exhaust gases and smoke.



## PRE-FABRICATED CONSTRUCTION

All parts are designed and built for easy, fast and low cost erection. Uniform parts manufactured in jigs are simply bolted together. Illustrated step-by-step instructions are provided. Only a simple concrete ring foundation—not full floor—is used. Accessory parts, including dome trusses, are bolted

## OPTIONAL EXTRAS

### ALUMINIZED STEEL

Lower maintenance costs, corrosion resistance, heat reflectivity and outstanding appearance can be obtained by the use of "aluminized steel." By a hot-dip process, a .002" coating of pure aluminum is applied to both sides of 16 gauge cold-rolled steel. Exposed structural angles are treated with heat-resistant aluminum enamel. Initial cost of this extra will be quickly returned because annual painting is not required.

### INNER LINERS

For additional protection from heat of surge feeding or for additional capacity, an inner liner of 24 gauge corrugated steel may be furnished as original equipment or added later. Sheets hook to horizontal ribs bolted to panels. Installation is simple and easy.

### AUXILIARY EQUIPMENT

Sound design of the Wilco Burner allows a wide range of auxiliary equipment: large, double-opening truck doors easily operated by one man, catwalks and handrails integral with dome structure, exhaust gas cleaning systems and auxiliary and secondary combustion means; feed conveyors with hoods and chutes, dust collectors with supports and tailpipes, and complete pneumatic systems.

## SPECIAL COMMENTS

### FIRE INSURANCE

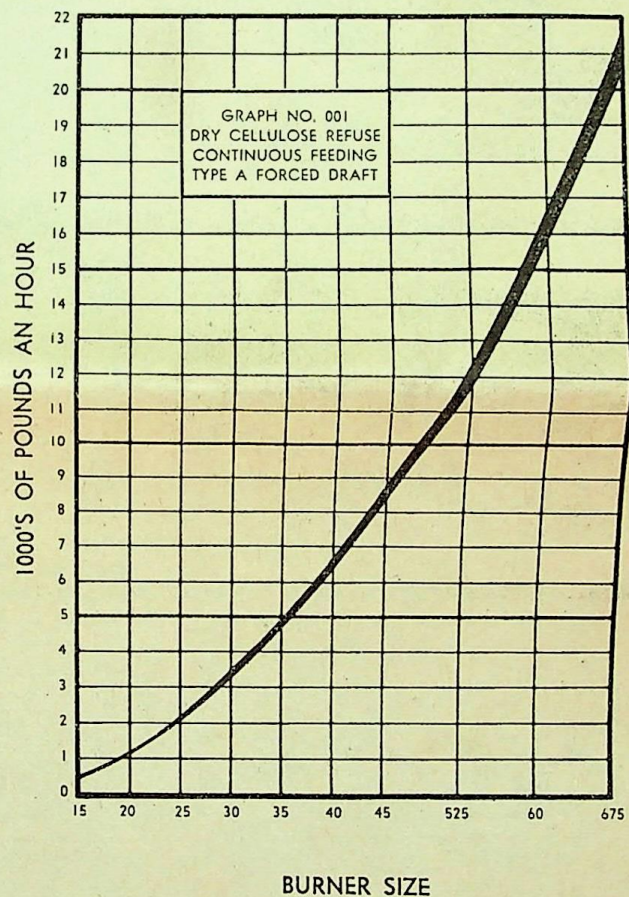
Insurance companies, governmental agencies, and safety departments of large industrial users have approved the Wilco Burner. In many instances reduced insurance premiums have amortized burner cost. Maximum fire safety is a prime design consideration.

### SHIPMENT

Wilco Burners may be shipped by truck or rail. Models 15, 20, 25, and 30 may be shipped by commercial truck. Models 35 and 40 require long flat-bed or open-top trailers. Two-panel design allows Models 45, 525, 60 and 675 to be shipped on two trucks or one rail car.

## SIZE SELECTION

Proper consideration must be given to many variables: composition and density of refuse, its moisture content, burning rate, feed method, surge loads, present and possible future volume. Typical graph indicates approximate relationship of ten burner sizes and amount of continuously fed dry cellulose refuse they will consume. Experienced engineers are available to relate burner size and amount of refuse for particular conditions.

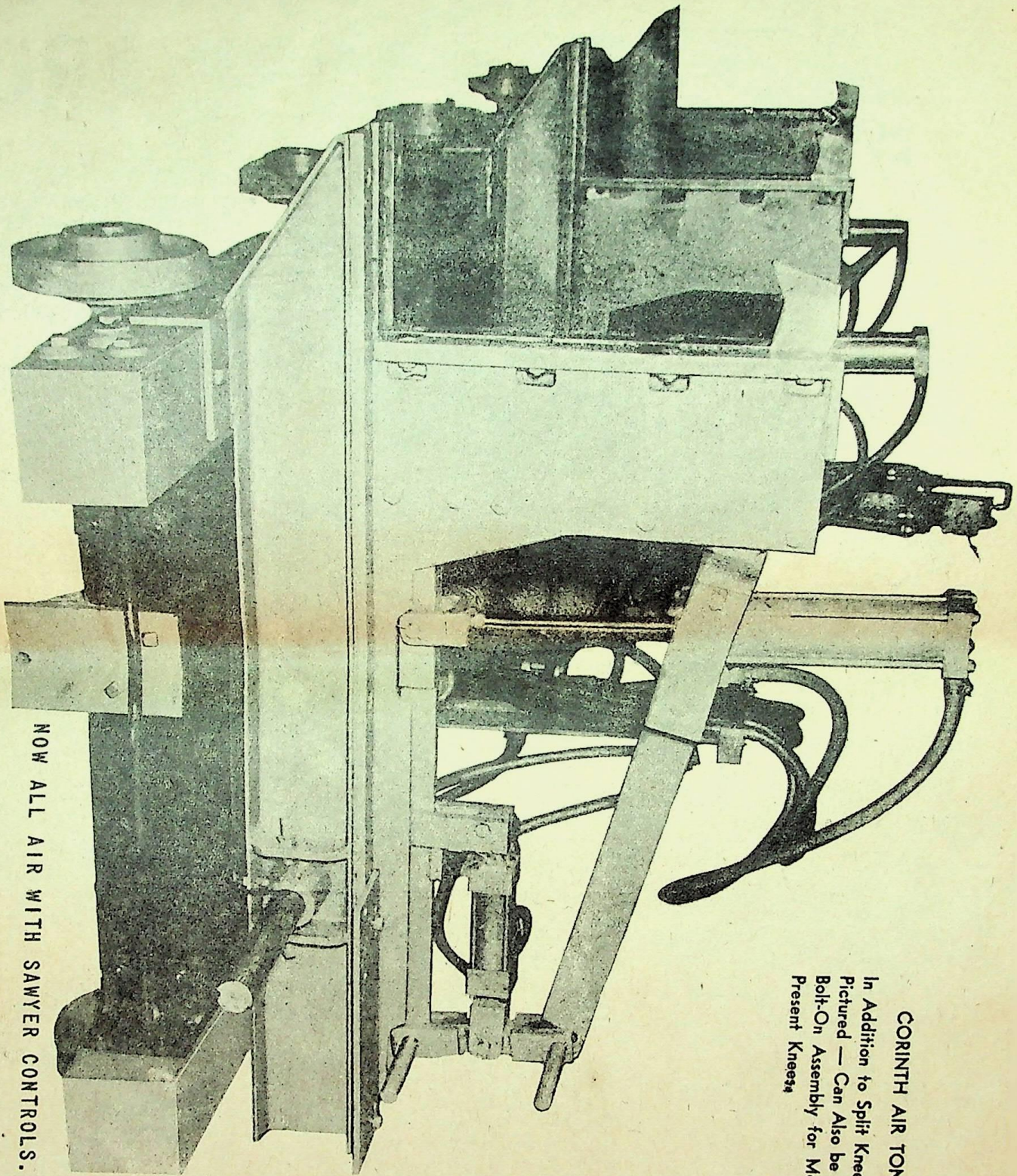


wilco machine works, inc.

MUNICIPAL AIRPORT  
P.O. BOX 3722

MEMPHIS 14, TENN.  
WH 8 - 4555

WILCO REFUSE BURNER



**CORINTH AIR TONG DOGS**

In Addition to Split Knee Mounting as Pictured — Can Also be Furnished in a Bolt-On Assembly for Mounting on Present Knees<sup>4</sup>

**NOW ALL AIR WITH SAWYER CONTROLS.**

**CORINTH-AMERICAN SAWMILL MACHINERY COMPANY**  
**CORINTH, MISSISSIPPI**  
Phone LD-6, 3321, 3322

# *Now!* A GIANT STEP FORWARD

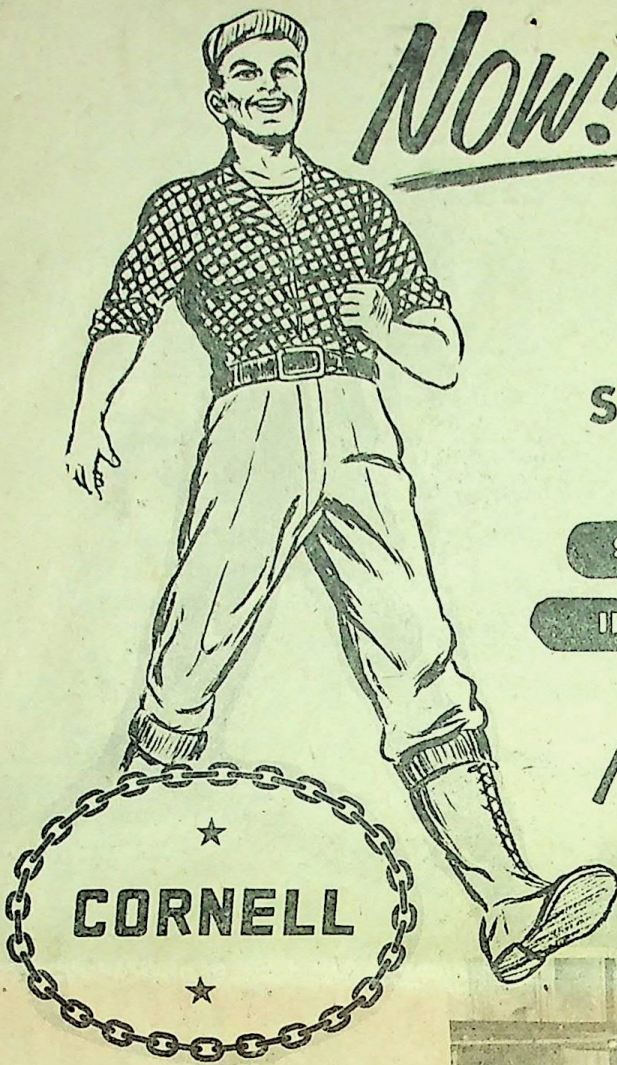
## IN SPEEDING SAW MILL OPERATIONS



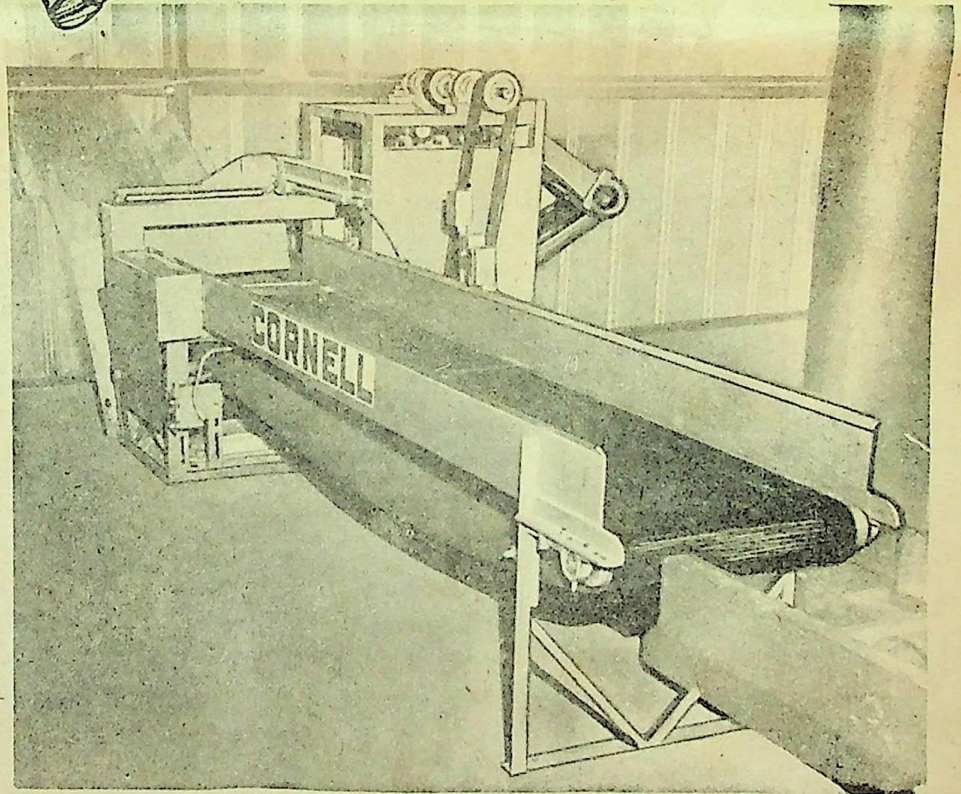
SLASHES TIME • LABOR COSTS • OVERHEAD!

INCREASES OUTPUT AND PROFIT OPPORTUNITY!

*New!* COMPLETELY AUTOMATIC  
HYDRAULIC SLAB SAW



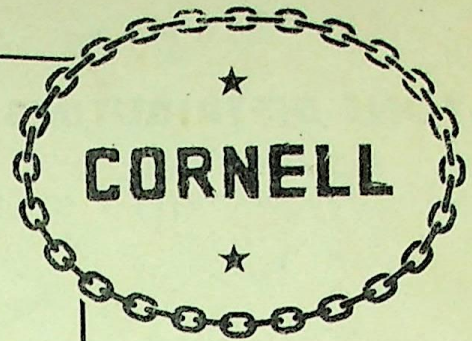
- ★ **GIANT CAPACITY**—Extra-size feed table is full 26" wide and 10" deep.
- ★ **SPEEDS WORK-FLOW**—Wider, high-speed hydraulic cut and feed combine to speed up and increase output. No stalling.
- ★ **NEW VERSATILITY**—Cuts slabs up to 26" wide and 10" deep. Adjusts for cut-lengths down to 6". Adaptable, with discharge-end extension, for lengths up to 4'. Longer lengths on special order.
- ★ **FULLY AUTOMATIC**—Stroke adjustable and automatically controlled on both forward and back cycle. Saw automatically stays retracted until slab length reaches desired setting.
- ★ **REDUCES SCRAP LOSS**—Designed and engineered to cut through those trouble-making big, tough slab sections.



CORNELL

**CORNELL MANUFACTURING CO.**  
LACEYVILLE, PENNSYLVANIA, U.S.A.

**A REVOLUTIONARY ADVANCE  
BY THE No. 1 NAME IN Problem-Solving  
SPECIALTY SAW MILL EQUIPMENT**



A "smash hit" from the minute it was first seen in action by delegates attending a recent Logging Convention, the new Cornell Hydraulic Slab Saw is now proving itself "on-the-job" in sensational fashion.

Mill owners report that the Cornell Hydraulic is outperforming their previous conventional-type slab saw from every possible angle. They no longer have a huge pile of "uncuttable" waste building up outside the mill. Slabs flow through their new big-capacity, high-speed saw at a rate never thought possible, and with practically no attention required. Once the "bottle neck," the slab sawing operation is now the "bright spot" in the whole work-flow picture.

You owe it to yourself to get the complete story on the new Cornell Hydraulic Slab Saw . . . or better yet, make arrangements to see it in action "on the job."

## SPECIFICATIONS

● **GENERAL CONSTRUCTION**

Rugged, all steel throughout. Welded heavy weight channel.

● **LENGTH OF CUT**

Adjustable in seconds for lengths from 6" up.

● **FEED TABLE**

26" wide, 10" deep, 10½ feet long. Made of ½" steel, electric welded. Hydraulic operated feed—no ratchets—no pawls. 24" Belt, 3 ply—non-skid—best quality.

● **BEARINGS**

Ball Bearings throughout.

● **RECOMMENDED SAW BLADE**

30"—10 gauge—special tooth. Hammered to approximately 1600 RPM speed.

● **WEIGHT**

Approximately 1200 pounds.

● **SIZE**

Height 4¾'; Length 12'; Width 6½'.

● **POWER REQUIREMENTS**

Approximately 15 H.P.

*Send for Free Catalog of Specialty Saw Mill Equipment.*

**LOG CLEANERS • SLAB SAWS • BLOWERS • SLAB ELEVATORS  
DUPLEX LOG TURNERS • PALLET DRILLS**

**LYONS DISTRIBUTING CO.**

WHOLESALE SAWMILL  
& LOGGING EQUIPMENT & SUPPLIES

PHONE 5911

110 ROCK CITY ST. LITTLE VALLEY, N. Y.

ERNEST O. COLLINS  
ANSELMA, PA.

Sec. 34.66 PL&R

**U.S. POSTAGE  
PAID  
SALAMANCA,  
N.Y.**

Permit no. 91

TO



FORM 3547 Requested

FIRST CLASS  
PERMIT NO. 4  
(SEC. 34.9 PL&R)  
Little Valley, N.Y.

# BUSINESS REPLY CARD

No Postage Stamp Necessary if Mailed in the United States

**5**<sup>¢</sup> POSTAGE WILL BE PAID BY-

LYONS DIST. CO.

Box 107

Little Valley, N. Y.



Date.....

Please Ship the Following:

..... Saw Teeth

..... Saw Shanks

..... Files

..... Chain

..... Grabs

..... Other

We are interested in the following:

.....

.....

.....

.....

Name .....

Street .....

City ..... State .....

Signature .....