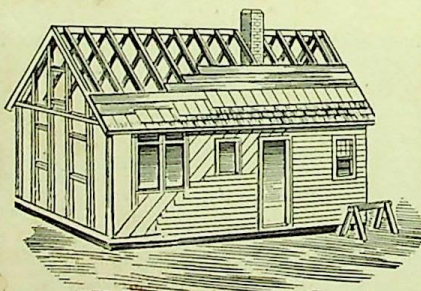
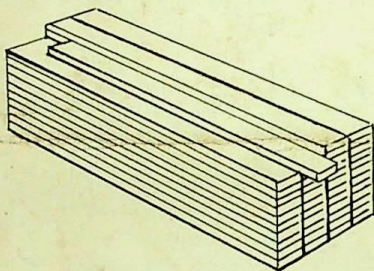
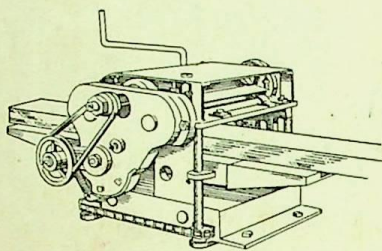
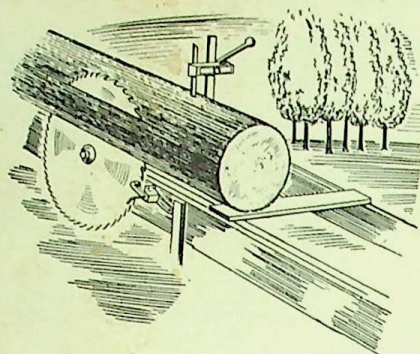


BELSAW

ONE-MAN SAWMILL



**LUMBER
MAKING
EQUIPMENT**



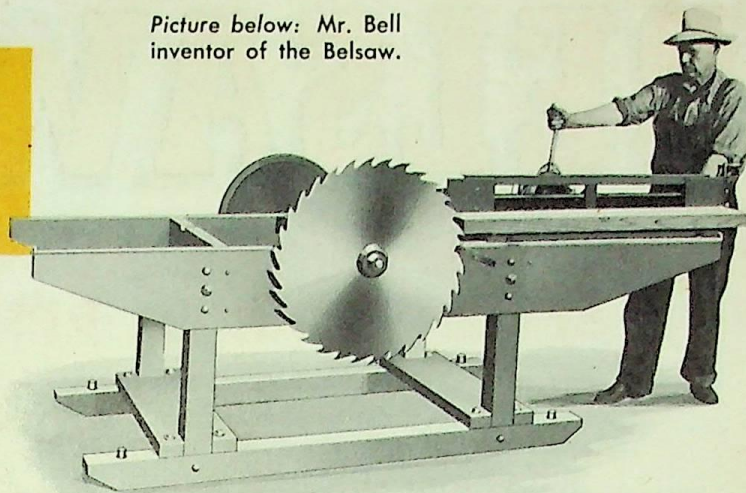
BELSAW MACHINERY CO

315 Westport Rd.

Kansas City, Mo.

THE HISTORY OF *The* BELSAW

Picture below: Mr. Bell
inventor of the Belsaw.



Some 30 years ago a Missouri farmer, John Bell, needed lumber and shingles badly. He couldn't afford to buy them at lumber yard prices, so he undertook to make them from the trees in his own woodlot.

WANTED — AN ENTIRELY NEW SMALL SAWMILL

Mr. Bell knew that small sawmills then available could do just one thing . . . rip logs into rough boards. But he needed *roofing* too.

He knew that sawmills required considerable power . . . and he had only an old "Model T" motor.

He knew they required several men to operate . . . and he had only his wife to help him.

He knew that with small logs, the mills cost more to run than the product was worth . . . and most of his trees were small.

He knew that they did not operate profitably on short runs . . . and he must saw only when he could spare time from his farm work.

Mr. Bell had to have a machine entirely different from any sawmill then known; it must be "ALL-PURPOSE" and "ONE-MAN". That he succeeded in building this machine is now industrial history.

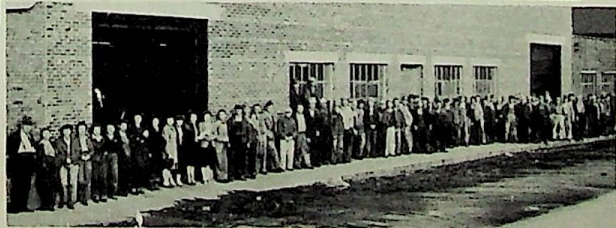
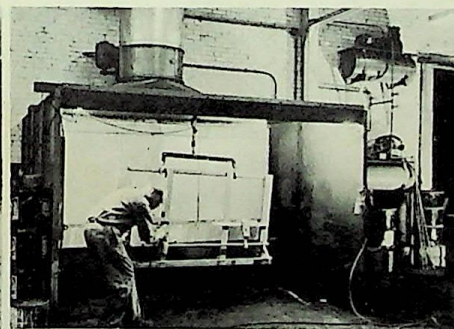
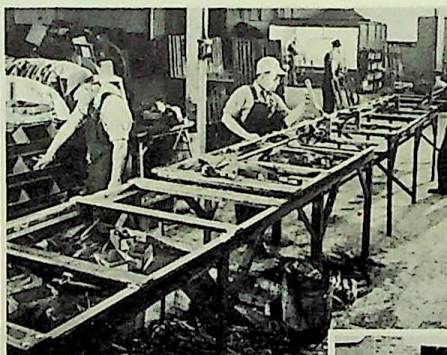
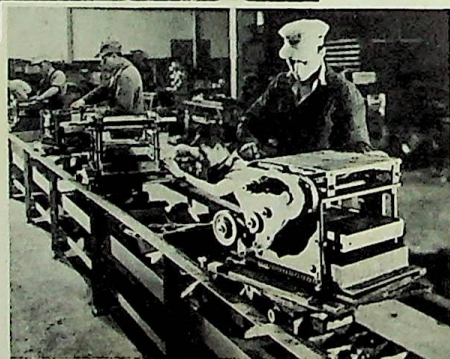


THE "BELSAW" IS BORN

Neighboring farmers clamored for the excellent, low-cost lumber Mr. Bell made on his new machine. They brought logs in such quantities that his custom sawing soon became more profitable than farming.

Customers came from near and far, insisting that he furnish them with machines like his. So Mr. Bell moved to Pleasant Hill, Mo., patented it and arranged for its manufacture by E. Stanley Field of Kansas City. Mr. Field named the machine "BELSAW", in honor of its inventor.

BELSAW TODAY



Today, the Belsaw remains in the hands of its founders. They have developed it from its early, crude form into today's most advanced sawmill design. It is still manufactured in Pleasant Hill, Mo. But the little machine shop of thirty years ago has become a modern, production line factory, with automatic precision machine tools, its own foundry, pattern and woodworking shops—employing more than 100 skilled workers, including seven sons of its original and present superintendent.

Built into your present Belsaw model is the practical experience of thousands of users, applied by clever mechanical engineers. Each machine is built with modern production-line

efficiency, enabling you to purchase high quality Belsaw equipment at very low cost.

A consistent policy of highest value at lowest cost, fair and honest customer treatment, has brought Belsaw Machinery Co. recognition as the world's leading manufacturer of light sawmill and woodworking equipment.



SAW YOUR WAY TO PROFITS WITH BELSAW