



BULLETIN

BELSAW MACHINERY CO.

KANSAS CITY, MO.

3rd Quarter 1960

Vol. 33, No. 3



IN HIS WOODWORKING department, Jim Wallace looks at products of the Belsaw.

savings multiply at a casket firm with BELSAW 910

At the Wallace Manufacturing Company in Pleasant Hill, Missouri, a Belsaw Multi-Duty Power Tool has quickly won the place of honor in the wood-working department.

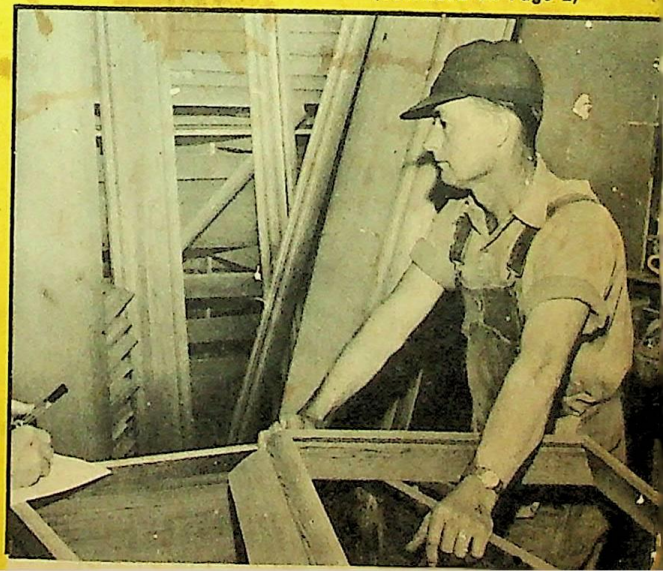
The Wallace company manufactures caskets and sells them throughout Missouri and Kansas. Until Jim Wallace bought the Belsaw, he bought most of the woodwork K.D.—knocked down—and then put the parts together to form the shells.

That left a lot to be desired. There was costly overtime sending a man and truck to Kansas City for the K.D. parts. There were costly delays and it was virtually impossible to control his labor force efficiently.

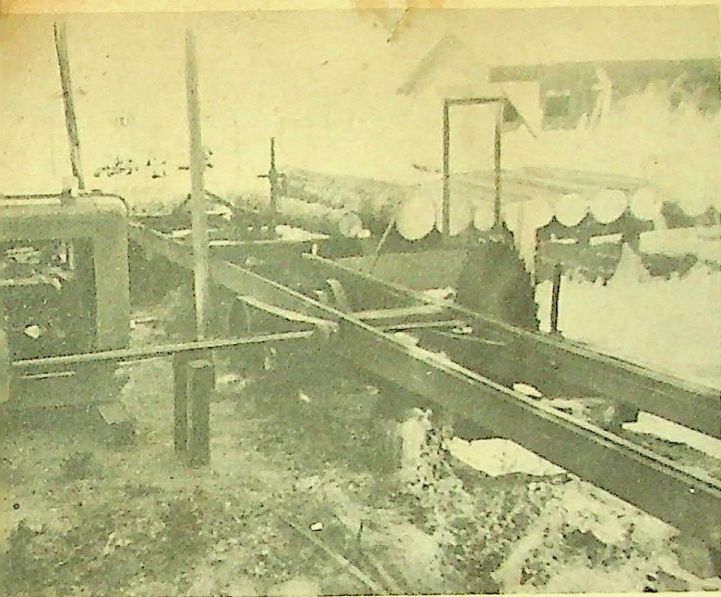
The Belsaw changed that.

Wallace got the 910 Belsaw and he

(Continued on Page 2)

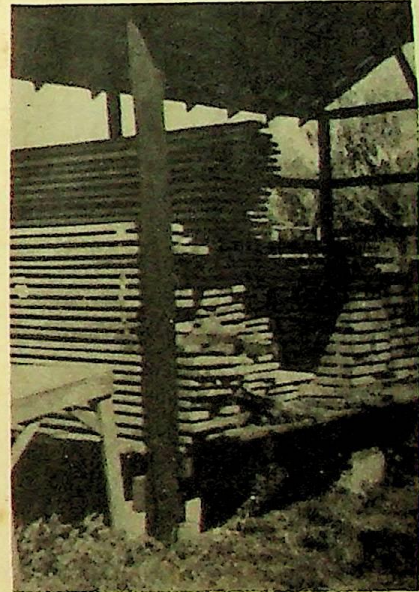


SIX CUTS WITH three sets of knives have been achieved by Clyde Gantt on the Multi-Duty Tool.



G. E. Gibson, Route No. 3, Lakeland, Florida, has rigged up floodlights and does most of his sawmilling on his Belsaw at night. He is a busy man, with cattle, a garden, some citrus, and a 40-hour-a-week job. He reports he bought the Belsaw to saw timber on his farm. He is dipping the lumber in permatox, stacking it and air drying it in a covered shed.

Upper left is a view of the mill and the Continental Red Seal Power unit. Upper right shows his permatox mixing drum and dipping tank in the background. He made the wagon from an old Model A Ford chassis. He dries his lumber in the shed.



SHOP NOTES

This Bulletin tells of the Wallace Manufacturing Company's effective use of the Multi-Duty on S4S redwood. Many other users find it even more economical to start with rough lumber because of its lower cost.

The Multi-Duty permits the combination of planing and molding knives so that rough lumber can be put through to finished thickness and pattern in a single pass. So the choice between rough and S4S can usually be based on the net cost difference between the two.

You also read how Sam Clark, builder, produces house trim from yellow pine. Here again is an example of the versatility of the Multi-Duty. Its owners can produce valuable finished material from low cost native wood.

Another significant factor in the Wallace operation is the Multi-Duty Tool's ability to hold to extremely critical dimensions. This eliminates expensive hand sanding. The combination of super smooth finish and exact thickness dimension leads to continuous reports from Belsaw users of their having minimized or eliminated the usual sanding.

"Ideal for grinding Wright tree saw blades and the one and 2-man cross cut saws," says Ward H. Osborn of La Junta, Colorado, of his Abrasive Belt Grinder.

Mr. Osborn is one of the long experienced users of the Sharp-All and other saw sharpening equipment. He sends along good pictures of changes he has made to get even greater efficiency.

We especially appreciate such reports as they often spark our engineers to develop new and better tools for the sharpening trade.



315 Westport Road
KANSAS CITY 11,
MISSOURI

Bulk Rate
U. S. POSTAGE
PAID

Permit No. 879
Kansas City, Mo.

656
O E COLLINS
ANSELMA
PENNA