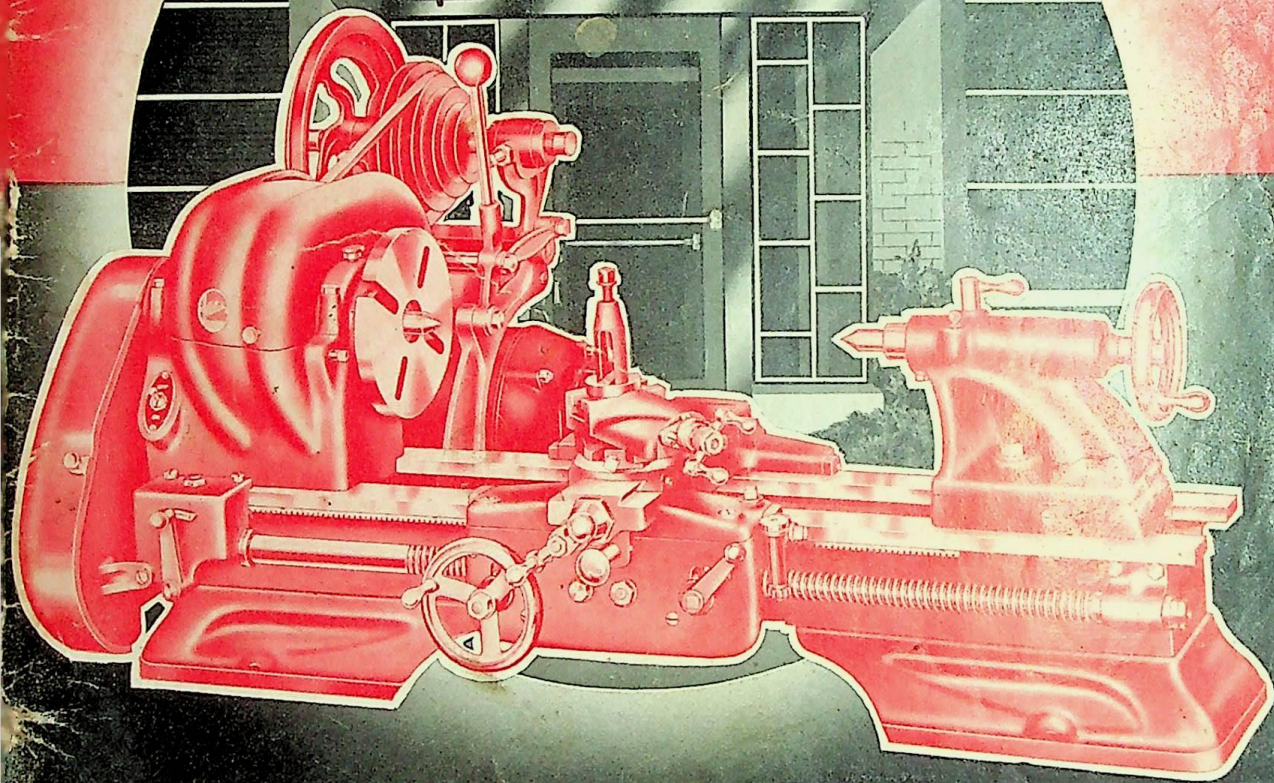


Atlas

ATLAS PRESS CO



MODERN SHOP EQUIPMENT

GENERAL CATALOG No. 39

CONTENTS



7-INCH
SHAPER
Pages 2-8



DRILL
PRESSES
Pages 9-19



LATHES
6, 9, and 10-in.
SWING
Pages 21-59



VICES
Pages 54-56



MACHINISTS
TOOLS
Page 57



WOOD
LATHES
Pages 58-59



MOTORS &
GRINDERS
Pages 61-63



ARBOR
PRESSES
1/2 to 70 Tons
Pages 64-70

INDEX

Arbor Presses Pages 64-70
Drill Presses Pages 9-19
Lathes, Metalworking, Pages 21-53
Lathes, Woodworking, Pages 58-59
Shaper, Metal Pages 2-8

ABRASIVES, for disc sander..... 60
 Abrasives, for drill press sander..... 16
 Allen wrench set..... 60
 Angle plate, 9 and 10-inch metal lathes..... 44
 Angular milling cutters..... 31, 50
 Anvils..... 54
ARBOR PRESSES..... 64-70
 Arbors, chuck, 9 and 10-inch metal lathes..... 33
 Arbors, chuck, 6-inch metal lathes..... 50
 Attachments, drill press..... 12, 14, 16-19
 Attachments, metal lathes..... 31-44, 50-52
 Attachments, woodworking lathes..... 59
BALL bearing lathe centers..... 42, 50
 Belt guard, drill press..... 12
 Belt guards, metal lathes..... 30
 Belt release, drill press..... 14
 Bench grinders..... 61
 Boring bars, 9 and 10-inch metal lathes..... 44
 Boring tool, shaper..... 8
 Boring tool holder, 9 and 10-inch metal lathe..... 43
 Boring tool holder, 6-inch metal lathes..... 51
 Boring tools, 9 and 10-inch metal lathes..... 41
 Boring tools, 6-inch metal lathes..... 51
 Buffing wheels, grinder..... 61
CALIPERS..... 57
 Carriage stop, 9 and 10-inch metal lathes..... 42
 Carriage stop, 6-inch lathes..... 57
 Center gauge..... 19
 Center key, drill press..... 59
 Center rest chuck, 9 and 10-inch metal lathes..... 33
 Center rest chuck, 6-inch metal lathes..... 50
 Centers, lathe..... 42, 50, 59
 Centers, woodworking, 9 and 10-inch lathes..... 44
 Centers, woodworking, 6-inch metal lathes..... 52
 Chisel and punch set..... 57
 Chisel bits, mortising..... 17
 Chisels, mortising..... 17
 Chisels, woodturning..... 41, 52, 59
 Chuck kits..... 33, 40
 Chucks, 9 and 10-inch metal lathes..... 32-33
 Chucks, 6-inch metal lathes..... 50
 Clamping Plate, for milling attachment..... 31
 Clamp-type dogs..... 41, 51
 Clutch..... 60
 Coil winding attachment, 9 and 10-inch lathes..... 43
 Coil winding attachment, 6-inch metal lathes..... 52
 Collet bushings, for milling operations..... 31, 50
 Collet chuck attachment, 9 and 10-inch lathes..... 33
 Collet chuck attachment, 6-inch metal lathes..... 50
 Collet sets, holding..... 31, 50
 Column collars, drill press..... 14
 Combination pipe vises..... 55
 Combination squares..... 57
COMPOUND DRIVE METAL LATHE..... 45
 Compound rest with vise, drill press..... 19
 Compound rest, wood lathes..... 59
 Countersink drills..... 19, 43
 Cross slide stop, 9 and 10-inch metal lathes..... 42
 Cross slide stop, 6-inch lathes..... 52
 Grotch centers..... 43, 51
 Cup centers, woodworking..... 44, 52, 59
 Cut-off tool, 9 and 10-inch metal lathes..... 43
 Cut-off tool, 6-inch metal lathes..... 51
 Cutter bits, 1/4-inch for 9 and 10-inch lathes..... 41
 Cutter bits, 3/16-inch for 6-inch lathes..... 51
 Cutter grinding attachment, 9 and 10-inch metal lathes..... 38
 Cutters, milling..... 31, 50
DIAL indicator, hydraulic presses..... 68
 Disc sander..... 60
 Dividers..... 57
 Dogs, lathe..... 41, 51
 Draw-in collet set, 9 and 10-inch metal lathes..... 33
 Draw-in collet set, 6-inch metal lathes..... 50
 Drill chucks, 9 and 10-inch metal lathes..... 33
 Drill chucks, 6-inch metal lathes..... 50
 Drill chucks, wood lathes..... 59
DRILL GRINDING ATTACHMENT..... 20
 Drill pads..... 43, 51, 59
 Drill press attachments..... 12, 14, 16-19
DRILL PRESSES..... 9-19
 Drill press heads, for special set-ups..... 14
 Drill press lamp..... 19
 Drill press vise..... 19
 Drills, countersink..... 19, 43
 Drill sets..... 19
 Drum sander, drill press..... 16
END mills..... 31, 50
 Extension beds, lathe..... 44, 52, 59
 Eyeshields, grinder..... 61
FACE plates, 9 and 10-inch metal lathes..... 43, 44
 Face plates, wood lathes..... 59
 Flanges, sets of..... 57
 Flexible steel rule..... 57
 Floor grinders..... 61
 Floor pedestals, grinders..... 41
 Floor stands, 9 and 10-inch metal lathes..... 30

Floor stands, 6-inch metal lathes..... 48
 Floor stands, wood lathes..... 59
 Follower rest, 9 and 10-inch metal lathes..... 42
 Follower rest, 6-inch metal lathes..... 51
 Foot lever feed control, drill press..... 12
GAUGE, rule depth..... 57
 Gauge, center..... 57
 Gauge, screw pitch..... 57
 Gear cutting attachment..... 31
 General purpose press..... 70
 General purpose vises..... 54
 Grease and oil..... 60
 Grinders, tool post, 9 and 10-inch lathes..... 38-39
 Grinder, tool post, 6-inch lathes..... 52
 Grinder, new hand..... 56
 Grinder, shaper..... 8
GRINDERS, BENCH AND FLOOR..... 61
 Grinding wheels, drill..... 20
 Grinding wheels, tool post grinders..... 38, 39, 52
 Grinding wheels, wire..... 61
HAND grinder, new..... 56
 Handwheel feed, arbor presses..... 47
 Headstock chucks, 9 and 10-inch metal lathes..... 33
 Headstock chucks, 6-inch metal lathes..... 50
 Heavy chipping vises..... 55
 Hermaphrodite calliper..... 57
 Hi-Lo speed attachments, drill press..... 14
HYDRAULIC PRESSES..... 68-69
IDLER pulleys, drill presses..... 19
 Independent chucks, 9 and 10-inch lathes..... 32
 Independent chucks, 6-inch metal lathes..... 50
 Independent chucks, wood lathes..... 59
 Inside micrometer..... 57
JACKSHAFT, wood lathes..... 59
 Jacobs chucks, 9 and 10-inch metal lathes..... 33
 Jacobs chucks, 6-inch metal lathes..... 50
 Jacobs drill chucks, wood lathes..... 59
KNURLING tool, 9 and 10-inch metal lathes..... 43
 Knurling tool, 6-inch metal lathes..... 51
LAMP, drill press..... 19
 Lamp, 9 and 10-inch metal lathes..... 44
 Lamp, 6-inch metal lathes..... 52
 Lathe attachments, 9-inch and 10-inch..... 31-44
 Lathe attachments, 6-inch..... 50-52
 Lathe centers..... 42, 50, 59
 Lathe manual..... 60
LATHES, NEW 10-INCH BACK-GEARED WITH POWER CROSS FEED..... 21-44
LATHES, 6-INCH BACK GEARED..... 46-53
LATHE, 9-INCH COMPOUND DRIVE..... 45
LATHES, WOODWORKING..... 58-59
 Letters, sets of..... 57
 Level..... 57
 Lineshaft drive, drill press..... 19
MACHINISTS TOOLS..... 57
MACHINISTS VISES..... 55
 Manual of Lathe Operation..... 60
 Metric threading attachment, 9-inch and 10-inch lathes..... 29
 Metric threading attachment, 6-inch lathes..... 47
 Mica undercutter, 9 and 10-inch metal lathes..... 40
 Mica undercutter, 6-inch metal lathes..... 52
 Mica undercutting saws..... 40, 52
 Micrometers..... 57
 Milling attachment, 9 and 10-inch metal lathes..... 31
 Milling attachment, 6-inch metal lathes..... 50
 Morse-taper socket, drill press..... 19
 Mortising attachments, drill press..... 17
 Mortising chisel bits, drill press..... 17
 Mortising chisels, drill press..... 17
MOTORS..... 62-63

OIL and grease..... 60
 Oil tables, drill press..... 12, 15
PACKAGED steel bars..... 60
 Pedestals, grinder..... 61
 Pipe centers, 9 and 10-inch metal lathes..... 44
 Piston equipment, 9 and 10-inch metal lathes..... 40
PRESSES, GENERAL PURPOSE..... 70
PRESSES, COMPOUND LEVERAGE..... 66-67
PRESSES, HYDRAULIC..... 68-69
PRESSES, SIMPLE LEVERAGE..... 65
 Pulley set, compound-drive lathe..... 45
 Pulleys, idler, for drill press..... 19
 Punch and chisel set..... 57
REAMER grinding attachment..... 38
 Recess wheels, for drill grinding..... 20, 61
 Reversing switches..... 42, 62
 Router bits, drill press..... 19
 Rule depth gauge..... 57
 Rules..... 57
SANDER, disc..... 60
 Sander, drill press..... 16
 Sanding discs..... 60
 Saws, undercutting..... 40, 52
 Screw centers, woodworking..... 44, 52, 59
 Screw pitch gauge..... 57
 Scribers..... 57
SHAPER, NEW 7-INCH..... 2-8
 Shaper, boring tool..... 8
 Shaper floor stand..... 8
 Shaper tool holder..... 8
 Shaping attachment, drill press..... 18
 Shaping cutters, drill press..... 18
 Sleeve socket, drill press..... 19
SMALL LATHES, NEW BACK-GEARED..... 46-53
 Sockets, Morse taper, drill press..... 19
 Speed attachments, for drill presses..... 14
 Split collets..... 33, 50
 Spur bits, drill press..... 19
 Spur centers, woodworking..... 44, 52, 59
 Steady rest, 9 and 10-inch metal lathes..... 42
 Steady rest, 6-inch metal lathes..... 51
 Steady rest, wood lathes..... 59
 Steel bars in packages..... 60
 Straightening presses..... 70
 Surface plate..... 60
 Switches, reversing..... 42, 62
 Switches, three phase..... 8, 12, 42
TAPER attachments, 9 and 10-inch lathes..... 34
 Taper attachments, 6-inch lathe..... 51
 Tapping attachments, drill press..... 12
 Testing and straightening attachment, hydraulic presses..... 68
 Threading tool, 9 and 10-inch metal lathes..... 43
 Threading tool, 6-inch metal lathes..... 51
TIMKEN BEARINGS, 10-INCH METAL LATHES..... 24
 Tool bits, 1/4-inch..... 41
 Tool bits, 3/16-inch..... 51
 Tool holder, shaper..... 8
 Tool holders, 9 and 10-inch metal lathes..... 41
 Tool holders, 6-inch metal lathes..... 51
 Tool post grinders, 9 and 10-inch lathes..... 38, 39
 Tool post grinder, 6-inch metal lathes..... 52
 Tool post tools, 9 and 10-inch metal lathes..... 41
 Tool post tools, 6-inch metal lathes..... 51
 Tool rests, wood lathes..... 59
TOOLS, MACHINISTS..... 57
 Turret attachments, 9 and 10-inch metal lathes..... 35
 Turret type boring set..... 44
UNDERCUTTER, 9 and 10-inch metal lathes..... 40
 Undercutter, 6-inch metal lathes..... 62
 Undercutting saws..... 40, 52
 Universal chucks, 9 and 10-inch metal lathes..... 32
 Universal chucks, 6-inch metal lathes..... 50
VALVE stem grinding attachment, 9 and 10-inch metal lathes..... 38
 Vise, drill press..... 19
 Vises combination pipe..... 55
 Vises, general purpose..... 54
 Vises, heavy chipping..... 55
VISES, MACHINISTS..... 55
 Vises, woodworkers..... 56
WHEELS, buffing..... 61
 Wheels, drill grinding..... 20, 61
 Wire brushes and sections..... 61
WOOD LATHES..... 58-59
 Woodruff keyway cutters..... 31, 50
 Woodworkers vises..... 56
 Woodworking attachments, 9 inch and 10-inch lathes..... 44
 Woodworking attachments, 6-inch metal lathes..... 52
 Work arbor, wood lathes..... 59
 Workhead, hydraulic presses..... 68

ATLAS PRESS COMPANY, MANUFACTURERS

1819-2019 North Pitcher Street, Kalamazoo, Michigan, U. S. A.

COMPLETE DISPLAYS

NEW YORK

130 West 42nd Street

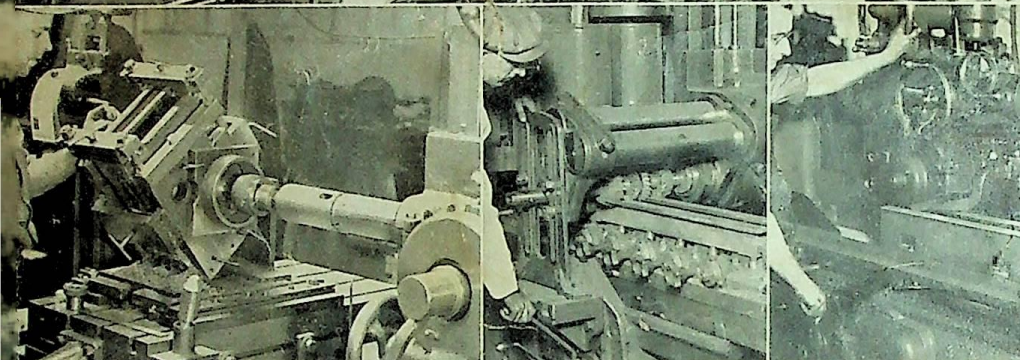
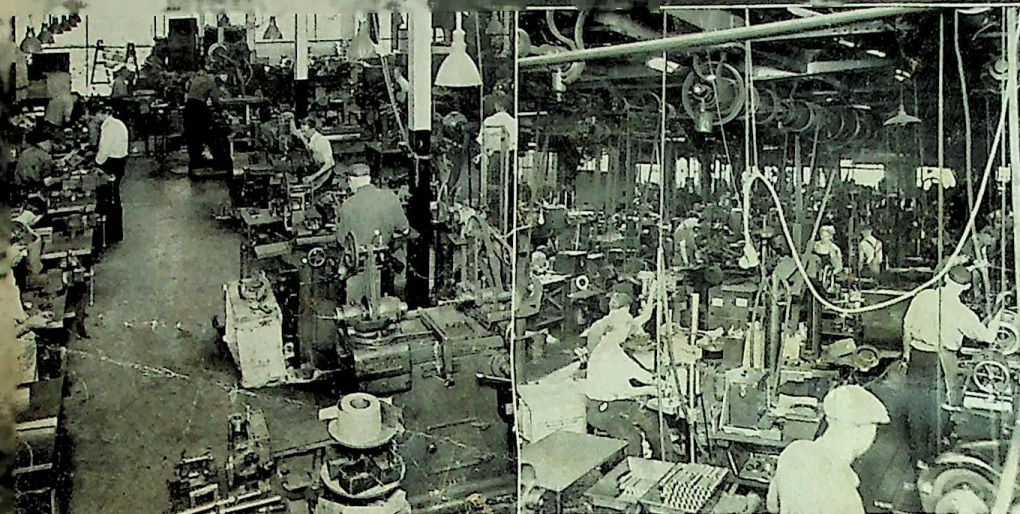
PHILADELPHIA

113 North Third Street

CHICAGO

35 E. Wacker, at Wabash

EXPORT DEPARTMENT, 130 West 42nd Street, New York City, Cable Address: "APCOY" New York



Atlas

MODERN MANUFACTURING

THROUGH every step of production—from engineering department through tool room, machine shops, assembly lines, testing and inspection—the Atlas factory reflects efficient, up-to-the-minute manufacturing methods.

The reputation of Atlas machine tools — their precision, power, durability, low cost—is a tribute to the modern efficiency of Atlas men, methods, and production equipment.

Whatever machine tool you buy, the name "Atlas" is your guarantee of long dependable service.



FOR
Atlas
EQUIPMENT
SEE



AUTHORIZED
Atlas
DEALER