

# NEW GRINNELL HOMES EXCITE FA

## Nollen, Williams Homes Attract Wide Notice

Two of Grinnell's new homes have elicited an exceptional amount of comment. They were built for John S. Nollen and Chet Williams. Both homes are distinguished in bearing the particular stamp of their occupants.

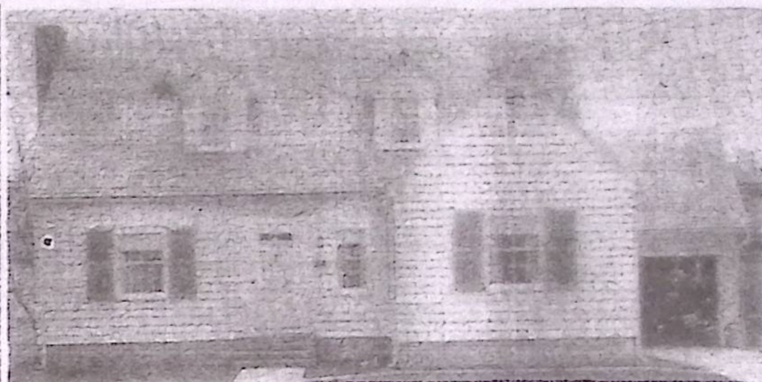
The Nollen house is of Cape Cod design and contains six rooms and full basement. Its interior arrangements and decoration bear the stamp of Mrs. Nollen's influence. One of its interesting features is the combined living and dining room laid out in an "L" shape, so the seating capacity of either can be doubled by using the square of space that forms a part of both. The kitchen is a "dream," as kitchens go.

Mr. Nollen's pride and joy is his personal study, which is banked on all sides with book cases to hold the many volumes that are a scholar's stock in trade.

The house is triply insulated—with sheeting, insulating board as plaster base and balsam wool in the attic. For added convenience there is a shower and lavatory on the first floor and the garage is attached directly to the house. In fact, the above contains nearly all the modern developments in construction that make the homes of today so superior to those of several years ago.

Chet Williams can accurately boast of having a home unlike any other in Grinnell. It is outstanding for the beautiful exterior veneer of colored sandstone from near the Lake of the Ozarks in Missouri, with a scattering of white stone from Stone City, Ia., to lend variety.

This five-room structure was designed for comfort and convenience as well as beauty, however.



The new John S. Nollen home, 914 Seventh Avenue.



Chet Williams' home, 603 West street.

It, too, has an attached garage. The kitchen is large and "super-complete," with commodious built-in cupboards to delight the eye of any housewife. The home is completely insulated and has a full cellar, so nicely finished that it, itself, would comprise fine living quarters.

Among the interior features that distinguish Chet's home are the woodwork of gumwood in the living room and the immense fireplace, constructed of the same type of stone used on the exterior.

Both the Nollen and Williams homes place the emphasis on comfortable living and are places of which the entire community can take pride.

## CAPITAL NEWS

(Continued from Page 9)

he will disapprove the bill, as he did a similar bill two years ago, because it failed of a two-thirds majority in passing both houses. He declared that the constitution calls for a two-thirds majority on bills of this nature.

The president of the senate and the speaker of the house both ruled that the bill did not need a two-thirds majority. The governor, the president of the senate and the speaker all are attorneys.

Another bill which may be vetoed, after a hearing, is that proposing the banning of double-deck automobile transport trails.

ers  
Jai  
7  
gre  
the  
rai  
ing  
wo  
ber  
sid  
wh  
pel  
he:  
cel  
tin