

## The forward movement of Chicago ...

[Chicago, 1908?]

<https://hdl.handle.net/2027/uiuo.ark:/13960/t8jd4sf7b>

# HathiTrust

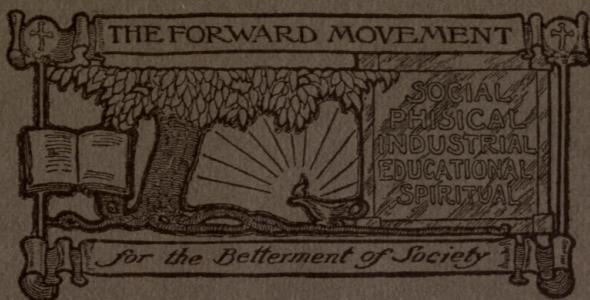


[www.hathitrust.org](http://www.hathitrust.org)

### Public Domain

[http://www.hathitrust.org/access\\_use#pd](http://www.hathitrust.org/access_use#pd)

We have determined this work to be in the public domain, meaning that it is not subject to copyright. Users are free to copy, use, and redistribute the work in part or in whole. It is possible that current copyright holders, heirs or the estate of the authors of individual portions of the work, such as illustrations or photographs, assert copyrights over these portions. Depending on the nature of subsequent use that is made, additional rights may need to be obtained independently of anything we can address.



### **Special Mention**

Read "A Square Deal," pp. 39 and 41.

Study "The Moral Training of Youth," especially  
"The Program," pp. 32 to 38.

Read "Summer Schools."—

"Scientific Study of Nature," pp. 15 to 21.

"School of Expression," pp 22 to 27.

"School of Dramatic Art," 27 and 28.

"Scientific Study of the Scriptures," p. 29.

Be sure to read "The Making of a Will," p. 44.

See By-Laws in regard to Membership, pp. 42 and 43.

See Financial Statement, p. 48.

ILLINOIS HISTORICAL SURVEY



Jul 1 AB 100

# THE FORWARD MOVEMENT

---

## OF CHICAGO

### *The Forward Movement*

Is an association of earnest men and women who are conscientiously endeavoring to furnish the struggling family and the boys and girls who are handicapped by unfortunate circumstances and tendencies, with the

#### *"Ministry of Helpfulness"*

by supplying activities directed to moral ends, for the physical, industrial, social and moral

#### *"Betterment of Society."*



# THE FORWARD MOVEMENT

## **OFFICERS**

George Lytton, Pres.	Edward G. Pauling, Vice-Pres.
William H. Tuttle, Secy.	Herbert L. Swift, Treas.
Geo. W. Gray, D. D., Gen. Supt., 305 West Van Buren St.	

## **BOARD OF DIRECTORS**

George Lytton,	Dr. A. J. Ochsner,
Gen. E. C. Young,	E. M. Murray,
Dr. George W. Gray,	W. C. Zimmerman,
Dr. J. B. McFatrich,	C. N. Kimball,
Herbert L. Swift,	John Heist,
Edward G. Pauling,	Grant Orr,
Jacob Baur,	H. W. Leman,
Amos Pettibone,	Nelson M. Lampert,
William H. Tuttle,	Hon. N. C. Sears,
Clyde Morrison,	W. C. Moulton,
A. M. Millard,	J. B. Foley,
H. D. Piatt,	George S. Haskell,
John C. Hallenbeck,	George P. Braun,

## **EXECUTIVE COMMITTEE**

Dr. J. B. McFatrich, Chairman.	
George Lytton,	Dr. George W. Gray.
General E. C. Young,	Amos Pettibone,
W. H. Tuttle,	E. G. Pauling,
Herbert L. Swift,	Jacob Baur.

## **DEPARTMENTS**

### **Social Settlement**

Mary E. Dix, Head Resident,  
305 W. Van Buren St., Chicago.

### **Summer Outing**

Saugatuck, Mich. Address Gen. Supt.

### **Summer Schools**

Saugatuck, Mich. Address Gen. Supt.

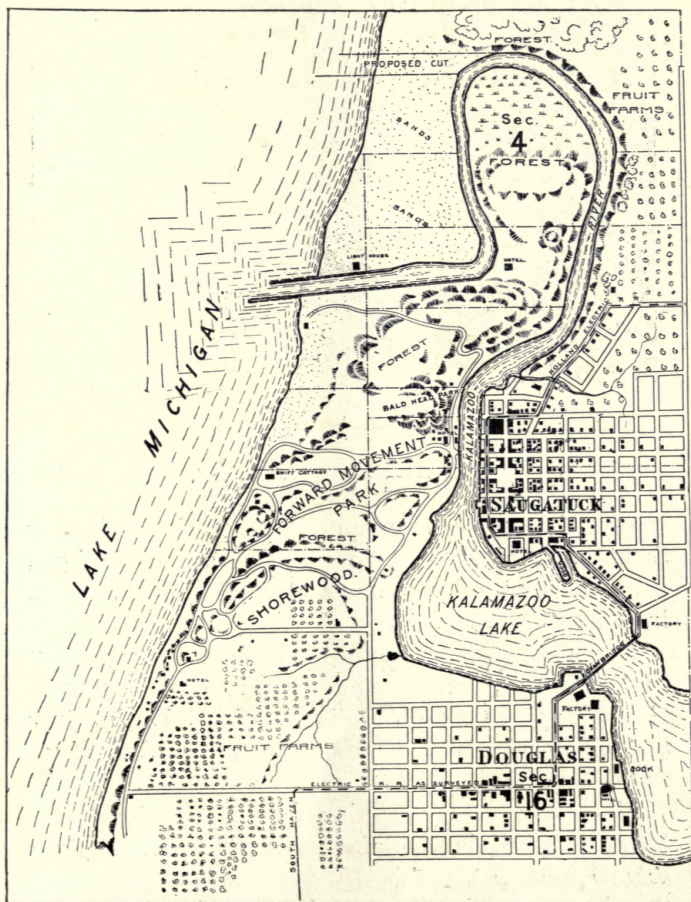
### **Endowment and Loan Fund**

Address Gen. Supt.

361.977311  
F779

122.1131

# S U M M E R O U T I N G



MAP OF FORWARD MOVEMENT PARK





SAUGATUCK, MICH.

## Summer Outing

The Forward Movement Park is situated near Saugatuck, on the eastern shore of Lake Michigan, which lies 14 miles southwest from Holland, Mich., in Allegan County.

There are no railroads or boat lines running direct to Saugatuck, except the electric car lines from Grand Rapids through Holland, Mich. During July and August this line from Holland to Saugatuck runs every hour.

When you buy your ticket of the Graham and Morton Line via Holland and Saugatuck, *ask for a ticket to Saugatuck*, as this will save you the expense of the electric car line from Holland to Saugatuck.

After leaving the Graham & Morton boats at Holland, take the interurban to Saugatuck. Ask the conductor to stop at the Ferry. Cross the river and take the Lincoln Road to Swift Villa.



**Some of the Attractions**

The Forward Movement Park is remarkable for its beauty, its healthfulness, and its adaptability for Summer Resort purposes. The prevalent spirit is one of "Good Cheer" and "Comradeship," entirely free from the undue restraint of more fashionable localities. Special attention is given to the moral tone of the place.

The Henry C. Lytton Hall is devoted to entertainments of various kinds, religious services on Sunday, and social and literary gatherings during the week. The Lake Michigan shore, at this point, is unusually fine for bathing, and the Kalamazoo Lake, the Kalamazoo River, the Electric Car Line and Steamers on Lake Michigan, running from Sauget north to Holland, and south to South Haven afford excellent facilities for excursions.

The grade of the paths in the Park is so easy, the woods are so charming, the air so exhilarating and everything so restful that the strolls never grow tiresome. Come and see for yourselves.

Of all the places devised for entertainment, nothing equals the swing from the top of a sand hill, holding fast to a rope fastened to a limb of a tree 50 or 60 feet high, which enables the person to swing once and sometimes twice around the tree without stopping, at points being 15 to 25 feet off the ground.

The summer outing at Forward Movement Park is for all who are trying to leave the world richer in thought, more noble in purpose, better in morals, higher in aim; more joyous, having less sorrow, less idleness, less selfishness, less meanness. Neither the idle rich nor the idle poor are invited.

But all who are trying to do their best, however

# THE FORWARD MOVEMENT

---



SWIFT VILLA



FRONT YARD OF SWIFT VILLA



poorly they may succeed, are welcome. This breadth of purpose is a real attraction.

There will be at least one good entertainment each week. Most of these will be given by specialists in their departments. Some will be given by amateurs. All will be interesting and profitable.

Each Sabbath from 3 P. M. to 4 P. M. it is expected from all who may be in the Park that they will carefully abstain from loud talking, bathing or anything that will mar the quiet of the hour. During that time at Lytton Hall there will be preaching or other forms of religious service, to which all are cordially invited. This is a source of pleasure and profit.

## Swift Villa

The Swift Villa contains parlors, offices, dining hall, and sleeping apartments for nearly one hundred people. It was built by Mrs. G. F. Swift of Chicago, and year by year is being improved. It overlooks Lake Michigan and is surrounded by high, wooded hills, which furnish splendid outlooks over lake and surrounding country as far as the eye can reach, and deep valleys which afford enchanting retreats.

## The Woman's Club Outing

Friends of the Forward Movement are familiar with the plans by which Miss Dix raises funds for this beautiful charity, but few who contribute to it can understand its real beneficence. By it, the Forward Movement Woman's Club is enabled to spend five days at the Park. The excursions upon the lake and upon the lovely Kalamazoo, through the rich fruit lands, the restful shade of the trees and the many winding paths of the forest-park, the bathing by sunlight and boating by moonlight to these tired and worn women these five days are "the days God lends





WOMAN'S CLUB AT SETTLEMENT HOUSE

The Woman's Club at Settlement House has existed for nearly fourteen years. It meets every Tuesday afternoon from two until four o'clock. Usual attendance about one hundred.

They largely represent the social life of the district.

to leaven what were all earth else with a feel of heaven."

In a similar manner Miss Dix takes the Sunbeam Club, many of them the children of these tired mothers, to the Park for a week or longer if possible and, like their mothers, the children look forward all the year to this playtime under the great trees, to the Venetian boatrises on the lake and winding river, and to all the happy experiences which teach the child what the world really is that God has made. Victor Hugo said: "God made the country, and man made the city." For the child at least this aphorism should be corrected: "the devil made the town." Even the trimly kept city park cannot compensate the child for the sweet fragrance of the virgin forest, the pillowing of baby cheeks on mossy beds, or the marvelous discoveries and companionships every child makes in the sylvan paths of the real forest.

The number is only lessened by want of money. Entire expense, including transportation both ways, is \$4.00 each. We need \$500 more. Make yourself happy by making somebody else happy.

### Out in the Fields

The little cares that fretted me  
 I lost them yesterday,  
 Among the fields above the sea,  
 Among the winds at play,  
 Among the lowing of the herds  
 The rustling of the trees,  
 Among the singing of the birds  
 The humming of the bees.  
 The foolish fears of what may happen  
 I cast them all away,  
 Among the clover scented grass  
 Among the new mown hay;  
 Among the husking of the corn,  
 Where drowsy poppies nod  
 Where ill thoughts die  
 And good are born,  
 Out in the fields with God.

—BROWNING.

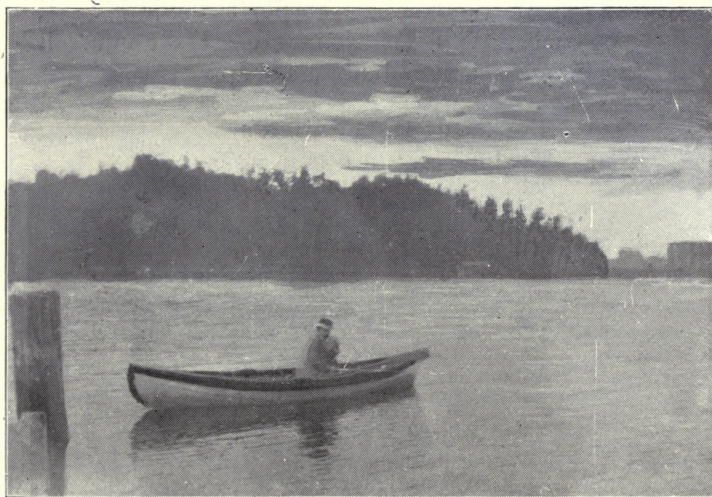


# THE FORWARD MOVEMENT

---



THE LINCOLN ROAD



ON THE KALAMAZOO RIVER



**General Information**

- (a) For prices of board and room see page 13.
- (b) Tents same rate as rooms.
- (c) Board and lodging by the day, \$1.25.
- (d) Special terms for large companies.
- (e) Ten per cent reduction on regular rates during the second and third weeks of June, also the the second and third weeks of September.
- (f) Ten per cent reduction on regular rates for students of the Nature Study School, School of Expression and Bible Study School.
- (g) Bathing suits and bath towels not provided.
- (h) Hauling trunks, including passenger from cars to Forward Movement and return, \$1 00.
- (i) Hauling valises, including passenger, round trip, fifty cents.
- (j) Anyone wishing to be met on arrival of cars must notify us as to the time of arrival.
- (k) Passengers riding to and from River to Forward Movement, ten cents round trip.
- (l) Those wishing to play lawn tennis should bring their own net and rackets.
- (m) Those wishing to play basket ball should bring their own ball.
- (n) Those having musical instruments are invited to bring them.
- (o) A fine assortment of the finest photograph postal cards of the Park sold at reasonable rates at Swift Villa.
- (p) Chicago daily papers kept on sale, also postage stamps and regular postal cards.
- (q) All mail addressed in care of Forward Movement Park will be delivered promptly at Swift Villa.
- (r) All persons wishing accommodations will find it greatly to their advantage to write early. Our space is limited.

# THE FORWARD MOVEMENT

---



LYTTON WALK



THE SAND-HILL SWING



### Stoughton Hall

For a long while we have sorely felt the need of a large rooming house for young ladies where they can have every necessary convenience and be so environed that they will have the largest liberty with the most complete protection.

Mrs. Stoughton, of Aurora, Ill., is now erecting such a building which will be ready for occupancy by the Middle of June, 1909. This hall is located on Interlachen Hill, in the Forward Movement Park, Saugatuck, Mich., 150 feet above Lake Michigan with an outlook bounded only by the horizon. It will accommodate about sixty girls and will be in charge of a most estimable lady.

Mothers wishing to send their daughters for an outing where they will have a real home life and be specially cared for will do well to send them to Stoughton Hall.

For further particulars, address Dr. Geo. W. Gray, Gen. Supt., Forward Movement, Chicago, Ill.

### Schedule of Prices

Board for adults, per week .....	\$3.75
Board for children, 6 to 12, per week .....	3.00
Board for children, under 6 .....	2.00

### Board and Room or Tent

\$2.00 room for one—board and room .....	\$5.75
2.00 room for two—board and room, each .....	4.75
3.00 room for one—board and room.....	6.75
3.00 room for two—board and room, each.....	5.25
3.00 room for three—board and room, each .....	4.75
4.00 room for one—board and room.....	7.75
4.00 room for two—board and room, each .....	5.75
4.00 room for three—board and room, each.....	5.25
4.00 room for four—board and room, each.....	4.75
4.00 room for five—board and room, each.....	4.50
4.00 room for six—board and room, each.....	4.25
Room and board, per day.....	.125
Basket ball, per hour.....	.15
Passenger from Saugatuck to Swift Villa, with trunk, round trip.....	1.00
Passenger from Saugatuck to Swift Villa, with valise, round trip.....	.50
Passenger from river to Swift Cottage, round trip.....	.10





BROWNING PATH

## Summer Schools

The Summer Outing consists in more than fresh air. A man is more than lungs, more than body, however wonderful its mechanism may be, he has intellect that needs rest and recuperation when worn and weary from incessant toil.

In providing an outing for working people we have sought to minister to the whole man—the physical, social, intellectual and moral nature. To do this we have organized these Summer Schools: "The Scientific Study of Nature," "School of Expression," "Scientific Study of the Scriptures" and the "School of Dramatic Art."

To counteract the usual idea that anything is good enough for the workingman and his family, we have put each of these Summer Schools in charge of the most capable person in his line of work that can be found in this country. The best is none too good for the struggling heroic toiler who often under most adverse circumstances plays the man more nobly than he upon whom fortune seems to smile.





## **The Scientific Study of Nature**

The great attraction we offer is our Summer Schools. It is a rare privilege to receive instruction from four such masters in their line of work as Prof. Edward G. Howe, Miss Cora Mel Patten, Rev. Rhys R. Lloyd and John Lane Connor. We place the program of each before you as worthy of your closest attention and highest appreciation. Learn to understand Nature when it speaks to you, ex-



press what it says wisely and effectively, and find that the Written Word when scientifically studied is in harmony with the Living Word written in flowers, stones and stars.

Lying between the Kalamazoo River on the east, and Lake Michigan on the west, is the 130 acres of diversified forest belonging to The Forward Movement. This forest with the River and its bottom lands, the sand dunes and the cool lake shore, are

not only delightful for recreation, but rich in bird, plant and insect life, and offer ideal conditions for the true Study of Nature.

The management has had these possibilities in mind from the start, and desired to offer to teachers and other interested persons this wealth of material for the study of Nature at first hand—that while en-



joying the quiet restfulness, the bathing and tent life of the Summer Outing to gain the inspiration which always comes from actual contact with life in its natural environment.

In the spring of 1908, a light and airy building, 24x36 feet, was erected on a hill overlooking the lake on the west. This room, the center of the work, has laboratory and study tables, shelving and cases for



such books, apparatus and illustrative material as is needed to supplement that out of doors.

A water garden has been located on the river, with a safe boat for the study of life on or in the water.

To the east and just below the laboratory a hollow of several acres in extent has been cleared and a beginning made in the planting of a Botanic Garden. Here, plants not found locally or those hav-



ing peculiar value for study, experiment, or comparison will be placed in a border so as to be easily accessible from a walk nearly half a mile long.

Opportunity for star observations will be supplied by a platform on the highest hill in the Park.

In the laboratory, material gathered in wood, lake or river can be studied, collections made to aid in future teaching or experimental work, as the occasion may demand.

All will continue under the directorship of Prof. Edward G. Howe, a well known and experienced science teacher of Chicago.

The past two years have vindicated that nothing can excel Aristotle's Peripatetic method; that the daily walks through the shady woods, by the lake, over the sand dunes, or the rows on the river were productive of much keen insight into the mysteries of nature and pleased all.



These trips, each planned with some special interest in view, will be continued under the personal leadership of Prof. Howe or skilled helper; while the Laboratory and Gardens will supply opportunity for the study of material gathered, or the working out of problems suggested by the field work.

Individuals will thus be at liberty to arrange with the Director for such study in Mineral, Plant or Star work, as personal interest, actual problems in



# THE FORWARD MOVEMENT

the school room or desired preparations may suggest and to pursue this work as rapidly as previous training, aptitude and industry may permit, unhampered by others.

It is thus hoped that real aid may be rendered each in solving the problems of actual instruction.

Teachers, parents and others interested in definite, progressive and well related lines of elementary science, will find inspiration and help by choosing some one line of work from the following table:

The Skies III.*	Metals sorted III.	Seeds and fruit sorted I.	Eight home animals 5.
The Moon VII.	Minerals sorted VIII.	Buds 4.	Twenty-three animals 9.
The Earth XVI.	Minerals and rocks sorted 14	Roots & stems 6.	Thirty-three foreign 11.
The Earth XXII.	Pebbles 15	Leaves 10.	The boy 19.
The Solar System XXIV.	Sharp stones 20	Trees 2.	Typical animals 27.
Gravitation XXX.	Plane form and color 21.	Woods and barks 13.	Man at home 33.
Light and the telesco. XXXV.	Metals studied 25.	Flowers 17.	Life histories of types 38.
Early history of the earth 42.	Solid form XXVI.	Fruit 18.	Life histories of types 39.
Other systems 47.	Molecule lessons 31.	Morning Glory 20.	Animal groups 49.
	Crystal 36.	Relationships of plants 28.	
	Minerals studied 37	Winterquarters of plants 34.	
	Coins 42.	Fruit studied 40	
	Earth-making 44.	Corn and beans 42.	
Original work.	Rocks 48.	Important families 45.	
		Important families 46.	

**Expense for a Six Weeks' Term**

Tuition.....\$9.00

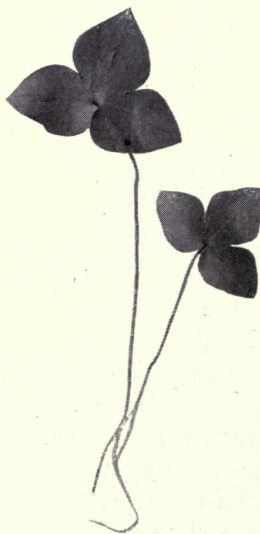
Laboratory Expense.....\$1.00 (plus breakage)

Board and furnished tents, \$4.25 to \$7.00 a week.

Discount of 10 per cent on regular price of board and room for all students of the Summer School of Science.

For further information, apply to Forward Movement, or to the Director, Edward G. Howe, 10233 S. Wood Street, Chicago, Illinois.

\*These two numbers refer to the "step" in Prof. Howe's two books, Systematic Science Teaching and Elementary Science, to be had on the grounds or of Appleton & Co., Chicago.







CORA MEL PATTEN

### School of Expression

Under the direction of Cora Mel Patten. In the summer of 1908, the School of Expression was organized at Forward Movement Park. Students were registered from four different states. Most of those in attendance were professional Readers and Teachers.

The Session closed with an evening recital in which all participated. Much satisfaction and enthusiasm was expressed over the work as outlined and presented by Miss Patten. The present indication is that the attendance this season will far surpass that of last year.

### Location of School

No more delightful place can be found for Summer Study than Forward Movement Park.

No school can offer better advantages in the way of buildings, or greater seclusion for study and practice, while excellent bathing, boating, etc., offers recreation and diversion from the routine of the classroom.

### Leadership

The School is fortunate in securing as a director Cora Mel Patten, the Principal of the Marden School of Music and Elocution, Chicago. Miss Patten has had a wide, diversified and successful record as a teacher, beginning in the rural schools, continuing through the intermediate grades, High School, University and Professional Schools. For ten years she has been at the head of her own School. Through all these years she has devoted herself more or less to professional Reading. There is no preparation for the platform equal to years of devotion to Literature and the constant endeavor to assist others in the realm of this Special Art.

More and more time has been devoted to the platform until now Miss Patten is known as one of the foremost Lecturers and Readers in the country. It is safe to say that no one is more alive to the real needs of the Studio and the Platform, and certainly no one has done more initiative work in promoting the highest forms of Interpretative Art.

She has the faculty of imparting to pupils her own enthusiasm and aspiration and of developing them along lines of individual power.

### Time

The School will open on Monday, July 5, and close on Friday, July 23.



# THE FORWARD MOVEMENT



THE LEET WALK



AN IDEAL EASEL LOCATION

## S U M M E R   S C H O O L S

---

### Hours

8:30 to 9:00 A. M. (except Saturday) Physical Training. Free to all on the grounds.

9 A. M. to 12 M. (except Saturday) Normal Class.

1:00 to 5 P. M.—Hours reserved for private instruction.

5:00 to 5:30 P. M.—Round Table, conducted by members of the class.

5:30 to 6:00 P. M.—Recreation.

### Course of Study

Breathing, Voice Training, Bodily Responsiveness, the Technique of Reading, Literary Analysis, the Development of Mental and Emotional Power, the Art of Story Telling, the Interpretation of Poetry, The Story, The Monologue, The Drama, Repertoire, Criticism.

The Course of Study as planned will be found helpful to High School and College Students, Public School Teachers, Club Women, Professional Readers and Teachers of Expression—in short, to all who are interested in the study or teaching of Literature, and who believe in vitalizing and spiritualizing the printed page through vocal interpretation.

### Credit

To those who may wish to complete a professional course under Miss Patten, work done in the Summer School will be credited toward the regular course in the Marden School, Chicago.

### Books

Students planning to attend the school are requested to write Miss Patten relative to books with which to provide themselves.

### Recitals

It is altogether desirable that pupils come to the



# THE FORWARD MOVEMENT



KALAMAZOO RIVER



RETURNING FROM AN EXCURSION

school with selections prepared for criticism. Selections will be suggested upon request.

The School will close with a Recital by Students, and it is hoped that some of the students will come prepared to render full programs.

During the Session Miss Patten will be heard in the following interpretative recitals:

1. "The Servant in the House" - *C. R. Kennedy*
2. "Jeanne D'Arc" - - - *P. Mackay*
3. "The Great Galeoto" - - - *Jose Echegaray*
4. "Brand" - - - - *H. Ibsen*
5. "An Enemy of the People" - *H. Ibsen*

#### Tuition

Normal Class—Three weeks	-	-	\$15.00
Private Instruction—per hour	-	-	3.00
"                    "          half hour	-	-	1.50

#### Registration

In order that reservations may be made for tents or rooms, early registration is desirable, and those wishing time reserved for private instruction should make application by letter.

For further information address

CORA MEL PATTEN,  
4858 Champlain Ave., Chicago.

## School of Dramatic Art

Mr. John Lane Connor, who has been conducting the School of Dramatic Art for the past two seasons, will continue to have charge of that department. A number of plays will be produced.

The success of former productions, like "Cupid Outwitting the Spinsters and Vacation," gives promise of what we may expect in that line.

Mr. Connor has been a leading member of such theatrical organizations as the Otis Skinner and Andrew Mack Cole, and has played the leading



roles in stock companies in many parts of the United States.

Prospective pupils of this department will kindly communicate at as early a date as possible with Mr. Connor, care either of The Forward Movement, or 16 West Wilson Avenue, as some of the plays for the summer are already being cast. Among the productions contemplated are the comedies, "The Circus Girl," and Shakespeare's "As You Like It."

Mr. Connor has been visiting the Park for several years, always bringing with him a choice class of young men and other friends. His artistic temperament is always manifest and he attracts people of that type of mind.

"Instruction ends in the schoolroom, but education ends only with life. \* \* \* And education is to unfold nature; to strengthen good and conquer evil; to give self help; to make a man."



HENRY C. LYTTON ASSEMBLY HALL

## **Scientific Study of the Scriptures**

### **A Week in a Wild-Wood Recreation—Rest—Study**

Preachers, Sunday School and other Christian Workers, all invited to attend a Bible Institute at Forward Movement Park, Saugatuck, Mich.

July 20 to 28, 1909—Under the leadership of one of the most eminent Bible Scholar in this country, Rev. Rhys R. Lloyd, A. M., D. D. He is interesting, instructive, devotional,

He has been lecturing under the auspices of The Forward Movement during the past winter. He awakens a marvelous interest in the study of the Scriptures wherever he goes. You cannot afford to miss hearing him.

This Summer Dr. Lloyd will give nine lectures on "The Christian Life—Its Beginning, Development, and Experiences." In these lectures a rare opportunity is offered to pastors, Sunday School teachers and church members of getting what is so much needed—saner, simpler, and more practical methods of getting at the facts of Christian Life.

We shall be glad to make engagements for the following lectures and recitals by Dr. Lloyd:

1. A Dramatic recital of Job.
2. Dramatic recital of the Story of Joseph.

Both of these are given in his own translation and in Oriental costume. These have proven to be extremely interesting and inspiring. Both are intended and are admirably adapted to every church and Sunday School. They are unique. Get them by all means.

3. Dramatic Recital of the Shepherd Stories of The Scriptures. (In costume.)

This new recital is an inspiration and a literary treat for all persons.



## THE FORWARD MOVEMENT



PRESENT SETTLEMENT HOUSE

This building was once an aristocratic residence in what was then regarded as one of the most fashionable sections of the city. When we bought it, eight years ago, it was occupied by twelve families.

During the past year, we have kept in close contact with the neighborhood, visiting such families as needed us and giving such assistance as the case demanded.

The rapid increase of factories in this neighborhood makes it necessary for us to locate farther west, where the people who work in the factories live. It is the present plan to change our location during the present year.

## **Social Settlement**

### **What it Stands for**

The Forward Movement is an organization for the specific purpose of seeking the betterment of society. To avoid scattering our efforts over too large a field, we have selected a specific class, hitherto seriously neglected. Among the poor there are three classes, quite distinctly separate. (1) The criminal class, (2) The pauper class. (3) The people, who from various causes are poor, and sometimes need temporary assistance.

It is this third class for which The Forward Movement stands. Their spirit of self-sacrifice, their willingness to do anything rather than take charity that they may win in the battle of life, entitles them to be known as the heroic element in society.

Their habits of industry, enforced economy and willingness to receive advice, make them a most desirable people to work with. Out of this heroic element of Society will come the men of the future. No other field of philanthropy promises so rich a harvest.

### **Social Center**

The work done at the social center has been as large as the character of the building would permit; much larger than any one would suppose could be done with such limited facilities.

The following lines of work have been successfully carried on, reaching during the winter over 500 families.

Clubs for women.	Neighborhood visiting.
Clubs for girls.	Kindergarten.
Clubs for boys.	Entertainments.
Sewing classes for children.	Circulating library.
Music classes for children.	Emergency work.



## The Moral Training of Youth

Society is so complex and in such need of re-adjustment that it would be strange if there were not various methods of operation seeking its betterment.

The Forward Movement has chosen as its peculiar field of work:

*First.* To train through industrial activities the struggling boys and girls who are handicapped by unfortunate circumstances and tendencies to find their place in the busy world of work.

*Second.* To establish, if possible, such a relation between the chosen activity and the formation of character that the former will almost certainly secure the latter.

*Third.* To secure an active recognition of social contact, as a means for the betterment of society through the ministry of helpfulness.

We call special attention to the following program:



KINDERGARTEN

### **A Program**

The problem of training the child is to maintain its freedom, while we direct its activities to moral ends.

This is now being done for children from 2 to 5 by the Kindergarten, followed by the Public School from the first to the eighth grade for children from five to twelve approximately.

The years of 13, 14, 15 and 16 are in many ways the most important in the formation of character, and probably the least cared for, in the four years of growing manhood. To appreciate this statement we have but to examine the U. S. Census for 1900, with reference to the beginning of criminal life.

It is a matter of great interest that there are unmistakable indications of an awakening upon the subject of the moral training of the child. Let us not make a mistake however, in confounding the question of instruction in school subjects with that training which has for its purpose the direction of adolescent activities to moral ends.

The Forward Movement of Chicago proposes to make an effort looking toward the solution of this problem by conducting an institution on the West Side, unique in character and based on modern views of education, having as its purpose the development of moral character, which we hope will prove sufficiently successful to warrant a similar movement on the North and South sides of the city.

### **Activities**

#### **Club Organizations**

The club should have the following moral ends in view:

1. The good of the club, through such parliamen-





PLAYGROUND, VAN BUREN STREET

tary usages as will help each to express his views freely and thereby develop a consciousness of his own personality and its relation to all other members of the club

2. The good of the settlement, by a cheerful recognition of the high purpose it seeks to accomplish by the maintenance of good order and a faithful attendance upon all instituted means for accomplishing the end sought.

3. The good of the neighborhood, by appointing various committees to ascertain the physical needs of the neighborhood and providing ways and means for such assistance as will inspire self-help.

4. The good of the city, by studying its government, executive, judicial and legislative functions, its parks, play grounds, street railways, water and lighting system, its Board of Health, libraries, art galleries, amusements, industries, public school sys-

tem, colleges, universities, churches and all other agencies that make for its good.

5. The good of the nation, its form of government, wherein it differs from a monarchy, absolute or constitutional, the relation of the national to state government, how the elective offices are filled, who fills the non-elective offices, the relation of this nation to other nations of the world. What treaties between our nation and other nations, our army, navy, commerce, postal system, public lands, irrigation, our rivers, deep water-ways, national park, reservations and all else peculiar to the nation that exists for the good of the people.

This requires a Club House of sufficient capacity to take care of 2,000 boys, resident and non-resident. Probable cost \$40,000.

### Industrial Training

1. The object of industrial training is to help the boy of 14 more or less, to find himself, which is no more, no less than *finding his ideal*.

Important age; important work; it may come early, it may come late, it may come never, if the last the highest success is impossible. To have an ideal so clearly in mind that it is an inspiration to increased effort is to have success almost assured.

2. Industrial training affords an opportunity to discover our aptitudes, our likes and dislikes and make such adjustment of ourselves to the world of work that we will find the place for which we are best fitted and in which we will make our greatest success.

3. Industrial training covering the main features of all trades, in the same house, controlled by the same superintendent, having the same purpose, will



## THE FORWARD MOVEMENT

cause a feeling of relationship to the workers, a realization of brotherhood and of the dignity of labor.

4. Industrial training, when properly organized, tends to extend our horizon and increase our appreciation of the possibilities of labor and thus protect the individual from the narrowing process of minor detail work, where each does only one thing and



BOYS CLUB

that without reference to its relation to other things or to the whole.

5. The workman's human relations, to fellow workman, to employer, to family. The wise use of wages and practical investments.

6. The study of biography of successful men, by lectures, incidents, anecdotes, stereopticon views and otherwise, should be thorough and extended.

This implies the erection of a building and furnishing the same with such appliances as may be necessary to give these boys a practical, industrial train-

ing in various lines of work in connection with methods and motive of conducting the same toward moral ends. Probable cost \$50,000.

A similar building specially adapted to girls should be erected. Probable cost \$30,000.

### Physical Culture

1. All of the customary appliances of a well equipped gymnasium, to be used for the betterment of society by making a stronger and in every way a more capable man in the contest between incompetency and efficiency.

2. The practical study of physiology, hygiene and public and private sanitation.

Probable cost \$20,000.

### Amusements

1. In this age of minute division of labor the mind imperatively demands relaxation.

2. The character of the amusements should be such as to do three things:

(a) They should arrest the attention from the work of the day; so there would be an entire change of thought.

(b) They should be interesting and amusing.

(c) They should be clean and elevating.

Probable cost of building \$20,000.

### The Social Life

1. Social life from 14 to 16 involves the mingling of the sexes—a critical period and should be wisely supervised.

2. A serious fact that in many families this supervision is sadly neglected, and in the disrupted family there is none at all.

3. No four years of life half so prolific of evil as this and so powerful for good if properly supervised.



4. The remedy is not in separation but in education and supervision or the proper culture of youth. Social Center, estimate cost \$40,000.

### **The Interpretation of Nature**

It should be such as to impress the youth with the every-where-ness of God.

1. By appreciation of natural law.

"I report, as a man may of God's work  
all's love, yet all's law."—BROWNING.

2. By the practical study of nature as seen in the plant life, in forest and field, in stones and stars.

3. In such work as is carried on by Mr. Burbank of California.

4. The use of conservatories for growing vegetables for winter use.

Already provided for by Nature Study School at Forward Movement Park.



RUSTIC BRIDGE

## Sources of Support

### A Square Deal

The struggling poor to whom The Forward Movement is devoting its thought, do not ask for Charity but for "a square deal"—this they do not get. There are reasonable grounds for complaint:

1. The only houses they can afford to rent are such as have been abandoned by the owners because of the running of some railroad or the building of a factory or something that destroys the desirability of the neighborhood as a place for rearing a family.

2. The rent of these houses is so high that the renter is compelled to confine himself to one or two rooms and the house becomes a bee-hive with no privacy whatever and in almost every case it is poorly ventilated and unsanitary.

3. The people who move out and most of the well-to-do are free to call the district "The Slums," which is felt by this struggling people to be a great wrong and is certainly a demoralizing influence.

4. With the outgoing of the well-to-do goes the churches and other creditable social institutions leaving the social condition of the community entirely unprovided for.

5. The breweries and distilleries seeing this mass of population deserted by all organized effort, civic or religious, except the Public School, seize upon it to furnish a place for legal social contact that means to the struggling poor a moral earthquake more destructive than Messina.

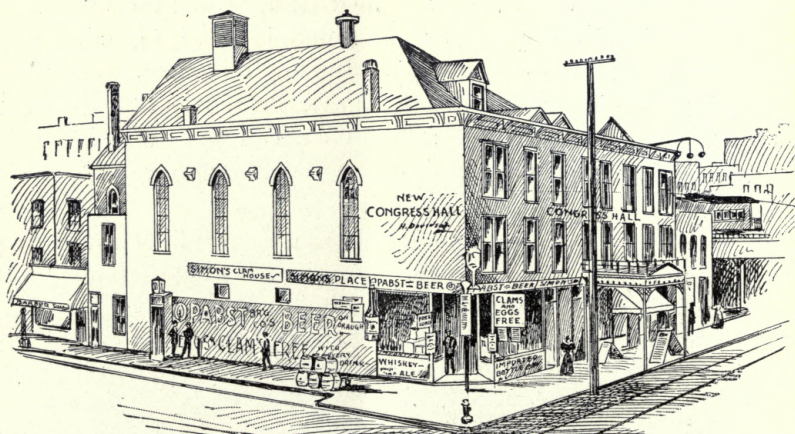
6. As a result there comes a disrupted family life; the necessity for the mother to become the bread-winner compelling the neglect of her children; the enforcement of the girls into the factory



# THE FORWARD MOVEMENT



WHERE SOME OF THE PEOPLE LIVE



THE FORWARD MOVEMENT FIRST HALL, WHERE  
85,000 HOMELESS MEN WERE PRO-  
VIDED SLEEPING QUARTERS

and the department stores; to the boys of 14, the most critical period of life, a tidal wave of most demoralizing influences which sweeps thousands of them into the vortex of criminality and over all and through all the organized hellish influence known as "White Slavery."

In behalf of these boys, these girls, these bread-winning women, these disrupted homes the cry of the Forward Movement is for "A SQUARE DEAL." The preceding program for "The Moral Training of Youth" is what we believe is demanded on the basis of a square deal rather than Charity.

The recent action of the people under the leadership of the Board of Health in providing for a Tuberculosis Sanitarium is a manly, noble act, but a thousand times more imperative comes the demand for an institution to prevent the spread of a moral tuberculosis that is destroying its multiplied thousands in this City.

As it is a question of moral training we cannot come to the State as in the former case, but we can and we do come *to the makers of the State*. We ask for six buildings costing probably \$200,000.

### Self-Support

Special effort is made toward self-support.

The amount received from Summer Outing for 1908 was \$5,449.45, and the current expenses was \$6,245.67, leaving a deficit of \$796.22.

We hope this year the Summer Outing will be entirely self-supporting, notwithstanding the large charity work carried on.

The income from the Settlement for 1908 was \$2,304.71, which shows a deficit of \$4,026.68, which was provided for by donations.



# THE FORWARD MOVEMENT

## Annual Donors

Two hundred and twenty-one persons and business firms made annual donations for the year of \$1,265.44.

## Monthly Donors

The financial report shows that twenty persons gave monthly donations to the amount of \$1,517.00.

## Membership

The following By-Laws show the financial con-



CRIPPLED CHILDREN ON RUSTIC BRIDGE LEADING TO  
PARLOR AND HOSPITAL TENT

sideration involved in becoming a member of the Forward Movement and the consequent stability of administration insured by such an investment:

## ARTICLE II.

### MEMBERSHIP.

SECTION 1. Membership to The Forward Movement shall consist of two classes: Life membership and annual membership.

SEC. 2. Life members shall consist of the present life members of The Forward Movement and shall hereafter pay to The Forward Movement \$500.00 for such life membership and

## SOURCES OF SUPPORT

---

shall be elected to such life membership by the Executive Committee.

SEC. 3. Annual members shall consist of such persons as shall hereafter pay \$100.00 each as initiation fee and annual dues of \$10.00 each, payable semi-annually, for such annual membership and shall be elected to such annual membership by the Executive Committee.

### **Loan Fund**

Many of the people to whom The Forward Movement is giving special attention, need at times a little financial assistance to help them in a trying situation. The only means they have to secure funds is through the pawn shop, which in most cases proves ruinous.

We find by being able to loan them a few dollars, it is a great help which is highly appreciated by them. In this way we have been able to help some very interesting cases.

Here is an opportunity to give money where it will help over and over again. We ought to have in this fund at least \$2,500.00. Send any amount and it will be sacredly kept to the purpose above indicated.

### **Endowment Fund**

Mr. Armour said in planning his Institute, "No one has a right to foist on the public, a philanthropy without providing for its support, leaving to the future the responsibility of its growth and increased expenses."

We feel the same way in regard to The Forward Movement, so we are laying the foundation of an endowment fund to take care of the current expenses. This endowment should increase as the current expense increases.

We are glad to report that the foundation is being built upon.

When you are making your will, remember The Forward Movement.



# THE FORWARD MOVEMENT



VESTA PUTNAM SUMMER SCHOOL AS SEEN FROM LAKE



CRIPPLED CHILDREN IN SCHOOL

### The Making of a Will

Those who desire to leave by will to The Forward Movement personal property or real estate may do so by including in the will this clause:

*I give, devise and bequeath to The Forward Movement, a corporation organized in accordance with the laws of the State of Illinois, (here insert amount of money, description of stocks, securities, furniture, library, or other personal property, or description of real estate which the testator wishes to convey in this manner).*

Those who wish to use The Forward Movement as an instrumentality for carrying into effect their wishes in the way of benevolence and betterment of society may give to The Forward Movement money or property to be applied along particular lines of benevolence and in a specified manner. If this is done, however, it would be well to have the assistance of some competent attorney. If anyone desires to consult the attorney of The Forward Movement, William H. Tuttle, Ashland block, Chicago, either for the purpose of making a donation or establishing a benevolent work while the person is living or after his death, The Forward Movement will be pleased to furnish such services free of charge. If desired, he will hold the matter of such negotiations in strict confidence.

Grow old along with me!

The best is yet to be,

The last of life, for which the first was made.

—BROWNING.





LAKE SHORE DRIVE

### From the Masonic Fraternities

Through the kindness of Nelson N. Lampert, the Illustrious Potentate of the Medinah Temple, A. A. O. N. M. S., we received from that organization \$1,000, to be expended in furnishing coal for the struggling, heroic families in our neighborhood, who greatly need temporary assistance.

The people were visited as neighbors and thus we learned of their necessities and through the above organization, was enabled to supplement the personal effort of 362 families.

No one can appreciate how much good this did only as they personally knew them through neighborly visitation. The incidents connected with these families are exceedingly interesting and in some cases very pathetic; too much so to become a matter of public notice.

Through the kindness and personal labors of Mr. John Heist, Thrice Potent Master Van Rensaeller Grand Lodge of Perfection, A. A. S. Rite, The Forward Movement received the day before Christmas a supply of 250 baskets of food that was richly filled with good substantial food which lasted some of the families an entire week. These baskets were given to very needy families that would have had no pleasant remembrance of Christmas, if it had not been for the generous donation from the above Masonic fraternities. The distribution of these baskets was an occasion long to be remembered. The expressions of gratitude as these women received their baskets was pathetic, and full of interest. The sad thing connected with it, however, was the earnest plea of those who had come thinking that there might be some baskets left out of which they might be supplied.

To both of these organizations, The Forward Movement on behalf of the recipients desire to express their gratitude and The Forward Movement wishes to assure you that a great deal of good was accomplished and many hearts made glad and in many cases, a new energy was imparted to these heroic families to fight bravely the battle of life.

#### Our Guarantee

A generous spirit is the expression of a great soul the fruit of this spirit is seen in kindly deeds for those in need.

If this need arises from a natural handicap, such as being crippled, blind, deaf or other misfortune, it at once makes its appeal to the best, the divinest element of our nature.

The only limitation is whether or not it will be wisely and economically administered; this The Forward Movement guarantees to all donors.



# T H E   F O R W A R D   M O V E M E N T

## Financial Statement for 1908

### ASSETS.

Real Estate, 305 W. Van Buren Street, Chicago, lot 96x180, valued.....	\$25,000.00
Real Estate, Forward Movement Park, Saugatuck, Mich., 130 acres, valued.....	10,000.00
Improvements, 1907.....	15,000.00
Improvements, 1908.....	3,478.63

\$53,478.63

### LIABILITIES.

Mortgage Indebtedness.....	\$ 4,000.00
Borrowed Money.....	2,209.02

\$ 6,209.02

### RECEIPTS.

Annual Donations .....	\$ 1,265.44
Monthly Donations.....	1,517.00
Sundry Donations. ....	1,126.02
Settlement House.....	2,304.71
Loans.....	1,518.00
Park—Donations on Improvements.....	3,721.11
Summer Outing Income.....	5,449.45

\$16,901.73

### DISBURSEMENTS.

City Current Expense—Light, Fuel, Janitor, Repairs, Insurance, Com., etc.....	\$ 1,136.31
Loaned .....	162.50
Boarding Department .....	480.97
Printing and Advertising .....	330.78
Emergency .....	1,978.80
Miscellaneous .....	370.45
Office Expense—Stationery, Postage, Sten- ographer, etc.....	451.71
Salary .....	772.00
Paid Borrowed Money .....	647.87
Mortgage Indebtedness.....	1,000.00
Park—Improvements.....	3,346.06
Current Expense .....	6,245.67

\$16,923.12    \$21.39

# *How to get there*

---



## Graham & Morton Transportation Co.

---

### TIME TABLE

Between Chicago and Grand Rapids,  
Holland, Macatawa Park, Ottawa Beach,  
and Saugatuck.

Effective on June 21, 1909.

Connecting with Pere Marquette and Michigan  
Central Railroads; Grand Rapids, Holland and  
Chicago Railway; Southern Michigan Railway Co.

To Grand Rapids every morning at 9 o'clock  
and every night at 8 o'clock.

To Saugatuck daily at 9 a. m. and 8 p. m.

To Holland daily at 9 a. m. and 8 p. m.

Berth Rates—Lower, \$1.00; Upper 75c.

Dock—Foot of Wabash Avenue.

Phone—Central 2162.



