

Graham and Morton line.

Graham & Morton transportation co., Chicago. [from old catalog]
[St. Joseph, Mich., A. B. Morse company, c1915]

<https://hdl.handle.net/2027/loc.ark:/13960/t7fr06g1k>

HathiTrust



www.hathitrust.org

Public Domain

http://www.hathitrust.org/access_use#pd

We have determined this work to be in the public domain, meaning that it is not subject to copyright. Users are free to copy, use, and redistribute the work in part or in whole. It is possible that current copyright holders, heirs or the estate of the authors of individual portions of the work, such as illustrations or photographs, assert copyrights over these portions. Depending on the nature of subsequent use that is made, additional rights may need to be obtained independently of anything we can address.

F 572
.M57 G7
Copy 1

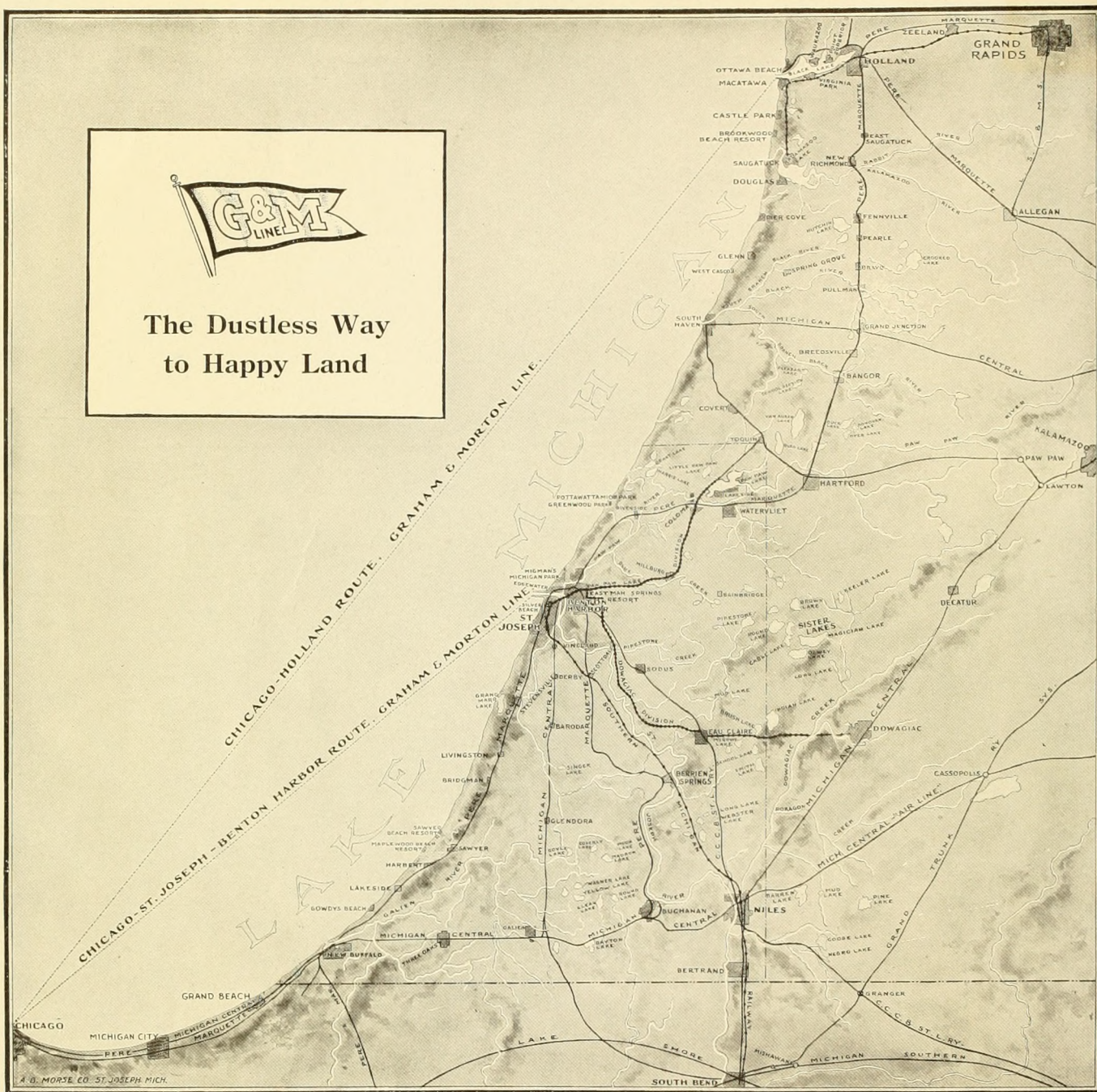
Safety First

GRAHAM AND MORTON LINE





The Dustless Way
to Happy Land



Map Showing Graham & Morton Line, Railway and Interurban Connections

Officers of the Graham & Morton Transportation Company

J. S. MORTON, President, Benton Harbor, Mich.
W. H. MORTON, Asst. to President, Chicago, Ill.
A. REICHEL, Asst. Sec. and Treas., Benton Harbor, Mich.
L. H. SEBASTIAN, Supt. Motive Power, Benton Harbor, Mich.
W. O'M. BURKE, Supt. Terminals, Chicago, Ill.

HARRY MEYER, G. P. & F. A., Chicago, Ill.
E. A. HOPPERSTEAD, Asst. G. P. A., Chicago, Ill.
J. P. HEFFERN, Commercial Agent, Chicago, Ill.
JOHN KRESS, Agent, Holland, Mich.
C. A. FLOYD, Agt. G. R. H. & C. Ry., Grand Rapids, Mich.

MAY -3 1915 ©CIA400227

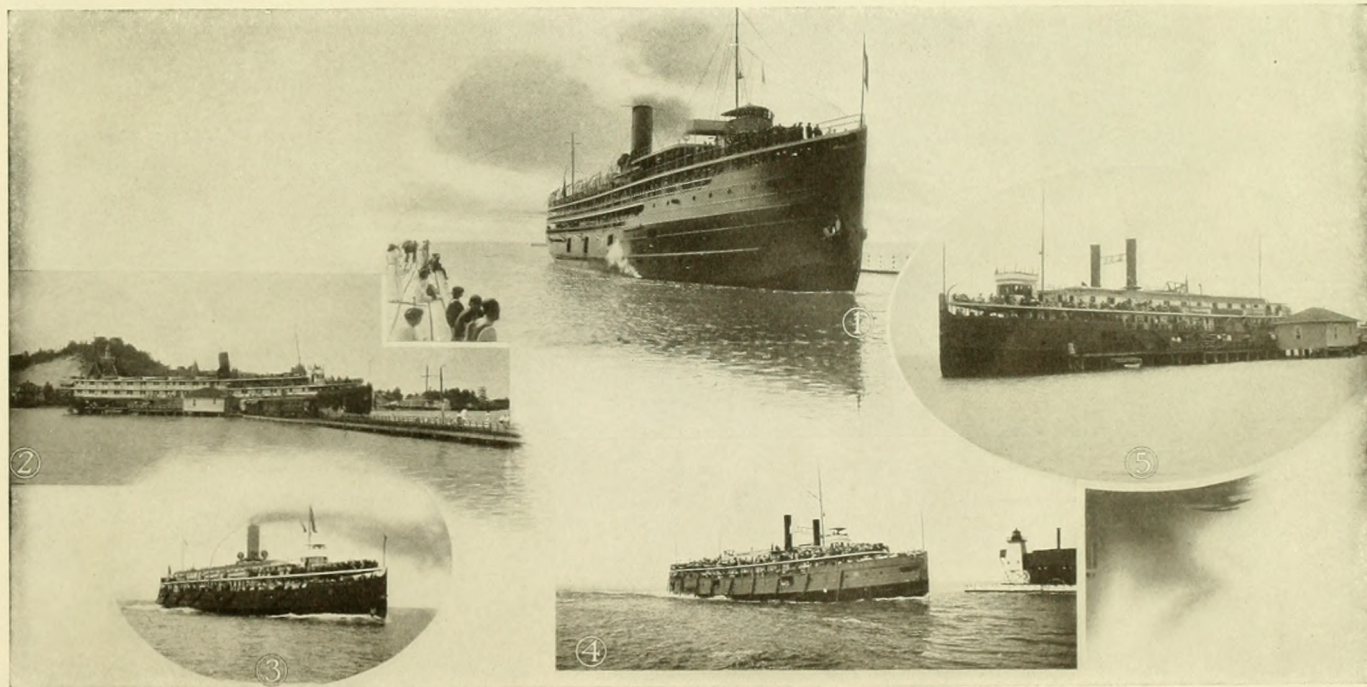
The Graham & Morton Passenger Fleet



THE STEAMSHIP "City of Grand Rapids," the latest ship acquired by this Company, is a most excellent example of modern marine architecture. A propeller, having a monstrous triple expansion engine developing 4,500 horsepower and a speed of 20 miles per hour, is 310 feet in length and 48 feet in breadth, built entirely of steel, and having two freight decks and three passenger cabin decks. The hull is divided into seven water tight compartments, any one of which is large enough to float the ship. The freight decks are covered with an asphaltum composition which has a tendency to lessen the sound of trucks when handling the freight, while the social hall and toilet rooms are covered with asbestone, and the cabins are all laid with the finest of carpets so that the sleeping passenger is not awakened by any ordinary movement around the steamer. This ship has 210 staterooms and 26 parlors, fitted with electric lights, call bells, running water, hair mattresses and woven wire springs, giving sleeping accommodation for 650 people, the largest capacity of any ship sailing from Chicago crossing Lake Michigan. A magnificent mahogany finished dining room with seating capacity for 100 people, as well as two private dining compartments, are located in the forward end of the main cabin, where one seated at a table can enjoy the cool breezes off the lake through the large windows. This wonderful ship, together with the sister ship, "Puritan," which is equally well fitted with modern equipment, will make two trips daily between Chicago, Grand Rapids, Holland, Macatawa Park, Ottawa Beach and Saugatuck.

On the St. Joseph and Benton Harbor Division we have three of the largest steel sidewheel steamers plying on Lake Michigan, making three trips daily between Chicago and Michigan's great fruit belt. The steamers "City of Benton Harbor," "City of St. Joseph" and "Holland" are well known for their spacious dance halls and cabins as well as promenade decks. Each steamer has carrying capacity for about 2,600 people, with ample room and large, comfortable steamer chairs for each person. All conveniences in the cabin, with maids at the service of the lady passengers, while bell boys are to be had at every call. The trip on any one of these ships is enjoyed by everyone.

The steamer "Holland" will be for charter morning, afternoon and evening to private parties, clubs, societies and other organizations. This ship is equipped with a large dancing floor, promenade decks and cabins where entertainments can be arranged to suit your program, and a trip along the lake shore for a few hours is a treat not to be forgotten. Very few people realize the beauty of Chicago's lake front with its tall buildings and boulevards lined with countless electric lights.



1—City of Grand Rapids

2—Puritan

3—City of Benton Harbor

4—City of St. Joseph

5—Holland

COPYRIGHTED 1915

15-10270



TRAVEL BY WATER—NO HEAT, DUST OR CONFUSION

WHEN the body and mind are weary and sluggish, caused by the grilling heat of the summer, the natural desire is to escape to some nice cool spot for recreation. Whether you are able to get away from the energy-sapping heat of the city for a month, a fortnight or only a day or two, the wonderful Michigan resort country, with its rolling hillsides, peaceful valleys, murmuring brooks, glassy lakes and natural forests gives a variety of scenery sufficient to satisfy the most critical. There are unbounded advantages for peaceful rest and healthful recreation, such as camping on the banks of one of the many rivers, staying at some one of the numerous farm and rural homes or at the large commodious hotels, which are superior to any other resort country. Fishing, hunting, boating, bathing and tramping through the woods are a few of nature's own amusements, while golfing, tennis, baseball and other athletic sports are all here to be enjoyed.

To reach this wonderful country, the Graham & Morton line steamers offer you the best of accommodation. Your vacation begins the moment you step on board ship, and when you reach your destination after a cool and pleasant, refreshing trip on Lake Michigan the last traces of lassitude have vanished and you walk ashore with renewed energy and added life. No expense has been spared by this company to make your trip to Michigan one of great pleasure and comfort. Music is furnished for those who desire to dance, sleeping accommodations are of the best, while the dining service is not excelled by the finest hotels in the land.



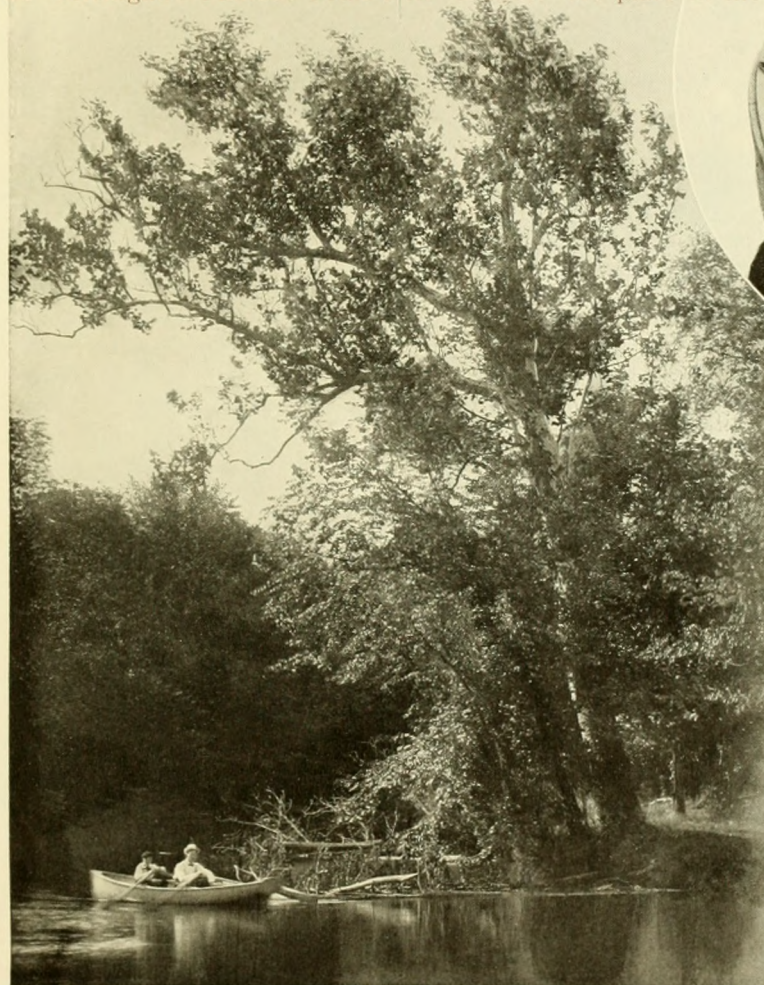
Silver Beach at St. Joseph, Michigan

THREE TRIPS DAILY TO ST. JOE-BENTON HARBOR



Old St. Joe and Its Attractions

In looking for a place to spend your summer outing you will find the first and oldest resort town in Michigan is St. Joe, 65 miles via the G. & M. line from Chicago across The Big Lake, a city of which many lyrics have been written by famous poets, making this resort one of lasting fame. It is situated on a most wonderful plateau overlooking summer months. To the east and back of the city is the broad river of St. Joe, which empties into the lake, and for miles south and north of this river along the lake shore are large estates and summer cottages. The starting point of what is known as "Michigan's Famous Fruit Belt" is here. No place in the



Boating on St. Joe River.

world can boast of such productions of fresh fruits; some of the many varieties are pears, peaches, plums, apples, cherries, grapes and berries, and the greatest of all of these is the Michigan Strawberry. Macadamized drive-ways extend for miles through the surrounding country, one of which, the "Lake Boulevard," is built along the top of the bluffs overlooking Lake Michigan, and leads past orchards and vineyards, with elegant homes bordering it on either side; the scenery together with delightful lake breezes makes this drive one long to be remembered. Another beautiful road "Peach Belt Way" is one that skirts along the shaded St. Joe river to Berrien Springs, a distance of sixteen miles over hill and dale, with acreage of fruit-laden trees the whole distance on either side, making a wonderful sight.

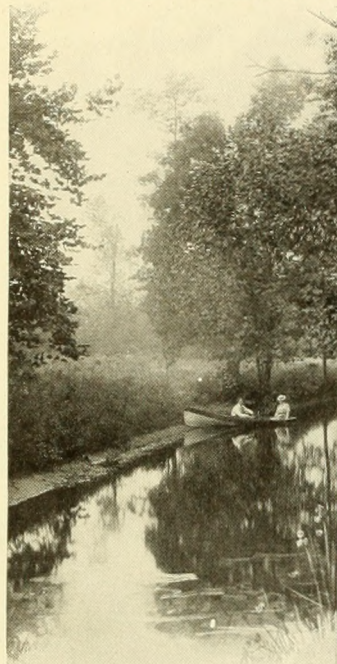


ENJOY YOUR WEEK-END IN NATURE'S GARDENS



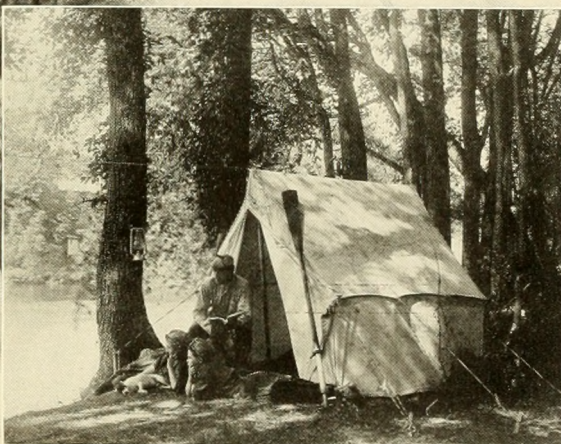
There are a number of fine hotels in St. Joe, among which is the Whitcomb with its famous mineral baths for treatment of rheumatism and nervous diseases. Remarkable cures are effected here and the baths are well patronized both summer and winter. The second hotel in size is the Lake View, directly across the street from the Whitcomb, overlooking the amusement park of Silver Beach, and is renowned for its fine appointments and service. There are other smaller hotels and numerous boarding houses throughout the city where at very reasonable rates accommodations may be had, and to those who prefer private life many of the best families have spare rooms they will let to desirable people.

Silver Beach Amusement Park, located on the beach at Lake Michigan, has all the most popular forms of fun-making that are to be found in larger cities, such as skating rinks, dancing pavilions, roller coaster, and above all, the grandest bathing beach in the west, as well as a natatorium, where one can bathe at their convenience, the water being heated to a moderate temperature all the time. The beach is of sand, with a gradual slope, no dangerous rocks, undertow or currents, making it a very pleasant and safe place for the adult to swim and the little ones to wade. On the crest of the hill is Lake Front Park, where many a pleasant



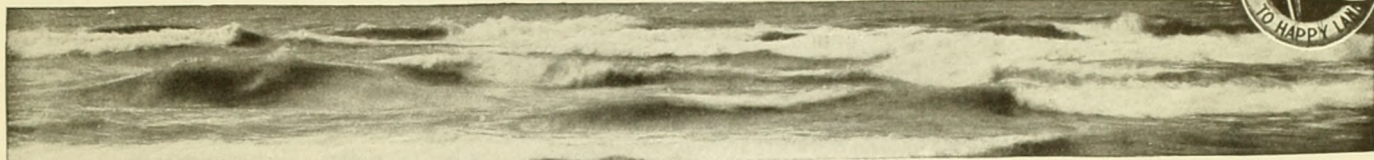
evening and Sunday are spent by vast numbers of people who congregate here to enjoy famous band concerts.

Three miles southeast of St. Joe is located the **Berrien County Country Club** with its more than comfortable club house, a splendid nine hole golf course, as well as tennis court and other amusements. All visitors are invited and the privileges of the club are extended at a nominal fee. To reach these



The Milton D. on the St. Joe River.

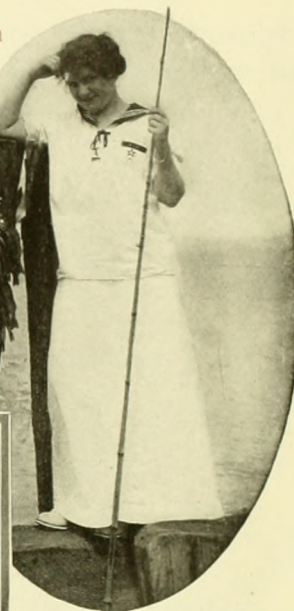
EVERY KNOWN AMUSEMENT AND RECREATION THERE



grounds you may drive over the splendid roads, take advantage of the Interurban cars, or launch up the beautiful St. Joe river.

The Edgewater Club, across the river north of St. Joe, on Lake Michigan shore, is the most exclusive resort in this community. The plan of the originators is to make this place a summer residence for those who desire the best and are able to afford it. A handsome club house and a number of beautiful private summer homes have been erected, the streets are paved with brick, lawns are sodded, and a park is made where once was nothing but fine white sand. At the club house meals are served to the guests as well as to the cottage resorters. Accommodations may be secured by writing to the Edgewater Club, St. Joseph, Mich. No expense has been spared to make this a very attractive and substantial resort.

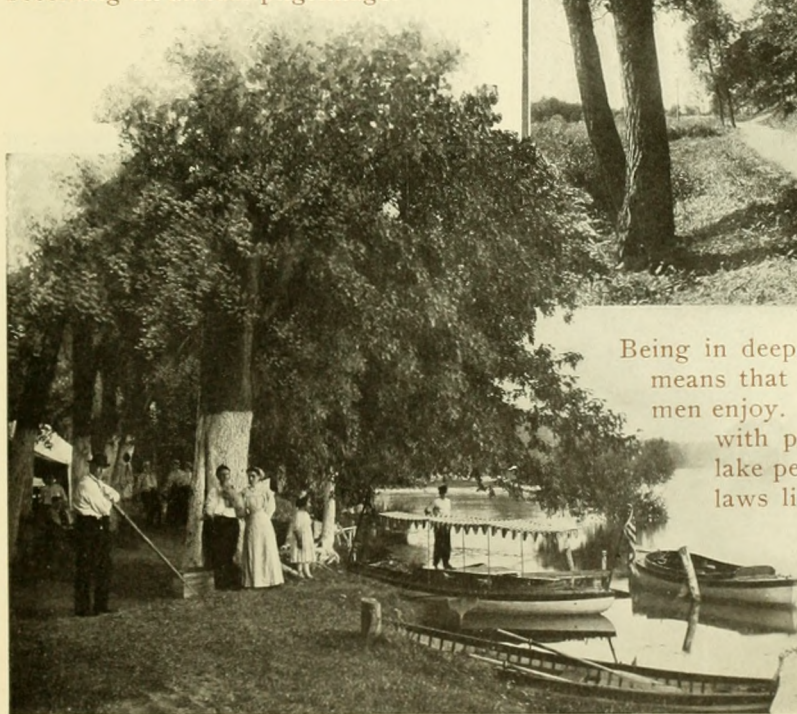
The St. Joe River flows through a luxurious valley flanked on both sides for miles with verdant forests, terraced vineyards and beautiful farms. A trip in one of the many boats is very delightful and to some is becoming an annual pilgrimage.



The fish hatcheries operated by the state stock the river each year with bass, pike, pickerel and other of the finny tribe, which affords the angler unlimited pleasure.

Being in deep, cold water, the bass are gamey and a strike means that peculiar nerve tingle which experienced fishermen enjoy. The pier at the mouth of the river is lined daily with people from all the different resorts fishing for lake perch, which swarm these waters. Michigan game laws limit fishermen to a catch of twenty white bass and ten black bass each day.

St. Joseph has all the amusements to be found in any first class summer resort, and one contemplating a vacation of one day to several weeks would have to travel for many miles to find a more delightful place for recreation and pleasure.



Camping and Fishing on the St. Joe River.



THE NIGHT TRIPS ARE PLEASANT, COOL AND COMFORTABLE

Benton Harbor and Interesting Places

Connecting with St. Joe by a wide brick boulevard, one mile east, is situated the pretty little town of Benton Harbor, with its miles of clean, paved, well lighted streets and pleasant homes. Here are found the best hotels in this region, among which is the New Dwan, furnished throughout with all modern improvements for comfort, every room having telephone, electric lights, hot and cold water, together with elevator service and mineral baths which are thoroughly up-to-date. The Hotel Benton under its new management is giving excellent accommodations to the commercial as well as the pleasure-seeking public. The New Saltzman Hotel in every way is modern, and many of those who have visited this city know of its fine service in the mineral bath department. The Premier Bath parlors, which are the oldest in this vicinity, are located in the center of the down town district, where the first mineral water was found that has now become renowned throughout the United States for its great curative properties. See our list of hotels and boarding houses in this booklet.

The House of David, the home of the Israelites, a religious cult situated on the car line just out of Benton Harbor, is one of the most interesting resorts in this territory. The extensive grounds are all set to fruits, vegetables and flowers, with a large recreation park attached in which you will find bowling alleys, dance hall, airdome, zoo, horticultural exhibits and other amusement features. The Sunday afternoon concert by a band composed of lady Israelites is one of the most pleasing entertainments. Street cars run direct from our docks to the park.

Higman Park, with its beautiful summer homes owned by people from every state in the south and west, is one of the most pleasant resorts in this territory and is situated on Lake Michigan shore among the high wooded hills. From the verandas of the hotel a beautiful view can be had of the surrounding country.

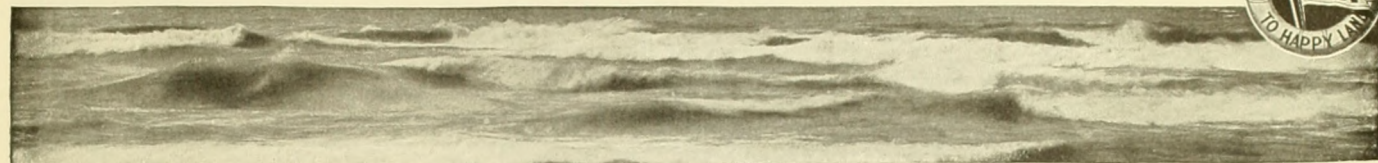
Pottawatomie Park, seven miles north of Benton Harbor on a bluff eighty feet in height overlooking Lake Michigan, is named from the oldest Indian tribe in Michigan, and is growing every year in popularity.

Purchase your ticket at our office in Chicago to Riverside and on arrival at the P. M. railroad depot the bus will transfer you through native forests, or if you desire you can take a large launch from the Central Docks up the lake shore to Higman and Pottawatomie Parks. This gives quicker dispatch as well as a very interesting trip.

Paw Paw Lake Resort is not only the largest, but best known summer resort in Michigan, deriving its name from a pleasing little body of inland water several miles in



THE DAY TRIPS ARE HEALTHFUL AND INVIGORATING

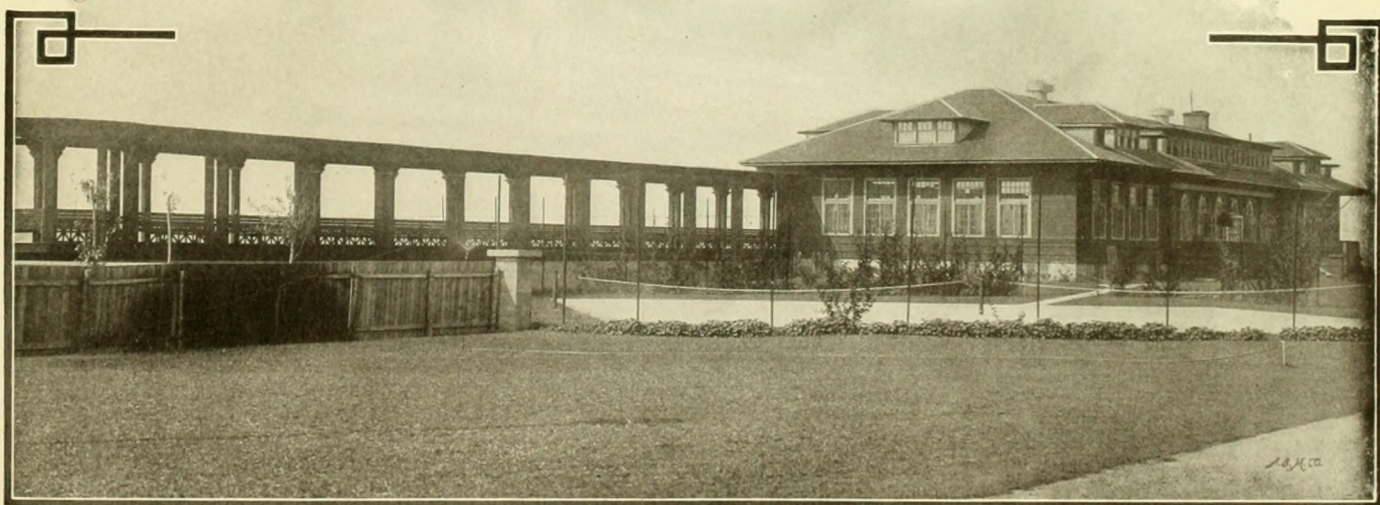


width and length, with the entire shore surrounded with summer cottages, hotels and boarding houses, all for the accommodation and comfort of the summer visitor and resorter. The clear, sandy beach makes bathing one of the greatest sports to be enjoyed here each day. Boating is one of the many amusements and moonlight boat rides are delightful. Dancing at the different pavilions together with band concerts are also attractions for the pleasure seekers. Crowds of people visit here the whole summer, and the week ends are extremely busy, Saturdays and Sundays being special gala days. Canoeing on the Paw Paw river is one of the finest recreations and should not be missed. The scenery along the river banks far surpasses any other trip of this kind. For your convenience purchase your ticket and check your baggage at Chicago Docks and our steamer will take you to Central Docks, where transfer to the interurban cars is made under cover with no trouble or delays.

Suburban Resorts and How to Reach Them

Arrangements have been made to transfer all passengers from Central Docks to the Southern Michigan Electric lines via the city street cars, which have their terminals at the docks, giving to all those who wish to reach their homes, resorts and camping grounds along the St. Joe river a service that is unequalled in the larger cities. Twin Springs resort, noted for its "Fountain of Youth Springs" and delightful river scenery, also the picturesque little city of Berrien Springs, are situated directly on the car line in the center of this resort section. You should be sure to take this trolley ride and enjoy the country.

The Benton Harbor-St. Joe Railway, which connects with our steamers at Central Docks, runs through the resorts along the east shore of the St. Joe river to Dowagiac, passing through the little city of Eau Claire and numerous river resorts, among which are Tabor's, Indian Lake and Sister Lakes, and other interesting places. This line opens up the finest resort country that was ever known. The Coloma, Paw Paw Lake and Watervliet branch runs through a grand fruit country to the greatest of all inland resorts, Paw Paw Lake, where from far and near are gathered thousands of young people for their summer outing. Coloma and Watervliet are two very inviting little cities and are surrounded by a very rich farming country. One should not fail to visit these places during the summer vacation.



Edgewater Club, St. Joseph, Michigan.



TWO TRIPS DAILY TO HOLLAND AND GRAND RAPIDS

Holland, Macatawa Park Ottawa Beach and Black Lake

Only ninety-eight miles from Chicago via the G. & M. boats, situated on Black Lake, is the city of Holland, a growing manufacturing, business and farming center, and with hotels, summer resorts and cottages it is fast becoming the ideal spot for people from the south, east and west to spend their vacations during the months of June, July, August and September. The Holland City Hotel, which is now under new management, has large and unexcelled accommodations, being well recommended by commercial travelers and summer tourists.

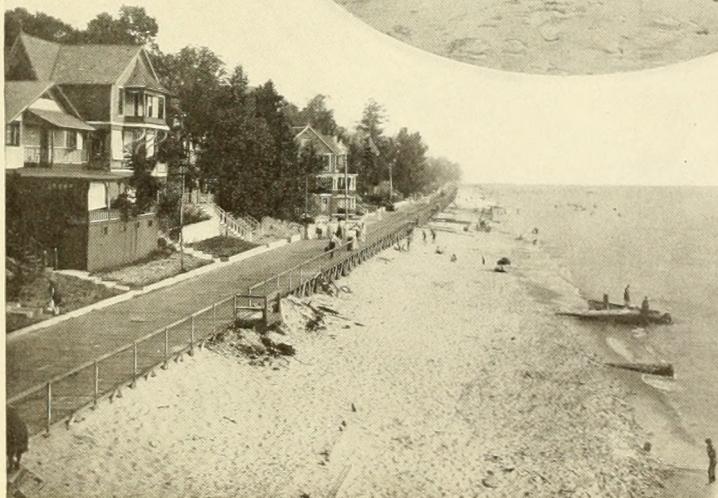
Of the East Shore resorts none is more popular with the summer visitors than Ottawa Beach and its nearby neighbors on Black Lake. Thousands come every season to these resorts, many of whom return year by year to enjoy its delightful climate and beautiful surroundings, as well as all the out-of-door recreations on both land and water. Ample hotel accommodation is one of the numerous reasons for its ever-increasing popularity.

All Ships of This
Company are
Equipped with
Wireless
Telegraph

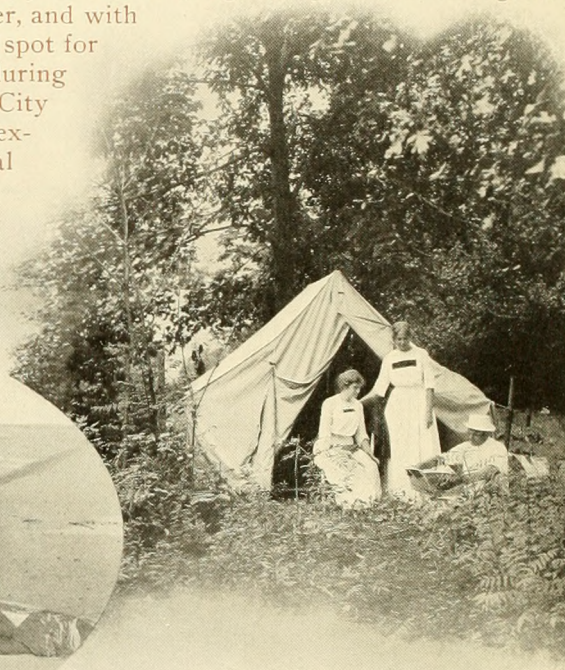


Ottawa Beach Hotel

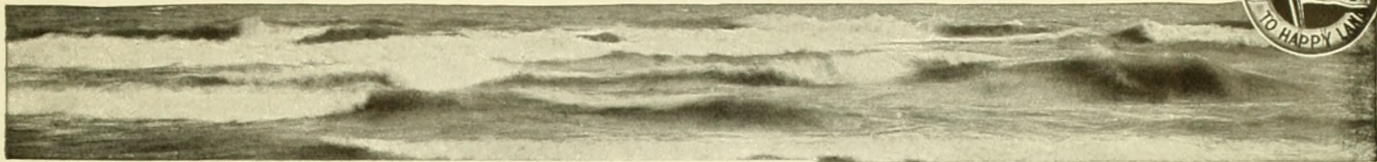
There is no finer summer hotel to be found anywhere than the Ottawa Beach Hotel, overlooking Black Lake and Lake Michigan, with its splendid faculty for every summer-time comfort and pleasure. On its broad verandas where the guests gather during the days, a fresh lake breeze brings relief even during the hottest days, and the nights are wonderful, the air delightful, cool and restful, no matter how warm the day has been, blanket covering is very comfortable. The hotel with its spacious lawns is practically surrounded by water, in fact the steamers of this company pass so close to the verandas that communication can be had between passengers and their friends. Many improvements have been made as well as being refinished,



Cottages at Macatawa Park.



MOST APPETIZING MEALS ARE SERVED ABOARD SHIP



Woodland Road.

Macatawa Park

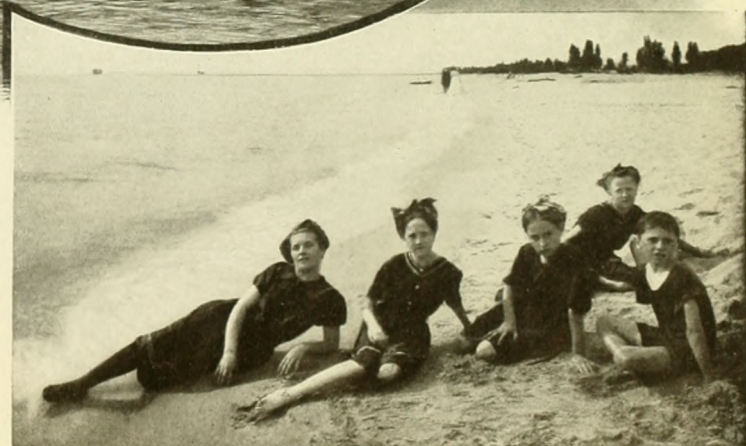
The Macatawa Park Association has a number of very pretty cottages for rent at reasonable prices.

The Hotel Macatawa is located in an ideal spot, as it combines the majestic grandeur of Lake Michigan with the quiet beauty of Black Lake, making it perfectly safe for summer boating and bathing for ladies and children. The hotel is built on a high commanding ridge giving a magnificent view of the great lake and inland water, having all the advantages and privileges of the great unsalted sea, making it a finely appointed hotel superbly situated. Surrounding the hotel on all sides are thickly wooded hills with

redecorated and equipped. The large ball room has been doubled in size and the dining room has been enlarged over one-third, with wide windows overlooking the lake. This addition is to be used during the evening as a grill room. A large glass sun parlor has been built adjoining the main lobby, the latter having been entirely re-arranged and improved. Forty baths have been added, giving to nearly every room a private bath, and the grounds have been beautified in many ways together with a tennis court and athletic field located near the main hotel; the golf links are located a short distance back of the hotel, where all resorters are welcome to try their skill and pass away pleasant hours. A competent instructor has been engaged to teach beginners.



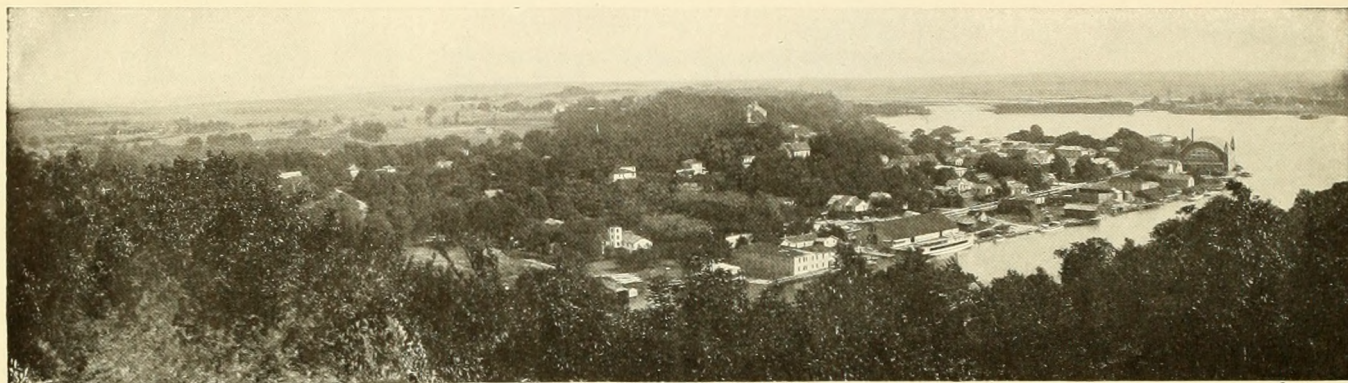
Old Ferry



Views Around Saugatuck.



YOUR VACATION IN MICHIGAN WILL BE BENEFICIAL

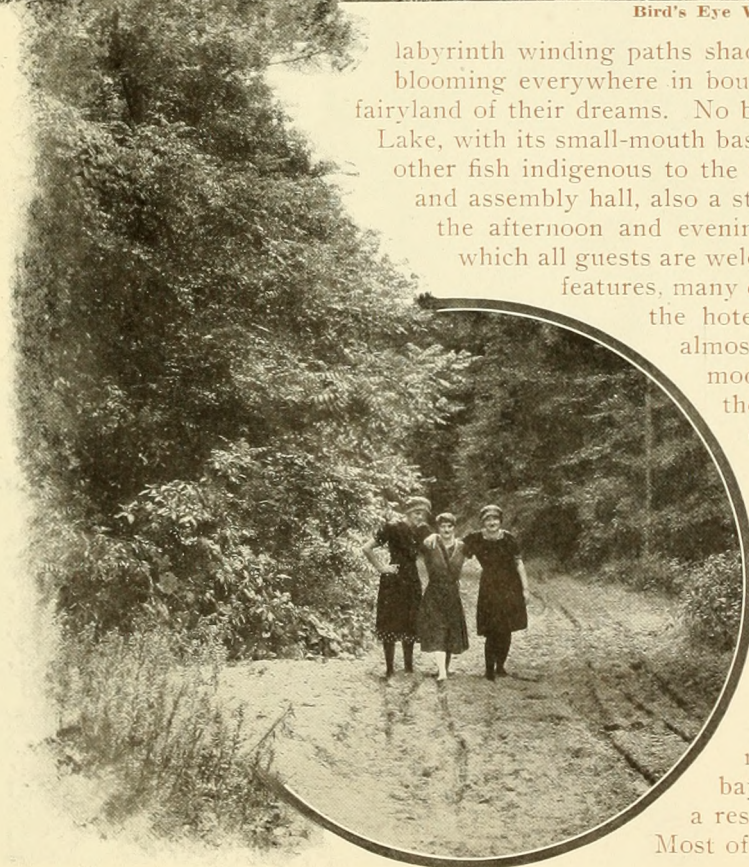


Bird's Eye View of Saugatuck.

labyrinth winding paths shaded by all kinds of forest trees and wild flowers blooming everywhere in boundless profusion. Nature lovers will find this a fairyland of their dreams. No better fishing is to be had anywhere than in Black Lake, with its small-mouth bass, pickerel, wall-eyed pike, muskalong and all the other fish indigenous to the northern waters. The hotel has a large concert and assembly hall, also a string orchestra which plays at dinner and during the afternoon and evening. Dancing is arranged for every evening, to which all guests are welcome, while boating is one of the most interesting features, many of the cottagers having their own launches, while the hotels have boat liveries at which you can secure almost any kind of craft to suit your pleasure. A large modern fire-proof garage has been constructed for the convenience of those who wish to have their cars with them. There are a number of other pleasant hotels, among which are the Bayview, European and Grand.

Waukazoo Inn and Resort

On the north shore of Black Lake is a very attractive family resort. The Inn is conducted with the best of everything, being supplied with poultry, eggs and fresh vegetables from its own garden as well as fresh milk from a private herd. There are also a number of cottages there that can be rented by the month or season. Situated on a bayou just around from the Inn is Camp Jeannette, a resort for those who wish to enjoy out-of-door life. Most of the people live in tents, and meals are served to



WRITE FOR BOOKLET GIVING LIST OF MICHIGAN RESORTS



the guests at a large bungalow which has been erected for that purpose; a large yacht is also furnished for those who enjoy sailing. Among other favorite resorts on Black Lake are Jenison Park, Virginia Park, The Beach House, High View Park and Marshall's.

At Interurban Pier, where the G. & M. Line land their passengers, ferry service is arranged to transfer all to the different hotels and cottage resorts with comfort and safety. The new steel steamer "Ottawa," with capacity for 250 people, has been built to transfer the passengers to Ottawa Beach Hotel direct.

Saugatuck and Douglas

Surrounded by wonderful forest-covered hills and valleys where paths lead through overhanging vines and wild flowers are the two quaint little cities of Saugatuck and Douglas, situated opposite each other on the shores of Kalamazoo river, which expands into a small lake at this point, making an ideal spot for those who wish to rest and recuperate. Many home-like hotels, as well as private residences, offer fine accommodations at a moderate rate, and to those who enjoy camping, tents can be rented at the grounds of the Forward Movement Park, which has a large property for resort purposes, also an elegant hotel which accommodates three hundred persons. Names and addresses of different places can be found in the last pages of this book. Boating and fishing in the river and lake are two great pastimes, and bathing in the river at the "Great Bend" is enjoyed by everyone who visits here. An immense pavilion, by far the finest building of its kind to be found in this section, has the largest floor for dancing in the middle west, as well as bowling alleys and skating rinks where hundreds of people gather to enjoy the different amusements, of which dancing is the most popular. There is an instructor to teach all the latest dances, while the music is furnished by a string orchestra composed of the best musicians. From Saugatuck a steamer may be taken for a fifteen mile ride up the river, which presents many pretty scenic effects and affords good fishing. Macadamized roads have been made to Holland and Grand Rapids, giving to those who enjoy automobiling a very pleasant journey through the country. Service given by the electric roads connecting with our boats at Interurban Pier, passing Castle Park and other resorts, makes a trip in twenty-five minutes from the time one leaves the boat until they reach Saugatuck. This schedule will be maintained all during the season.

Grand Rapids

Known as the "Furniture City" on account of its famous furniture designers and manufacturers, and the center of the furniture industry of the world, is the second city in Michigan. There are also several hundred other industries here, including carpet-sweeping works, textile factories, machine companies, steel product factories, plaster, paper and flour mills, many engraving and printing establishments. Through the center of the city flows the Grand river, and along its shores are numerous resorts, homes and beautiful parks. Reed's Lake, on the south side of the city, is a body of water several miles in circumference used as a place of entertainment for the pleasure-seekers and is circled with a boulevard, making an ideal drive for automobiles. Ramona, a summer park and resort, is a high class amusement place, and during the summer season best vaudeville as well as other features offer enjoyment to the visitor afternoon and evening.

The Graham & Morton Line with its fine steel steamships and the Grand Rapids, Holland & Chicago Railway with its double track and handsome steel cars give a service between Chicago and Grand Rapids that is unequalled, being known as the "Grand Rapids Short Line," making the trip in seven hours. Direct connections are made at Interurban Pier, where the boats and cars are in waiting, transfer being made under cover without exposure to weather elements. During the summer season the boats will leave Chicago every morning except Saturday at 9:00 A. M., when the schedule is changed to 1:30 P. M.; also every evening at 8:30 P. M., except Sundays at 10:00 P. M., giving a delightful daylight trip or a good night's rest on the steamer. During the spring season, which opens about March 1st, also in the fall season, our steamers run daily, leaving Chicago every evening.



Bird's Eye View



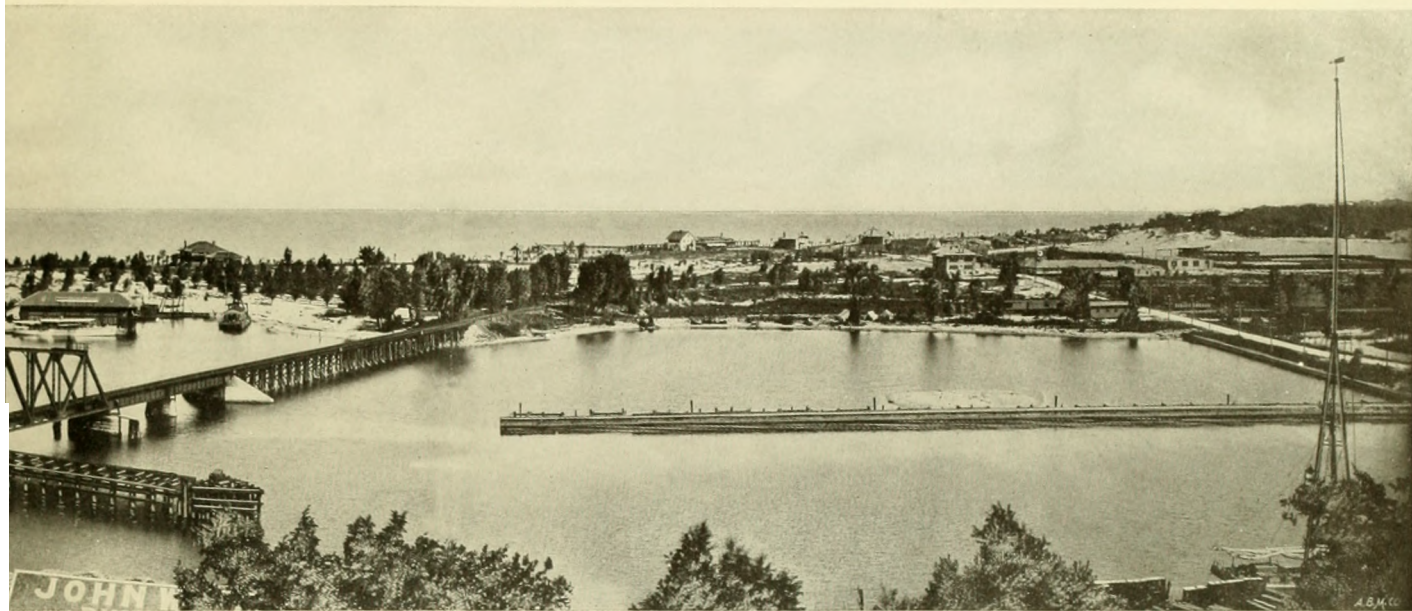
Ottawa Beach

S. S. City of Grand Rapids

S. S. Puritan

Waukazoo

Holland



Joseph Harbor



Macatawa Park



G. & M. MOTTO—"SAFETY FIRST; COURTESY ALWAYS"

Travel Via Graham & Morton Line

For the convenience of the traveling public, the Graham & Morton Docks in Chicago (foot of Wabash Avenue) are located within easy transportation from North, West or South Sides, also from every railroad depot and hotel, where together with the short trip on one of the large, commodious boats of this line across the finest body of water in the world to "All Michigan," the great resort country, connection is made with electric and steam roads for all interior points, among which are West Olive, Ferrysburg, Lakewood, Montague, Shelby, Hart, Pentwater, Twin Lakes, Holton, Fremont, Newaygo Lakes, Baldwin, Traverse City, Cadillac, Reed City, Greenville, Alma, St. Louis, Bay City Saginaw, Ionia Lansing and Detroit.

The location of the St. Joseph-Benton Harbor division Central Docks is at the east end of the highway bridge crossing the St. Joseph river, on the main thoroughfare, midway between St. Joseph and Benton Harbor, fronting on the local street railway tracks, also the terminus of all interurban lines, where direct connection is made under one roof with interurban cars for South Bend, Niles, Berrien Springs, Twin Springs, Dowagiac, Kalamazoo, Indian Lake, Sister Lakes, Eau Claire, Tabor's, Paw Paw Lake, Coloma, Watervliet, Hartford, Bangor, Fennville, Paw Paw, Lawton, Covert and Millburg; also for transfer to the Big Four, Michigan Central and Pere Marquette railroad depots.

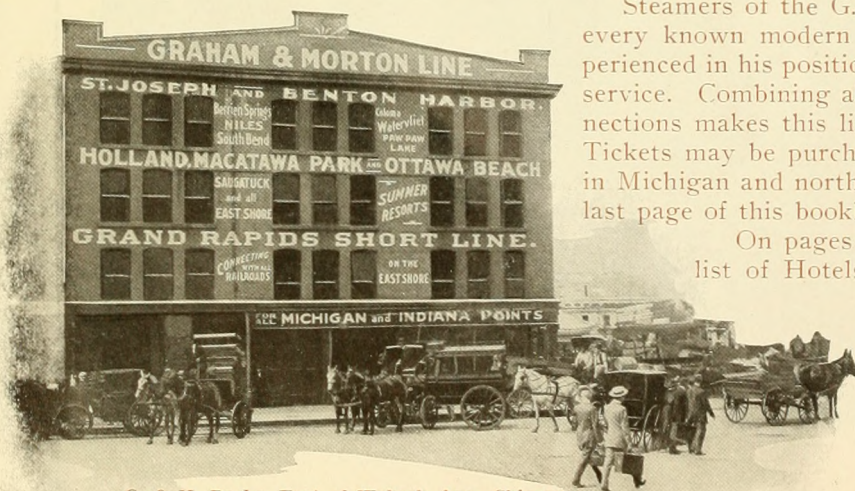
A large, roomy warehouse, 310 feet long by 50 feet in width, two stories in height, has been erected for the accommodation of patrons. Passengers from the street enter on the second floor, where spacious waiting rooms are provided, entrance being made to the steamers from this floor without the annoying feature of passing through the quarters used for freight purposes.

The Interurban Pier gives to Ottawa Beach, Macatawa Park, Grand Rapids and Saugatuck a much needed central transfer point. Passengers for all the resorts on Black Lake on leaving boat at this pier may be ferried to all places by a fine steamboat built especially for that purpose. Those going to Saugatuck or Grand Rapids will board the waiting cars, under canopy covering built to protect against the weather, and be on their way without any inconvenience or unnecessary delay.

Steamers of the G. & M. Line are all of steel construction, with every known modern convenience. Every officer on board is experienced in his position, assuring safety, courtesy, comfort and good service. Combining all this with a pleasant water trip and rail connections makes this line a favorite route for pleasure and business. Tickets may be purchased at the Chicago ticket office to all points in Michigan and northern Indiana. For local schedule and rates see last page of this booklet.

On pages 18, 19, 20, 21 and 22 you will find a complete list of Hotels and Summer Boarding Places in this territory, all of which are of the very best. By corresponding with the different parties you can no doubt locate one that will please you.

All Ships of This Company are Equipped with
Wireless Telegraph.



G. & M. Docks, Foot of Wabash Ave., Chicago.



How to Make a Vacation Profitable

A great many men of moderate means declare that they can not afford to take a vacation in summer time; they can and do send the family away to some resort where, even though the service of hotel or boarding house may be the best that money can buy, there is never the comfort that is to be had in one's own home. Therefore, on the score of economy, and also because of the greater comfort of the family, why not have a summer home?

Owning a summer home in the nearby lower Michigan country is perfectly feasible for the Chicago business man. Scores of them are now land owners in this section, and are not only making the summer home pay for itself in the added comfort it brings to the family vacation, but they are actually making it show a profit. A five-, ten- or twenty-acre "ranch" in this section of Michigan, set to fruit, and with chickens as a side line, can, with proper management and attention, be made to pay well.

There are a number of conditions which

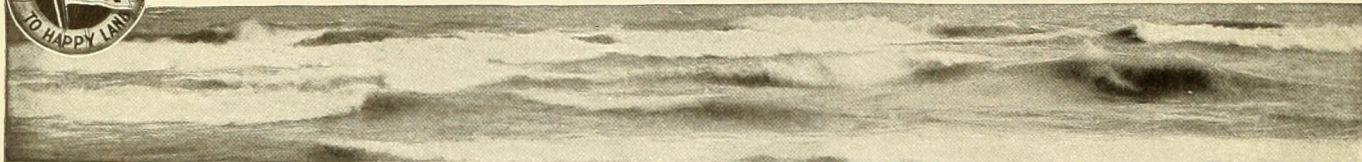


Berrien County Peach Orchard and Farm Home.

enter into the possibility of success in making the summer home pay. For the majority of men the first of these conditions means nearness to Chicago. This section of Michigan is accessible from Chicago in from four to six hours' time by the Graham & Morton Line, and steam and electric railroad



MICHIGAN'S ROADS ARE BEST FOR AUTOMOBILING



connections at the several Michigan ports. The cost of transportation is but little higher than living within twenty miles or so of the city. This is the fruit country; climate and soil are perfectly adapted to growth of tree and bush fruits and vegetables.

Any information required regarding this territory will be gladly given upon your application at the Graham & Morton offices in Chicago, Benton Harbor or Holland.

Automobiling No state in the Union has developed and improved the country roads in the past few years like Michigan. The laws of the state give to each county certain rebates for these improvements, and every attention is given toward the betterment of each road, so that today you can ride for miles and miles over the best macadamized roads through the finest farming countries in the world, making automobiling a great pleasure for a day or week's trip. Each year automobile parties are increasing, taking advantage of the delightful day or night trips on the G. & M. line to St. Joseph, Benton Harbor and Holland, shipping their car on the same boat, and on arriving at destination speed off into the country over these delightful roads. Your automobile should be at our dock at least thirty minutes before sailing in order that gasoline can be properly drawn from tanks (a marine law that is rigidly enforced). A receipt for the gas drawn is given to the shipper, which on being presented to agent at end of trip, same amount of gas is returned with no extra charge for services rendered. The following are rates for automobiles handled by this line:

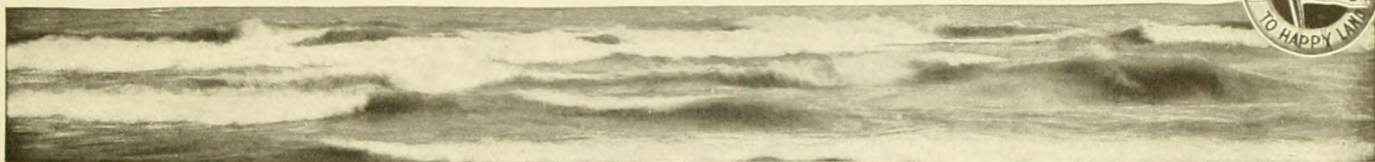
Runabouts not exceeding three passengers—To St. Joseph-Benton Harbor, one way, \$4.00; round trip, \$6.00, prepaid. To Holland, one way, \$5.00; round trip, \$7.50, prepaid.

Touring cars, four passengers or more, racing cars—To St. Joseph-Benton Harbor, one way, \$5.00; round trip, \$7.00 prepaid. To Holland, one way, \$7.50; round trip, \$10.00 prepaid.



Automobiling on the Lake Shore Drive, South of St. Joseph.

MICHIGAN HAS IDEAL CAMPING GROUNDS



The Graham & Morton Line, Pere Marquette R. R., and Detroit & Cleveland Navigation Company afford to one wishing to visit Detroit, Cleveland, Buffalo, Niagara Falls, Toronto, Montreal, Boston or New York a trip of most interesting pleasure, breaking the long all-rail or all-water ride. Leaving Chicago at 9:00 A. M. or 8:30 P. M. daily, you have a delightful day or restful night on Lake Michigan, arriving at Holland in six hours, where connection is made with P. M. R. R. through the heart of Michigan's great grain country to Detroit; then via D. & C. steamer to Cleveland or Buffalo, where boat and rail connections are made for eastern points. The lake and rail trip make a most enjoyable combination for anyone contemplating a real trip for pleasure and recreation.

A trip to Cleveland or Buffalo from Chicago takes two nights and one day on the finest steamers sailing fresh water, giving ample time to see the points of interest in the different cities as well as enjoying the fresh air on the waters of Lake Michigan and Lake Erie, with but six hours of railroad in the whole journey. The passenger fare, meals and berths extra, is \$8.58 one way, \$16.41 round trip, to Cleveland; \$10.08 one way, \$19.41 round trip, to Buffalo.

A cool trip on the water, whether on business or pleasure, is relished by everyone. The fast



lake boats of the present time nearly equal the speed of railway trains and the expense is much less. You also have every comfort of home in traveling by the water route.

Below we give a rail and water schedule, showing time of arriving at and departing from the various points.

Schedule

Lv. Chicago via G. & M. Line.....	9:00 A.M.	8:30 P.M.
Ar. Holland via G. & M. Line.....	4:00 P.M.	4:00 A.M.
Lv. Holland via P. M. R. R.....	4:24 P.M.	5:25 A.M.
Ar. Detroit via P. M. R. R.....	10:00 P.M.	12:05 P.M.
Lv. Detroit via D. & C. N. Co.....	10:45 P.M.	5:00 P.M.
Ar. Cleveland, D. & C. N. Co.....	6:00 A.M.	
Ar. Buffalo, via D. & C. N. Co.....		9:00 A.M.
Lv. Cleveland via C. & B. Line.....	8:00 P.M.	
Ar. Buffalo, via C. & B. Line.....	7:30 A.M.	

For further information inquire of Ticket Agent, or address Mr. H. Meyer-ing, G. P. A., Chicago, Ill.



Recreation at Paw Paw Lake.

List of Summer Boarding Places

Available to patrons of the Graham & Morton Line, together with a brief description of rates, accommodation and location. Further particulars will be furnished by addressing the proprietors of the several resorts and private homes personally.

GROUP NO. 1.—ST. JOSEPH HOTELS. Take Graham & Morton Steamers to St. Joseph.

Name of Hotel, Resort or Residence	Name of Proprietor	Postoffice Address	Rates		Accommodations	How Reached from G. & M. Docks	Features of Location and Remarks
			Day	Week			
Hotel Whitcomb	W. A. Walker	St. Joseph, Mich.	Apply	Apply	500	City Cars	Mineral baths in connection.
Lake View Hotel	Mr. Lewis	St. Joseph, Mich.	Apply	Apply	300	City Cars	Bluff overlooking Lake Mich.
Hotel Rose	F. N. Absalom	St. Joseph, Mich.	Apply	Apply	75	City Cars	Facing Lake Front Park.
May Hotel	George Walker	St. Joseph, Mich.	\$1.25	\$7.00	100	City Cars	Home cooking, outside r'ns.
Palace Hotel	Dan Muth	St. Joseph, Mich.	\$1.50-\$1.75	Apply	50	City Cars	American and European.
Newport House	St. Joseph, Mich.	St. Joseph, Mich.	\$0.50-\$1.00	Special	20	City Cars	Near river and lake.
Whitcomb Mineral Bath	Edgewater Club	St. Joseph, Mich.	Apply	Apply	City	City Cars	Finest bath house in Mich.
Edgewater Club	A. W. Gustafson	508 Broad St.	Apply	Apply	Bus	Bus	Right on Lake Michigan.
Hotel LaSalle			\$1.00	\$3.00 up	City	City Cars	Bluff overlooking Lake.

GROUP NO. 2.—BENTON HARBOR HOTELS. Take Graham & Morton Steamers to Benton Harbor.

Hotel Benton	E. C. Richardson	Benton Harbor, Mich.	Apply	Apply	---	Bus or Benton Harbor Cars	Refurnished throughout.
Hotel Dwan	C. E. & J. W. Dwan	Benton Harbor, Mich.	Apply	Apply	---	House of David Cars	New; modern; 100 rooms.
Hotel Saltzman	Dr. W. E. Saltzman	Benton Harbor, Mich.	Apply	Apply	100	Benton Harbor Cars	Min. baths near Ry. & dock.
Hotel Eastland	Mrs. J. T. Owens	Benton Harbor, Mich.	Apply	Apply	---	Any Benton Harbor Car	Located on car line.
Phoenix Hotel	M. J. Schroll	Benton Harbor, Mich.	Apply	Apply	---	Any Benton Harbor Car	In business section.
Premier Bath House	R. J. Laughery	Benton Harbor, Mich.	Apply	Apply	---	House of David Cars	Original bath house, fd. 1898.
European Hotel	T. C. Arnold	110 W. Main St.	Apply	Apply	---	House of David Cars	Clean, sanitary rooms.
Ideal Restaurant	T. C. Arnold	108 W. Main St.	Apply	Apply	---	House of David Cars	Hotel in connection.
Michigan Inn	Frank Glover	196-198 Colfax Ave.	\$0.50-\$1.50	Apply	---	Any Benton Harbor Car	American and European.
Higman Park Inn	R. D. Flood	Benton Harbor, Mich.	\$2.00	---	75	Notify Proprietor	Select family resort.

GROUP NO. 3.—ST. JOSEPH AND VICINITY. Take Graham & Morton Steamers to St. Joseph.

Private Residence	Mrs. G. E. Schoff	1302 Niles Ave.	Apply	Apply	12	South St. Joseph Car	Fine large rooms with bath.
The Esnor	S. Ronse	1446 Lake View Ave.	Apply	\$8.00-\$10	---	So. St. Joe Car to So. State	On bluff overlooking lake.
Furnished Rooms	Mrs. R. A. Lupton	117 Wayne St.	Reasonable	Apply	---	Any St. Joseph Car	Nicely furnished rooms.
Private Residence	Mrs. Geo. Walls	712 State St.	Apply	Apply	---	So. St. Joe Car to Pearl St.	Rooms, light housekeeping.
Fur. House for Rent	Mrs. E. D. Jacobs	915 Church St.	Reasonable	Apply	---	So. St. Joe Car to Jones St.	Nine rooms; large yard.
Old Kentucky Home	Mrs. C. P. Johnson	719 Lake Blvd.	Apply	Apply	40	Any St. Joseph Car	On bluff overlooking lake.
Old Ky. Home Annex	Mrs. C. P. Johnson	317-321 Lake Blvd.	Apply	Apply	50	Any St. Joseph Car	On bluff overlooking lake.
Private Residence	Mrs. E. H. Manley	Langley Ave.	Apply	Apply	20	Will meet if notified	On bluffs of St. Joe River.
Private Residence	Mrs. B. F. Brown	722 Langley Ave.	Apply	Apply	---	So. St. Joe Car to Pearl St.	Fur. rooms, priv. of kitchen.
Private Residence	O. W. O'Riley	815 Lake Blvd.	Apply	Apply	8	South St. Joseph Car	Board, rooms; close to lake.
The LaSalle	A. W. Gustafson	815 Broad St.	Apply	Apply	---	Any St. Joseph Car	Rooms, light housekeeping.
Private Residence	Mrs. John Walker	707 Court St.	Apply	Apply	---	So. St. Joe Car to Pearl St.	Nine rooms, block from car.
Private Residence	Mrs. Chas. Rowe	714 Water St.	Apply	Apply	---	Any St. Joseph Car	Nicely furnished rooms.
Private Residence	Mrs. A. Vance	815 Port St.	Apply	Apply	---	Any St. Joseph Car	Nicely furnished rooms.
Private Residence	Mrs. B. F. Francis	715 Broad St.	---	\$2.00-\$5.00	---	Any St. Joseph Car	Rooms, light housekeeping.
Private Residence	Mrs. Harry Ewing	1020 Market St.	---	\$2.00-\$3.50	---	So. St. Joe Car to Market	Nicely furnished rooms.
Private Residence	Mrs. Harry Ewing	1020 Market St.	\$1.25	\$7.00	6	So. St. Joe Car to Market	Room and board.
Private Residence	Mrs. Louis Shire	1022 Market St.	---	\$2.00-\$3.50	---	So. St. Joe Car to Market	Nicely furnished rooms.
Private Residence	Mrs. Louis Shire	1022 Market St.	\$1.25	\$7.00	6	So. St. Joe Car to Market	Room and board.
Private Residence	F. G. Chrest	500 State St.	Apply	Apply	---	Any St. Joseph Car	Six newly furnished rooms.
Private Residence	Mrs. J. K. Opel	101 Wayne St.	Apply	Apply	---	Any St. Joseph Car	Room, board; home cooking.
Private Residence	Mrs. J. E. Bort	1135 Niles Ave.	Apply	Apply	---	So. St. Joe Car to Harrison	Rooms, light housekeeping.
Furnished Cottages	A. Risto	Life Saving Station	Apply	Apply	---	Notify proprietor	Elec. light, running water.
Private Residence	Mrs. E. F. McIntyre	321 Main St.	Apply	Apply	---	Any St. Joseph Car	Board and rooms; modern.
Private Residence	Mrs. Carter	413 Main St.	Apply	Apply	---	Any St. Joseph Car	Furnished rooms.
Fur. Bungalow for Rent	Fred E. Stebbins	Life Saving Station	\$100 per season	---	---	Notify proprietor	Write for particulars.
Fur. Cottage for Rent	Mrs. E. Gange	117 Main St.	Apply	Apply	---	Any St. Joseph Car	Electric light, water, bath.
Private Residence	Mrs. A. R. Gould	410 Court St.	Apply	Apply	---	South St. Joseph Car	Furnished rooms; modern.
Private Residence	Mrs. E. M. Plumb	Block from City Hall	---	\$3.50-\$5.00	---	Any St. Joseph Car	First class rooms.
Shadyside Resort	Mrs. Bertha Guenther	1446 Napier Ave.	\$1.50	\$8.00-\$9.00	---	So. St. Joe Car to So. State	Modern place; home cooking.
Reveria Resort	Mrs. Gertrude Antrim	950 Wisconsin Ave.	\$1.00	\$7.00	---	So. St. Joe Car to Wisconsin	Near beach; home cooking.
Private Residence	Mrs. W. F. Brown	314 Church St.	\$1.00-\$1.50	\$3.00-\$5.00	---	Any St. Joe Car to Church	Modern home; down town.
Private Residence	D. Williams	815 Broad St.	Apply	Apply	---	Any St. Joe Car to Broad St.	New and modern.
Fur. Cottages for Rent	Drake & Wallace	St. Joseph	Apply	Apply	---	Any St. Joseph Car	On the beach; modern.
Private Residence	Mrs. R. Cassidy	Cleveland Ave.	Apply	Apply	20	So. Bend Inter. from St. Joe	Write for information.
City Fruit Farm	A. C. Brummal	Lake Shore Drive	---	\$5.00-\$8.00	---	Notify proprietor	Fine bathing, shady lawn.
Private Residence	Mrs. Fred Eichorn	R. D. 1, Box 205	---	\$6.00	12	Notify owner	Write for particulars.
Private Residence	F. W. Ormsby	1203 State St.	Apply	Apply	---	So. St. Joe Car to Jones St.	Overlooking lake; modern.
Slanker Farm		R. D. 1	Apply	Apply	---	Write for particulars	Plenty shade, fruit, fishing.
Private Residence	Mrs. H. Rahn	512 Wayne St.	Reasonable	---	---	Any St. Joe Car	3 mod. rms. for light house

GROUP NO. 4.—BENTON HARBOR AND VICINITY. Take Graham & Morton Steamers to Benton Harbor.

Crystal Resort	Mrs. M. Scher	346 Fair Ave.	Apply	Apply	---	House of David Car	Home cooking; sanit'y rms.
Private Residence	Mrs. A. L. Wilcox	593 Edwards Ave.	Apply	Apply	---	House of David Car	Good board; fine location.
Orchard Grove Farm	Mrs. Thos. Kenney	R. D. 6	---	\$7.00	---	Dowagiac Inter. to Napier Av	Pleasant, shady location.
Meadow Brook Farm	Mrs. G. Decker	R. D. 1	\$1.00	---	---	Notify proprietor	Write for particulars.
Empire Resort		357 Empire Ave.	---	\$10.00	---	Take Fair Plain Car to Door	Home cooking, can't be beat.
Locust Lawn Farm		Territorial St., R. D. 2	\$1.25	---	---	Block from three car lines	Fresh fruit and eggs.

All Ships for St. Joseph and Benton Harbor land at the Central Dock, midway between the two cities.

GROUP NO. 4—Continued.

Name of Hotel, Resort or Residence	Name of Proprietor	Postoffice Address	Rates		Accommodate	How Reached from G. & M. Docks	Features of Location and Remarks
			Day	Week			
Cohn's Farm Resort	Cohn	Empire Ave.	Apply	Apply	30	Dowagiac Car from Docks	Furn. rooms; spring water.
Kennedy's Farm	Mrs. M. Kennedy	R. D. 5	Apply	Apply		House of David Car	Thirty acre farm; fruit.
Vernon Farm House	Roy Vernon	E. Empire Ave.	Apply	Apply		Dowagiac Car	Write for particulars.
Fur. Rooms and Board	Mrs. Fanny Berry	R. D. 5	Apply	Apply	12	House of David Car	Fifteen acre fruit farm.
Furnished Rooms	L. C. Temps	258 Territorial St.	Apply	Apply		Car from Boat Dock	Block from bath houses.
Urbandale Resort	Mrs. E. Davis	R. D. 3	Apply	Apply	8	Paw Paw Lake Interurban	Block from car line.
Private Residence	Mrs. Malvina Horton	R. D. 3	\$1.00		6	Write for particulars	Children desired.
Private Residence	Mrs. Katie Byrket	206 Wall St.		\$8.00		House of David Car to Sixth	Central location; big yard.
Private Residence	Alice F. Adams	122 Cornelia St.	Apply	Apply	10	Write for particulars	Very pleasant place.
Private Residence	Mrs. Della Harr	661 Buss Ave.	Apply	Apply	4	Write for particulars	Care for children.
Private Residence	Mrs. S. B. Ellsworth	303 High St.		\$2.00-\$5.00		Fair Plain Car to Baptist Ch.	Rooms; in business district.
Private Residence	Mrs. C. B. Krieger	870 Superior St.	\$1.25	\$8.00	15	Fair Plain Car to Empire Av.	Good home cooking.
Private Residence	E. D. Chappell	Britain Ave.		\$7.00	20	Notify owner	Fine board; good fishing.
Private Residence	Mrs. L. A. Shearer	828 Columbus Ave.	\$1.00		6	Fair Plain Car to Clay St.	All outside sleeping rooms.
Private Residence	Mrs. Geo. Chapman	423 Eighth St.	\$1.00			Write for particulars	Excellent cuisine.
House for Rent	H. R. Ellis	P. O. Box 195	Apply	Apply		Write for particulars	3-rm. cottage, 6-rm. house.
Wildwood Resort	M. McDermott	So. Pipestone St.	\$1.50	\$7.00		South Pipestone St. Car	Beautiful grounds.
Furnished Rooms	R. J. Vanderbeck	757 E. Main St.	Apply	Apply		House of David Car	Write for particulars.
Cribbs' Farm	Mrs. Jennie Cribbs	Cor. Britain and Fair		\$9.00		House of David Car	Near Eastman Springs.
Private Residence	Mrs. Frank A. Price	796 Colfax Ave.	Apply	Apply		Michigan St. Car to Clay St.	Pleasant modern home.
Caple Cottages	L. E. Caple	Napier Ave.	Apply	Apply		Fair Plain Car	Excellent table board.
Private Residence	Mrs. E. D. Plummer	560 Plummer Court		\$2-\$3-\$4		Notify proprietor	Pleasant, airy, light rooms.
Cottage Grove Resort	M. D. Price	R. D. 5, Britain Ave.	Apply	Apply		Dowagiac Car to Kennedy's	5 cottages; light, airy rooms.
The Edgecombe	J. H. Edgecombe	Hull and Edwards Ave.		\$8.00-\$10	40	Hull Ave. Car	First class in every respect.
Mizpah Park	John M. Malcomson	Benton Harbor	Apply	Apply		Notify proprietor	Furnished cottages for rent.
Private Residence	A. J. Youngs	409 Washington St.	Apply	Apply		Write for particulars	Good room and board.
Furnished Rooms	George McFaul	406 High St.		\$1.50-\$5.00		Write for particulars	Modern in every respect.
Park Hotel	M. Yampolsky Sons	Britain and Eureka Ave.	Apply	Apply		House of David Car	Ideal Kosher summer resort.
Private Residence	Mrs. Henry Baute	581 Pavone St.		\$2.00-\$2.50		Michigan St. Car	2 desirable furnished rooms.
Private Residence	Mrs. D. B. McClary	250 Lake Ave.		\$7.00-\$8.00		Fair Plain Car	Good room and board.
Private Residence	Mrs. Mamie Denslow	362 High St.	\$1.25	\$7.00	8	Any Benton Harbor Car	Modern; screened porches.
Private Residence	D. J. Cullinane	253 Pleasant St.	Apply	Apply		Write for particulars	Furnished rooms.
Boarding House	Mrs. Lou Miller	245 Territorial St.	\$1.00	\$5.00		Any Benton Harbor Car	Near all the bath houses.
Private Residence	Mrs. Edward Pullen	931 Pearl St.		\$8.00	6	Fair Plain Car to Pearl St.	Rates, parties of y'ng ladies.
Rural Rest Resort	Robert B. Curtis	Benton Harbor	\$1.25	\$7.00	25	South Pipestone Car	Table service very best.
Furnished Rooms	Melvini Heppie	Fair and Highland Ave.	Apply	Apply		House of David Car	Neatly furnished; large lawn.
Private Residence	Mrs. H. M. Vincent	775 Lavette St.	\$1.25	\$8.00		Michigan St. Car to Clay St.	First class accommodations.
Private Residence	Mrs. Joe Boylan	555 Cass St.		\$6.00		House of David Car	Home cooking a specialty.
Private Residence	L. W. Kimball	580 Clay St.	Apply	Apply	10	South Pipestone Car	Write for particulars.
Private Residence	Gust Amundsen	R. D. 2		\$7.00	20	Paw Paw Lake Interurban	No children wanted.
Ivanrest Farm	Mrs. James White	R. D. 3	\$1.25	\$7.00	20	Paw Paw Lake Interurban	Write for particulars.
Furnished Rooms	Mrs. Jno. Schweitzer	631 Pavone St.	Apply	Apply		South Pipestone Car	Modern; good lawn; board.
Private Residence	Mrs. Elva Damon	Kirby and McAllister	Apply	Apply		Write for particulars	12 modern furnished rooms.
Private Residence	Mrs. B. R. Eastman	Fair and Britain Ave.	Apply	Apply	75	House of David Car	Near Eastman Springs.
Longwood Farm	Mrs. W. D. Harper	R. D. 2, Box 140		\$8.00	10	Paw Paw Inter. to Greenfield	Write for particulars.
Granger Farm Resort	Mrs. A. E. Granger	Benton Harbor, Mich.	\$2.00	\$10.00	50	Write for particulars	On banks of Lake Michigan.

GROUP NO. 5.—ST. JOSEPH RIVER RESORTS. Take Graham & Morton Steamers to St. Joseph or Benton Harbor.

River Orchard Farm	J. H. Bartels	R. D. 3, Eau Claire		\$7.00	15	Dowagiac Interurban	Write for particulars.
Rush Fruit Farm	Mrs. W. E. Rush	R. D. 1, Benton Harbor		\$7.00	12	Dowagiac Interurban	Near river; good bathing.
River Farm Resort	George Hanson	Sodus, Mich.	Apply	Apply		Dowagiac Interurban	Good meals; fishing, bathing.
Private Residence	Mrs. J. P. Versaw	King's Landing, Mich.	\$1.50	\$8.00-\$9.00		Dowagiac Interurban	6 miles from Benton Harbor.
Shady Lawn Farm	Maude E. Sharai	Sodus, Mich.	Apply	Apply	35	Dowagiac Interurban	Home cooking; fine bathing.
Ox Bow Spring Farm	J. W. Sharai	Sodus, Mich.	Apply	Apply	40	Dowagiac Interurban	Good board, good fishing.
Lemont Resort	A. J. Lemont, Mgr.	Sodus, Mich.	Apply	Apply	80	Dowagiac Interurban	Good for nervous people.
Mott's Resort	Mrs. Mott Birkholm	R. D. 1, Benton Harbor	Apply	Apply		River Str. or Fair Plain Car	On high bluff on river.
River Brook Farm	H. H. Hogue	Sodus, Mich.		\$8.00-\$10		Dowagiac Interurban	200 acre farm.
Emery Fruit Farm Resort	C. F. Coombs	L. B. 394, Bent. Harbor	Apply	Apply	80	Write for particulars	On the St. Joe River.
Springvale Fruit Farm	Mrs. John Stump	Sodus, Mich.	\$1.50	\$7.00		Dowagiac Interurban	5 miles from Benton Harbor.
Beechwood Camp	Wm. Dovenmuehle	St. Joseph, Mich.	\$1.25-\$1.50	\$7.00-\$8.00		River Str. or So. Mich. Inter.	Good board, boating, etc.
Private Residence	Mrs. Willis Harner	R. D. 1		\$7.00		Write for particulars	3 miles from Benton Harbor.
Farm Home	Mrs. John Anthony	R. D. 1, Sodus, Mich.	Apply	Apply	4	Write for particulars	Children from 6 to 12 yrs.
Ox Bow Spring Farm	J. W. Sharai	Sodus, Mich.	Apply	Apply	40	Dowagiac Interurban	Good board and fishing.
Fruit Farm	Mrs. F. M. Howard	Sodus, Mich.	Apply	Apply	2	Write for particulars	Motherless children.
Millwood Resort	Mrs. Robt. C. Evans	R. D. 3, Eau Claire	\$1.25	\$8.00		Dowagiac Inter. to Evans	Beautiful scenery.
Cook's Resort	Mrs. B. L. Cook	Box 333, Eau Claire	\$1.00		12	Interurban and Big Four	Near Indian Lake.
Oak Hill Farm	Mrs. E. C. Weaver	Eau Claire, Mich.		\$7.00	40	Interurban to Eau Claire	Chicken every day.
The Chestnuts	Mrs. E. D. Green	Eau Claire, Mich.		\$6.00		Dowagiac Interurban	Write for particulars.
Ashland Grove Farm	Sovereign P. Versaw	R. D. 3, Eau Claire	\$1.25	\$5.00-\$7.00		Will meet at Eau Claire	Good home cooking.
Groveland Farm	Mrs. L. Hochberger	Eau Claire, Mich.		\$7.00		Dowagiac Interurban	Good home cooking.
Country Home	Mrs. A. A. LaPlant	R. D. 1, Eau Claire	\$1.00	\$6.00	5	Write for particulars	Near Black Lake.

GROUP NO. 6.—BERRIEN SPRINGS RESORTS. Take Graham & Morton Steamers to St. Joseph or Benton Harbor.

Country Home	Mr. Harry Easton	R. D. 1, Berrien Centre	\$1.00	\$6.00	8	Dowagiac Inter. to Little's	Write for particulars.
Fairfield Farm Resort	Erastus Murphy	Berrien Centre, Mich.	Apply	Apply	20	Big Four, Benton Harbor	Write for particulars.
Country Home	Mrs. S. B. Parker	R. D. 2, Berrien Centre		\$6.00	4	So. Mich. Inter. to Stop 18	Very quiet; home cooking.
Farm Home	Mrs. L. B. Harrington	R. D. 2, Berrien Centre	\$1.00		6	Write for particulars	2½ mi. from Berrien Sp'gs.
Country Home	Mrs. J. DeLong	R. D. 2, Berrien Centre		\$7.00	10	Write for particulars	Near Little Indian Lake.
Farm Home	Mrs. Ada Miers	Berrien Centre, Mich.	Apply	Apply	6	Interurban to Berrien Springs	Middle aged people preferred.
Country Home	Mrs. J. W. Tarbell	R. D. 3, Berrien Springs		\$7.00		So. Michigan Interurban	On bank of St. Joe River.
Maple Bluff	Mrs. John Balfour	Bluff St., Berrien Spgs.	\$1.50	\$6.00	12	So. Michigan Interurban	On bank of St. Joe River.

All Ships for St. Joseph and Benton Harbor land at the Central Dock, midway between the two cities.

GROUP NO. 6—Continued.

Name of Hotel, Resort or Residence	Name of Proprietor	Postoffice Address	Rates		Accommodations	How Reached from G. & M. Docks	Features of Location and Remarks
			Day	Week			
Private Residence	Jas. M. Harper	R. D. 3, Berrien Springs		\$6.00	---	So. Michigan Interurban	Home cooking; fresh fruit.
Maple Lawn Residence	Mrs. A. T. Kiger	R. D. 3, Berrien Springs	\$1.50	\$7.00	---	So. Michigan Interurban	On bank of Lake Chapin.
Shady Hill Fruit Farm	Mrs. J. C. Feather	R. D. 2, Berrien Springs	Apply	Apply	---	So. Michigan Interurban	4½ mi. from Berrien Springs.
Private Residence	Mrs. Ona Feather	Box 253, Berrien Springs	\$1.25	\$6.00-\$7.00	6	So. Michigan Interurban	Near river and Lake Chapin.
Country Home	Mrs. L. S. Brown	R. D. 3, Berrien Springs	Apply	Apply	---	So. Michigan Interurban	Mother's care for children.
Private Residence	Mrs. L. E. McCullough	Berrien Springs	\$1.25	\$7.00	12	So. Michigan Interurban	Write for particulars.
Urick's Summer Home	Mrs. D. G. Urick	Berrien Springs	\$1.00	\$6.00	20	So. Michigan Interurban	2 miles from Berrien Springs.
Furnished 4-Room House	Mrs. R. Bell	Berrien Springs		\$5.00	---	So. Michigan Interurban	Write for particulars.
Hotel Berrien	Mrs. Maud Pennell	Berrien Springs	\$2.00	\$7.00-\$9.00	50	So. Michigan Interurban	Modern; on Lake Chapin.
Lake View Resort	Vincent A. Rice	Berrien Springs	\$1.50	\$7.00-\$8.00	35	So. Michigan Interurban	Lake Chapin, fishing, tennis.
Locust Cottage	N. Laeth	Berrien Springs	\$1.50	\$7.00-\$8.00	15	So. Michigan Interurban	Near Ber. Spgs. and lake.
Private Residence	Mrs. Esther Slight	Box 208, Berrien Springs	\$0.75	\$7.00	4-6	So. Michigan Interurban	One block from river.
Quiet Country Home	Mrs. R. H. Toney	Berrien Centre, Mich.	\$1.25	Apply	10	So. Michigan Interurban	Write for particulars.
The Frontenac	M. Bohleber	R. D. 3, Berrien Springs	Apply	Apply	20	So. Michigan Interurban	On Lake Chapin.
Private Residence	E. E. Nye	R. D. 3, Berrien Springs	\$1.25	\$6.00	---	So. Michigan Interurban	Men preferred.
Rose Lawn	Mrs. T. C. Benson	Berrien Springs	\$1.00	\$6.00	20	So. Michigan Interurban	Lake and river near by.
Health Camp	Mrs. Flora C. McKeand	R. D. 1, Berrien Springs		\$5.00 up	---	So. Michigan Interurban	Write for particulars.
Private Residence	Mrs. Fillmore	Berrien Springs	\$1.25	\$6.00	6-8	So. Michigan Interurban	Near river and Lake Chapin.
Private Residence	Mrs. Geo. Halbach	R. D. 3, Berrien Springs		\$6.00	12	So. Michigan Interurban	On Lake Chapin.
Farm Resort	Mrs. John Lord	Berrien Springs	Apply	Apply	---	Write for particulars	Modern home; good meals.
Private Residence	Mrs. D. S. Helm	Berrien Springs		\$4.00	6	So. Michigan Interurban	Children preferred; write.

GROUP NO. 7.—PAW PAW LAKE AND VICINITY. Take Graham & Morton Steamers to St. Joseph or Benton Harbor.

Buzzard's Roost	Miss A. G. Ackerman	R. D. 3, Coloma, Mich.	\$1.50	\$7.00	50	Paw Paw Lake Interurban	Fine bathing, home cooking.
The Colonial	A. Driver	Coloma, Mich.	\$1.50-\$2.00	\$8.00-\$10	75	Paw Paw Lake Interurban	Fine shade, lawn, bathing.
Beechwood Hotel	J. V. Rembow	Watervliet, Mich.	Apply	Apply	150	Paw Paw Lake Interurban	On Edge of Paw Paw Lake.
Quiet Country Home	Mrs. M. M. Runyow	R. D. 3, Coloma, Mich.		\$9.00-\$10	---	Paw Paw Lake Interurban	Write for particulars.
The Maplewood Hotel	Mrs. R. Goldstein	Coloma, Mich.	Apply	Apply	---	Paw Paw Lake Interurban	Excellent table board.
Locust Hollow Farm	Mrs. A. P. Guy	R. D. 2, Coloma, Mich.		\$7.00	5	Coloma Inter. to Weber's	Excellent place for rest.
The Hyde Park Cottages	Sidney Schram	Coloma, Mich.		\$8.00	---	Paw Paw Lake Interurban	Bathing fishing; free boats.
Coburn House	M. Coburn	Watervliet, Mich.	Apply	Apply	80	Interurban to Watervliet	Write for particulars.
Naomi Resort	L. Ormsby	Watervliet, Mich.	\$1.50	\$8.00-\$10	---	Paw Paw Lake Interurban	On north shore of P.P. Lake.
Pleasant Farm Home	Mrs. E. J. Vrooman	R. D. 1, Watervliet	Apply	Apply	---	Paw Paw Lake Interurban	Near lake.
Tippecanoe Resort	Richard Peterson	Coloma, Mich.	\$1.50	\$8.00-\$10	---	Paw Paw Lake Interurban	Good boating, bathing, etc.
Brookside Farm Resort	Mrs. Ida Dedrick	R. D. 1, Coloma, Mich.	\$1.50	\$8.00-\$10	---	Paw Paw Lake Interurban	Ideal place for an outing.
Cottage for Rent	Geo. DePeyster	Coloma, Mich.	Apply	Apply	---	Paw Paw Lake Interurban	Elec. light, laundry, boat.
Locust Beach	C. L. Newton	Coloma, Mich.	Apply	Apply	40	Interurban to Lake Shore Sta.	Write for particulars.
Genoar's Resort	Mrs. G. J. Genoar	Coloma, Mich.	Apply	Apply	40	Interurban to Douglas View	Near all amusements.
Douglas View Resort	Dr. P. E. Douglas	Coloma, Mich.	\$1.75	\$10.00	---	Interurban to Douglas View	One of the best on the lake.
Paw Paw Valley Resort	Anton Thar	R. D. 3, Coloma, Mich.		\$8.00	15	Will meet at Riverside	Near Catholic Ch.; dancing.
Knapp's Resort	Edward Knapp	Box 274, Coloma, Mich.	Apply	Apply	20	Paw Paw Lake Interurban	Everything you want.
Hartfield	Mrs. L. DeFields	Coloma, Mich.	\$1.00		10	Paw Paw Lake Interurban	½ mi. from lake; good meals.
Private Residence	Mrs. M. A. Dunning	Box 203, Coloma, Mich.	Apply	Apply	2	Paw Paw Lake Interurban	Elderly people preferred.
The Foynes Hotel	M. T. Dowling	Coloma, Mich.	Apply	Apply	---	Interurban to Ellinee Sta.	Prettiest place on lake.
The Wabana	Mrs. S. Ravencamp	Watervliet, Mich.	\$2.00	\$8.00-\$10	---	Paw Paw Lake Interurban	Bathing, boating.
The Ellinee Social Center	E. H. Erickson	Coloma, Mich.			---	Interurban to Ellinee Sta.	No boarders; all amusem'ts.
The Florence	E. Hennessy	Coloma, Mich.	\$1.50	\$7.00-\$9.00	100	Paw Paw Lake Interurban	Home cooking; boats free.
Island Park Hotel	G. Olander	Coloma, Mich.	\$1.50	\$7.00 up	---	Interurban to Will-o-Paw Sta.	Free use of boats.
May-Bell Hotel	Mrs. J. A. Fleming	Paw Paw Lake, Mich.	Apply	Apply	---	Interurban to Lake Point	On bluff; fine beach.
Woodlawn Resort	Mrs. M. W. Surman	Box 108, Watervliet	\$1.50	\$8.00	40	Watervliet Int., Wigwam Rd.	Write for particulars.
DuVall Cottage	Mrs. A. C. DuVall	Coloma, Mich.	Apply	Apply	---	Paw Paw Lake Interurban	Modern; home cooking.
The Pitcher House	D. W. Mott	Coloma, Mich.		\$10.00 up	40	Paw Paw Lake Interurban	First class hotel in Coloma.
Cottage Hill Farm	C. Vogt	Coloma, Mich.	Apply	Apply	---	Will meet at Coloma	Require references; write.
The Ravine	Jennie Mayer	Coloma, Mich.		\$9.00-\$12	100	Paw Paw Lake Interurban	Home cook'g; mineral water.
Furnished Cottages	Miss B. O. Mayer	Paw Paw Lake, Mich.	From	\$75 up	---	Paw Paw Lake Interurban	Write for particulars.
Lincoln Cabin Inn	E. E. Rowland	Watervliet, Mich.	\$1.50	\$7.00-\$10	80	Bus Line from Watervliet	Paw Paw Lake, front door.
North Park Resort	Alfred Norden	Coloma, Mich.	\$2.00	\$9.00-\$10	70	Paw Paw Lake Interurban	North side of lake.
Woodward's Hotel	O. W. Woodward	Coloma, Mich.	\$2.00-\$2.50	\$8.00-\$14	200	Interurban to Pleasant View	Complete amusements.
The Alice Hotel	Alfred Martin	Box 337, Watervliet	\$1.50	\$8.00-\$9.00	75	P. M. or Paw Paw Lk. Inter.	Best bathing beach on lake.
Private Residence	Mrs. W. J. Adams	Coloma, Mich.	\$1.00	\$6.00	---	Paw Paw Lake Interurban	Will meet guests at Coloma.
Farm Home	Mrs. E. A. Yates	Watervliet, Mich.	Apply	Apply	12	Interurban or P. M.	Mile from lake; nice lawn.
Private Residence	Jno. Nichols	Box 33, Coloma, Mich.		\$8.00	6	Paw Paw Lake Interurban	Elderly people preferred.
Lee's Summer Home Res't	J. W. Lee	Coloma, Mich.	\$1.50-\$2.00	\$8.00-\$12	75	Interurban to Strong's Sta.	Boating, fishing, dancing.
The New London Zimmer	Mrs. L. Zimmer	Coloma, Mich.	\$1.25-\$1.50	\$7.00-\$9.00	50	Interurban to Will-o-Paw Sta.	A new home-like resort.
Whip-Poor-Will Hotel	Robert Storick	Coloma, Mich.	\$1.50	\$8.00	50	Inter. to Little P. P. Lake	Boating, bathing, etc.
Hudson Cottage	Mrs. Collins Hudson	R. D. 1, Coloma, Mich.	\$1.50	\$8.00	20	Inter. to Little P. P. Lake	Bathing, fishing; free boats.
Lakeside Cottages Resort	Mrs. O. Hansen	Coloma, Mich.	Apply	Apply	---	Paw Paw Lake Interurban	Free boats; excellent beach.
Adelphia Beach Resort	W. A. Peterson	R. D. 1, Coloma, Mich.	Apply	Apply	---	Inter. to No. Terminal Sta.	Bathing, boating, tennis, etc.
Private Boarding House	Mrs. W. A. Willis	Coloma, Mich.	\$1.00	\$6.00	---	Paw Paw Lake Interurban	Well shaded lawn, near lake.
Cottage for Rent	Mrs. Laura C. Gould	9010 S. Hoyne, Chicago	Apply	Apply	---	Paw Paw Lake Interurban	Write for particulars.
North Side Inn	Mrs. Lillie Palmantur	Box 227, Watervliet	Apply	\$7.00-\$8.00	20	Write for particulars.	Mile from Interurban.
Farm Home	Mrs. A. W. Clymer	Watervliet, Mich.		\$5.00-\$6.00	---	P. M. or Inter. Will meet	Near lake; fine board.
The Chicago	Mrs. L. Conyers	Watervliet, Mich.	Apply	Apply	---	P. M. or Interurban	Large rooms, good meals.
Millcreek Farm	Mrs. Ira L. King	Watervliet, Mich.		\$6.00	10	Inter. to Millburg; will meet	Well supplied table; shade.

GROUP NO. 8.—FARM AND SCATTERED RESORTS. Take G. & M. Steamers to St. Joseph, Benton Harbor or Holland.

Private Home	Mrs. E. A. Drake	Highland Park, Mich.	Apply	Apply	---	Write for particulars	Also cottages to rent.
Private Home	Angeline E. Kingston	Bangor, Mich.	\$1.50	\$5.00-\$7.00	10	Write for particulars	Teachers or professional.
"Twinaere"	Mrs. L. B. Nicholson	Bangor, Mich.	Apply	Apply	3	P. M. Railroad	Cool and restful.
Bressler's Fruit Farm	M. Bressler	Bangor, Mich.		\$8.00	50	P. M. to Bangor	Bathing and fishing.
Silver Brook Farm	Mrs. Riley Wilson	R. D. 2, Bangor, Mich.	\$1.00	\$5.00	10	Write for particulars	Boarders do own room work.
Private Home	Mrs. E. J. Dahms	R. D. 4, Hartford	\$1.50	\$7.00	10	P. M. to Hartford	Near bathing beach.

All Ships for St. Joseph and Benton Harbor land at the Central Dock, midway between the two cities.

GROUP NO. 8—Continued.

Name of Hotel, Resort or Residence	Name of Proprietor	Postoffice Address	Rates		Accommodate	How Reached from G. & M. Docks	Features of Location and Remarks
			Day	Week			
Private Home	Mrs. W. H. Goss	Bangor, Mich.		\$8.00	15	Write for particulars	Shady lawn; home cooking.
Pleasant Home	Mrs. Charles Morgan	Bangor, Mich.	\$1.00	\$7.00	12	P. M. to Bangor	Write for particulars.
Private Home	Mrs. H. H. Carr	R. D. 4, Bangor, Mich.	\$1.50	\$7.00	6	P. M. to Bangor; will meet	Good place to rest.
Summer Cottages	Curtis Drake	Bangor, Mich.		\$10.00		P. M. to Hartford	On Van Auken Lake; fishing.
Pinehurst	Mrs. E. E. Ferguson	Bangor, Mich.		\$7.00		Take P. M. from St. Joe	Fine lawn, good cooking.
Hickory Grove Farm	Mrs. Richard Leedy	R. D. 5, Bangor, Mich.	\$1.00	\$6.00		Write for particulars	Conveyance furnished free.
Country Home	A. A. Disbrow	Bangor, Mich.	\$1.00	\$6.00	14	P. M. from McDonald	Near Van Auken Lake; meet.
Suburban Home	Mrs. J. D. Ferguson	Bangor, Mich.		\$6.00-\$7.00	10	P. M. from St. Joe	Choice home comforts.
Shady Lawn Farm	The Misses Beyrer	R. D. 3, Niles, Mich.	Apply	Apply		So. Michigan Interurban	Restful place, St. Joe River.
Summer Home	Mrs. Hattie Pierce	R. D., Hartford	\$1.00	\$5.00	5	P. M. to Hartford	Farmer's table.
Norwood Farm	L. Kemp & Son	R. D. 1, Hartford	\$1.25	\$8.00		P. M. to Hartford; will meet	On bank of Rush Lake.
Marquette Hotel	W. J. Evans	Hartford, Mich.	\$1.50	\$10.00		P. M. to Hartford	New and clean; home cook'g.
New Riverview Hotel	Showers & Ostland	Allegan, Mich.	\$1.50	Special		P. M. Holland to Allegan	Splendid location, all adv'g's.
Maple Lawn	Mrs. Mary Lammon	R. D. 4, Hartford	Apply	Apply		P. M. to Hartford	Write for particulars.
Maple Knoll Farm	B. H. Cook	R. D. 1, Hartford	Apply	Apply	12	P. M. to Hartford; will meet	Rush and Van Auken Lakes.
Quiet Country Place	L. B. Thornton	R. D. 1, Hartford	\$1.25	\$7.00	4	P. M. or Inter. to Watervliet	Write for particulars.
Wild Garden Resort	Mrs. W. D. Groner	R. D. 4, Hartford	\$1.25	\$8.00	12	P. M. to Hartford; will meet	Write for particulars.
Farm house for rent	M. W. Hyenga	Hartford, Mich.	Apply	Apply		Write for particulars	Furn. for light housekeeping.
Country Home	Mrs. Maud Born	R. D. 4, Hartford	\$1.00		5	Write for particulars	Children preferred.
Shady Lane Resort	Wm. B. Kirby	R. D. 2, Fennville, Mich.	\$1.50	\$8.00	16	Saugatuck Inter.; will meet	Located near the lake.
Fruit Farm	Mrs. Paul Gebhardt	R. D. 2, Fennville, Mich.		\$6.00-\$8.00		Write for particulars	Near lake and river.
Lone Beach Resort	Mrs. E. E. Plummer	Fennville, Mich.		\$8.00		Write for particulars	Modern; near Lake Michigan.
Evergreen Fruit Farm	E. E. Angsburg	R. D. 1, Fennville	Apply	Apply		P. M. from Holland	Write for particulars.
Maplehurst	Mrs. R. H. Reid	R. D. 2, Fennville		\$8.00-\$12		Auto from Saugatuck	Cool, shady, restful.
Swiss Cottage Resort	Chas. Guigue	R. D. 2, Bravvo, Mich.		\$7.00	25	Write for directions	Two blocks from Lake Mich.
Lake View Farm	Mrs. C. J. Mueller	Box 18, Breedsville	\$1.00	\$6.00	12	Write for particulars	Near inland lake.
Elms Resort	Mrs. E. C. McNett	Breedsville, Mich.		\$8.00	10	P. M. from Chicago	Good fishing and bathing.
Country Home	Mrs. B. L. Banta	R. D. 1, Breedsville	\$1.25	\$7.00	14	Write for instructions	Close to fine bathing beach.
Private Home	Miss Geo. Phiscator	Buchanan, Mich.	Apply	Apply		Write for particulars	Large grove and small lake.
The Eureka Resort	Mrs. Ward Close	New Richmond, Mich.	\$1.00	\$6.00		P. M. to New Richmond	On Kalamazoo River.
Country Home	Mrs. Frank Penwell	Glendora, Mich.		\$5.00	6	Mich. Central from St. Joe	Write for particulars.
Quiet Hill	Mrs. Eugene Boyce	Box 14, Glendora, Mich.	\$1.00	\$6.00		Mich. Central to Glendora	Restful place; fresh fruit.
Farm Home	Lewis Paul	Glendora, Mich.	\$1.00		10	Mich. Central to Glendora	Good fishing.
Lake View Park	O. M. Pratt	Riverside, Mich.	\$1.50-\$2.00	\$8.00-\$12		P. M. from St. Joseph	Dancing, tennis, croquet.
Farm Home	Julia Alkire	R. D. 1, Bridgman	\$1.50	\$8.00-\$10	4	P. M. from St. Joseph	Home cooking, fresh fruit.
Farm Home, modern	Mrs. Stella M. Clark	Bridgman, Mich.	Apply	Apply		P. M. from St. Joseph	Fine bathing beach.
Berry's Fruit Farm Rest	Mrs. Berry	Glenn, Mich.		\$8.00 up	50	Boat or Train to So. Haven	10 mi. north of So. Haven.
Allegan, Mich., R. D. 6	E. L. Douglas	6422 Stonelyland, Ch'go		\$8.00 up	30	P. M. to Allegan	Pamphlet on request.
Hotel Richmond	Mrs. Chas. Dailey	New Richmond, Mich.	\$1.00	\$6.00	18	P. M. or Boat; meet all trains	New building; good board.
Farm Home	Mrs. Alvah Canfield	R. D. 1, Buchanan	Apply	Apply		Write for instructions	Chicken, fresh milk, etc.
Country Home	Mrs. A. J. Beatz	Kibbie, Mich.	\$1.00	\$5.00	10	Write for particulars	Black River through place.
Saddle Lake Lodge	Z. G. Cease	Grand Junction, Mich.	\$1.50	\$8.00	30	Write for instructions	Home cooking; bathing, etc.
Private Home	Mrs. Eugene Smith	R. D. 2, South Haven		\$7.00		Write for particulars	Near Lake Michigan.
Country Home	F. H. Wooley	Grand Junction, Mich.	\$1.25	\$7.00	5	Write for instructions	Quiet, pleasant home; lakes.
Country Home	Miss Mable Johnson	R. D. 2, Paw Paw		\$7.00		Write for particulars	Beautiful, high location.
Country Home	Mrs. Jos. Passage	R. D. 2, Bloomingdale	\$1.00		6	Write for particulars	Men preferred; good fishing.
Private Home	Mrs. Aug. Glossenger	New Buffalo, Mich.	Apply	Apply		Write for particulars	Large room, light housek'g.
Otia Lake Hotel	Mrs. M. Gilmett	Otia, Mich.	Apply	Apply	20	Write for particulars	New and clean; good board.
Country Home	Mrs. H. A. Scott	Stevensville, Mich.	\$1.50	\$6.00	15	P. M. from St. Joseph	Write for particulars.
Riverside Park Resort	Mrs. Jas. H. Moshier	Riverside, Mich.	\$1.50	\$7.00		P. M. to Riverside	Near Lake Mich., P. P. River.
Calayhurst	Alfred M. Calay	Riverside, Mich.	\$1.50	\$8.00	150	Will meet at Riverside	Family cottages and hotel.
Pottawatomie Park	J. J. Barnes	Riverside, Mich.	\$1.50	\$8.00	120	P. M. to Riverside	Cottages; good board.
Eastland Resort	Mrs. W. S. Purcey	Fennville, Mich.	\$1.50	\$8.00-\$10	75	4 mi. south Saugatuck; notify	Ideal place for the family.
Pottawatomie Resort	M. Lurie	R. D. 3, Coloma, Mich.	Apply	\$9.00	30	P. M. to Riverside; bus	Jewish Kosher Resort.
Cottage for Rent	Mildred Smith	Hartford, Mich.	Apply	Apply		Paw Paw Lake Interurban	Six rooms, completely furn.

GROUP NO. 9.—DEWEY, SISTER AND INDIAN LAKE RESORTS. Take Graham & Morton Steamers to Benton Harbor.

Cottages for Rent	Henry Herr	Benton Harbor, Mich.	Apply	Apply	12	Write for instructions	Everything furnished; on lk.
Farm House	Frank D. Pitcher	Sister Lakes, Mich.		\$8.00		Write for particulars	Good beach; free boats.
Camping Grounds	F. D. Pitcher	Sister Lakes, Mich.	\$1.50 per tent			Write for particulars	Good fishing, boating, etc.
Oak Wood Farm	Claude Hughes	Sister Lakes, Mich.		\$7.00		Auto line from Benton Harbor	¾ mile from lake.
Shaul's Villa	Mary R. Shaul	R. D. 7, Dowagiac		\$10.00	75	Inter. from B. H. to Lake	North shore of Indian Lake.
Country Home	Mrs. Minnie Bielby	R. D. 8, Dowagiac		\$8.00	6	Interurban to Indian Lake	One mile from Indian Lake.
Country Home	J. A. Barlow	Eau Claire, Mich.		\$7.00		Interurban to Tuttle's Cross	Near Indian Lake.
Lake Side Farm	Charles Redding	R. D. 1, Dowagiac		\$8.00-\$12		Dowagiac Interurban	Bet. Dewey and Cable Lakes.
Sandy Beach Resort	F. E. Tarrant	1232 Van Buren, Chicago	\$2.00	\$10.00 up		Inter. from Benton Harbor	Dewey Lake; all amusem'ts.
Dewey Lake Fruit Farm	Bert Moore	R. D. 1, Dowagiac		\$8.00		Interurban to Indian Lake	Bank of lake; auto service.
Lake View Farm	Edward Wiest	R. D. 1, Dowagiac	\$1.50	\$8.00 up	15	Dowagiac Interurban	On Dewey Lake; boats free.
Wilson's Resort	Mrs. L. Wilston	R. D. 1, Dowagiac		\$8.00		Dowagiac Interurban	Dewey Lake; good bathing.
Cushing Farm	D. T. Cushing	Dowagiac, Mich.	\$1.50	\$7.00		Dowagiac Inter.; will meet	Shade and fresh vegetables.

GROUP NO. 10.—HOLLAND AND VICINITY. Take Graham & Morton Steamers to Holland.

Ottawa Beach Hotel	J. Boyd Pantland	Ottawa Beach, Mich.	Apply	Apply	1000	Ferry Boat	Finest hotel accommodat'ns.
Hotel Macatawa	S. A. Miller	Macatawa Park, Mich.	Apply	Apply	300	Ferry Boat	None better.
Grand Hotel	Mrs. J. F. Hurlburt	Macatawa Park, Mich.	Apply	\$12-\$18	120	Walking distance from docks	Fine bathing beach.
Bay View Hotel	Mrs. S. A. Leatto	Macatawa Park, Mich.	Apply	\$10-\$15	100	Walking distance from docks	Home cooking.
European Hotel	S. A. Miller	Macatawa Park, Mich.	Europe an Plan		50	Ferry Boat	Built out on the water.
Hotel Holland	Mrs. Geo. Pardee	Holland, Mich.	\$1.00 up			Walking distance	Modern, European.
The Pines	Mrs. J. R. Wiggers	R. D. 1, Holland	\$2.00	\$11.00 up	40	Write for particulars	Jenison Park on Black Lake.

All Ships for St. Joseph and Benton Harbor land at the Central Dock, midway between the two cities.

GROUP NO. 10—Continued.

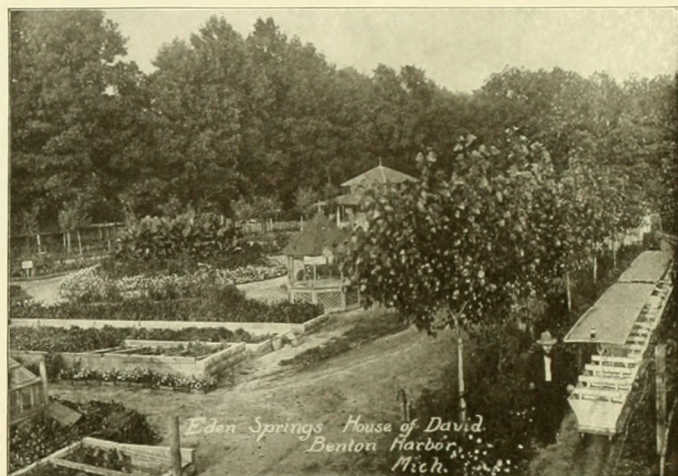
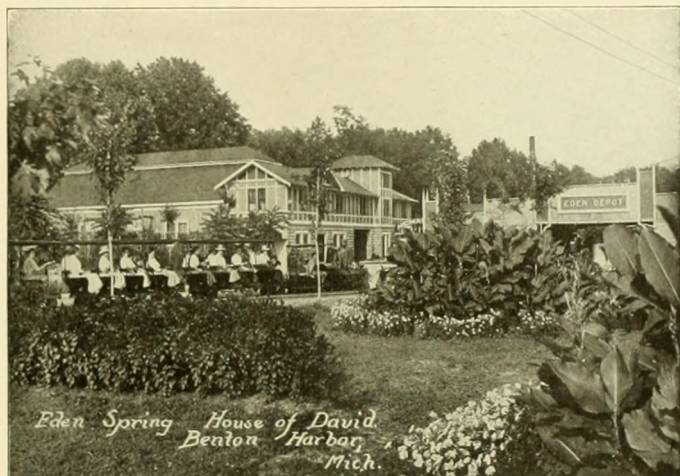
Name of Hotel, Resort or Residence	Name of Proprietor	Postoffice Address	Rates		Accommodate	How Reached from G. & M. Docks	Features of Location and Remarks
			Day	Week			
The Castle	J. H. Parr	Castle Park, Mich.	\$2.50	\$10.00	100	Car from Jenison Park	Write for particulars.
The Lodge	Dr. H. B. Baker	R. D. 12, Holland	Apply	Apply	20	Write for particulars	Cottages to rent.
The Lodge: Cottages	Henry B. Baker	R. D. 12, Holland	Apply	Apply	300	Write for particulars	Brookwood Beach, L. Mich.
Waukazoo Inn	John C. Everett	8 So. Dearborn, Chicago	Apply	Apply	300	Ferry Boat	Raise own garden truck.
High View Park	Albert Berg	1116 Barry Av., Chicago	Apply	Apply	30	Ferry Boat	40 acres wooded, Black Lake.
Lakeside Inn	J. E. Goid	R. D. 1, Holland, Mich.	\$2.00	\$10-\$12	100	Write for particulars	Located on Macatawa Bay.
Camp Jeannette	J. Doornhein	R. D. 11, Holland, Mich.	\$2.00	\$10.00	40	Phone Midway 6934, Chicago	Yachting on Macatawa Bay.
The Marshall	Mrs. E. G. Marshall	R. D. 1, Holland, Mich.	Apply	Apply	40	Write for particulars	Beautifully located on Bay.
Private Residence	Mrs. H. Fortine	R. D. 1, Holland, Mich.	Apply	Apply	40	One block from car line	Write for particulars.
Private Home	Mrs. A. Beckman	95 E. 9th St., Holland	Apply	\$8.00-\$12	40	Interurban from Holland	Mile from Macatawa Beach.
Cedar Lawn Fruit Farm	C. M. Bernard	R. D. 12, Holland, Mich.	\$1.00	\$6.00	12	Boat or inter. to Gibson Cross	Write for particulars.
Hill View Farm	Geo. A. McAllister	R. D. 12, Holland, Mich.	\$1.00	\$6.00	15	Boat or Inter. to Gibson Cross	Write for particulars.
Private Home	Mrs. C. C. Wheelen	236 Columbia, Holland	Apply	Apply	---	Write for particulars	Large rooms; good board.
Furnished Rooms	A. D. Goodrich	75 E. 9th St., Holland	Apply	Apply	---	Street Car to College Ave.	Modern conveniences.
"B" Line Farm Resort	M. H. Younkers	R. D. 12, Holland, Mich.	Apply	\$7.00	---	Saugatuck Inter. to B. Line	Write for particulars.
The Park Hotel	Mrs. E. J. Stoddart	1 W. 10th St., Holland	---	---	---	---	---
Farm Home	Clara Ahlgren	R. D. 12, Holland, Mich.	\$1.00	\$7.00	6	Write for particulars	Located at Gibson Crossing.
Grand View Inn	Paul Thiemann	Jenison Park, Holland	\$1.50	\$8.00 up	40	Write for particulars	On Black Lake.
Beach House	E. Frodin	Holland, Mich.	\$2.00	\$9.00-\$12	75	Electric Car to Virginia Park	Bathing, boating, fishing.
Furnished 8-room Cottage	George Groener	R. D. 11, Holland, Mich.	Apply	Apply	---	Ferry to Oak Lawn Park	Bathing, boating, fishing.
Country Home	Josephine Robinson	R. D. 6, Holland, Mich.	Apply	Apply	20	Livery Rig from Holland	Good board; quiet, restful.
Furnished Cottages	Mrs. E. C. Westervelt	Macatawa, Mich.	Apply	Apply	---	Write for particulars	Best location, Macatawa Pk.
Cottage for Rent, 7-room	U. Devries	R. D. 1, Holland, Mich.	Apply	Apply	---	Write for particulars	200 ft. from Macatawa Bay.
Furnished Rooms	Mrs. Peter McCarthy	Jenison Park, Holland	Apply	Apply	---	Cars pass the house	Block from G. & M. Dock.
Private Residence	M. Barendse	Edgewater, Holland	---	\$10.00 up	8	Take Ferry to Edgewater	Located on Black Lake.
Private Home	Mrs. John Zeerip	264 W. 14th St., Holland	\$1.50	\$7.00	3-4	Four blocks from Docks	Home cooking; fine lawn.
Private Home	Mrs. A. Van Zoesen	R. D. 12, Holland, Mich.	\$1.00	---	2	Holland Interurban	Mile from Central Park.
Private Residence	The Misses Te Roller	79 E. 10th St., Holland	Apply	Apply	---	Write for particulars	Fine location; modern.
Private Home	Mrs. John Stegeman	R. D. 10, Holland, Mich.	\$1.00	---	10	Write for particulars	3 miles east of Holland.
Furnished Bungalows	John De Boer	Lakeside Hts., Holland	Apply	Apply	---	Write for particulars	200 feet from lake front.
Private Residence	Mrs. O. D. Bottume	129 E. 10th St., Holland	---	\$5.00-\$7.00	10	Car line to Macatawa Park	Light airy rooms, large lawn.
Furnished Cottages	Mrs. A. E. McClellan	169 E. 5th St., Holland	---	season	---	Interurban or Ferry	4 beds each; 9-foot porches.
The Park Hotel	Mrs. E. J. Stoddart	Holland, Mich.	---	\$2.00 up	---	Write for particulars	European plan; modern.
Furnished Cottages	Mrs. E. A. Drake	R. D. 1, Holland, Mich.	Apply	Apply	---	Lake Inter. to Saunders Ave.	From three to ten rooms.
Private Residence	Mrs. E. A. Drake	R. D. 1, Holland, Mich.	\$1.50	\$8.00	4	Lake Inter. to Saunders Ave.	Good old-fashioned cooking.

GROUP NO. 11.—SAUGATUCK AND DOUGLAS RESORTS. Take Graham & Morton Steamers to Holland.

Tourists' Home	W. H. Allen	Saugatuck, Mich.	\$2.00	\$12.00	75	Cars stop at door	Bank of Kalamazoo River.
Allabee Lodge	Miss R. d'A. Ruel	Saugatuck, Mich.	Apply	Apply	---	Interurban from Holland	Furnished cottages for rent.
Forward Movem't Hotel	Horace S. Dugan	Saugatuck, Mich.	---	\$7.00 up	300	Write for particulars	Separate cottages or tents.
The Wenonah	Geo. N. Hames	Saugatuck, Mich.	\$2.00	\$10-\$14	40	Six blocks from Inter. Sta.	Overlook Kalamazoo Lake.
White House	Mrs. Weible Lown	Saugatuck, Mich.	Apply	Apply	30	Write for particulars	Select summer home.
Rosemont Resort	Mrs. Willis Bryan	Douglas, Mich.	\$2.00	\$10-\$12	30	From Saugatuck by auto	Fine beach; other amusem'ts.
Idylse	Mrs. J. B. Campbell	Douglas, Mich.	Apply	Apply	35	Write for particulars	Lks. Mich. and Kalamazoo.
Slumber Bluff Resort	Mrs. S. M. Dailey	Box 295, Saugatuck	Apply	Apply	---	Interurban to Saugatuck	On Kalamazoo River.
Oak Grove	Gebhardt J. Johnson	R. D. 1, E. Saugatuck	---	\$8.00	30	Write for particulars	Fresh farm products.
Summer Home	Mrs. R. T. Rogers	Saugatuck, Mich.	---	\$8.00 up	30	Interurban to Saugatuck	Home cooking; modern.
Wade Cot. Summer Rest	B. M. Wade	Saugatuck, Mich.	\$2.00	---	75	Interurban to Saugatuck	Friendship, comfort, pleasure.
Hillside Home	Mrs. P. H. Hancock	431 Mich. St., Saugatuck	---	\$8.00-\$10	12	Inter. to Hoffman's Corners	Write for particulars.
Hotel Butler	W. G. Phelps	Saugatuck, Mich.	\$2.00	---	150	Interurban from Holland	Modern; at water's edge.
Shady Hill Resort	Mrs. Rose Thiur	Saugatuck, Mich.	Apply	Apply	---	Car to Hoffman St.	Write for particulars.
Private Residence	Mrs. M. Van Leeuwen	R. D. 1, E. Saugatuck	Apply	Apply	---	Write for particulars	Near Kalamazoo River; lake.
Rose Mont	Mrs. Willis Bryan	Douglas, Mich.	---	\$10.00	30	Write for particulars	On bank of Lake Michigan.
Elinwood	Mrs. W. B. Smalley	Saugatuck, Mich.	Apply	Apply	40	Saugatuck Cars	Modern conveniences.
Apple Grove Farm Resort	Mrs. Samuel Drought	Douglas, Mich.	Apply	Apply	---	Interurban to Saugatuck	Fishing, boating, etc.
Cottages for Rent	Mrs. H. Holt	Saugatuck, Mich.	Apply	Apply	---	Write for particulars	Modern; shade, fine lawn.
Murray Hill Sum'r Rest	Frank Hancock	Saugatuck, Mich.	Apply	Apply	---	Saugatuck Interurban	Near river, also cottages.
St. Pierre Farm	Mrs. J. B. Jones	Saugatuck, Mich.	Apply	Apply	20	Carriage from Depot	Write for particulars.
Maplehurst	Mrs. R. H. Reid	R. D. 2, Fennville	---	\$8.00-\$12	20	Saugatuck Interurban	Cool and restful; modern.
Heinze Cottages	Mrs. Fred Heinze	Saugatuck, Mich.	Apply	Apply	---	Write for instruction	Write for particulars.
Ashton	Mrs. G. H. Shriver	Saugatuck, Mich.	\$1.50	\$9.00	---	Write for instruction	Write for particulars.
Private Home	Mrs. Geo. B. Fisdale	Douglas, Mich.	Apply	Apply	---	Interurban to Saugatuck	Convenient bathing beach.
Batavia Resort	H. Halverson	Saugatuck, Mich.	\$1.50	\$9.00	60	Write for particulars	Convenient to river.
Private Home	Mrs. W. Martin	Box 417, Saugatuck	---	\$9.00	12	Interurban to Saugatuck	Home cooking a specialty.
Barber Farm	David M. Lester	Douglas, Mich.	---	\$7.00	8	Write for particulars	Bank of Kalamazoo River.
Rose Cottage	Mrs. W. H. Manning	Saugatuck, Mich.	\$1.50	\$9.00-\$10	20	Write for particulars	Convenient to everything.
Park House	Louis Eberhardt	Saugatuck, Mich.	\$1.50	\$8.00-\$10	60	Write for directions	Large lawn, fruit, shade.
Hotel Davis	James F. Davis	Saugatuck, Mich.	---	\$5.00	---	One block from river	European plan.
McVea Homestead	Lizzie J. McVea	Douglas, Mich.	Apply	Apply	25	Saugatuck Interurban	Overlooking Lake Michigan.
Private Home	Frank Kerr	Douglas, Mich.	\$1.50	\$8.00	12	Write for particulars	Near lake. Good table.
Fort Snelling	Mrs. N. Fisch	Douglas, Mich.	\$1.50	\$8.00	20	Auto Bus from Saugatuck	Good location; modern.
Cottage for Rent	Mrs. Edw. Williams	Saugatuck, Mich.	Apply	Apply	---	Write for particulars	Half block from river.
Riverside Hotel	G. A. Lynds	Saugatuck, Mich.	\$1.50	Apply	75	Interurban from Holland	An ideal place to rest.
Bird Center	T. B. Dates	Saugatuck, Mich.	---	\$8.00 up	60	Interurban from Holland	8 cottages; overlook river.
The Miot House	Mrs. J. P. Miot	Douglas, Mich.	\$1.25	\$7.00	30	Inter. to Saugatuck; ferry	Write for particulars.
Summer Home	Mrs. R. T. Rogers	Saugatuck, Mich.	Apply	Apply	40	Interurban to Saugatuck	Home cooking; modern.
Idler's Rest	E. Walz	Saugatuck, Mich.	\$1.50	\$8.00-\$12	50	Interurban	Near river and lake.

All ships for this Division stop at Interurban Pier and Holland only.

THE MINERAL SPRINGS HAVE GREAT CURATIVE PROPERTIES



Eden Springs House of David

Many new and great improvements over last year for the coming season at Eden Springs. New improved ten-pin bowling alleys, which afford great amusement for men, women and children. Also great improvement in the bands. In addition, a wonderful swimming and bathing pool, also a large stone ampitheatre, Dance Pavilion. For rooming accommodations make early arrangements.

Eden Springs, Southern Michigan's popular recreation grounds, one mile east of Benton Harbor. A pleasant trolley ride from the boat landing, Twin Cities, passing through Benton Harbor, lands the visitor at the Israelite headquarters, where the band plays and three hours' entertainment may be enjoyed. The grounds are large and the admission is free.

In this delightful, healthful resort, with its many mineral springs, are found many other attractions not furnished in other parts. In the aviary and zoo are kangaroos, also wallabies, a species of kangaroo, and large emus, and numerous strange and beautiful birds from Australia. These and other attractions are in a naturally shaded ravine, which also contains a beautiful lake, walks and drives. A miniature railroad, with improved trains and figure eight track, traverses a spacious park, crossing the ravine at two points, affording a fast, exciting and safe ride. The bridges are capable of holding up a standard locomotive and train. Both adults and children will be amused and instructed by a visit to this most unique resort in Michigan.

Take street car east bearing name, "House of David."

Eastman Springs

Situated on the electric line near Benton Harbor, is known to resorters in all parts of the country, having been visited by hundreds of thousands in the past twenty years. The springs, a score or more in number, are situated in a natural wooded glen of some forty acres, and are one of the most remarkable groups in this or any other country. The waters are pure, sparkling, cold and abundant, and are famed for their curative properties. An unusual feature is, that while these springs break from the ground close to each other, an analysis shows them to possess properties each widely differing from the others.

For those who desire an afternoon of quiet and rest, an afternoon close to nature—where God's handiwork is accentuated among the trees and flowers, where the birds sing—a trip to Eastman Springs is unsurpassed. Here in the midst of a beautiful natural forest are cozy seats and shaded swings, away from the busy world.

A beautiful park for the pleasure of visitors is maintained, together with many cottages, a good hotel, and a sanitarium is conducted in connection with the springs.

Address The Eastman Springs Co., Benton Harbor, Michigan.





BENTON HARBOR AND ST. JOSEPH HOTELS ARE UNSURPASSED

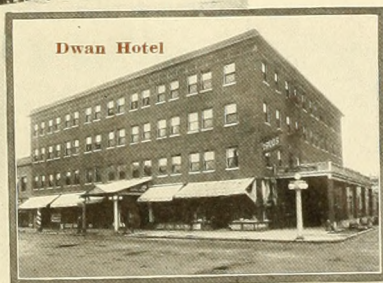
Saltzman Mineral Baths, Benton Harbor, Michigan. Natural Saline Sulphur Water. Nature's remedy for cure of Rheumatism in all its forms, Neuralgia, Skin Diseases, General Debility, Genito-Urinary Diseases, Catarrhal Diseases, Scrofula, Blood Diseases, Diseases of the Liver, Kidney and Stomach, Female Diseases, Alcoholism, Mercuriolism, etc. None but the most skilled attendants are employed, under the supervision of a physician. Prices reasonable. Write for booklet. Dr. W. E. Saltzman, Manager.

The Whitcomb Hotel and Mineral Baths has just completed a new addition and has also thoroughly remodeled and refurnished the hotel, and now has all modern conveniences and is a thoroughly up-to-date hotel in all respects, with accommodations for four hundred guests. One hundred rooms with baths and toilets and with hot and cold water and telephones in all the rooms. The bath business has increased so fast as to make additional room and better accommodations a necessity. These baths are recognized as the best cure for rheumatism and nervous diseases. They are largely patronized by physicians and their families and patients, which is sufficient proof. Write for instructive literature on the subject of mineral baths.



The Hotel Benton, Benton Harbor, Mich. Located on Main. All city cars and interurban lines pass the door. This well known hotel has recently been remodeled and refurnished throughout and made modern in every way. Telephone and running water in every room. A comfortable home for the traveling public. Service either American or European plan. E. S. Richardson, Proprietor.

The Hotel Dwan, Benton Harbor, Michigan. Every room has hot and cold running water, long distance telephone, and clothes closet. **The Dwan Bath House** is built in connection with the hotel, the entrance to the baths being from the hotel lobby and but a few feet from the elevator. The bath house is fitted in the most modern and substantial manner. The walls and partitions are of glass, and the tubs of solid porcelain, which insures an absolutely sanitary condition.



Premier Mineral Baths—the original bath house, founded in 1898. Entirely rebuilt in the last year. The largest and oldest bath house in this section. Sufferers from Rheumatism of any kind, Stomach Trouble, Blood, Skin and Nervous Diseases, Kidney, Liver and Bladder Troubles, Female Diseases, etc., will find here at small cost a Pure Sure Cure. Testimonials and full information sent free on request. Premier Mineral Bath Company, R. J. Laughery, Manager, Benton Harbor, Michigan.



The Lake View Hotel is ideally located for the accommodation of summer visitors as well as for business men. Overlooks both the lake and harbor and is centrally located in regard to railroad stations, boat docks and interurban service. One of the oldest and best hotels in this section. Rates are reasonable and service excellent. Lake Front Park directly across the street. All amusements within short walking distance. The management desires correspondence with those contemplating a stay in St. Joe.

A. B. MORSE COMPANY, ST. JOSEPH, MICHIGAN

Tickets

Tickets to all points are sold subject to delays on account of weather conditions. **Lost Tickets**—This Company is not responsible for lost or destroyed tickets, and purchasers should exercise every precaution for their security. Be sure to examine destination on tickets before leaving window. Any disagreement with agent or purser as to tickets, privileges, etc., the passenger will please pay agent's or purser's claim, obtain receipt and refer same to **General Passenger Agent** at Chicago. All officers are governed by Company rules which they have no authority to change. Full fare is charged for everyone of 12 years and over. Children are limited to half-fare between the ages of five and twelve. Those under five years of age in charge of parents or competent person are carried free of charge. This rule is always enforced.

Redemption of Tickets

Unused tickets or portions of same, issued by this Company, should be sent to the General Passenger Agent, who will be glad to arrange for refund of whatever value the tickets may have, after deducting the regular fare covering the portions of the tickets used.

Berths

Passengers should examine Berth Check to see that same is dated for the trip to be used. Accommodations for sleeping can be secured several weeks in advance if desired, but must be paid for by noon of the date of sailing. Patrons of this Company residing out of the city can secure reservations by wire, phone, or mail, and be assured that their order will be given prompt attention. Requests for reservations should be sent to the General Passenger Agent at Chicago and Agents at Holland, Benton Harbor-St. Joseph terminal, also to the agent of the G. R. & C. Ry. at Grand Rapids, giving full name of party traveling and accommodations desired. Man and wife must purchase whole room. Between Chicago and Benton Harbor and St. Joseph, \$1.00 additional will be charged for use of entire stateroom or parlor, if occupied by only one person, on Steamer leaving Chicago on Saturday nights and on night preceding all Legal Holidays, and leaving Benton Harbor and St. Joseph Sunday nights and on night of all Legal Holidays, from May 28th to September 10th, both dates inclusive. Between Chicago, Holland and Interurban Pier, \$2.00 additional will be charged for use of entire stateroom or parlor if occupied by only one person on Steamer leaving Chicago Friday and Saturday nights and on night preceding all Legal Holidays and leaving Holland or Interurban Pier Sunday and Monday nights and nights of all Legal Holidays from May 28th to September 10th, both dates inclusive.

Baggage

Baggage must be checked or claimed by passengers before boarding steamers. Dogs, birds or other pet animals are not allowed in saloons or staterooms under any circumstances, and must be delivered in care of Baggage Master on board. Only ordinary hand baggage is allowed in staterooms; the Company assumes no responsibility for baggage or other personal effects left in the staterooms or saloons of steamers. 150 pounds of baggage consisting of wearing apparel only, not exceeding \$100 in value, will be transported free on each full-fare ticket, and 75 pounds not exceeding \$50 in value on each half-fare ticket. All baggage weighing in excess of those quantities will be charged for at the rate of 25 cents per 100 pounds, when the passenger fare is \$1.50 or less, and 5 cents additional per hundred pounds for each 30 cents or fraction thereof increase in through passenger fare, with a minimum charge of 25 cents for each shipment. The Graham & Morton Transportation Co. does not assume any liability for loss or damage to baggage beyond the value named above unless a true statement of the value of said baggage is made to said Company at the time when check is issued therefor and an additional amount paid for the carriage thereof at the rate of 25 cents for each hundred dollars valuation in excess of \$100, if checked on full-fare ticket, and in excess of \$50 if checked on half-fare ticket, and unless a Special Declared Valuation Check is secured from said Company showing the declared value of said baggage and the amount paid said Company for assuming the extra declared valuation liability.

Bicycles, Tricycles and Baby Carriages will be transported free at owner's risk as far as local points only.

Storage

Storage will be charged on each piece of baggage, either in-bound or out-bound, checked or not checked, remaining in Graham & Morton Transportation Co.'s dock at Chicago OVER 24 hours, as follows: The first 24 hours free. The second 24 hours or fraction thereof, 25 cents. For each succeeding 24 hours or fraction thereof, 10 cents. **Except**, that baggage received any time Saturday will be held until the same hour Monday without charge, and baggage received any time Sunday will be held until midnight Monday without charge. If, in either case, however, baggage is removed later than the time stated on Monday, then Sunday shall be included in computing the charge. For this exception, legal holidays shall be considered the same as Sundays.

Lost Checks

A collection of 25 cents will be made for each lost duplicate check, whether metal or paper. Before delivery, such baggage must be thoroughly identified and a lost check receipt taken, showing name and address of the claimant. If lost check is found and forwarded to the General Passenger Agent of the Company within 60 days from delivery of baggage, refund will be made.

Suggestions and Complaints

The Company invites suggestions for improvements and criticism of its service, and will be glad to have prompt advice of any incivility or inattention on the part of employees. The management aims to render service first-class in every respect; communications regarding these matters should be addressed to the Assistant to the President and will receive prompt attention.

Through Tickets

Through tickets can be purchased and baggage checked via the G. & M. Line from the following Railroad Companies and their connections:

A. T. & S. F.	C. I. & S.	C. R. I. & P.	C. B. & Q.	C. C. C. & St. L.	I. C.	Penn.	N. Y. C. & St. L.
B. & O.	C. I. & L.	C. & A.	C. G. W.	Erie	L. S. & M. S.	P. M.	Wabash
C. & O.	C. M. & St. P.	C. & E. I.	C. & N. W.	Grand Trunk	M. C.	M. St. P. S. S. M.	

See America First. Following Lines Reach Lakes, Coast, Sound and River Resorts

Arnold Transit Co. Mackinac Island Mackinaw City Soo St. Ignace MICHAEL DOUD, G. P. A. Mackinac Island, Mich.	Crosby Transportation Co. Milwaukee Grand Haven Muskegon F. P. WALSH, G. P. A. Milwaukee, Wis.	Goodrich Transit Co. Chicago Milwaukee Grand Haven Mackinac Sault Ste. Marie Green Bay Points PARK ROBBINS, G. P. A. Chicago, Ill.	Niagara Navigation Co. Buffalo-Niagara Falls-Toronto Route Niagara-on-the-Lake J. F. PIERCE, G. P. A. Montreal, Que.
Catskill Evening Lines New York Catskill Hudson Coxsackie EDWIN H. SNYDER, G. Mgr. New York, N. Y.	Detroit & Cleveland Nav. Co. Detroit Buffalo Cleveland Toledo Put-in-Bay Mackinac Island Alpena, St. Ignace, Way Ports L. G. LEWIS, G. P. A. Detroit, Mich.	Hartford & New York Trans. Co. New York Hartford Providence GEO. C. HILLS, G. F. & P. A. Pier 19 E. R., New York	Northern Michigan Transp. Co. Chicago Parry Sound Collingwood Mackinac Island Sault Ste. Marie J. C. CONLEY, G. P. A. Chicago, Ill.
Central-Hudson Steamboat Co. New York Newburg Poughkeepsie Kingston H. R. O'DELL, General Mgr. Newburg, N. Y.	Detroit River Steamers Detroit & Windsor Ferry Co. Detroit Windsor Boj-Lo Belle Isle FRED J. MASON, G. P. A. Detroit, Mich.	Hudson Navigation Co. New York Albany Troy R. M. MUCH, P. T. M. New York, N. Y.	Pere Marquette Line Steamers Milwaukee Ludington Manistee Onekama Arcadia Frankfort F. C. REYNOLDS, Traffic Mgr. Milwaukee, Wis.
Champlain Transportation Co. Lake George Lake Champlain M. J. POWERS, P. A. Albany, N. Y.	Erie & Western Transportation Co. (Anchor Line) Buffalo Erie Cleveland Detroit Mackinac Soo Duluth H. D. HOSMER, G. P. A. Buffalo, N. Y.	Hudson River Day Line New York and Albany, with Way Landings F. B. HIBBARD, G. P. A. Desbrosses St. Pier, New York	R. & O. Navigation Co. Toronto Montreal Quebec Chicoutimi J. F. PIERCE, G. P. A. Montreal, Que.
Chicago & South Haven S. S. Co. Chicago South Haven W. P. SEYMOUR, G. P. A. Chicago, Ill.	Graham & Morton Trans. Co. Chicago St. Joseph Benton Harbor Holland Grand Rapids Saugatuck H. MEYERING, G. P. A. Chicago, Ill.	Montauk Steamboat Co., Ltd. New York, Glen Cove, Shelter Island, Sag Harbor, N. Y. Block Island, R. I., and Sag Harbor, New London, Conn. HOWARD M. SMITH, G. P. A. New York, N. Y.	Thousand Islands Steamboat Co. St. Lawrence River Resorts Alexandria Bay Clayton Thousand Island Park J. F. PIERCE, G. P. A. Montreal, Que.
Cleveland & Buffalo Transit Co. Buffalo Put-in-Bay Cleveland Port Stanley, Ont. Cedar Point W. F. CHERMAN, G. P. A. Cleveland, Ohio		Norfolk & Wash. Steamboat Co. Washington Norfolk Old Point Comfort W. H. CALLAHAN, Tfr. Mgr. Washington, D. C.	White Star Line Toledo Detroit Port Huron C. F. BIELMAN, Traffic Mgr. Detroit, Mich.

NOTE.—Address the above for printed matter pertaining to their respective lines.

ALL STEAMERS EQUIPPED WITH WIRELESS TELEGRAPH.

LIBRARY OF CONGRESS



Grand Rapids Short Line

Grand Rapids

Holland

Saugatuck

Ottawa Beach

Macatawa Park

Schedule Effective June 28 to September 7, 1915

EASTBOUND	Daily ex. Sat. & Sun.	Daily ex. Sunday	Saturday only	Sunday only	Sunday only	WESTBOUND	Daily ex. Sunday	Daily	Sunday only	Sun. only Spec'l car
Chicago -----Lv.	9:00 a.m.	8:30 p.m.	1:30 p.m.	9:30 a.m.	10:00 p.m.	Grand Rapids (Inter.)Lv.	8:20 a.m.	8:45 p.m.	10:45 a.m.	
Interurban Pier ^o ---Ar.	3:00 p.m.	3:30 a.m.	7:00 p.m.	3:30 p.m.	4:30 a.m.	Saugatuck (Inter.)---Lv.	8:45 a.m.	9:00 p.m.	12:00 n'n	9:40 p.m.
Holland -----Ar.	4:00 p.m.	6:00 a.m.	8:00 p.m.	4:30 p.m.	6:00 a.m.	Holland -----Lv.	9:00 p.m.	9:00 p.m.	12:00 n'n	9:00 p.m.
Saugatuck (Inter.)---Ar.	3:30 p.m.	5:45 a.m.	7:30 p.m.	4:00 p.m.	5:45 a.m.	Interurban Pier ^o ---Lv.	9:15 a.m.	10:30 p.m.	12:45 p.m.	10:30 p.m.
Grand Rapids (Inter.)Ar.	4:30 p.m.	6:35 a.m.	8:30 p.m.	5:00 p.m.	6:35 a.m.	Chicago -----Ar.	4:30 p.m.	5:00 a.m.	9:00 p.m.	5:00 a.m.

^oInterurban Pier is located on the south side of Macatawa Bay, opposite Ottawa Beach, between Jenison Park and Macatawa, where connection is made with ferry boats to either of the above places.

Connecting in Chicago with all railroads, steamboats and interurbans.

Connecting at Interurban Pier with G. R. H. & C. Interurban.

Connecting in Holland with P. M. R. R.

Connecting in Grand Rapids with G. R., H. & C. Interurban, P. M. M. C., G. R. & I., L. S. & M. S., and Grand Trunk Railroads.

The Dustless Way to Happyland

The World's Greatest Fruit Belt and Resort Country

St. Joseph, Benton Harbor, Paw Paw Lake

Schedule, June 28 to September 7, 1915

EASTBOUND	Daily ex. Sunday	Daily	Saturday only	Sunday only	Monday only	WESTBOUND	Daily	Daily ex. Saturday	Saturday only	Sunday only	M'n'd'y & Saturday
Chicago -----Lv.	9:30 a.m.	11:30 p.m.	2:00 p.m.	10:00 a.m.	12:00 n'n	South Bend†-----Lv.	3:00 p.m.	8:00 p.m.	9:00 p.m.	4:00 p.m.	6:00 a.m.
Central Dock ^o ---Ar.	1:45 p.m.	4:00 a.m.	6:00 p.m.	2:00 p.m.	4:00 p.m.	Niles†-----Lv.	3:26 p.m.	8:26 p.m.	9:26 p.m.	4:26 p.m.	6:26 a.m.
Paw Paw Lake†---Ar.	3:25 p.m.	6:25 a.m.	7:20 p.m.	3:25 p.m.	5:25 p.m.	Dowagiac†-----Lv.	3:30 p.m.	8:00 p.m.	9:30 p.m.	3:30 p.m.	6:30 a.m.
Dowagiac†-----Ar.	3:50 p.m.	7:50 a.m.	7:50 p.m.	3:50 p.m.	5:50 p.m.	Paw Paw Lake†---Lv.	3:30 p.m.	8:30 p.m.	9:30 p.m.	4:30 p.m.	6:30 a.m.
Niles†-----Ar.	3:26 p.m.	7:26 a.m.	7:26 p.m.	3:26 p.m.	5:26 p.m.	Central Dock-----Lv.	5:00 p.m.	10:00 p.m.	11:00 p.m.	6:00 p.m.	8:00 a.m.
South Bend†-----Ar.	3:55 p.m.	7:55 a.m.	7:55 p.m.	3:55 p.m.	5:55 p.m.	Chicago -----Ar.	9:00 p.m.	2:30 a.m.	3:00 a.m.	10:00 p.m.	12:00 n'n

^oConnecting at St. Joseph and Benton Harbor Central Dock with Southern Michigan and C., S. B. & N. I., Benton Harbor-St. Joe Electric Line, also the P. M., M. C., and Big Four Railroads.

†Interurban Railway.

The above schedule provides two steamers out of Chicago Saturday nights and from Central Dock Sunday afternoons, and two steamers on all rush trips when needed.

The new Graham & Morton Central Dock is located on Main Street, midway between St. Joseph and Benton Harbor, on the Street Railway and the termination of the Suburban Electric Lines, where will be found ample and convenient passenger accommodations. Telephone No. 364.

Special Time Card for Fourth of July and Labor Day.

This Company reserves the right to change this schedule without notice. This sailing list shows the time when steamers are expected to sail from and arrive at the several ports, but their sailing or arrival at the time shown is not guaranteed, nor will the Graham & Morton Transportation Company hold itself responsible for any delay, or consequences arising therefrom.

Local Passenger Fares, June 28 to September 7, 1915

BETWEEN CHICAGO AND	Central Dock	Holland	Interurban Pier	Saugatuck	Grand Rapids
One Way -----	\$1.00	\$2.00	\$2.00	\$2.00	\$2.75
Season, Round Trip-----	1.75	3.75	3.75	3.75	5.25
Round Trip, Day Excursion	1.25				
Round Trip, 12:00 Noon----	1.00				

BERTHS AND MEALS.—Holland Division: Cabin, Entire Stateroom, \$2.25; Lower Berth, \$1.25; Upper Berth, \$1.00. Benton Harbor-St. Joseph Division: Cabin, Entire Stateroom, \$2.00; Lower Berth, \$1.25; Upper Berth, 75 cts. On both Divisions, Hurricane Deck, Entire Stateroom, \$2.50; Lower Berth, \$1.50; Upper Berth, \$1.00. Staterooms below Main Deck in Lower Cabin and Trunk Rooms, in center of Cabin, Entire Stateroom, \$1.75; Lower Berth, \$1.00; Upper Berth, 75 cts. Parlors, \$3.00 to \$5.00.

Breakfast served a la carte, 5:30 to 8:00 A. M. Dinner, \$1.00 Table d'Hote, 12:00 Noon and 6:00 P. M.

H. MEYERING, G. P. A., Chicago, Illinois

Graham & Morton Transportation Co.

Telephone Central 2162

Dock Foot of Wabash Ave., Chicago, Illinois

ALL STEAMERS EQUIPPED WITH WIRELESS TELEGRAPH.