

THE MANY STORIES OF
singapore

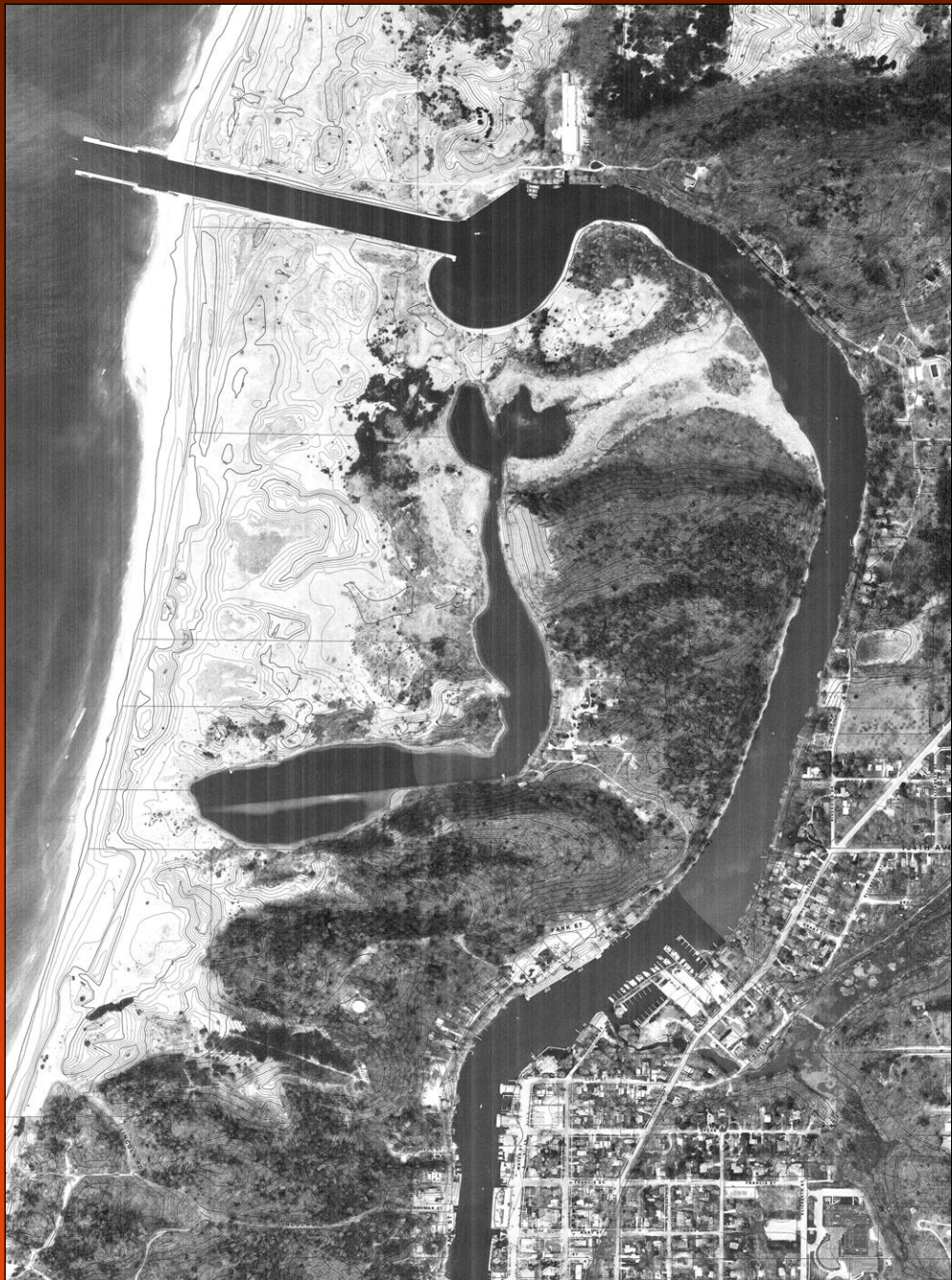
Jim Schmiechen | October 10, 2007

SAUGATUCK-DOUGLAS HISTORICAL SOCIETY

THE MANY STORIES OF
singapore

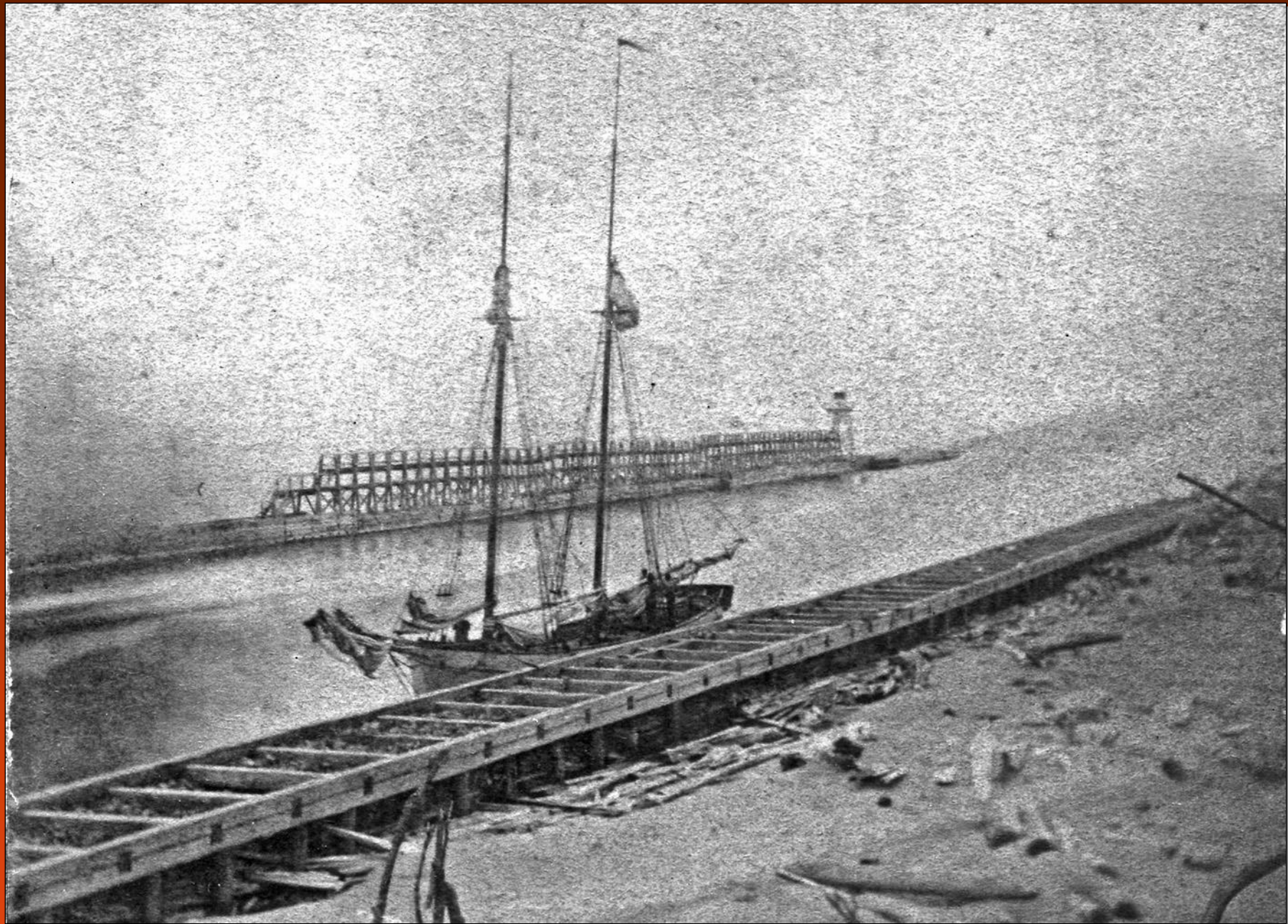
Jim Schmiechen | October 10, 2007

SAUGATUCK-DOUGLAS HISTORICAL SOCIETY



Spring 2007



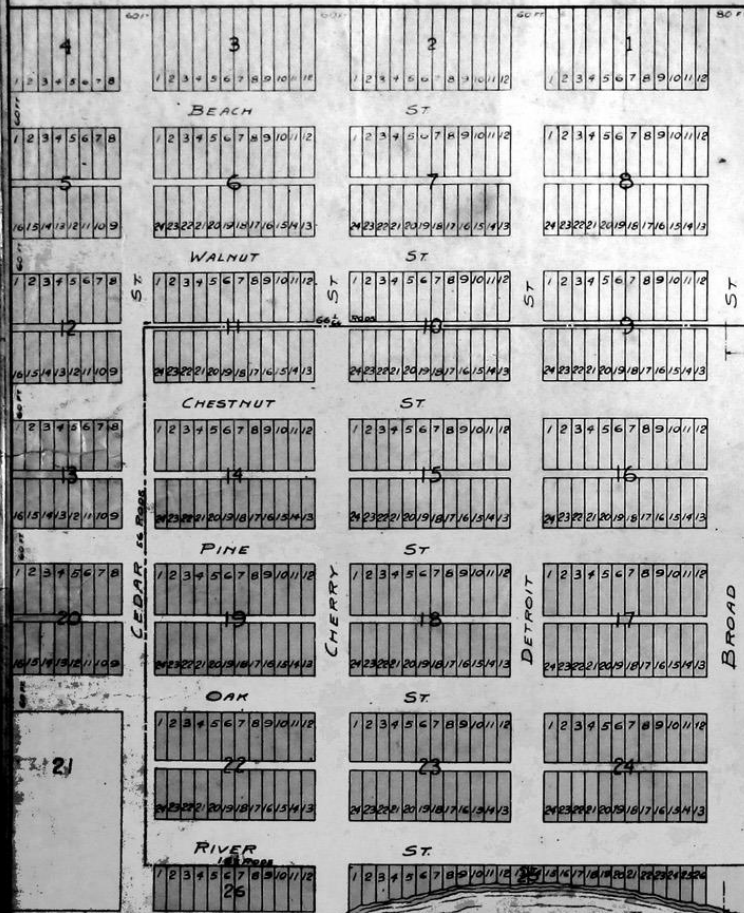




Scale 2 Inches



MAP OF SINGAPORE MICHIGAN



NOTES FOR THE WEST HALF OF THE PLAT

THE LOTS ARE 25 FT WIDE BY 90 FT DEEP, EXCEPT THE NORTH RANGE OF LOTS, WHICH ARE FRACTIONAL, BEING ABOUT 140 FEET LONG, AND THE RANGE OF LOTS ON THE WEST SIDE OF THE PLAT ARE ALSO FRACTIONAL.

THE LOTS ON BLOCK 26 ARE 25 FEET BY 82 FEET. THOSE IN BLOCK 25 ARE BOUNDED ON THE SOUTH BY THE RIVER, AND ARE ALL 25 FEET WIDE EXCEPT LOTS 13 & 14 WHICH ARE 30 FEET ON THE FRONT.

BLOCK 27 CONTAINING 3 ACRES, OWNED BY THE NEW YORK & MICHIGAN CO ON WHICH A STEAM SAW MILL IS NOW ERECTING.

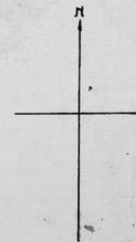
THE STREETS ARE 60 FEET WIDE EXCEPT BROAD & RIVER STREETS, WHICH ARE 80 FEET WIDE, & THE ALLEYS ARE 15 FEET WIDE.

SCALE - 2 CHAINS = 132 FT. PER INCH.

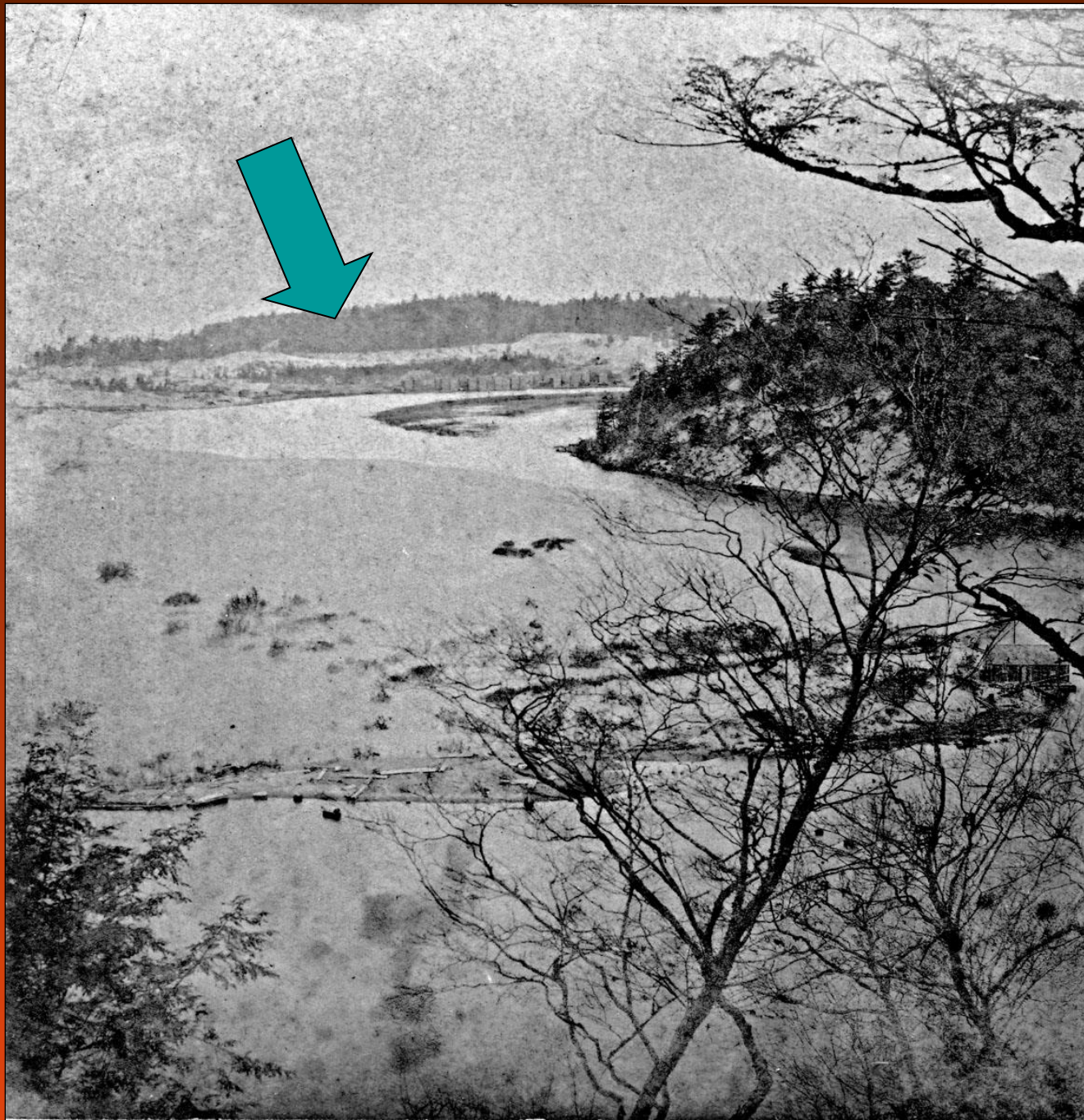
SINGAPORE, FEBRUARY 1833

SURVEYED BY

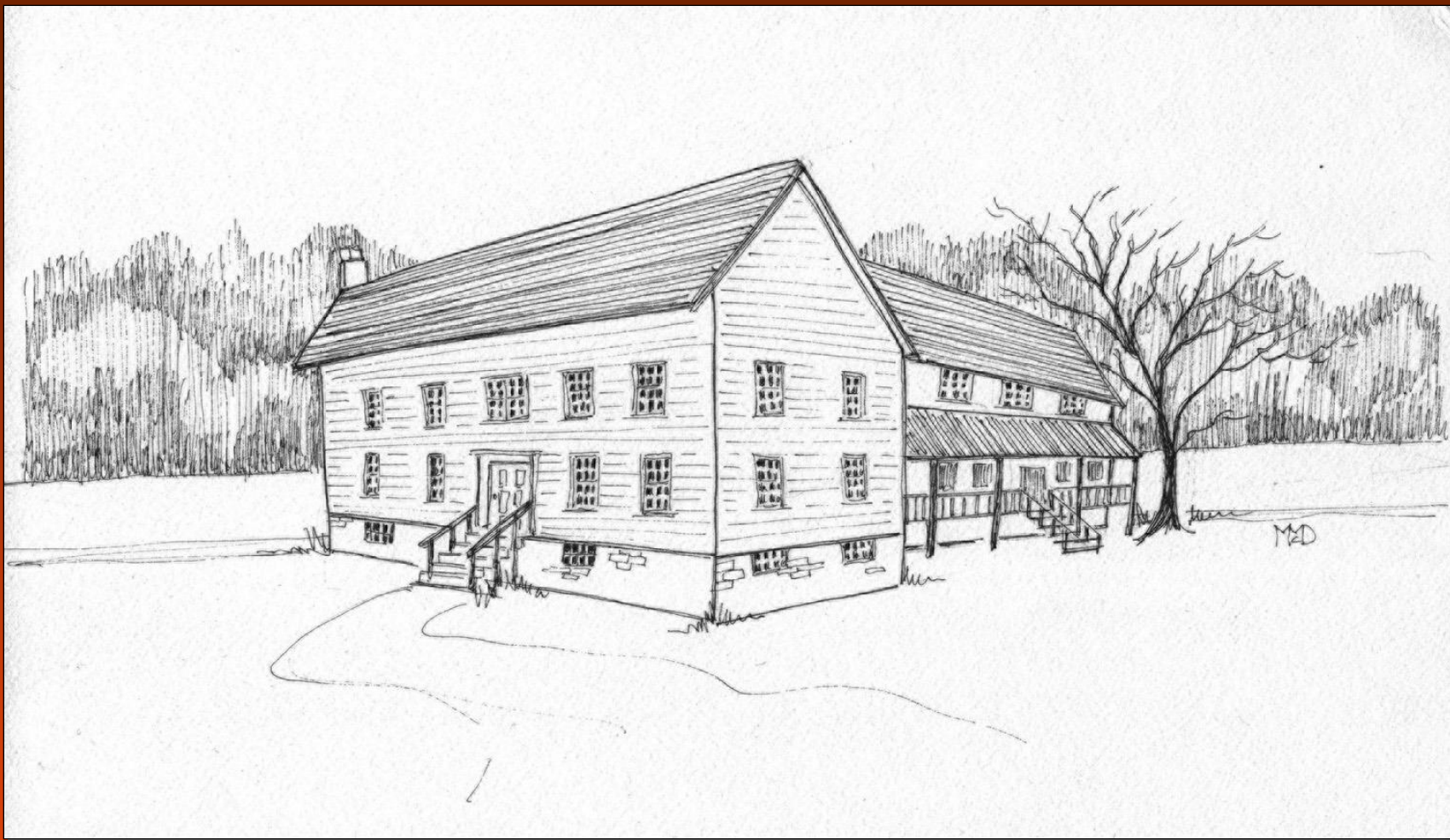
G. WILDER

































THE MANY STORIES OF
singapore

Jim Schmiechen | October 10, 2007

SAUGATUCK-DOUGLAS HISTORICAL SOCIETY

■
singapore

THANK YOU

SAUGATUCK-DOUGLAS HISTORICAL SOCIETY