

# Getting There From Here

Bridges, Gas Stations, and the  
Chain Ferry





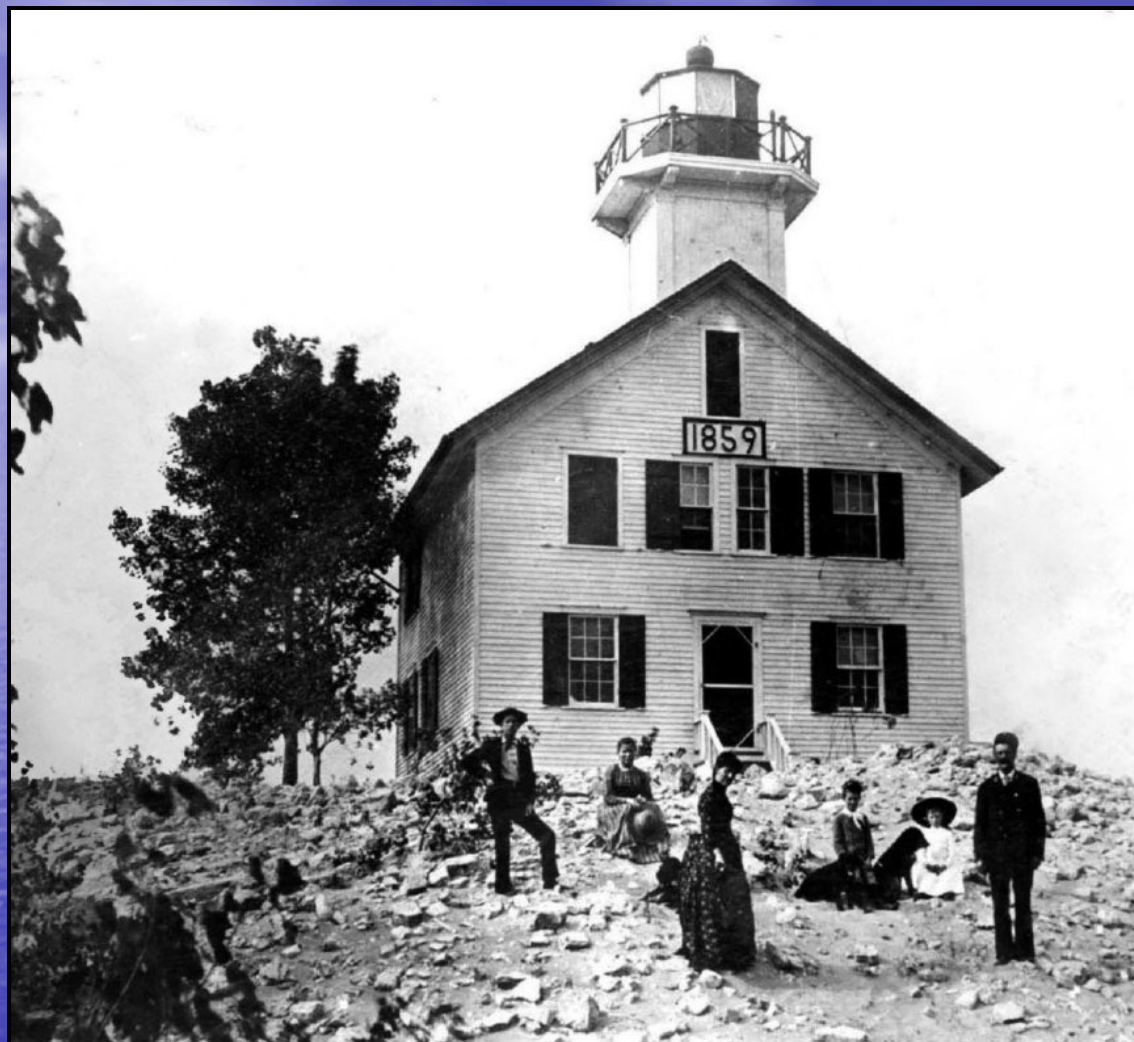


DOUGLAS, MICH.



OUTWARD BOUND, SAUGATUCK MICH.





THE LIGHTHOUSE BEFORE RENOVATION CA 1885  
CAPT GEORGE BAKER AND FAMILY  
L to R Wm. B. Baker, Mrs. Alex Shriver, Mrs. Geo. H. Baker  
Geo. E. Baker, Myrt Shriver, Geo. H. Baker  
Stones barged from Alpena, Michigan







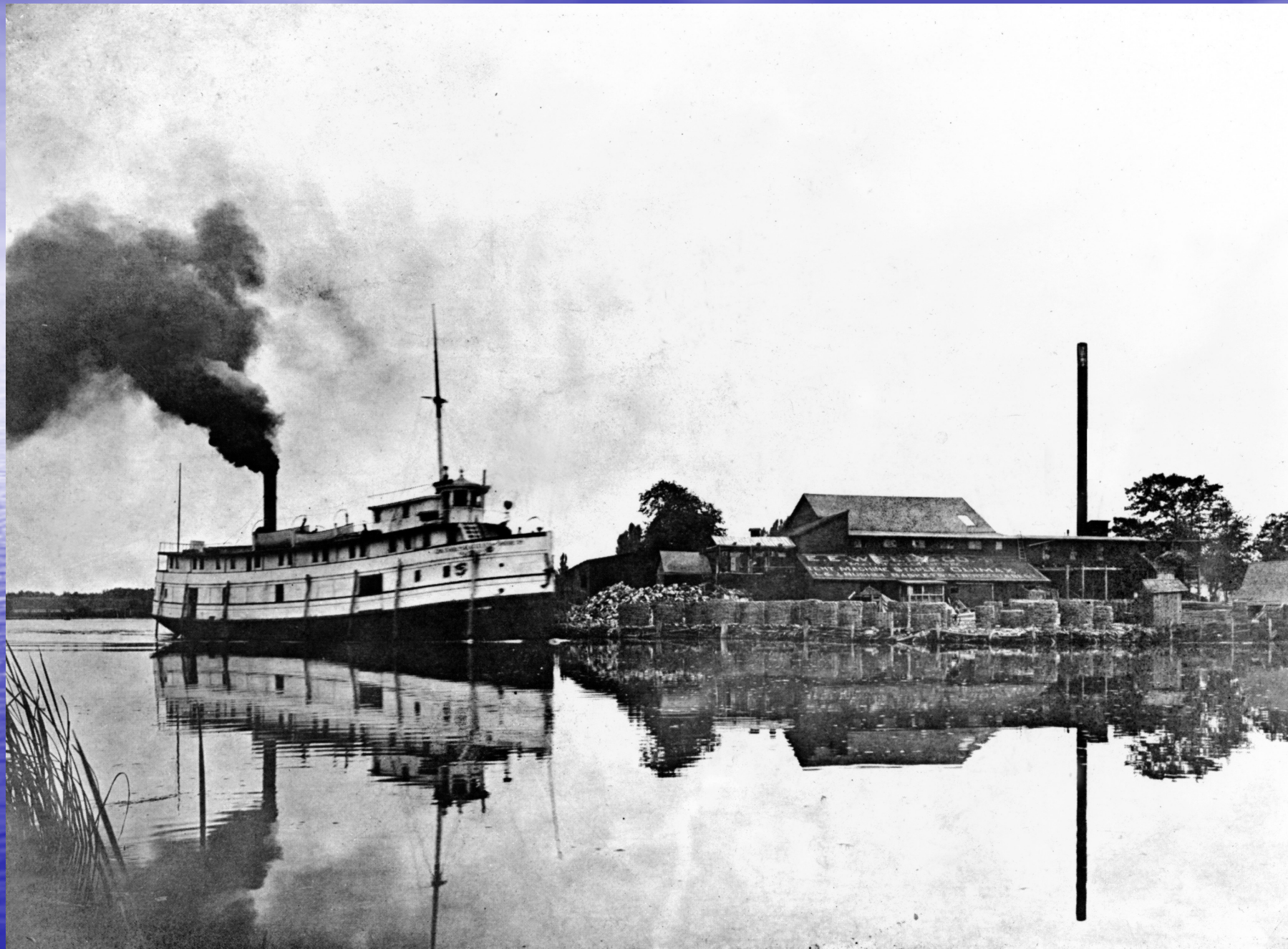


Geo. H. Sheridan Light  
Keeper 1909-14

76





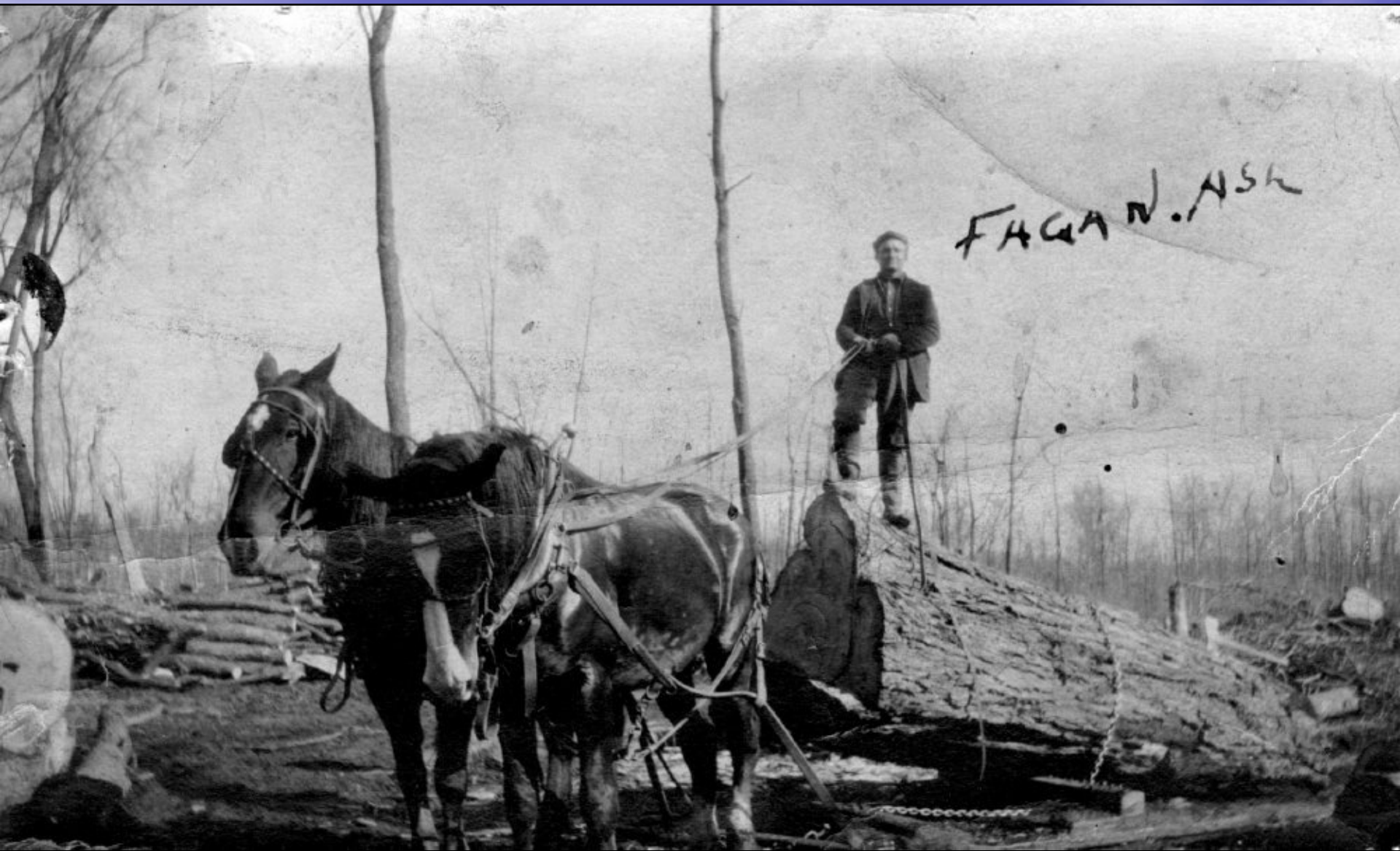
















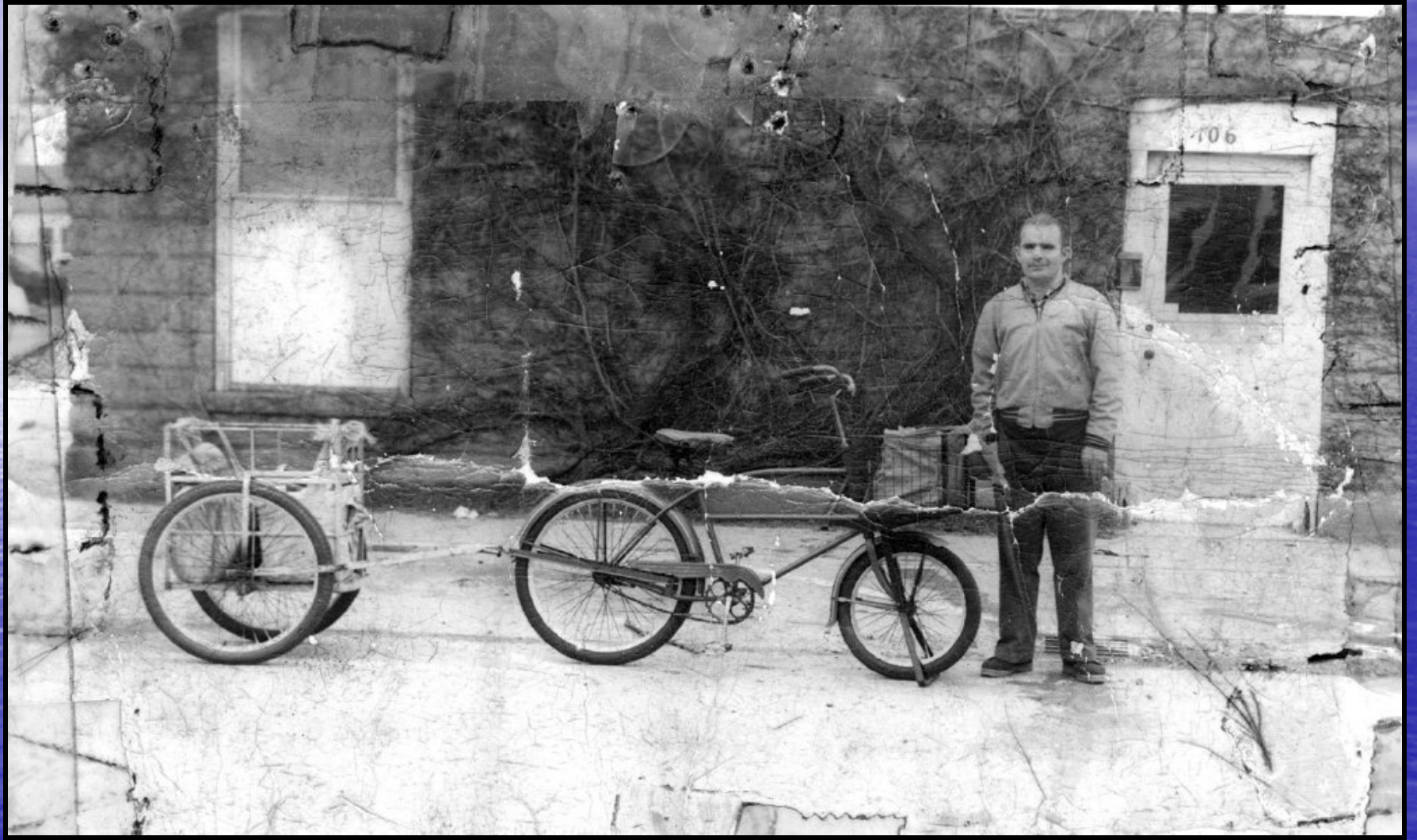


1-5

Enteruban Station. Saugatuck Mich.





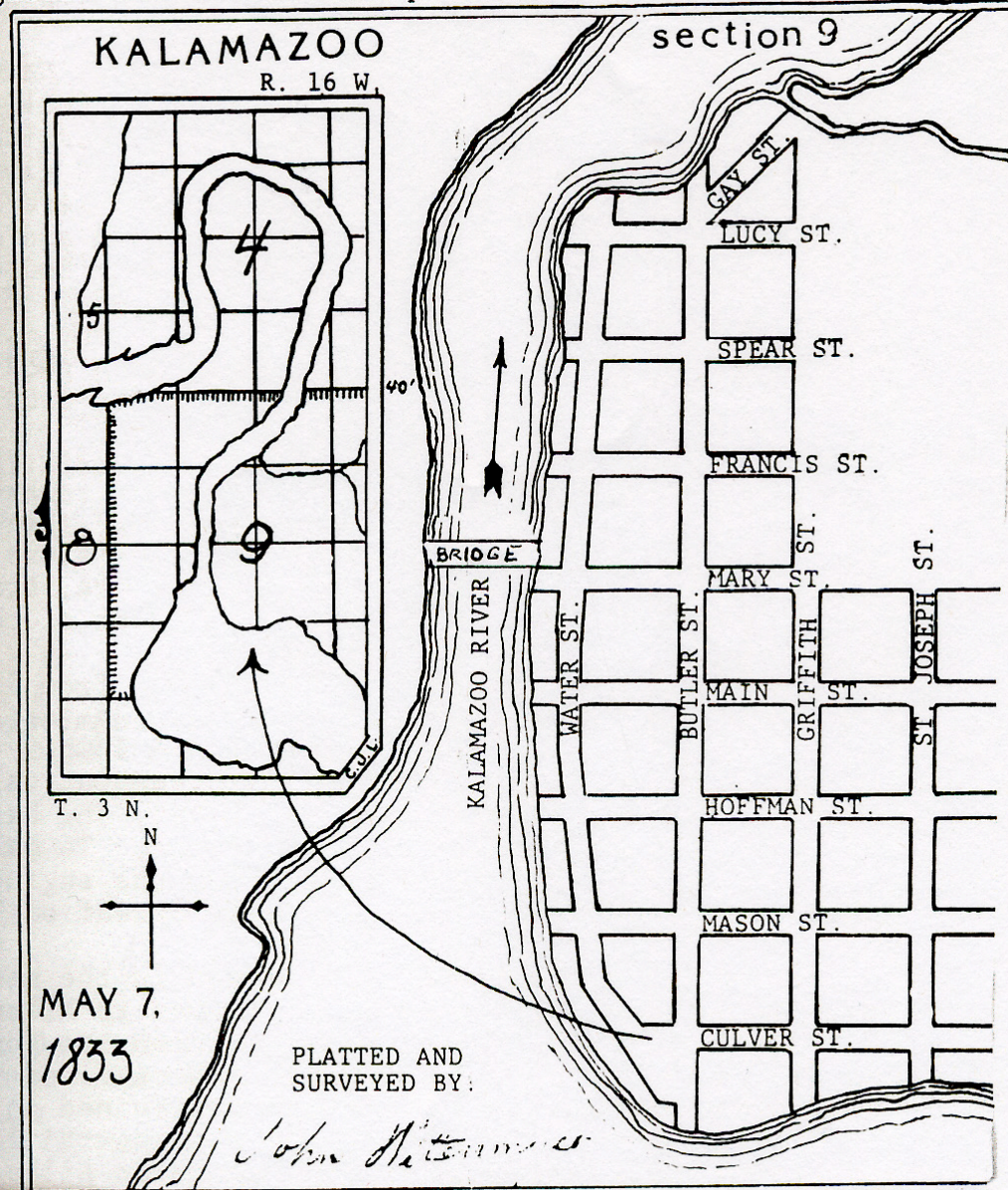








d Saugatuck and the township followed suit in 1833.













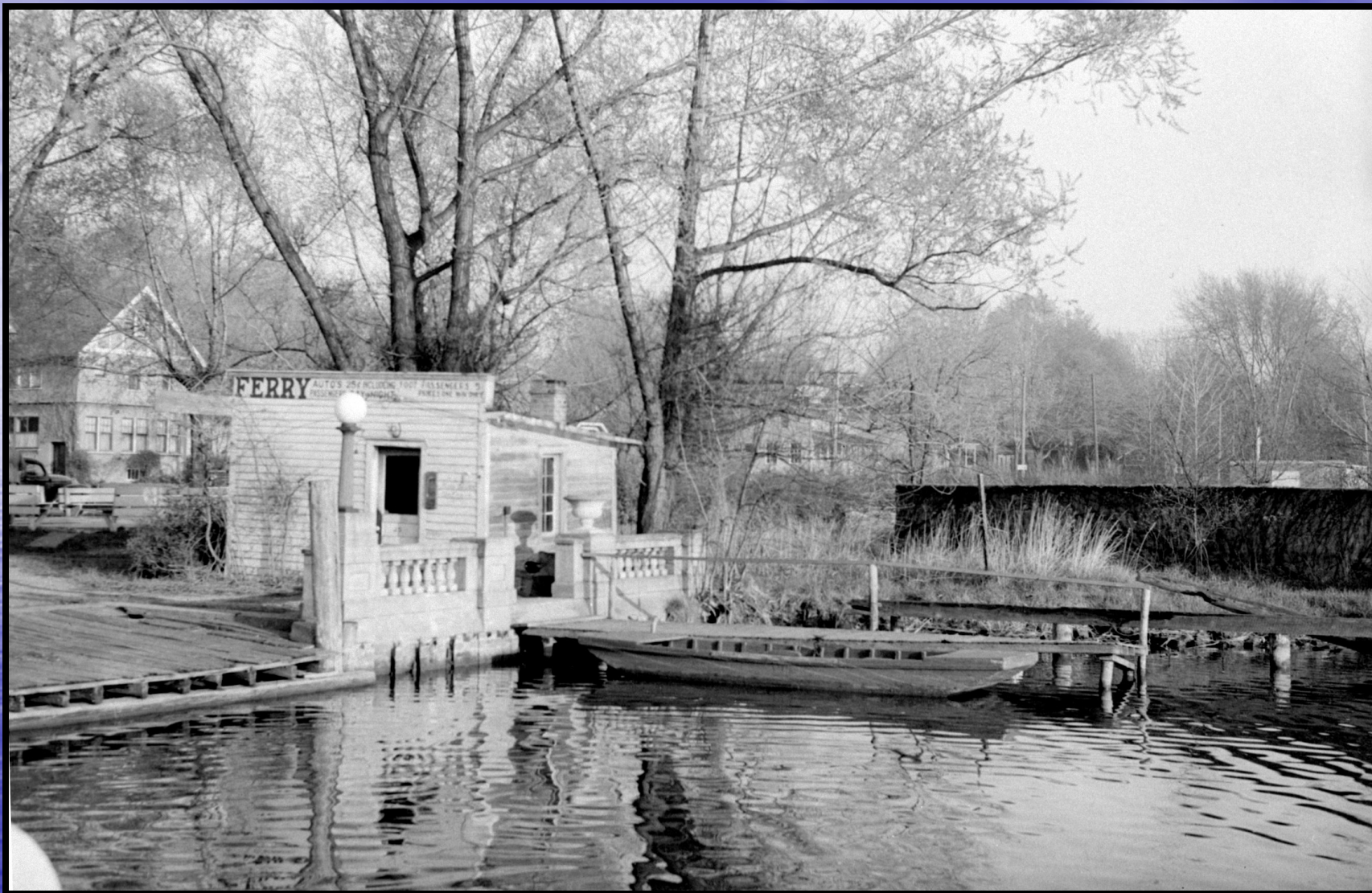


















M A Z O O DOUG

*Saugatuck Town*

Scale 30 Rods to

Vinegar Factory

Vinegar Bridge

New York City

Draw  
Bridge

*Williams Dicker, & Gray*

7.a

S. S. Mil-

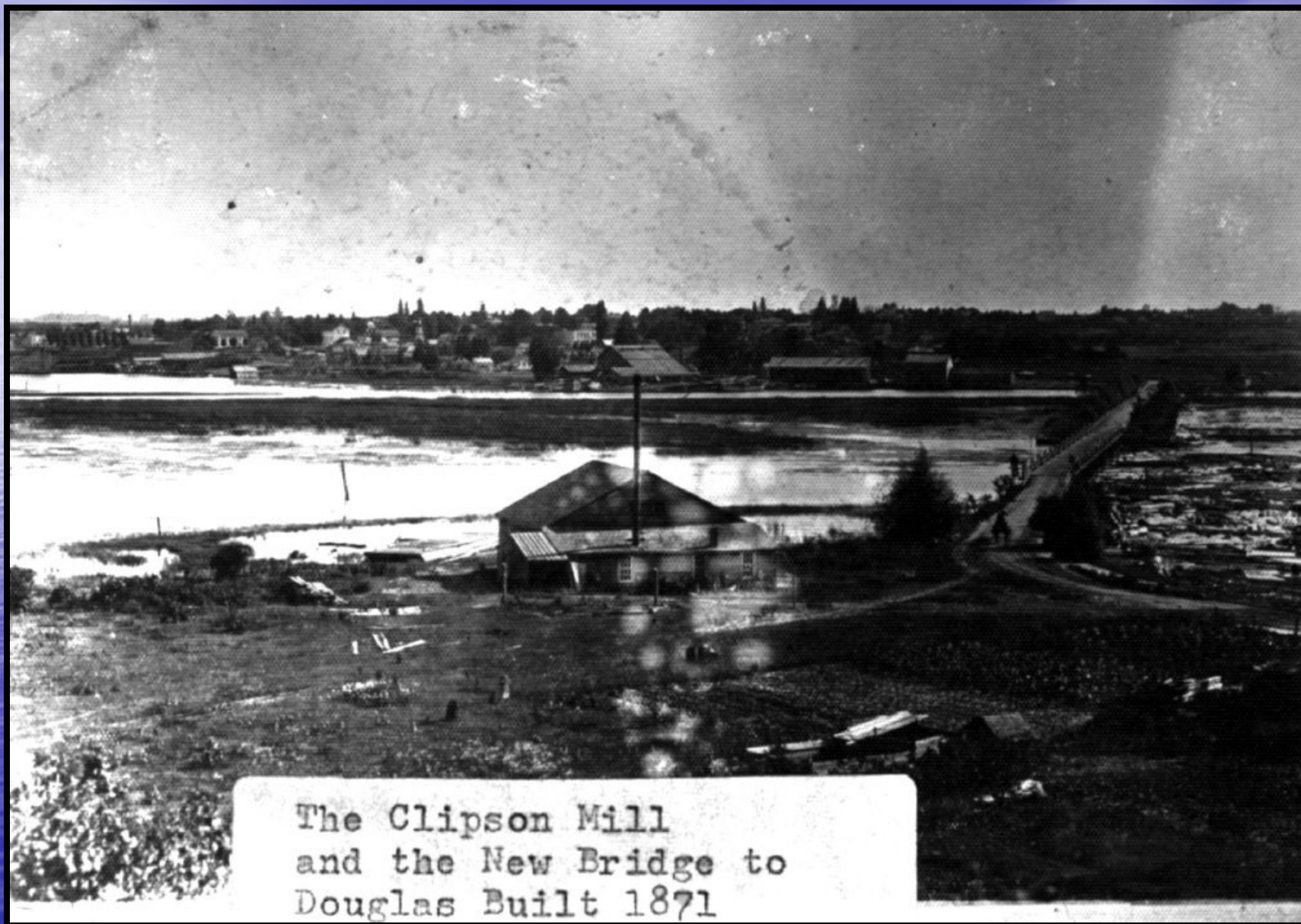
29 Oct

26



Old bridge house





The Clipson Mill  
and the New Bridge to  
Douglas Built 1871





BETWEEN THE BRIDGES DOUGLAS MICH.

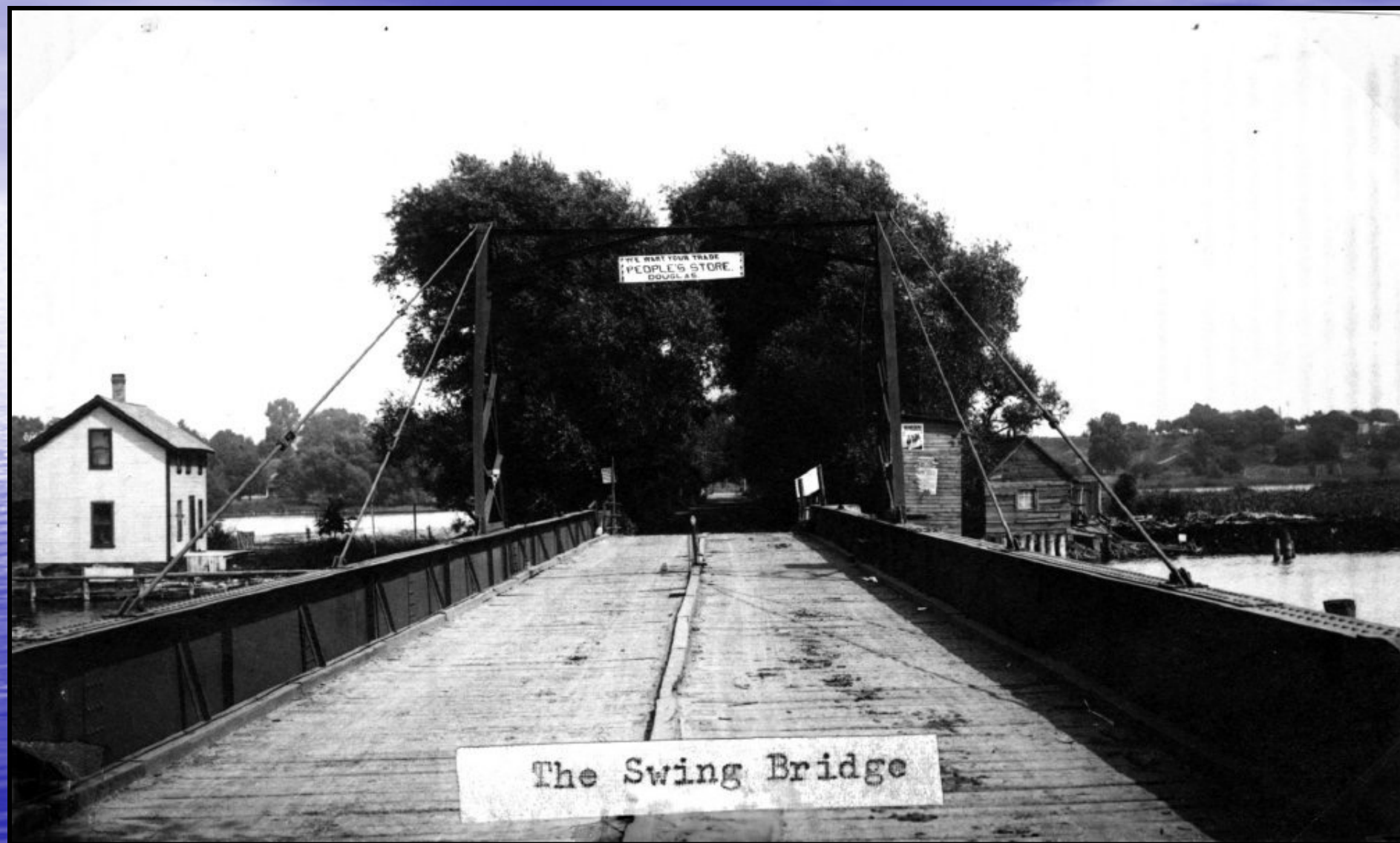


Insert swing bridge—p84 snaps









WE WANT YOUR TRADE  
PEOPLE'S STORE  
DOUGLAS

The Swing Bridge















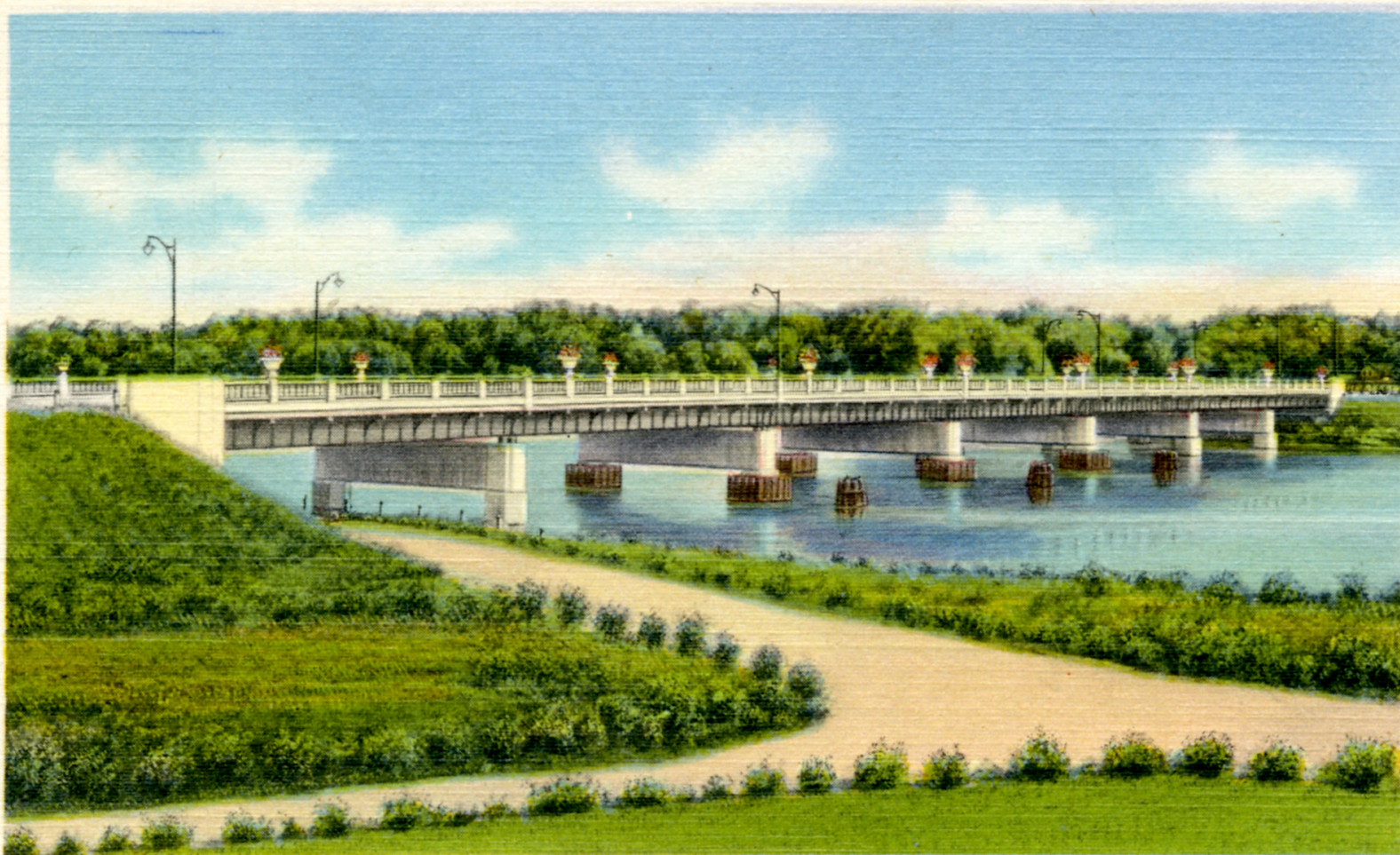








*Bridge Crossing Kalamazoo River at Saugatuck, Mich.*



OB-H302





Insert history mystery photo from July 15—interurban stop with car















Take the Bus and Leave the  
Driving to Us.

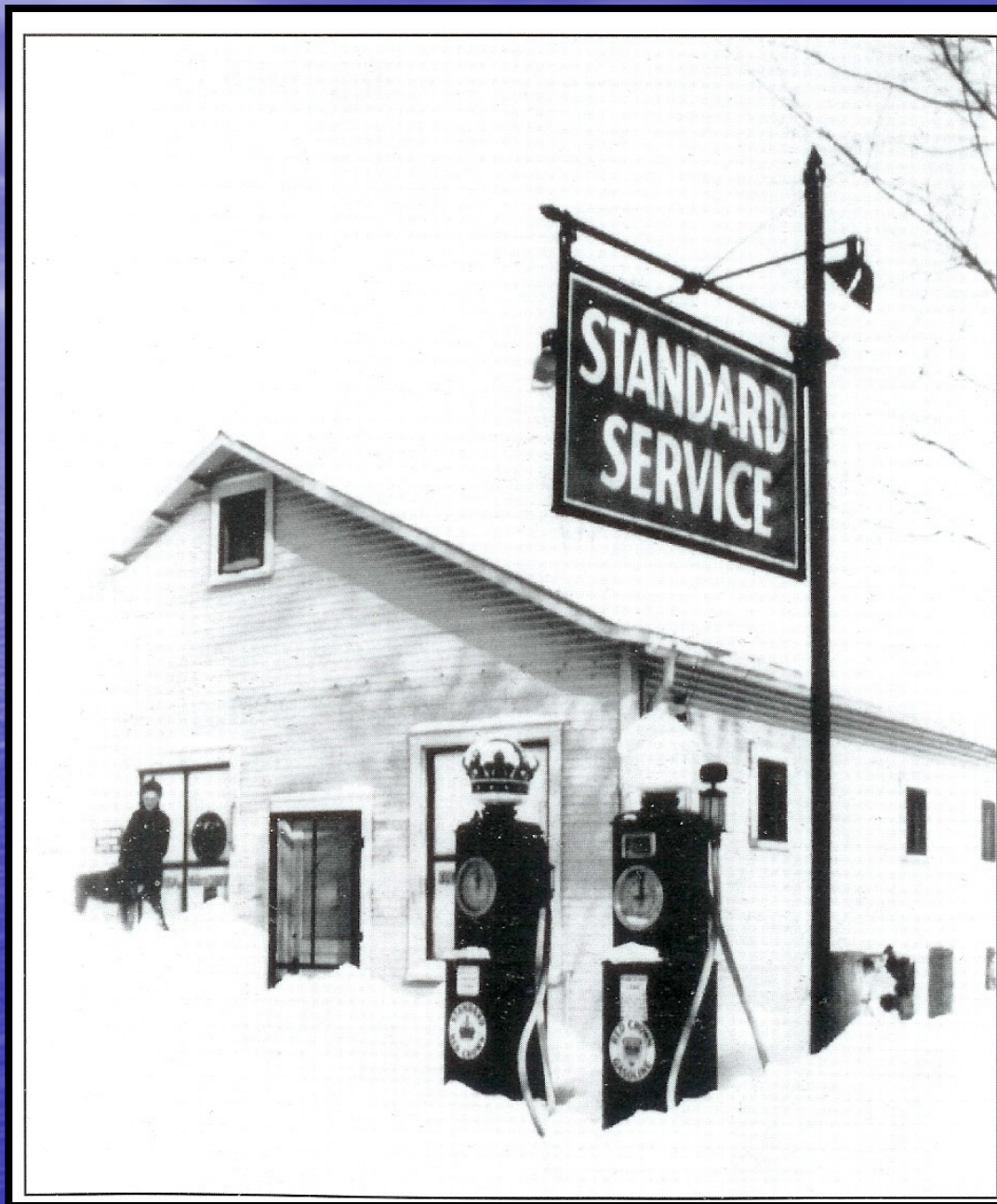


DOUGLAS D.R.T. Co.

DOUGLAS Mich.

40







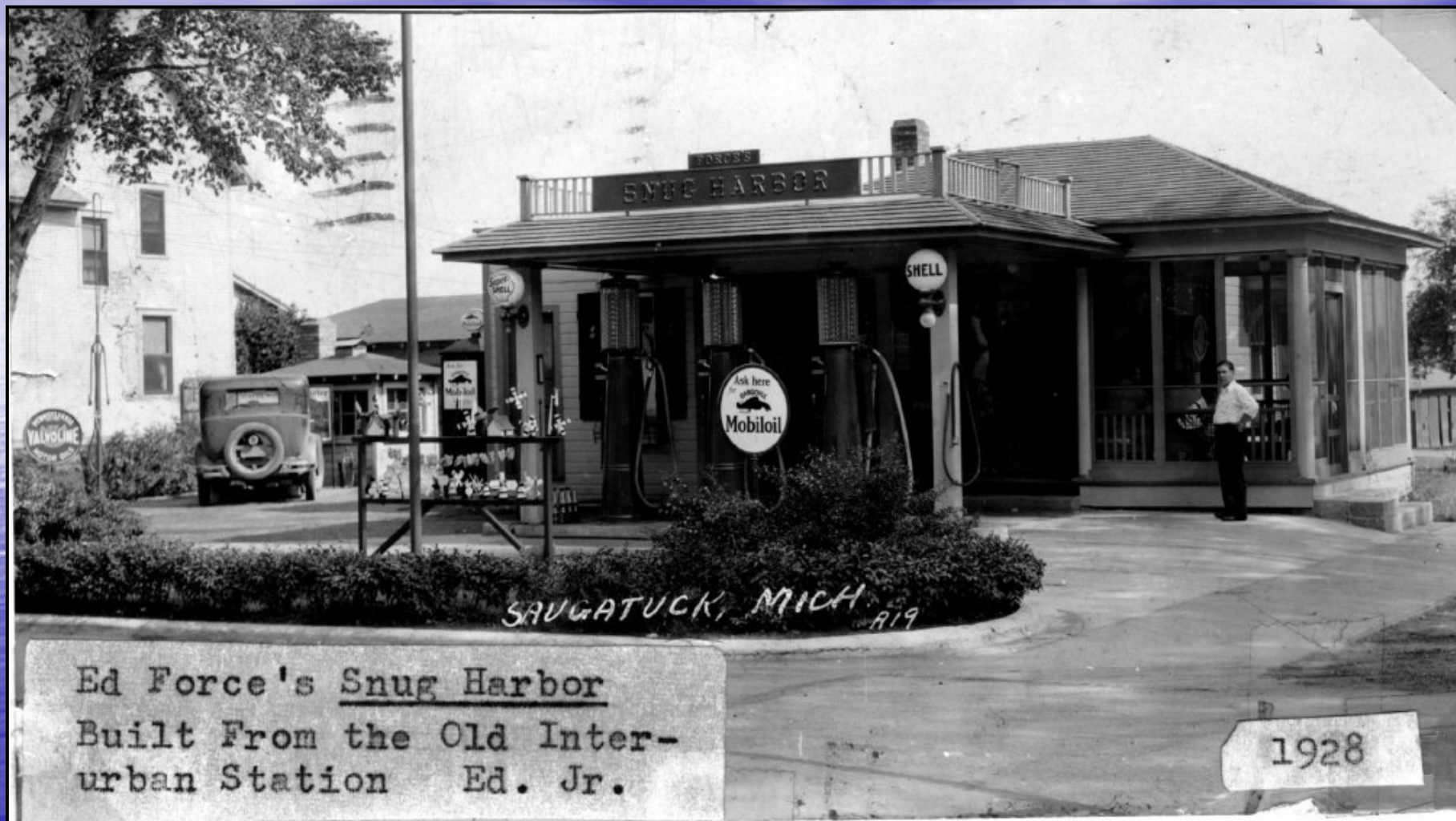






Add ferry store with gas pump/car





Ed Force's Snug Harbor  
Built From the Old Inter-  
urban Station Ed. Jr.

1928

























Insert millar station photos –next 3







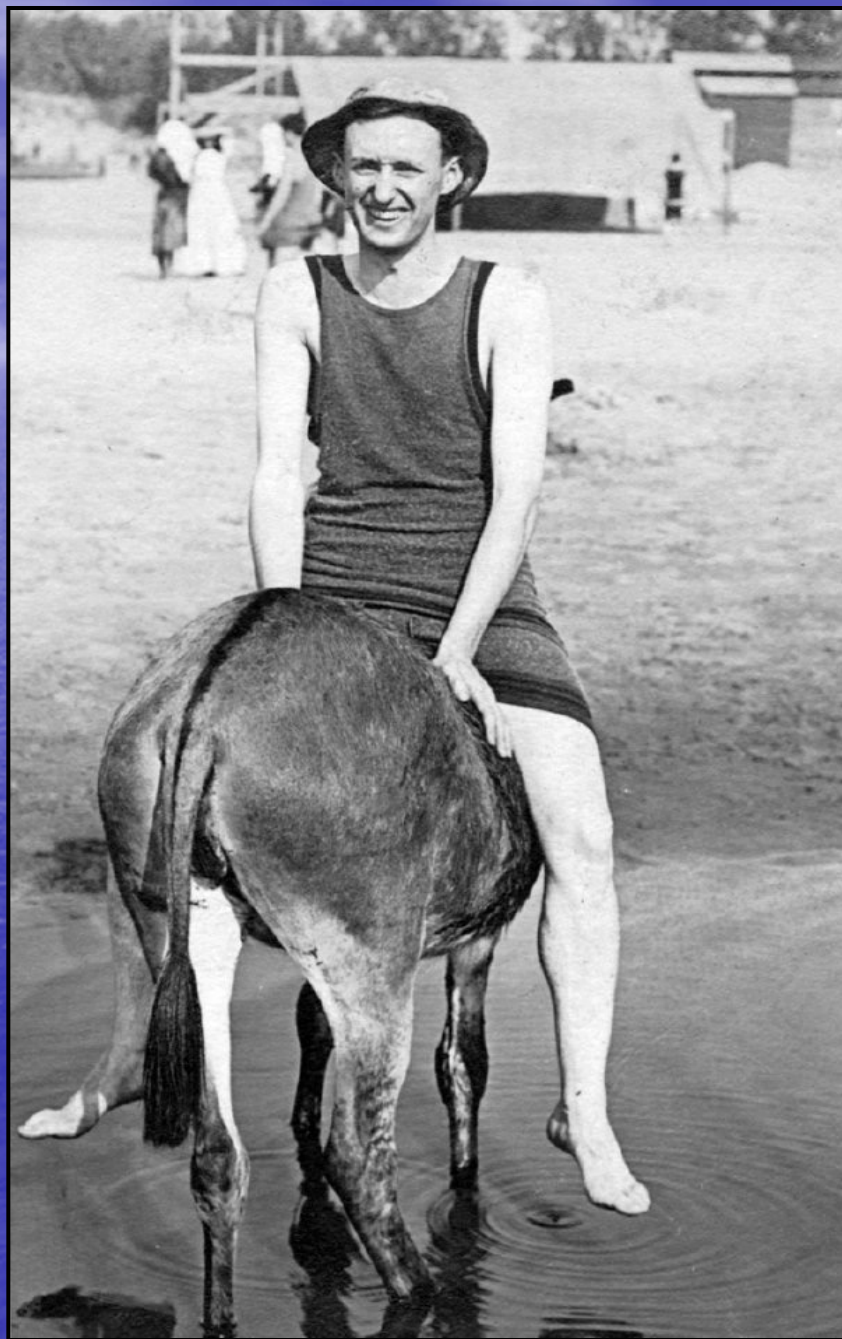






Photo of milar family hoouse







# The End

Examination next week—know all images  
by name and date.