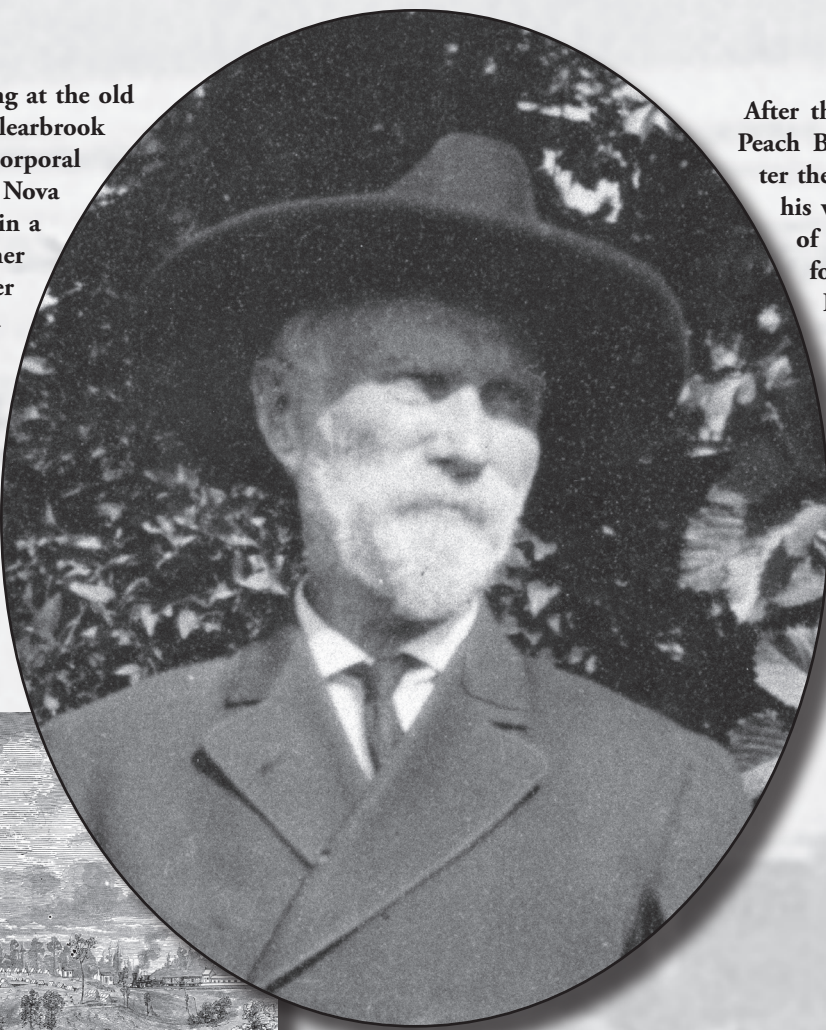


REMEMBERING THE CIVIL WAR

William White was a 26-year-old tanner and currier working at the old Wallin Tannery, situated about where the fifth green is at Clearbrook Golf Club today, when he enlisted August 14, 1862, as a corporal in Co. I, 5th Michigan Cavalry. He was born in Cape Breton, Nova Scotia, Canada, but left home at nine years of age to work in a coal mine, coming to Saugatuck in 1855. He was taken prisoner at Richmond, Virginia, on March 1, 1864, and was a prisoner at Libby and Andersonville prisons before being exchanged and rejoining his company on December 28, 1864.

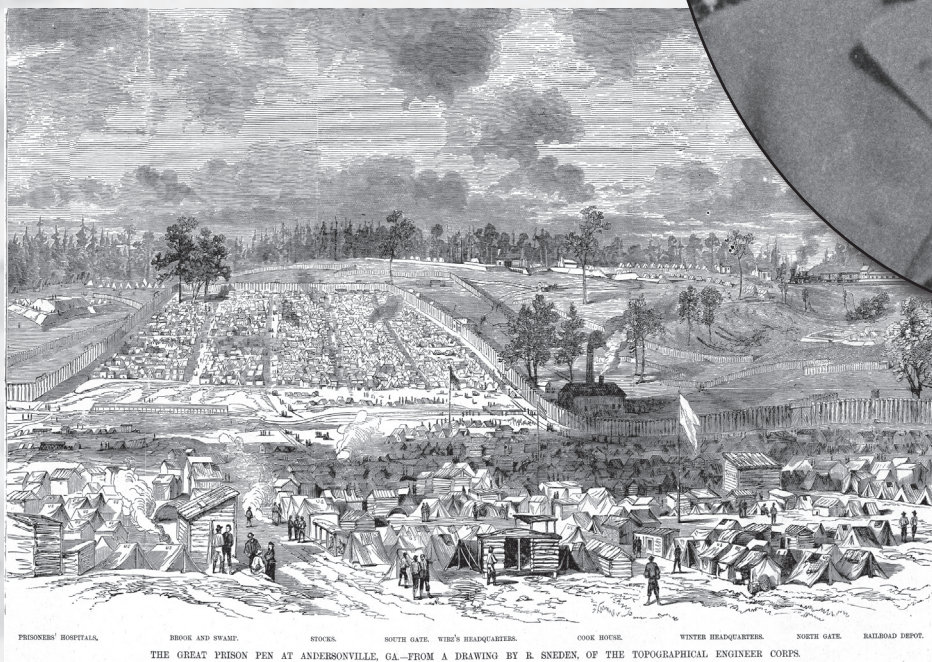
In the last push in April, 1865, White “won laurels for bravery” and was still on the firing line when the white flag went up at Appomattox. He was commissioned second lieutenant of Co. L, on April 14, 1865. According to a 1907 history “with the exception of the year he was held as a prisoner he took part in all the battles and skirmishes of his regiment and during his service was never ill or wounded and never missed a meal.” White was mustered out at Fort Leavenworth, Kansas, on June 23, 1865.



William White ca 1900

After the war he took up farming near Peach Belt in Ganges Township but after their daughters were grown, he and his wife, the former Caroline Martin of New Richmond, traded the farm for a house in Douglas, known as Kalamont, that had been built about the time of the Civil War by Thomas Gray, a Douglas merchant. Over the piano in the parlor he hung a large engraving of Andersonville Prison, in remembrance of the 11 months he had spent there.

By Kit Lane



Andersonville prison compound



Kalamont on Randolph St. in Douglas - now the home of Sally Erlandson

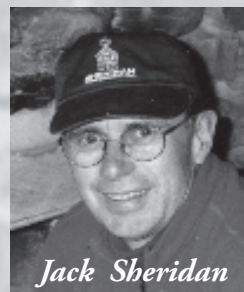
Remembering When feature is the creation of the Saugatuck-Douglas Historical Society. This weeks feature was written on a Civil War topic as part of this year's museum exhibit “*Lincoln's Ready-Made Soldiers: Saugatuck Area Men in the Civil War.*” The exhibit will open Saturday, May 29 and run through October. The SDHS museum is located on the west side of the Kalamazoo River at the foot of Mt. Baldhead, and is open daily, noon to 4 p.m. until Labor Day, then on fall weekends. There is no admission charge.

In addition, special presentations featuring various

historical topics will be presented at the museum on Tuesdays and Saturdays, 11 a.m. to noon, beginning June 21.

We welcome your comments on Remembering When. Call 269 857-7901, email us at sdhistory@accn.org or write to Box 617 Douglas, MI 49406. SDHS historical images can be seen on the SDHS web site at www.sdhistory.com and all historical photos are available for purchase in print sizes up to 12x17.

Our historical image database is growing through your contributions. We scan your old photos—you keep the originals—and we then provide you with a CD of your digitized images.



Jack Sheridan



Jim Schmichen