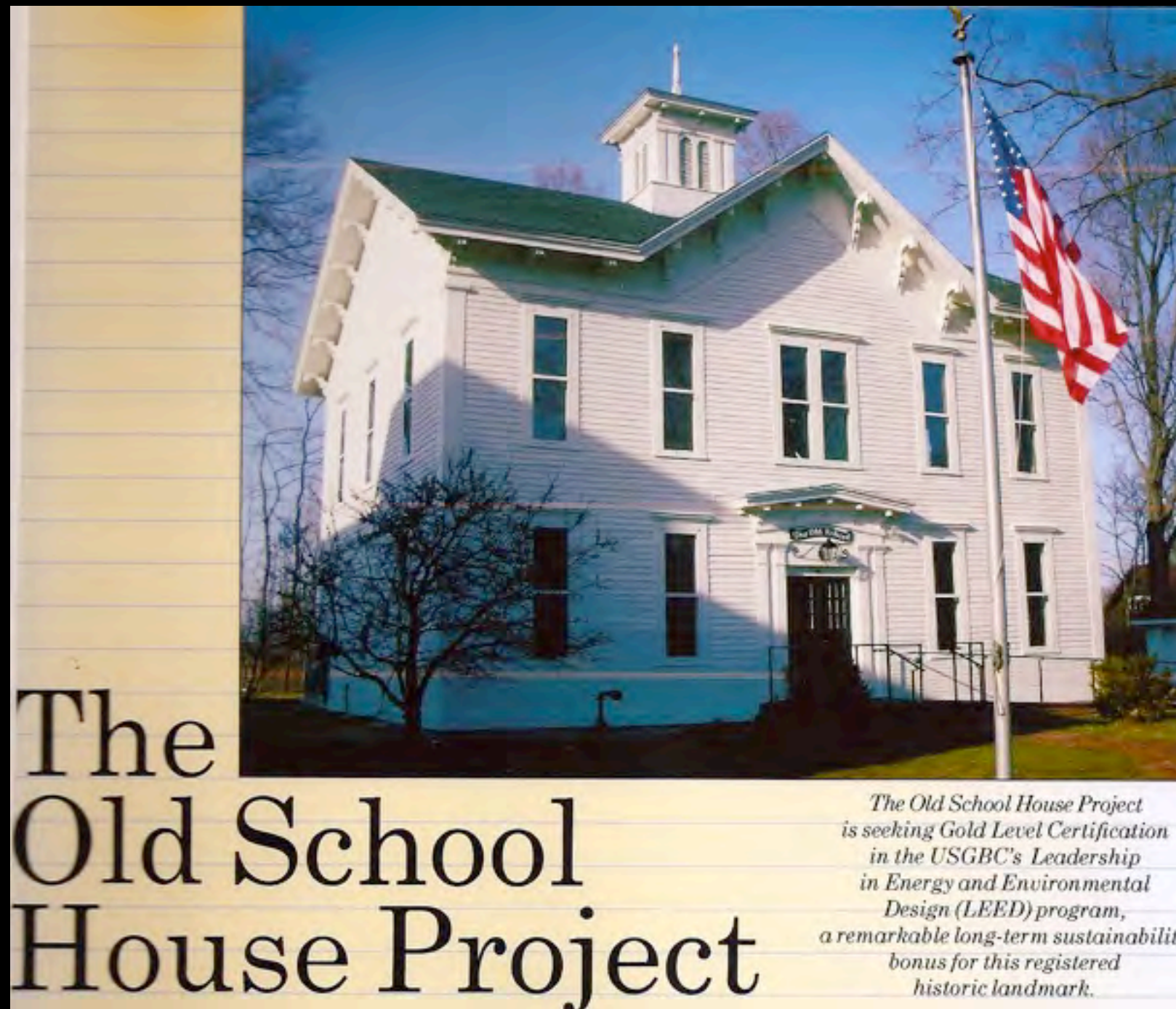


Welcome to Society Members & Friends
First public tour
OSH Garden & Back-In-Time Pathway

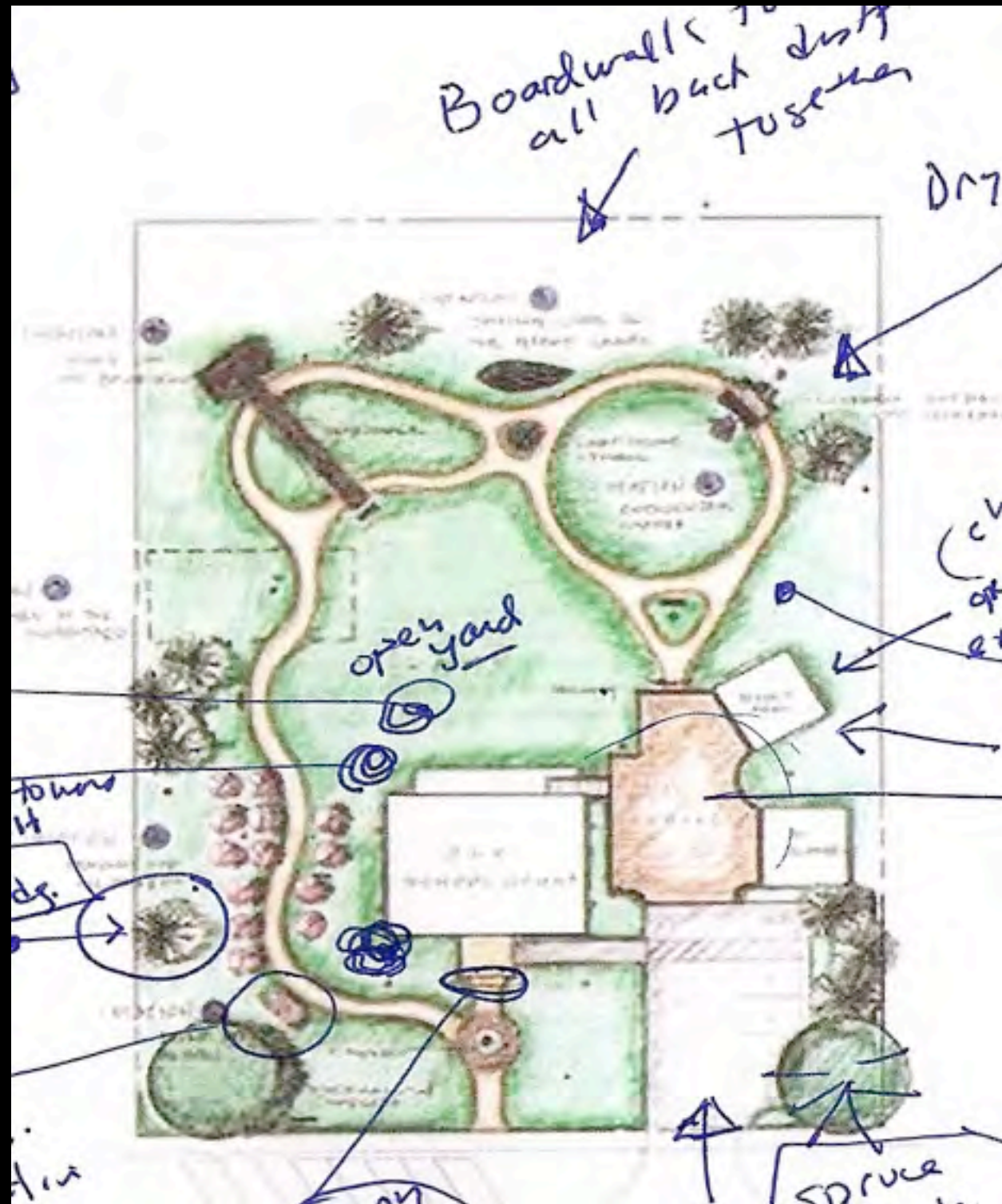


The Old School House
Garden & Back-In-Time Pathway
Merging Nature and History for the 21st
Century

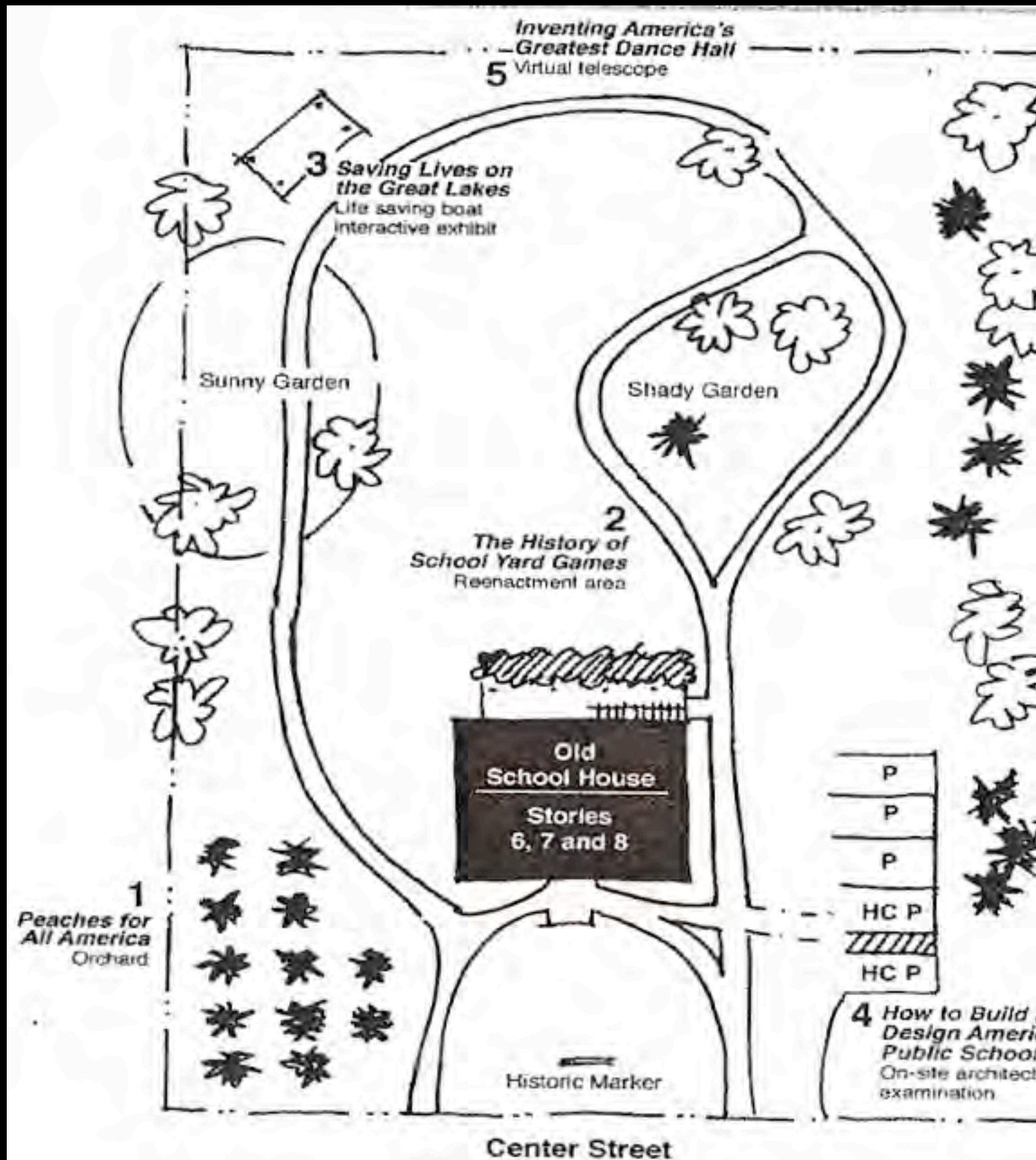
First, A Quick Look at how our “plan” evolved ?

...sometimes slow planning is better

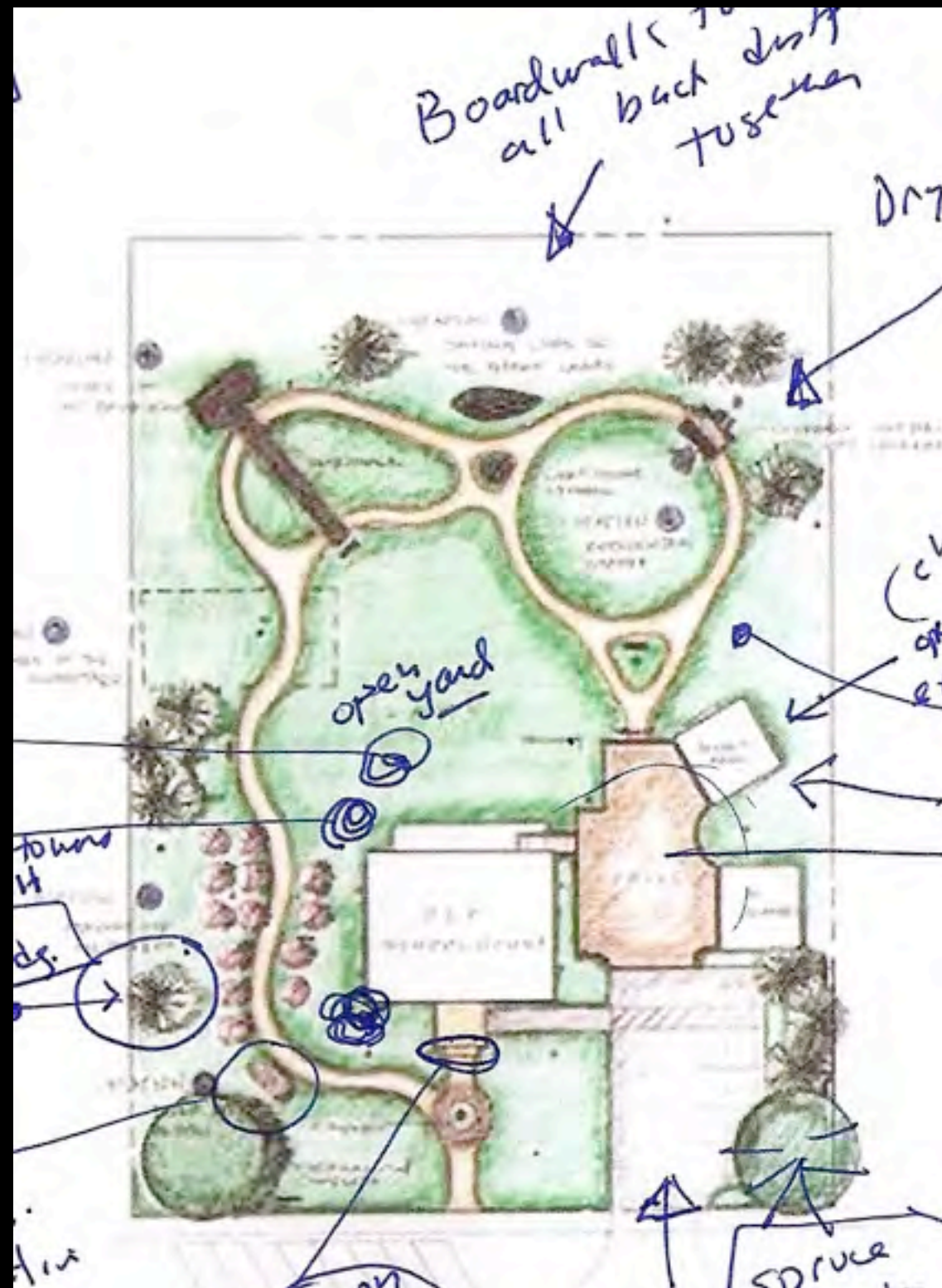
- *2007 Plan*
- *2008 Plan*
- *2009 Plan*



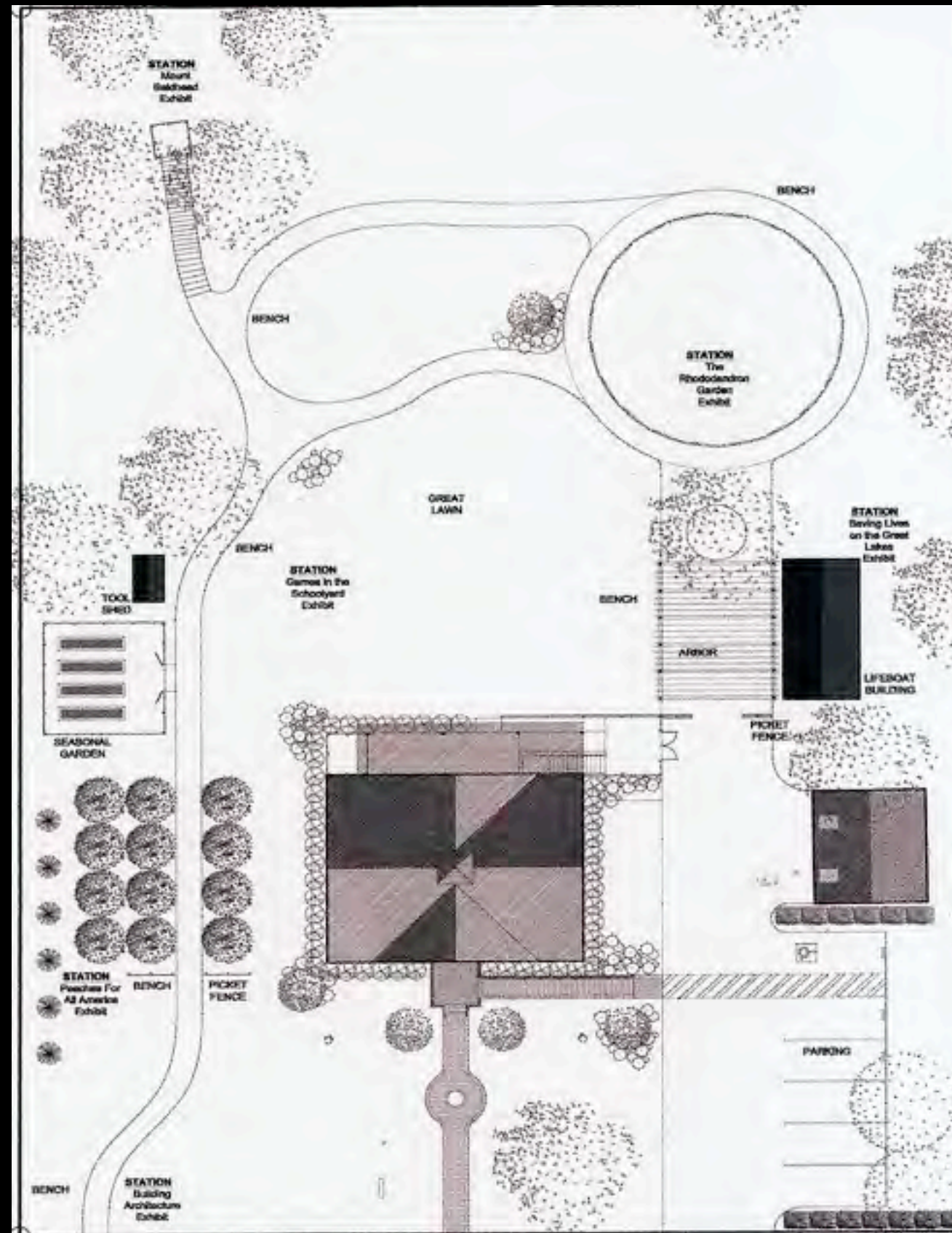
Garden Plan Number One



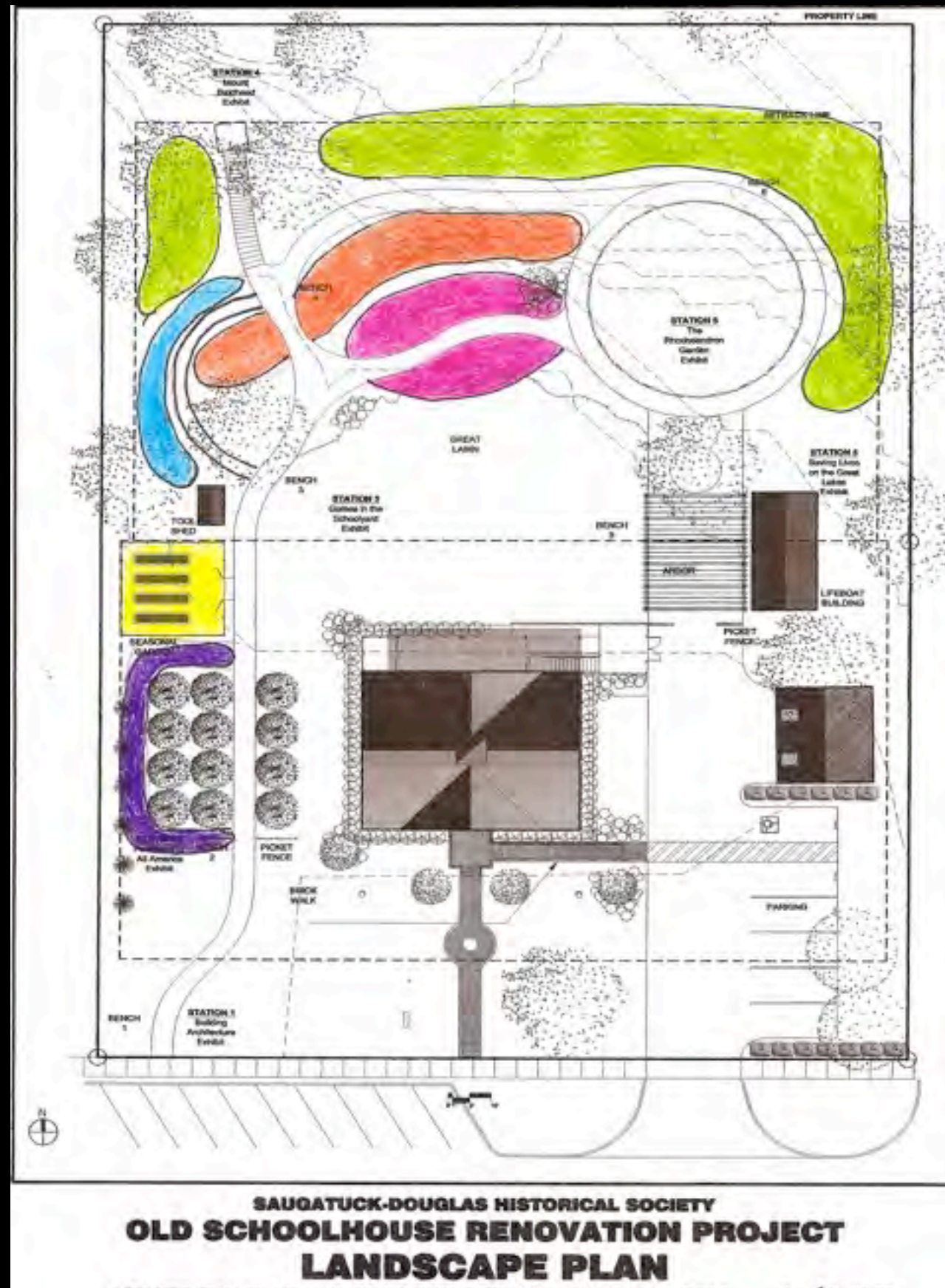
Garden Plan Number Two



Garden Plan Number Three



Garden Plan Number Four



The OSH Garden Group



- *Ruth Johnson*
- *John Migas*
- *Nic Wilkens*
- *Mike Economos*
- *Chuck Carlson*
- *Greg Raymond*
- *Kristi Mueller*
- *Brian Alexander*
- *Marcia Perry*
- *Jim Schmiechen*
- *Ex officio, Dottie Lyon*

Question?
*What do we do with one and a quarter acres
of land in the center of our historic village?*



Answer

Use the garden as a way for the community and visitors to engage with the history of the Douglas area. A “pathway” that has ‘story stops’ along the way.

*A great way to connect with our past
(and get funding!)*

Wow.

Been There, Done That

The Saugatuck-Douglas Pump House Museum

Garden Walkway Learning Stations

Installed, 1999



The Learning Stations

Over 40,000 visitors annually



We expanded the concept a bit and a Preserve America (National Park Service) start-up grant our original brilliance was re-crafted and ...we are on our way.



*We begin our “plan” with a big history lesson in mind:
Our history is famed by the interaction of people,
landscape and water.*

- *Singapore:
environmental
suicide*
- *Mt. Baldhead
Park: “Forever
young” at 301
steps*



History Lessons that Frame the Garden

It is all about people interacting with landscape and water

- *O. C. Simonds of Pier Cove was the first of many to experiment with new plants and reforestation to restore the lands that had been left barren by the clear-cutting of the forests. Lessons learned.*



History Lessons that Frame the Garden
It is all about people interacting with
landscape and water



History Lessons that Frame the Garden

It is all about people interacting with landscape and water

- *We are lucky that many of those who came before us built into rather than replacing the natural environment.*



History Lessons that Frame the Garden

*It is all about people interacting
with landscape and water*

*Home of
Duncan Byrd,
botanist and
foremost
authority on
azaleas in
Western
Michigan*



History Lessons that Frame the Garden



One of the lost chapters in our history is of the many professional landscapers and gardeners who built marvelous gardens and who experimented with many plant types.

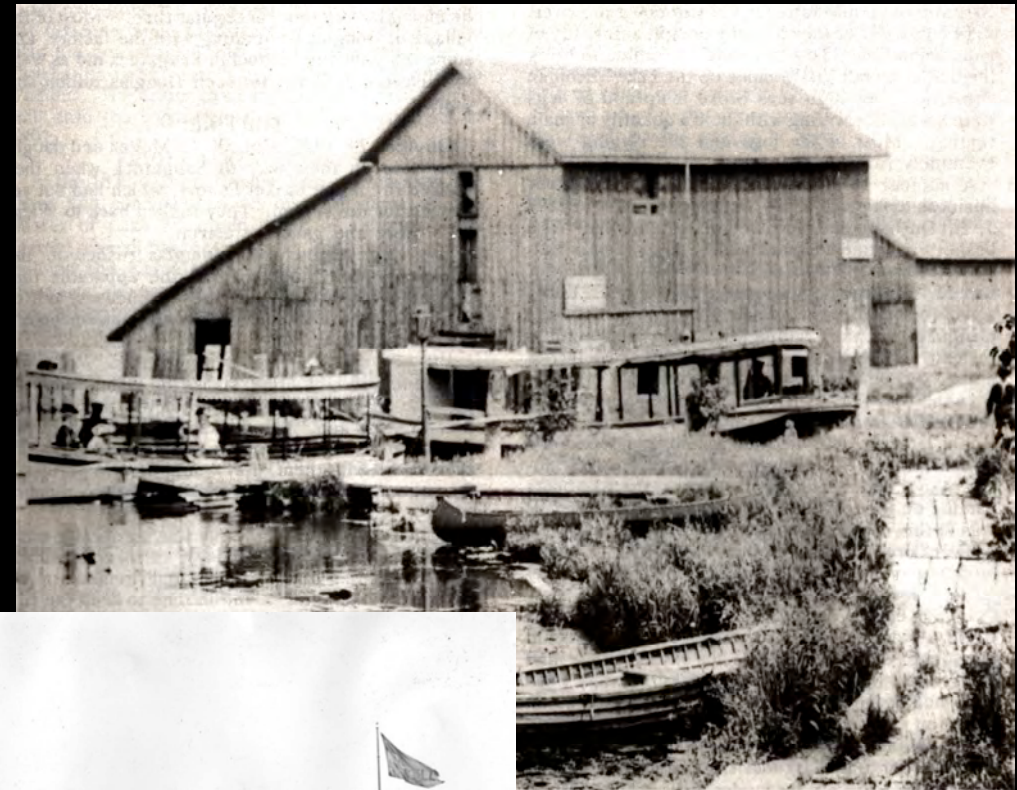


History Lessons that Frame the Garden

It is all about people interacting with landscape and water

- *Center Street,
Douglas connects
two historic Douglas
port sites: the Red
Dock to the west and
the Douglas docks to
the east.*

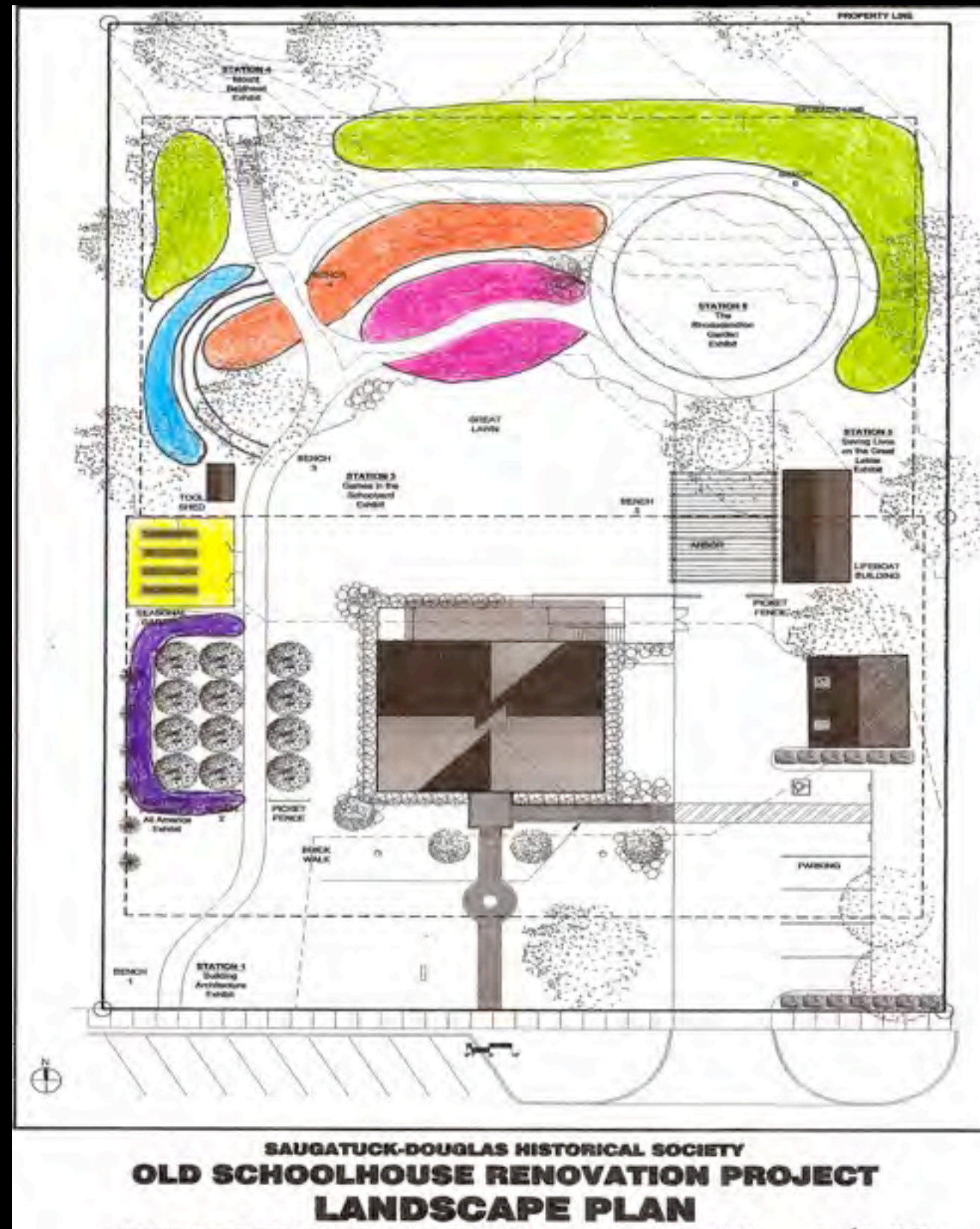
*What does the Society
have that can celebrate
this history?*



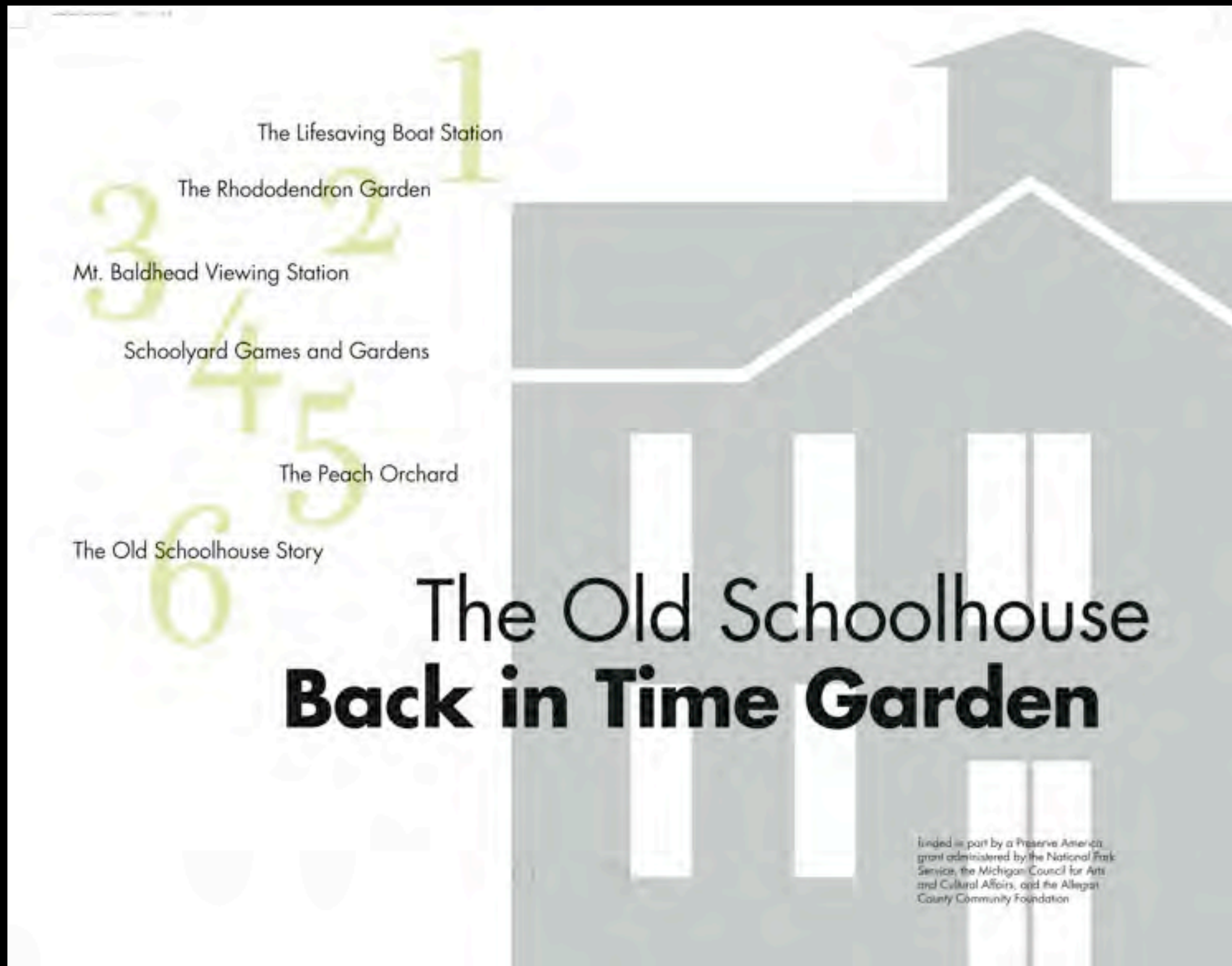
- *The Historical Society's recently resored--pre-Civil War "Francis Lifesaving Boat"-- one of two known still in existence--built by the same shipbuilder as built the battle ship "Monitor" of Civil war fame.*



Enough background. Let's now take a walk.



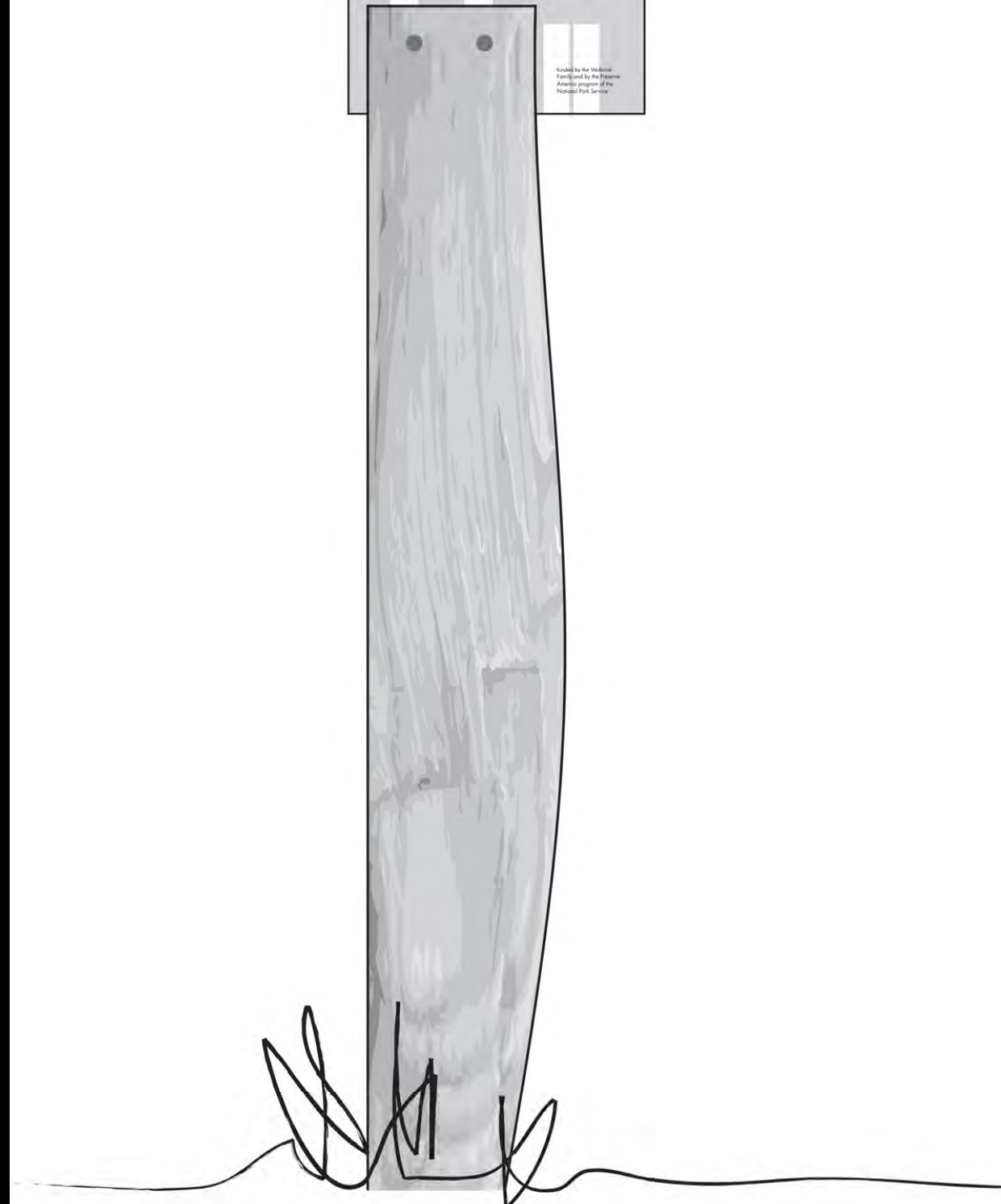
Entrance Sign



One of Michigan's tallest dunes and famous for its use by Native Americans for ceremonial purposes, Mt. Baldhead was devoid of vegetation and moving slowly eastward toward the Saugatuck harbor. Local residents began planting trees and grass to stop the blowing sand.

**The Mt. Baldhead
Challenge: How To Stop
a Moving Sand Dune**

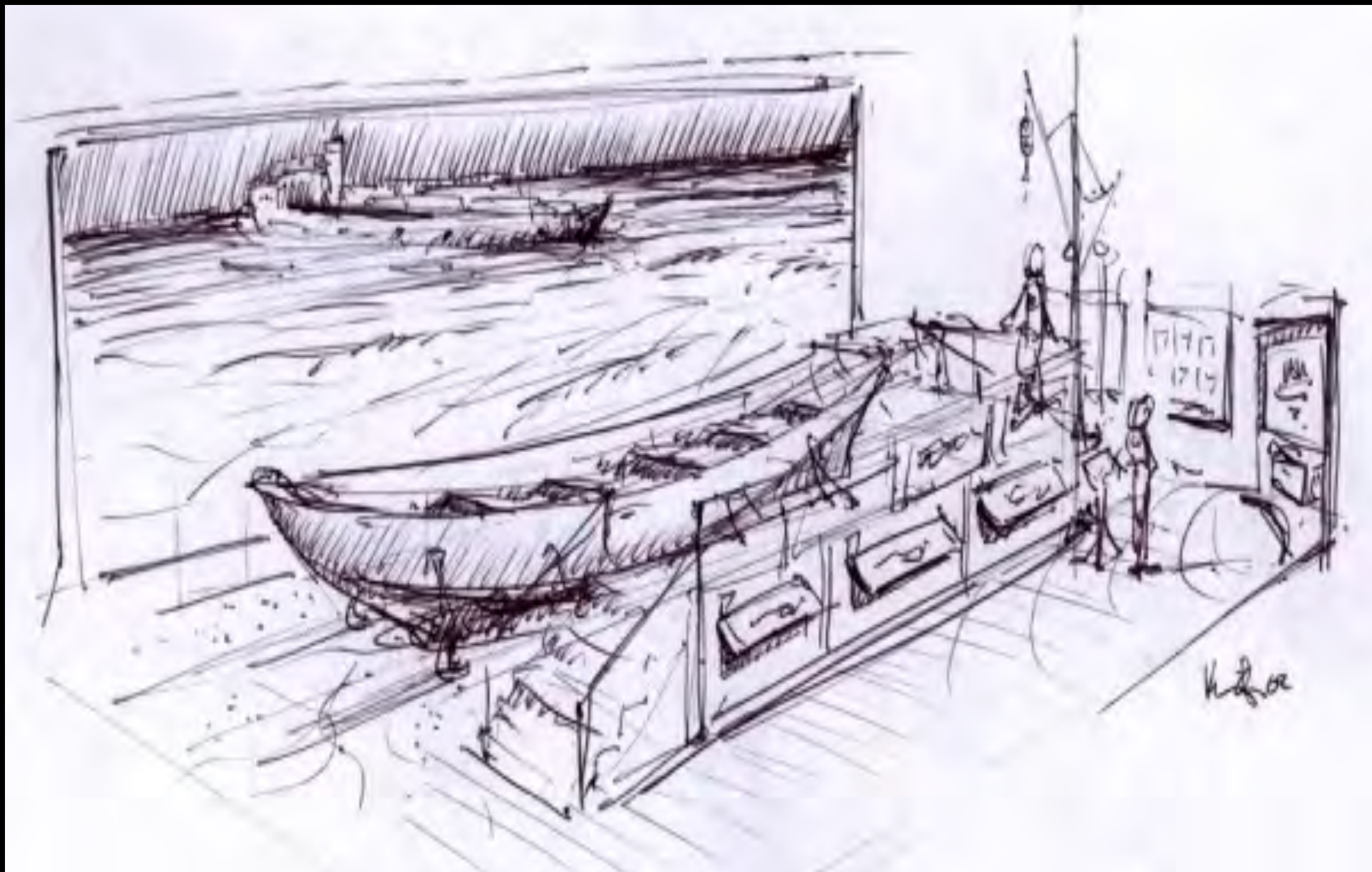
Created by the Wilderness
Funding and by the Preserve
America program of the
National Park Service



Arbor Entrance Concept



The Francis “Gallinipper” Pavilion



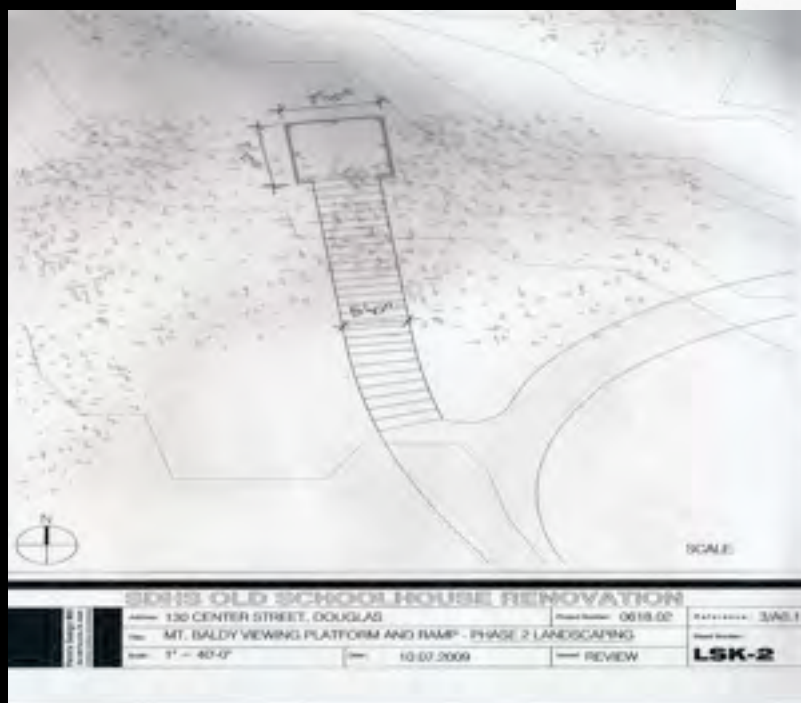
The Rhododendron & Azalea Garden



The Great Michigan Dune Story

Our Mt. Baldhead

Plan for Viewing Platform



The Schoolyard Garden

What sort of games have kids played here since 1867?



8th. gr. - 1941

The Peach Orchard



The Architect and Builder's Table

The Prairie Garden



Hummingbird and Butterfly Garden



Woodland Garden



Sensory Garden



Heirloom Garden



Natural Pollinator and Predator Habitat





French drain

Cistern

Irrigation

Garden furniture

Station markers

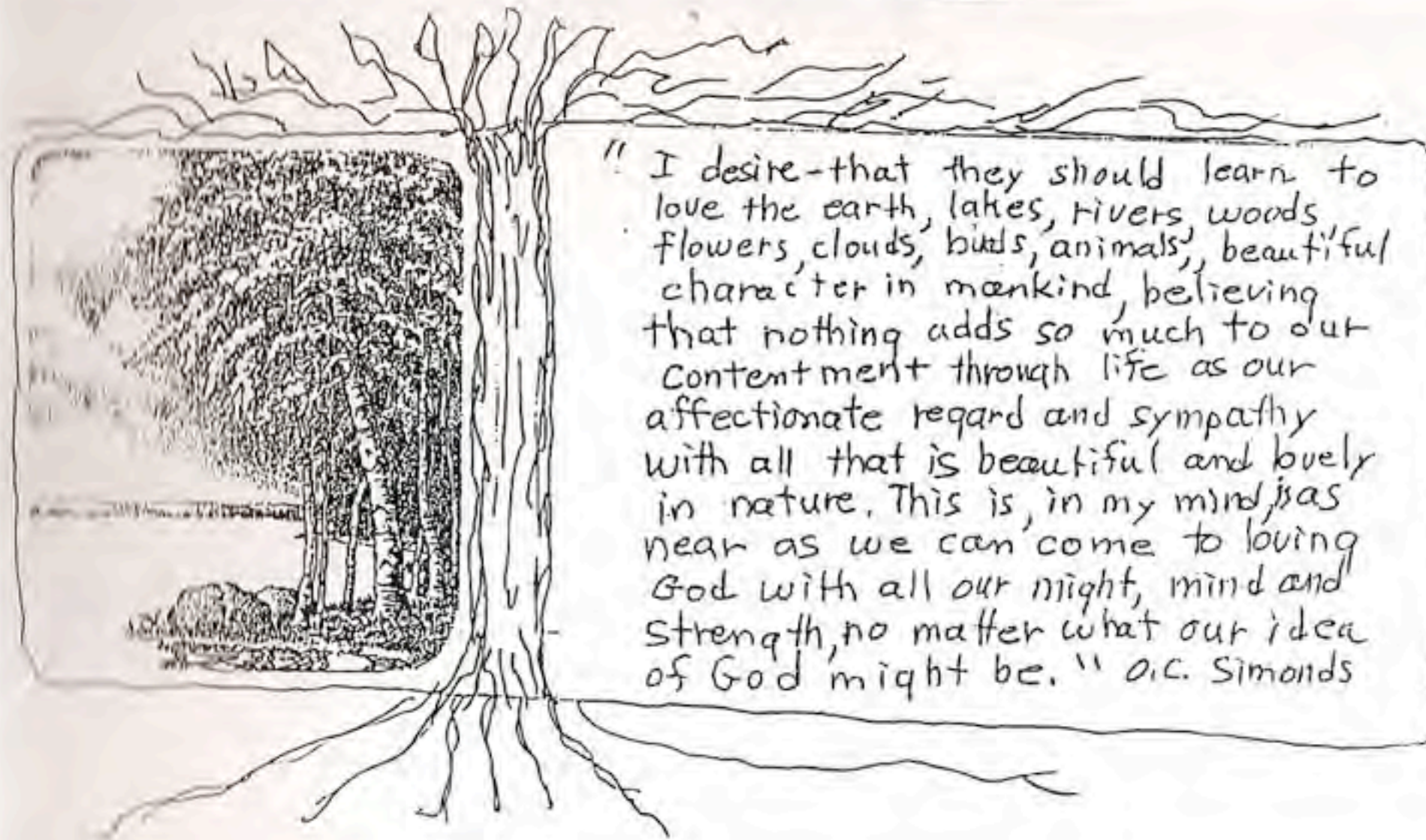
Porous materials

Audio tour

Native species

What can You do to Help?

- 1. Volunteer Days to help clean, prepare, and plant*
- 2. Fund one of the following:*
 - Adopt a tree*
 - Adopt a bench*
 - Adopt a garden / station*
- 3. Help get school and local garden club support*
- 4. Help write grants*
- 5. Help turn this presentation into a PR story*



That's All Folks

Thanks for Coming

Timeline

SPRING 2010

Presentation of plan to the City of Douglas Planning Commission

Drainage and soil borings

South garage removal and driveway installation (Budget under SDHS Board - phase 1)

Woodland Garden clean-up day: April 21 from 10-12 (help! help!)

Tree relocation (site) (Budget under SDHS Board funding needed: \$1100)

SUMMER 2010

Installation of cistern and pumps (funding needed)

Final grading (funding needed)

Installation of pathway (funding needed: \$13,300)

Installation of irrigation (funding needed: \$15,000)

FALL 2010

Plant large trees in Woodland Garden area (funding needed)