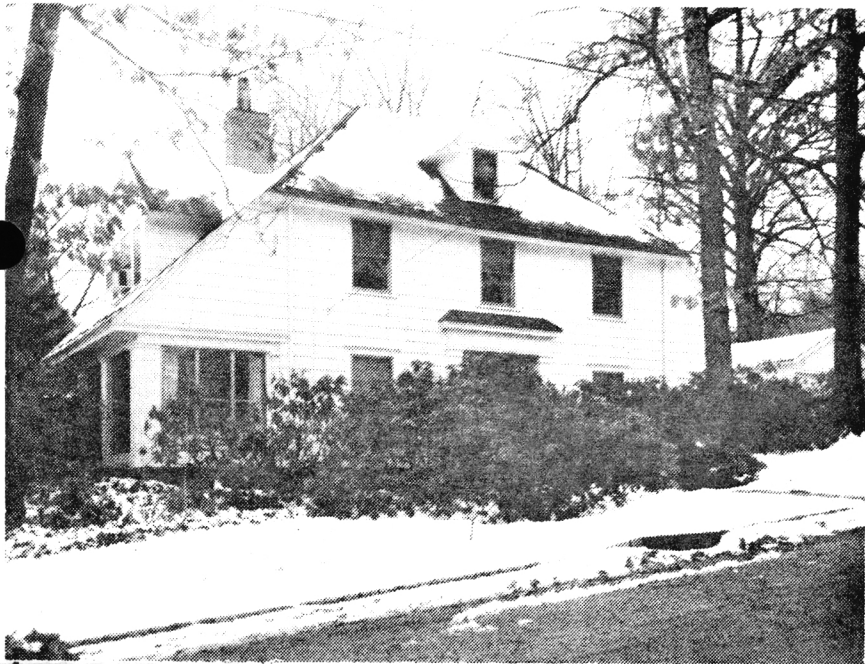


24080

393 Wyoming Ave., Mlbrn

\$98,000.

1F



24080 393 Wyoming Ave., Mlbrn

\$98,000.

1F

Entrance on Pine St.

Lot 150x58 Lot 12 Blk 204

col, fr, comp rf, all comb. ss/scrs, 220 VS, 100 amps

1st-4-ch, lr w/fp, dr, brk nk, kit, jal. Florida rm, lav

2nd-5-5 brs, 2 baths w/s.o.t.

3rd-1-br, 2 stge rms, o. stairs

Bsmt-rec. rm, toi, laund, out. ent.

Gas heat

2-car det. garage, paved drive

L-20.5 B-36.7 '78 Rate 3.02 Taxes \$1727.44 Poss: 60

days o.a.a. Key w/L.R., both offices. New termite policy

w/Western. Roomy col. in prestige area. Hse vacant but

furnished. Blt-in a/c in lr cools 1st flr. Close to

schools. Entrance & driveway on Pine St. Inclinator

chair to be removed. Fixture in ch will be replaced.

Contracts to be submitted to Howard Mellen (635-5039)

or, if no answer during day, contact Thomas Alvarez,

Esq. (456-3637). Wyoming GS, Mlbrn Jr & HS, St. Rose of

Lima Paro., Mlbrn RR Sta. Subject to errors & omissions.

LR:RCCo.763-0405 110018008/50018009 (6-60-40-o.a.a.)

Owners:Estate of Isabelle Mellen by Howard G. Mellen,

Raymond R. Mellen & Howard Savings Bank by Thomas D.

Alvarez, Trust Officer, co-executors, c/o L.R.

Conv.393 Wyoming Ave.,Mlbrn 10-2-2-lav 6 brs. \$98,000.

12/2/79 under contract by Stratton
 5/24/79 SOLD
 12/78 CONV MG
 \$85,000
 GFS