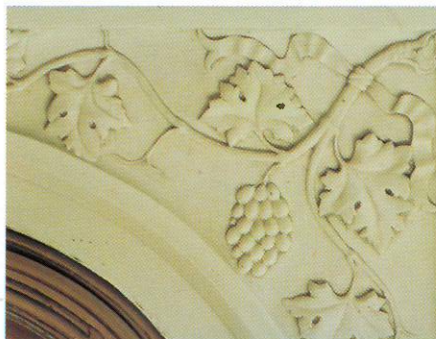




B



D



E



F

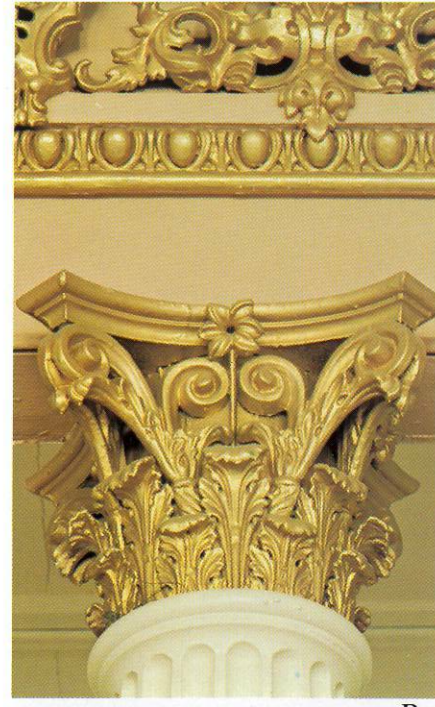


C

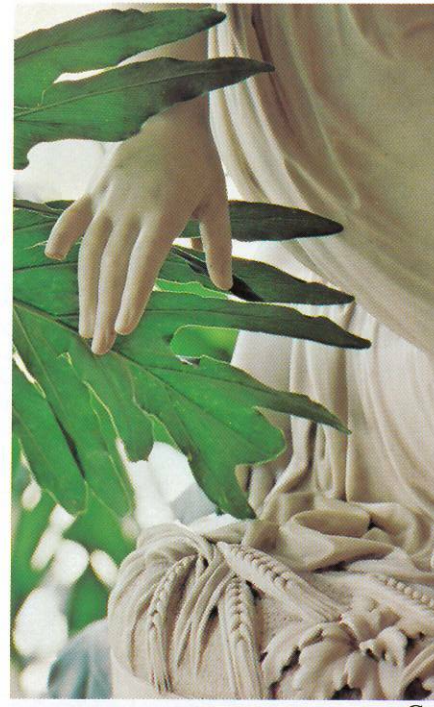


A

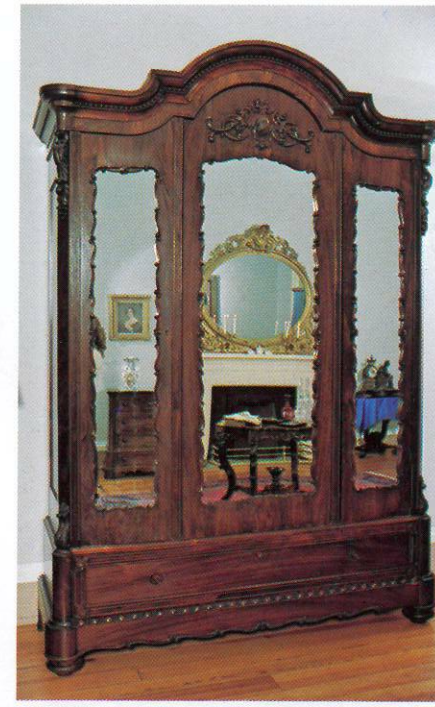
Belmont Mansion was noted for its finely furnished rooms. In Adelia's day, a copy of the painting, *Beatrice Cenci*, was in the tete-a-tete room where a similar copy is today (A). The square Chickering piano (B) is from the nineteenth century. In the grand salon are a mirror, an Acklen piece which has been restored, and a piano which was used to accompany Jenny Lind in her concert in Nashville in 1851 (C). A detail of one of the White Carrara marble fireplaces (D). The French mantel clock (E) is an Acklen item. The cluster-columned bed with canopy (F) is in the upstairs bedroom.



B



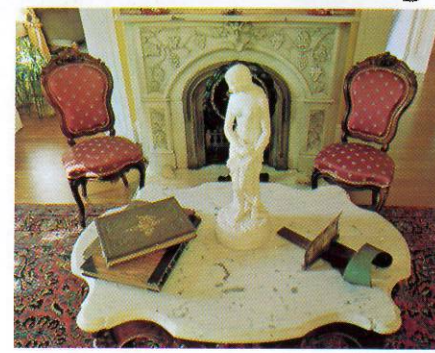
C



D



A



E

Corinthian columns with their beautiful capitals (A) stand majestically on one side of the grand salon. A detail of one of the capitals (B). A detail of *Ruth Gleaning*, a statue by Randolph Rogers (C). The wardrobe (D) in the upstairs bedroom is an Acklen piece. The tete-a-tete room (E).