

Ensuring the Legacy:

The Campaign for the Future of the Pierre Monteux School



July 2006



Contents

<i>Overview</i>	<i>1</i>
<i>The Challenge</i>	<i>2</i>
<i>Ensuring the Legacy: Addressing the Needs</i>	<i>3</i>
<i>Who Will Benefit?</i>	<i>5</i>
<i>Campaign Budget</i>	<i>6</i>
<i>How You Can Help</i>	<i>7</i>
<i>Chart of Gifts</i>	<i>8</i>
<i>Donor Recognition and Named Gift Opportunities</i>	<i>9</i>
<i>Monteux's Legacy</i>	<i>10</i>
<i>Projected Operating Income & Expenses</i>	<i>12</i>

Campaign Committee

Margaret P. Karns, Co-chair
Sullivan, Maine & Dayton, Ohio

Douglas C. Kimmel, Co-chair
Hancock, Maine

Bill Ceckler
Hancock, Maine

George Draper
Sorrento, Maine

Jean C. O'Meara
Hancock, Maine

Ronald W. Schwizer
Hancock, Maine

Ginia Davis Wexler
Sullivan, Maine &
Ft. Lauderdale, Florida

Kurt Wray
Hancock, Maine

Honorary Campaign Co-chairs

Michael Charry
New York, New York &
Southwest Harbor, Maine

Marc David
Sainte-Julie, Quebec

Neal Gittleman
Dayton, Ohio

“Conducting is not enough. I must create something. I am not a composer, so I will create fine young musicians.”

—Pierre Monteux

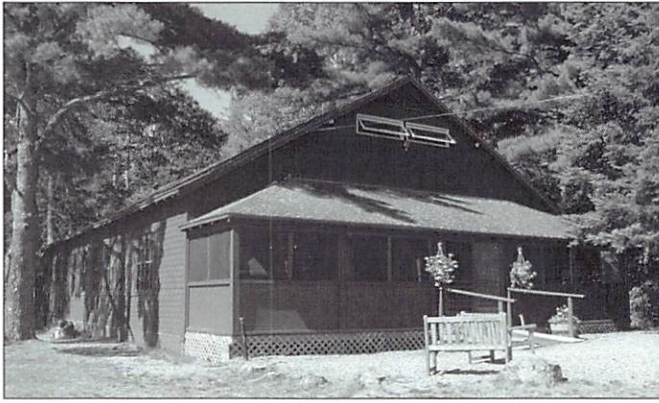


Overview

Nestled in the woods near the shore of Taunton Bay, the Pierre Monteux School has been bringing conductors and orchestra musicians together for intensive study and preparation for professional careers for 60 years. Founded by the legendary symphony conductor and Hancock resident Pierre Monteux, respectfully referred to as “Maître” (French for “maestro”), the School immerses students in a uniquely intimate and intense experience and also offers top quality concerts to the community at large.

After many years of use, the School’s facilities are showing their age, and the need to secure the long-term future of the School itself is also apparent. The school is entirely self-supported; the only legacy from Monteux was the property, the buildings, and the tradition. Accordingly, the trustees and “Friends of the Monteux School” have embarked on a Campaign for the Future of the Pierre Monteux School to preserve, renovate, repair, enhance, and provide the School with the physical facilities and other resources, including endowment, to assure that it can continue to serve future generations of conducting students and orchestra musicians from around the world. We invite you to join us in ensuring the legacy of our beloved “Maître.”





The Forest Studio before critical rehabilitation.



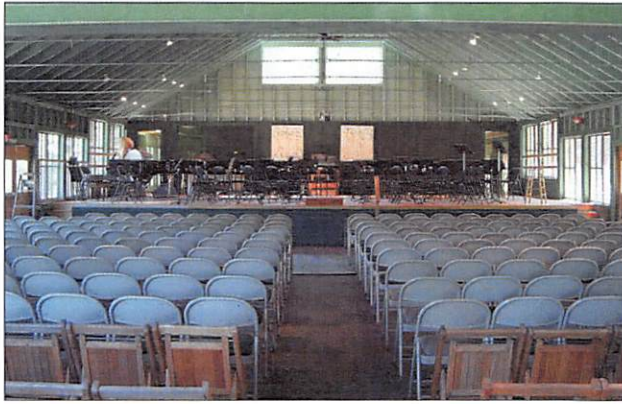
The Challenge

For many years, the School was a private venture of the Monteux family and accumulated no assets other than the land and buildings in Hancock. In fact, concerts were often used as fundraisers for local organizations such as the Jackson Laboratory in Bar Harbor and the Maine Coast Memorial Hospital in Ellsworth.

Currently, the School's income is derived solely from student fees, concert ticket sales, and donations by a relatively small number of friends and alumni. These cover operating costs and some scholarships, but there is little cushion for major repairs, program growth or inflation. There is no endowment and the School receives no royalties. Our funding has been adequate to cover expenses for our students and curriculum.

By the late 1990s, the Forest Studio was not able to meet the requirements of accessibility and comfort, the seating space could no longer accommodate the size of audiences at the School's concert series, and its foundation had deteriorated beyond repair. The 2002 Studio renovation project turned out to be just in the nick of time. This spurred the trustees to look at the School's other facilities and longer-term needs.

We can no longer defer paying attention to our facilities. The six cabins, cottage, and barn on the School campus are 30 (and more) years old and all are in need of repair and renovation. Our grand piano has suffered irreparable damage from inadequate protection from Maine climate changes and needs to be replaced. Additionally, as costs rise, we need greater capacity to offer scholarships to students from around the world who otherwise would be unable to attend the School.



Forest Studio renovations in progress: left - the Hall from the new porch; right - the new porch waiting for shingling.



Ensuring the Legacy : Addressing the Needs

The Pierre Monteux Memorial Foundation trustees have developed a plan for ensuring Pierre Monteux's legacy—the long-term viability of the school that he founded in 1943. Phase I addresses the completion of renovations and expansion of the Forest Studio, plus funding for scholarships, guests artists, and a new piano. Phase II includes repair and renovation of existing student housing, paying off the mortgage to purchase the Monteux home, and building an endowment.

Phase I – short-term needs:

The Forest Studio is the heart of the Monteux School, whose properties also include cabins for housing ten students, a barn that can house twelve students and also serves as a commons area with laundry, kitchen, and showers, a cottage that serves as a residence for three students, 20+ acres of rolling land in Hancock, and the Monteux house, known as Winterhaven. The Studio is used for rehearsals six days a week during the School's six week summer program; it is also used for concerts twice a week. Hence, it is essential that the Studio facilities meet the needs of students and concert audiences.

The Studio renovation is the first capital project we have undertaken. We have been able to retain most of the original building and the camp-style of the 56-year-old hall. So far, we have completed the new foundation, installed a new septic system and bathrooms, incorporated a new porch into the hall itself—augmenting the audience seating by almost 100, added fire exits and ramps to provide handicap access, and revamped the backstage area and music library. Remaining to be done are replacement of the roof and completion of the cedar shingling on the exterior of the building.



*Memorial Garden
in progress.*

Phase I also calls for completion and maintenance of a **memorial garden** encompassing some of the magnificent wooded area around the hall. Thanks to a generous gift from the Giroux family, work on that garden began in September 2003.

The other elements of Phase I relate to the School's mission of training young conductors and orchestra musicians:

- **Scholarship endowment** - In 2003, the Monteux School provided \$17,000 in scholarships to students. Given rising costs and students' needs, we need to ensure that we can increase this support in the future.
- **Artist-in-residence endowment** - Guest artists have become a key element of each summer's program, providing opportunities for conducting students to work with soloists and for master classes.
- **A new grand piano** - To have a quality instrument available for our students, we need to purchase a new piano and set aside funds to provide appropriate winter storage.

Phase II - medium to long-term needs:

- **Student housing** - The majority of students are housed in rented summer homes in the area. The other students are housed in rustic accommodations at the School. Appropriate and affordable rental housing has become increasingly difficult to secure. The medium-term need is to repair and renovate the existing facilities on the school grounds.
- **Paying off the mortgage to purchase the Monteux house** - As part of securing the Monteux legacy, the Foundation's trustees arranged to purchase the Monteux home known as Winterhaven from Nancie Monteux-Barendse. The purchase agreement includes the Monteux memorabilia and library of scores, recordings, and photographs.



Who Will Benefit?

The Monteux School is an important cultural asset. Since the School draws its sixty students from across the United States and many countries around the world, there is a ripple effect from what happens in Hancock, Maine to music-making in many parts of the world as benefits accrue to individual musicians and the ensembles of which they are a part. The number of Monteux School alumni now totals in the thousands.

Audiences at the eleven concerts each season number approximately 400 people per week, for a total of 2400 each season. Beginning in 2004, the School's facilities, including Forest Studio, were used by the new Harald Saeverud String Quartet Program established by violinist Trond Saeverud of Prospect Harbor. That program expects to serve 48 instrumentalists and will include public concerts.



*Music Director Michael Jinbo
conversing with student conductors.*



*Alumnus Neal Gittleman as Guest-Conductor-in-Residence
2003.*



Campaign Budget

Item	Amount
Repair, Renovation and Maintenance of School Facilities (Forest Studio, Cottage, Cabins, Barn, Winterhaven)	\$195,000
Scholarship Endowment *	\$400,000
Guest Artist Endowment **	\$100,000
Piano Purchase & Winter Storage	\$30,000
Memorial Garden Endowment ***	\$20,000
Winterhaven Mortgage	\$95,000
Fundraising Costs (Counsel & Administration)	\$15,000
Total	\$855,000

* Based on a goal of having \$20,000 available each year.

** Based on a goal of having \$5,000 available per year.

*** Based on a goal of having \$1,000 available each year.



Ensuring the Legacy:
The Campaign for the Future of the Pierre Monteux School

Campaign Budget and Progress to Date
September 2006

Item	Amount
Repair, Renovation and Maintenance of School Facilities (Forest Studio, Cottage, Cabins, Barn, Winterhaven)	\$195,000
Scholarship Endowment	\$400,000
Guest Artist Endowment	\$100,000
Refurbish Piano & Provide Winter Storage	\$30,000
Memorial Garden Endowment	\$20,000
Winterhaven Mortgage	\$95,000
Fundraising Costs (Counsel & Administration)	\$15,000
Total	\$855,000
Stephen & Tabitha King Foundation (for student housing)	\$25,000
Gifts & Pledges as of September 2006 (including \$15,000 for piano and \$20,000 for garden)	\$445,000
Balance to be Raised	\$385,000

"Sing into their faces with your heart!"

—Maestro Michael Jinbo



How You Can Help

Our goal is to raise \$855,000. With your help, we will ensure that the Pierre Monteux School's extraordinary resources for conductors, instrumentalists and concert-goers in our community will exist for generations to come. Pledges are welcome and may be paid over three years on a quarterly, semiannual or annual schedule.

Donors choosing to give a gift of securities, real estate, annuities, a bequest or a trust may realize significant tax benefits. These and other planned gift arrangements can be made by contacting Dr. Ronald Schwizer, Treasurer, at the address below.

Gifts should be made to the Pierre Monteux Memorial Foundation, recognized by the Internal Revenue Service as a nonprofit, 501(c)(3) charitable organization. All gifts to the Pierre Monteux Memorial Foundation are tax deductible to the full extent allowed by law.

For more information, contact:

Dr. Ronald Schwizer, Treasurer
PO Box 457
Hancock, ME 04640
207-422-8267
drmons@acadia.net



Chart of Gifts

For an \$855,000 Campaign

Number of Gifts	Gift Amount	Dollars This Level	Cumulative Dollars
1	\$250,000	\$250,000	\$250,000
1	\$150,000	\$150,000	\$400,000
1	\$100,000	\$100,000	\$500,000
2	\$50,000	\$100,000	\$600,000
3	\$25,000	\$75,000	\$675,000
6	\$10,000	\$60,000	\$735,000
9	\$5,000	\$45,000	\$780,000
12	\$2,500	\$30,000	\$810,000
18	\$1,000	\$18,000	\$828,000
20	\$500	\$10,000	\$838,000
24	\$250	\$6,000	\$844,000
60	\$100	\$6,000	\$850,000
100	less than \$100	\$5,000	\$855,000
257			\$855,000



Donor Recognition and Named Gift Opportunities

A Donor Wall to recognize lead donors to the Campaign for the Future of the Monteux School will be located in the Forest Studio. In addition, we are offering the following named gift opportunities.

<i>Audience Seating Expansion</i>	<i>\$50,000</i>	
<i>Student Conductor Scholarship</i>	<i>\$50,000 each</i>	
<i>Artist-in-Residence</i>	<i>\$50,000 each</i>	
<i>Baby Grand Piano</i>	<i>\$30,000</i>	<i>Taken</i>
<i>Orchestra Musician Scholarship</i>	<i>\$20,000 each</i>	
<i>Memorial Garden</i>	<i>\$20,000</i>	<i>Taken</i>
<i>Barn Renovation</i>	<i>\$15,000</i>	
<i>Music Library</i>	<i>\$10,000</i>	
<i>Instrument Storage Room</i>	<i>\$10,000</i>	
<i>Cottage Renovation</i>	<i>\$10,000</i>	
<i>Cabin Kitchen Renovation</i>	<i>\$10,000</i>	
<i>Guest Artist Dressing Room</i>	<i>\$5,000</i>	
<i>Cabin Renovations (3 more available)</i>	<i>\$5,000 each</i>	<i>2 Taken</i>
<i>Percussion Instruments (3 available)</i>	<i>\$5,000 each</i>	

*Pierre Monteux
Memorial Foundation
Trustees*

Nancie Monteux-Barendse,
President Emeritus
Hancock, Maine

Ginia Davis Wexler,
President
Sullivan, Maine &
Ft. Lauderdale, Florida

Robert Taylor,
Vice-president
Oberlin, Ohio

Ronald W. Schwizer,
Treasurer
Hancock, Maine

Elaine Randall, *Secretary*
Corea, Maine

Stephen Crabtree
Hancock, Maine

Rev. Philip E. Devenish
Hancock, Maine

Bruce C. Mallonee
Bangor, Maine

Jean C. O'Meara
Hancock, Maine

Mary Purslow
Sorrento, Maine

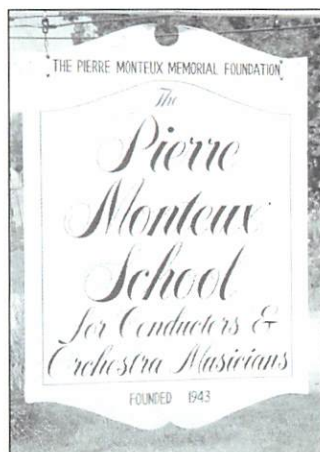
Philip Standel
Lamoine, Maine

Katharine Thompson
Sullivan, Maine

Kurt Wray
Hancock, Maine

Claude Monteux, *Emeritus*
Lamoine, Maine &
San Diego, California

Michael Jinbo, *Ex officio*
Augusta, Maine



Monteux's Legacy

The Pierre Monteux School for Conductors and Orchestra Musicians was founded in 1943 by the French-born conductor Pierre Monteux (1875-1964), who premiered many masterworks of the 20th century, including Ravel's *Daphnis and Chloe*, Debussy's *Jeux*, and Stravinsky's *The Rite of Spring* and *Petrushka*. Over the course of his long and distinguished career, Monteux held directorships of Diaghilev's *Ballets Russes*, the Metropolitan Opera, the Boston Symphony, the Amsterdam Concertgebouw, the Orchestre Symphonique de Paris (which he formed), the San Francisco Symphony, and the London Symphony among others. He became an American citizen in 1942 and with his wife, Doris Hodgkins Monteux (1894-1984), he founded a summer school for conductors and orchestra musicians in Hancock, Maine, Doris' childhood home. Musicians came from all over the world to Hancock to study with their beloved "Maître."

After Monteux's death in 1964, Doris Monteux named Charles Bruck (1911-1995) the second Music Director of the school. As Monteux's first student in Paris, Bruck enjoyed a close friendship with him and was uniquely qualified to carry on the traditions of the school. He served as Music Director and master teacher for over twenty-five years, becoming one of the great conducting teachers of his generation. In 1995, Bruck's long-time student and associate, Michael Jinbo, was named the school's third Music Director. Jinbo's teaching, consistently praised by colleagues and students, continues the tradition established by Monteux and Bruck. Nancie Monteux-Barendse, Monteux's daughter, serves as President Emeritus of the Board of Trustees. Distinguished alumni serve on the Honorary Advisory Board.

*Pierre Monteux and
former student,
pianist Vera Franceschi.*



In recent years, the Pierre Monteux School has served approximately 60 students each summer in its six-week intensive program. Approximately 20 of these are conducting students. All are expected to be full-time members of the orchestra, unlike many other summer programs. The program includes six Sunday concerts open to the public and five Wednesday evening chamber concerts. The School offers an unrivalled opportunity to learn a large and varied repertoire and for conductors to receive weekly rehearsal podium time and to perform in the Sunday concerts. This unique aspect enables conductors to learn from both sides of the podium. Students have come from all over the United States and from countries on four continents. Among the thousands of conductors and instrumentalists who have attended the Monteux School over its 60-year history are many distinguished alumni.



Pierre Monteux and Charles Bruck

Honorary Advisory Board

Michael Charrý



Enrique Diemecke



Leon Fleisher



Neal Gittleman



Erich Kunzel



Lorin Maazel



Andre Previn



Hugh Wolff



David Zinman



Pierre Monteux Memorial Foundation, Inc.

*Projected Operating Income & Expenses
FY Ending August 31, 2005*

INCOME		
Annual Giving	\$60,000	
Student Fees	\$60,000	
Concert Admissions	\$18,000	
Facilities Rental	\$2,000	
Grants	\$5,000	
TOTAL PROJECTED INCOME		\$145,000
EXPENDITURES		
Salaries & Stipends	\$40,000	
Mortgage & Loan Payments	\$15,000	
Insurance	\$6,000	
Maintenance	\$7,000	
Utilities	\$4,000	
Music Purchase/Rental	\$5,000	
Instrument Purchase/Rental/Repair	\$5,000	
Off-campus Housing	\$25,000	
Shipping & Postage	\$2,000	
Banking/Credit Card Fees	\$2,000	
Guest Artists-in-Residence	\$5,000	
Printing/Office Supplies	\$5,000	
Scholarships	\$15,000	
Publicity	\$2,000	
Professional Fees	\$7,000	
TOTAL PROJECTED EXPENDITURES		\$145,000

The Pierre Monteux Memorial Foundation, Inc. is a 501(c)3 non-profit charitable organization registered in the State of Maine.

Prepared by

Gary Friedman & Associates. 

BAR HARBOR • BANGOR

www.garyfriedmann.com