

# Indians Enjoyed Life Along River

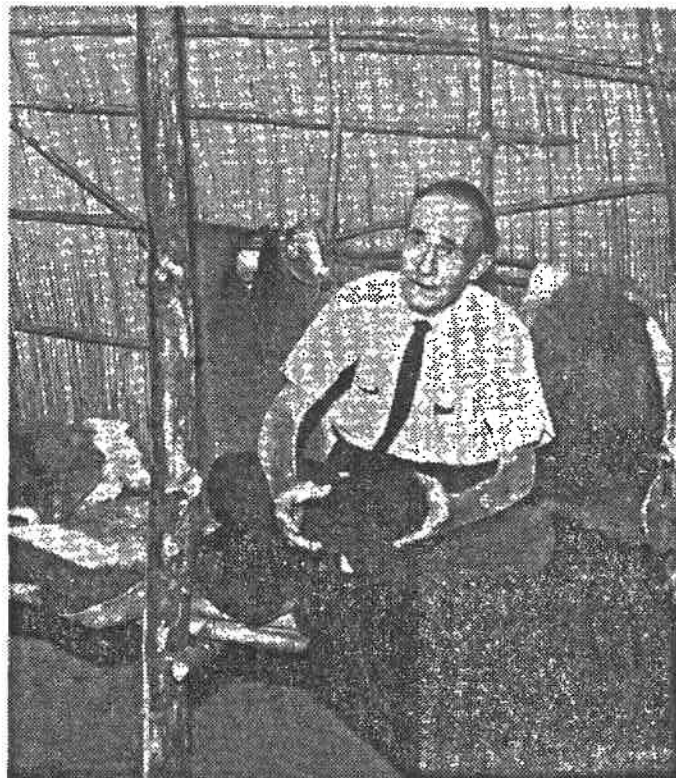
(Continued From Preceding Page.)  
and the Smithsonian Institution.

The site has been given a radiocarbon date of 10,493 years, plus or minus 1,500 years, or about 8500 B. C.

In 1916 Shippee was fishing on Fishing river near Excelsior Springs and the fish refused to be co-operative. Tiring of the sport, Shippee explored a hilltop later destroyed by quarrying. There he found seven projectile points and a three-quarter grooved ax that could not be identified at the time.

Over the following 15 years, distinctive artifacts were found on several other hilltop sites. In 1946 the points were recognized nationally as being of a local complex of a widespread early Indian culture. The name Nebo Hill was chosen because it was easily remembered and was the source of several points.

**FURTHER EXPLORATION** has located many Nebo Hill sites in Northwest Missouri, where the environment seemingly appealed to the early hunters. While roasting hearths of fire-reddened limestone have been found, no charcoal was obtained for dating. Comparison with artifacts of dated sites on the High Plains give an approx-



Indians slept on beds made of willow withes, James Mett Shippee, authority on early Indian life, explains as he sits on a replica of such a bed in the Kansas City Museum. The display is inside a simulated Osage hut of the 1800s.

imate age of 7,000 years, or about 5000 B. C.

The Nebo Hill people, who hunted through the Kansas City area, were a pre-pottery

group using a little horticulture. Some digging tools have been found, as well as stone axes, scraping tools and campsites.

In Jackson, Clay and Platte Counties, Shippee and others have found manos, pestles and mortars which indicate the milling of grass seeds, acorns and probably animal bones, as well as large projectile points used for big game. Stone hearths, found two miles south of Independence, evidently were used for roasting meat over heated stones. Two of their spear points are being shown in the Missouri exhibit at the World's fair.

**INDIANS** who lived in a later period, approximately from 1000 B. C. to 5000 B. C., have been designated Late Archaic. A primitive nomadic people, they lived mostly on deer and other big game. They used improved projectile points and scraping tools.

About the same time the Roman legions were sweeping across Europe and the Near East, and Christ was giving his Sermon on the Mount, there was a thriving Indian village on the Renner farm in Platte County where Line

Greely enters the wood plain. These were Hopewell Indians, evidently a more advanced group than their Archaic predecessors. They lived together in villages, hunted the white-tailed deer, and raised corn and beans. Presumably game was abundant as when the white man first traveled the country. The Hopewell In-

dians were numerous in the Kansas City area until about 200 A. D.

How do we know? Carbon dating from the University of Michigan from charcoal from a campfire gives an approximate age of 8 A. D.

**THE HOPEWELLS**, who belonged to the Woodland cultures, were pottery-makers. They began to fashion clay into pottery for food storage and cooking about 1,000 years before Christ. At first it was crude. Without pottery wheels, the Indians shaped the clay by hand and a wooden paddle wrapped with cord, which left its marks on the surface.

The clay was tempered by mixing it with sand, pebbles or shells. Pots may have been used for cooking with boiling water. This was done by dropping heated rocks into the vessel—a method observed in historic times by white men.

Each century saw a gradual improvement in weapons, tools and utensils. Man still was using spears for hunting. He had not yet developed the bow and arrow. Approximate dates of the Early Woodland Culture were from 1,000 B. C. to 300 B. C.

Shippee first discovered the Hopewell village on the Renner farm in 1920. As a result of his correspondence with the Smithsonian Institution, Dr. Waldo R. Wedel did extensive excavation work there in 1937 and 1938.

**THE VILLAGE** extended over five and one-half to six acres. An area 15 by 20 yards was excavated in 1954 by numerous volunteers under the direction of Leo J. Roedl, executive director of the Kansas City Pioneers, and James H. Howard. Dr. Carl H. Chapman, University of Missouri, was adviser.

The Hopewell Indians knew something about agriculture. There were several beans that resembled pintos, some charred maize, corn cobs the size of one's finger, and a pipestem. Obviously, the Indians smoked tobacco long before Sir Walter Raleigh transported the habit to Europe.

The village was typical of all Indian habitation sites. The people apparently had lived in the midst of their trash accumulations, which seemed to have covered the ground and filled the abandoned storage pits where food and other valuables had been cached.

Fourteen pits were excavated. Animal bones were sent to university zoologists for identification, and a careful

This was a strong indication that deer were abundant and formed the main entree on the Indian menus.

**SEVERAL PIECES** of copper ornaments, presumably traded from the Great Lakes region, as well as 1,525 pieces of pottery or shards, also were excavated. There were skull fragments of two young Indians.

Until the Renner site was excavated, officials of the Smithsonian Institution had not believed the Hopewell culture extended west of the Mississippi river. Later, similar artifacts were found in Southeastern Nebraska and Eastern Kansas.

Archaeologists believe that the Hopewell people may have intermarried with more primitive tribes and gradually lost their identity as a distinct group.

In the first few centuries of the Christian Era some ingenious Indian developed the bow and arrow. The Late Woodland people, possibly from 600 A. D. to 800 A. D., reverted to hunters. The pottery deteriorated. Along with the spear points and scrapers, tiny arrow heads began to appear. Many small campsites have been found in this region.

A **STRONG** new culture thrust its way into the Kansas City area around 800 A. D. Known as the Middle Mississippian, these Indians also were Mound Builders. The largest known one is at Cahokia, near St. Louis, where the Indians erected an earthen mound 100 feet high which covered 17 acres.

The Indians with their distinctive projectile points and pottery were numerous along tributaries of the Missouri river in Platte County. Radiocarbon dates show 889 A. D. on the remains of an Indian house at Parkville; 1260 A. D. on another house eight miles northwest of Kansas City, and 1302 A. D. on a burial mound three miles west of Parkville.

These Indians, in time, apparently blended with another complex and probably are the ancestors of the historic Indian tribes of this region—the Missouri, Kansas, Iowa, Ota, Osage and Omaha tribes.

**AFTER THE INFLUX** of hunters and trappers in the late 1600's — vanguard of the white man—the Indians began to use metal for arrowheads, and they began to use glass beads of European manufacture and shell beads which might have originated in the South Seas.

Wild game probably was so

## JUMBLE — that scrambled word game

Unscramble these six Jumbles, one letter to each square, to form six ordinary words.

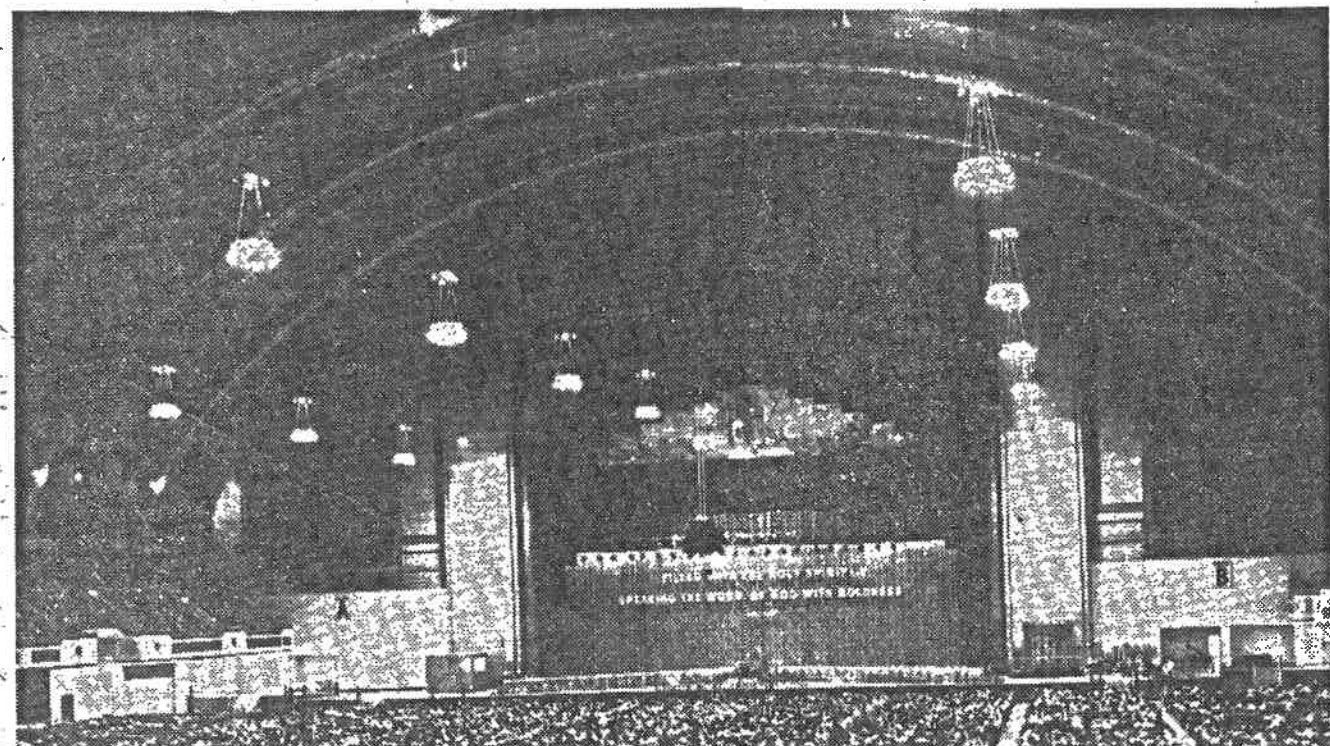
KATINE	□	□	□	□	□
EMBLUH	□	□	□	□	□
CRASAF	□	□	□	□	□
RANTIM	□	□	□	□	□
CHETIN	□	□	□	□	□
VIRQUE	□	□	□	□	□
ANSWER	□	□	□	□	□



Now arrange the circled letters to form the surprise answer, as suggested by the above cartoon.

(Upside-down Answer on This Page)

## No Curfew in Atlantic City



of the river is fine interspersed with Praries, in which immense herds of deer is seen. On the banks of the river we observe a number of Deer watering and feeding on the young willow."

In 1818, according to Wedel, a Captain Martin spent the winter just above Leavenworth with three companies of riflemen. Lacking rations, the men had to support themselves by hunting. By the following spring, according to one account, "between two and three thousand deer, besides great quantities of bears, turkeys, etc., had been taken."

**IN THE EARLY DAYS** of Kansas City there were numerous sites of prehistoric villages, camps and workshops, Shippee reports.

On a gently sloping plowed

field on what is now Ninth street to Twelfth street near the Paseo small boys found many flint arrowheads from a one-time Indian workshop.

One village apparently was on the present site of The Star.

Others have been identified at Twelfth and Woodland, Thirteenth and Vine, Ninth and Kensington, the Gladstone school and Hardesty and Cliff Drive.

Thus the probably proved periods of Indian life in the U. S.—from Kansas City's elephant hunters to the warriors who destroyed Custer—extend over 12,000 years. Most of the white men now here are, by comparison, newcomers who arrived on a relatively recent yesterday—and that includes even Leif Ericsson and the Puritans.

## CAMERA Angles

**HAPPINESS** is a youngster when school is out...

Especially when scooting around an amusement park, ogling animals at the zoo, fishing lazily, with dad or exploring a park on a picnic.

It's times like these when picture-taking of children is at its best. Their faces just naturally mirror the fun they're having, rewarding you with spontaneous, unposed pictures that literally capture moments

stant's notice. Don't set up a lot of posed shots—they tend to take the edge of enthusiasm and spontaneity off children's behavior.

Let them act naturally and don't fret if you miss a scene. Good pictures of active children are like the old saw—if you miss one, wait a minute and another one will come along.

