

# Post Offices

---

## City of Milton and its Crossroad Communities

May 10, 2022

Connie Mashburn

Ed Malowney

Barbara Latham

# “Crossroad Community”

- Where roads met or intersected
- Where roads crossed a river – ford, ferry, or bridge
- As commerce and communication needs grew, “Crossroad Communities” built Post Offices
- The Post Offices were typically located in a store, pub, or in the Postmaster’s home

# U.S. Post Office History

- 1775 -- Ben Franklin: 1<sup>st</sup> Postmaster General
- 1847 -- U.S. Postage Stamps Issued
- 1861-1865 -- Civil War Postal Services
- 1865- 1870s -- Reconstruction
- 1880 to 1890's -- Growth of local Post Offices

# Impact of Civil War

- Civil War smuggling letters
- Prisoner exchange
- John H. Reagan of Texas became Postmaster General - recruited northern postmasters
- One stamp – used as money
- The Reconstruction Era – difficult times

# U.S. Post Office History

- 1902 to 1905 Rural Free Delivery (RFD)
- 1918 - Scheduled airmail service began
- 1927 - International airmail began
- 1963 - ZIP Code implemented

# Overview: Post Office Documents

- County Post Office Ledgers/ Logs
  - Postmaster Appointments & Dates
  - Post Office Discontinuations and Transfers
- Applications to establish a Post Office
- Verification of Post Office locations
- Postmaster Compensation Records
- Gazetteers (City Directories)
- Ancestry.com/ Individual family trees
- Old Milton Family Histories/ Genealogies/ Photos

# Post Office Logs By County

121	Milton Co. Ga.			
Lat in "Cherokee" Co Dis. + Fields X Roads	John S. James	13 April '58	Moses G. Rosser	21 Dec: 1858
Lat in <sup>Sturges House</sup> Cherokee Co + Alpharetta	Oliver P. Skelton	5 Oct. '58	Joel Rucker	23 Aug: 1859
Lat in Cherokee Co, Dis. + Freemansville	Lot H. Jones	25 June 1860	Cicero H. Maddox	17 Jan: 1861
Lat in Cobb Co Dis. + Newton	Cicero H. Maddox	10 Sept. '74	William H. Antreij	30 June 1854
			Discontinued	17 July 1861
Lat in Smyth Co. Dis. Warsaw	Wm. W. Anderson	21 Oct '67	Dis.	21 Apr '71
Lat above + Field's Cross Roads	Shirley W. Cook	1 Nov '70	J. M. Upshaw	2 Dec '73
Dis. ✓ Groganville	Oliver Copeland	15 Oct. '73	Jas. H. Roberts	25 June '74



# Request for a Post Office Application Form

No. 1011. (LOCATION PAPER.)

**Post Office Department,**  
OFFICE OF THE FOURTH ASSISTANT POSTMASTER GENERAL,  
APPOINTMENT DIVISION.

JUN 18 1900  
WASHINGTON, D. C., 1900

SIR: Before the Postmaster General decides upon the application for the establishment of a post office at \_\_\_\_\_, County of \_\_\_\_\_, State of \_\_\_\_\_, it will be necessary for you to carefully answer the subjoined questions, get a neighboring postmaster to certify to the correctness of the answers, and return the location paper to the Department, addressed to me. If the site selected for the proposed office be not on any mail route, only a "Special Office" can be established, to be supplied with mail from some convenient point on the nearest mail route by a special carrier, for which service a sum equal two-thirds the salary of the postmaster will be paid by the Department.

You should inform the contractor, or person performing service for him, of this application, and require him to execute the appended certificate as to the practicability of supplying the proposed office with mail.

Very respectfully,

*J. H. Ristow*  
Fourth Assistant Postmaster General.

To Mr. *Douglas Foutis*  
care of the Postmaster of *Roswell, Ga.*, who will please forward to him.

**STATEMENT.**

The proposed office to be called *Fulton*  
*Gopher Hill - G. F.*

**Notice directions for selecting post office names on next page.**

It will be situated in the \_\_\_\_\_ quarter of Section \_\_\_\_\_ Township \_\_\_\_\_ (North or South),  
Range \_\_\_\_\_ (East or West), \_\_\_\_\_ in the County of *Milton* State of *Ga.*  
It will be on \_\_\_\_\_ route No. *21253* being the route from *Roswell*  
to *Coker* on which the mail is now carried *3* times per week.  
Will it be directly on this route?—Ans. *Yes*  
If not, how much would its supply on this route increase the distance necessarily traveled by the carrier in going once over the route? \_\_\_\_\_  
If not on any route, is a "Special Office" wanted?—Ans. \_\_\_\_\_ To be supplied from *Roswell, Ga.*  
The name of the nearest office to the proposed one, on one side, is *Roswell* South  
its distance is *3* miles in a *S E* direction from the proposed office.  
The name of the nearest office, on the other side, is *Coker* West  
its distance is *2* miles in a *W* direction from the proposed office.  
The name of the other nearest office to the proposed one is *Coker, W. B.*  
its distance by the most direct road is *2* miles in a *W* direction from the proposed office.  
The name of the most prominent river near it is *Chattahoochee*  
The name of the nearest creek is *Big Creek*  
The proposed office will be *4* miles from said river, on the *West* side of it, and will be *4* miles from said nearest creek, on the *West* side of it.  
The name of the nearest railroad is *Southern*  
If on the line of or near a railroad, on which side will the office be located; how far from the track; and what is, or will be, the name of the station?—Ans. \_\_\_\_\_  
Give the population to be supplied by the proposed office.—Ans. *200*  
If it be a village, state the number of inhabitants.—Ans. \_\_\_\_\_  
A diagram, or sketch from a map, showing the position of the proposed new office, with neighboring river or creek, roads, and other post offices, towns, or villages near it, will be useful, and is therefore desired.

ALL WHICH I CERTIFY to be correct and true, according to the best of my knowledge and belief, this \_\_\_\_\_ day of *June*, 1900.

(Sign full name.) *Douglas Foutis* Proposed P. M.

I CERTIFY that I have examined the foregoing statement, and that it is correct and true, to the best of my knowledge and belief.

(This must be signed by Postmaster at nearest office.)

*J. B. Moore*  
Postmaster at *Coker*

At a "special office" the postmaster is authorized to employ a carrier to supply the office as often as practicable, for a not exceeding two-thirds of the postmaster's compensation.

Applications for post offices should be accompanied by petitions of the citizens interest



# Postal Verification Form

F.M.P.

DIVISION OF  
POSTMASTER GENERAL  
(TOPOGRAPHY SECTION)

Post Office Department  
FOURTH ASSISTANT POSTMASTER GENERAL

Washington May 14, 1923.

Postmaster, Alpharetta  
Milton Co Fulton Co.  
Ga.

POST OFFICE DEPT.  
Division of Topography

JUN 9 1923

Consolidated Jan. 1, 1932

In order that the site of your post office may be accurately represented upon the post-route maps, it is requested that you carefully answer the questions below and furnish a sketch, according to instructions on opposite side of paper, which should be returned to this Division as soon as possible.

FOURTH ASSISTANT POSTMASTER GENERAL.

The name of my post office is Alpharetta, Ga.

If the town, village, or site of the post office be known by another name than that of the post office, state that other name here: \_\_\_\_\_

My post office is situated in the Central part of Alpharetta, Ga. Township,  
or in \_\_\_\_\_ quarter of tract \_\_\_\_\_ Number \_\_\_\_\_ Township,  
County of Milton Fulton State of Georgia

The name of the nearest river is Chattahoochee and the post-office building is at a  
distance of \_\_\_\_\_ on the \_\_\_\_\_ side of it.

The name of the nearest creek is Big Creek and the post-office building is at a  
distance of 1 7/8 miles on the W. side of it.

The name of the nearest office on my route is Roswell, Ga.  
and its distance is 7 miles, by the traveled road, in a S/W direction from this, my office.

The name of the nearest office on my route, on the other side, is Cumming, Ga.  
and its distance is 16 1/2 miles, in a N/E direction from this, my office.

The name of the nearest office not on my route is Duluth, Ga.  
and its distance is 12 miles, by the traveled road, in a E direction from this, my office.

The post-office building is on the \_\_\_\_\_ side of the \_\_\_\_\_ Railroad,  
and at a distance of \_\_\_\_\_ from the track.

The railroad station name is Not any

The air-line distance from my post office to the nearest point of my county boundary is 5 1/4 miles  
in a S/W direction.

Postmaster: Ralph A. Nature

Date: June 7, 1923

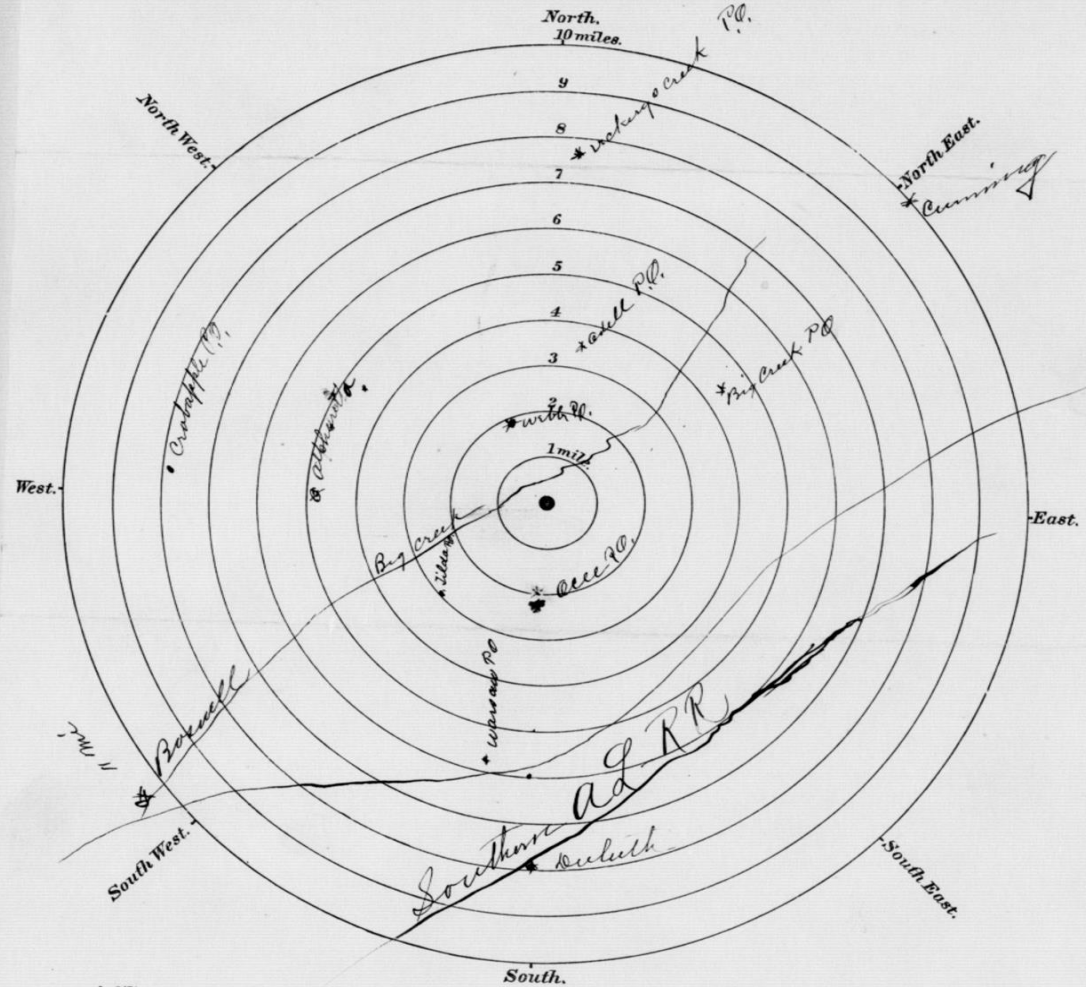
# Maps: Circle Diagram

## DIAGRAM, EXPLANATION, AND INSTRUCTIONS.

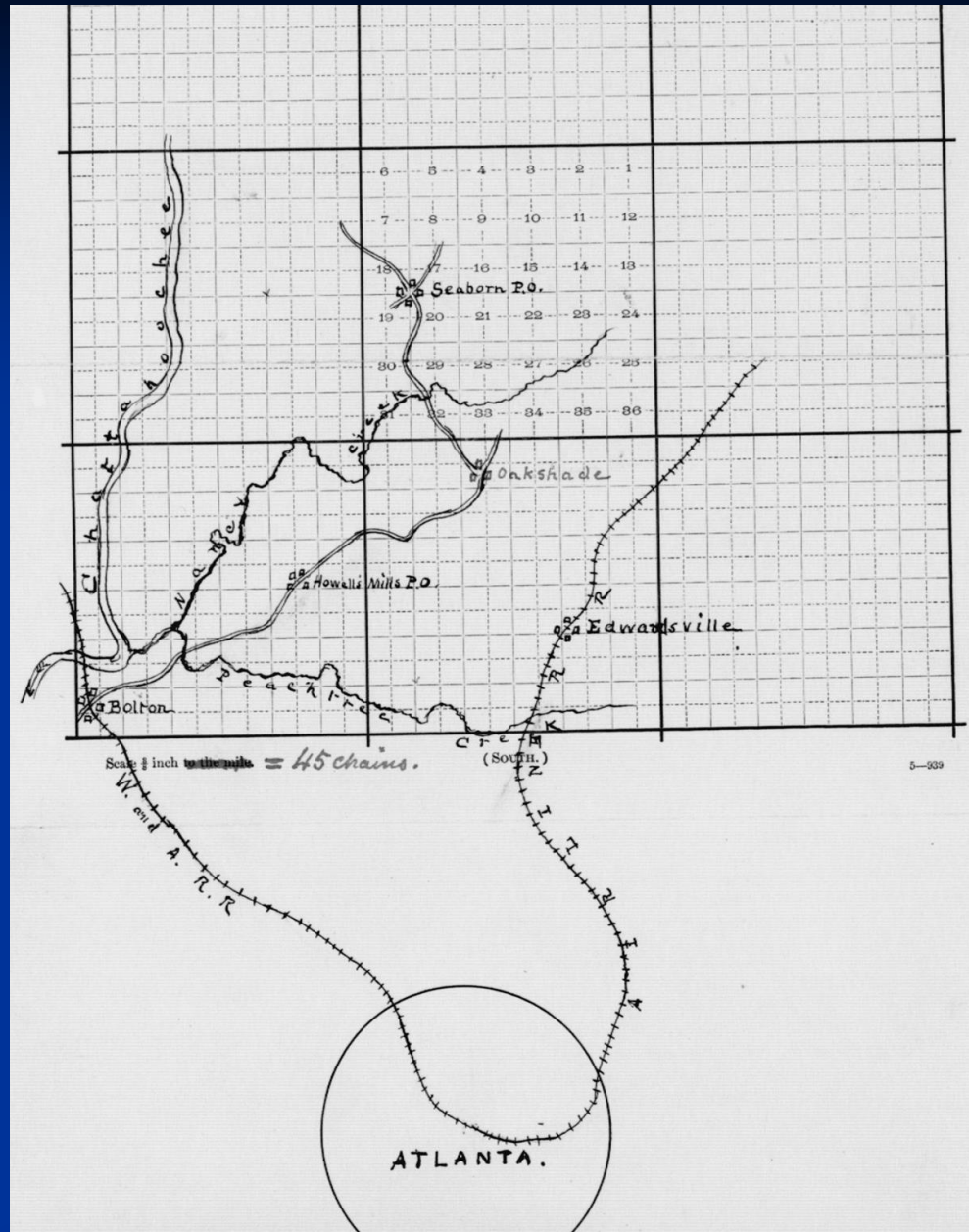
The dot in the center of the 1-mile circle represents the site of your office.  
The surrounding offices should be carefully located by placing dots on or between the mile circles at the exact distance, and in the right direction from the proposed one, and their names plainly written.

If it should be necessary to designate an office which is over 10 miles from the proposed one, place the dot outside of the 10-mile circle, write the name of such office, and state its distance from the proposed one.

Draw distinctly the railways, roads, rivers, and creeks.



# Maps: Graph Diagram





# Postmaster Compensation Database

Ancestry.com - U.S., Register of Civil, Military, and Naval Service, 1863-1959

U.S., Register of Civil, Military, and Naval Service, 1863-1959

1895 Volume 2

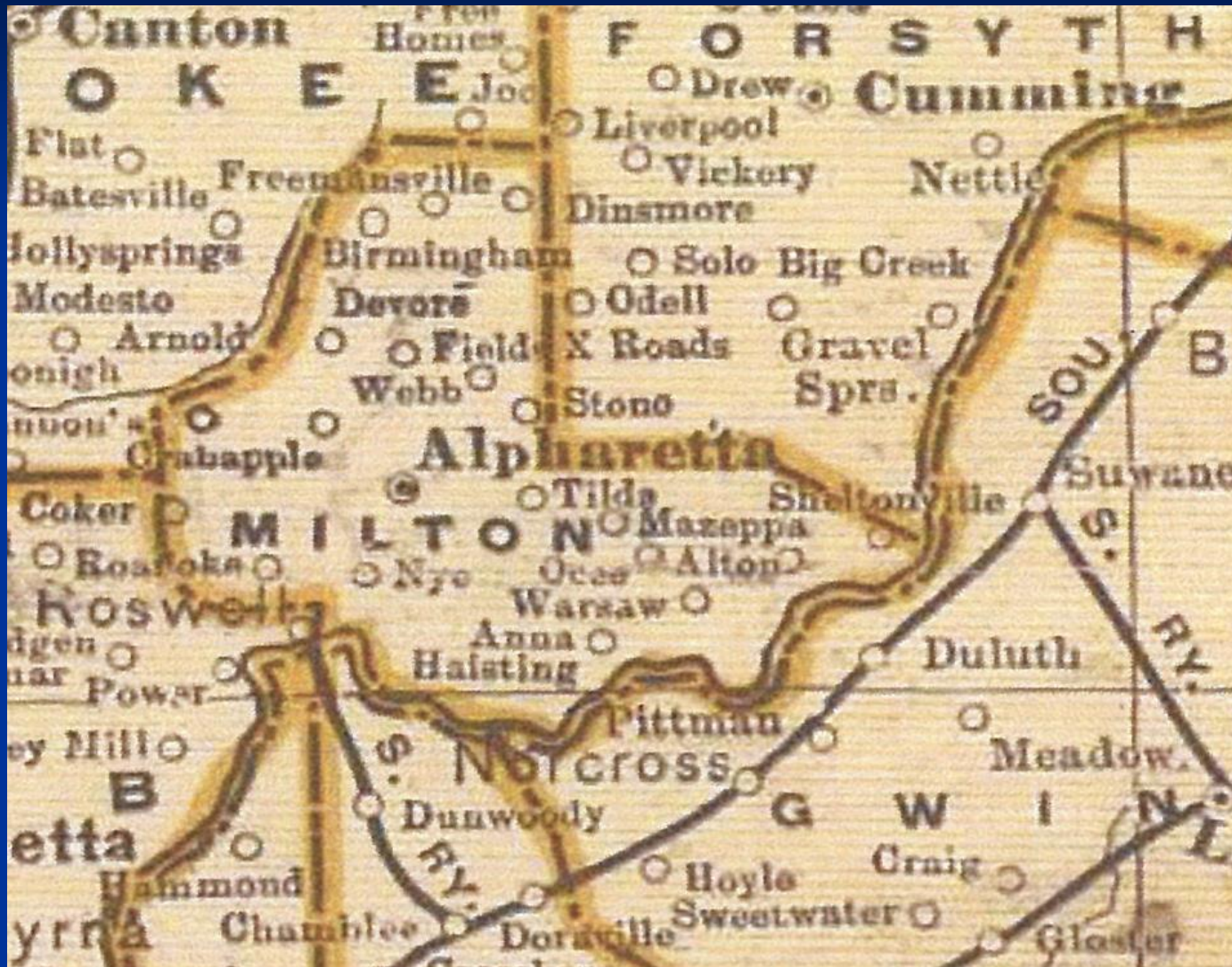
Abbe	Abbe	F. B. Harrison	35.19	Abbe	E. T. Norton	41.84
Abbeville	Abbeville	W. E. J. Fricks	14.71	Abbeville	J. M. Harrison	12.12
Abbeville	Abbeville	M. L. Bailey	281.45	Abbeville	D. A. Anstey	122.25
Abbeville	Abbeville	C. W. Oatis	14.96	Abbeville	W. W. Farrah	4.15
Abbeville	Abbeville	T. E. Williams	56.18	Abbeville	K. M. Yew	128.25
Abbeville	Abbeville	W. F. Montgomery	25.43	Abbeville	J. N. Eastman	41.90
Abbeville	Abbeville	W. A. Hogan	24.74	Abbeville	A. Ayers	112.01
Abbeville	Abbeville	T. A. Brown	74.56	Abbeville	P. F. Britton	22.15
Abbeville	Abbeville	D. F. Dunson	72.11	Abbeville	W. H. Aycock	12.47
Abbeville	Abbeville	T. A. Aikens	56.97	Abbeville	J. H. Kyles	40.86
Abbeville	Abbeville	Chas. M. Carver	241.68	Abbeville	Lula T. Lyon	12.37
Abbeville	Abbeville	A. Henson	16.20	Abbeville	T. F. Jones	20.49
Abbeville	Abbeville	Josiah G. Williams	4.96	Abbeville	A. V. McVickers	15.22
Abbeville	Abbeville	Laura O. Akridge	4.96	Abbeville	P. H. Baker	12.88
Abbeville	Abbeville	L. L. Polston	11.81	Abbeville	Garrison H. Reynolds	165.77
Abbeville	Abbeville	John McKee	225.16	Abbeville	J. F. Bailey	90.22
Abbeville	Abbeville	Y. O. East	800.90	Abbeville	W. C. Barrell	5.44
Abbeville	Abbeville	S. D. Night	21.98	Abbeville	I. Zacharias	1,500.00
Abbeville	Abbeville	T. S. Blackard	41.17	Abbeville	J. L. Wilson	176.43
Abbeville	Abbeville	J. O'Donoghue	284.11	Abbeville	Geo. W. Cleveland	121.09
Abbeville	Abbeville	J. F. White	1.29	Abbeville	J. H. Jones	18.05
Abbeville	Abbeville	John H. Elder	17.94	Abbeville	J. F. Pye	48.10
Abbeville	Abbeville	Thomas A. Horton	42.76	Abbeville	A. W. Roberts	216.22
Abbeville	Abbeville	C. N. Walker	18.25	Abbeville	Martin S. Corbett	13.06
Abbeville	Abbeville	J. H. Kirby	208.71	Abbeville	James E. Wyatt	26.37
Abbeville	Abbeville	Green D. Butler	22.41	Abbeville	E. F. Eastman	20.60
Abbeville	Abbeville	Reit. F. Coughart	28.26	Abbeville	M. E. Palmer	20.95
Abbeville	Abbeville	A. J. Adair	10.97	Abbeville	T. A. Neal	32.47
Abbeville	Abbeville	J. H. Lamb	188.95	Abbeville	James M. Morrow	185.31
Abbeville	Abbeville	E. T. Malone	4.48	Abbeville	H. M. King	12.19
Abbeville	Abbeville	T. J. Almond	40.11	Abbeville	E. W. Elder	1,400.00
Abbeville	Abbeville	A. P. Galloway	31.68	Abbeville	G. S. Burnley	20.76
Abbeville	Abbeville	E. R. Treadwell	200.11	Abbeville	E. S. O'Brien	174.50
Abbeville	Abbeville	James T. Leslie	26.11	Abbeville	A. N. Barrett	78.22
Abbeville	Abbeville	John Pearson	155.40	Abbeville	David S. Shulake	183.78
Abbeville	Abbeville	P. T. Shors	111.57	Abbeville	W. J. Evans	411.91
Abbeville	Abbeville	Ben. J. Findley	1.00	Abbeville	John Massey	19.47
Abbeville	Abbeville	James B. Street	.50	Abbeville	John T. Brown	61.20
Abbeville	Abbeville	MAN.		Abbeville	Stephen B. Lewis	41.17
Abbeville	Abbeville	W. H. Brown	18.26	Abbeville	J. H. L. Barnes	5.44
Abbeville	Abbeville	W. E. Kidding	18.26	Abbeville	Nathan T. Boston	29.29
Abbeville	Abbeville	John N. Seabrook	2,200.00	Abbeville	J. A. Bates	20.45
Abbeville	Abbeville	ough.		Abbeville	W. V. Thompson	100.26
Abbeville	Abbeville	A. A. Chester	33.40	Abbeville	E. L. Baldwin	54.09
Abbeville	Abbeville	George C. Hogan	11.20	Abbeville	James L. Holton	419.04
Abbeville	Abbeville	J. T. Colard	201.43	Abbeville	D. A. Fain	26.93
Abbeville	Abbeville	M. M. Langston	25.51	Abbeville	J. H. Fain	18.21
Abbeville	Abbeville	B. L. Jester	247.20	Abbeville	W. J. Rogers	171.11
Abbeville	Abbeville	J. P. Humphries	14.37	Abbeville	Charles J. Bryant	28.97
Abbeville	Abbeville	Heard	12.20	Abbeville	Liberty	

U.S. Register of Civil, Military, and Naval Service 1863 -1959

# Post Offices in the Milton Area

- Arnold
- Beathoney
- Birmingham
- Crabapple
- Devore
- Dinsmore
- Dow
- Fields Crossroads
- Freemansville
- Social Hill
- Troy
- Webb

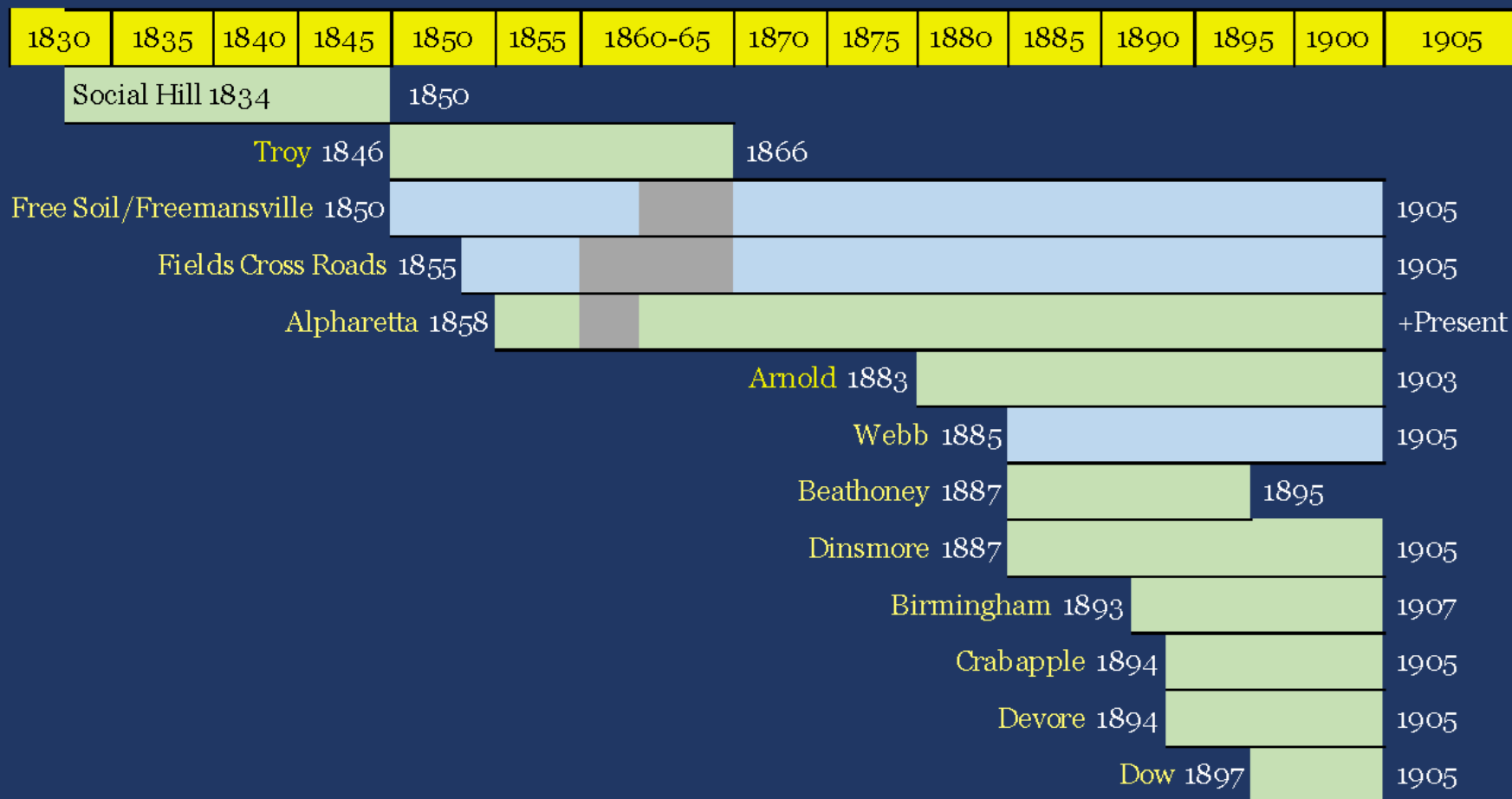
# Milton County 1889



1889 Central Georgia Railway Map



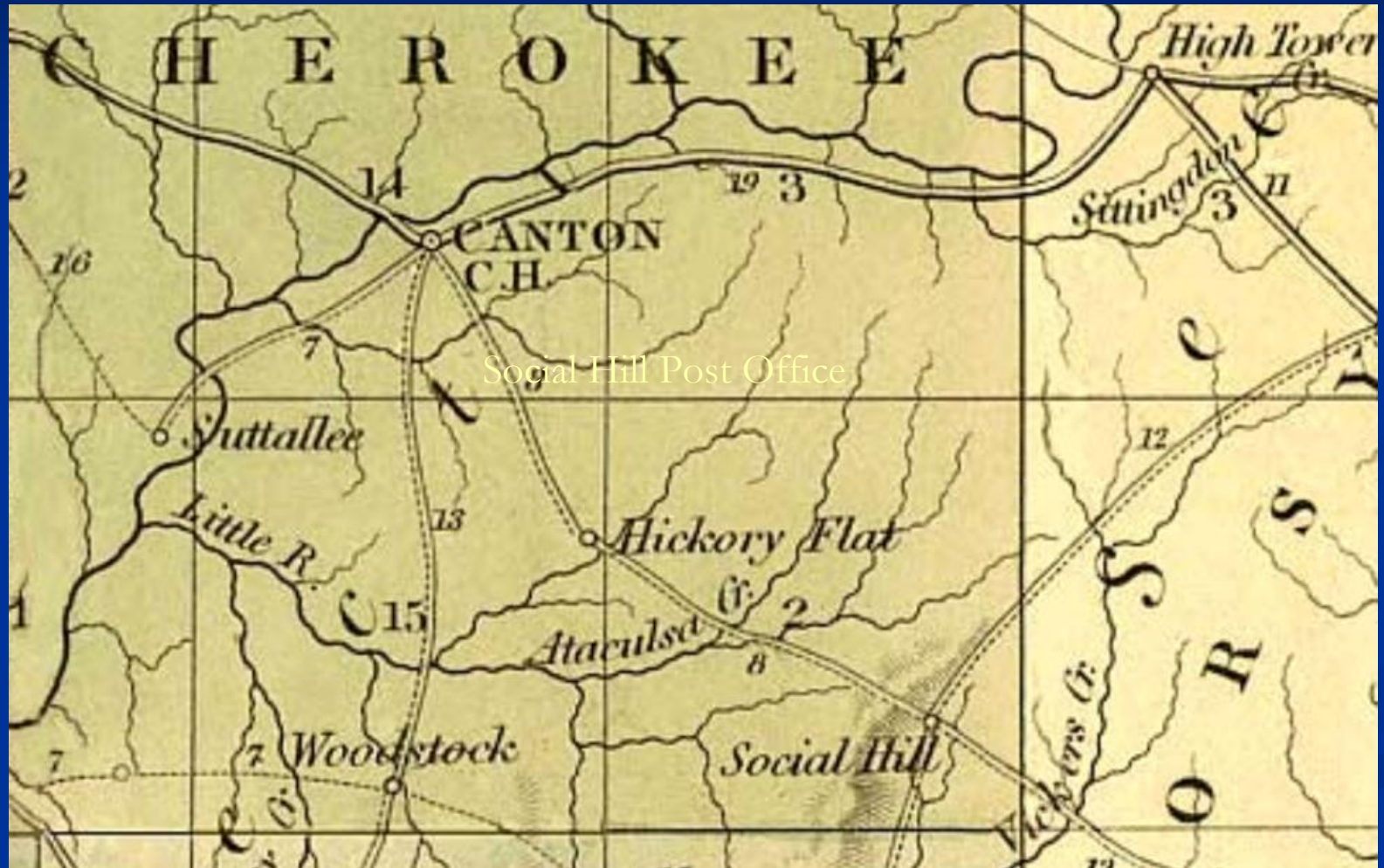
# Post Offices 1834 to 1907



# Social Hill Post Office

- Established June 11, 1834
- Postmasters appointed...
  - Thomas B. Wells - June 11, 1834
  - Russell Jones - February 19, 1835
  - Isaiah Simpson & Selser Dobbs - August 13, 1842
  - D. W. Liddell - February 9, 1849
  - Manley H. Ford - February 18, 1850
  - Joseph Ragsdale - August 5, 1850
- Discontinued November 4, 1850

# Social Hill Post Office



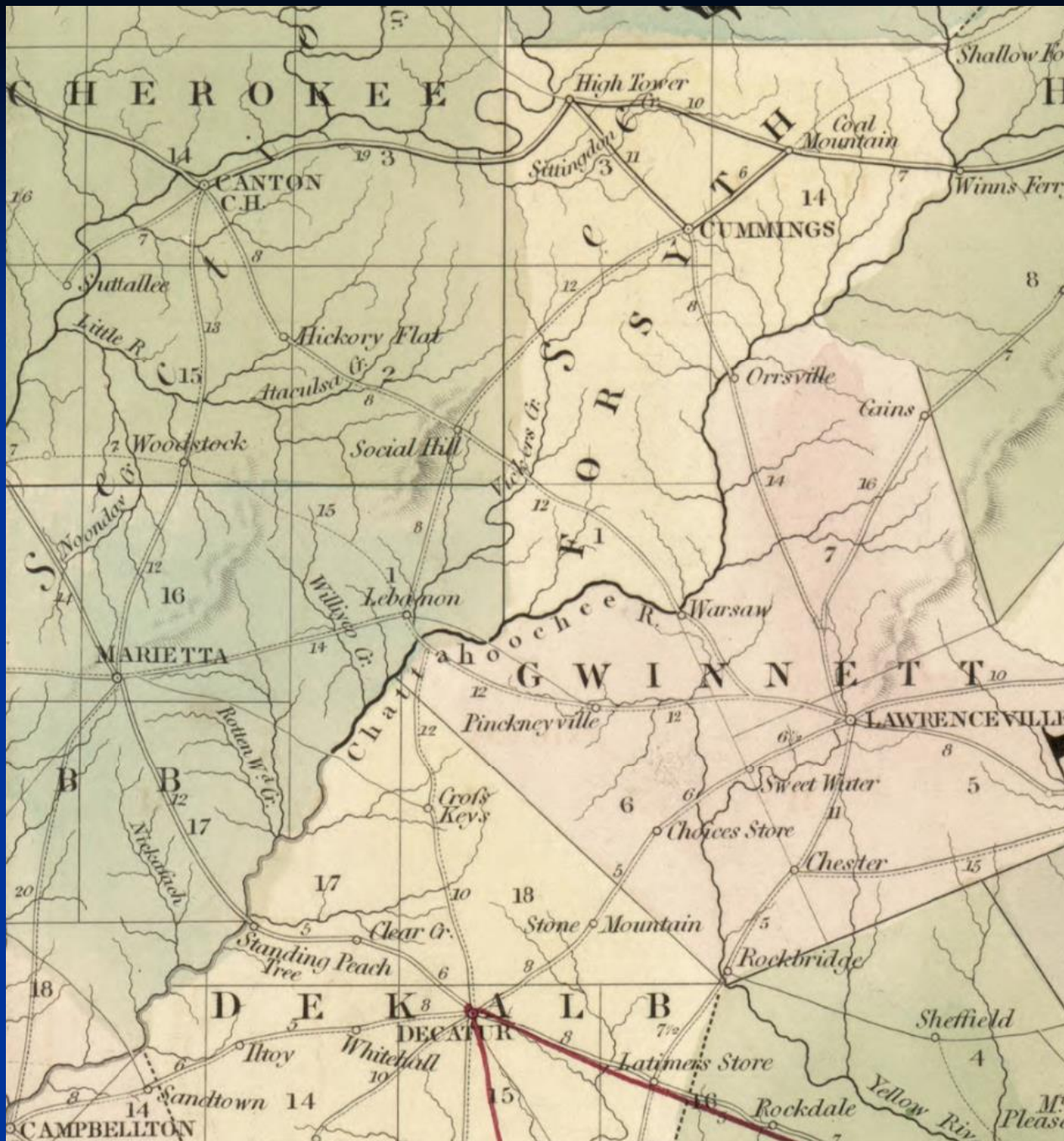
David Burr, Topographer 1839



# Milton Communities at the Crossroads

Social Hill on the major crossroad linking

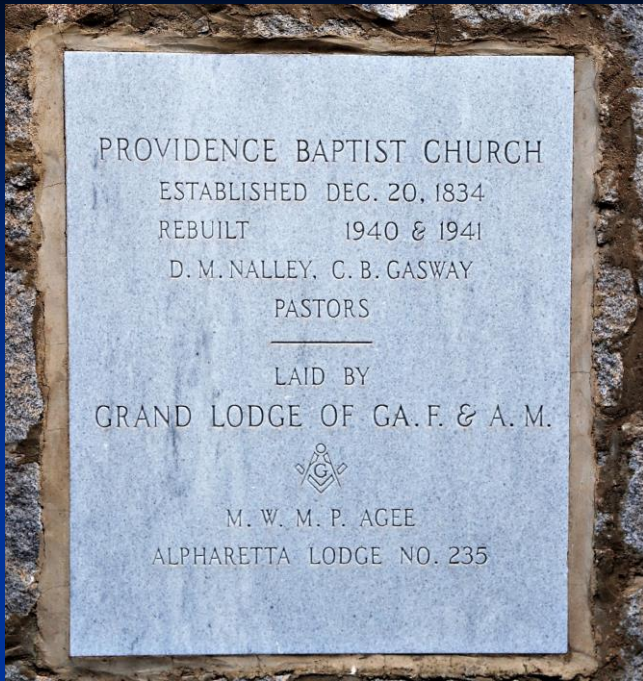
- Canton to Lawrenceville
- Coal Mountain to Lebanon and Decatur



David Burr Map of 1839

# Providence Baptist Church

## Established 1834



Old Providence Church circa 1940 Photo Credit: Burma Tucker Parker





# Fields Crossroads Post Office

- Five-year gap in mail service 1850-1855
- Established January 1855 in the community of Social Hill, Cherokee County
- Providence Road and Old Freemansville Road





# Fields Crossroads Post Office #1

Providence Road and  
Freemansville Road



# Fields Crossroads Post Office

Named for Lawson Fields, First Postmaster  
and the first Milton County State Senator

Postmasters appointed...

- Lawson Fields -- January 18, 1855
- John H. Cooke -- October 10, 1855
- John S. James -- April 13, 1858
- Moses G. Rosser -- December 21, 1858
- Shurley W. Cook -- November 1, 1870
- James Middleton Upshaw -- December 2, 1873
- Charles B. Hagood -- March 4, 1902



# Fields Crossroads #2

1880

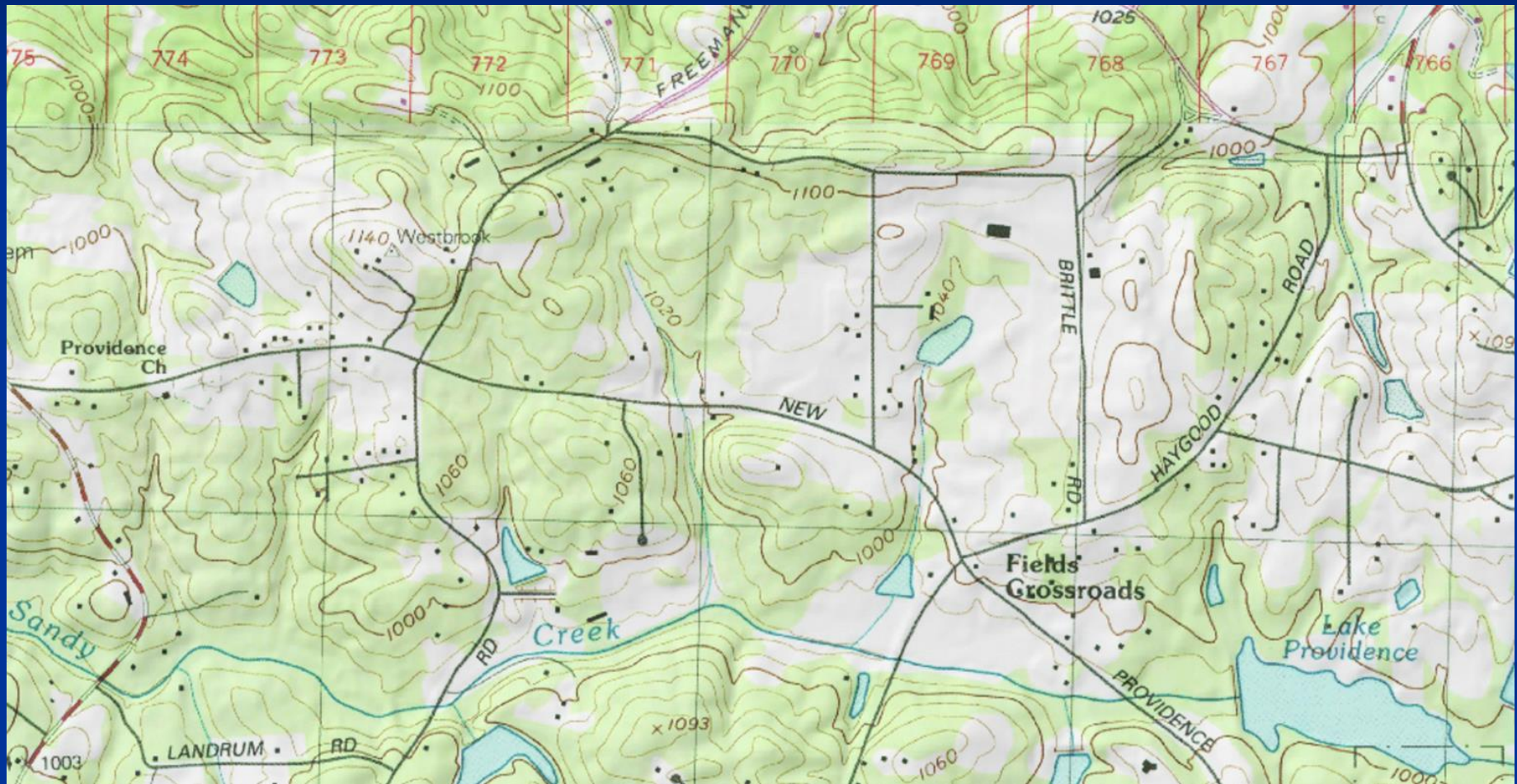
Post Office moved east  
to southeast corner of  
Providence and  
Bethany Roads





# Fields Crossroads Post Office #2

## Providence Road and Bethany Road



Topographical Map, Fulton County

# Fields Crossroads Post Office #3 Hagood General Store



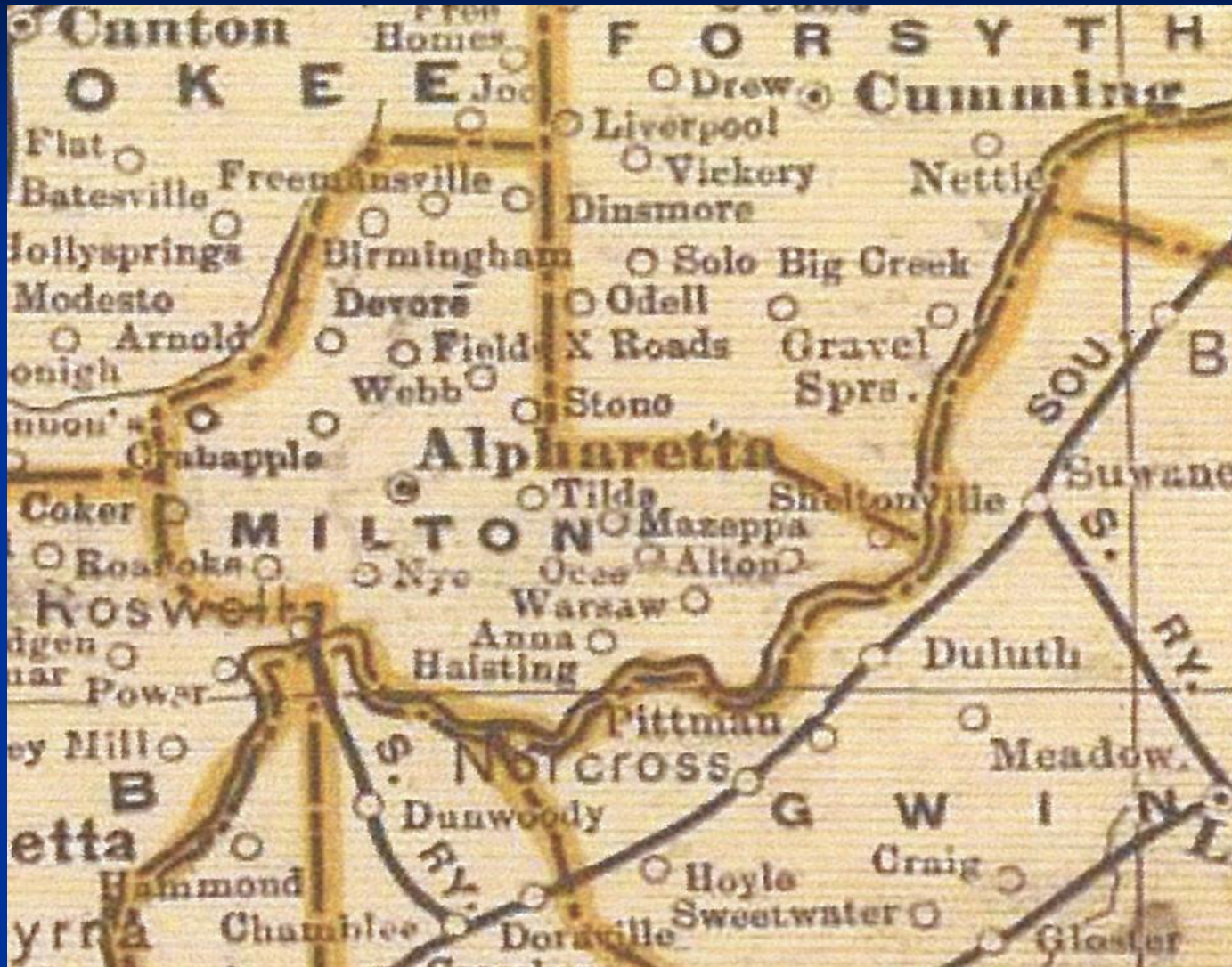
Served as the Fields Crossroads Post Office from 1902 to 1905

# Devore Post Office

- Established June 1894
- Near the intersection of Providence Road and Birmingham Highway

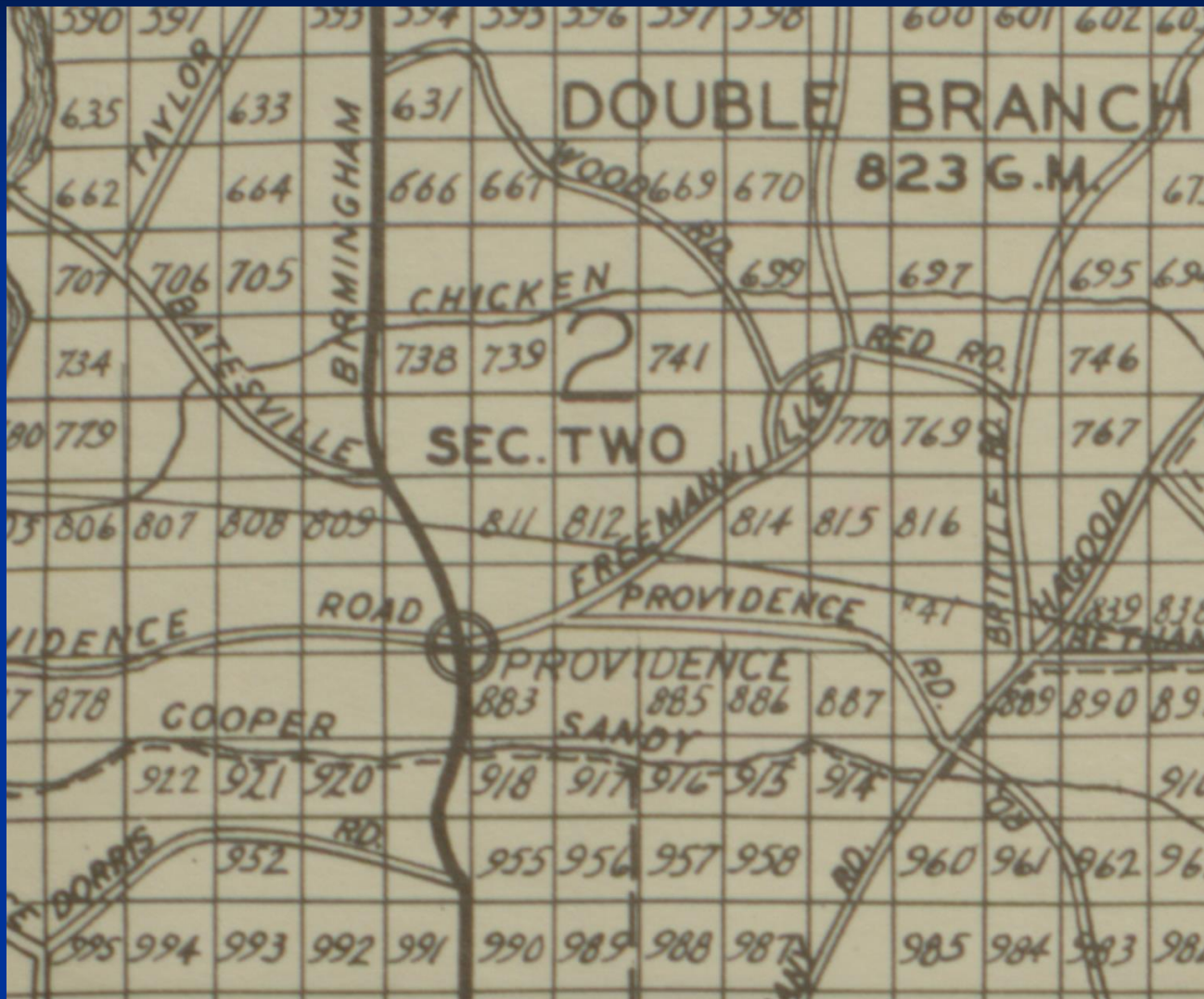


# Devore Post Office



1889 Central Georgia Railway Map

# Devore Post Office



Robert's 1942 Map of Fulton County, Georgia

# Devore Post Office

- Postmasters appointed...
  - Mrs. Frances A. Devore Upshaw appointed June 1894
  - Her brother: David W. Devore appointed February 1899
- Discontinued February 1905



# Providence Baptist Church Cemetery

(Old Social Hill Community)



# Webb Post Office

Old timers referred to the Community as  
“ Webb Georgia”

- Established in 1885
- Location: east of today's Hwy 9 and Webb Road
- On route from Alpharetta to Cumming

# Webb Georgia



USGS Map 1887



# Webb Georgia

Postmasters appointed...

- Joel Webb -- December 8, 1885
- Robert R. Anglin -- January 14, 1903
- Joel's son: James A. Webb -- May 23, 1904

Discontinued February 6, 1905

# Webb Community

- The Webb family operated a store and blacksmith shop at the corner of Hwy 9 and Webb Road
- A Gin Mill operated until 1950
- A Grocery store in the community was built in 1938, replaced by the Webb Feed store around 1975

# Webb, Georgia General Feed Store





# Beathoney Post Office

- Established March 1887 – requested “Roddy”
- Located on southwest corner of Hwy 9 at Bethany Bend Road

# Beathoney Post Office



USGS Map 1887

# Beathoney Post Office

- Postmasters appointed...
  - Albert M. Bell - April 21, 1887
  - George M.D. Turner - January 12, 1895
- Discontinued March 5, 1895 – mail transferred to Odell Post Office (Forsyth County)
  - George Turner's wife, Zaphorah Ophelia Turner, appointed in Odell



# Bethany Baptist Church

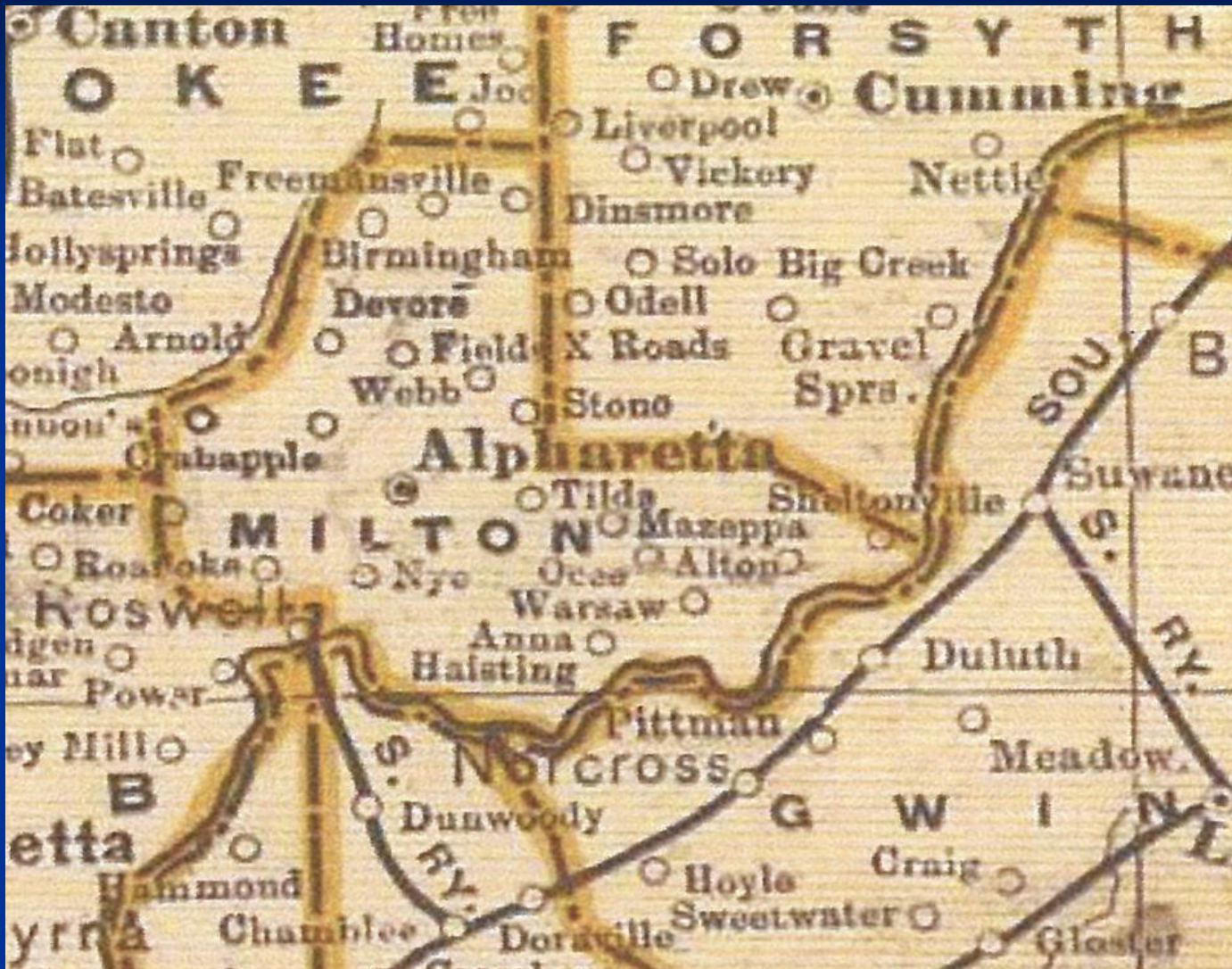


Congregation established December 27, 1850

# Crabapple Post Office

- Established January 1894
- Named for community school built in 1874
- Located 3¼ miles west of Alpharetta where five roads converge

# Milton County Post Offices



1889 Central Georgia Railway Map



# Crabapple Post Office

- Postmasters appointed...
  - Francis Fowler -- February 14, 1894
  - Simeon L. Rucker -- September 15, 1899
  - John W. Rucker -- October 20, 1902
- Discontinued February 28, 1905, with mail service transferred to Alpharetta

# Crabapple Postmaster

## Simeon Lamar Rucker



- Confederate Soldier injured during the Civil War
- Farmer
- Blacksmith

# Crabapple Mail Service



Photo was on the cover of the April 1, 1940 LIFE Magazine



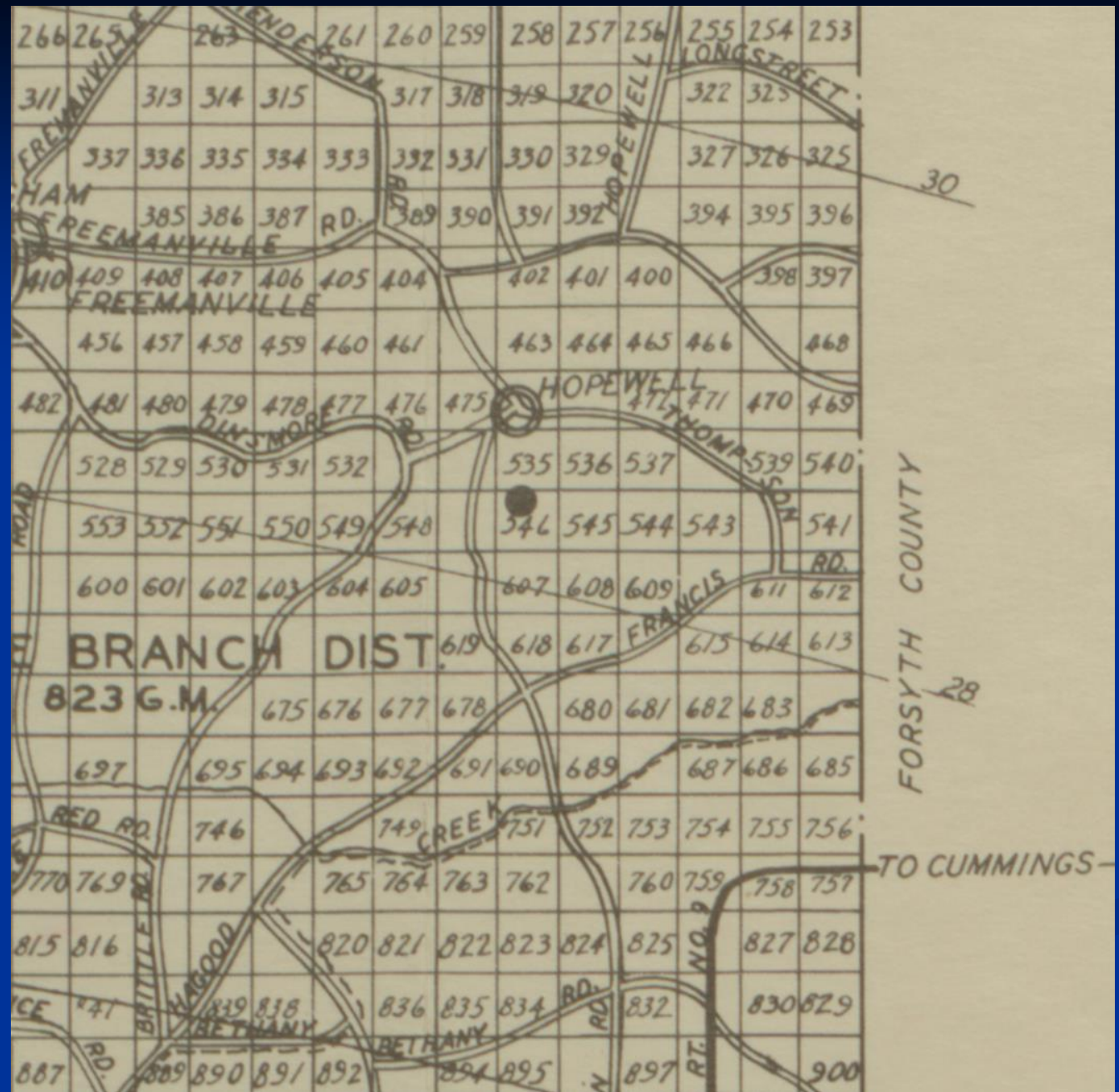
# Dow Post Office

- Established July 1897
- First name: “Ego” –changed to Dow
- Located in the Will’s Store, intersection of Thompson Road and Francis Road

Map:  
East Milton  
County

Dow Post  
Office

Robert's 1942 Map  
of Fulton County,  
Georgia



# Dow Post Office

- Postmaster appointed...
  - William Thomas Wills – July 2, 1897
- Discontinued March 21, 1905, with mail transferred to Alpharetta



# William Thomas Wills



- Confederate veteran, W. T. Wills, sitting on the porch of his General Store and Dow Post Office
- Civil War: captured at Resaca 1864
- Prisoner at Camp Morton, Indiana until May 1865

# Dinsmore Post Office

- Established March 1887
- Originally named Dinsmore Mill
- Located on Hopewell Road, on west side of Chicken Creek, 1 mile south of Cherokee County line

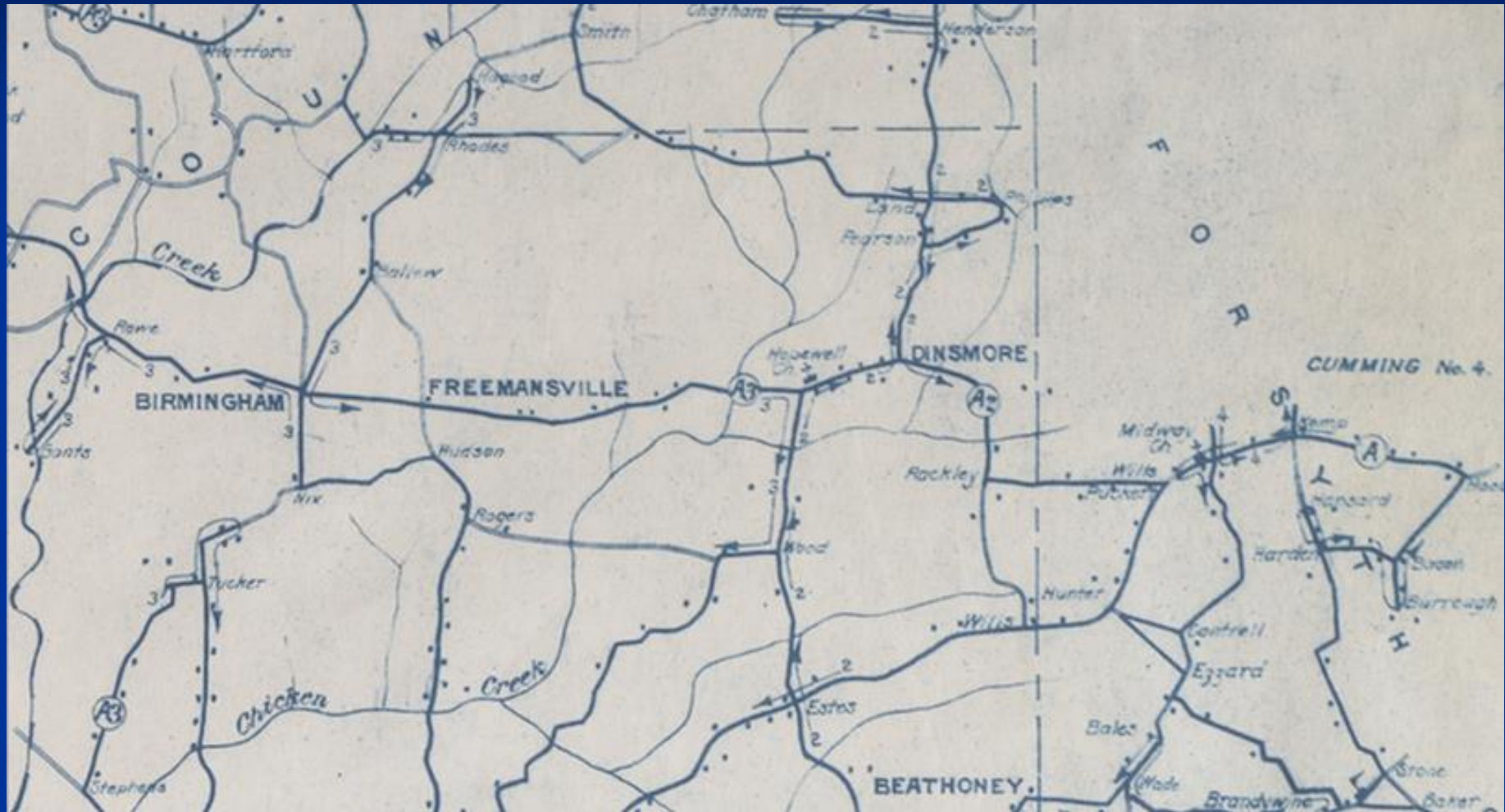
# Dinsmore Post Office



USGS Map 1887



# Dinsmore Post Office



1930 Rural Free Delivery Route Map

# Dinsmore Post Office

- Postmasters appointed...
  - William Z. Bevis – March 2, 1887
    - Son of a Union County, South Carolina Postmaster
  - Henry T. Rogers – December 27, 1888
- Discontinued April 10, 1905, with mail transferred to Alpharetta

# Freemansville Post Office

- Established as Free Soil in May 1850
- Name changed to Freemansville in 1850 in Cherokee County, later Milton County
- Located on southeast corner of Birmingham Road at Freemanville Road



# Freemansville Post Office



USGS Map 1887

## Freemansville Postmasters appointed...

- Nehemiah J. Garrison – May 30, 1850
- Joseph W. Johnston – May 1, 1851
- Wiley C. Anderson – April 8, 1858
- Lott H. Jones – January 25, 1860
- John G. Cantrell, MD – June 9, 1868
- Garrison Cross – November 3, 1870
- Cicero H. Maddox -- September 10, 1873
- Larkin Isaac Thacker – February 16, 1891
- Joseph D. Maddox – March 2, 1891
- John C. Johnston – May 6, 1892
- Joseph D. Maddox – July 12, 1892
- Cicero H. Maddox – March 23, 1893
- C. Cincinnatus Maddox – October 4, 1900
- Discontinued June 9, 1905, with mail service transferred to Alpharetta

# Shoal's Georgia State Gazetteer, 1879

“Freemansville, Milton County, is situated near the head waters of Little River, in a cotton growing section, 7 miles north of Alpharetta courthouse.

All trade is carried on with Atlanta, 33 miles distant.

Baptist and Methodist churches and one school in the vicinity. Population 30. Mail weekly by hack.”



# Freemansville Community Leaders

- Cicero M. H. Maddox, Postmaster
- William G. Anderson, Constable
- Joel Burgess, Justice
- John G. Cantrell, Physician
- Levi J. Land, Millwright
- Cicero H. Maddox, General Store
- Andrew P. Neese, Physician
- Abraham K. Newton, Tanner
- Rev. Perriman, Methodist
- Larkin Thacker, Blacksmith
- George W. Smith, Sewing Machine Agent
- Rev. James M. Stewart, Baptist
- John M. Williams, School Teacher
- Lawrence M. Yancey, Notary

In 1906, the Georgia Sketches of Counties book described Freemansville as a post-village of Milton County, about 6 miles north of Alpharetta.

In the 1900 U.S. Census the population of Freemansville was 113.

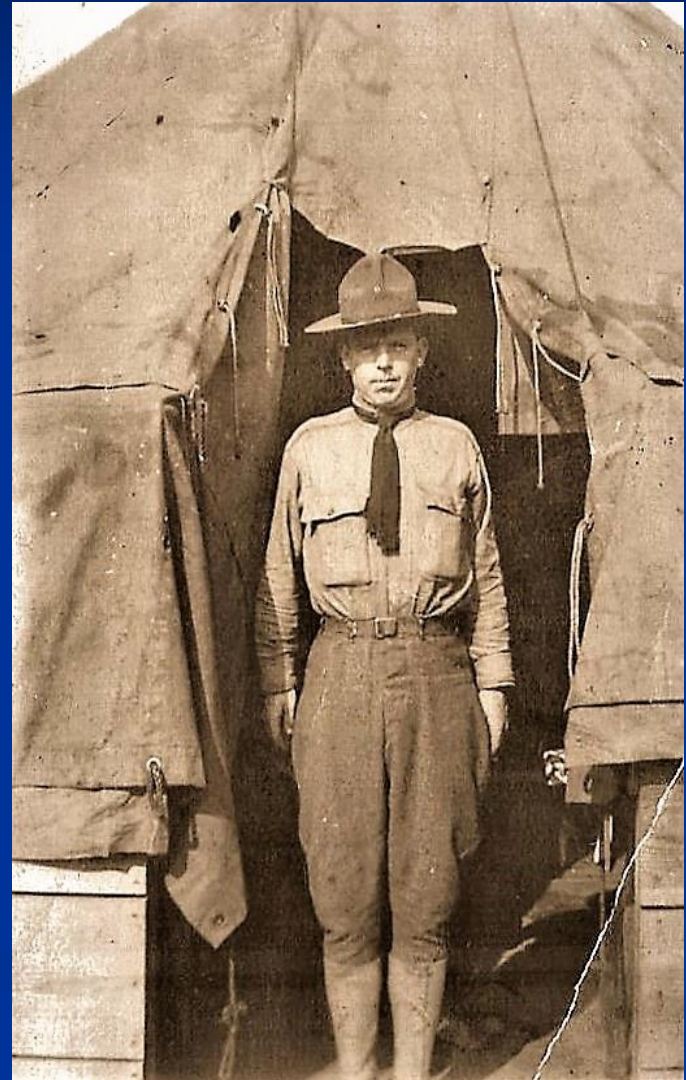
Georgia Sketches of Counties, Towns, Events, Institutions, and Persons  
Vol. II by Candler & Evans, 1906.

# Dr. Cicero Cincinnatus Maddox



# Cicero Holt Maddox, Jr.

- Cicero Holt Maddox served in France during World War I
- For 38 years, he delivered mail on Route #3 in the Milton area
- His home was at the northwest corner of Roswell and Marietta Streets

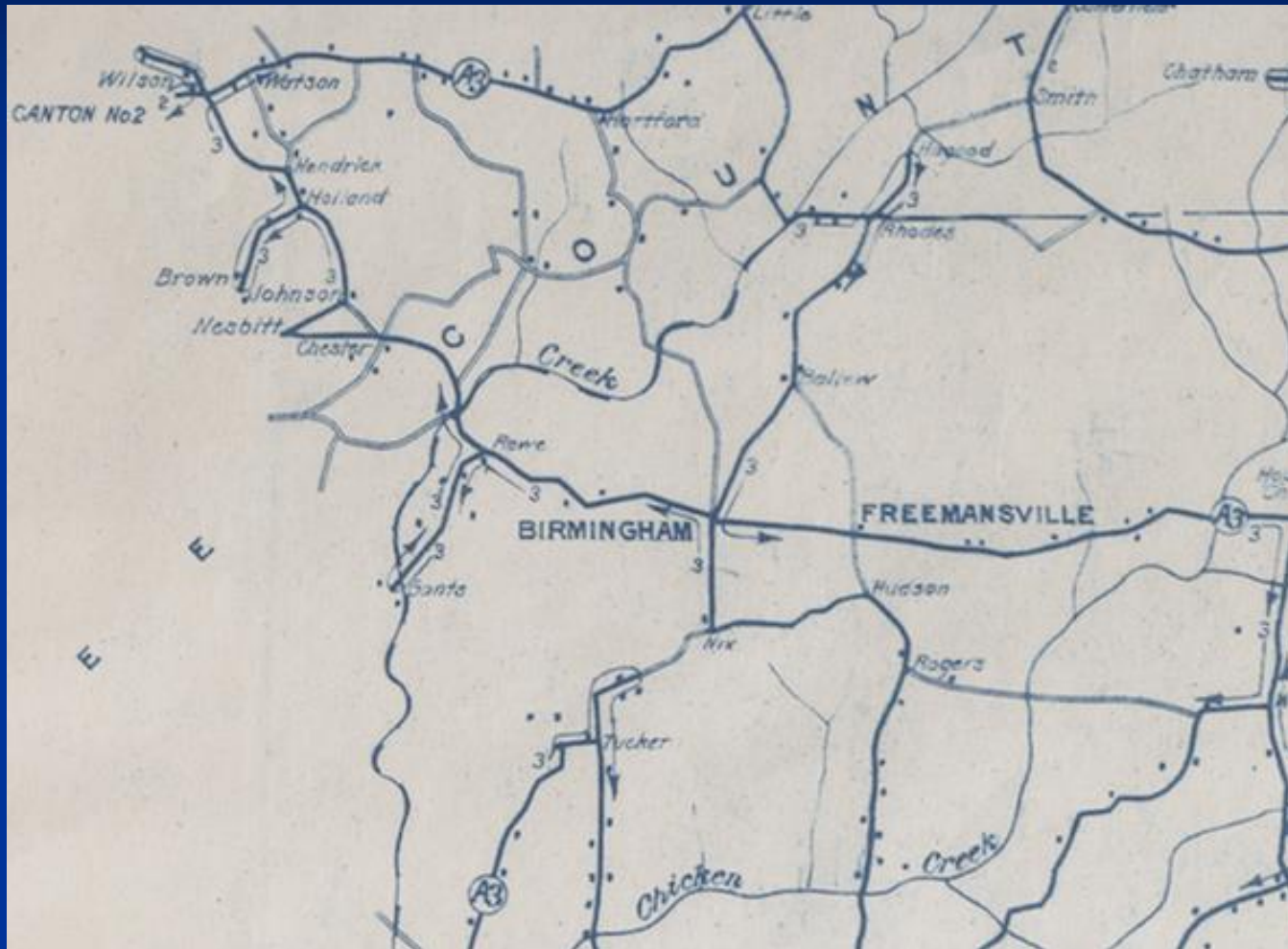




# Birmingham Post Office

- Established May 17, 1895
- Located in the Farmer's Alliance Store on the northwest corner of Birmingham Highway (GA Rt. 372) at Birmingham/Hickory Flat Road
- The Farmer's Alliance Store became the Buice Country Store; today the 7-Acres Restaurant

# Birmingham Post Office



1930 Rural Free Delivery Route Map

# Birmingham Post Office

- Postmasters appointed....
  - John Henry Johnston – May 17, 1893
  - Smith Johnston – May 19, 1897
  - Thomas B. Newton, Jr. – February 9, 1904
- Discontinued August 31, 1907, when mail service was transferred to Alpharetta



# Buice's Country Store





# Buice's Country Store



# Thomas B. Newton House





# Thomas B. Newton House



## THOMAS B. NEWTON HOUSE

Formerly known as the Old Birmingham Hotel, the building was constructed by Thomas B. Newton, Jr. around 1865. It originally stood next to Hickory Flat Road, but was relocated here in 2007 to preserve it. The building served in numerous capacities over the years, including a boarding house for 'drummers' (traveling salesmen) and teachers at the nearby school, a livery stable and stagecoach stop, post office, convalescent center for wounded Confederate soldiers, and general store. The architectural style is folk hybrid, with elements of French Second Empire (roof) and Gothic Revival (gables).

A CITY OF MILTON HISTORIC SITE

# Troy Post Office

- Established June 1846, Cherokee County
- Located at or near the McConnell home on Hwy 140, south of the Little River





Lloyd's Topographical Map of 1864

# Troy Post Office

- Postmasters appointed...
  - Thomas B. Cook – June 10, 1846
  - Eli McConnell – August 21, 1849
- Perhaps discontinued in September 1866

By 1860 both the Cook and McConnell families were living in Milledgeville, working as administrators of the State Penitentiary

# Arnold Post Office

- Established in August 1883 with proposed name of Arnold Mills
  - Application recognized site as Troy Post Office years before
  - N. J. Garrison is the subcontractor delivering mail from Woodstock to Alpharetta
- Located at Georgia State Route 140 south of the Little River



# Arnold Post Office



USGS Map 1887



# Arnold Post Office

- Postmasters appointed...
  - James B. Delk –August 9, 1883
  - Stanmore B. Pylant – November 13, 1884
  - Thomas F. Gregory –April 29, 1886
  - Sarah Burroughs – February 26, 1886
  - W. F. Gillespie –July 6, 1893
  - Humphrey Burdett – February 1, 1894
- Discontinued July 14, 1903, when mail service was transferred to Woodstock, Cherokee County

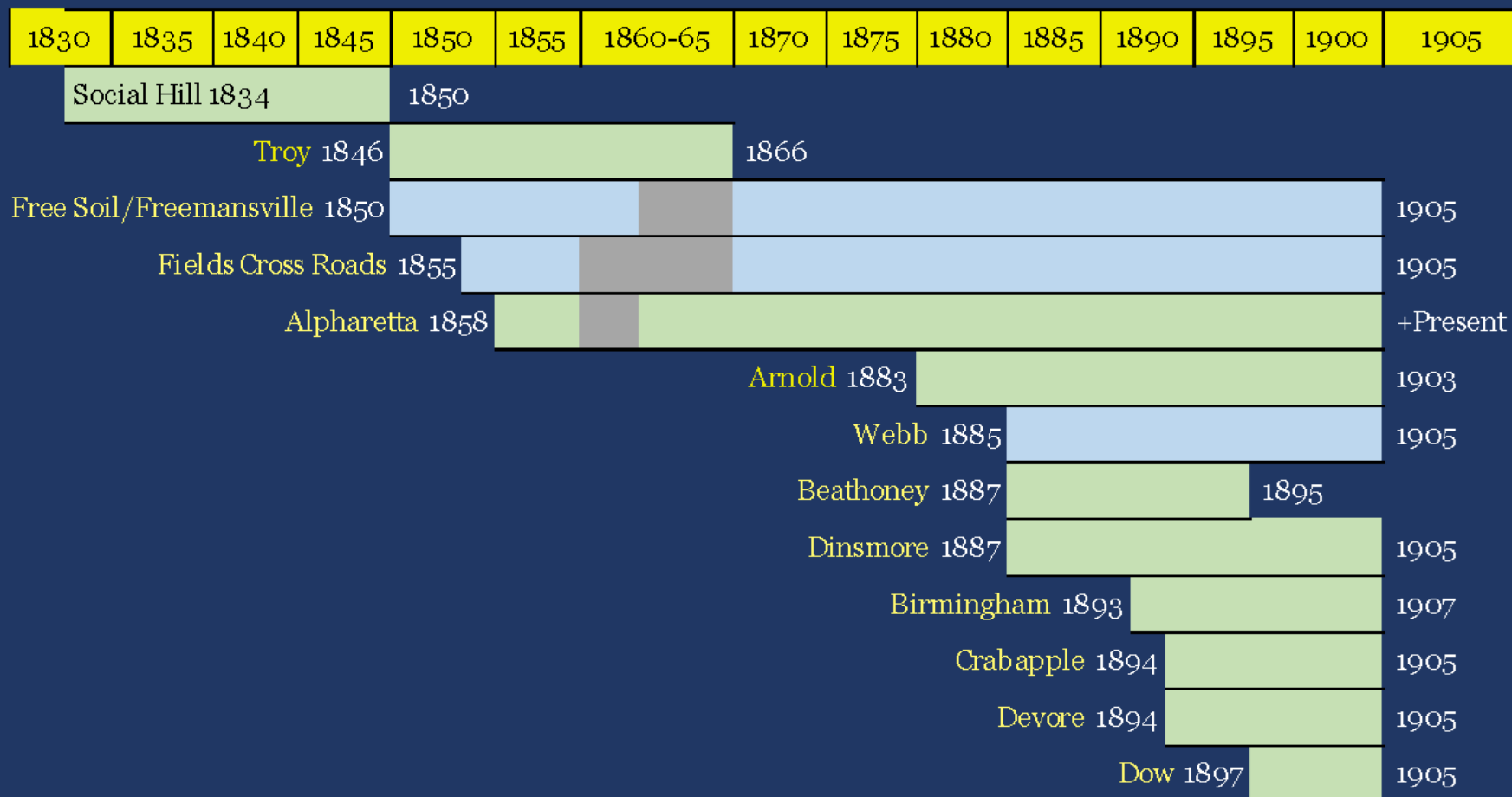
# Arnold Mill Cotton Gin & Sawmill



# Rural Free Delivery Established

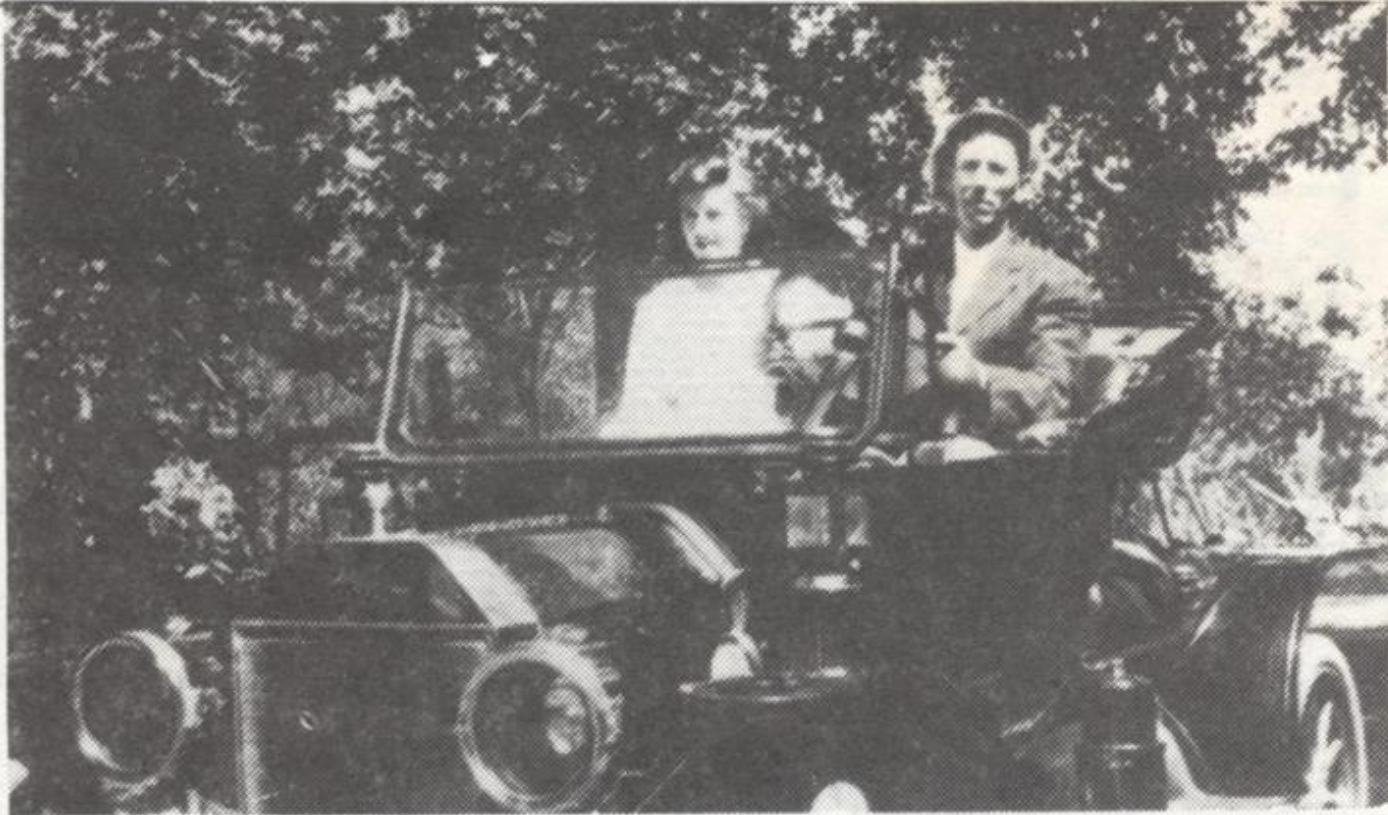
- Legislation enacted 1902
- Implemented 1905 to 1907
- Mail Service transferred to:
  - Alpharetta
  - Roswell
  - Duluth

# Post Offices 1834 to 1907





# Mail Delivery in the Early 1900s



## *Model T Carried The Mail In 1915*

Marvin Bagley, Sr., the first Rural Carrier of the Mail for Route One in Alpharetta purchased this Model T Roadster in 1915 to deliver the mail.

# 1930's Rural Free Delivery

## Postal Routes Fulton County



# Alpharetta Route # 3

Rurel Strickland born in 1914

- Joined Navy in 1934; honorably discharged 1938
- Guard at Atlanta General Depot 1941-1945
- Drafted into Army 1945; returned to the Depot as a civilian supply employee
- Mail carrier on Route #3 from 1956 thru 1966

Linda Stovall: Route 3 Carriers' Route Directory & Employment  
papers

# Acknowledgements

- Barbara Latham
- Connie Mashburn
- Joan Borzilleri
- Stephanie Andersson
- Pat Miller
- Kim Zane
- Ben Kern
- Steven Wardrup



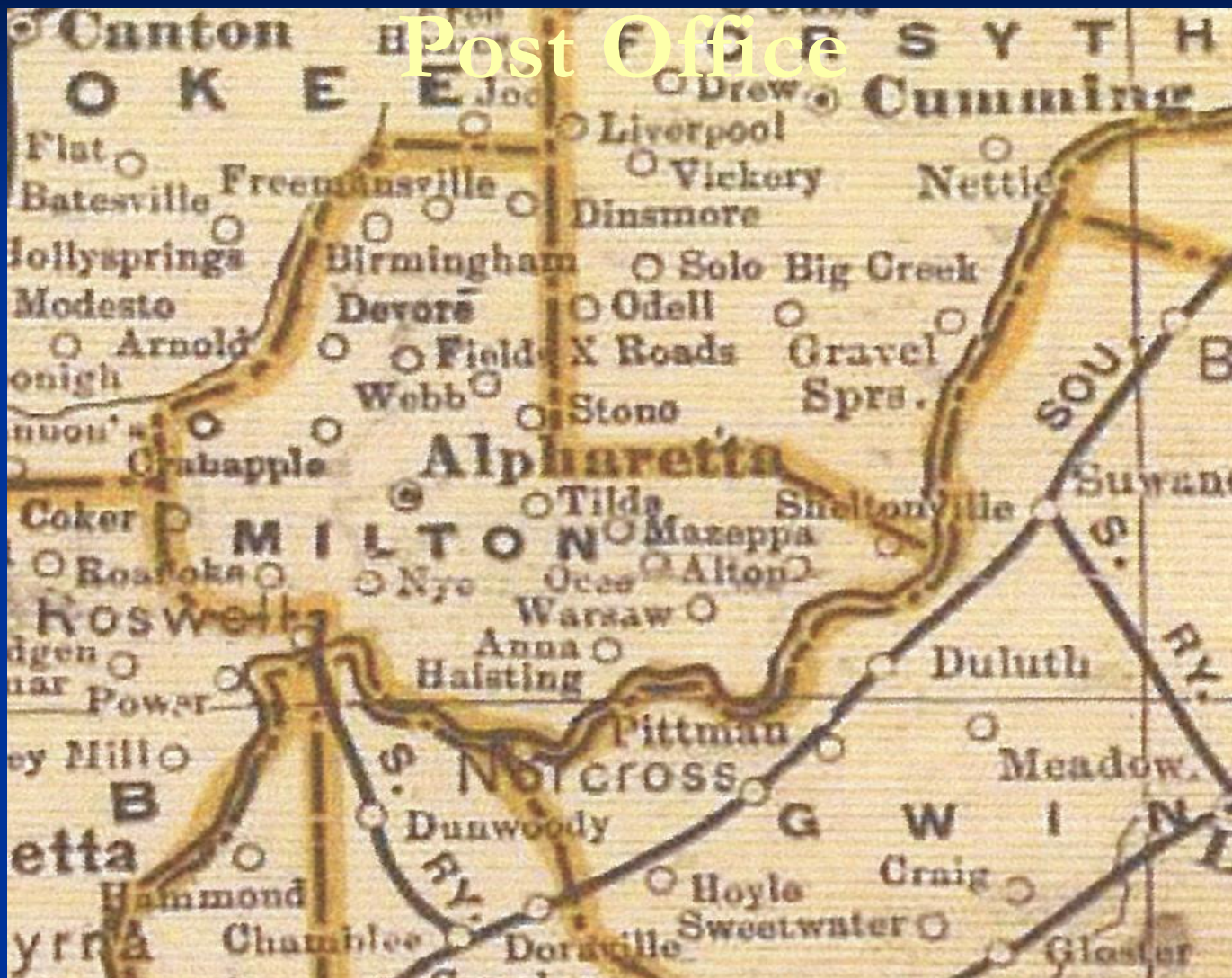


# Post Office



USGS Map 1887





1889 Central Georgia Railway Map



U.S. Coastal Survey 1865





Lloyd's Topographical Map of 1864