

# TULSA Douglass Circular News

Vol. II—No. 22

Friday, September 8, 1944

Tulsa, Oklahoma

## Tulsamerican Is in Topeka

### Crew Assigned, Plane Readied for Combat

That Tulsamerican, last B-24 built here, is at its last stop before going overseas into combat was revealed this week by Marjorie Jean Clark, Time-keeping, who had a letter from a radio operator at the Topeka Army Air Base, Topeka, Kan.

In his letter, Pfc. Clarence Beaudry told her that the crew already had been assigned and was training with the ship.

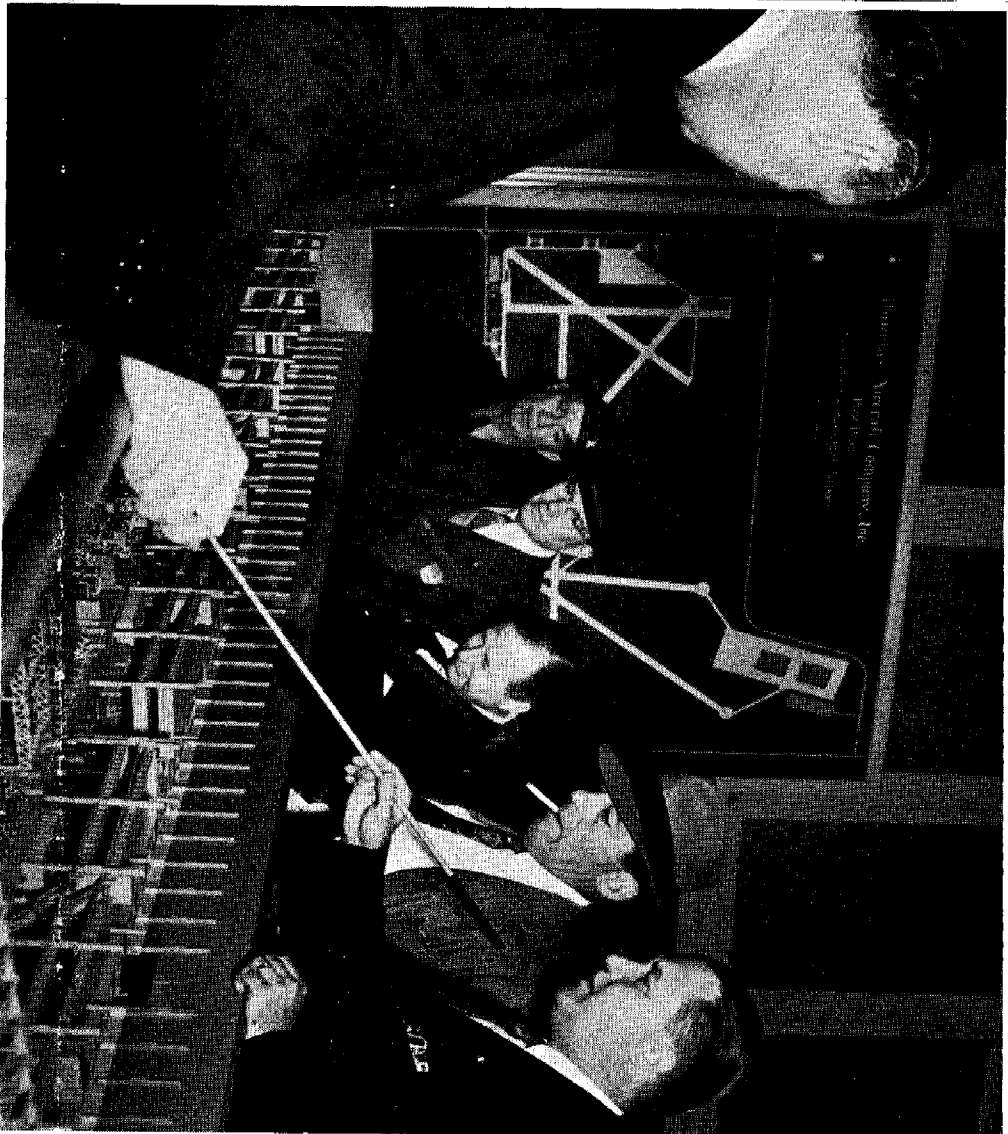
He said that he had found her name and address on the plane and thought she might like to hear where it was.

Marjorie was also the first employe to receive a letter from Birmingham when the ship was at the Mod Center there.

Later she had another note from Ray Todd in Birmingham, who wrote the first letter.

Dated August 24, it read in part: "Today the Tulsamerican came in for final inspection. It has just been modified and preflighted."

"It has been at our plant 22 days and is now getting its final shakedown. There have



Douglas Photo by Wilnot Dahlem

**DONALD W. DOUGLAS**—En route to Washington for discussions on company-government relations. Donald Douglas stopped Thursday for a tour of the plant.

## 'Old Missy' And Crew Here September 19

September 19 is the date set for the visit here of the veteran C-47, "Old Miscellaneous," and her crew. The airmen, just back from the South Pacific, where "Old Missy" has served for the last two years, will make two appearances before employes at the plant, at first and second shift lunch periods.

Heading the crew is the pilot, Capt. Frank C. Libuse, son of the clown-waiter, Frank Libuse, who delighted Tulsa audiences with his tomfoolery in "Sons O' Funs" at Convention Hall last spring. Other members of the group are Capt. Gene R. Glotzbach, Master Sgt. J. W. Gibbons, and Tech. Sgt. William E. Boffa.

### All Plant Tour

The men, who will appear at Long Beach, Santa Monica, El Segundo and Oklahoma City Douglas plants for four days before coming here, will end their tour at Chicago.

Accompanying them will be Lt. Frances Armin, pretty blonde air evacuation nurse who has flown 400 hours in

ter.  
Dated August 24, it read in part: "Today the Tusamerican came in for final inspection. It has just been modified and preflighted."  
"It has been at our plant 22 days and is now getting its final shakedown. There have been quite a few more names added, since it came to our plant."

## Knudsen Heads

### AAF Merger

The war department recently announced that the army air forces materiel and services, recently organized with Lt. Gen. Wm. S. Knudsen as director, has been redesignated the Air Technical Service Command.

Effective at midnight August 31, the AAF Materiel Command, with headquarters at Wright Field, and the Air Service Command, with headquarters formerly at Patterson field, O., cease to exist as such and their functions will be absorbed by the Air Technical Service Command.

Gen. Knudsen has been named director, and Maj. Gen. Bennett T. Meyers, former deputy assistant chief of the air staff, materiel, maintenance and distribution, and commanding general of the materiel command, has been appointed deputy director.

Consolidation as early as possible of the Air Service Command and the Materiel Command was ordered July 17 by Gen. H. H. Arnold, commanding general of the Army Air Forces, to effect economies in administration and to promote greater efficiency in the

**DONALD W. DOUGLAS**—En route to Washington for discussions on company-government relations, Donald Douglas stopped Thursday for a tour of the plant and a current report on A-26 operations. Pictured above, as they followed Plant Manager W. G. Jerrens' explanation of the conversion from B-24s to A-26s on a layout board, are B. C. Monesmith, assistant plant manager, Captain Tolle of the U. S. Coast Guard; John Rogers, Douglas vice-president in charge of sales; R. E. Gross, president of Lockheed Aircraft, Douglas, and Jerrens.



Douglas Photo by Wilmet Dahlem

## Buy Cash Bonds At Welfare Now

Cash war bonds and stamps may now be purchased from the Welfare offices, mezzanine 7, Col. 69.

The bond booth will be closed until the Sixth War Loan, which will begin on Armistice Day, November 11.

Any changes in payroll deductions affecting bond purchases must be made through the Payroll department.

## Know About Any Rental Properties?

The Housing department is anxious to have tips on rental property. If you are transferring or moving out of town and know that your apartment or house will be available, please call 4181 and report it.

development, procurement, distribution and maintenance of all air force equipment. This move brought all such air force activities under Gen. Knudsen, who is also director of production in the office of the Under Secretary of War.

## Scrap Saved Here Used by Army and Navy Hospital

Scrap aluminum salvaged by workers here is being sent to the Army and Navy General hospital at Hot Springs National Park, Arkansas.

It will be used in the orthopedic section of the hospital, to make braces for service men who were wounded overseas.

Two hundred pounds of mixed aluminum scrap of specifications requested by Captain George T. Wallace, Chief of the Orthopedic Section, have been given to the hospital.

## Employee's Brother Killed in Action

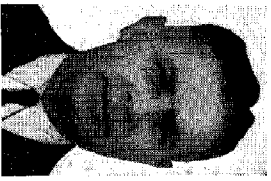
S-Sgt. Jack Laimore, brother of Dan Laimore, Plant Protection, Mod Center, has been reported killed over Germany, May 24.

A gunner on a B-17, he had been overseas since last February.

He visited the plant just before he left for overseas.

## Army Air Forces Official Dies

Michael W. Birmingham, Army Air Forces inspector, died last Friday at the Muskogee Veterans' hospital. Death resulted from heart disease.



**MIKE** was instrumental in forming the Properties section. Later he transferred to Inspection, served for a while as inspector in charge of factory operations on second shift; then was moved to his last assignment, that of supervisor of quality control.

Members of the Army Air Forces and Douglas alike feel that they have lost a valued friend and competent associate in "Mike" Birmingham. They join in expressing condolence to his widow and daughter.

Funeral services were read Tuesday.

line men, who will appear at Long Beach, Santa Monica, El Segundo and Oklahoma City Douglas plants for four days before coming here, will end their tour at Chicago.

Accompanying them will be Lt. Frances Armin, pretty blonde air evacuation nurse who has flown 400 hours in Douglas C-47 Skytrains of the Troop Carrier Command in New Guinea.

Master of ceremonies will be Ned Crawford, from the Industrial and Public Relations general office in Santa Monica, and another passenger on "Old Miscellaneous" will be Lt. Col. Clifford MacFarlane, Industrial Services Officer of the Ninth Service Command. He will be remembered by many Douglasites as the producer of "Tulsa Attacks", the show which featured Douglas planes in its recent production at Skelly Stadium.

### Gallant Fighters

Top billing goes to "Old Miscellaneous", the real star of the show.

The plane, oldest sister in the service of General George Kenny's far eastern air force, was the first transport plane in the troop carrier service in the South Pacific. On her record are 2,000 missions and 3,000 operational hours completed.

Retiring from combat, she's now wearing out engines 13 and 14.

In her cockpit is posted a note from the airmen who have known her so well: "This ship is the oldest, fastest C-47 in the Southwest Pacific, so into whose hands she falls, treat her kindly and she will always get you to your destination."

Published Weekly by the

Industrial and Public Relations  
Division

Douglas Aircraft Company, Inc.

Jean Shaffer, editor

Associates: Elizabeth Stabler, R. M. McCormick, Staff Photographer.

Contributors: Wilnot Dahlem, Ray Crowley, Jim Sears, Jack Sasser, Hal Bayer, D. W. Reynolds, Arthur Johnson, Helen Montgomery, De Lord Keister, Jim Swinney, Bernard Meierlan, Harold Carlos, Sam Knapp, J. C. Auer, Tony Young, Doris Duckworth, C. L. Nelson, Mida Dieter, Judy Moody, Charles Meek, Bill Towry, W. J. Zollinger, Men Wilson, Harold Clanton, Sylvester Tinker, Alice Tinker, Barton Tyler.

Address all communications to the editor, Airview News office.

## Au, Go On, Have A Piece Of Candy Or a Good Cigar

Cigars and candy made the rounds this week as proud Douglas papas boasted about their new offspring. Additions reported this week were:

**Carol Ann Gibbons** . . . to O. O. Gibbons, Motor Transportation Maintenance, and Mrs. Gibbons, August 29.

**Nancy Sue Anderson** . . . to C. V. Anderson, Purchasing, and Mrs. Anderson, August 26.

**Cathrine Becker** . . . to L. J. Becker, Tool and Die Fabrication, and Mrs. Becker, August 22.

**Kurt Warren Moore** . . . to O. L. Moore, Installation, Fuse-lage Halves A-26, and Mrs. Moore, August 30.

**Michael John O'Neill** . . . to J. J. O'Neill, Timekeeping, and Mrs. O'Neill, August 22.

## By Jiminy . . . They Go Fast, too

Down in Joe Stinson's basement-workshop, electric trains clatter along yards of bright brass track. Not ordinary electric trains these, but engines, pullman cars, freight carriers and cabooses which Joe has painstakingly carved by hand.

Complete miniature replicas of a real train . . . down to the steam whistle the automatic coupling, the railings, chains and steps, his tiny locomotives and cars run around tracks on which Joe has installed a complicated switching system.

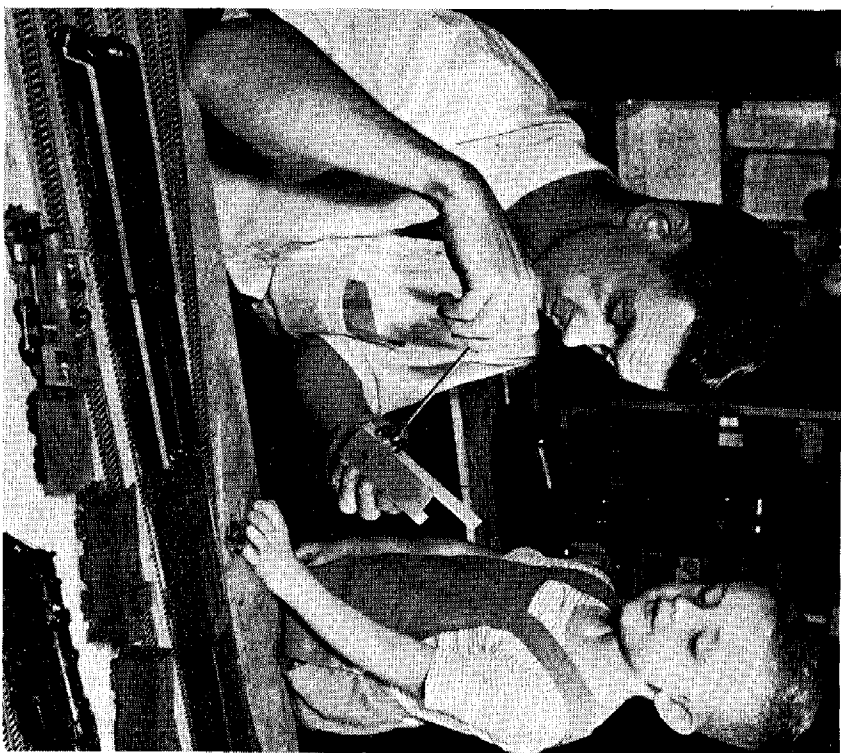
Some of the cars are made of wood covered with a shiny coat of black or brown paint; others have been first carved in wood and then cast in metal . . . part by part.

From the time he was a tiny boy, Joe has had two major interests . . . trains and planes. Now that he devotes his work hours to helping build planes in Assembly Painting, he spends his leisure hours creating and making small scale trains.

All the complicated electrical wiring, the casting, carving and assembly, he has taught himself . . . either from a book or by trial and error.

For Joe is one of the patriotic mutes who are using their agile fingers here to build war planes.

He even makes his own engineer's drawings before he starts construction on a new model. Because he can neither speak



Douglas Photo by Wilnot Dahlem

**ON GO THE WHEELS**—As his young son, Norman, watches with a critical eye, Joe Stinson, Assembly Painting, attaches the wheels to a miniature freight car he is completing. Joe carves entire electric trains from wood, or casts them in metal. He makes his own drawings. His trains are complete in every detail. Notice the old-time locomotive model in the foreground. This was cast in heavy steel.

### In the Front Office

## Sam Ogilvie In Personnel During Two World Wars

In Personnel work during two wars, Samuel James Ogilvie

## Ten Years in Aviation, Five With Douglas

In 1935 C. C. Whitlatch, now general supervisor of assembly on third shift,



WHITLATCH

signed up for an aviation mechanics course at the University of Idaho, Pocatello, where he was a student. Now in his tenth year of the flying business, he recently received his five year pin for service with Douglas. At the University of Idaho, Whitlatch and other members of his mechanics class wanted an airport, so they built one themselves after school hours, borrowing and begging grading equipment.

The following year Whitlatch went to Yellowstone Transportation Company.

The company's title was as more impressive than its equipment, which consisted of one plane.

Whitlatch was sole "mechanic and ticket agent" for charter trips and rides over the park, and also had the concession on a hangar where he sold gas and did repairs.

When the owner of the Transportation company went broke in 1938, Whitlatch returned to his parents' farm in Idaho, then set out for California to take another crack at aviation.

Until he found a job at Lockheed, he took several courses at Santa Monica Tech. In 1939

J. Becker, 1901, to O. L. Moore, Installation, August 22.

**Kurt Warren Moore** . . . to O. L. Moore, Installation, Fuse-lage Halves A-26, and Mrs. Moore, August 30.

**Michael John O'Neill** . . . to J. J. O'Neill, Timekeeping, and Mrs. O'Neill, August 22.

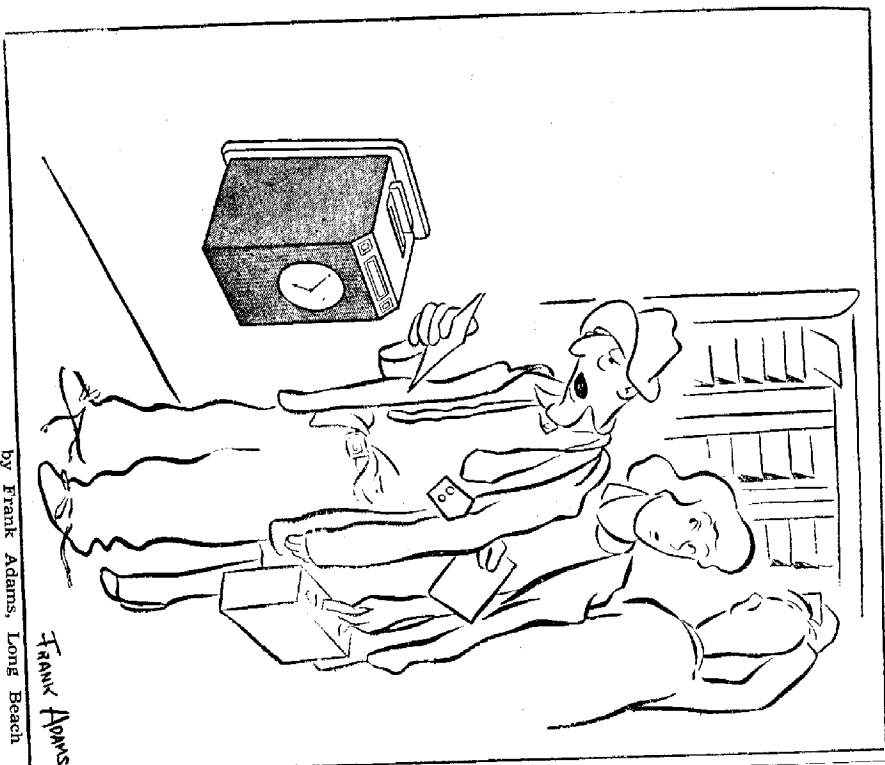
**James Darrell Burton** . . . to W. R. Burton, Central Or-der Control, and Mrs. Bur-ton, August 23.

From the careless acts of others, the wise man corrects his own mistakes. Practice safety.

triotic mutes who are using their agile fingers here to build war planes.

He even makes his own en-gineer's drawings before he starts construction on a new model.

Because he can neither speak nor hear, this hobby is even more important to Joe, for it provides him with hours of interest . . . and then there is the ecstatic admiration of his five-year-old son, Norman, as he watches his dad's tiny en-gines speed through tunnels, stations, and over bridges.



"I coulda sleep seven more minutes . . . . .!"

by Frank Adams, Long Beach

## In the Front Office

# Sam Ogilvie In Personnel During Two World Wars

In Personnel work during two wars, Samuel James Ogilvie, Personnel Manager, served as personnel adjutant of a heavy artillery regiment in France during World War I. Thirteen of his 26 months of service in the army were spent overseas where from personnel adjutant Ogilvie was promoted to captain of a heavy artillery battery.

After the Armistice, he was in charge of conveying rations to Germany for American soldiers in the army of occupation.

Ogilvie spent the next 21 years as fire prevention engineer for insurance companies, headquartered in Los Angeles.

He came to Douglas as assistant personnel office manager at the Santa Monica plant in 1941. He was assigned to the Tulsa project in June, 1941 as personnel office manager.

In June, 1942, he was made executive assistant to the plant manager and was assigned to his present duties the following March.

Ogilvie is married and has three children, Jack, Douglas and Nancy. Douglas, who is in the army, was formerly employed here, where Jack is now chief of Technical Data section of the Engineering division.

Ogilvie served as a college news photographer at the University of California in Berkeley, where he was graduated as a mining engineer.

He is an amateur radio operator, building and operating his first station in 1910.



S. J. OGILVIE

## War Dads' Gift Sent To Gruber

The shadow box originally presented to Glennan Hospital by the War Dads has been taken to Camp Gruber, it is announced by W. K. Carr, A-24 Contract Termination, president of the club.

The gift was transferred to Gruber after Glennan was turned over to German prisoners of war.

broke in 1938, Whitlatch returned to his parents' farm in Idaho, then set out for California to take another crack at aviation.

Until he found a job at Lockheed, he took several courses at Santa Monica Tech. In 1939, after eight months at Lockheed, he went to work for Douglas in Santa Monica, where his job was in Engine Installations.

He continued in that department until he came here in January, 1942, to supervise engine installations on B-24s.

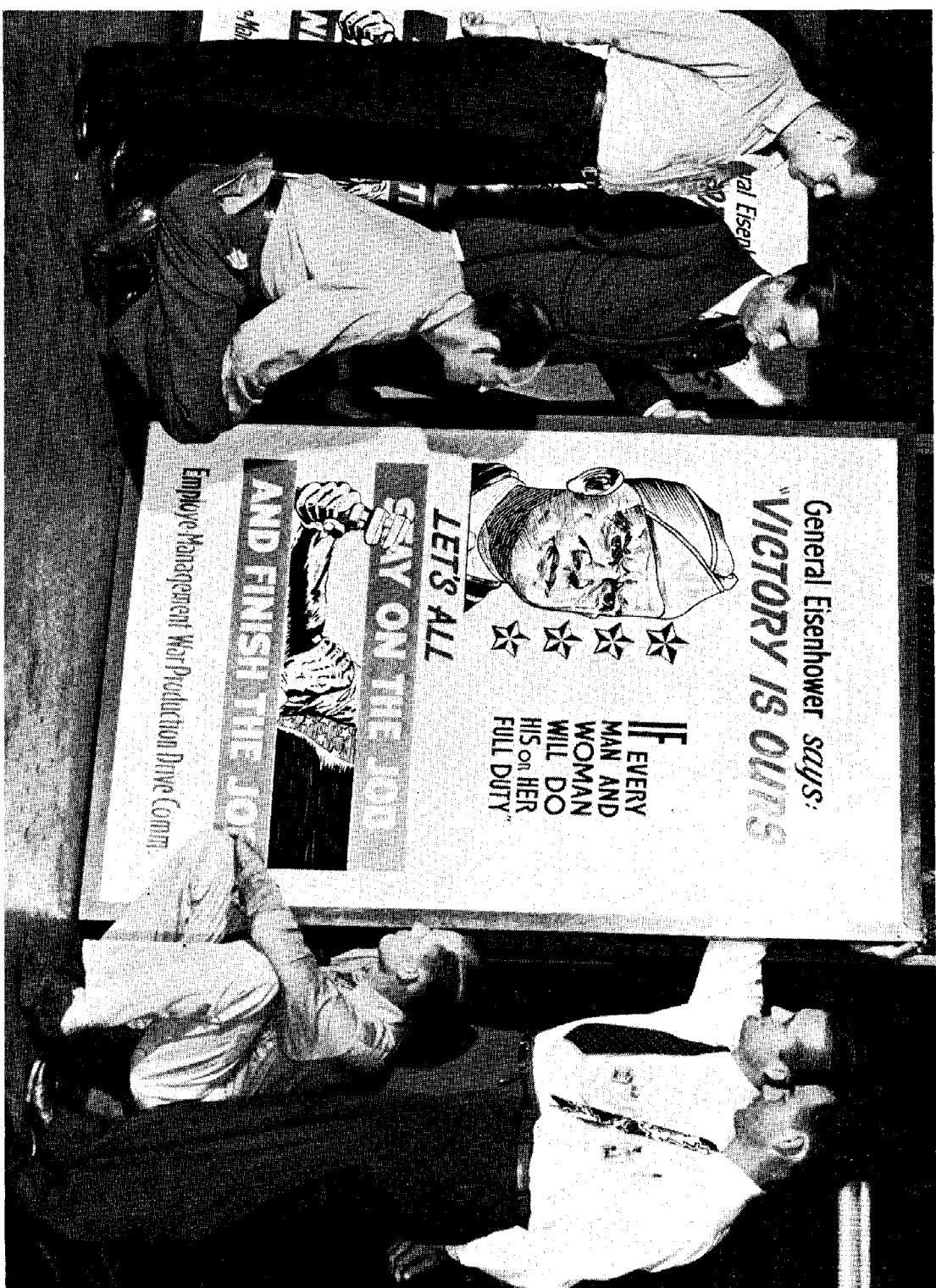
## Sergeant Writes To All Employees

Tech. Sgt. Billie D. Ezell, nephew of Levi Chambers; Machine Shop, second, wrote a letter from the 34th bomb group in England July 30, and addressed it "To the Men and Women of Douglas."

It read in part: "Dear Friends, I have just finished reading your Airview News of July 7, and I find it very interesting, so I have decided to write you a few lines to let you know how we all over here admire the great work that people like you are doing on the home front.

"I am an aerial engineer on a B-24 and I think they are swell planes.

"I would enjoy receiving letters from the Douglas employees, so if any of you find time to write me a line, I will be very glad to answer. Tech. Sgt. Billie D. Ezell, 38450074, 34th Bomb Group (H), 4th Bomb Sqdn., A.P.O. #559, % Postmaster, New York, N. Y."



Douglas Photo by Ray Crowley

**FIRST STEP**—New members of the Employee-Management Committee cast an approving eye at the posters which will launch their next program, a drive urging employees to "Stay on the Job and Finish the Job." Left to right, standing, are W. B. Bosham, Final Assembly A-26; L. G. Shearer, Personnel; Barton Tyler,

Plant Management; J. L. Tarr, Maintenance Carpenters and Painters. Kneeling, left to right, M. H. Bowers, Maintenance-Mechanical, and Paul Hiday, Inspection Service and Flight. J. T. Davis, Inspection, the other new EMC member, was unable to be present. The posters were distributed this week.

**Victory Posters**  
**Launch EMC 'Stay**  
**September 15 Deadline for**  
**Estimated Tax Declarations**

**C47 Production**  
**Releases DC-3s**  
**For Airline Use**

## It's Christmas Mailing Time For Overseas

With only 37 more shopping days, now's the time to break out the Christmas wrappings and bright stickers, and send your Christmas package to your boy overseas.

Gifts to overseas service men . . . that means army, navy, marines . . . must be sent between September 15 and October 15.

Take a good look at the mailing regulations, and stick by them, so your G. I. Joe will be sure to have a cheering package to open Christmas morning.

The box in which you pack your presents must not be over 15 inches long, or 36 inches in overall dimensions (length plus girth.) It should be made of metal, wood, fiberboard or strong cardboard, reinforced with gummed tape and tied with your strongest twine.

The box may weigh five pounds, and one may be sent each week during the 30 day period. It must be plainly labeled "Christmas Parcel".

Don't send liquids in anything that will break . . . it may spoil your packages and those around it.

According to a wide survey of men overseas these are some of the things they like best: fruit cake, in airtight cans, melba toast, prunes, figs, olives, pickles, maple sugar, deviled ham, sardines.

Candy . . . mints, caramels, peanut butter, gum drops . . . fluidless cigarette lighters, steel



Douglas Photo by Ray Crowley

**FIRST STEP**—New members of the Employee-Management Committee cast an approving eye at the posters which will launch their next program, a drive urging employees to "Stay on the Job and Finish the Job." Left to right, standing, are W. B. Bosham, Final Assembly A-26; L. G. Shearer, Personnel; Barton Tyler,

Plant Management; J. L. Tarr, Maintenance Carpenters and Painters. Kneeling, left to right, M. H. Bowers, Maintenance-Mechanical, and Paul Hilday, Inspection Service and Flight. J. T. Davis, Inspection, the other new EMC member, was unable to be present. The posters were distributed this week.

## It's Christmas Mailing Time For Overseas

With only 37 more shopping days, now's the time to break out the Christmas wrappings and bright stickers, and send your Christmas package to your boy overseas.

Gifts to overseas service men . . . that means army, navy, marines . . . must be sent between September 15 and October 15.

Take a good look at the mailing regulations, and stick by them, so your G. I. Joe will be sure to have a cheering package to open Christmas morning.

The box in which you pack your presents must not be over 15 inches long, or 36 inches in overall dimensions (length plus girth.) It should be made of metal, wood, fiberboard or strong cardboard, reinforced with gummed tape and tied with your strongest twine.

The box may weigh five pounds, and one may be sent each week during the 30 day period. It must be plainly labeled "Christmas Parcel".

Don't send liquids in anything that will break . . . it may spoil your packages and those around it.

According to a wide survey of men overseas these are some of the things they like best: fruit cake, in airtight cans, melba toast, prunes, figs, olives, pickles, maple sugar, deviled ham, sardines.

Candy . . . mints, caramels, peanut butter, gum drops . . . flutless cigaret lighters, steel

## Victory Posters

## September 15 Deadline for Estimated Tax Declarations

## Launch EMC 'Stay

## Estimated Tax Declarations

## C47 Production Releases DC-3s For Airline Use

posters which will be distributed to all employees on the job and Finish the job." Left to right, standing, are W. B. Basham, Final Assembly A-26; L. G. Shearer, Personnel; Barton Tyler,

## Victory Posters Launch EMC 'Stay On Job' Project

"Victory is ours," says General Ike Eisenhower, "if every man and woman will do his or her full duty."

His words appear on the seven posters distributed this week by the Employee-Management committee, which has taken on the task of delivering to employees the message of the War Production Board . . . "Stay on the job and Finish the job."

The posters, painted red, white and blue on boards which stand six feet high, will be placed at the entrance gates of the plant and Modification Center.

At the thirty-ninth meeting of the EMC August 30, gold pins, symbol of membership in the EMC, were presented to each of the following new members by W. G. Jerrens, plant manager: Paul Hiday, Inspection Service and Flight; M. H. Bowers, Maintenance-Mechanical; J. L. Tarr, Maintenance Carpenters and Painters; Barton Tyler, Plant Management Staff; L. G. Shearer, Personnel; and W. B. Basham, Final Assembly A-26. J. T. Davis, seventh new member, was not able to be present. At the August 30 meeting Barton Tyler was elected chairman by acclamation, and Art Williams, GFE Control, was made co-chairman, also by acclamation.

## September 15 Deadline for Estimated Tax Declarations

Your declaration of estimated income and victory tax must be filed by next Friday, September 15. This will be the second installment of the estimated tax you paid on April 15 . . . if you paid one then.

If you did not file a return then, you may be eligible now.

For you must file a declaration, if you are . . .

1. **Single or Married But Not Living With Spouse** (Whether or not head of a family), and expect to receive in 1944.

(a) more than \$2,700 of wages subject to withholding; or

(b) more than \$100 of income from all other sources, provided your total income is expected to amount to \$500 or more.

2. **Married and Living with Spouse**, expect to receive in 1944, either alone or together with spouse.—

(a) more than \$3,500 of wages subject to withholding; or

(b) more than \$100 of income from all other sources, provided your total combined income is expected to amount to \$1,200 or more; or

Your total separate income is expected to amount to more than \$624.

This is only an estimate. If your estimated tax is substantially increased or decreased as a result of a change in your income or family status, you should file a new declaration on or before the next filing date, September 15, or Decem-

ber 15. Service and Flight. J. T. Davis, Inspection, the other new EMC member, was unable to be present. The posters were distributed this week.

ber 15.

The new declaration should be marked "Amended" and must be filed with the Collector of Internal Revenue with whom the original declaration was filed.

Any increase or decrease in estimated tax should be spread evenly over the remaining installments.

Even though you are not required to file a declaration on April 15, you may have to file one on September 15, or December 15, if your expected income increases or your marital status changes in the meantime.

In such a case, the estimated tax should be paid in equal installments over the remaining quarters of the year.

## He'll Split \$20 With the Finder

A \$20 bill was lost Friday by C. D. Rule, Maintenance-Plumbing and Sheet Metal, and he is offering to split it with the finder.

It was dropped during the 11:15 lunch period, between his department and the cafeteria.

## C-47 Production Releases DC-3s For Airline Use

Reconversion of DC-3 transports, released from war service by the Army to supplement hard-pressed airline fleets in handling an unprecedented volume of domestic traffic, is now under way at Douglas Santa Monica plant, the company announced.



Douglas Photo by Ray Crowley

**SANTA CLAUS, '44 VERSION**—Marie McGovern, Forms and Procedure, knows that gifts for overseas service men must be mailed between September 15 and October 15, so she is packaging hers early to avoid the last minute frenzy. Picture, bill-fold, toilet articles, fruit cake and candy are for her husband, First Lieut. Frank McGovern, who's in England with the 956th Ordnance Motor Vehicle Distributing Company.

some of the things they like best: fruit cake, in airtight cans, melba toast, prunes, figs, olives, pickles, maple sugar, deviled ham, sardines. Candy . . . mints, caramels, peanut butter, gum drops . . . fluidless cigaret lighters, steel having mirrors, wallets with windows for pictures, chewing gum, pocket size picture frames, writing paper. Don't send: chocolate candy, fresh fruit, crumbly cookies, ordinary cake, liquids in glass bottles, lighter fluid, matches . . . and positively no liquor.

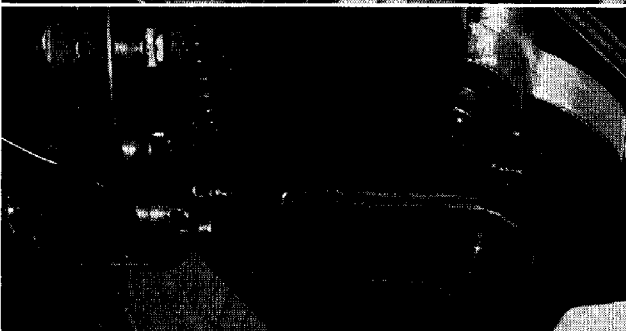
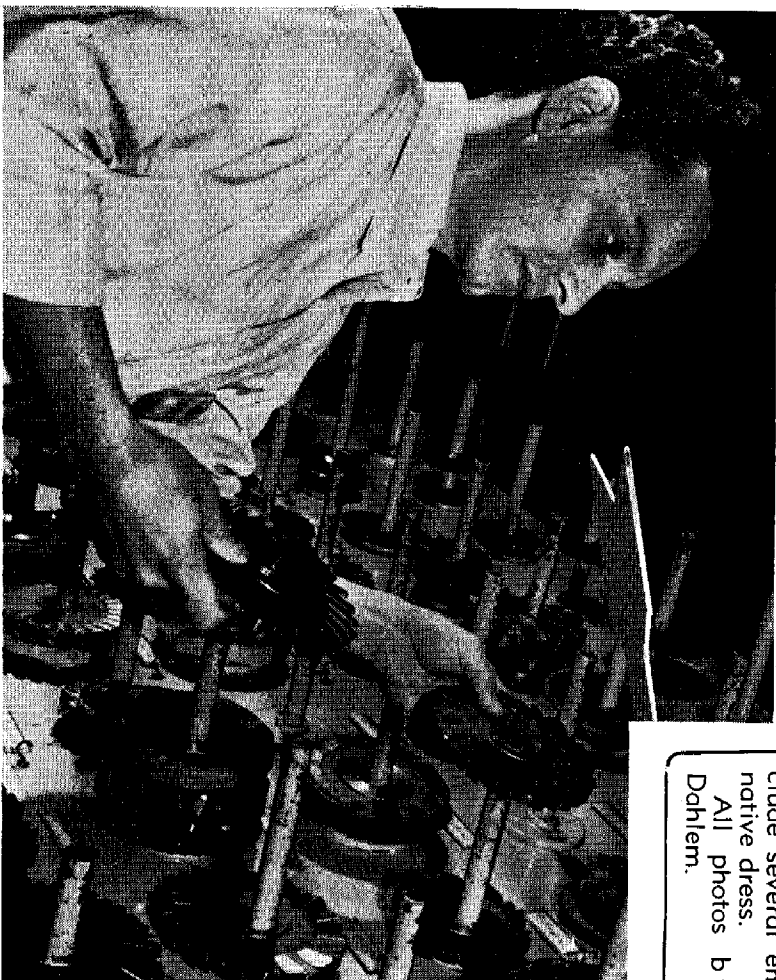
★ ★ ★



Vinson Lackey, Tooling Inspection, tells in "Hiawatha" meter the story of Indian arrowmakers who hunted, fished, and fought on this plant site . . . and whose descendants are arrowmakers.

**LACKEY**  
Pictures at an Osage dance to pray for peace include several employees in native dress.

All photos by Wilmot Dahlem.



On the prairie south of Bird Creek, in northeastern Oklahoma. At the line between two nations, Stands a monstrous mile-long building.

Near is Cherokee Ca-too-si, And the place the Creeks called Tul'see Where the Lutse-poka people Danced their bangas by the river.

In the time of our grandfathers



In northeastern Oklahoma  
At the line between two nations,  
Stands a monstrous mile-long building.

Near is Cherokee Ca-too-si,  
And the place the Creeks called Tul'see  
Where the Lute-poka people  
Danced their bangas by the river.

In the time of our grandfathers  
Wagon loads of dance-bound tribesmen  
Used to cross this pleasant prairie  
Every year in green-corn season.

Now the roads again are crowded,  
But this time the throngs are workers  
Going to and from their labors  
In that monstrous mile-long building.

Wide it sprawls across the prairie;  
Flanked by runways, tracks and hangars,  
And a steel fence, closely guarded,  
For within war planes are builded.

And among its busy thousands  
You see many sons and daughters  
Of the Oklahoma Tribesmen  
Who, in time past, roamed these prairies.

Even as their great-grandmothers  
Seasoned arrows for their warriors,  
Dried their shields and stretched their bowstrings  
They, today, are making weapons.

Making weapons for their warriors,  
With the zeal of their grandmothers,  
While the warpath of their kinsmen  
Stretches far across the oceans.



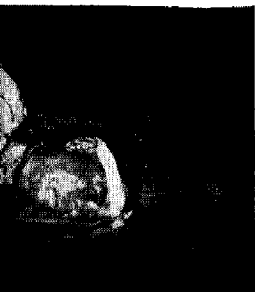
# Wm. Macbeth



Not from tribal lore and custom  
Must these newer arms be fashioned;  
But from plans of white men's making,  
And from careful calculations.

So, from college, office, oilfield,  
Shop and farmstead came the Quapaw,  
Seminole, Miami, Osage,  
Choctaw, Cherokee and Shawnee.

Came the Creeks, Pawnees and Otoes,



Not from tribal lore and custom  
Must these newer arms be fashioned;  
But from plans of white men's making,  
And from careful calculations.

So, from college, office, oilfield,  
Shop and farmstead came the Quapaw,  
Seminole, Miami, Osage,  
Choctaw, Cherokee and Shawnee.

Came the Creeks, Pawnees and Otoes,  
Poncas, Kiowas, Comanches,  
Chickasaws and many others,  
Their full strength and skill to offer.

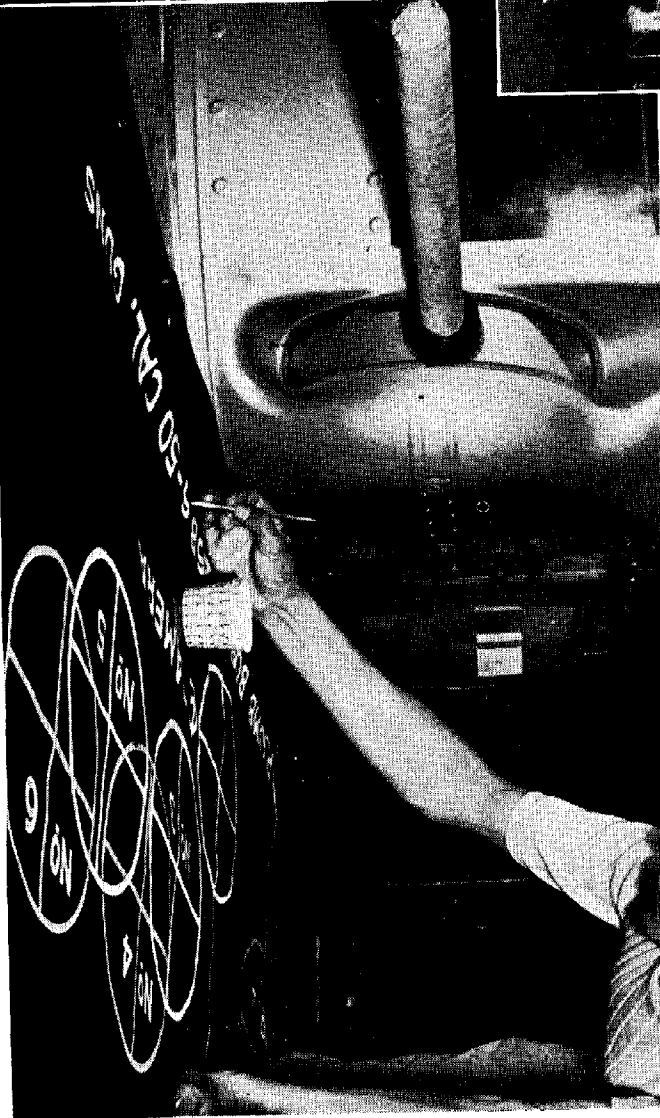
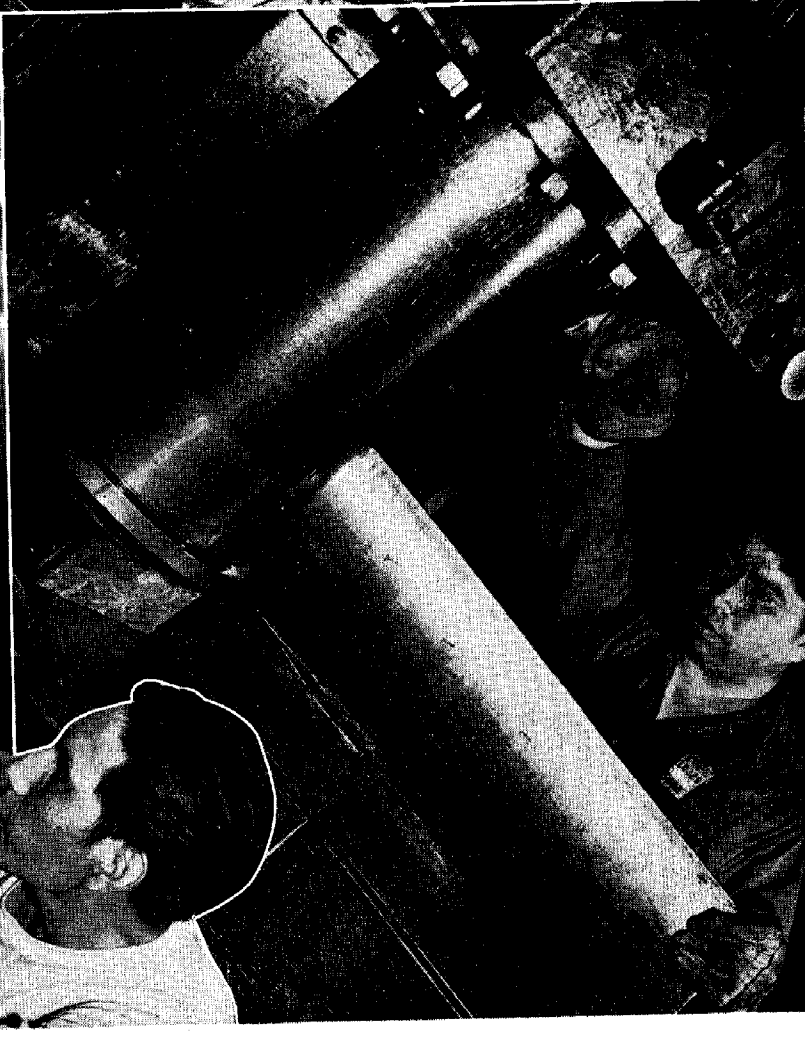
Now instead of deftly trimming  
Arrow feathers for their fighters  
They shape fairings, lines and contours  
That will speed the war bird's winging.

Shunatona fashions temples,  
Amos Deo works in metals,  
Archie Blackowl paints with stencils  
And Sapulpa makes assemblies.

Berryhill is in a tool crib,  
Alice Tinker splices cables,  
Hard at fighter plane construction  
Works the redman, Norm Bigeagle.

In the dark eyes of these people  
Smoulders something that reminds one  
Of the eyes of their great-grandfathers  
As they tested out their war-bows

So these first real Oklahomans  
Come to this great mile-long building  
On the prairie south of Bird Creek  
At the line between two nations





# THEIR SUGGESTIONS SPEED THE WAR

## Women Snare Big Share of August's Plant Suggestions

Two women, Ann McCleskey and Ruth Bowen, walked away with two thirds of the Plant Suggestions top awards for August, with Paul Navarre the third member of the trio. A pocket size booklet of photographs containing the "Common Vendor" parts in numerical order, for use in expediting these parts, was suggested by Ann McCleskey, Time Standards.

One hundred of the books have been distributed, and there is a demand for many more, since they aid in expediting the handling of castings between departments.

It's estimated that these books will save 100 hours each per year, a saving of 10,000 hours.

Paul Navarre, Fuselage Structure Assembly A-26, developed a drill jig which enables 25 parts to be put together in one operation, instead of the four previously necessary before the camera

129-4 nose sheet, 2 web, 10 and 8 rivs  
straight line while riveting.

### "C" Awards

G. E. Baile, D106, new form and procedure for computation of employee vacation payments, TS-491; C. L. Beck, A. M. Mulkey, D143, template for locating heat outlet clips R. H. upper box assembly.

C. L. Vernon, D283, inspection gauge for checking part #4192887 and -1; Criss Pruett, D342, metal collar for inspection mirror handle to prevent breakage; H. O. Bond, D374, C. C. Myers, D406, procedure for orders calling out project sketches—stamping p.s. on bench orders in large letters to eliminate errors; C. V. Ruddy, D377, improved procedure to provide necessary information for tool storage record files.

D. J. Stevens, J. W. Case, D385, method for protection of and damage to nacelle fuel cells; Wilma Skinner, D400, new form TS-358—rejection and rework change notice; W. H. Clausen, D401, protective pad shears to prevent scratching material; V. M. Woolridge, D402, special pin router guide for trimming part #2204632.



Douglas Photos by Ray Crowley

## QUIET! GENIUS AT WORK!—Winners of "A" Awards for August were Ruth T. Bowen, Metal Fittings, upper left, who designed a tool to form and solder the hydraulic fluid strainer for the A-26; Paul Navarre, Fuselage Structure Assembly A-26, upper right, who made a drill jig which combined four operations in one; and Ann McCleskey, Time Standards, lower right, whose pocket-size book of "Common Vendor" parts in numerical order, for use in expediting these parts, was suggested by Ann McCleskey, Time Standards.

# Classified Ads

The Classified Ad section of Airview News is offered free of charge to all Douglas employees. Ads should be submitted in writing to Airview News office not later than Monday at midnight for publication the following Friday.

No ads will be accepted for private business enterprises. They should be no longer than 30 words, not including the advertiser's name and address.

Print legibly on the ad your name, department, shift, home address, phone number, if any, and the time or times outside of working hours at which you wish to be contacted. Plant telephone numbers will not be used. All ads are subject to rewriting, editing, and/or rejection by the editor.

## C-47 Averages 15.9 Hours Per Day, Sets Record

A new record of aircraft utilization has been rung up by C-47 Skytrain No. 8493 with the Western Air Lines fleet operating in the Alaska Wing under contract to the Air Transport Command.

During April and May, the Skytrain averaged 15.9 hours per day on the run between Great Falls, Mont., and Fairbanks, Alaska.

In a letter of commendation to L. D. Carlson, superintendent of the military cargo division of Western, America's pioneer airline, Col. Harry J. Kielling, wing chief of staff, pointed out that Skytrain No. 8493, in breaking the record, had surpassed the daily average of 15 hours which has been the goal of aircraft utilization in the Alaskan Wing.

## Did You Lose a VFW Pin at Mod?

A Veteran of Foreign Wars pin has been found at the Mod Center, and may be claimed at the Plant Protection office.

### FOR SALE

LATHIE—Small lathie, circular saw, jig saw, jointer, motor, shafting. J. Roy Thompson, 2-5678.

RUG—All wool rug, 8' by 10 1/2', and matching pad. Lucille Shelby, 1821 N. Atlanta ct., before 2:30 p. m.

FURNITURE—Four rooms blond furniture, Wisnaker Modern and Heytric refrigerator. Phone 9-6478 after 4 p. m., all day Sunday.

PING PONG TABLE—Table in good condition, in crate, \$22.50. Also, baby bathette, \$8. T. S. Higginbotham, 2043 S. Birmingham pl.

JACKET—Lady's new California styled sport jacket, W. McDaniels, 1520 N. Sixty-fourth E. av., phone 9-6770.

LIGHT PLANT—Kohler light plant, 800 watt, 110 volt A. C., 144 N. Delaware av., phone 4-6588 after 4 p. m.

BUICK—1941 Buick club coupe, 36,000 miles, four new re-caps, excellent condition, call 3-2217 after 5 p. m.

FURNITURE—Den furniture, studio couch, drapes to match, rug, book case, radio combination with stand, \$130. Frank Bruce, 9-3723.

MOTOR SCOOTER—1942 modelushman Auto-Glide, like new, equipped with lights, generator, side car, two-speed gear shift, four ply tires, \$250. A. B. Stewart, 168 N. College av., phone 6-3404.

HOME—Five room frame, newly decorated, two blocks from school and bus, plumbing one year old, roof four years old, \$3,200, \$1,500 down, \$25 per month. \$100 chicken house and fence included, five large shade trees. W. F. McClure, 1655 N. Atlanta pl., 4-3496.

DODGE—1939 Dodge four-door sedan; new tires, two six-ply, new paint, radio and heater. Motor excellent. M. H. Sever, Glenpool, Okla.

### WANTED

SHELLS—25 caliber shells, any amount. Call B. G. Towry, 6-6434.

BICYCLE—Girl's model bicycle in good condition. W. M. Rice, 415 S. Seventh E. av., phone 6-1819

SKATES—Pair of white figure skates, size 5. Margaret A. Lopp, call 5-2523, for removing grease from plexiglass

ings between... the e  
It's estimated that the s  
books will save 100 hours each  
per year, a saving of 10,000  
hours.

Paul Navarre, Fuselage  
Structure Assembly A-26, de-  
veloped a drill jig which en-  
ables 25 parts to be put to-  
gether in one operation, in-  
stead of the four previously  
necessary before the camera  
door plate assembly could be  
put on the plane.

Average time saved per ship  
by Navarre's suggestion is es-  
timated at 18 hours.

Ruth T. Bowen, Metal Fit-  
tings, designed a tool to form  
and solder the hydraulic fluid  
strainer for the A-26. Former-  
ly, there was no tooling for  
this, and the operation was  
done by hand, with about 50  
per cent rejections on parts  
encountered.

With this form tool, parts  
can be formed and soldered  
in 42 minutes less time, with  
no rejections.

### "B" Awards

H. D. Elderton, D361, use of the re-  
cord copies of the rework rejection  
and procedure for controlling re-  
jections, B. H. Ellison, D401, method  
and device for burring tubing to el-  
minate hand operations; C. G. Kim-  
berlin, D401, card file system for pro-  
duction orders to save time and ma-  
terial.

C. G. Kimberlin, D401, change in  
procedure to conserve material for cut-  
ting stock for part #3203395; H. L.  
Gilbert, D405, method for elimination  
of inner splice in fabrication of part;  
N. B. Wallace, D405, adjustable back-  
stop for use on flattening dies and  
other standard equipment; F. M. Mans-  
field, D405, special fly cutter for mil-  
ling machine.

G. O. Welch, D406, lathe fixture for  
holding part; Kathleen Milligan, D406,  
special collet for held internal grinder  
for part; Nathan Blaney, D406, milling  
for slotting part; H. R. Saville,  
D408, forming die for part #1143065;  
J. O. Smith, D452, fixture for produc-  
ing chrome plating to increase produc-  
tion; H. A. Schnur, T. E. Clark, D555,  
nose wheel shimmy dampener; A-25  
fixture for testing; D555, tilter cap test  
fixture; Dean Gesslin, D555, tilter cap test  
fixture; D-652-05384-ST; Dean Gess-  
lin, D555, tool for inserting seats in  
shuttle valves; E. G. Libby, D557, hold-  
ing fixture for removing lugs from  
instruments to prevent damage to in-  
struments; E. G. Libby, D557, holding fixture

on bench orders in late  
eliminate errors; C. V. Ruff, D571, im-  
proved procedure to provide necessary  
information for tool storage record  
files.

O. D. Stivers, J. W. Case, D385, mo-  
thed for protection of and storage of  
malleable fuel cells; Wilma Skinner, D400,  
new form TS-538-rejection record re-  
work change notice; W. H. Clausen,  
D401, protective pad sheets to prevent  
scratching material; V. M. Woodside,  
D402, special pin router guide for trim-  
ming part #2204632.

Lucien Boien, D404, change of air  
hose connection on drop hammers for  
convenience and safety; C. R. Dick,  
D404, safety catch for ice box lids; T.  
J. Thurber, D404, light installation and  
relocation of switches on dehydrator for  
easier operation; E. R. Cox, Tom Dyder,  
D405, flange form die-replaces hand  
forming.

N. B. Wallace, D405, special drill vise  
for washers, bushings, tubes, etc., for  
reaming, boring, or tapping; F. M.  
Mansfield, D405, milling fixture for cut-  
ting 1/2 slot in cable; F. M. Mansfield,  
D405, drill jig for drilling .193 diameter  
hole in shaft for switch box; A-26  
for instrument panels to prevent dam-  
age to pluging ends of tubing for  
pressure check; Alvan Smith, Walter  
Lewis, D632, fixture for holding #5122-  
F. M. Mansfield, D405, drill jig for  
part #3123959-24 eliminates layout work;  
Raymond Morse, D406, tool for broach-  
ing-guide to hold broach in line; E.  
L. Wilson, D408, special clamp for hold-  
ing part #5153137-38 and 59 on form  
block, to hold each end of part in jig;  
H. R. Saville, D408, forming dies for  
part #155780-34 and 55; D. S. Cham-  
bers, J. M. Butler, D411, electric weld  
fixture-to turn part which is arc weld-  
ed for continuous weld.

Daisy S. LaRue, O. A. Vanskike,  
D451, adaptor tool for one shot ma-  
chine for riveting C-87 air duct; D. J.  
Lampson, D451, striped punch hold-  
er for one shot machine; F. A. Stapp,  
D552, tool for inserting bolts on  
bracket assembly; C-47; V. E. Thomas,  
D553, R. C. Crossley, D557, quick tester  
for pilots directional indicator (C-1);  
H. A. Schnur, D555, jig to set revol-  
ving degree of shaft in neutral position  
on A-26 main landing gear selector  
valve; U. C. Leuch, D556, sump test  
tank for testing sump on engines that  
lack; T. H. Kimball, D562, redesign of  
filler cap #40B1712 to make an air  
tight joint.

G. E. Conlisk, D562, gauge for drill-  
ing and riveting bulkhead at station  
#156 to save time locating the #515742  
angle; B. H. Crook, D632, holding tool  
D-652-04323 D.P. to be used on C-85-  
5153178-400 AJ to hold closing channel  
H. A. Schnur, D555, jig to set revol-  
ving degree of shaft in neutral position  
on A-26 main landing gear selector  
valve; U. C. Leuch, D556, sump test  
tank for testing sump on engines that  
lack; T. H. Kimball, D562, redesign of  
filler cap #40B1712 to make an air  
tight joint.

O. T. Smallwood, D635, improved  
type mill fixture for part #5343117,  
A-26; G. J. Shibley, D635, combination  
parallel and toolmakers clamp; D-652-  
04270-GTX; E. T. Finley, D635, change  
design of tooling for part #2143812 from  
single to double run to save material.  
G. D. Wynne, D645, special form  
block to form part #2204154 in one  
operation; C. D. Rule, D706, improve-  
ment in moving dispensers to save  
time and material; E. W. Watkins,  
D710, change in elevation of gasoline  
tanks on stand by fire pumps for more

efficient operation and safety.

"D" Awards  
Cleona F. Kent, D105, method of  
control for numbering D109, rubber  
stamps for use in making file en-  
tries; B. C. Mullens, D201, installation  
of warning whistles in caterlars for  
lunch periods.

A Veteran of Foreign Wars  
pin has been found at the Mod-  
ern Center, and may be claimed  
at the Plant Protection office.

J. B. Bender, D614, screw driver at-  
tachement for drill press for assembling  
P.B.T.'s when slotted screws are used;  
Lida N. Whitten, D645, rubber scraper  
for removing grease from Plexiglass  
form block and parts; D. W. Hawk,  
D646, stop for entrance door to depart-  
ment #445 and #446 safety; S. L. Wil-  
liams, D651, improved type door han-  
dle for convenience and safety.

R. V. Hill, M. C. Kiser, D651, pro-  
cedure for running ditto copies of tool  
outlines to save time; L. C. Williams,  
D701, extension of exit lights for better  
visibility for safety; D704 square head  
T. W. Wilkins, D704 square head  
wrench adaptor for tightening square  
head bolts; B. J. Reinhard, D706, im-  
proved type of sheet metal rack for  
convenience and safety.

Honorable Mention  
N. B. Lester, D106, procedure of  
cutting bond plates-elimination of the  
denomination number, for sorting and  
D106, index the book; R. Brown, D109,  
distributing mail; Seth H. Brown, D109,  
improved type rack for handling time  
cards; Onetta Schaefer, D141, built-in  
ink wells for transportation depart-  
ment counter.

Audrey LeBaron, D419, painting  
modification ambulance white for easier  
identification on highway for safety;  
J. I. Dueket, D201, telephone booths for  
public phones in assembly building;  
F. S. Maney, D255, additional ventila-  
tion in blueprint room.

Opal Stanart, D263, dust shield be-  
tween inspection and power machines;  
C. B. Lacey, D283, magnet to recover lost  
parts under gratings in plating depart-  
ment; Mary M. Miller, D301, typewrit-  
ing erasing shield.

Blanchette W. Siler, D377, printed forms  
to replace type typed memos to AAF of  
status change of tools; Earl Young,  
D405, provide containers for welding  
labels to improve housekeeping.

A. B. Schnabel, D411, extension con-  
trol panel for upright Lincoln electric  
welders; M. W. Hales, D451, special  
quenching basket for heat treating wing  
pins; F. S. Green, D544, installation of ad-  
ditional lighting equipment at gun  
range; R. C. Manning, D554, device to  
check timing on manual operated side  
trigger on top turret guns; E. G. Libby,  
D557, improved procedure for decaling  
instruments.

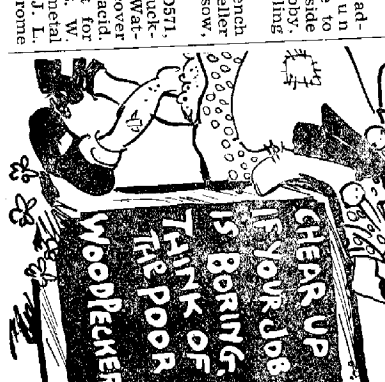
WANTED  
SHELLS-25 caliber shells, any amount.  
Shell B. G. Towry, 6-6434.  
BICYCLE-Girls' model bicycle in good  
condition. W. M. Rice, 415 S. Sever-  
tich E. av., phone 6-1819  
SKATES-Part of white figure skates,  
size 5. Margaret A. Lopp, call 5-2525,  
1421 N. Denver av.

WILL TRADE  
CARTRIDGES-22 cartridges, will trade  
for golf balls. T. C. Wier, 1907 W.  
Forty-first st., call 5-0273 after 4:30  
p. m.

FOR SALE OR TRADE  
BED-Solid maple twin bed, will sell  
or trade for double bed. W. Mc-  
Daniels, 1520 N. Sixty-fourth E. av.,  
phone 9-6170.

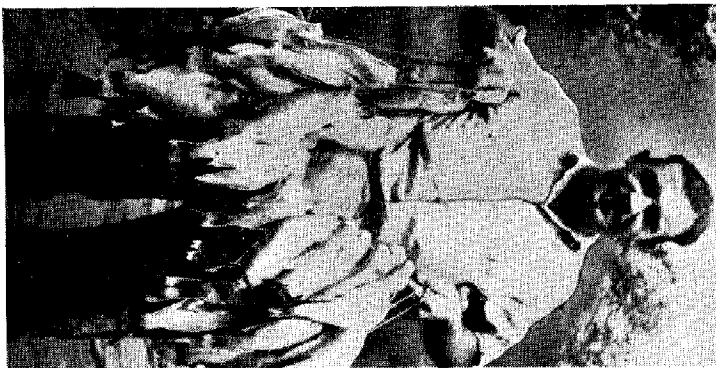
Reward Offered  
For Her Jacket  
A green corduroy suit jacket  
was lost last week at column  
87 by I. E. Gammill. Inspec-  
tion A-26 Assembly. She is  
offering a reward for its re-  
turn, and may be reached at  
phone 6-9862.

OPHELIA . . . . by Dwig



## Two Play With One Ball In Golf Tourney Sunday

Amid much kibitzing from their fellow-players, 75 teams of the Douglas Golf club will tee off Sunday in a special "scotch" twosome tourney at McFarlin. With the low-scoring golfers being teamed with the club's high scoring members, the



\*players will rotate stroking the ball. On the first tee, members of a twosome will flip a coin to determine who will tee off. From there on, they will alternate strokes.

A player, failing to show for the tourney, will automatically disqualify his team. Members of twosomes should agree on a mutual playing time and arrange foursomes from the club's membership roll.

Prizes will be awarded to the four twosomes with the lowest net scores.

## Gwin, Strauss, Roberts Stay in McFarlin Tourney

Ted Gwin, General Accounting, highly-favored entry to win the McFarlin annual golf tourney, moved into the third round of play and will play the low-scoring barber, A. E. Foster.

Col. H. A. Strauss, Army Air Forces, playing a steady game in D flight, is now in the semi-finals.

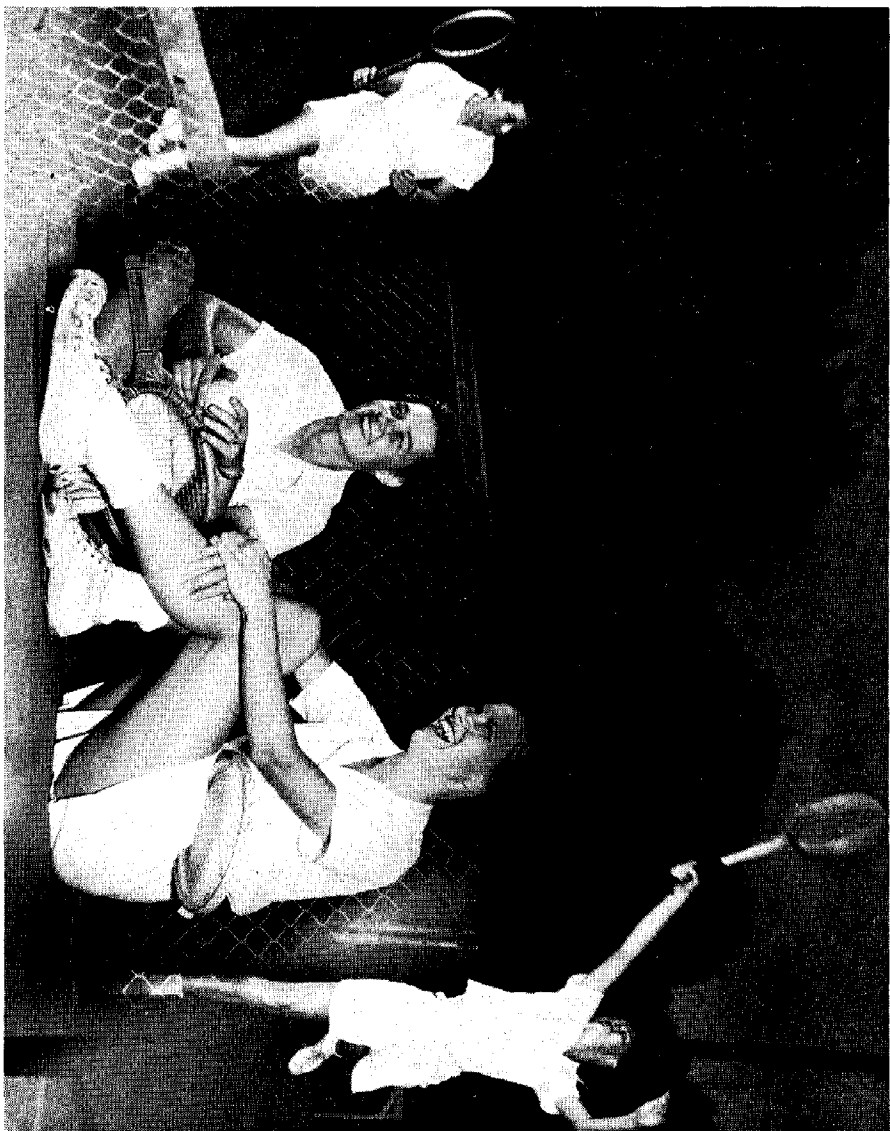
Howard "Cotton" Roberts, Parts Supply A-26, is in the quarter-finals of the A flight.

## Beware 'Sucker' Bets on George

Golfers, don't offer J. B. George, Fabrication Supply,

## They Can Talk About Fish that Didn't Get Away

A party of six Douglas em-



Douglas Photo Montage by R. M. McCormack

**THEY DOOD IT**—Racket busters Marjorie Yetman, Planning, left, and Tudy Welp, Central Order Control, netted top honors for Douglas in the Tulsa Tribune's city tennis tournament last week at Tracy Park. Superwoman Yetman smashed her way to victory in the women's singles, paired with Roy Traband to win the mixed doubles, then teamed with Tudy to down Stella Baugh and Mary Sisney in the Women's doubles. Photographer Bob McCormack's montage displays the girls' fine... uh, fine tennis form.

## Electrics Tally Three Runs, Win

Johnny Neighbors, Time Standards, garnered the lone two hits off the tantalizing slants of Sgt. Lefty Spahn, Cam Gruber's hurler, last Sunday. But Atlas Electric nine scored three runs to the soldiers' one to win the game.

## Mixed Bowling League Teams Organize Now!

Do you want to bowl in the Douglas mixed league? If you do, organize your team and call Toby Young, Recreation Manager, 4156, immediately. There is alley space

## Bowling

Team	SWINGSTERS	Won	Lost
B-T Trainers	.....	4	0
Air Express	.....	4	0
Pea Shooters	.....	4	0
Tornadoes	.....	3	1
Cellar Dwellers	.....	3	1
Invaders	.....	2	2
Night Owls	.....	2	2
Bullets	.....	1	3
Flight Line	.....	1	3
Controllers	.....	0	4
Paratroops	.....	0	4
Bobbers	.....	0	4
High 10, M. S. Karr, Pea Shooters, 244.	.....	0	4

# They Can Talk About Fish that Didn't Get Away

A party of six Douglas employees and their families found their fishing talent quite profitable recently in a near-by lake. The group caught 66 fish. Most of the catch was a crappie supplemented by a few catfish.

In the group were Wilbur C. Baze, Final Assembly, Mod Center; his wife, Addie Baze, Central Order Control, Mod Center; Oliver N. Burris, Templets; his wife, Chloie Burris, Central Order Control, Mod Center; Craig Blevins, Tooling Inspection, and Mrs. Blevins.

The most common type of rod, the lowly cane poles, were used by members of the fishing party to snag their catch. One member of the party was kept busy baiting hooks with live minnows while the others fished to their hearts content.

# Still Time Left To Bring Books

One more day remains in which books may be contributed to the Merchant Marine drive, for final collection will not be made after 3:30 p. m. tomorrow.

Leave your books, fiction or non-fiction, in the boxes provided at the walk gates on the east side, the cafeteria and lobby gates on the west side, and at the walk gates at the Mod Center and Expo Grounds.

# Beware 'Sucker' Bets on George

Golfers, don't offer J. B. George, Fabrication Supply, any "sucker" bets — for this golfing new start shot an eagle three on McFarlin's par five—fifteenth hole, 464 yards. Incidentally, George marked-up an 82 for 18 holes.

arts supply A-20, is in the quarter-finals of the A flight.

Johnny Neighbors, Time Standards, garnered the lone two hits off the tantalizing slants of Sgt. Lefty Spahn, Cam Gruber's hurler, last Sunday. But Atlas Electric solders scored three runs to the soldiers' one to win the game.

Jim Oglesby, Plant Protection, managed a nd played first base for the Electrics during the past season. His experience has been valuable.

Team	Won	Lost
B-17 Trainers	4	0
Air Express	4	0
Pea Shooters	4	0
Tornadoes	3	1
Cellar Dwellers	2	2
Invaders	2	2
Night Owls	2	2
Bullies	1	3
Fulight Line	1	3
Controllores	0	4
Paratroops	0	4
Doobers	0	4
High 10, M. S. Kart, Pea Shooters, 244.		
High 30, H. C. Smith, Night Owls, 696.		



Douglas Photo by Ina Sears

**SOFTBALL TITLEHOLDERS**—Army Flight won the Dauntless league championship by taking two straight from the Mod. Havocs in the playoff finals. Team members, left to right, front row, Calvin Copeland, Vernon Rogosch, Anthony Nascenti, Thomas Castano, Otis Lemmon and manager Bill Johnson; second row, Paul Riley, Raymond Shannon, Clarence Walters, Carl Bartholomew and James Bradley, all of Army Air Forces.

# Organize Now!

Do you want to bowl in the Douglas mixed league? If you do, organize your team and call Toby Young, Recreation Manager, 4156, immediately. There is alley space available for only four teams.

Team	Won	Lost
Plant Service	2	1
Power Plant	2	1
Material	2	1
Plant Engineers	2	1
Controllores	1	2
Invaders	1	2
Horns and Procedure	1	2
Elect. Maintenance	1	2
High 10, C. W. Snapp, Plant Service, High 30, Ben Rice, Power Plant, 519.		

# These Ideas May Interest You

Here are two suggestions which may help office workers.

If your pencil gets to the stub stage, but is still too long to be discarded, try removing the eraser from the plastic holder of one stub; removing the complete plastic holder from another and combining the two short pencils by inserting the second pencil in place of the eraser.

This added length will enable you to use otherwise useless stubs to their very tips and will save pencils.

Ditto masters are often torn after they are completed because the signatures must be written heavily with hardlead pencil so that they will be clear when the ditto is run.

Margaret Smith, Central Order Control, has eliminated the chance of tearing these by sticking a piece of one-inch Scotch Tape over the assigned space for the signature.

# Slip Stream

**P**vt. Leona Solomon of the WACS was at the plant last week seeing all her old buddies with whom she worked in Power Plant Installation... Leona joined the women's army a year ago, had her training at Fort Oglethorpe, Ga., and is at present stationed at Marianna, Florida with the Air Forces... she has applied for overseas duty.

**DORRIS SULLIVAN**, Armament, Mod Center, received a birthday present recently from her husband, Johnny, who's on Guadalcanal... all wrapped up in a Prince Albert tobacco can were a necklace and bracelet of highly polished shells, which he had made for Dorris...

When **DOVIE MARTIN**, **VIRGINIA ALLEN** and **BONNIE FOSTER** transferred from second shift to first in Precision Inspection, their friends got together and gave them a farewell dinner, which must have been sumpin', judging from all reports.

The night of June 5, Sgt. J. H. Baker, paratrooper, husband of **KATHERINE BAKER**, Dispen-

sary, was

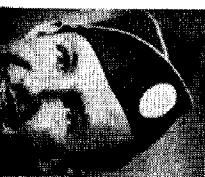
standing by a plane at an English air-drome ready to start for France. General Eisenhower



**WE'LL MISS YOU, JENNY** — At lunch period Tuesday, Jenny Allen, Plant Office Correspondence Control, was surprised to find the doorway blocked and herself surrounded by fellow employees. It was her last day... she was leaving to become a foreign missionary... and they were gathered to present to

her a framed plaque carrying all their signatures and a good luck poem to her... along with an airline ticket to her destination. Above, W. W. McCarty, Plant Office Manager, presents the plaque and ticket to her as her friends gather around to say goodbye and wish her success in her new venture

Douglas Photo by Ray Crowley



The night of June 5, Sgt. J. H. Baker, paratrooper, husband of KATHERINE BAKER, Dispen-



## BAKER

er, visiting the field, came to the plane and talked to each man, and Baker told him of his former civilian job, as an aircraft worker in Wichita. In his letter home Baker added "When I made my jump, the ammunition down below me was firing in all colors of the rainbow. As I was getting out of my chute I could see the Germans firing on the other paratroopers that were coming down. We fought at several different places on the Cherbourg peninsula. It was no fun, and I wouldn't care for any more of it. I'd rather be back building airplanes."

\* \* \*

Postcard in our box this week from JEANNE ENGLER, Personnel . . . who paused in Gallup, N. M., on her way to the west coast . . . she's on a leave . . .

"My department never makes the News"

Some folks will loudly hint.

Get on the ball, send in some notes,

And you'll see them in print.

Thanks this week to . . .

Virginia Jackson, D316; Elaine Donart, D4-360; Bobbie Sanders, D143; Thelma Brady, D406; Thelma Martin, D343; Mary Rushing, Armory; Martha Coffee, D325; Ina Sears, D274; Charles Mock, D182; Catherine Jackson, D136; Gladys Perrin, D408; Mern Wilson, D301.

**WE'LL MISS YOU, JENNY** — At lunch period Tuesday, Jenny Allen, Plant Office Correspondence Control, was surprised to find the doorway blocked and herself surrounded by fellow employees. It was her last day . . . she was leaving to study to become a foreign missionary . . . and they were gathered to present to

**I** know where I would like to go", says JENNY ALLEN, Correspondence Control, who left this week for five years at the Moody Bible Institute to study to be a missionary. "I'd like to be sent to Africa." Her plans for the future left some of her fellow employees gasping, but no less admiring.

Jenny, during her almost two years here, has handled a responsible job. She has been in charge of all correspondence between Douglas and the army . . . decided where it should be directed, how handled, and kept complete files on all of it.

A great favorite, at lunch period her last day here a large group gathered for a farewell party . . . not only members from her own department but from all over the plant.

When they were grouped around her, W. W. McCARTY, Plant Office Manager, and MERN WILSON, Plant Office, presented to her a gift from

the group, a plaque carrying the signatures of her fellow employees with a good luck verse . . . and a ticket to Chicago by plane . . .

\* \* \*

Good news for friends of FAY COLEMAN, Surfaces A-26 . . . he's recovering from a recent automobile accident, and went home from the hospital Monday, chipper as can be . . . getting along just fine, he's even threatening to come back to work any day now.

\* \* \*

Two big dates for L. H. DAVIS, Stationery Stockroom, were August 25 and 26 . . . the first day his son, Howard C. Davis, was commissioned an ensign at Annapolis. He will leave soon for duty in the Pacific . . . the second day Davis, senior, became the proud papa of Beverly Ann Davis, who put in her appearance at Weleetka.

\* \* \*

Our snappiest salute to CLAUDE V. CARLTON, Sheet Metal, second shift, who has never been absent or late since coming to work at the plant November 18, 1942 . . . plus that, he's never taken a vacation . . .

her a framed plaque carrying all their signatures and a good luck poem to her . . . along with an airline ticket to her destination. Above, W. W. McCarty, Plant Office Manager, presents the plaque and ticket to her as her friends gather around to say goodbye and wish her success in her new venture.

How he does it, we'll never know. BILL LEKA, Tool and Die Fabrication, can ride a one-wheeled cycle as well as most people can pedal a standard bicycle. He made the cycle himself, took a couple of hours to learn to ride it, and spent the next week trying to persuade his wife to balance on his shoulders and join the act.

That was no go . . . but the neighborhood youngsters love it! And Bill claims he can ride along with as many as three other passengers . . . one on his shoulders and one under each arm . . .

OLA PETTAY, joining A-26, is beaming these days, for her son, Kenneth Pettay, USNR, who has been at Pearl Harbor for two years working with the radio-radar division of the Navy, arrived home this week. He volunteered for service at Pearl Harbor as soon as he heard of the December 7 bombing, and arrived there on the first ship afterwards. He returns to Hawaii in a week. Ola, who has been here a year, has another son in Italy, Sgt. Wayne Pettay with the Army Air Forces.

\* \* \*

W. B. MAGRUDER, Precision Inspection, has returned from his vacation, which he spent climbing Colorado's mountains.



**LOOK—NO HANDS!**—Bill Leka, Tool and Die Fabrication, can even do tricks on this queer looking contraption . . . it's a one-wheeled cycle.

Douglas Photo by Ray Crowley