



A guide to neighbourhoods and your neighbours within the City of Greater Sudbury

Making tracks to Capreol

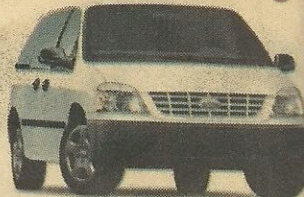
From 1918 to 2000, Capreol was an independent town. It was a major railway depot on the Canadian National Railway line and was named for Frederick Chase Capreol, the original promoter of the Northern Railway of Canada.

Although the town was originally an independent community with its own thriving economy, it gradually became a satellite community to the more rapidly growing city of Sudbury, approximately 40 kilometres to the south.



Bar steward Penny Young (in red) and patron Jean Buck set up cribbage games at Royal Canadian Legion Branch 179. Legion president Brian Way (left) stands in front of the building at 16 Young St. On Oct. 22, Branch 179 celebrates its 75th anniversary and the Year of the Veteran at a Gala event at the Capreol Community Centre. For more information, call the legion 858-1522.

2006 FREESTAR
\$19,999*
Plus 0.9% Financing



*Freight, taxes, admin. fees & license not included.
IT'S NOT JUST A FORD...IT'S

Cambrian
1615 Kingsway 560-3673

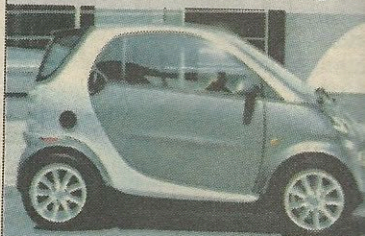
October 17 - 20

Panini Buns
\$2.89 /doz

Brandt
Roast Beef & Pastrami
1.09 /100g

Buns Master
1955 Lasalle 560-0985

Smart fortwo coupé.



The Smart fortwo coupé: lots of space, comfort, and safety. And, at just 2.5 m long, parking it is just as much fun as driving it.

Test drive yours today ...

Sudbury Fine Cars

2097 Long Lake Rd. • 522-7777

or visit our website:

www.sudburyfinecars.com

The Gallery Shop



Featuring work from artists near and far... pottery, glass, painting, jewelry & photography. Plus exhibition catalogues, posters & gallery merchandise.

art gallery of sudbury
galerie d'art de sudbury

251 John St.
Sudbury, ON P3E 1P9
(705) 675-4871
www.artsudbury.org