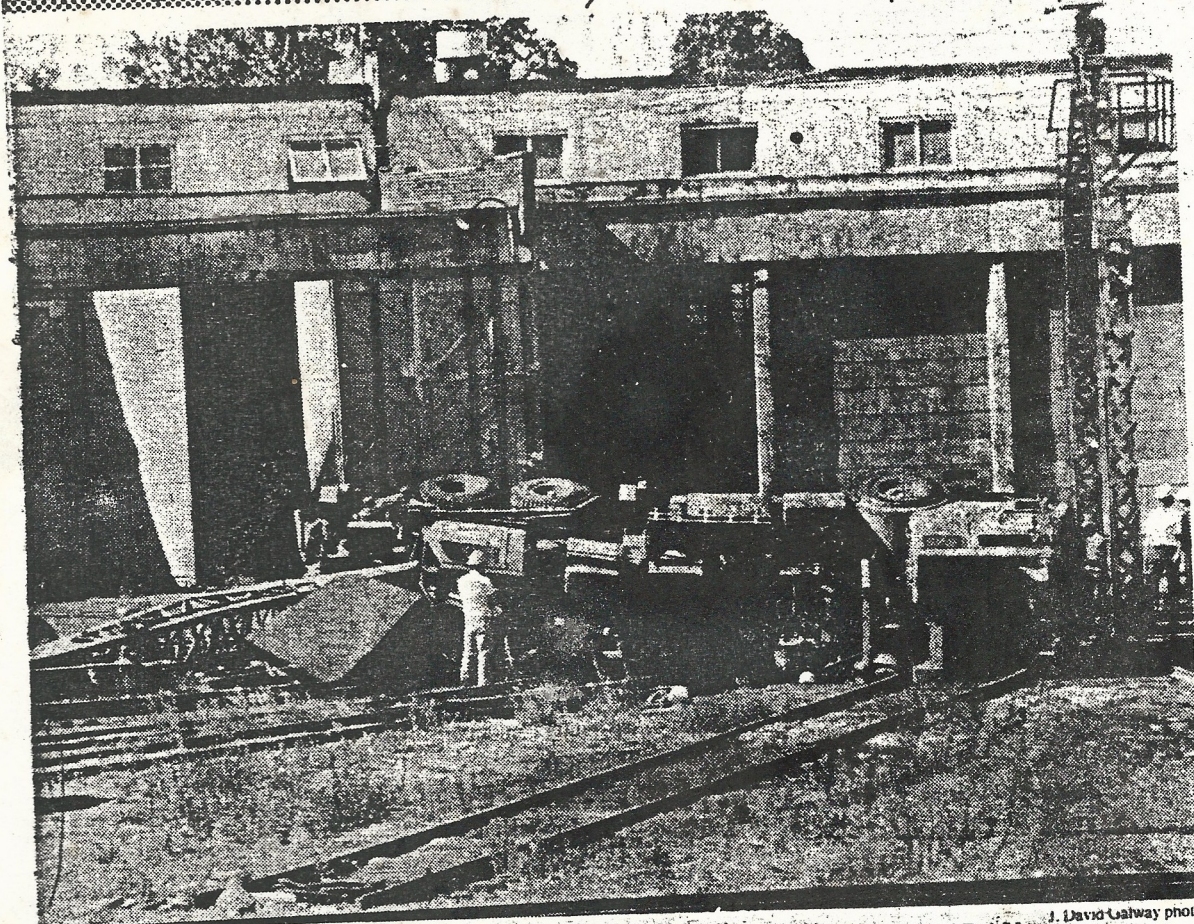


JUNE 16/88
THUNDER BAY ONE



J. David Leahy photo

ACCIDENT SCENE AT CN RAIL NEEBING YARD THURSDAY

Two pinned under toppled crane

Two CN Rail employees were taken to hospital after being pinned under a crane that toppled over at the railway's Neebing yard at about noon, Thursday.

The employees have been identified only as Bob McLean, a machinist, and Doug Williams, a laborer.

Leo Quigley, manager of CN Rail public affairs in Winnipeg said he understood the employees were conscious when taken to hospital. One may have suffered a broken leg.

"It was an extremely unfortunate

incident. I think we have two lucky employees," he added.

The employees were believed to both be on a large rail-mounted crane that was lifting wheel sets and traction motors from a gondola car when the crane toppled over, Quigley said.

Quigley did not know how long the two were pinned under the heavy machine. Officials at the rail yard referred all media inquiries to Quigley.

The spokesman said another crane mounted on a CP Rail harbor board train was brought to the site, and it lifted the wreckage enough to free the men.

The machine was then lowered to the ground again because Labor Canada ordered the accident scene be left in its original condition until its officers complete an investigation of the accident.

The federal labor ministry officers were unavailable for comment.