

April 21, 1929

THE MORNING REPUBLICAN

C. OF C. CHIEFS
A.T.B.I.D. PLANT

Directors of Civic Organization
Inspect Ditcher Company Plant

SEE MUCH OF INTEREST

Great Electric Furnace Melts
Much Steel During Day

"Come back and spend a whole day here, then we can show you the plant properly," was the parting observation of C. F. Yochum, production manager of the Buckeye Traction Ditcher Company to the members of the Board of Directors of the Chamber of Commerce, headed by President John E. Fridley, who had just spent an hour and a half looking over the huge institution yesterday afternoon. It was to this plant to be visited by the board under its policy of inspecting all the factories in the city.

The plant, which is one of the principal industrial mainstays of this community makes and sells all over the world, digging machines of all kinds from the largest to the smallest, back filling machines, drag line machinery, concrete breakers, pipe screwing machines and many other items.

Modern Plant.

It employs over 400 men the year around. The plant itself is a thoroughly modern group of brick buildings and great piles are taken to keep the surroundings neat. Well trimmed hedges, rose bushes and flower beds surround the plant and show evidence of constant care. Several acres of ground adjacent to the plant have been acquired by the company and made into a recreation park for their employees.

Within the buildings themselves the directors carried away impressions of batteries of ponderous machines, shearing metal, cutting metal, drilling metal and cutting keels of a great force room of a foundry, in which is cast grey iron at one end and steel at the other; of thousands of square feet of storage of metal shapes, the raw material for all these operations; of an assembly room as big as a cathedral in which great machines are taking shape, and of a plant in which gasoline motors are made. And an engineering department, with eight or ten draughtsmen stooping over their boards, and the business office divided into many departments at the head of which is C. D. Hayward, the secretary and treasurer and also a general manager, who received the directors and gave orders that they be given the freedom of the entire establishment.

Furnace Works Interest.
A great electric furnace, which melts regularly its fill of three tons of steel five times every day was one of the most spectacular items noted about the plant. Three thick cylinders of granitic sand the electricity to the furnace in-

Halt Filibustering
Seniors' Plea

The senior class of Findlay high school yesterday sent a letter to Senator D. Fess, United States Senator from Ohio soliciting his cooperation in an attempt to stop the practice of filibustering in congress. Every member of the senior class has signed the letter. The idea was suggested to the local high school by the high school seniors at Ann Arbor, Mich. The Ann Arbor class started the idea and has sent letters to representative high schools in each district all over the United States asking that a letter be sent to the Senator of that district denouncing the practice of filibustering. The letter which will be sent to Senator Fess follows:
The Honorable Simeon D. Fess, Washington, D. C.

Dear Sir:
We, the undersigned constitute the graduating class of 1929 of the Findlay high school at Findlay, Ohio.

In the study of our national government we have been impressed by the important role played by the United States Senate in framing the policies of the United States and in building up our government, of which we are justly proud. The work of our senators has been good and their influence very great. We realize how necessary the Senate is in keeping that balance so important in harmonizing our large and our small states the world's greatest experiment in democracy.

However, in the study of ours we have been surprised to learn many of us for the first time, that it is possible for a Senate to keep important questions from coming to a vote by the scheme known as 'filibustering' and thus often to defeat or at least to halt seriously a true expression of the will of the people as entrusted to their chosen representatives in the most powerful legislative body in our government.

Therefore we, regardless of parties, wish to make known to you, as an honored senator from our state, our feeling in this matter.



LET
STEVEY BROS.
FURNISH THE RING

THE LADIES
that mean
Savings
DIAMOND
SPORT SALE

From Amsterdam
U. — To You —
DIAMOND SAVING
COMBINATION

month of diamonds,
eater diamond values
before. It means that
ect importation, the dia-
ve sell to you are ultra-
n, are perfectly cut; dia-
ds that we are proud to
all to you. From Am-
sterdam . . . to us . . .
to you is a great
money saving com-
bination.



IMPORT SPECIAL
Beautifully modernistic.
Solid 18 kt.
white gold.
Exquisite gem.

\$37.50

painfully constructed,
exquisitely engraved,
fully jeweled ladies'
Wrist Watch

BUY ON
CREDIT

This exquisitely en-
graved rectangular
shape ladies' Wrist
Watch is an unusual
value.

DIAMOND SAVING COMBINATION

One month of diamonds, greater diamond values before. It means that best importation, the diamonds we sell to you are ultra-tern, are perfectly cut; diamonds that we are proud to sell to you. From Amsterdam . . . to us . . . to you is a great money saving combination.

BUY ON CREDIT

Daintily constructed, exquisitely engraved, fully jeweled ladies' Wrist Watch.

This exquisitely engraved rectangular shape ladies' Wrist Watch is an unusual value.

Use Your Credit

handsome 17 jeweled Ham- your reach. Just use your

DAILY PAYMENTS

60-Hour Bunn SPECIAL

\$60

Guaranteed to run 60 hours at one winding. Will pass railroad inspection.

Use Your Credit

IMPORT SPECIAL

Beautifully modernistic. Solid 18 kt. white gold. Exquisite gem.

\$37.50

PERFECT "100"

Our diamond quality that guarantees perfection. See this beautiful creation.

\$100.00

chain of all kinds from the largest to the smallest, back lifting machines, drag line machinery, concrete breakers, pipe screwing machines and many other items.

Modern Plant.

It employs over 400 men the year around. The plant itself is a thoroughly modern group of brick buildings and great palms are taken to keep the surroundings neat. Well trimmed hedges, rose bushes and flower beds surround the plant and show evidence of constant care. Several acres of ground adjacent to the plant have been acquired by the company and made into a recreation park for their employees.

Within the buildings themselves the directors carried away impressions of batteries of ponderous machines, shearing metal and cutting metal, drilling metal and cutting metal, of a great forge room of a foundry, in which is cast grey iron at one end and steel at the other; of thousands of square feet of storage of metal shapes, the raw material for all these operations; of an assembly room as big as a cathedral in which great machines are taking shape, and of a plant in which gasoline motors are made. And an engineering department, with eight or ten draughtsmen stooping over their boards, and the business office divided into many departments at the head of which is C. D. Hayward, the secretary and treasurer and also a general manager, who received the directors and gave orders that they be given the freedom of the entire establishment.

Furnace Holds Interest

A great electric furnace, which melts regularly its fill of three ton of steel five times every day was one of the most spectacular items noted about the plant. Three thick cylinders of graphite conduct the electricity to the furnace interior. An extra boiler and turbine are pressed into service at the T. B. G. & S. power house when the current is turned into this dainty creature every morning. Nearby is the coke fired furnace which delivers about 75 tons of molten grey iron every other day to be made into dishing machinery.

Rows and tiers of wooden patterns, filling to the ceiling a room over 100 feet long, could not be duplicated for a quarter of a million dollars, the directors were told by H. B. Van Scott, one of the officials who conducted the directors through the institution.

A huge circular saw of soft iron revolving at terrific speed amid a shower of sparks cut through a large section of structural steel, as easily as a knife cutting cheese as the party went by. The company builds its own gasoline motors up to about 30 horse power making and assembling all of its own parts in a large machine shop and buying outside only the carburetors and magnetos.

"I'd no idea that Findlay had such a wonderful plant as this," was the comment of several of the visitors. Two million dollars of Findlay capital are represented by this institution.

FISH HATCHERY BILL IS SIGNED

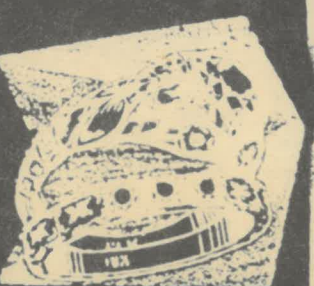
Governor Approves Measure Affecting Findlay—Erection May be Put Off

George M. Pomeroy's bill permitting the state to accept Findlay's gift of a fish hatchery site was signed yesterday by Governor

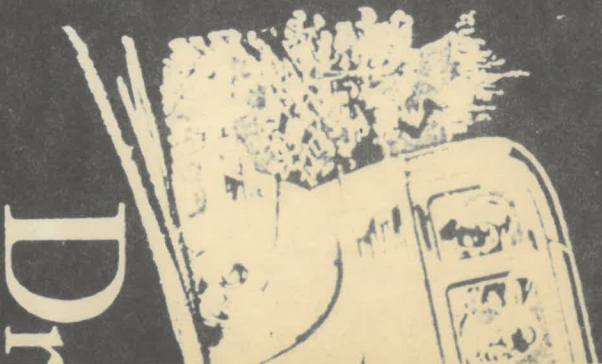
say the Senate is in keeping that balance so important in harmonizing our large and our small states the world's greatest experiment in democracy.

However, in the study of ours we have been surprised to learn many of us for the first time, that it is possible for a Senate to keep important questions from coming to a vote by the scheme known as "filibustering" and thus often to defeat or at least to halt seriously a true expression of the will of the people as entrusted to their chosen representatives in the most powerful legislative body in our government.

"Therefore we, regardless of parties, wish to make known to you, as an honored senator from our state, our feeling in this mat-



LET STEVER BROS. FURNISH THE RING



Chrysler enjoys its unique and popularity because it is unique among motor cars

There is no other motor formance quite like Chrysler formance—so silky in its flashing in pick-up, so speed, so uniting to drive captained in control.