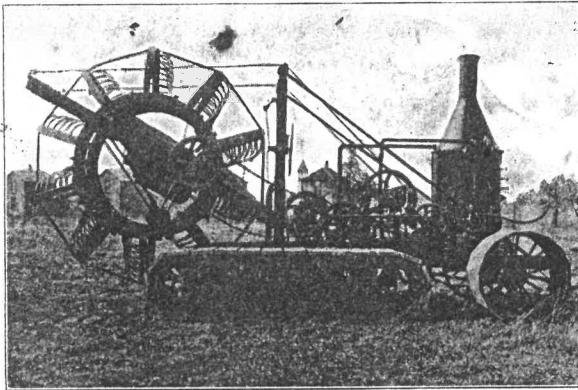


# The History of FINDLAY, OHIO

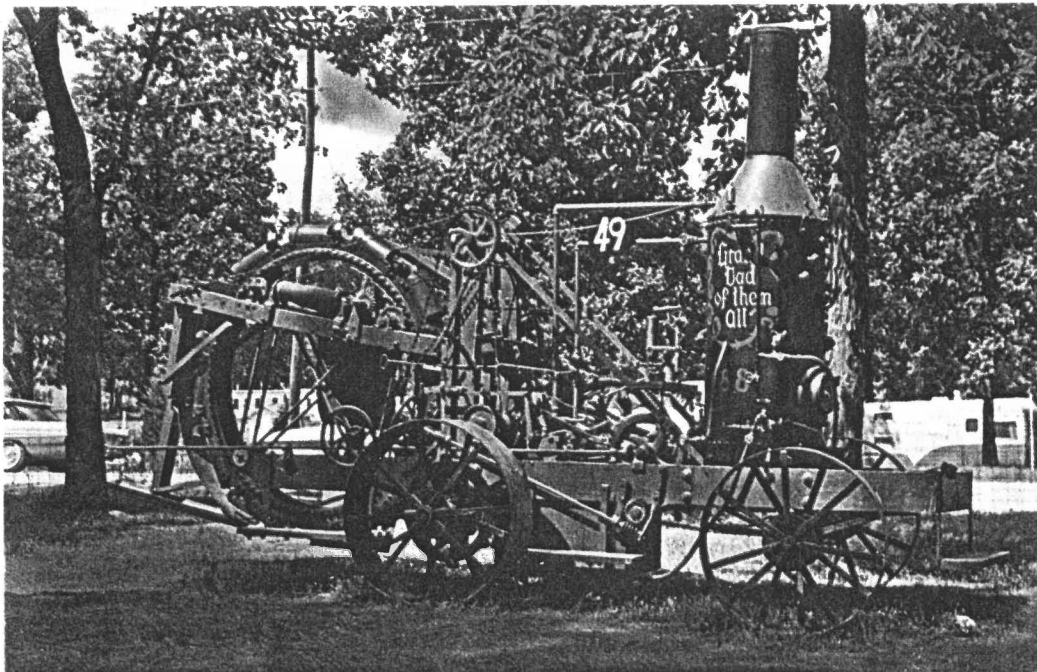


OPEN DITCHER FOR SWAMP LAND.

After Five Days Return to

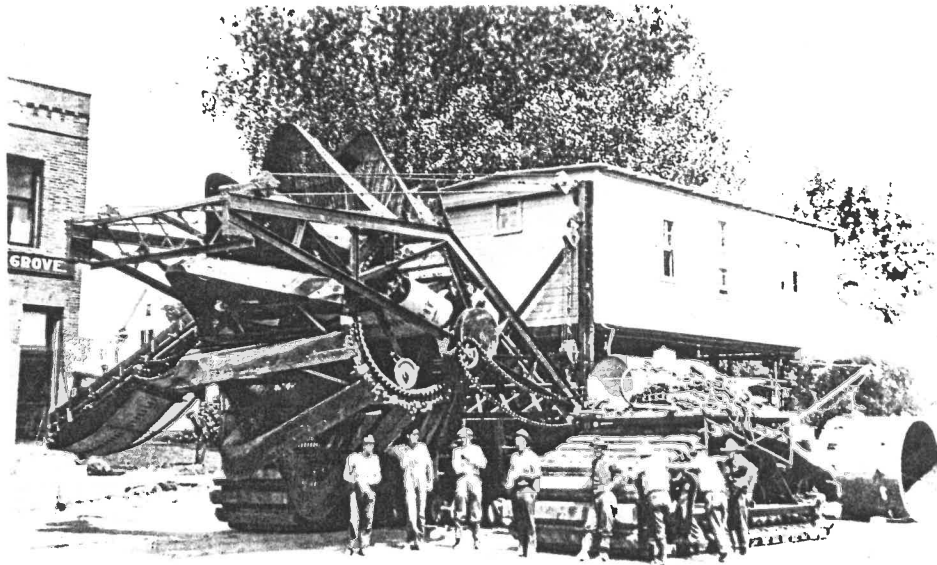
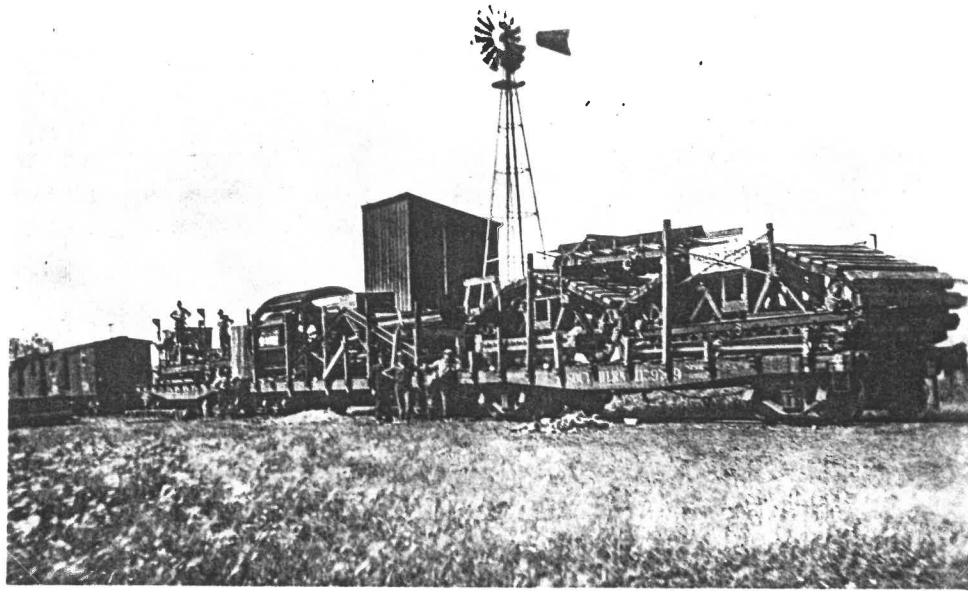
**J. B. HILL,**

415 Center Street, FINDLAY, OHIO.



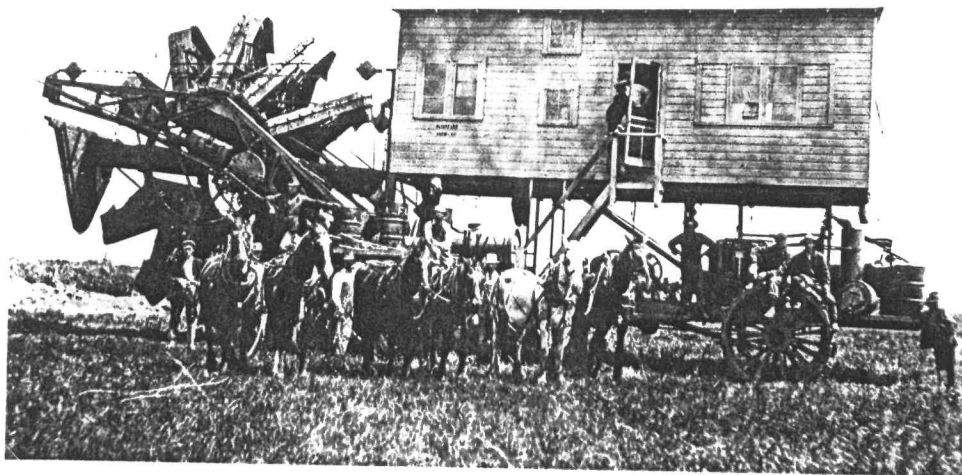
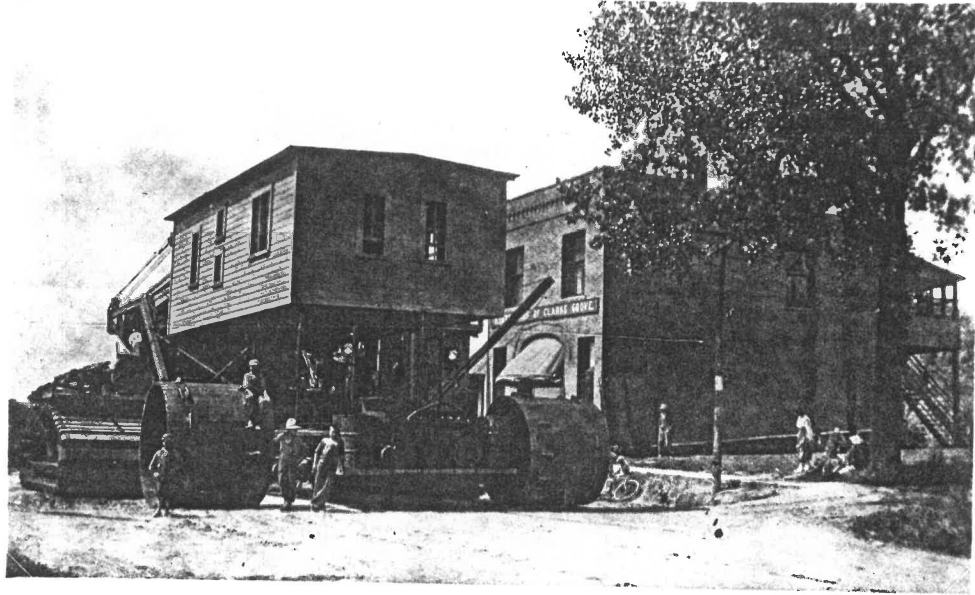
At the top of the page we have a cover from 1909 with a cachet picturing an "Open Ditcher for Swamp Land". Addressed to Lafayette, Louisiana, the cover carries the return address of the inventor of the ditcher, James B. Hill, with his address given as 415 Center street in Findlay. Below we have a recent color card of one of the few remaining ditchers. This machine is on display at the Hancock County Museum and the words "Grand Dad of them All" can be seen lettered on the fire tube boiler.

# The History of **FINDLAY, OHIO**



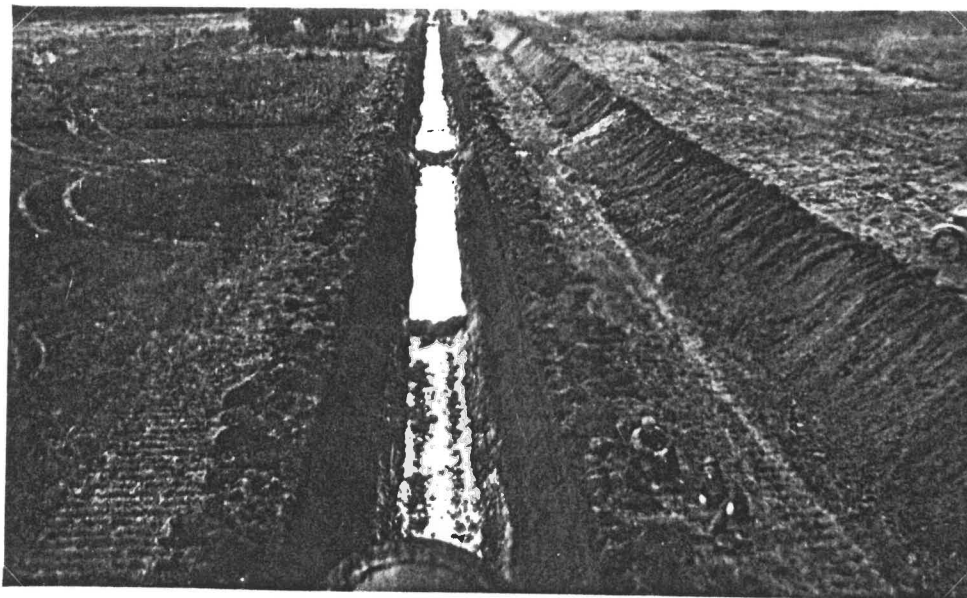
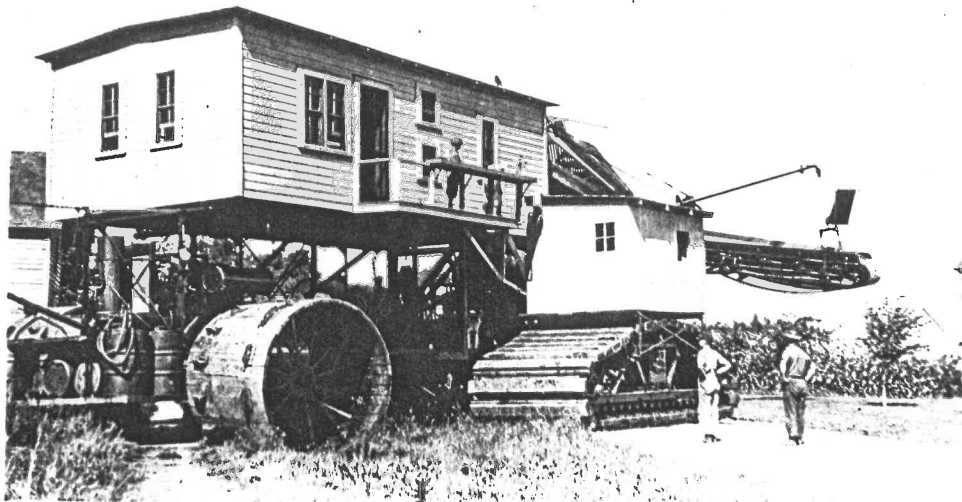
1919 The Buckeye Traction Ditcher did work in many places in the United States and world wide. Here the "big machine" as it was called, was taken by rail to Clarks Grove, Minnesota, to help drain a large marsh.

# The History of FINDLAY, OHIO



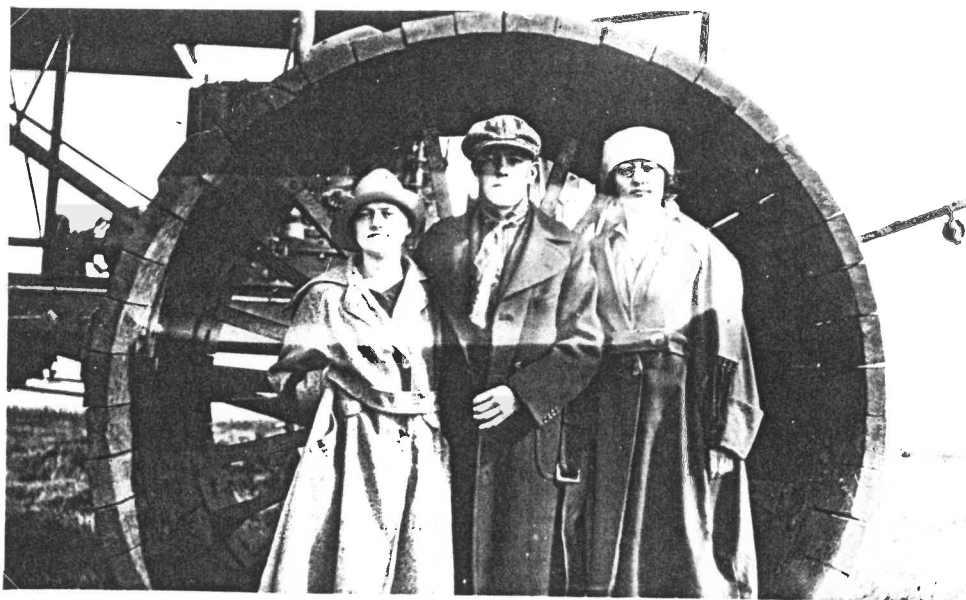
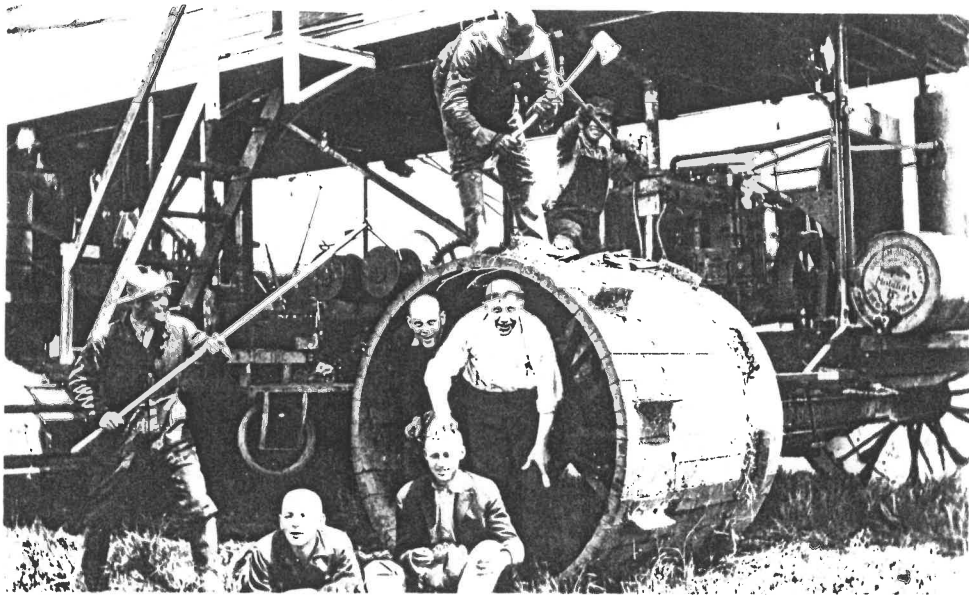
1919 The Buckeye Traction Ditcher's "big machine" at Clarks Grove, Minnesota. This great machine was capable of making a twelve foot wide ditch in a single pass through the swamp. Shown here are the side and rear views of the "big machine". Note the sign on the building on the right in the top photo "Station of Clarks Grove". This was a very small community about 65 miles south of Minneapolis.

# The History of FINDLAY, OHIO



1919 The Buckeye Traction Ditcher's "big machine" at Clark Grove, Minnesota. The machine was so large that it actually had a "house" on top. The upper photo shows the dirt conveyor that came out of the side of the machine. The lower photo shows the 12 foot wide ditch that the machine was capable of doing in one pass. Note the two workmen in the lower photo, dwarfed by the size of the ditch.

# The History of FINDLAY, OHIO



1919 The Buckeye Traction Ditcher's workmen clowning it up at Clarks Grove, Minnesota. The photo below pictures Mr. & Mrs. Clow on the left and Edith Robbins (Dangler) on the right. Both photos are posed within one of the large "swamp wheels" on the Ditcher.