

The American Society of Mechanical Engineers

Historic Engineering Landmarks

COVER & OTHER
SHEETS TO BE SIMILAR
TO THE "OVERS BOTTLE
MACHINE" OR FIRST
NUCLEAR POWERED MERCHANT
VESSEL. PRODUCTIONS

FILE COPY
DO NOT DESTROY

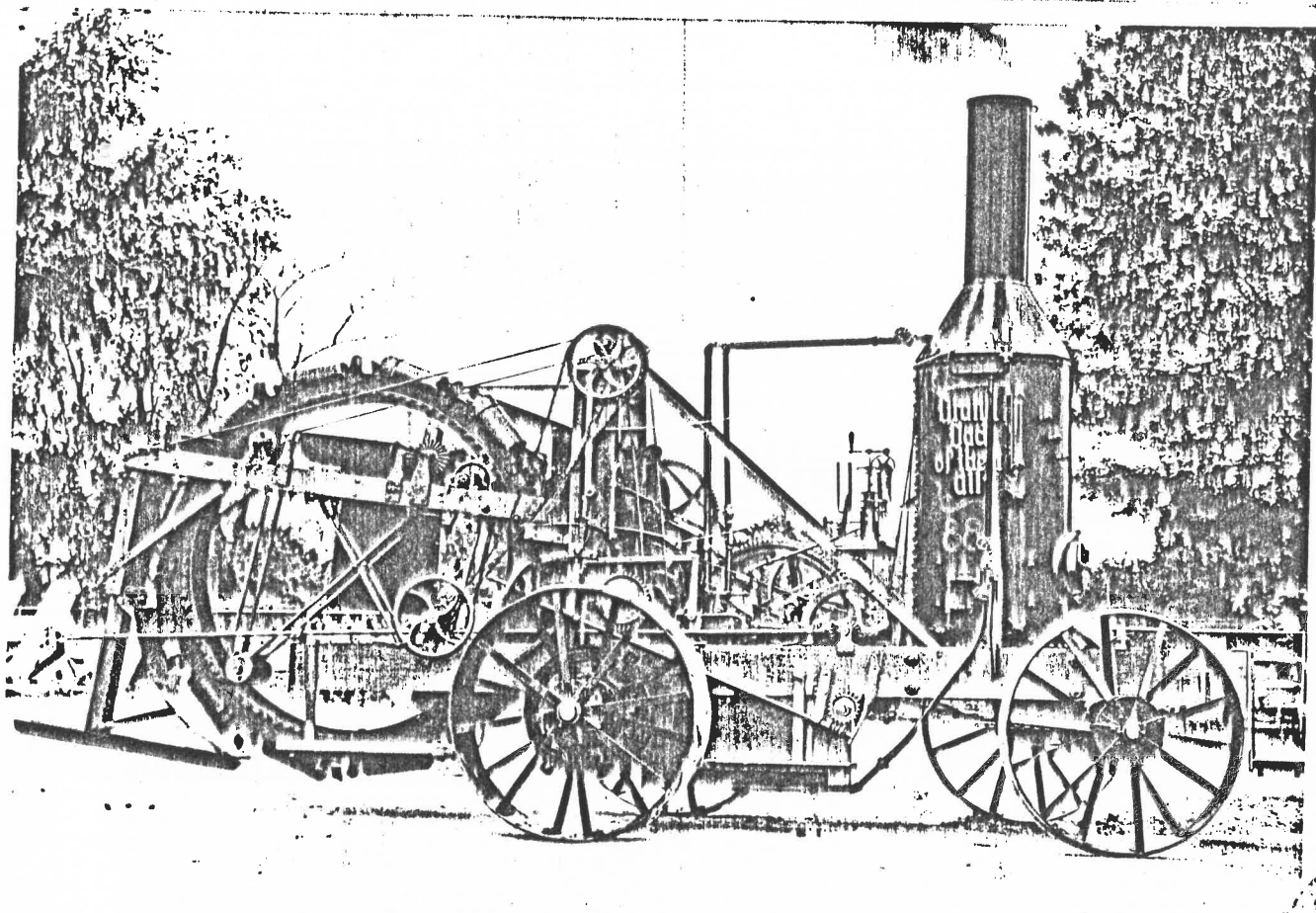
Findlay, Ohio

DRAFT 25 FEB 88 NWO



The American Society of
Mechanical Engineers

INTERNATIONAL HISTORIC
MECHANICAL ENGINEERING LANDMARK



BUCKEYE STEAM TRACTION DITCHER

Hancock Historical Museum Association
Findlay, Ohio
August 5, 1988

NWO
HAS NEGATIVE

DRAFT 25 FEB 88 NWO

James B. Hill was born November 29, 1856 in Fremont, Ohio. Mr. Hill's work on a farm made him realize the need of a practical way to place underground drain tile in the field and in 1893 while in Bowling Green, Ohio, made the first successful steam driven tractor ditcher. Patent No. 523,790 for the ditcher was issued July 31, 1894.

Mr. Hill, his wife and seven children moved for brief stays in Deshler and Carey, Ohio. Ditchers were made in both locations. In 1902 Mr. Hill and family moved to Findlay, Ohio. There the ditcher was made by Heck Van Buren and Marvin Company whose name was changed in 1906 to the "Buckeye Traction Ditcher Company".

The "Buckeye Traction Ditcher Company" continued to develop and build ditchers of many sizes that were shipped all over the United States of America and Canada as well as to many foreign countries.

Mr. Hill continued his development work on the traction drive system and in 1907 received Patent No. 866,647 for a "traction apron" that is known today as the "catapillar tread".

The Buckeye Traction Ditcher is currently manufactured by "Ohio Locomotive Crane Company, Bucyrus, Ohio".

In 1908 Mr. Hill moved to Raceland, Louisiana where as a farmer he developed seed corn known as "Hill's White Cob" and "Yellow Dent" which was sold in South America as well as many parts of the United States.

Mr. Hill continued development work for components of the modern tank and equipment used in draining swamp lands in Louisiana.

Mr. Hill died in Raceland, Louisiana September 25, 1945 and is buried in Maple Grove Cemetery, Findlay, Ohio.

OPERATION OF THE BUCKEYE STEAM DITCHER

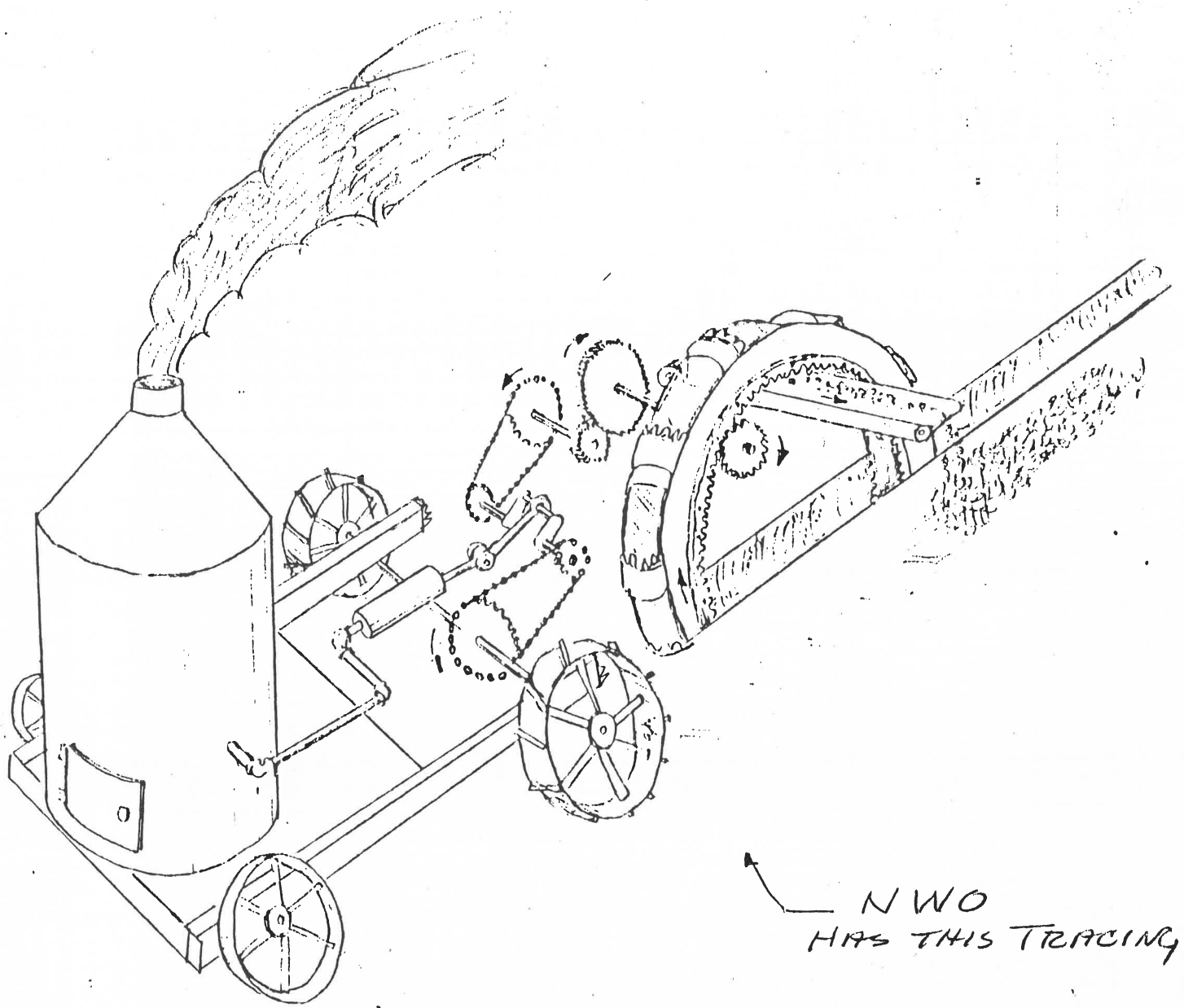
The Buckeye Steam Traction Ditcher was originally designed to dig ditches so as to lay agricultural drainage tile. However, it served equally well to open trenches for any pipeline to be placed underground or for developing open drainage ditches. It was reported in 1920 that the State of Ohio alone had approximately 25,000 miles of open drainage ditches.

In the construction of any ditch, it is required to know the ditch direction, the desired depth and the grade of the ditch. Once the Buckeye Steam Ditcher was properly "steamed" and aligned, the digging wheel was engaged to rotate, the ditching machine moves forward and the digging wheel was gradually lowered so as to dig its way down to the desired depth. At this point a following support shoe was set and locked in place behind the digging wheel and the cables supporting the back end of the wheel frame were slackened.

The dirt scooped by the digging buckets was carried toward the top of the digging wheel, dumped out of the bucket onto a cross belt conveyor and carried away from the digging wheel to be piled along one side of the trench.

The proper grade was maintained by sighting over previously set height targets and adjusting the height of the pivot support at the front of the digging wheel.

DRAFT 25 FEB 88 NWO



NWO
HAS THIS TRACING

Schematic

BUCKEYE STEAM TRACTION DITCHER

DRAFT 25 FEB 88 NWO

INTERNATIONAL LANDMARKS

Cooperative Fuel Research Engine, Waukesha, WI
Holt Caterpillar Track-Type Tractor, Stockton, CA
100-Inch Telescope, Mount Wilson, Pasadena, CA
Edison Experimental Recording Phonograph, West Orange, NJ
Le Creusot Steam Hammer, Creusot, France
Rotating-Arm Model--Test Facility, Hoboken, NJ
Steam Turbine Yacht Turbinia, Newcastle-upon-Tyne, England
The Newcomen Steam-Atmospheric Engine, Dartmouth, England
FMC Continuous Rotary Pressure Sterilizer, Santa Clara, CA
Corning Ribbon Machine, Corning, NY
FMC Whole Juice Extractor, Lakeland, FL
Shoreside Container Handling Crane, San Francisco, CA
Owens Automatic "AR" Bottle Machine, Toledo, OH
Nuclear Steamship "Savannah", Charleston, SC
Xerography, Columbus, Ohio
IBM 3500 Random Access Control (RAMAC), San Jose, CA
SS Great Briton, Bristol, England
Hot and Cold Isostatic Processing (HIP) Battelle Lab,
Columbus, OH

LANDMARK AWARDS
FOR '86 & '87 & '88
TO BE ADDED

DRAFT 25 FEB 88 NW O

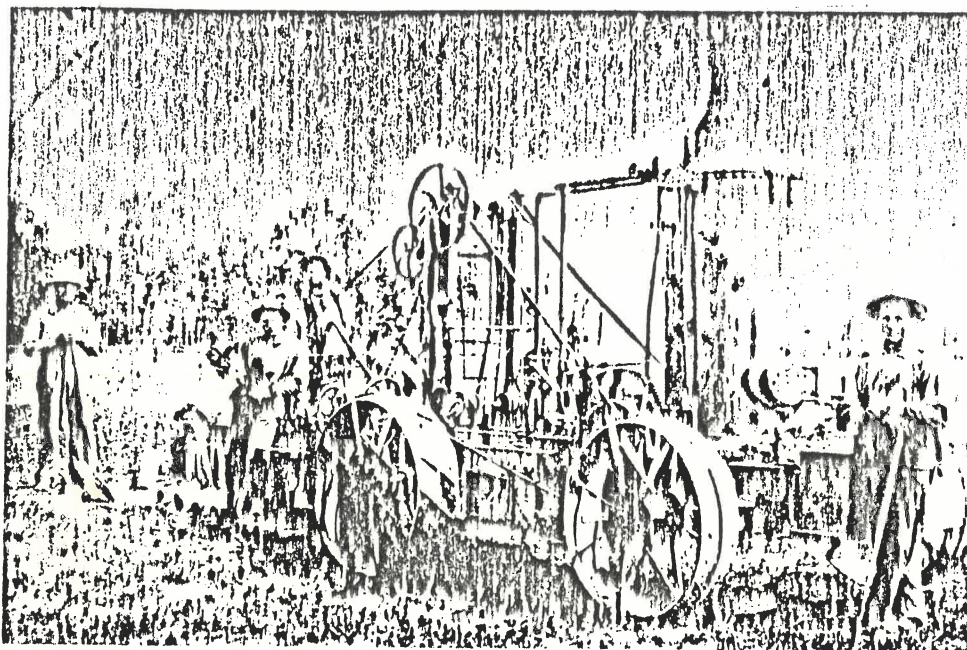
LEGEND

1. Airport
2. Blanchard Valley Hospital
3. Chamber of Commerce
4. Cooper Tire Company
5. Eastman Kodak Company
6. Fairground
7. Findlay College
8. Hancock Historical Museum
9. Holiday Inn
10. Marathon Oil Company
11. Werk-Brau
12. SAUSSER STEEL (FORMER GARWOOD PLANT)

HISTORY OF HANCOCK HISTORICAL
MUSEUM ASSOCIATION

WILL ASK CHRIS
HALEY TO GIVE
A "WRITE UP"

DRAFT 25 FEB 88 NWO



George and Harmon Sonnenberg with their Buckeye Steam Ditcher, 1905

Hugo Sonnenberg family
Hamler, Ohio

MAUMEE VALLEY HISTORICAL SOCIETY

ASME No _____

2009.400.511