



Judge Chester Pendleton

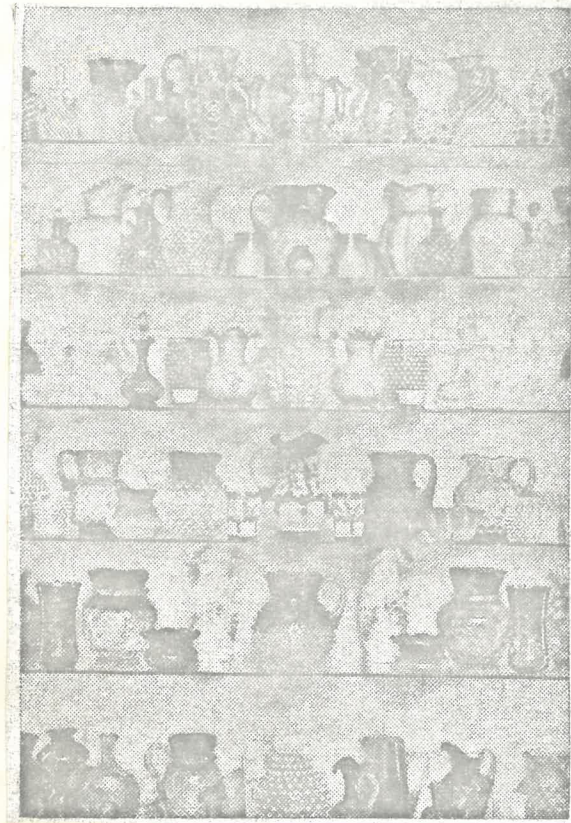
Pendleton
Glass Collection:

Left Case

OH

Masterpieces of Glass-Blown Art Displayed Among Early American Glassware in Pendleton Collection

Collection commenced in 1936



FLASHING, brilliant glass fired by migrant glass-blowers 80 years ago is displayed now in the collection of early American glass housed in the Glendale avenue home of Judge and Mrs. Chester Pendleton.

Started as a hobby 12 years ago by Mrs. Pendleton, the collection includes rare art glass of the Victorian period. Pieces of glass made in Findlay 50 years ago are also represented.

Since glass is sensitive to the elements and may change color when exposed to the sun, the major part of the collection has been placed in two ceiling-high, glass-fronted wall cabinets illuminated by fluorescent lighting. Carefully selected types of Wheeling Peach Blow, New England Peach Blow, satin glass, Pomona, amberina and agata glass are expertly exhibited.

Handblown glass is made by a process of mixing, melting and blowing a composition of sand, soda and lime or lead. Workmen who learned their trade at an early age skillfully shaped the molten glass with simple tools into a finished product of transparent beauty.

Color effects were produced from fusing with metallic oxides. Little is known about the theory of coloration, but almost all colors were produced. Decorations were applied in many ways through tooling, frosting, etching with hydrofluoric acid, or spangling the hot glass with gold or silver metallic leaf.

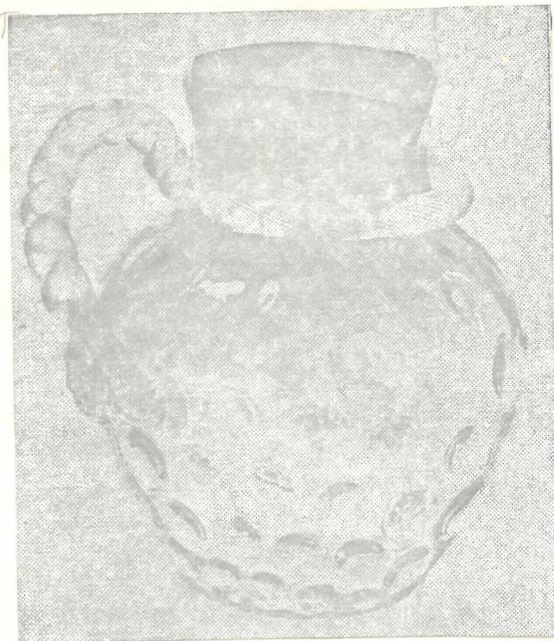
Old glass is distinguished by its lustre, sheen and patina. Some flaws or irregularities are almost always present and greatly enhance the value. Desirable glass always has a certain mellowness which comes from its age.

Like a fine painting, the decorative, delicate glass in the Pendleton collection must be seen to be believed. Cranberry, ruby, gold, amber, vaseline, satin pinks and blues, clear crystals, amberina, marbled glass and spangled glass radiate a spectacular show of beauty.

Thus it is that the pride of glass workers in their finest workmanship is given deep appreciation by a Findlay family who continue to cherish and display the masterworks of a past century.

*About 36 years to
build collection*

A part of the collection in one of the two built-in wall cabinets. Fluorescent lights, installed nine years ago, were the first used in Findlay.



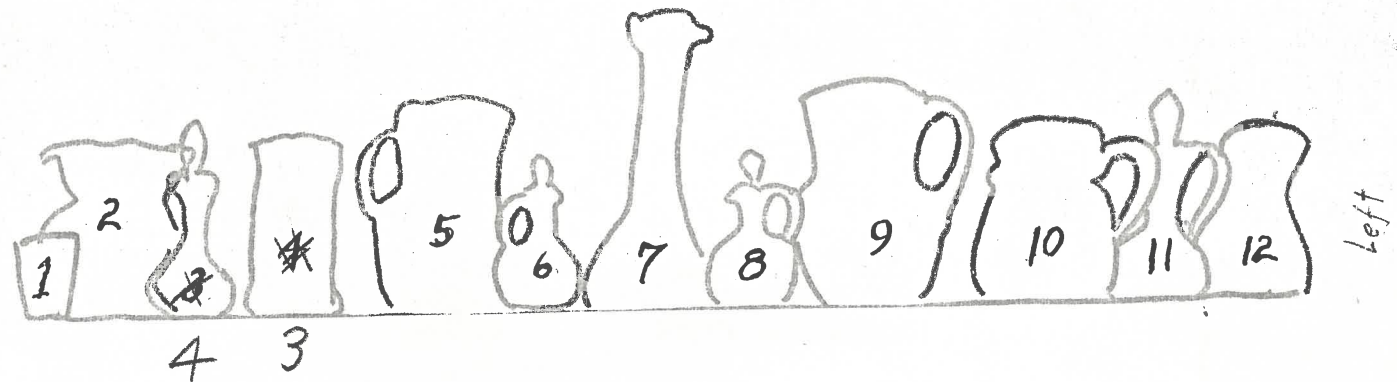
Rope-handle pitcher with thumb print overall design, cobalt blue top shading into clear crystal. The twisted rope handle was applied when the glass was hot, requiring great speed and skill.



Gold and silver coins were said to have been placed in the mix used for this glass made in Findlay around 1880. Part of the Findlay glass in the Pendleton collection was found in New England.

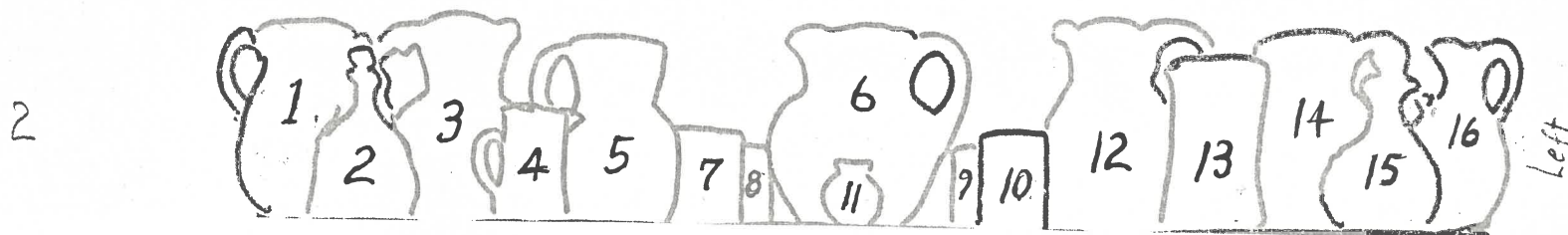


Ten-inch Victorian vases, the first pieces of blown glass to be collected by Mrs. Pendleton. The outside layer of white glass is superimposed on an inner layer of delicate pink. The mouth edge is fluted and applied glass decorations trim the exteriors.



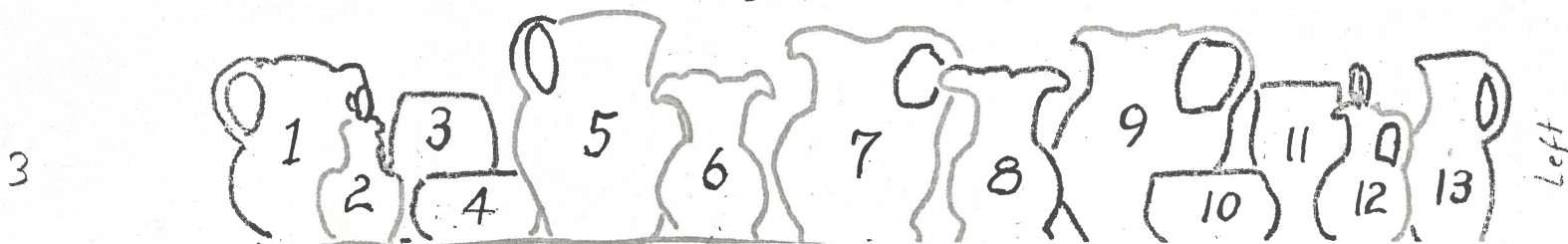
Top Shelf (12 pieces) Left to Right

1. Pitcher-- Craquelle glass, white with ruby fluted top, applied handle
2. Tumbler-- Craquelle glass, ruby and white
3. Vase-- Coralene, pink shading to cream at top *Burmese*
4. Cruet-- clear blue, herringbone design, clear stopper and applied handle
5. Pitcher-- cranberry cut overlay, large cut, fluted top, applied handle
6. Cruet-- blue cut overlay, small cut, blue stopper and applied handle
7. Vase-- Burmese, swirl design, creamy white shading to pink at top, fluted top
8. Cruet-- cranberry cut overlay, small cut, clear stopper and applied handle
9. Pitcher-- blue cut overlay, large cut, fluted top, blue applied handle
10. Pitcher-- amberina, expanded diamond, amber applied rope handle
11. Cruet-- vaseline, opalescent stripes, clear stopper and applied handle
12. Pitcher-- blue diamond quilted, square top, applied amber handle



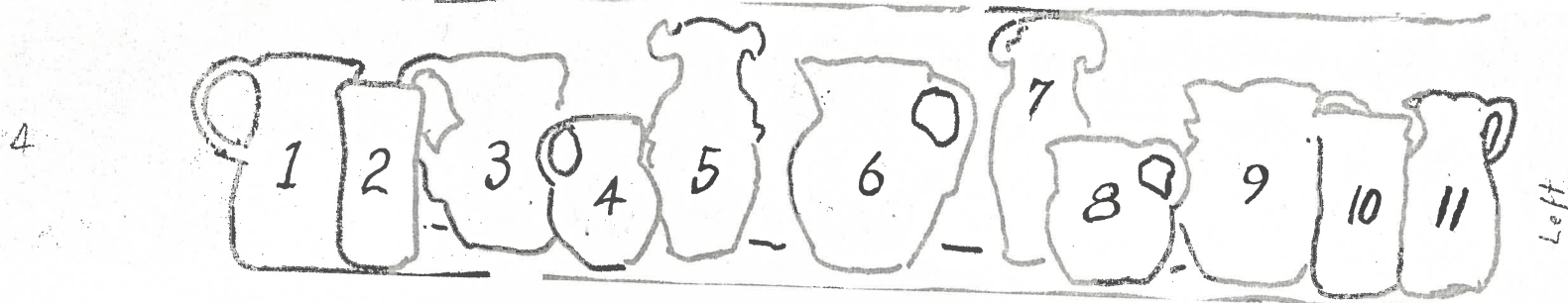
Second Shelf (16 pieces)

1. Pitcher-- hobnail, square top, frosted bottom, amber top, applied handle
2. Cruet-- hobnail, cranberry opalescent, clear stopper and applied handle
3. Pitcher-- shaded peach satin glass, diamond quilted, fluted top, white lining, applied frosted handle
4. Cream pitcher-- agata, applied handle
5. Pitcher-- blue shaded satin glass, square top, applied frosted handle
6. Pitcher-- Wheeling Peachblow, glossy, square top, applied amber handle
- 7-10. Tumblers-- match #6
11. Toothpick holder-- Wheeling Peachblow, glossy
12. Pitcher-- blue satin glass, herringbone design, melon shape, white lining, applied frosted handle
13. Celery vase-- agata, scalloped top
14. Pitcher-- shaded pink satin glass, diamond quilted, round top, square shape, white lining, clear applied handle
15. Cruet-- hobnail, cranberry opalescent, clear stopper, opalescent applied handle
16. Pitcher-- hobnail, clear, white lining, applied handle



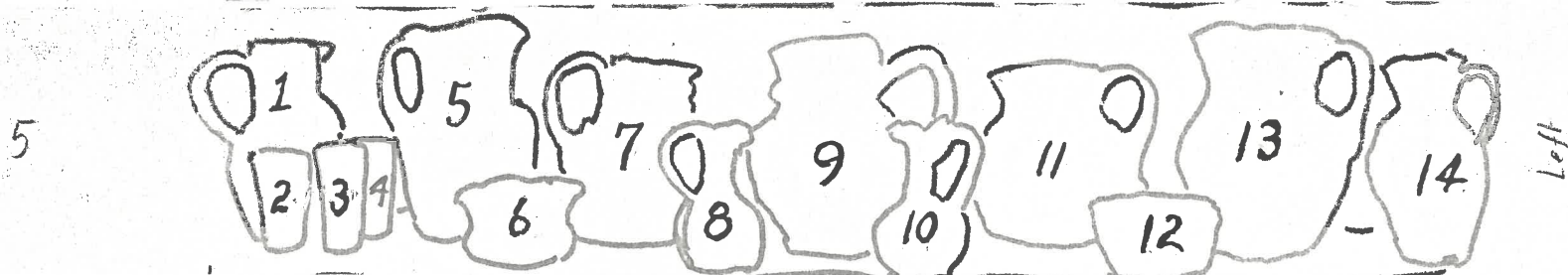
Third Shelf (13 pieces)

- 1. Pitcher-- hobnail, clear blue, square top, applied blue handle
- 2. Cruet-- cranberry cut overlay, large cut, white top, clear stopper and applied handle
- 3. Celery vase-- hobnail, cranberry opalescent
- 4. Finger bowl-- hobnail, vaseline opalescent
- 5. Pitcher-- pink satin glass, drape design, applied frosted handle
- 6. Vase-- blue satin glass, diamond quilted, ruffled top, frosted applied decorations and feet
- 7. Pitcher-- shaded yellow-green opalescent, clear applied rib handle
- 8. Vase-- pair with #6
- 9. Pitcher-- shaded pink, fluted top, melon shape, clear applied handle, gold enamel decorations
- 10. Finger bowl-- matches #4
- 11. Celery vase-- matches #3
- 12. Cruet-- pink swirl, cut overlay, clear stopper and applied handle
- 13. Pitcher-- hobnail, blue frosted, square top, applied handle



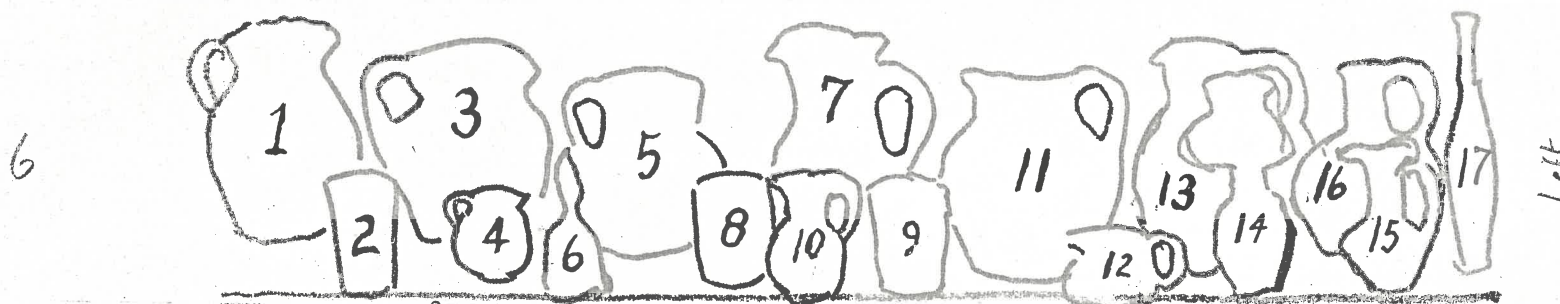
Fourth Shelf (11 pieces)

1. Pitcher-- hobnail, Rubina Verde, square top, applied vaseline handle
2. Celery vase-- amberina, inverted thumbprint, scalloped top
3. Pitcher-- cranberry inverted thumbprint, square top, clear applied rope handle
4. Cream pitcher-- amberina inverted thumbprint, applied handle
5. Vase-- pink with white overlay, ruffled top, clear pink and white applied acorn and leaf decoration
6. Pitcher-- blue coin spot, ruffled top, clear blue applied handle
7. Vase-- pair with #5
8. Cream pitcher-- reverse amberina, expanded diamond design, applied amber handle
9. Pitcher-- amberina (or Rubina Verde), inverted thumbprint, square top, applied clear rope handle
10. Celery vase-- matches #2
11. Pitcher-- hobnail, clear cranberry, square top



Fifth Shelf (14 pieces)

1. Pitcher-- three-layer cut overlay, clear-white-cranberry
- 2-4. Tumblers-- juice size, match #1
5. Pitcher-- blue cut overlay, small cut, ruffled top, clear blue applied handle
6. Finger bowl-- New England Peachblow (Wild Rose), glossy, scalloped fluted top
7. Pitcher-- hobnail, clear vaseline, opalescent hobs, round milk-white top, clear applied handle
8. Vase-- cruet-shaped, brown and gold flecked, white lining, fluted top, clear applied handle
9. Pitcher-- blue inverted thumbprint, square top, applied amber rope handle, enamel decorations
10. Vase-- pair with #8.
11. Pitcher-- hobnail, vaseline and ruby opalescent, square top, applied frosted vaseline handle, as is
12. Finger bowl-- agata, fluted top
13. Pitcher-- cranberry cut overlay, small cut, square top, clear applied handle
14. Pitcher-- peacock-blue, inverted thumbprint, fluted top, applied blue handle

Sixth Shelf (17 pieces)

- 1. Pitcher-- clear with cranberry top, opalescent top band and swirls, ruffled top, clear applied handle
- 2. Tumbler-- Burmese, creamy yellow shading to pink at top
- 3. Pitcher-- cranberry inverted thumbprint, square top, clear applied handle, enamel decorations
- 4. Cream pitcher-- clear, enamel decorations, applied handle
- 5. Pitcher-- hobnail, clear amber top, frosted bottom, square top, clear applied handle
- 6. Bell-- amberina
- 7. Pitcher-- ruby, white sanded leaf design, fluted top, gold banding, clear applied handle
- 8-9. Tumblers-- match #7
- 10. Cream pitcher-- cranberry inverted thumbprint, clear applied handle
- 11. Pitcher-- brown and white swirl overlay, white lining, clear applied handle
- 12. Cream pitcher-- blue inverted thumbprint, amber applied handle
- 13. Pitcher-- clear blue, herringbone design, applied blue handle, white enamel flowers
- 14. Lamp-- amberina, applied amber feet \$500.
- 15. Vase-- shaded frosted blue, cruet shape, ruffled frosted top, applied frosted handle
- 16. Pitcher-- amber, flask shape, diamond quilted, clear applied handle
- 17. Decanter-- clear, cranberry cut overlay, as is