

67-147

# WHIDBEY *The Island Beautiful*

The Whidbey Island Story—

## North, Central and South Whidbey

Oak Harbor is the business center of North Whidbey, with modern shopping facilities, excellent schools, theater, bowling, restaurants and motels. Located on a natural harbor, its waterfront forms part of a municipally owned Beach Park, where an Olympic-size tidal pool, children's wading pools and play equipment is installed. Another portion of the waterfront is also city-owned and is being developed into a public small-boat harbor and marina.

As might be expected on an Island, emphasis is on water sports, fishing, beaches, and boating. People respond to their Island environment with boats and fishing gear; the county and town of Oak Harbor furnishes adequate boat ramps and public beaches. At Oak Harbor City Beach this summer a travel-trailer court is also being established, with overnight parking for 28 trailers.

An annual "Old Fashioned Fourth of July" is held in downtown Oak Harbor and at the City Beach Park. Navy groups and civilians work together to produce a "home town" flavored event, beginning with a parade and ending with traditional fireworks on the waterfront.

Another annual event is the August 13 Boat-e-o and Navy-Neighbor

(Continued on Page 10)

Central Whidbey, location of Coupeville, Island County's seat of government, was one of the earliest settled areas in the northeastern part of the State. Situated on a gentle slope of land on Penn Cove where Master Joseph Whidbey anchored his small boat while taking soundings and exploring the shores, the town was named after Captain Thomas Coupe, one of the scores of deep-sea Captains who settled the area.

Coupeville became the lone surviving settlement of three; the seat of government was originally located at the head of Penn Cove and called Couveland (near San de Fuca) Ebey's Landing was also the site of Whidbey's first permanent settler, Col. Isaac N. Ebey, whose death at the hands of northern B.C. Indians was an early day tragedy. The Landing was used for several years by passing boats with cargo and passengers. But with the establishment of Coupeville, settlers gradually gravitated to this growing pioneer town.

The most prominent attraction of Coupeville is its historic monuments, four Indian blockhouses of the 1850 era located in and near the town. Front Street has well-preserved architecture of early days when water travel was its only connection with the main-

(Continued on page 10)

If you occasionally yearn for the bright lights, but would rather see mountains in the morning and if you feel like moving when you can see your neighbor's chimney smoke, but like being near a modern supermarket—South Whidbey may be for you.

Over 70 per cent of South Whidbey is vacant, except for trees and the remaining is almost all farm land. There are, however, stores, churches, underground telephone wires, a modern grade and high school, a weekly newspaper, two libraries and one incorporated town. There are people, but you don't see most of them—they are hiding down lanes by the beach or back up a hill in the woods. But then some 3,000 part and full-time residents simply don't fill up 40,000 acres.

But if the population of South Whidbey isn't exactly booming—Langley only incorporated town, has yet to reach 500—no one is crying about it. The advantage as far as they are concerned is the fact they are close to Everett and Seattle, yet cut off from them. Since a large portion of the "newcomers" have come here to escape from smog, noise and a fast pace of life, the 15 minute ride from Mukilteo is more of a blessing than an inconvenience. But if anyone gets

(Continued on Page 8)

## COMING EVENTS ON WHIDBEY ISLAND

- JULY 4th CELEBRATION  
HAVE AN OLD FASHIONED FOURTH  
CITY BEACH — OAK HARBOR

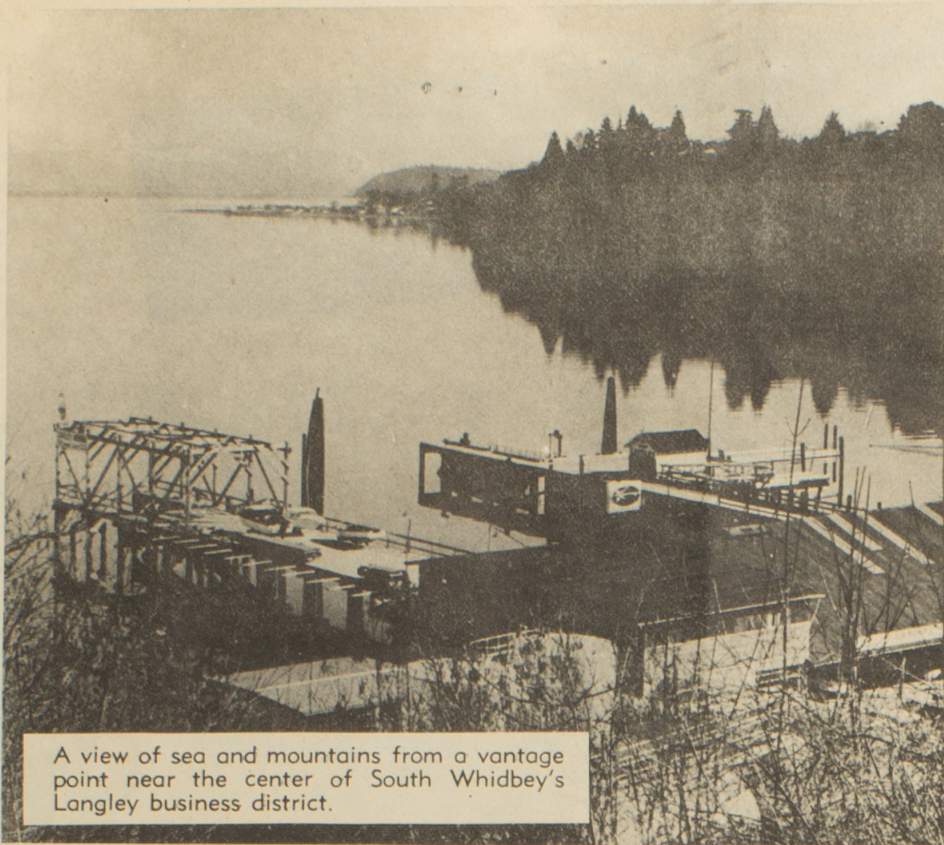
- COUPEVILLE FESTIVAL  
August 20 & 21, 1964  
ART FESTIVAL — SALMON BARBECUE  
FISHING DERBY — FRONT STREET  
COUPEVILLE & KEYSTONE

- OAK HARBOR BOAT-E-O  
August 13th  
SALMON BARBECUE — CITY BEACH

- ISLAND COUNTY FAIR  
August 26, 27, 28  
FAIR GROUNDS — LANGLEY

**VISIT WHIDBEY**  
**'Just For The Fun Of It'**





A view of sea and mountains from a vantage point near the center of South Whidbey's Langley business district.



Deception Pass and its breathtaking spans attract thousands of tourists annually to marvel at the view which is one of the Northwest's most spectacular.

## ROBINSON'S RESORT for Fishin' or Fun!

BOAT LAUNCHING - BAIT - BOAT RENTALS  
TRAILER SPACES RIGHT ON THE BEACH

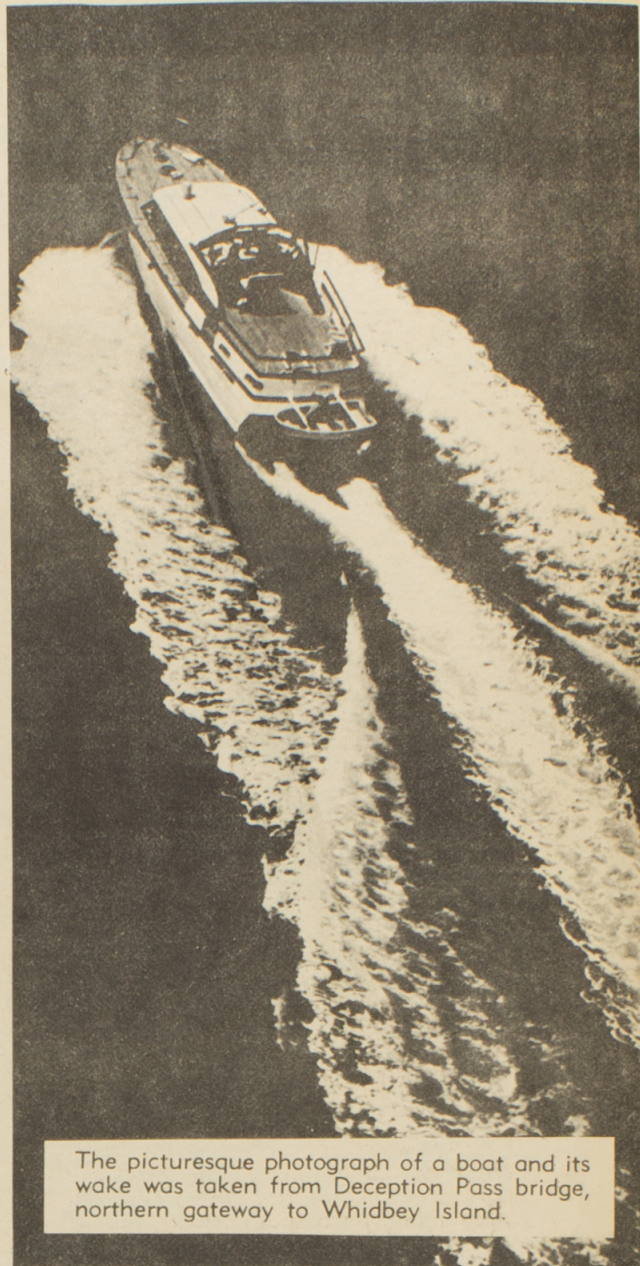
# CAFE

— VIEW DINING —

--- TACKLE ---

SANDY BEACH  
ON BEAUTIFUL  
MUTINY BAY

FREELAND, WASHINGTON  
EV-2-6622



The picturesque photograph of a boat and its wake was taken from Deception Pass bridge, northern gateway to Whidbey Island.

## You're Invited . . . --- TO VISIT US ---

### DEAR FRIENDS:

Please accept this as an invitation to come to Whidbey. We guarantee that if you visit once, you'll return often.

Whidbey Island can satisfy your particular interest whatever it may be:



**LIVING:** Job opportunities are growing. The Naval Air Station, and new industries being developed has over a million dollar a month payroll. We welcome new industry.

**SCHOOLS AND CHURCHES:** Finest education for your children, first rate basic foundation for college entrance. Churches are well attended and play an important part in Whidbey Island living.



**VACATION PARADISE:** Surrounding South Whidbey we have the famous salmon fishing grounds as well as lakes, picturesque in setting and abounding in trout.

**BOATING, WATER SKIING, SKIN DIVING, CLAM DIGGING, PICNICING, CAMPING, HUNTING, and GOLFING,** as well as indoor sports such as bowling, swimming in indoor pools the year round, weekly clubs and dancing are all available easily and economically.

STAY A DAY — A WEEK —  
OR A LIFETIME — WE WELCOME YOU

**THE SOUTH WHIDBEY  
CHAMBER OF COMMERCE**  
P.O. Box 63 Langley, Wash.





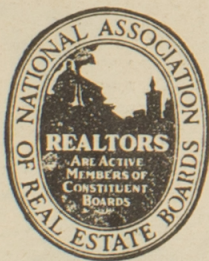
The driftwood buff will find the beaches of Whidbey a treasure trove of shapes and designs similar to this unusually-sculptured piece found on a south Island shore.



Fishermen will not be disappointed in opportunities in waters off Whidbey as indicated by this 49-pound king boated by an Island resident.

COMING TO WHIDBEY? . . . . VISIT

# Freeland Realty



- A Full Service Office
- We do all our own closing without additional escrow costs
- Complete Insurance Service
- Unlimited Mortgage Money to qualified borrowers

## FREELAND REALTY

Box 217  
FREELAND  
EV 2-5289

"IN THE HEART OF THE FREELAND SHOPPING CENTER"





Among the attractions for Whidbey visitors is Mutiny Bay Resort, complete with sandy beaches, boat launching facilities and A-frame-type units for the tourist and his family who want to linger. There are other accommodations on both North and South Whidbey. Address inquiries to Chambers of Commerce in Oak Harbor, Coupeville or Langley.



An annual event of importance to visitors and Island residents is the Coupeville Arts and Crafts Festival. Historic Front Street is blocked off for the festival and hundreds of art lovers wander their leisurely way through the exhibits.

This Special Edition published by Whidbey Island Publishing Company  
Oak Harbor, Coupeville and Langley



# Vacation **TIME**

- HEATED INDOOR POOL
- TRAILER AND CAMPER SPACE
- MODERN MOTEL FACILITIES
- TACKLE STORE & BOAT HOUSE
- BOAT LAUNCHING FACILITIES
- LARGE BOAT DOCK
- GASOLINES and FUELS
- MODERN GROCERY STORE
- CAFE . . . . VIEW DINING
- BOAT and MOTOR RENTALS

*"OUR ENTIRE EFFORT IS SEEING  
THAT VISITORS ENJOY THEIR STAY"*

#### NEW MOTEL ROOMS —

Sleeps Two and Four. Automatic heat, television, wall to wall carpeting. Units are connected to indoor swimming pool — enjoy complete comfort. Two persons \$12.00/day — Four \$14.00/day — less \$2.00/day for seven days or more.

#### ULTRA MODERN UNITS —

Sleeps Four. Full kitchen and bath, automatic heat, television, completely furnished. Two persons \$12.00/day — less \$2.00/day for seven days or more.

#### DELUXE MODERN UNITS —

Sleeps Four. Full kitchen, toilet and automatic heat. Showers in modern service building, completely furnished. Two persons \$10.00/day — less \$1.50/day for seven days or more.

#### CAMPING UNITS —

Doubles and Singles. Doubles have two bedroom and frontroom kitchen combination. Singles have one room with double bed. These units have wood cook stoves and toilets, water at front door. DOES NOT include cooking utensils or linens. Doubles, four persons \$6.50/day. Singles, two persons \$4.50/day — less 50c/day for seven days or more.

#### SERVICE BUILDING —

Modern rest rooms and hot showers for trailer park and campers.

#### TRAILER PARK —

Water and Electric Hook-up. Four persons \$2.00/day — less 25c/day for seven days or more. (Propane bottles filled.)

#### INDOOR HEATED SWIMMING POOL —

Diving and Wading. Ages 10 and under 75c/day. Over 10 years \$1.00/day.

#### MODERN TACKLE STORE AND BOATHOUSE —

COMPLETE line of Tackle sale or rent. Kicker boats, live and frozen bait, gas, oil, fish cooler and launching ramp. Boats \$5.00/day — less \$1.00/day for seven days or more. Motors \$5.00/day, poles \$2.00/day.

#### LARGE DOCK —

Private boats year round storage, separate private boat launching for boats to 21 feet (operated any tide). Gas pump on dock.

#### GROCERY STORE —

Large Stock of Groceries, beverages, ice cream, sundries, etc.

#### MODERN CAFE —

Marine View Dining, service window for take-out orders. Breakfast, lunch, dinner and short orders. Early morning till late evening.

#### ADDITIONS —

Extra Persons — Units \$1.00/day, trailers 50c/day. Linen for camping units \$1.00/bed/change. Sales tax on all items. Prices subject to change.

ON SOUTH  
WHIDBEY  
ISLAND

## BUSH POINT RESORT

EV 2-4400  
FREELAND

**2 DAY -  
- VACATION -  
ONLY  
\$49.50  
+ PLUS TAX  
FOR TWO**

**INCLUDES:**

**TWO NIGHTS LODGING IN NEW MODERN  
MOTEL -- TELEVISION -- SWIMMING  
IN LARGE INDOOR HEATED POOL  
TWELVE MEALS IN RESORT CAFE**

TWO ADULTS & TWO CHILDREN w/COTTAGE - MEALS - SWIMMING - TWO DAYS \_\_\_\_\_ \$74.50

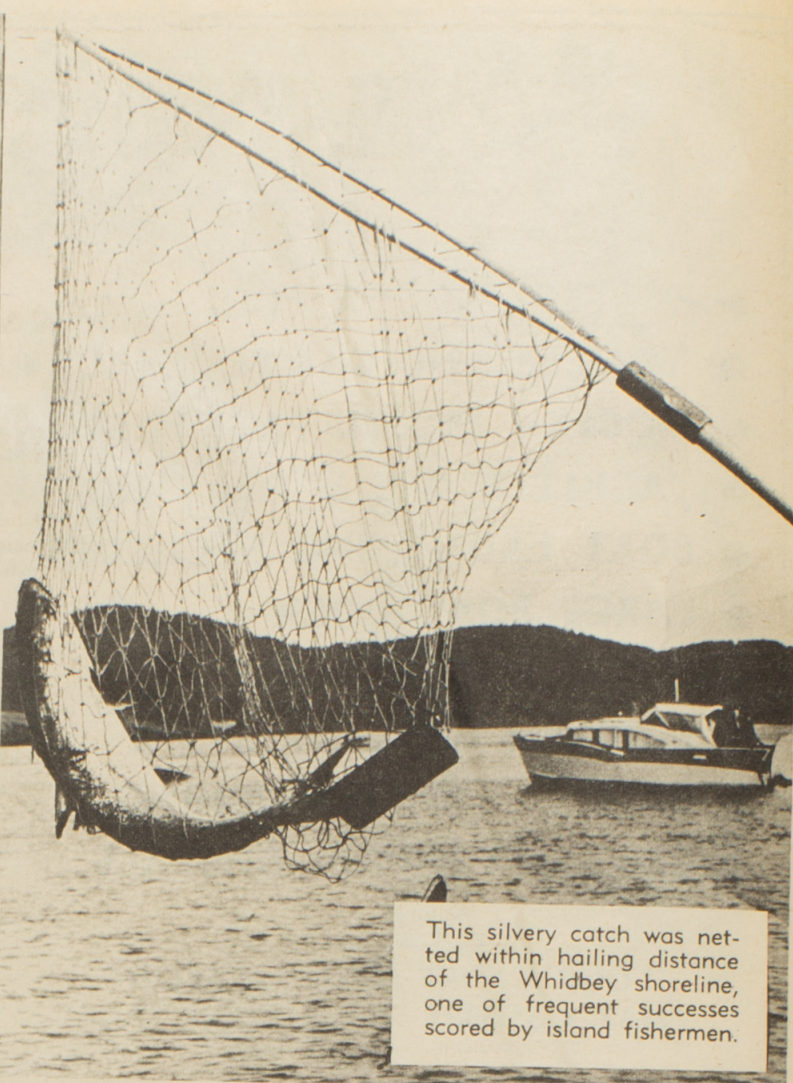
1½ HRS. FROM DOWNTOWN SEATTLE

CALL OR WRITE BUSH POINT RESORT  
FREELAND, WN., SO. WHIDBEY ISLAND EV 2-4400

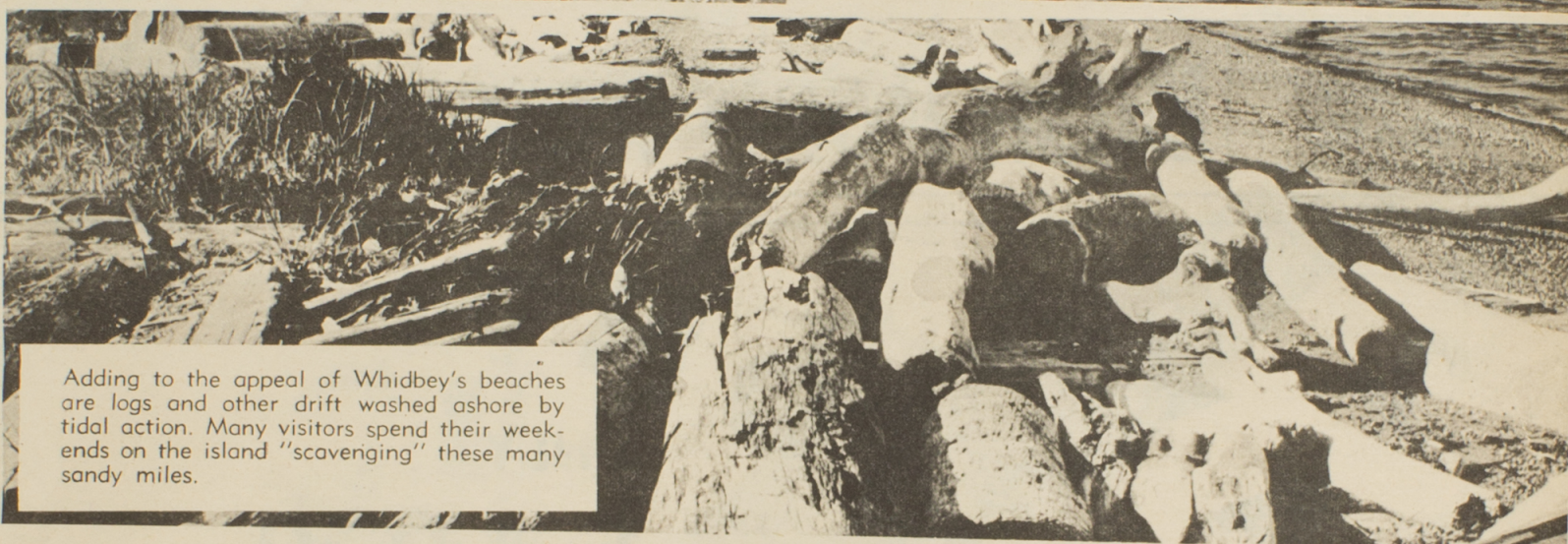




A pastoral atmosphere also identifies Whidbey Island where farms small and large are still operated despite increasing land useage for residential and recreational purposes.



This silvery catch was netted within hailing distance of the Whidbey shoreline, one of frequent successes scored by island fishermen.



Adding to the appeal of Whidbey's beaches are logs and other drift washed ashore by tidal action. Many visitors spend their week-ends on the island "scavenging" these many sandy miles.



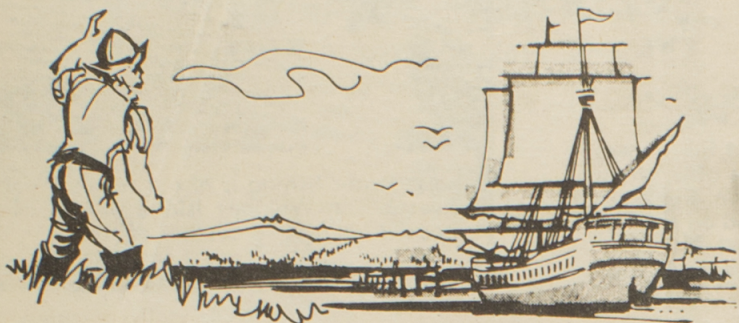
The growing popularity of golf on Whidbey has resulted in installation of three courses in recent years, including Whidbey Golf and Country-Club, Oak Harbor; Holmes Harbor Golf and Yacht Club, near Freeland, and the Gallery course for personnel of NAS Whidbey. A fourth course is being rushed to completion at Useless Bay, another south Whidbey residential and recreational development.



# WELCOME FROM WHIDBEY'S B USELESS BAY COLONY

## "Puget Sounds Finest Residential Playground"

Whidbey Island is 60 miles long and is the second largest island in the United States. Lying behind the rain barrier of the Olympic Mountain range, Whidbey has considerably less precipitation than many other Puget Sound areas. The Island can boast of less than 20 inches of rainfall annually — about half of the surrounding areas.



### AN EXCITING PRESENT

Today Whidbey Island has all the charm of the country combined with the facilities and comforts of the city. Whidbey is a land of forests, rail fences, wind swept bluffs and sandy beaches covered with driftwood — a place in which to find relaxation, contentment and enjoyment of life.

Automobile access to Whidbey is by way of the Washington State ferries from Mukilteo or by Highway 525 from Mount Vernon and the Deception Pass Bridge. An increasing number of Northwest residents find the trip an ideal Sunday outing.

### AN UNBELIEVABLE FUTURE

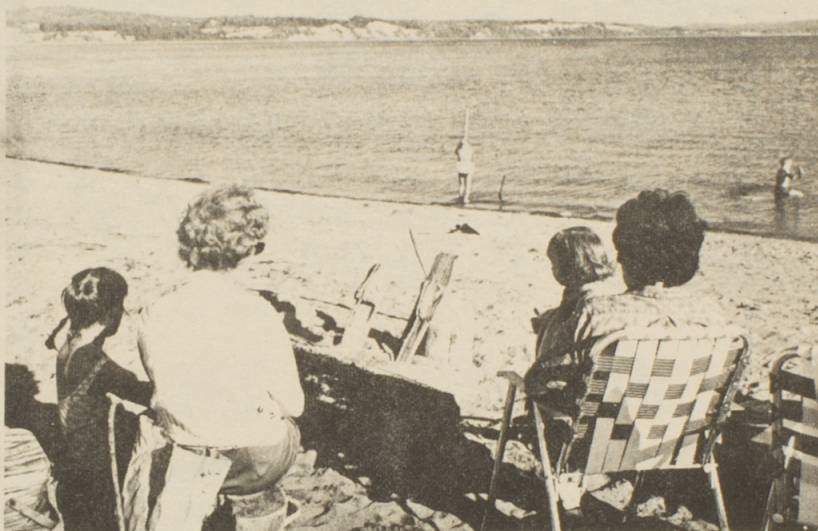
What was once a rugged wilderness is today, Useless Bay Colony, a multi-million dollar master planned residential playground, that offers a complete variety of spacious waterfront, golf course and spectacular view homesites to be serviced by marina, shopping and community recreational center.

A new dimension is being achieved at Useless Bay Colony. Here may be found all of the modern conveniences of permanent living PLUS all that Nature affords for recreation and relaxation. Golf, water sports, fishing, riding, beachcombing are just minutes from your doorstep.

### AN HISTORIC PAST

Captain George Vancouver named this land Whidbey's Island in honor of Joseph Whidbey who discovered Deception Pass on June 10, 1792. Later the same year Vancouver sent a small boat to investigate a bay on the Southwest shore of the island. It ran aground so he wrote "Useless" across the chart. Thus, Useless Bay was named.

United States Marshall Anderson took the first Island County census in the fall of 1853. At that time there were 195 inhabitants and 80 voters in the County. (By comparison, King County including Seattle, had only 170 inhabitants and 11 voters.) In 1964 the population of Island County stood at more than 20,000 including about 4,600 military personnel and 700 civil service workers.



USELESS BAY COLONY'S SAFE SANDY BEACH

### USELESS BAY COLONY'S MASTER PLAN INCLUDES:

- 18 Hole Challenging Golf Course
- Deluxe Club House
- Olympic Size Swimming Pool
- Tennis Courts
- Community Beaches
- Boulevard Streets
- Total Underground Utilities
- Private Beach Club

## Permanent & Vacation Homesites from

**\$2,500**      **\$250 Down**  
**\$25 Month**

Price includes Membership in Useless Bay Beach Club

### ONLY 50 MINUTES FROM SEATTLE

**TO REACH:** Take pleasant fifteen minute ferry ride from Mukilteo to Whidbey Island. Drive exactly 7½ miles from ferry dock on main Highway 525 to MacPherson's "Useless Bay" office.

## MacPHERSON'S REALTORS WHIDBEY BRANCH

P.O. Box 72 — Freeland, Wash.  
EV 2-5299

### USELESS BAY COLONY

P.O. Box 72, Freeland, Washington

☐ PLEASE SEND BROCHURE OF USELESS BAY COLONY

I'm especially interested in the following home site:

☐ Waterfront      ☐ Fairway      ☐ View

Name \_\_\_\_\_

Address \_\_\_\_\_

City \_\_\_\_\_

State \_\_\_\_\_

Zip \_\_\_\_\_





African geese paddle their way across a North Whidbey pond. Still a locale where wild fowl and game abound, deer, rabbits, ducks, pheasant, quail, etc. are "friends" of many island families.



A placid scene is created by a rowboat tied to a log on the shore of a Whidbey lake. Some of Washington state's most appealing scenery is found on this abundant island in North Puget Sound.



Fresh water fishing is also a recreational diversion on Whidbey Island where well stocked lakes yield catches of trout.

### South Whidbey . . .

lonely driving down roads all by himself—they would definitely want out of here.

The Island is famous, as everyone knows, for both its salt and fresh water fishing and saying it again only repeats something you hear all the time. It is important, therefore not to neglect the clam, oyster and crab grounds. In this respect it's a good idea to become chums with one of the "natives" or you will have to discover the best spots all by yourself—and trying to be sneaky by following other people around just won't work because there aren't many people, they go at odd hours and might not appreciate you following them around.

Islands are notorious for attracting recluses and whether a person arrived here to raise thoroughbred race horses or buy a holly

orchard on a bay, they all adore their freedom and privacy. The place is a natural for artists or anyone with an "odd ball" hobby simply because the trees insist on looking windswept, the cliffs spectacular and the beaches empty, but better yet just full of items to collect for that corner by the window.

Scenery? Did someone mention scenery? Well now if you have one of those hard-to-come-by brochures you will note the following under scenic spots: Possession Point, Glendale, Bush Point, West Beach, Saratoga, Holmes Harbor, Mutiny Bay and Lone Lake. But this would leave out places like Useless Bay, Baby Island, Cultus Bay, Goss Lake, Deer Lake and of all things South Whidbey State Park. The fact of the matter is if you want to find someplace unscenic you will have to hunt a low place—there

are none—in the middle of South Whidbey where you can't see the Puget Sound and the Olympic Range on one side or the Puget Sound and the Cascade Range on the other. You might be able to find a place where you can't see the Sound, but trees and mountains you can't lose them.

And if you plan on submerging yourself in the one incorporated town of Langley, its right on the edge of that water and plans to take more advantage of the fact by installing a large boat marina—the present public dock can accommodate between 10 and 15 boats. And the setting must be nice because the federal government has decided to make Langley the site of a modern senior citizens village, which will be completed in two years.

Industry? Well there are two saw mills.

Property for sale? About 7,000 lots of it.

Fun celebrations? The annual Crab Feed happened in March so the next big event is the Island County Fair, August 26, 27 and 28 at Langley.

Clubs? All sorts including hobby groups and an Over-Fifty Club.

History? It's in the brochure—if you can't find one talk to the natives.

Miscellaneous: flowers grow well, the rainfall is less than 20 inches, people say hello when you pass them.

Here's a few places where you can stay for a day or several weeks.

Maxwelton Park: ball park, picnic grounds, kitchen, swimming.

South Whidbey State Park: beach, secluded picnic areas.

Dan Porter park in Clinton: ball park picnics.

Bush Point Resort: Covered indoor pool, 35 boats for rent, 17 cabins, restaurant, boat storage.

Columbia Beach Resort Motel: 2 boats, 8 cabins

Double Bluff Motel.

Fourniers Trailer court

Jim and John's Resort: 22 boats, 12 cabins

Langley Marina boat storage and marine supplies for boaters  
Mutiny Bay Resort: 20 boats, 20 cabins for 100 people or more.

Robinson's Resort: 9 boats, 6 cabins boat storage

Shore Meadows: pool, 12 boats, 13 cabins

Sunrise Beach Resort: 13 boats, 9 cabins

Til-Tara Court: 4 cabins



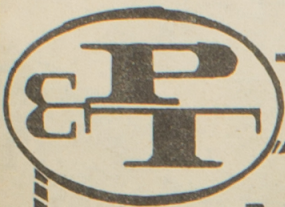
Clamdiggers have their inning at favorite grounds along the Whidbey shoreline. Scores were out in quest of the sand-locked delicacies, many of which goes into the tasty chowder which is a specialty of many island restaurants.



**E**SCAPE . . . INTO YOUR OWN **L**ITTLE **P**LEASURE **K**INGDOM

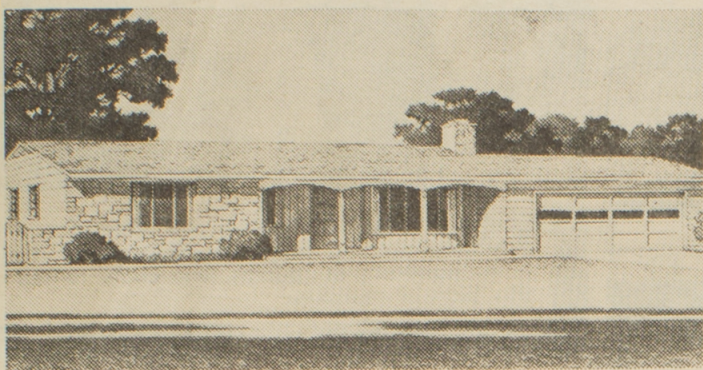
## WHIDBEY ISLAND

- WHERE LEISURELY LIVING BEGINS -



### THE VILLAGE GREEN

SOUTH WHIDBEY'S FINEST RESIDENTIAL DEVELOPMENT



ALL VIEW LOTS OVERLOOKING  
**HOLMES HARBOR**

Paved Streets — No Dust, Dirt  
or Assessments

\* \* \* \* \*

BIG LOTS — Average 10,000 sq. ft.

\* \* \* \* \*

Excellent Water Supply  
FIRE HYDRANTS IN

\* \* \* \* \*

CONVENIENCE . . .  
Beach - Bus -& Shopping only a short walk

\* \* \* \* \*

**PRICED RIGHT**  
**\$2,250 to \$3,250**  
**ON CONVENIENT TERMS**

### SUNLIGHT SHORES



**LARGE CLEARED TRACTS**  
with SWEEPING WESTERLY VIEW  
or SECLUDED WOODED 1/2 Acre TRACTS

\* \* \* \* \*

ALL HAVE RIGHTS TO LEVEL  
COMMUNITY BEACH

\* \* \* \* \*

THE DEVELOPMENT PLANNED  
FOR FAMILY FUN

\* \* \* \* \*

**LARGE HEATED POOL**  
**& CLUB HOUSE NEAR**  
**THE SANDY BEACH**

\* \* \* \* \*

**TRACTS START**  
**AS LOW AS**  
**\$1,050.00**

— LOW DOWN PAYMENT —  
— LOW MONTHLY PAYMENTS —

FOR THE VERY BEST IN CHOICE OF WATERFRONT, VACATION SITES,  
SECLUDED ACREAGE OR RETIREMENT HOMES STOP AT

# POPE & TALBOT INC.

IN THE WEST SINCE 1849

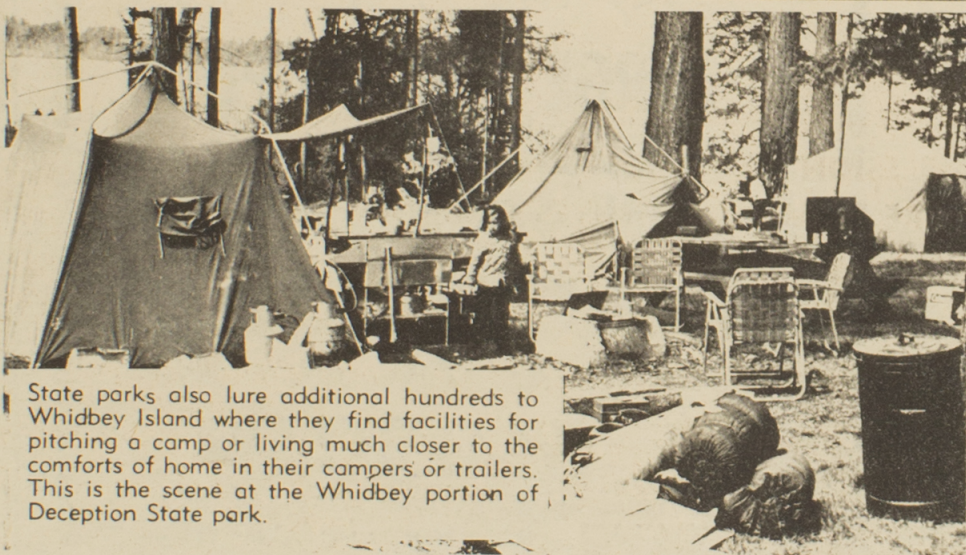
**EV2-5233**

**FREELAND, WN.**

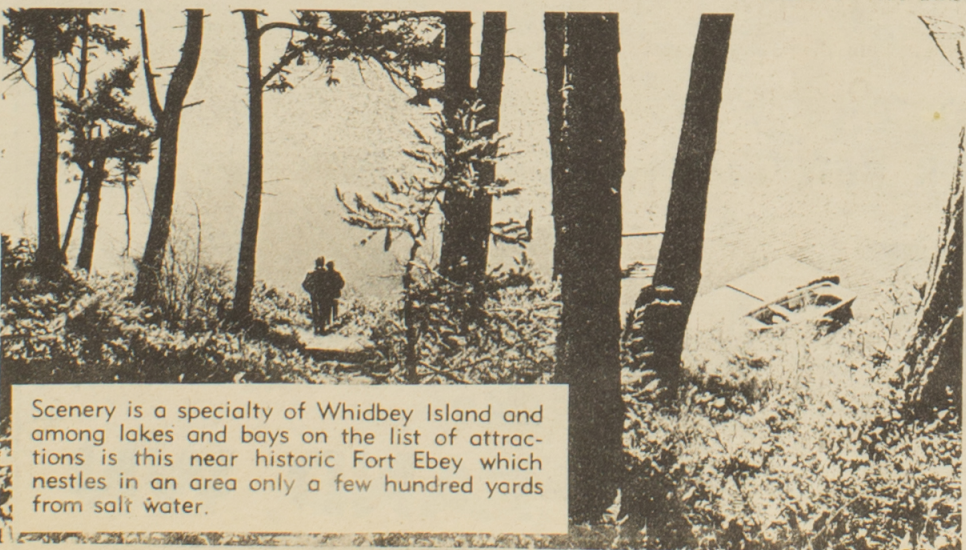




There is a moorage for pleasure craft of varying lengths from North to Central to South Whidbey. This is the recently-completed float at Coupeville where scores of tourists yachtsmen tie up to visit the quaint mid-Whidbey community famous for its historical old buildings and dwellings and site of the Island County Courthouse.



State parks also lure additional hundreds to Whidbey Island where they find facilities for pitching a camp or living much closer to the comforts of home in their campers or trailers. This is the scene at the Whidbey portion of Deception State park.



Scenery is a specialty of Whidbey Island and among lakes and bays on the list of attractions is this near historic Fort Ebey which nestles in an area only a few hundred yards from salt water.



The Alexander blockhouse, in Coupeville, is a major historical attraction, visited annually by hundreds of tourists who come to see this pioneer structure.

### North Whidbey . . .

Salmon barbecue held at the City Beach Park. The public is invited to both of these events.

In 1900 Oak Harbor existed around a cluster of small store buildings on the waterfront. Farming supported the community, but from 1900 to 1920 the town began to grow. A cannery, a creamery, docking facilities were added, high school classes opened, and a new elementary school appeared. The town was incorporated with Jerome Ely as its first mayor and Ed Vanderzicht its first town marshal. Churches were built; a high school; an improvement club; a lodge hall.

Until 1935 two ferries linked North Whidbey with the mainland; at Deception Pass and between Camano and Olsen's Landing. But with the construction of Deception Pass Bridge, a project of long standing, Whidbey Island was opened to a stream of traffic from the mainland and the beginning of another era.

Deception Pass State Park is the most popular of all Washington state parks, with both salt and fresh water, camping and trailer sites, and unsurpassed scenery.

In 1941 the Navy arrived to change the economic and cultural status of North Whidbey. The bay-side village of less than 700 population is now a well planned third class city with population of 5,000; the district includes a senior high school, a junior high school and four modern elementary schools that rank high in state in educational facilities. Complete shopping and professional services, and available in the community.

Navy people take an active part in community activities, combining ideas from all over the world with pioneer traditions and local customs.

At present Whidbey Island is on the threshold of another era; the introduction of the A6A jet bomber squadrons, the first on the West Coast. The resulting Navy buildup

of facilities for the A6 program is expected to increase Navy personnel and indirectly the civilian population greatly within the next two years; new businesses and services are mushrooming on North Whidbey; school officials are planning for a substantial increase in population; and activities are being stepped up in preparation for one of the biggest Navy and community developments since 1941.

### Central Whidbey . .

land; and its "Port of Sea Captains" history is embellished with the silks and satins of the far-east.

Just south of Coupeville lies Admiralty Head where Fort Casey was built in pre-World War I days and which now is a State Park. The lighthouse is now a museum of early-day fort memorabilia, and a caretaker oversees the steady stream of tourists who come to inspect the extensive bunkers and cannon placements of the First World War.

A small close-knit community works for area improvement and cultural advantages. Yearly the Coupeville Festival Days combine an arts and crafts festival on Front Street with a two day salmon derby and Indian barbecue on Sunday to host hundreds of tourists and people from nearby communities. This year the festival will be held August 20-21, and the public is invited.

County parks near Coupeville include the Keystone Park adjacent to Fort Casey, where there is a boat ramp and trailer park and good fishing. Here also is the Keystone Ferry landing terminal for the ferry between Keystone and Port Townsend on the Olympic just south of Coupeville on highway 525, displays twentyfoot rhododendrons bloom in May.

The area is rich in squash turkey and strawberry farming.

The largest game farm west of the Rockies is located near Coupeville.

**VISIT WHIDBEY**  
**'Just For The Fun Of It'**



# ONE STOP COVERS WHIDBEY ISLAND WHEN YOU PULL UP AT THIS SIGN

WATERFRONT



HOMES - LAND

WE HAVE 4 OFFICES & 8 EXPERIENCED SALESMEN  
IN RADIO CONTROLLED CARS READY TO SHOW YOU:

## Over 900 Listings

*including:*

more than 100 Waterfront Properties

PLUS

Hundreds of Acreages, Homes & Lots

# FREE

12 Page Summer Catalogue of all listings  
& Brand New Map of North and South Whidbey

Available at all offices or by writing P.O. Box 95, Freeland, Wash.

WHEREVER YOU TRAVEL ON BEAUTIFUL WHIDBEY ISLAND  
BETWEEN POSSESSION POINT AND OAK HARBOR  
YOU ARE NEVER MORE THAN 10 MINUTES FROM AN OFFICE

### CLINTON BRANCH

1/2 Mile from the Ferry Dock  
on Right Side of Highway 525

EV 2-4411

### MAIN OFFICE

in FREELAND PLAZA

AT THE TIKI  
on Highway 525 9 miles from Ferry

EVERGREEN 2-5244

### GREENBANK BRANCH

West Side of Highway at Greenbank

ORANGE 8-4491

### COUPEVILLE BRANCH\*

1/2 Blk. So. of New Hwy. on Main St.

OR 8-4822

\*(Opening July 30)

FOR THE LARGEST PROPERTY SELECTION  
SEE WHIDBEY'S LARGEST REALTORS!

# WHIDBEY REALTY



# WHIDBEY *The Island Beautiful*



## DO YOU KNOW...

Whidbey Island is famous for its year around Salmon Fishing. The waters also abound in Rock Cod, Ling Cod, Rock Bass, Sole, Perch, etc.

There are eight lakes on Whidbey Island. Most of these lakes are stocked annually with native Cutthroat and Rainbow trout and have public access and boat launching areas, provided and maintained by the State Game Department.

The annual Around Whidbey Outboard Race course completely circles the Island — a distance of approximately 100 miles. Entries are limited to sport fishing-type outboard boats and motors.

Whidbey Island is ten miles across at the widest place but no point on the Island is more than three miles from salt water.

## POINTS OF INTEREST

- A. Deception Park and Cranberry Lake (this lake, once salt, was the scene of the first picnic held on Whidbey Island, so far as is known)
- B. Fort Nugent Picnic Area
- C. Public Boat Ramp (once the site of Chief Squiqui's Long House)
- D. Monroe's Landing
- E. Alexander Blockhouse
- F. Coupe House ((black walnut tree planted by Mrs. Coupe in 1853)
- G. Indian Cemetery
- H. Rhododendron Park
- I. Davis Blockhouse
- J. Crockett Blockhouse
- K. Admiralty Head Lighthouse and Museum
- L. Fort Casey
- M. Public Boat Ramp
- N. Dan Porter Memorial Park
- O. Public Beach—Picnic Area
- P. Public Beach — Picnic Area — Launching Ramp
- Q. Public Boat Ramp, Camp and Trailer Park
- R. Oak Harbor City Beach — 2 Boat Launching Ramps
- S. Coronet Bay — Dock and Boat Launching Ramp
- T. Boat Launching ramps in Coupeville
- U. Boat Launching ramp Penns Cove
- V. South Whidbey State Park