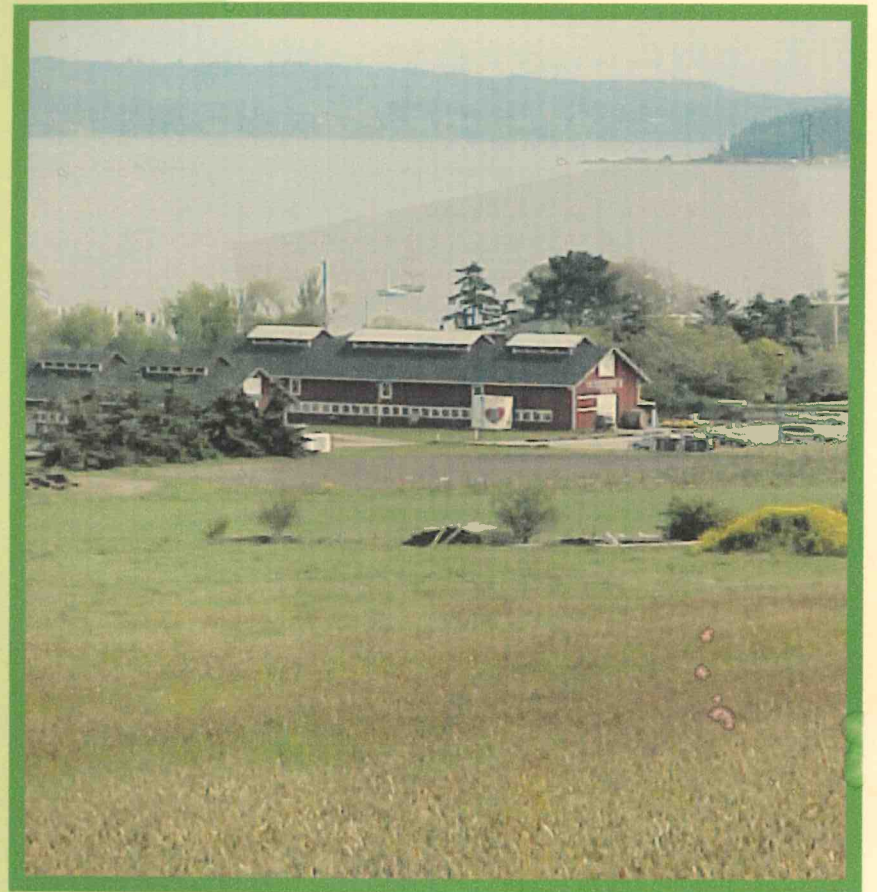


ONE HUNDRED YEARS AT
GREENBANK



COPYRIGHT 2003
SARATOGA DESIGN
GREENBANK, WASHINGTON
ALL RIGHTS RESERVED



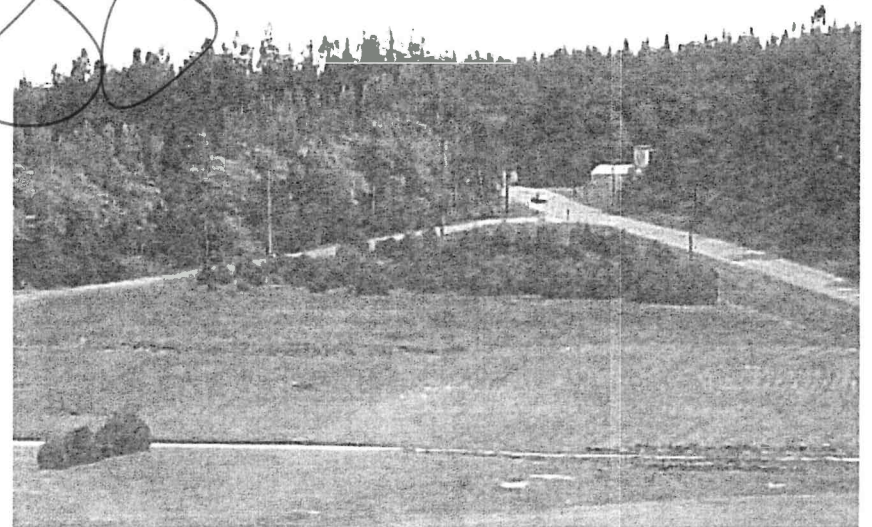
By Jerry Mercer
sponsored by
The Greenbank Centennial Committee

100 YEARS AT GREENBANK

One Hundred Years at Greenbank

1904 - 2004

Enjoy!
Jerry Mercer

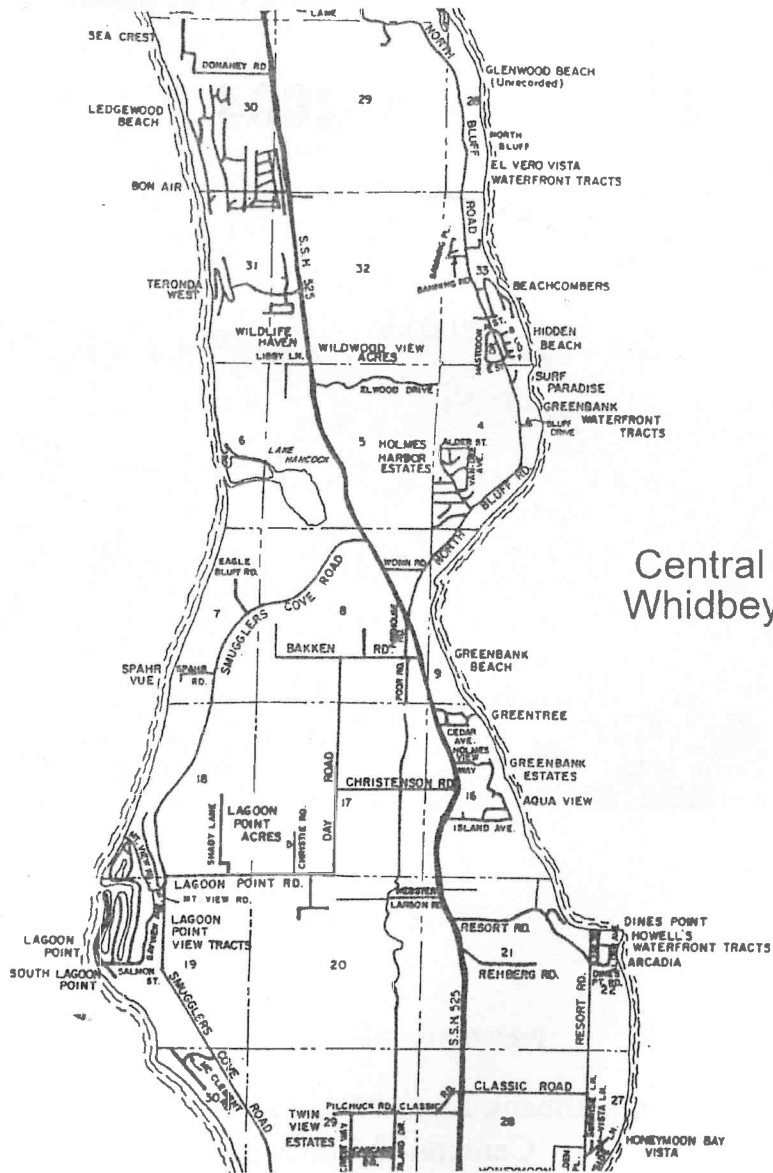


By Jerry Mercer

Published by Saratoga Design for

Greenbank Farm Management Group
Centennial Committee

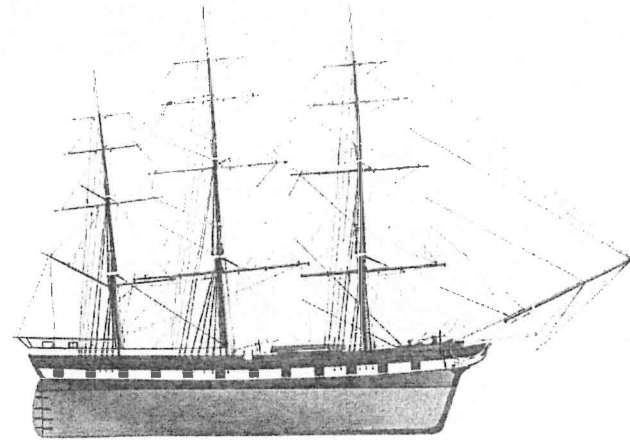
All rights reserved



Central Whidbey

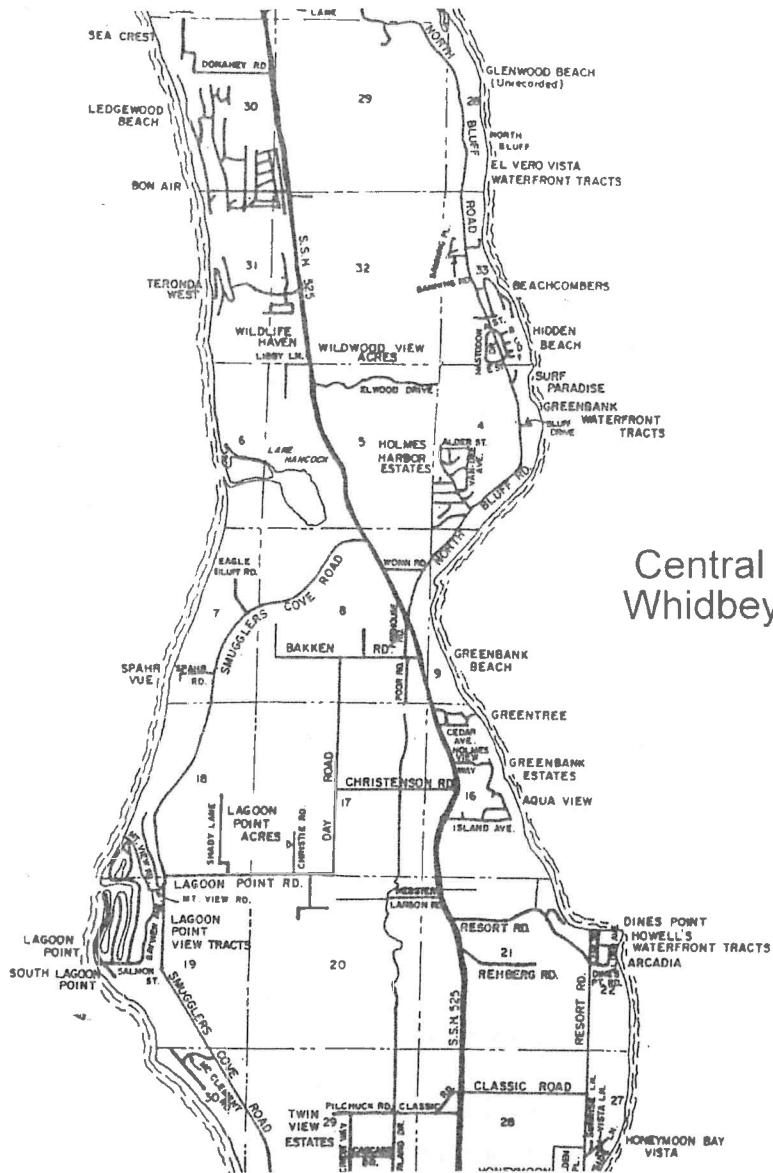
Introduction

The Russians, the Spanish, the English, and the “Bostons” in their search for the fabled Northwest Passage opened the North Pacific Coast of the American continent. It wasn’t until 1792, however, that Captain George Vancouver in HMS *Discovery* passed through the Straits of Juan de Fuca and “discovered” what we now call Puget Sound.



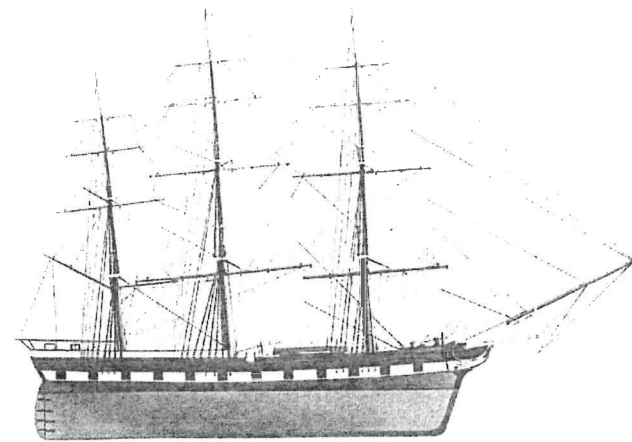
A Typical Brig of the 1800s

During his exploration of the area, he sent his sailing master, Joseph Whidbey, in a longboat to investigate what was determined to be an island nearly fifty miles long, an island of large timber, meadow-like prairies of tall grass, and clam-filled beaches. In honor of his circumnavigation, Vancouver noted the discovery as Whidbey’s Island on his chart. The island had a spectacular beauty, wild, and yet some parts were reminiscent of the great parks of 18th century Europe.



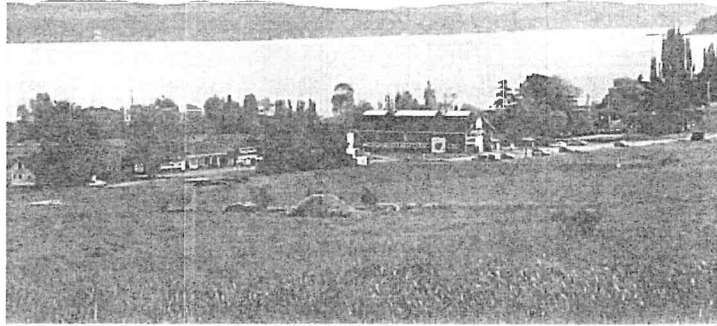
Introduction

The Russians, the Spanish, the English, and the “Bostons” in their search for the fabled Northwest Passage opened the North Pacific Coast of the American continent. It wasn’t until 1792, however, that Captain George Vancouver in HMS *Discovery* passed through the Straits of Juan de Fuca and “discovered” what we now call Puget Sound.



A Typical Brig of the 1800s

During his exploration of the area, he sent his sailing master, Joseph Whidbey, in a longboat to investigate what was determined to be an island nearly fifty miles long, an island of large timber, meadow-like prairies of tall grass, and clam-filled beaches. In honor of his circumnavigation, Vancouver noted the discovery as Whidbey’s Island on his chart. The island had a spectacular beauty, wild, and yet some parts were reminiscent of the great parks of 18th century Europe.



View of Holmes Harbor

Whidbey Island today retains this charm, this magnetism, that draws people from around the world and often captivates them so completely they stay to build their homes. Sometimes islanders enjoy the beauty and comfort of Whidbey but fail to recognize the pioneering efforts of earlier arrivals.

This brief history of Greenbank was written in conjunction with the celebration of Greenbank's Centennial and was sponsored by Greenbank Farm Management Group's Centennial Committee. Its intent is not just to document the beginnings of this small town but to provide an overview of its one hundred year history for friends, visitors, and residents. It also intends to inspire us to celebrate the Greenbank experiences of today and the Greenbank community's future.

Available documents and histories of Whidbey Island provided some information about the Greenbank area. Some of these are listed in the bibliography, most of these informative books are available through the Sno-Isle Library System and local book stores. Some conversations with long-time residents were reviewed and the author thanks everyone who contributed in some way to this booklet's creation.

As with all histories of this type, occasionally memories are faulty, newspapers erred, and some historical data is still to be discovered and documented. We have relied on other works and memories to compile this account and if later it is discovered that some minute details have been reported in error, please accept our apologies. The reader may be assured that the facts presented here are based on the best information available and there might be some disagreement as to exact dates. Perhaps in the future a greater amount of factual information will be assembled and the history of Greenbank will grow accordingly.

Illustrations have come from numerous sources, including recent photographs by area residents, old photographs from the farm, and drawings from books about the Northwest. Thank you all!



Some Greenbank Residents



Indians Fishing on the Beach

In the Beginning

The first residents of Whidbey Island arrived thousands of years before Vancouver. The bountiful land and surrounding water provided everything needed for sustenance: fish, venison, berries, clams and the edible camas root. In those days, predators such as bears and wolves inhabited Whidbey Island. The ancient trees and brush of the thick forest sheltered animals of all kinds and the first Americans led full and comfortable lives on the shores of Whidbey Island.

While many people may have inhabited the Greenbank area, part of the Skagit tribe was known to live on the beach at Holmes Harbor in the early days of the settlers' arrival.

It isn't difficult to visualize the magnificence and beauty of those primeval forests that existed before the white man arrived. Grassy meadows could be found here and there, providing food for a large number of deer. Several kinds of berries and roots and a variety of other herbs and vegetation grew that were useful and nutritious to the natives who lived in the area. Fish abounded in the lagoons and along the shores. All kinds of animals roamed the forest. The shore was abundant with shellfish: oysters, clams, and mussels. Crabs were available for the taking.



Large Indian Canoe

The Native Americans spoke dialects that were somewhat different and after the traders of various countries came, a trade language, or jargon, known as *Chinook* developed and was used.

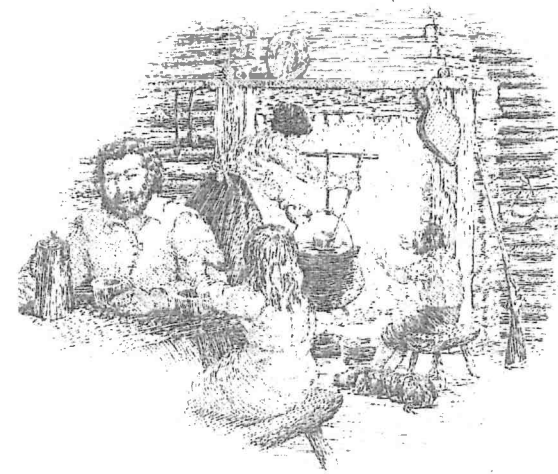


Skagit Woman at Work

Native Americans who belonged to various other tribes such as the Lummi, Snoqualmie, and Tulalip groups inhabited other parts of the island and the nearby mainland. Occasionally these tribes were raided by the fierce Haida from Vancouver Island who came south to obtain slaves and plunder. The local tribes were mostly peaceful however and helped the new arrivals. The Native Americans had little immunity from the diseases that arrived with the white men and many died in the late 1800s. During those early years of settlement, the Native Americans who remained in the area provided an inexpensive and greatly beneficial labor force. They also provided local transportation in their large dugout canoes. Some of the large canoes required many men to paddle them and could carry hundreds of pounds of freight and passengers.

The Settlers

One of the earliest arrivals was Alexander Rosenfield and his family. They homesteaded land just North of Lake Hancock in 1889. Although there are few records of the earliest settlers south of Whidbey Island's central prairies, we know that a few brave hearts explored the region, befriended the natives and eventually picked a promising spot for themselves in this beautiful country. These newcomers built small cabins and quickly cleared land for farming.



A Settler Family at Home

Why did they come to Greenbank? Good farm land was available, although not on the scale of Ebey's Prairie where the first settlers built homes. Those choice portions were claimed years before and much of the land in what would someday be the Greenbank area was heavily wooded with giant firs and cedars. Before the land could be farmed, a settler had to clear a portion by first logging it off with axe and saw, then removing the stumps and rocks with horses, oxen and manpower, and finally plowing and

sowing. This took an enormous amount of labor and skill. Stumps too large to be removed were usually burned where they sat.

The forests provided a livelihood for many of the newcomers, some of whom had arrived from as far away as Finland. Trees cut near the open water were easily towed or hauled on deck to nearby mills, ending up as pilings in San Francisco, or as spars in France and England. Some logs destined for local use were cut into planks by using a pit saw.

It was often difficult to provide food for the family table in those early years, but the abundance of game and fish on Central Whidbey aided the settlers tremendously.

The deer in the forests made hunting not just a pastime, but an industry during the early years. Venison was common fare in most households and the logging camps. At one point deer actually became scarce due to over-hunting. Other game was usually available and some early accounts mention geese and ducks on the family table.

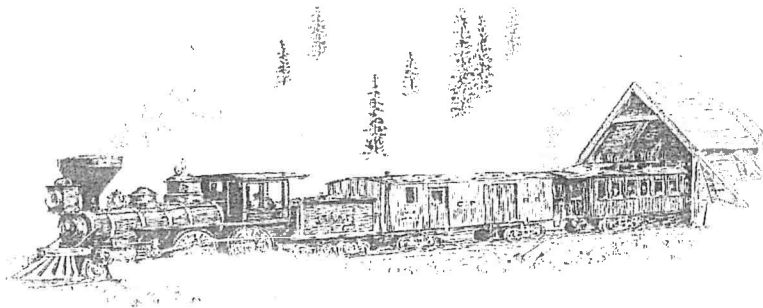


The Greenbank shore is partially protected except during occasional heavy southerly winds and the sand and gravel beach provided a suitable landing place for small boats and canoes. Small boats provided the only means of transportation to and from the island and brought supplies to the early settlers. They also carried away the new residents' products to ports up and down the Saratoga Passage and Puget Sound. At a later date the Greenbank beach would become a favorite vacation spot for fishermen and others who came to escape the more populated areas and for the enjoyable climate and pace of Central Whidbey.

Lake Hancock, on the west side of the island, was the site of a large fish trap for several years. The mouth of the inlet to the "lake" was bridged by a log and branch dam that allowed salmon and other fish to enter but not to leave. The fish trap was managed by several men who maintained the trap and collected the fish. In those days fish were dried and salted to preserve them until they reached the market or were used at home or on board ships. Besides farming and logging, fishing became an important local vocation. Fishing was good and a few resorts were eventually built and maintained for vacationers.



A Salmon from Lake Hancock (about 1914)



Land Grants and the Railroad

During the last half of the 19th century railroads played an increasingly important role in the westward expansion of the United States. Railroads were able to obtain land grants of western lands from the federal government. These grants encompassed thousands of acres on each side of a railroad's proposed route. This concept was intended to increase the number of people who would move into the new territories served by the railroad. Development of these lands was anticipated to be good for the United States and the railroads also.

Several times before the 1900s claims were made that Central Whidbey Island would be the next railroad boom town. Many people speculated on these rumors by purchasing land in the area, but these speculations fell through. While the only railroad ever built was a minor affair used to haul logs on the south end of Whidbey, railroads did play an important part in the founding of Greenbank.

At one time the land around Greenbank was owned by the Puget Sound and Lake Superior Railroad. Litigation with the Northern Pacific Railroad resulted in 50,000 acres distributed to investors and about 10,000 acres of this was located on Whidbey Island.

A gentleman named Calvin Philips became involved in the excess railroad lands. Mr. Philips moved to Pennsylvania and later to Washington (around 1885) where he became associated with the Penn Mutual Insurance Co. Cal was from a Quaker family and some of his activities, like bicycling were frowned upon. No doubt he was anxious to be his own man. He finally moved to Tacoma and became more involved in real estate.



Calvin Philips – Greenbank's Founder

Philips was involved in a partnership that acquired the 10,000 acres of property formerly owned by the railroad, partly at Oak Harbor and partly at Greenbank. In one month the 5,000 acres at the north end of Whidbey were sold. Mr. Philips purchased 1500 acres himself near the center of the island. Developing his holdings

and the sale of land in the area became a substantial project for Calvin Philips.

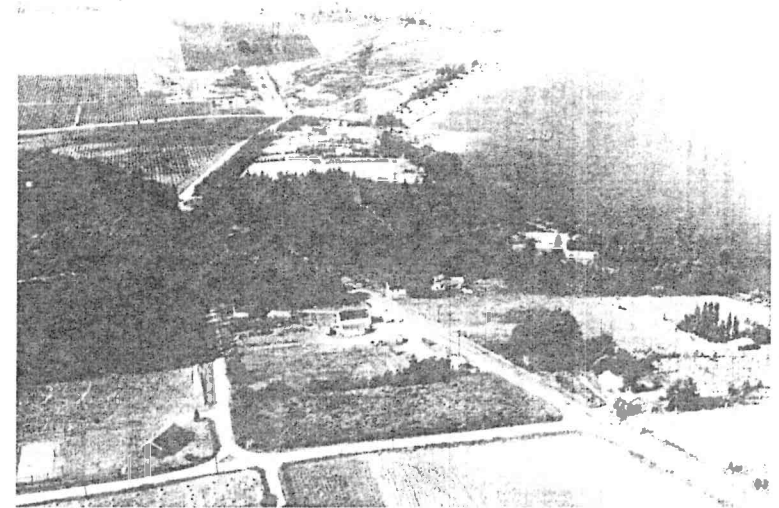
The Greenbank property was heavily forested but included areas of grassland and waterfront as well. The beach along the west side of Holmes Harbor was suitable for bringing in ships. In order to make this investment produce earnings for his partners back east, Cal Philips had to become creative to promote land sales at Greenbank. The depression of 1893 made this task difficult.

Cal believed it was necessary to develop the area in order to attract buyers, so he planned a large and modern farm on the saddle of land east of Lake Hancock. The farm was designed as a dairy farm and included large barns and houses. More about the farm later.

The Town of Greenbank

Greenbank is located about twenty-five miles north of the present day ferry landing at Clinton. It's at the mouth of Holmes Harbor, facing the Saratoga Passage and Camano Island to the east. The view of the Cascade Mountains is spectacular. Looking east from Greenbank, one can see Rocky Point and tiny Baby Island, said to be a fishing resort at one time. To the west, the Olympic Mountains rise above the peninsula and the northern part of Puget Sound. Port Townsend, a major port in the late 1800s, can be seen in the distance. Mount Rainier and Mount Baker are both visible.

Greenbank's proximity to the Straits of Juan de Fuca and its location east of the Olympic Peninsula with its tall mountains, creates a dryer climate than other parts of the island. Greenbank's distance from the Cascade Mountains' foothills to the east results in less annual rainfall than Everett and Seattle. In fact, the precipitation at Greenbank is half that of Seattle. This had much to do with the development of the Greenbank Farm.



Aerial View of Greenbank (1960 ?)

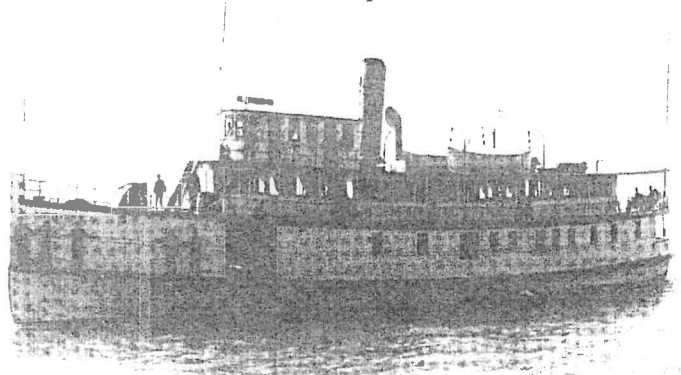
The name "Greenbank" was given to the area by Calvin Philips to honor his family's home and his birthplace back in Greenbank, Delaware.

The Island in 1904

Small farms and logging were the primary sources of income for most early settlers around Greenbank. Logging was the first major industry in the area. Logs were sent by water to Utsalady on Camano Island where a sizable saw mill existed and where special logs were prepared for use as spars and masts for sailing vessels. Soon there were several logging camps on Whidbey and a few small mills sprang up, especially on the south end of the island. It was there that ancient trees 400 to 500 years old grew to a diameter of fifteen feet or more.

The fish trap at Lake Hancock provided work for several men, while hunting and miscellaneous odd jobs provided a living for a few. Logging and the Greenbank Farm employed many men.

The few original residents of Greenbank came from many places, notably Finland and Austria, but other parts of the United States as well, including both New England and California. Some Chinese were used as laborers. The newcomers' vocations were varied and included a blacksmith and several men with carpentry skills. The closest doctor was in Coupeville.



Steam Vessel *Whidby*

It was not unusual in those early days for a man to row across the dangerous, storm swept waters to reach Port Townsend or Everett. From Greenbank it was not very far to Langley or Coupeville by boat. Local Native Americans provided canoe service to other towns as well. Roads were almost non-existent until the 1920s. Around 1909 a steamer came to the Greenbank dock three times a week. By 1913 commerce had increased sufficiently to warrant a boat that made daily trips.

As the Greenbank area became more productive, and with the construction of the wharf on the south end of the Greenbank beach, boats arrived more frequently and produce was shipped to all points on the Sound. Passengers also arrived, staying at the two-story hotel built by Mr. Philips on the shore or in a few cabins built there. When the automobile finally made its appearance and crude horse tracks became something resembling roads, the community

grew larger. More farm land was cleared from the forest and comfortable homesteads were built.



Greenbank Beach - 1908

The first Greenbank store and its small post office were located in the hotel until a nearby building was constructed, adjacent to the wharf and the hotel. The store was managed by Jacob Pussey, a relative of Cal Philips and was probably an important gathering place where local people could hear all the news and gossip with their neighbors. Visitors who stayed in cabins along the beach could purchase supplies in the store and the residents could obtain items ordered from Seattle or elsewhere.

The Greenbank Farm

Calvin Philips was not a farmer. He was an insurance salesman and land developer. Cal started the Greenbank Farm to help boost land sales which faltered during the depression in the 1890s. Cal knew that his partners back east would be anxious to see some profit from their investment in excess railroad lands. He built the farm as a model dairy farm which rivaled in size and scope the famous Carnation Farm (now owned by Nestle) east of Redmond, Washington.

In 1914 the farm reportedly had seventy-five cows, mostly registered, pure bred Holstein-Friesians, some of which had record production of milk and butter. Also on the farm were eighty swine, mostly of the Tamworth or Durol-Jersey breeds, and twenty-five horses and colts.



The Greenbank Dairy Herd (c.1918)

The farm had grown to about 150 acres of land, some of which was cleared by Chinese laborers and oxen. Philips had constructed numerous buildings including several said to be the so-called Sears "kit houses." Philips employed twenty to fifty men,

most of whom were employed to clear the remaining acreage. Vegetable crops were raised as well as feed crops for the animals.

The barns were said to have been completed in 1906. One observer claimed the farm had the largest barn he had ever seen west of the Mississippi. The barns had a storage capacity of six hundred tons of feed and the silo held two hundred and thirty-five tons. The milking barn could accommodate sixty cows at a time and utilized mechanical milking machines. The farm was equipped with a thirty horsepower tractor used for all sorts of tasks, including stump pulling. There was even a blacksmith's shop manned by Mr. Jim Jackson in one of the barns.

The farm was managed by an experienced Midwest dairyman named Guy M. Richards whose goal was to create a model farm. He certainly was unaware that the Greenbank Farm would eventually acquire its lasting reputation for its Loganberries and for the wine made from the berries.

Doris Philips, Cal's daughter-in-law, related in an interview that Cal brought a bull over from the Port Angeles area and they found the bull had tuberculosis. The entire herd became infected and was either destroyed or moved off the island to Western State Hospital at Steilacoom where a breeding program eradicated the disease in the next generation of animals. Later, after the ground and buildings had been decontaminated, some more cows were brought in but only for the use of the people who worked on the farm. Cal's sons, Jim and John, both managed the farm for a while after the dairy herd was removed and Mr. Richards left. They installed electricity and made other improvements. Meanwhile, Cal Philips made only rare appearances at the farm, living at the Rainier Club in Seattle until his death in 1963.

Jim Scougle was the caretaker of the farm for a while and then leased it from 1934 until 1939 according to his son, Ray Scougle.

John Molz, purchased the farm next. As an experiment, Mr. Molz planted Loganberries and found that they thrived.

Loganberries are a mutant hybrid of blackberries and raspberries first found in Oregon. The Greenbank Farm began to produce Cascade Blackberries, Perfection Red Currants, some grapes, and Loganberries. It was managed in 1946 by Mr. John Sinema. The Molz family shipped the berries to the American Wine Co. winery in Seattle where Pomerelle wines were produced. Excess berries went to the Sunny Jim Company in Seattle where they were used in jams and preserves.

In 1950, the Greenbank Farm was reported to be the largest Loganberry farm in the USA. By 1961 the Greenbank Farm was reportedly the biggest Loganberry farm in the world with 78 acres of Loganberries producing 130 tons of berries annually. Sixty pickers picked 580 barrels (55 gallons each) in twenty days. There were also several acres of blackberries and currants.

By 1970 the Everett Herald reported 125 acres were planted in Loganberry bushes and 80 to 100 pickers were required to make six sweeps through the fields to gather the berries. A total of 150 to 160 tons were produced that year. Most of the picking was done by women and girls since boys were considered "too disruptive." John Sinema retired in 1970 and his position was filled by Mr. Mun Kawasaki, assisted by his wife, Caroline.

As the public's tastes changed and grape wines grew in popularity, Mr. Molz imported European grape varieties, planting them in Eastern Washington where they did well. These produced the premium wines sold under the name of Ste. Michelle, the name suggested by his daughter, Mary Jo Molz Stansbury. In 1971 Mr. Molz sold his wine company, American Wine Growers, and the Greenbank Farm to Seattle investors and it was later acquired by U. S. Tobačco. Loganberry production declined.

In 1987 the South Whidbey Record reported that Chateau Ste. Michelle opened their tasting room at the Greenbank Farm where the popular Whidbey Liqueur was produced. Mr. Gary Ando became the manager of the farm from 1987 to 1997.

Ste. Michelle's 1995 business decision to sell the Greenbank Farm to developers immediately galvanized the anxious residents of Greenbank. Their grassroots action and the involvement of their government representatives resulted in the purchase of the farm for the community. The Greenbank Community Council, chaired by Kristi O'Donnell and the Friends of Whidbey Island, whose president was Tom Clendenin, joined forces to create the Greenbank Farm Task Force, instrumental in the acquisition of the farm. In 1997 the Trust for Public Lands negotiated the sale of the farm for \$2.8 million, including 322 acres of forest to Island County and 51 acres on the west side of SR525 to the Nature Conservancy. About 151 acres of open farm land and buildings was purchased by the Port of Coupeville. The Port contracts with The Greenbank Farm Management Group to manage and develop the property consistent with the community's historic preservation mission and the Port's economic development mission.

The Greenbank Store

The first store building at Greenbank was built by Cal Philips as noted earlier. The store was located on the Greenbank Beach (at the end of Wonn Road, near the wharf). The store served the growing populace and the visitors to the beach. The first store manager and post master was Jacob Pussey. In 1915 the store was operated by Mr. Alex Engstrom who also served as postmaster. Mr. Engstrom also owned one of the first two automobiles (Model T Fords) in Greenbank. The store was purchased again in the early twenties by Mr. Percy Godfrey. The store was sold in 1926 to Charlie Gartner. In 1932, Mr. Gartner moved the store from beside the wharf to a location up the hill to the south on the new but unpaved road that served as the primary road and is now known as the Firehouse Road. While it was the main road in those days, it was described as a "muddy trench" caused by the wagons that used

it. Later, Mr. Gartner built a new store, facing the new highway (SR525) and the old store was moved to a position on the south side of the new building where it was used for storage. The old building may be seen in a photograph in the Greenbank Store today. It stood where the post office now stands.

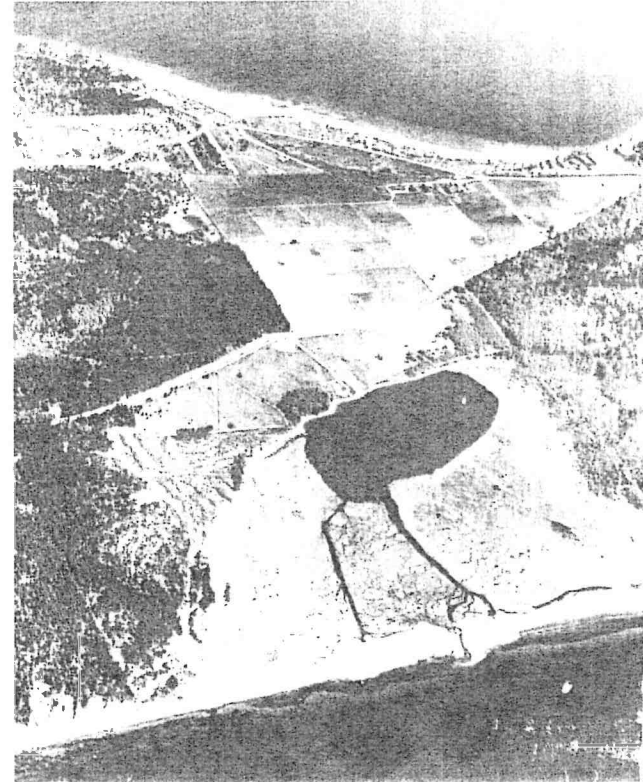
Dean Bratsburg's father, Mr. Jim Jackson, who arrived in 1913 and had been the blacksmith at the Greenbank Farm, purchased the store next and it was operated from 1944 to 1964 by Art and Dean Bratsburg. They lived in their brick bungalow on Firehouse road, adjacent to the store. Tom Coupe (great-grandson of Captain Thomas Coupe) and his wife Mary assumed ownership in 1964 and still run the store today with help from their children and grandchildren.



The Greenbank Store

Other Landmarks

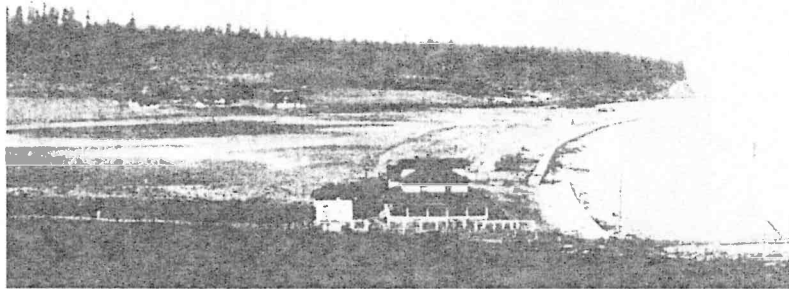
The Greenbank Farm and Lake Hancock are at the central "neck" of Whidbey Island. The "saddle" in the upper fields of the farm is one of the few places that allow visitors to see both sides of Whidbey simultaneously as well as both mountain ranges.



Lake Hancock (1960 ?)

Lake Hancock was part of Cal Philip's holdings and was first used as a fish trap. In 1916 saltwater broke through the edge of the lake and it became affected by the tidal action. Cal Philips leased 372 acres including Lake Hancock to the U. S. Navy and

eventually, after some litigation with Mr. Philips, the Navy took permanent possession of Lake Hancock. In 1943 the Navy set up a target range on the lake and during World War II, it was used as a firing range. Low flying aircraft, firing rockets and dropping bombs, were often seen until the nineteen-sixties making passes across the target rafts anchored in the lake. The ordnance was not live except for a shotgun charge that aided in determining hits and misses. It has been said that occasionally a bomb would land in the farm's berry fields, but no injuries or damage was reported. In 1972 the Navy removed 12 tons of ordnance from the lake. In 1998, the Lake Hancock area was declared a 52 acre preserve. Although it has changed considerably from its original state, it is noted by experts for its "high quality" native ecosystem.



The Greenbank Hotel

At the end of Wonn Road one can still see many of the pilings that supported the sturdy wharf that Cal Philips built nearly a hundred years ago. Now only a series of rotting posts remain.

The two story hotel that Cal Philips built on the beach near the wharf was managed by the Pratts and then by the Engstroms. Later the Engstroms bought the old hotel for \$200 and used it to build their home in 1946.

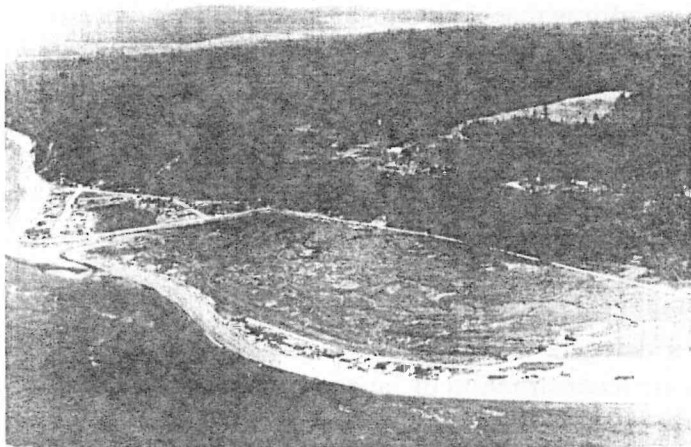
A Greenbank school existed as early as 1901, but the first official school opened in the fall of 1912 with Virginia Richards as its teacher. School was held in one of the small houses on the farm. That building was destroyed by fire, so a new school was built on the property where the Greenbank Community Club House now stands. It was established during the winter of 1912-1913 with an enrollment of less than a dozen students taught by Helen Riddle. In 1914 there were about twenty students with an increasing enrollment. Photos of the school house show a frame building with many windows and a front porch. It appears to be about 24 by 38 feet with a shingled hip roof. A small school at Classic joined the Greenbank School when Alex Engstrom became director of schools. Pearl Wannamaker became the principal from 1919 to 1921. In the 1940s Pearl was the State Superintendent of Public Instruction. She was also in the State House and Senate. Pearl was part of a delegation invited by General MacArthur to advise his staff on the reconstruction of Japanese schools after World War II.



Pearl Wannamaker and MacArthur's Committee

The small Greenbank School District consolidated with Coupeville in 1933 or 1934 and the Greenbank School sat empty until 1941 when it was sold to Emmett Tinius who salvaged the lumber for his family's home.

Calvin Phillips sold 206 acres at Lagoon Point to the U.S. government in 1909 for a reported \$9000. The Army may have planned to use the property as another army post but they sold it and today it is a sizable development of homes.



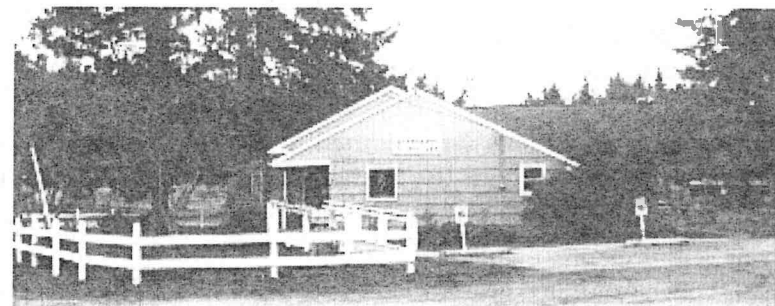
Lagoon Point

The current location of Loganberry Realty was at one time a boat repair shop operated by "Chips" Carrey. The "Highway Hair Cutter" shop was previously a granite and marble shop, a pizzeria, a fish barbecue, a Russian tea shop and a self-service laundry.

One of Greenbank's popular byways is another landmark: Meerkerk Rhododendron Gardens. Visitors to Meerkerk will find many different "rhodies" and other botanical marvels as they stroll through the acres of well kept gardens. At one time the gardens were part of the private residence of the Meerkerks. Now many residents volunteer to maintain the gardens, working under the direction of Kristie O'Donnell.

Greenbank Community Clubs

The first community club house was built in 1920 by local residents at the junction of Christensen Road and SR525. It was about 1600 square feet and the site of many dances and gatherings. A Greenbank Orchestra was formed by Mr. Muir in the twenties with thirty capable musicians. They played for the dances held in the hall and at Coupeville also. That building is gone now, but it was replaced by the current Greenbank Clubhouse Operated by the Progressive Club. It has been said that the original Greenbank Progressive Club was related at first to a political movement of the time. We do know that it was established and held its first meeting on June 12th, 1920 in an old bunkhouse at the Greenbank Farm. Their original constitution stated that their objective was the establishment and maintenance of a social club for the people of Greenbank. The dues were \$5 per year and remain so to this day! In 1998, the By-laws were revised to state that the club's purpose was "to serve the community of Greenbank in whatever ways are deemed appropriate and to promote the social activities of the people of Greenbank."



The Greenbank Community Clubhouse

The club house was constructed with cooperation from the Garden Club, the Sewing Club, the Boy Scouts, and many local

residents. It was started in 1949 on the old school house property and completed in 1950 using volunteer labor at a total cost of \$3500, thanks to generous donations by local businesses and individuals and to fund raisers.

The Greenbank Garden Club started in 1948 and their first president was Anna Engstrom. The Garden Club is still going strong with approximately 65 members, some of whom are Master Gardeners. Garden Club members create and maintain landscaping around the clubhouse, at the entrance to the Greenbank Farm, and the "Secret Garden" at Meerkerk.

Many other groups have used the club house including art classes taught by Eleanor Frank (painting) and Adeline Allerdice (ceramics and floral arrangements). A painting group and a quilting group continue to meet at the club house. The Greenbank Community Clubhouse also provides a meeting place for quilters, painters, voters, the senior lunch program, various organization meetings, private parties, the Greenbank Garden Club, and of course, the Progressive Club.

Making History Today

Residents of today's small town of Greenbank enjoy the rural ambiance, the quiet, sunny beaches and woodlands. With the grocery store, post office, a winery, lodging facilities, realty office, accountants, barber, and gas pumps the town is nearly self sufficient. On the main highway between Freeland and Coupeville, Greenbank is not far from restaurants, stores, shops, Whidbey General Hospital, and the Island County offices. Greenbank has experienced moderate growth and continues to look toward a prosperous future.

The people of Greenbank are involved in many community activities and we are fortunate to have many artists, craftsmen, musicians, and writers among our residents. Young people and retirees add greatly to the diversity of our town.

The Greenbank Farm is engaged in a long term plan to meet their mission statement: "... to become a marketplace for local products, an event venue, a passive recreational site, and a resource for local entrepreneurs to establish congruent agriculture and commercial businesses at the farm." The non-profit Greenbank Farm Management Group has been increasingly successful at meeting this goal with the restored buildings, Whidbey Pies Café, wine sales, alpaca husbandry, beet fields and loganberries. They have also brought many events to the Island and provided a venue for a variety of events, both public and private. Eighty acres remain available for agricultural use. The Whidbey Island Master Gardeners' organization have chosen The Greenbank Farm for their educational garden. They recently restored and added improvements to one small building where they will teach and provide demonstrations.

Events such as weddings, seasonal parties and sales, and the popular Loganberry Festival are held on the farm grounds. The Highland Games and the Whidbey Hospital Foundation's Tour de Whidbey have also made use of the spacious grounds. The Greenbank Farm is a marketplace for local craftsmen and produce growers. In the summer, the Sunday Market is held each week and the Holiday Market is held before Christmas.

Additional commercial space will soon be available for new enterprises. Areas will permit craft persons and artists to create and display their work.

Many Greenbank residents enjoy walking their dogs through the farm's upper fields and watching the sun rise or set across the waters that frame the Greenbank Farm. The wetlands provide habitat for many creatures, including the Great Blue Heron and red-winged blackbirds.

You'll find the people of Greenbank friendly and helpful. They enjoy discussing the events of the past but are looking to the future as well.

Sources

Some of the sources used in preparing this booklet were from articles and transcriptions of interviews or discussions with: Gary Ando, Anita Berger, Tom and Mary Coupe, Sally Jacobson, Caroline Kawasaki, Betty Rheberg, and Mary Jo Stansbury

Bibliography...

Sails, Steamships & Sea Captains
Island County Historical Museum

Bow to Plow
Island County Historical Society – 1992

A Particular Friend, Penn's Cove
J. Cook - Island County Historical Society – 1973

A History of Whidbey Island –
George Kellogg - Island County Historical Society - 1934

By Canoe and Sailing Ship They Came
Spindrift Publishing Co. – 1989

Vancouver's Discovery of Puget Sound
Edmond S. Meany – Binford and Mort Publishers - 1957

The Railroaders
Time-Life Books – 1973

American Heritage History of Railroads in America
Oliver Jensen – Bonanza Books - 1975

Sales Brochure - (1914 ?)
Calvin Philips and Company

Other Documents:

The Everett Daily Herald
The Whidbey News-Times
The South Whidbey Record
The Westerner, November, 1913



Greenbank Farm Blacksmith Jim Jackson

Dedication

To the residents of and visitors to
Greenbank, Washington 98253
Past, Present and Future.