

Patron-Boxholder  
Rural Route--Post Office  
Star Route--Local

U. S. Postage  
Paid

PERMIT NO. 20  
OAK HARBOR

# The Whidbey Islander

VOL. 1 No. 2

THURSDAY, FEB. 26, 1959

PRICE 10 ¢

SERVING ALL OF WHIDBEY ISLAND

## Success Secret Told

Wise budgeting of her time, and a cooperative husband were listed as the secrets of her success by Mrs. Wilbur (Grace) Sherman, of Coupeville, who was named as this year's Woman of Achievement by the Oak Harbor Business and Professional Women's Club.

The annual Women of Achievement Dinner was held last Friday evening in the IOOF hall, with 105 women attending. From a list of eight nominees for the title, the award went to Mrs. Sherman who had been nominated by the Women's Missionary Society of the Coupeville Methodist Church. Judges were Tom Moore, Clarence Wright, Rev. Iwerks, and Donald Goodwin.

The wife of an Ebey's prairie farmer, and the mother of three daughters, Mrs. Sherman finds her day pretty well taken up with the job of homemaker. But she still manages to devote several hours of every day to her outside activities. These include in particular youth and church work. She is a member of PEO, lecturer of the Ebey Grange, an active member of the Women's Society of Christian Service, youth secretary of the First Methodist Church, member of the Historical Society, of the Homemakers Club of the County Agent office and has long been active in 4-H work.

"I'm not one to join to just be a member," Mrs. Sherman explained. "I like to be active. It means that I have to budget by time carefully. I don't have any trouble. I have to be a little sterner with the children, but youngsters want some discipline."

Her "cooperative husband" Wilbur farms 106 acres of squash and other crops, on the west side of Whidbey Island on Ebey's prairie, offers needed encouragement, and complains hardly at all at his wife's busy schedule.

Mrs. Sherman was born in Wisconsin, came to Whidbey Island in September 1930 and is a former Coupeville school teacher. The Shermans have three daughters, Susan in Seattle, Sara, a freshman at Oak Harbor high school, and Cheryl in the 7th grade at Coupeville. With her daughters, she has been active in 4-H work. She has received her 10 year pin in 4-H and has been adviser for the Stir and Stitches 4-H group. One of her former 4-H club members, Betty Jo Schriber will leave for India this summer under the IFYE program. Mrs. Sherman has also been county officer in charge of the 4-H program.

Guest speaker of the Woman of Achievement Dinner was Lulu M. Fairbanks, Seattle newspaper woman, who spoke on women in Alaska, and growth of Alaska. Chairman of the dinner was Helen Glines. Assisting her on committees were Virginia Stevenson, Judy Dunn, Frances Alexander, and Dorothy Boyer.



FOREST GIANT FELLED--Bus Krieg, left, and Bill Lam stand beside a giant Douglas Fir Tree, which was felled at Longpoint last week. The giant tree estimated to be more than 350 years old, was one

of the few remaining forest giants. The tree had to be removed after it was feared it might fall on a nearby home. See story and other pictures in section two. Whidbey Islander Photo



# ISLANDER EDITORIALS..

## On Planning

Island County has an important stake in a bill now pending in the State Legislature. It concerns the authority of county planning commissions to conduct the orderly development of the areas outside of incorporated communities. City Planning authority has already been well established and tested in the courts. However, the counties haven't had this clear cut authority to make the same decisions. Island County already has a planning commission and a pending county planning code. If and when the Legislature completes action on the bill and it is signed by the governor, the way will be clear for the commission. Few doubt the need for county planning. Island County in the next few years will experience considerable changes. More homes, in addition to military housing, will be constructed. New businesses will be established. It would be criminal if through hodge podge development, this beautiful island were allowed to be defaced. The wealth of Island County lies in its beauty. It will take wise heads making wise decisions to protect what we have. We urge our state legislators to complete action on the bill so that it will become law.

## 'Always Ready'

Hats off to the two Coastguardsmen who swam 600 feet through icy Puget Sound waters to rescue two men from a capsized small boat off of West Point in Seattle last week. The action of Coastguardsmen Donald Werth and William Bowen was in keeping with the high traditions of their service. The Coast Guard is responsible for the saving of many lives by vigilant patrol of the Sound. With thousands of boats using the Sound during the summer, the job of the Coast Guard is complex. Even though the two heroes could not get the motor of the rescue boat started, they were not stopped. Their action demonstrates that the Coast Guard is "Always Ready."

## Adult Delinquency

There's a lot of talk these days about juvenile delinquency, but hardly a mention of adult delinquency. Take driving, for instance. Hardly a second goes by on our highways without some serious breach of the law by an adult. This past week we have seen gas trucks, a large passenger bus and private cars driven by adults doing 70 miles per hour in a 50 mile zone. By comparison, the juvenile offenders were in the minority. It's time adults took notice of their own delinquency along with their concern for the juveniles. After all the kids had to learn how to do the wrong things from someone. Abolish adult delinquency and juvenile delinquency will wane.

## 'Collapse Day'

Note to the Washington State Legislature: "Michigan State has temporarily staved off collapse day by having industry pay taxes in advance. \$35,500,000 has been voluntarily paid by various industries after an appeal by Governor G. Mennen Williams." The present session of the Washington State Legislature might do well to watch what is happening in Michigan. Unless expenses are kept in line with income, this state might also face "collapse day." There might not be enough industry around ready and willing to pay taxes in advance. As our old pappy said, "Credit's fine, son, but don't spend more than you've got coming in."

**Bible Comment:**

### How Jesus' Realm Differs From a Worldly Kingdom

It was of little children that Jesus said, "Of such is the kingdom of Heaven." He also said "Blessed are the poor in spirit for theirs is the kingdom of Heaven."

It is good to think on the meaning of His kingdom during this Lenten season.

It is the child-like whose characters can be formed by God. Those whose very poverty of spirit makes possible their enrichment by being filled with the Spirit of God are fit subjects of Christ's kingdom.

Jesus said that His Kingdom was here and now. It is within you, or "in your midst," in whichever way we may translate His words.

The principles of the kingdom that Jesus proclaims are love and service; not getting but giving. "It is more blessed to give, than to receive."

## Growing Out of 'Em



## WEEKLY CROSSWORD PUZZLE

### Pretty Posy

**HORIZONTAL**

- 1 Depicted flower
- 8 Varieties in gardens rose from two Argentina species
- 13 Whitesmiths
- 14 Lamprey-catcher
- 15 Craft
- 16 Lassoer
- 18 Female sheep
- 19 Pronoun
- 20 Acquiesce
- 22 Compass point
- 23 Negative reply
- 24 Sun god
- 26 Soon
- 28 Scope
- 31 Comely
- 32 Small bottle
- 33 Identical
- 34 Essential being
- 35 Ages
- 36 Dregs
- 37 Lieutenant (ab.)
- 38 Half-em
- 39 Parent
- 41 Began
- 47 — is a common flower in gardens
- 49 Entire
- 51 Step
- 52 Flyer
- 53 Lariat
- 55 Many — and double varieties are cultivated
- 57 Guide
- 58 Pesterers

**VERTICAL**

- 1 Chief god of Memphis
- 2 "Emerald Isle"
- 3 Powerful explosive
- 4 United Nations (ab.)
- 5 Roman emperor
- 6 Press
- 7 Snakes
- 8 Flowerless plant
- 9 Whirlwind
- 10 Rubber tree
- 11 Tidings
- 12 Sketched
- 17 Eye (Scot.)
- 20 Disputes
- 21 Toured
- 23 Regular
- 25 Ascended
- 26 Church part
- 27 Approach
- 29 Facility
- 30 Brews made of malt
- 39 Roman war god
- 40 Dismounted
- 42 Former Russian ruler
- 43 Near
- 44 Float of logs
- 45 Weary
- 46 Silkworm
- 47 Froster
- 48 Scatters
- 50 New Guinea port
- 52 Era
- 54 Symbol for tellurium
- 56 Nova Scotia (ab.)

Here's the Answer

# The Whidbey Islander

Published Every Thursday At Oak Harbor, Washington--Serving All Whidbey Island

Editor & Publisher ..... Dal. B. Farias  
Managing Editor ..... Ken Monson  
Advertising ..... Gordon Brand  
Office ..... Rhoda J. Irvin

Advertising Rates On Request.....  
Subscriptions \$1 Per Year In Island County  
Office in Oak Harbor..... Phone OR 5-4666  
Mailing Address..... P. O. Box 488

## ISLAND COUNTY HISTORICAL SOCIETY

Island County's infant Historical Society has come to the end of its first year showing sturdy growth and a healthy interest and enthusiasm for the future. The following slate of officers were installed for 1959. President-- Mrs. Cecil Perkins, 1st Vice President -- Mrs. Clark Sherman, 2nd Vice President -- Mr. Harry Race, 3rd Vice President -- Mrs. Carl Johnson, Secretary -- Mrs. Pat Wanamaker, Treasurer -- Mr. W. R. Thompkins. The Trustees elected were John Vanderzicht, Oak Harbor; Mrs. Mel Neil, Oak Harbor; Cecil Perkins, San de Fuca; Mrs. William Peterson, Clinton; and Herman Wanamaker, Coupeville. One vacancy on the Board of Trustees still remains to be filled as Miss Edith Magnuson of Greenbank will be unable to serve. An announcement was made at the January meeting to the effect that a fine old pioneer home may be given to the Historical Society as a Memorial Museum in which to depict the pioneer way of life.

The donor does not wish to be identified at this time and stipulates that the Society must prove its ability to support such a Museum before a deed can be given. This is an inspiring and wonderful goal for which to work and we urge each and every resident of the County to join in helping make this acquisition of property possible. Such a Museum, with authentic furnishings, could be a source of pride and pleasure to all of us who live here and a spot of keen interest to tourists and visitors. Most of our children do not even recognize many of the implements used daily by our grandparents as a necessary part of their existence. Let's all work to preserve what remains of the Heritage left us by the gallant pioneers who built our great Northwest. The Historical Society's annual dues are only \$1.00 per person. Do your share, be a member, and show your attractive membership card with pride. Any officer or member of the Society will be glad to accept your dues and see that a membership card is mailed to you promptly.

## Anniversary, reunion combined

COUPEVILLE: The silver wedding anniversary of Mr. and Mrs. Joe Segar in Tacoma recently, was also the occasion for a family reunion of William H. Sherman and his nine sons and daughters. Helping the Segars celebrate their anniversary were Mr. William Sherman, Mr. and Mrs. Clark Sherman and son

Jim, Mr. and Mrs. Wilbur Sherman and daughter Susan, Mrs. and Mr. Edwin Sherman, Mrs. Mary Coates and Sylvia, all of Coupeville; Mrs. Ed Mulvihill, Kevin and Kristie of Snoqualmie Falls; Mr. and Mrs. Gene Sangrey and five children of Seattle; Mr. and Mrs. Raleigh Sherman of Clinton; and Mrs. Rochell Lindberg and Ruth of Tacoma.

### PEGGY

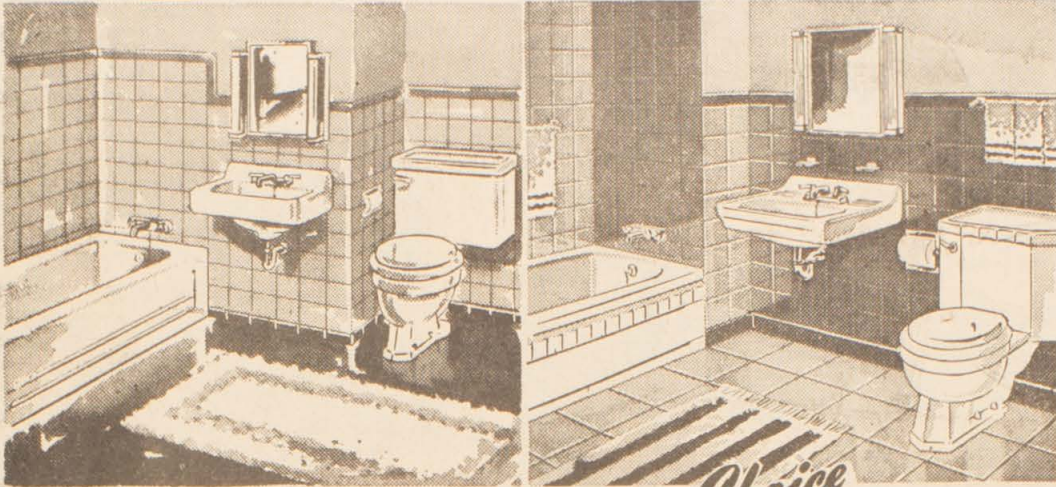
### AMY!



**SEARS**

ROEBUCK AND CO.

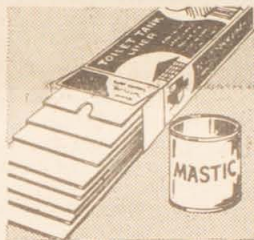
Mount Vernon

**VALUE  
DEMONSTRATION****Sale!**store-wide  
savings  
HUGE  
price cuts  
specials in  
all departments**TAKE YOUR PICK-HOMART**WHITE CAST IRON OR  
COLORED STEEL BATH OUTFITS

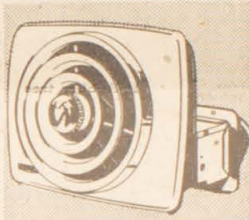
CHOOSE FROM GLEAMING WHITE HOMART CAST IRON BATH OUTFIT OR BEAUTIFUL COLORED HOMART STEEL BATH OUTFIT. YOU GET 5-FT. TUB AND STAIN RESISTANT VITREOUS CHINA TOILET AND LAVATORY. CHOOSE FROM 6 DIFFERENT HARMONY HOUSE COLORS.

*Your Choice***119<sup>88</sup>**ONLY \$5 DOWN ON SEARS  
EASY PAYMENT PLANHOMART  
WHITE OR  
COLORED TOILET  
SEATSNOW  
ONLY **3<sup>88</sup>**

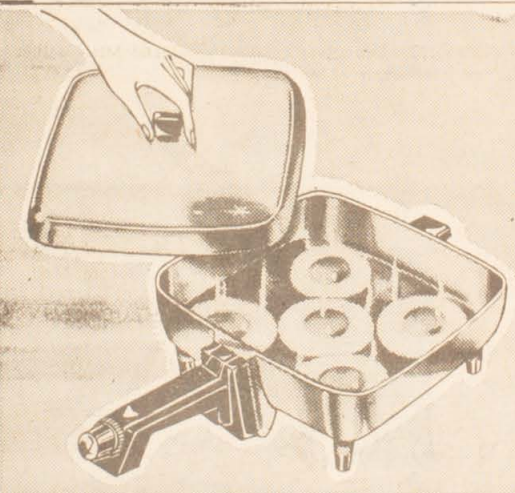
STAINLESS STEEL HINGE STAYS GLEAMING BRIGHT. BUILT-TO-LAST, CRACK & WARP RESISTANT. CHOOSE FROM 4 COLORS.

**Tank Lining Stops  
Toilet Sweating**

Complete Kit... **12.88**  
Converts toilet to modern non-sweat type. Pre-cut Styrofoam®, waterproof mastic, applicator and instructions.

**Homart Ventilator  
for Wall or Ceiling**

9-in. size .... **29.88**  
Modern fan with "air flow" chrome-plated grill. Capacity—550 CFM. 5 year guarantee on rugged motor.

**Kenmore 11½-inch  
electric skillet**

CHARGE IT

**14<sup>95</sup>**

Controlled heat from "simmer" to 420°

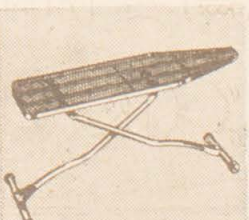
Enjoy the delicious taste of foods cooked to perfection the controlled heat way... in this bright, easy-to-clean aluminum skillet. Plastic handle, 1 yr. immediate replacement guarantee. lightweight aluminum cover. .... **2.95**

*Satisfaction guaranteed  
or your money back***SEARS****Delicious Coffee  
Always with an  
10-cup Kenmore**Automatic **9.88**

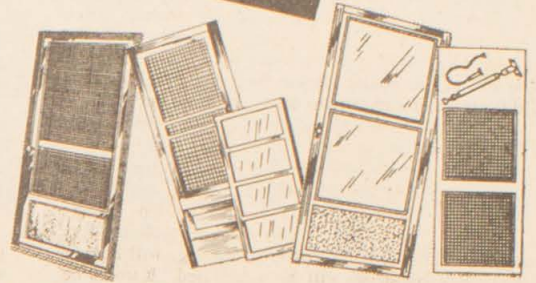
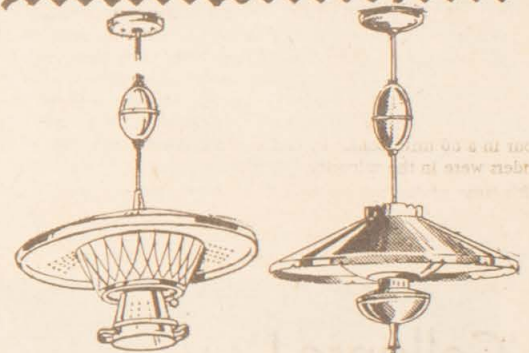
Now... enjoy delicious coffee time after time. This low-priced coffeemaker is high in quality. Dial the flavor selector for desired strength coffee. Gleaming aluminum always stays bright.

**Aluminum Gadgets  
At Sears Savings**Your choice. **22c ea.**

Valued for greater! Choose from pudding pans, canister sets, cup sets, cookie cutter sets and many more!

**54 IN. ADJUSTABLE  
IRONING TABLE**  
ONLY .....**5.99**

Has 4 sturdy tubular steel legs, perforated top. Adjusts to any height up to 35 inches.

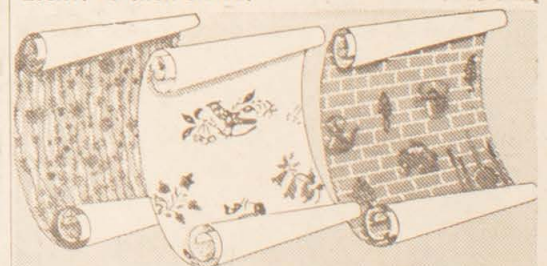
**Save Now-Quality Homart  
Screen and Storm Doors**ALUMINUM  
SCREEN DOOR **19<sup>88</sup>**  
REG. \$23.75 .....COMBINATION  
WOOD STORM DOOR **16<sup>88</sup>**  
REGULAR \$18.95 .....COMBINATION  
ALUMINUM STORM  
DOOR **36<sup>88</sup>**  
-REG. \$42.95ALUMINUM  
16" DOOR GRILL  
**2.66**EASY TO INSTALL. LASTING BRIGHT  
FINISH IS RUST-PROOF. PERFECT  
FOR SCREEN OR STORM DOORS.

QUALITY ELECTRIC FIXTURES

**24.88****19.88**

BEAUTIFUL 4-LIGHT REEL  
FIXTURE WITH SELECTOR  
SWITCH FOR 3 KINDS OF  
LIGHT. 21-INCH SHADE.

EARLY AMERICAN STYLE  
REEL FIXTURE WITH 3  
LIGHTS. 21-INCH SHADE.

**WALLPAPER SALE**BUY ONE ROLL AT REGULAR  
PRICE AND GET 2ND ROLL **FREE**

For a limited time only, select from the finest selection of wallpaper patterns at this special sale price! All are pre-trimmed for easy hanging... all in rich sunfast colors. Double roll.

**STORE HOURS**9.30 A.M. TO 5.30 P.M.  
OPEN FRIDAY NITE TIL 9 P.M.Mount Vernon  
325 South First  
ED 6-3165



# Good Planning Makes Better Fences

Wise is the man who takes time to plan his fencing. The saying "Good fences make good neighbors" still holds true.

Planning avoids some of the pitfalls most "do it yourself" builders make when they go about building a fence around their homes.

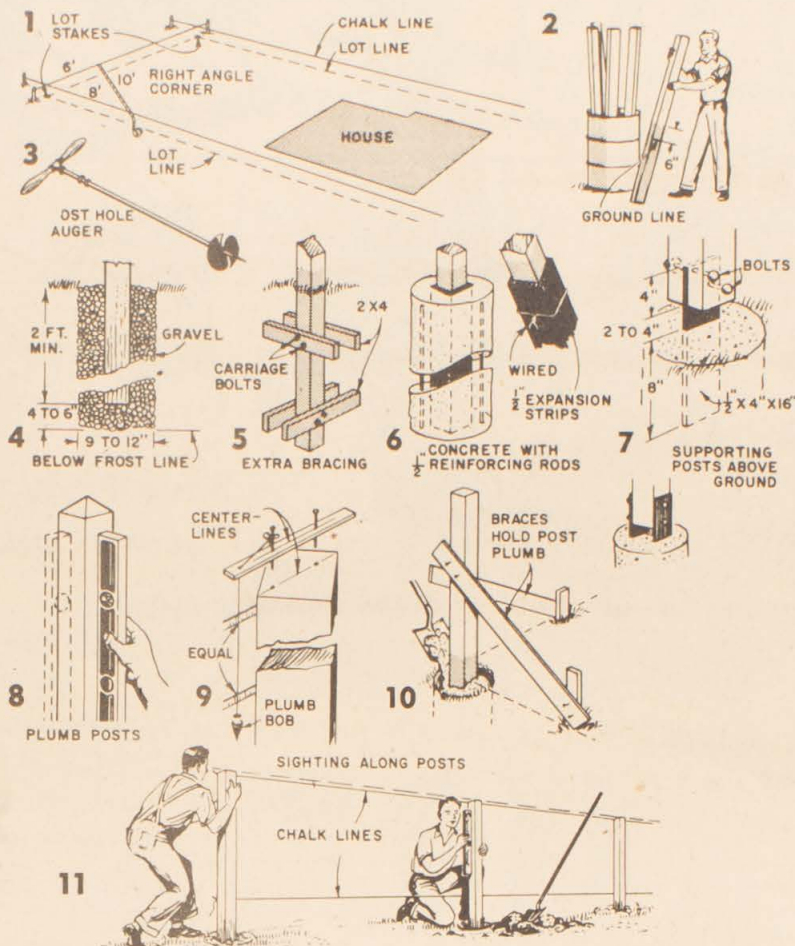
First there are the ordinances regulating fences to consider.

In Oak Harbor, property owners may build a fence no higher than 36 inches and at least 50 per cent open. Fences in the back yard may be no higher than six feet and can be constructed solid for privacy. Side yard regulations depend if the yard faces another house or a street. Best bet is to check your individual plan with the city engineer before the fence is constructed.

Out in the county, beyond the corporate limits of a city regulations are still in doubt. County Engineer George Norris expects that the regulations will be made clearer after the current session of the state legislature.

Lumber yards here on Whidbey have specific information on the various types of fences and what the cost per foot will run. However, here are the rules of thumb: solid or horizontal louvers are most expensive; vertical louvers or board and board about medium priced; and pickets and post and rail the least costly. How you finish the fence and the method you use to set the posts will also be a factor in the total cost of the fence.

The first step in laying out fence lines is to locate the surveyors lot stakes. They are usually pipes driven into the ground at the corners of your lot. Stretch string lines from batter boards directly over lot stakes and build the fence on your side if you are doing all the work yourself or right down the center if your neighbor is sharing the work and expense. To check a 90 degree corner angle, measure exactly 10' between points



6' and 8' from the corner. Soaking lower ends of posts in preservative helps prevent decay. Screw-type earth auger efficiently bores holes in firm, stable earth. On well-drained land, gravel around posts quickly drains water away and aerates posts. However, on low land, water standing around posts may accelerate decay. To support corner or gate posts, bolt on cross-braces below ground or set posts in concrete. Bottom end of post must extend out of concrete to keep water from collecting around post. In northern climates,

wrap asphalt-saturated expansion strips around post to prevent concrete collar from cracking. Best post construction is one or two steel plates in a concrete pier that support posts above ground away from decay forming moisture. Check with a level on two sides of a post or drop a plumb while concrete base sets by nailing temporary braces to post. Align your fence by setting corner posts first. Set intermediate posts from string-line at top or simply by sighting along top edge.

## GOT SOME GOOD IDEAS ?

If you're handy around the house and have some good "how-to-do-it" ideas you'd like to pass along, send them to us, with pictures if you have them.

## Shopping Center To Be Built In Coupeville

A \$60,000, seven-unit shopping center with off-street parking will be constructed in Coupeville by a local corporation in time for use this summer, it was announced this week.

Ralph Ward, Coupeville contractor and developer who will build the center, said work will start as soon as the weather clears off enough to let the ground dry out some.

Ward is a member of the corporation, still in the process of formation, which is going to finance the work.

He said the group has definite commitments from grocery store and meat market operators to move into the center and was negotiating with three possible tenants.

All the plot and mechanical plans for the center have been drawn up by a Seattle fixtures firm, and the building plans are expected to be ready soon. The latter are being drawn by J. E. Skoog, a Seattle architect.

The center will be located south of the Island County Courthouse on Main Street and will sit back about 75 feet from the street.

Ward said the grocery and market were due to open in May, with the other units opening later.

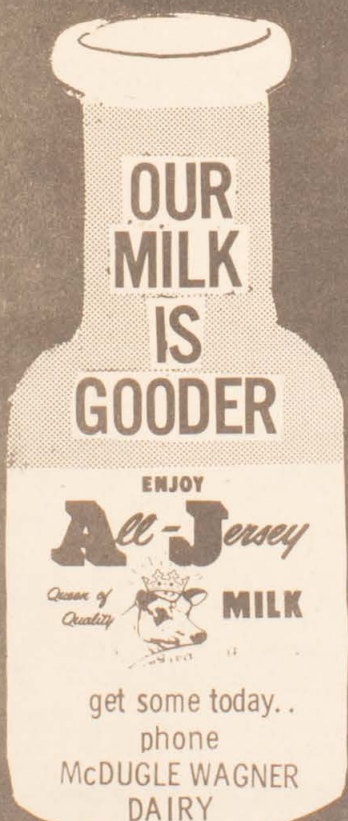
## SLOMER STUDIO WILL BE

## CLOSED

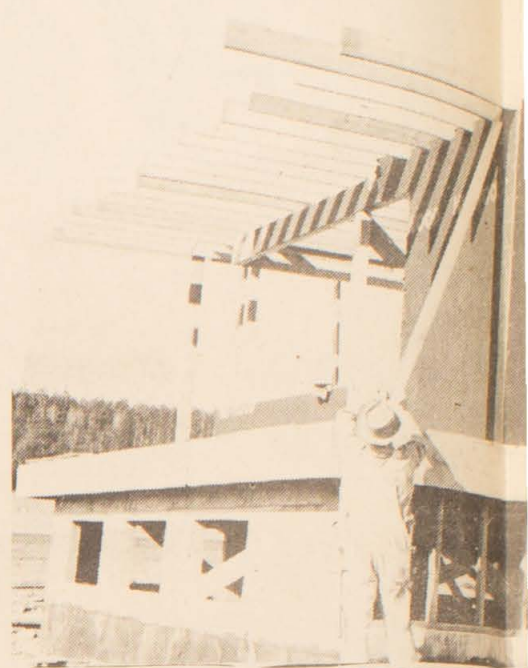
FROM MARCH 1ST TO APRIL 1ST THE SLOMER STUDIO WILL BE OPEN 2ND AND 3RD OF MARCH AND THE 16TH AND 17TH OF MARCH.

## SLOMER STUDIO

PIONEER WAY OAK HARBOR

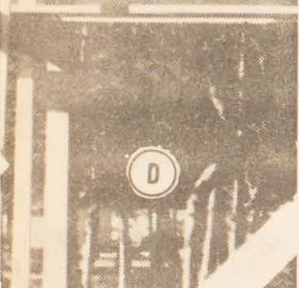
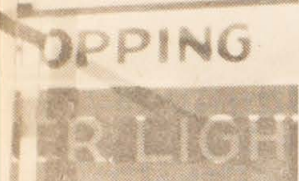
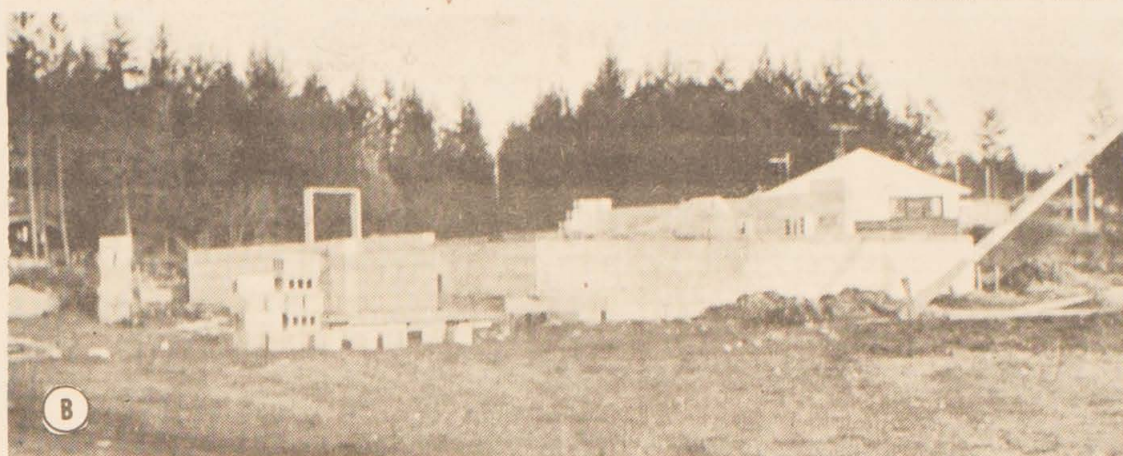
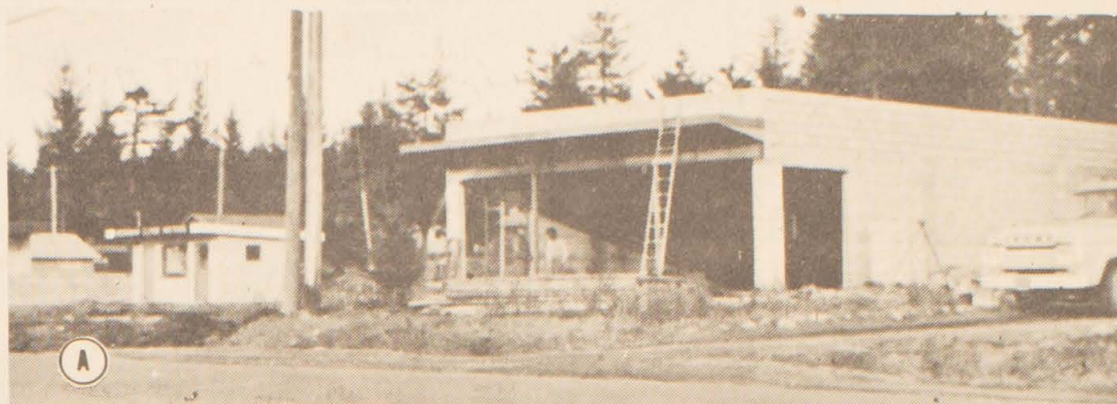
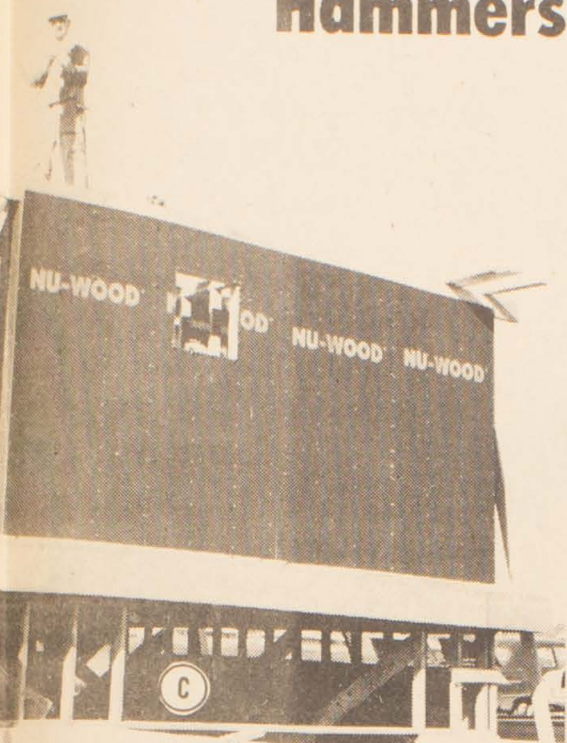


ED 6-3677 UL 6-3302 CY 3-3044





# Hammers Herald Oak Harbor Building Boom



A-Self service Laundry & Norman Clyde Mtrs. Midway Blvd.

B-Drive-in Restaraunt on Midway Blvd.

C-Don Boyer's new lot for used cars Highway 1-D

D-Sign for Payless Mkt. Hiway 1-D

E-Crossroads Real Estate Office, Hiway 1-D

## SEE IT AT THE CARPET CENTER

Hampton Tweed

fascinating fashion in today's carpet marvel...

Imagine carpet that's tufted on two levels to achieve a fascinating high-low weave... carpet with a nubby tweed-richness... carpet with color that's as clear as brook water. Hampton Tweed is all this—and much more. Acrilan makes it a pure miracle on your floor. Step on it, stomp on it—it snaps back like a reed. Soil-resistant, it proves grime does not pay. Even more, it is color-fast, easy to spot clean, moth-proof and non-allergenic. Best news: the price is low.

1195  
SQ.YD.

GULISTAN



WALT HOUGEN'S  
**Carpet Center**

### SHOP-AT-HOME SERVICE

If you can't call in person, phone the store. Without obligation, we will gladly send a trained representative to your home with a complete selection of samples.

1/2 MILE SOUTH OF THE BURLINGTON LIGHT, PL 7-2935

ON OLD HIGHWAY 99



# CLASSIFIED ADS

PAGE 6—THE WHIDBEY ISLANDER—FEB. 26, 1959

Look And Learn

## Misc. For Sale

QUINN GLASS COMPANY  
Aluminum Windows, Mirrors,  
Plate, Window Glass, 1172  
Midway Blvd., Oak Harbor

DELICIOUS HAMBURGERS  
Mom Cook's  
226 Marketown Oak Harbor

The World's Safest  
POWER SAW  
WRIGHT SUPER REBEL  
See It Now At  
North Whidbey Sports  
Center  
Oak Harbor OR 5-3357

## Services

MOTOR REPAIR, gas & elect.  
Call OR 5-3809, Gibson Mow-  
er service. Oak Harbor

CUSTOM CABINET MAKING  
For Home & Commercial,  
KENNEDY'S Cabinet Fixtures  
Oak Harbor OR 5-3336

RADIO & TV REPAIR  
OR 5-2432

2109-200 AVENUE WEST  
FREEZE THE FOOD, not  
yourself, Rent a Room Temp  
Locker today at Clair's  
Meats. North Oak Harbor

MOTORS TUNED, brakes re-  
lined, AL'S ALL CAR GARAGE  
OR 5-2707 Marketown.

CHOICE FREEZER MEATS  
Beef, Pork, Special Cuts,  
Clair's Meats, North Oak  
Harbor.

OAK HARBOR LINOLEUM  
Phone OR 5-9997  
1536 Midway, Oak Harbor

## MODERN ETIQUETTE

Q. Is it a matter of etiquette  
for a new father to give out ci-  
gars and candy to his friends?  
A. This is not required by any  
rules of etiquette. It is just an  
old wide-spread American cus-  
tom.

Q. How do the wordings differ  
in the formal wedding invita-  
tions and the invitations to the  
receptions?

A. Invitations to the church  
"request the honour of your  
presence," while invitations  
to the reception "request the  
pleasure of your company."

Q. Is a "dinner coat" the same  
as a tuxedo?  
A. Yes; in fact, "dinner coat"  
is the preferred term.

Q. Is it proper for a girl's fa-

## Appliances

GUARANTEED VALUE -re-  
conditioned TV and appli-  
ances. Philco Refrig., Apt  
Size Range, Easy Terms,  
Lineburg Electric, Oak Harbor

NEW LAUNDROMAT made by  
Westinghouse, Special \$219.95  
LINEBURG ELECTRIC Oak Harb.

## Boats, Motors

MERCURY OUTBOARDS  
Holeslaw Trailers, Glasspar  
Boats, NORTH WHIDBEY  
SPORTS CENTER,  
Oak Harbor OR 5-3353

All New Fabulous WEATHE-  
RBY MARK V RIFLE, Most  
accurate most powerful in  
the world. CHUCK DANN'S  
SPORTING GOODS. Oak  
Harbor, OR-52122

JOHNSON MOTORS  
Uniflyte Boats, Master Craft  
Trailers. CHUCK DANN'S  
SPORTING GOODS, Oak  
Harbor. OR-5-2122

CASH FOR YOU !!!  
WITH A QUICK  
ACTION WANT AD..

15 Words or Less

50¢ CASH

Mail to P. O.  
Box 488 Oak Harbor

## Automobiles

CAMP TRAILER, for pickup,  
aluminum, all insulated. Sleeps  
3 windows, blinds completely  
equipped, stove, refer. etc.  
Used only 4 times. Original  
cost over \$1100. NOW FOR  
ONLY \$750.00 North Whidbey  
Sport Center Oak Harbor  
OR-5-3353

## GOOD USED TRUCKS

56 1 ton Chev. Pickup, low  
mileage. \$475 Down

46 Intern. 1/2 ton flatbed.  
good traction tires on rear.  
\$50.00 Down

EASY TERMS\* LIBERAL TRADES

DEAN MOTOR CO.  
Orange 8-3722 Coupeville

SPRING HAS SPRUNG  
AT SHEPHERD CHEVROLET

58 Chev. Impala hardtop,  
loaded, 348 hp. eng. P. B. &  
P. S. Turboglide, radio &  
heater, low mileage, w/w  
tires. \$2895.00

56 Chev. Bel Air Conv. clean,  
a real buy. \$1525.

53 Olds 98 Conv. Loaded.  
Hydra. P. S. P. B. elect. win-  
dows, seat radio & heater, w/w  
tires, real clean. \$725

SHEPHERD CHEVROLET  
1138 Pioneer Wy. Oak Harbor.

## New Ads

FOR SALE OR TRADE FOR  
Trailer. Cosy completely fur-  
nished cottage 3 rooms & uti-  
lity. Ph. 492 Langly Wash.

## SPARKS OF WISDOM

Good Breeding  
A man's good breeding is the  
best security against another's  
bad manners.

Contentment  
True contentment depends  
not upon what we have. A tub  
was large enough for Diogen-  
es, but a world was too little  
for Alexander. --Colton

Opportunity  
There sometimes wants on-  
ly a stroke of fortune to dis-  
cover numberless latent good  
or bad qualities, which would  
otherwise have been eternal-  
ly concealed; as words writ-  
ten with a certain liquor ap-  
pear only when applied to the  
fire. --Greville.

Consciousness  
Two men look out through  
the same bars;  
One sees the mud, the one  
the stars. --Frederick Lang-  
bridge.



"WHOA!—HOLD ON THERE! DON'T  
PLAY THAT ACE!"

## ROARING '60'S' PREDICTED

The next ten years will  
bring unprecedented indus-  
trial changes in the United  
States, and the period may go  
down in history as "the Roar-  
ing 60's," a leading industrial  
realtor predicts.

Harold B. Hess, Philadel-  
phia, who recently relinqui-  
shed the presidency of the  
Society of Industrial Realtors,  
made the statement.

"I believe that industry-  
and the industrial real-estate  
field--is going to grow and  
change more profoundly in  
the short span of a decade  
than did all of Western soci-  
ety during the industrial rev-  
olution when factory systems  
and machines first were intro-  
duced," Hess said.

Hess said he based his pre-  
dictions on scientific develop-  
ments and technological im-  
provements.

## Discretion

Open your purse and your  
mouth cautiously; and your  
stock of wealth and reputa-  
tion shall, at least in repute  
be great. --Zimmerman

## Ideas

Common speakers have on-  
ly one set of ideas, and one  
set of words to clothe them in;  
and these are always ready at  
the mouth; so people come  
faster out of a church that is  
at the door. --Swift.

## EARLY FERRY SERVICE STARTS THIS WEEK

Earlier than usual  
Ferry Service to Sidney, B. C.  
opens today from Anacortes,  
according to L. D. Birse, gen-  
eral manager of the Washing-  
ton State Ferries.

The Sidney service, previ-  
ously provided only during  
the tourist season, is opening  
early this year because of the  
discontinuance of wintership  
service between Seattle and  
Victoria, B. C., by the Cana-  
dian Pacific Railways.

The last winter sailing by  
the C. P. R. will leave Seattle  
at 4 o'clock Wednesday after-  
noon. Summer service will  
begin about May 15.

Beginning Thursday, a  
ferry will leave Anacortes at  
9:15 a. m. and arrive at Sid-  
ney at 1 p. m. It will leave  
Sidney at 1:20 and arrive in  
Anacortes at 5 p. m.

Resumption of the Sidney  
service necessitates a change  
in San Juan Island service.

The first ferry will leave  
Friday Harbor at 6:45 a. m.,  
instead of 7 a. m., and will  
depart from Anacortes at 9:15  
a. m., instead of 10 a. m. The  
Sunday schedule also will  
have minor changes.

Birse said the Greyhound  
Line will provide bus service  
from Seattle to Victoria with  
the start of the Anacortes-  
Sidney service.

In Toledo, Ohio, there are  
300 churches and 31 denom-  
inations.

## Hamilton Funds

... a managed investment fund,  
holds over 80 common stocks se-  
lected for income and growth  
possibilities. Choice of lump sum  
or monthly investments. Call for  
free prospectus.

## Hamilton

MANAGEMENT CORPORATION  
DUANE E. KROMER, Assistant District Manager  
7111-725 E. Ave., Oak Harbor OR 5-3854

## TYPEWRITERS



ADD-MATE  
ADDING MACHINES  
\$168.50 Plus Tax

## HERB PERSON

416 GATES STREET MT. VERNON







# VALUE DEMONSTRATION Sale!

store-wide savings  
HUGE price cuts  
specials in all departments



3 DAYS ONLY  
ALLSTATE  
SAFTI-CAPS

Now only

9 88

6.70 x 15  
Tube-Type  
Blackwall  
Each, Plus Tax

AND YOUR OLD TIRE

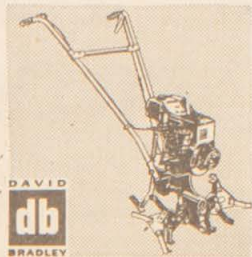
12 Month NATIONWIDE GUARANTEE

TUBE-TYPE BLACKWALLS		
SIZE	PRICE EACH WITH TRADE IN PLUS TAX	DOWN PAYMENT IN PAIRS
6.70x15	9.88	2.00
7.10x15	10.88	2.50
7.60x15	12.88	3.00
TUBE-TYPE WHITEWALL		
6.70x15	10.88	2.50
7.10x15	12.88	3.00
7.60x15	14.88	3.50

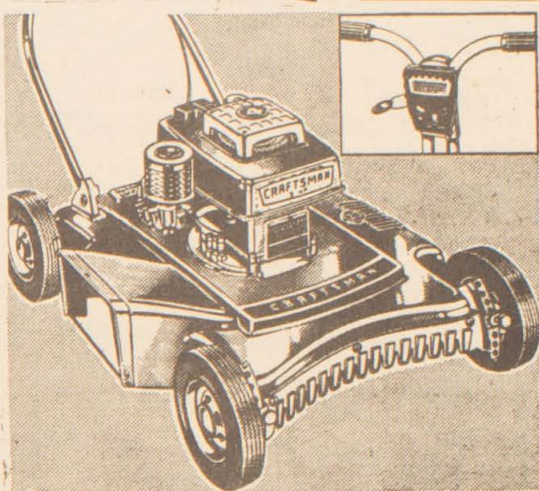
## ALLSTATE BATTERIES FOR EVERY CAR

12-Mo. GUARANTEE  
6-Volt EXCHANGE  
REG. 9.95. . . . .  
24-Mo. GUARANTEE  
6-Volt EXCHANGE  
REG. 14.95. . . . .  
36-Mo. GUARANTEE  
6-Volt EXCHANGE  
REG. 18.95. . . . .

7.95  
10.95  
13.95



David Bradley  
Roto-Spaders  
2.75-HP... 129.88  
4-cycle engine. Power spades and cultivates. Tines cultivate up to 36 in. On-and-off attachments are available.



You'd Expect to pay \$74.95 for this

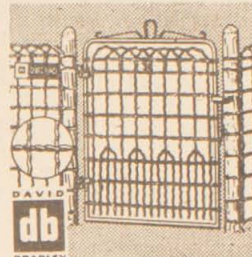
20 Rotary Power Mower

- POWERFUL 2 1/2 HP CRAFTSMAN ENGINE
- ENGINE CONTROLS ON MOWER HANDLE
- LIGHTWEIGHT ALUMINUM HOUSING
- MOWER, ENGINE GUARANTEED 1 YR.

64 88

\$5 Down on Sears Easy Payment Plan

WHEEL ADJUSTMENT ACCESSORY EXTRA



Woven Lawn Fence With Square Gate

100 Ft. .... 27.50

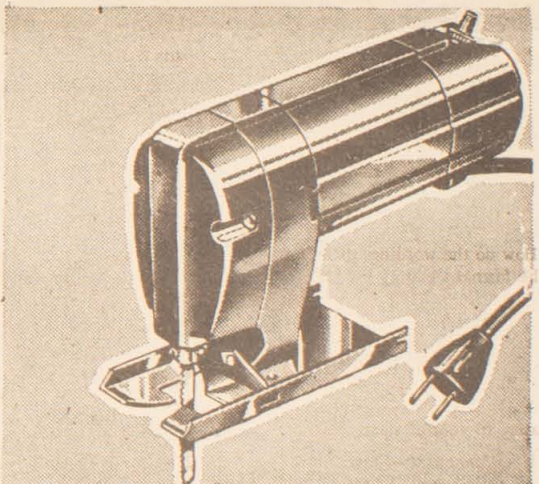
Long wearing galvanized copper bearing steel. Single picket each 3 in. apart. Crimped for strength. Fittings.



Speedy, Direct Drive Chain Saw

16 INCH 149.88

Diaphragm carburetor for all position cutting. Lightweight, easy handling.



Save on Special Craftsman Sabre Saw and Edge Guide

- Similar quality was \$19.95
- Guaranteed for 90 days

16 88



ASS'T TOOLS VALUES TO 2.29

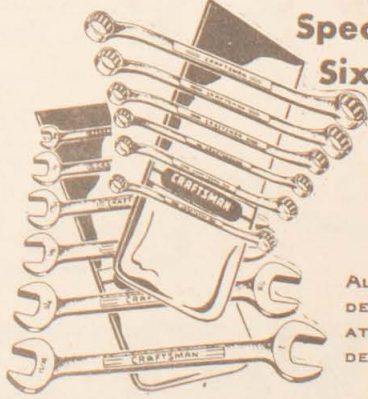
YOUR CHOICE 1.44  
Take your pick. A big assortment of hand tools at one money saving price.

It's eight saws in one—ripsaw, coping saw, band saw, jig, crosscut, scroll, hack or keyhole saw.  
Better quality sabre saw w/edge guide.... 26.88  
Our best sabre saw with edge guide ..... 39.88

Special Low Price on These Six-pc. End Wrench Sets

NOW ONLY

3 77



ALLOY STEEL IS HEATTREATED AND HARDENED. CHROME-PLATED FINISH. ACCURATE HEADS GIVE PERFECT FIT. BALANCED DESIGN.



Powerful ALLSTATE Spark Plugs

Set of 6... 49c ea.

ALLSTATE spark plugs have an extra wide heat range, high electrical resistance. Best for old and new cars.



Smartly Styled Fiber Seat Covers

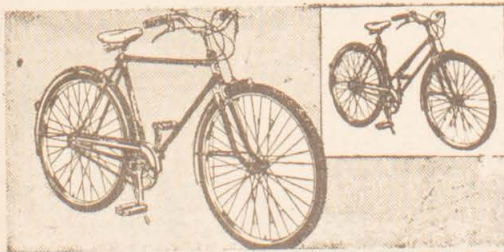
ALLSTATE... 12.88

Attractive and sturdy! Plastic coated fiber is comfortable, easy to clean, long wearing. Expert installation.



HEAVY DUTY OIL IN 6 QT. PACK ALLSTATE... 1.88

Reg. \$2.29 allstate heavy duty motor oil in handy 6 qt. carton. Keep a spare handy for emergencies.



Imported 26-Inch Light Weight Tourist Model

39 88

Weight only 35 pounds! Versatile tubular steel 26-inch bike with 3-speed gear shift—coasting to climbing. Equipped with rear reflector, chain guard, chrome plated trim. Caliber type hand brakes.



J. C. Higgins Pint Vacuum Bottle

NOW ONLY 1.19

Durable, handy in every detail. Non-drip lip, strong recessed glass liner. Case is sturdy steel.

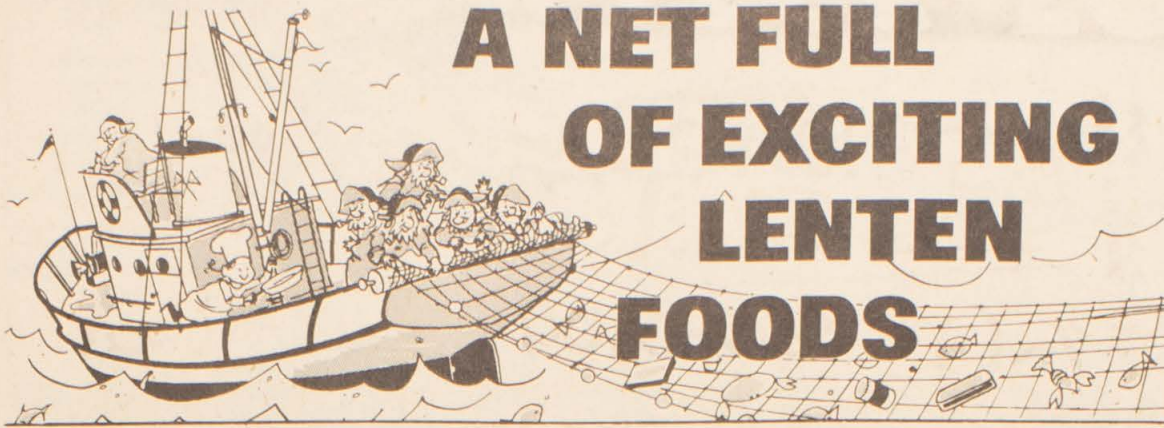
Satisfaction guaranteed or your money back

SEARS

STORE HOURS

9.30 A.M. TO 5.30 P.M.  
OPEN FRIDAY NITE TIL 9 P.M.





# A NET FULL OF EXCITING LENTEN FOODS

For different, inexpensive meals—the accent is on seafoods, baked goods, and dried foods... See our selection of canned meatless products... Add zest to Lenten meals with mild and tangy cheeses.

**NALEY'S** 24oz.  
**PICKLES**  
**3 1/4**  
PLAIN OR KOSHER

**CEDARGREEN**  
**FROZEN**  
**ORANGE JUICE**  
6 OZ TIN  
**5 1/4**

**KRAFT** 2 lb LOAF  
**VELVEETA** 79c

**SNOWDRIFT** - 3# TIN  
**SHORT'NING** 69c

**M.J.B. INSTANT**  
**COFFEE** 6oz. 98c

**PILLSBURY** - 10lb BAG  
**FLOUR** 99c

**WHITE STAR**  
**TUNA** # 1/2 FLAT 29c

**PILLSBURY**  
**CAKE MIX** 3/85c  
WHITE, YELLOW, DEVIL'S FOOD  
SPICE, ORANGE, CARAMEL

**PRODUCE**  
Always Fresh at Payless  
GREEN ONIONS AND RADISHES BU. 5c  
FANCY DELICIOUS APPLES 23lb BOX 98c  
CALIF. FRESH GREEN PEAS lb. 2/29c  
CALIF. FRESH ASPARAGUS lb. 29c

**MEATS**  
EASTERN LOIN PORK ROAST lb 45c  
CENTER CUT PORK CHOPS lb. 69c  
ARMOUR'S CRESCENT SLICED BACON lb 39c

ENTER  
"LASSIE" PUPPY NAMING  
CONTEST  
6  
FIRST  
PRIZES  
  
**WIN**  
**\$2,000.00**  
AND A  
"LASSIE"  
PUPPY  
625 OTHER BIG PRIZES  
Get your entry blank today  
Details on special labels of  
 **FRANCO-AMERICAN Spaghetti 20 oz. TIN 19c**  
 **FRANCO-AMERICAN Macaroni 15 oz. tin 19c**  
**FRANCO AMERICAN 10 oz. SPAGHETTI SAUCE 2/39c**  
**SPAGHETTI & MEAT BALLS 2/49c 15 oz. Tin**

**Campbell's**  
Hearty  
Meatless Soups  
for Quick  
Lenten Meals  
 **CREAM OF ASPARAGUS 7/\$1**  
 **CREAM OF CELERY 7/\$1**  
 **GREEN PEA 7/\$1**  
 **VEGETARIAN VEGETABLE 7/\$1**  
 **CLAM CHOWDER 6/\$1**  
 **CREAM OF MUSHROOM 6/\$1**

**OREGON GROWN**  
**ROSE BUSHES**  
**3 FOR \$1.89**

# PAY-LESS FOODS

"YOUR ONE STOP SHOPPING CENTER IN OAK HARBOR"



# 1200 Neighbors Coming Soon

Navy Housing To Mean Big Changes

The view won't be quite the same from the Lee Holt farmhouse in a few months. Where the Holts now look out across a quiet, serene Country side, they soon will be seeing the mushrooming growth of a Navy housing development.

Located on the Crescent Harbor Road, the Holts are just across the street from where the new Capehart housing for 390 enlisted men and their families will be under construction soon. Although they are used to the sounds of a busy farm with cows and turkeys, and have three noisy boys of their own, the Holts may have a little trouble adjusting to the immigration of more than 1200 persons which will probably include several hundred children.

Meanwhile the three Holt youngsters, being the proud possessors of the only barn within a mile, are wondering if there will be enough room in it for all the new kids to play. Although their parents are a little wary of the future the children are pretty excited about the countryside changing. Their nearest neighbors now, Glen Westerdyke and Tom Koetje, are about a mile away.

The Holt farm was established around the turn of the century by William A. Holt, Lee Holt's father. In those early farming days, the elder Holt, who was a nurseryman, cleared the land himself and on his small farm, managed to grow most of the staples

to sustain his family. Located four miles out the Crescent Harbor Road from Oak Harbor the 23 acre tract is now planted in wheat, hay and pasture and supports 18 head of Guernsey cows. Last year, young Holt raised 6400 turkey hens. He's biding his time now to see if the market will be any good, before he decides if he will raise more this year. Holt doubts that he will continue farming for many more years. Even without the new housing things are changing for the small farmer, Holt explained.

"It takes a lot more money to keep a farm going, nowadays," Holt said. "The small farmer has a hard time making a living. Even the big farmer is finding it difficult making a go of it."

Holt doesn't know what he will do, but figures his land will increase in value and he may eventually have to sell. Farming in a crowded countryside is pretty difficult, Holt went on.

"We've seen a lot of changes on the Island. Now we're getting them right on our doorstep", Holt said.

But meanwhile, life goes on, and Mr. and Mrs. Holt, along with sons Don, 9, Harry 7, and Richard 4, and the 18 cows and possible 6400 turkeys, will be on hand in the fall, to offer a welcoming handshake, cheerful smile, a friendly Hi, or only a cautious moo or an excited gobble, when their new neighbors being moving in.



SEE BIG CHANGE COMING--Members of the Lee Holt Family expect that there will be quite a few changes coming to the rural countryside around Holt's Corner on the Crescent Harbor Road. Plans for the construction of 390 houses, part of the Navy Capehart project across the road from the Holt Farm. Shown are Mr. and Mrs. Holt and their three sons, from the left Don, 9, Richard, 4, and Harry, 7. The dog is named Spike. Holt was born in the house in the background which was built by his late father William A. Holt. Whidbey Islander Photo

## County Welfare Checks In Mail On Time

Good news for Island County welfare recipients. As far as the county welfare office can determine, there will be no delay in the mailing of monthly checks.

A news story out of Olympia last week reported that there might be several days delay in mailing the checks.

A deficiency appropriation bill to supply the needed funds

was held up by Dale Nordquist, Centralia Republican.

However, the bill was passed in spite of objections and checks were made ready for mailing.

### DEMOS TO MEET

The Island County Democratic Central Committee will hold a business meeting Friday Feb. 27th in the IOOF Hall.

Guest Speaker will be Wilbur Johnson, Snohomish Coun-

OAK THEATRE--THURS. FRI. SAT.

THAT WONDERFUL GUY FROM "NO TIME FOR SERGEANTS" IS GOOFIN'-UP THE COAST GUARD NOW!



ANDY GRIFFITH

Onionhead

FELICIA FARR

WALTER MATTHAU (FRAN COBURN, KEE MANFILL)

SUNDAY-- MONDAY--TUESDAY

THAT FRENCH GIRL'S LOVE NOVEL THAT SHOCKED THE WORLD!



FRANCOISE SAGAN'S

a Certain Smile



ROSSANO BRAZZI- JOAN FONTAINE

BRADFORD DILLMAN- CHRISTINE CARLIER- JOHNNY MATHIS

HENRY FARRON- JEAN INGUERES- FRANCIS GOODRICH- ALBERT HACKETT

JOHNNY MATHIS sets the mood for romance in Paris, City of Love!

COLOR BY DE LUXE CINEMASCOPE

PAGE 9 WHIDBEY ISLANDER FEB. 26, 1959

SECOND SECTION

## Directors Place \$46,800 Levy On Ballot

Directors of Oak Harbor School District 201, meeting in a special session last Thursday, voted to place on the ballot a special levy for \$46,800.

A special election to decide the fate of the measure is scheduled for April 21.

The levy, if passed by the voters would be used by the district to equip the new Jr. High School and as part of the cost of a music room.

Superintendent of schools W. B. Gilbert explained that the total levy would amount to 9 mills. Six mills would be used to equip the school and three mills would be set aside as the district's share of the cost of a music room. The remainder would come from state funds.

Contracts for construction of the new school were set to be signed this week by the directors and the successful bidders. The low bids were submitted by Nelson Const. Co. of Ferndale, Callahan Plumbing and Heating of

Everett and Whidby Electric of Oak Harbor. Nelson is

the general contractor, Callahan the mechanical and Whidby Electric the electrical contractor for the new school project.

The building will house 550 students and will be expandable to 800 students, said Supt. Gilbert. Present plans call for starting next fall

with seventh and eighth grade. The ninth graders will follow a year later. Total cost of the school will be \$680,000.

## Only \$1 For A Whole Year!

Clip and Mail

P. O. Box 488  
Oak Harbor

The Whidbey Islander

CHARTER SUBSCRIBER

NAME \_\_\_\_\_

MAILING ADDRESS \_\_\_\_\_

Subscribe Today Only \$1



# Hesitant Tree Felled To The Cry 'T-I-M-B-E R'



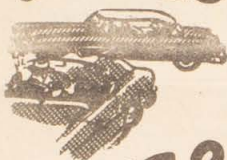
GOING--Chain saw and axe were applied to a hesitant tree at Longpoint last week. The Fir was stopped part way down when it hung up in the branches of another tree.

GOING--Still resting on only a few inches of the stump, the tree resisted efforts of Bus Kreig, left, and Bill Lam to topple it. \*They were wary of a sudden fall.

GONE--There she goes as the sound of TIMBER ran out. Kreig managed a fast retreat to the side as the tree fell to the ground. Several trees were cleared to make room for a park.

ISLANDER PHOTOS

## BRAKES



## SAFE?

Don't Risk Faulty Brakes, Get a FREE Brake Analysis today. We Will give you a written report of the condition of your brake system.

**Wade's  
Richfield  
Service**  
Pioneer Way  
Oak Harbor

### PLATINUM RINGS

Here's a cleaning hint for platinum rings only. Put some diluted laundry bleach into a glass and drop the ring into it for about a half-hour. It will be clean when you remove it.

### PUDDING MOLDS

When it is difficult to remove pudding from the molds dip a cloth into hot water, wring it out, wrap the cloth around the mold, turn it upside down, and see how easily the contents come out.

## TIDE TABLES

FIGURES ARE FOR SEATTLE AREA

Friday, February 27, 1959

FIRST LOW	1:13 a. m.	2.7 ft.
FIRST HIGH	7:21 a. m.	12.2 ft.
SECOND LOW	2:03 p. m.	1.0 ft.
SECOND HIGH	8:20 p. m.	10.1 ft.

Saturday, February 28, 1959

FIRST LOW	2:03 a. m.	3.9 ft.
FIRST HIGH	8:02 a. m.	11.8 ft.
SECOND LOW	2:59 p. m.	0.7 ft.
SECOND HIGH	9:33 p. m.	9.8 ft.

Sunday, March 1, 1959

FIRST LOW	3:01 a. m.	5.1 ft.
FIRST HIGH	8:48 a. m.	11.4 ft.
SECOND LOW	4:00 p. m.	0.4 ft.
SECOND HIGH	10:59 p. m.	9.7 ft.

## School Lunches

THURSDAY FEB. 26

Meat Loaf, Buttered Corn  
Hot Rolls, Milk and Choc'late  
Malt, Cupcakes

FRIDAY, FEB. 27

Cream of Tomato Soup,  
Toasted Cheese Sandwiches,  
Celery Stks, Milk, Ice Cream

MONDAY, MAR. 2

Pizza Pie, Butt Grn Peas,  
Buttered Bread, Milk, Apple-  
sauce and Cookies.

TUESDAY, MAR. 3

Weiners and Sauerkraut,  
Baked Potato, Cheese Sticks,  
Buttered Bread, Milk and  
Fudge Pudding.

WEDNESDAY, MAR 4

Chili, Cabbage and Carrot  
Salad, Hot Rolls, Milk and  
Prune Cake.

THURSDAY, MAR 5

Hamburgers, Butt'd Corn,  
Cheese Slices, Milk and  
Rhubarb Cobbler.

LAUNDERING QUILTS

When laundering quilts do not hang them on the clothesline by means of clothespins as this will pull the inside part of the quilt apart. Hang the quilt across two lines and it will dry quicker and keep its shape.

## INTRODUCTORY Special Style Permanent

Make your hair look both fashion - right and right for you!

CALL OR-5-2626  
The Pink Poodle  
ACROSS FROM SEARS

Memphis, Tenn., school officials have a surprise for prowlers. A device that projects radar waves over a small area does the following things when the signal is disturbed: telephones police, sets off a bright, flashing light, triggers a siren and photographs the prowler.

### COCONUT

If the coconut seems too dry, soak it in milk for a few minutes, and then drain it for use in cookies, cakes, frostings, or puddings.

## Giant Fir Tree Falls at Longpoint

A giant Douglas Fir Tree fell before the chain saw and axe at Longpoint Manor last week.

The forest giant, in danger of toppling on a nearby house, was estimated to be more than 350 years old.

The tree, once a familiar sight on the Island, is rapidly disappearing with the advance of civilization.

Bus Kreig and Bill Lam were on hand to engineer the safe descent of the tree from its lofty heights.

### ORDER



EASTER  
ALBUMS  
NOW

"A record is an Easter Gift the whole family will enjoy"

ISLAND MUSIC CENTER  
OAK HARBOR - CHIMES CORNER

## Shopping Center Being Planned

A Modern Shopping Center Is Being Planned For Downtown Oak Harbor. Adequate Offstreet Parking Will Be Provided. The Entire Project Will Be Designed For Maximum Customer Convenience. If You Are Interested In A Business Location In The New Shopping Center Contact.....

## PATTON REALTY

1120 W. Pioneer Way OR 5-2555

## 1959 JOHNSON SEA HORSE

AS LOW AS

\$5

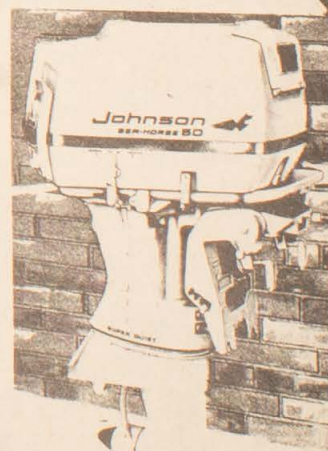
Per Week

AFTER MODERATE  
DOWN PAYMENT

COME IN  
TODAY

OR PHONE

OR-5-2122



Chuck Dann's  
Sporting Goods

DOWNTOWN OAK HARBOR OR 5-2122



# Go To Church This Sunday



## CHRISTIAN REFORMED CHURCH

Rev. Jacob Hekman, 1090 Midway Blvd. Sunday Morning worship 9:30 a. m. Sunday School 11 a. m. Afternoon Worship Service 2:30 Young Peoples Group 7:30 p. m.

## CHURCH OF CHRIST

Near Oak Harbor Grade School Rev. John Fewkes, Everett, Wash., Sunday School 10:00 a. m. Morning Worship 11:00 a. m. Evening Worship 7:00 p. m. Women's Bible Study 10:00 a. m. Tuesday Bible Study Thursday 7:00 p. m.

## SAN DE FUCA COMMUNITY SUNDAY SCHOOL

San De Fuca, Wash. Sunday School 10:00 a. m.

## CHURCH OF JESUS CHRIST OF LATTER DAY SAINT'S

110 Penn Cove President Roy Huntington, 1st Counselor Frederick Rex Johansen, 2nd Counselor Darrell B. Quinton Sunday Worship Services 10:00 a. m. - 7:00 p. m. Priesthood Meeting 5:45 p. m. Sunday Relief Society 10:00 A. m. Tuesday, Primary Wednesday 4:00 p. m. Mutual Improvement Association Thursday 7:30 p. m.

## CHURCH OF THE NAZARENE

Ault Field Road (Old Hwy. 1D) Rev. Forrest Hill, Sunday School 9:45 a. m. Morning Worship 11:00 a. m. Nazarene Young Peoples Society 6:45 Midweek Prayer Meeting Wednesday 7:30 p. m. Midweek Youth Prayer Meeting 7:30 p. m.

## COUPEVILLE METHODIST CHURCH

3rd and Main, Rev. Wayne Wright, Unified Service 10:30 a. m. (Sunday School and Church), Jr. High Methodist Youth Fellowship 5:45 Sr. High Methodist Youth Fellowship 7:00 p. m. Choir practice Thursday 7:30 p. m. Women's Society 2nd Thursday each month.

## FIRST REFORMED CHURCH

4020 40 Avenue West, Rev. Leo Wezeman, Church 10:00 Sunday School 11:15 a. m., Evening Worship 7:30 p. m. Midweek Service Wednesday 8:00 p. m. Young Peoples Christian Endeavor Wednesday 7:00 p. m.

## FIRST BAPTIST CHURCH

6170 60 Avenue East, Rev. Harold F. Jacobsen, Sunday School 9:45 a. m., Worship Service 11:00 a. m. Evening Worship Service 7:30 p. m., Youth Fellowship 6:00 p. m., Midweek Service Wednesday 7:30 p. m.

## FIRST METHODIST CHURCH OF OAK HARBOR

3029 30 Northwest, Rev. Darrel L. Iwerks, Church School 9:45 a. m. Morning Worship 11:00 a. m., Jr. High Youth Fellowship 6:00 p. m. Sr. High Youth Fellowship 7:30 p. m., Senior Choir Wednesday 7:30 Junior Choir Friday 7:00 p. m.

## ST. AUGUSTIN'S CATHOLIC CHURCH

1047 Midway Blvd., Rev. William Dell, Sunday Mass 8:00 11:15 a. m., 12:15 p. m., Holy Days 8:00 a. m., 6:30 p. m., Confessions Heard 10:30 a. m., 8-9 p. m., Saturday Lenten Devotions Wednesday & Friday 7:30 p. m., Catholic Inform. Course Friday 8-9:00 p. m.

## ST. HUBERT'S CATHOLIC CHURCH

Sunday Mass 8:30 a. m. Langley Wash., Rev. William Dell

## ST. MARY'S CATHOLIC CHURCH

Coupeville, Wash. Mass 9:30 Sunday Lenten Devotion Friday 7:00 p. m., Rev. William Dell

## OAK HARBOR LUTHERN CHURCH

Corner 50th NE Street & 300 East Avenue Rev. Arne Aakre Sunday School 9:30 and 11:00 a. m., Morning Worship 9:30 a. m., and 11:00 a. m., Senior Luther League 7:00 p. m., Senior Choir 7:00 p. m., Bible Study 8:00 p. m.

PAGE II—THE WHIDBEY ISLANDER—FEB. 26, 1959

## ST. STEPHEN'S EPISCOPAL CHURCH

Simard Street, The Rev. Richard A. Wakefield, Vicar 2nd Sunday of Lent 7:30 a. m., Holy Communion 9:00 a. m., Holy Communion 9:00 a. m. Church School and Nursery, Monday 9:45 a. m., Morning Prayer Tues. St. Mathias 9:45 a. m., Morning Prayer, 10:00 a. m. Holy Communion, Wed. 7:00 Holy Communion, 10:00 a. m., Holy Communion, 8:00 p. m., Holy Hour, Devotion, instructions in Church Faith

## SOUTHERN BAPTIST

## CHURCH OF OAK HARBOR

Odd Fellow's Temple 300 West Rev. Max Daley, Sunday School 2:00 p. m., Worship Service 3:00 p. m., Wednesday Prayer Meeting 7:30 p. m., Members homes as announced.

## U.S. NAVY SERVICES

Ault Field, Catholic Sunday Masses 7:00 a. m., 10:00 a. m. Protestant Sunday School 9:45 a. m., Worship Service 11:10 Senior Choir Practice Thursday 7:30 p. m., Junior Choir Practice Friday 4:00 p. m.

## ST. AUGUSTINE'S EPISCOPAL CHURCH

Freeland, The Rev. Richard A. Wakefield, Vicar Worship 11:30 a. m., Sunday

**REMOVING PARAFFIN**  
To remove paraffin from a pan, fill the container with boiling water, then cool. The paraffin will come to the surface.

**CHOCOLATE SUBSTITUTE**  
One ounce of chocolate equals 1/4 cup of cocoa. In cake and cookies, add 1 1/2 teaspoons of butter for each 1/4 cup of cocoa to replace the extra richness of chocolate in making a cake and frosting.



**Good Reading for the Whole Family**

- News
- Facts
- Family Features

The Christian Science Monitor  
One Norway St., Boston 15, Mass.

Send your newspaper for the time checked. Enclosed find my check or money order. 1 year \$18 ☐ 6 months \$9 ☐ 3 months \$4.50 ☐

Name

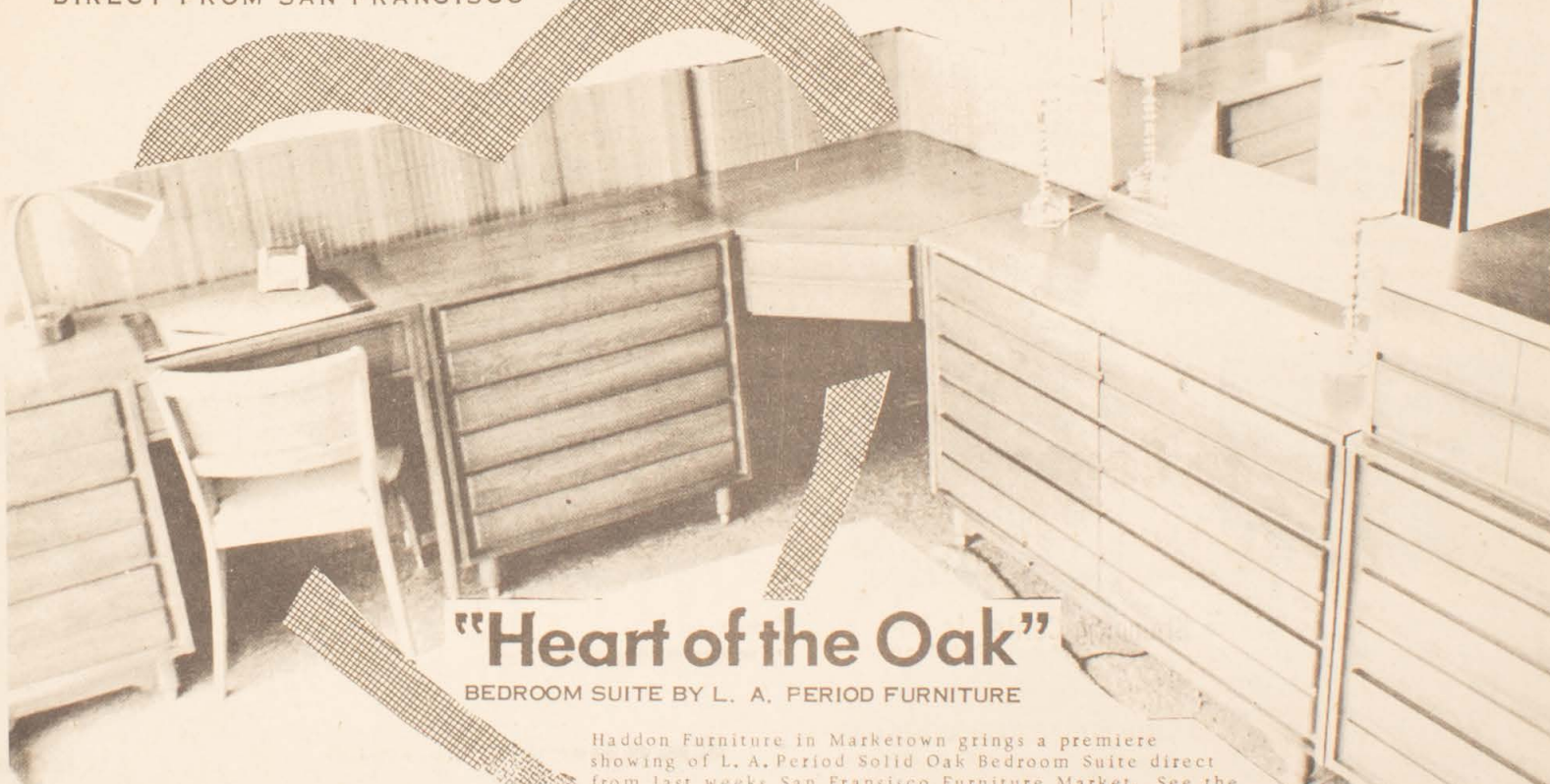
Address

City Zone State

## HADDON FURNITURE

# Premiere Showing!

DIRECT FROM SAN FRANCISCO



## "Heart of the Oak"

BEDROOM SUITE BY L. A. PERIOD FURNITURE

Haddon Furniture in Marketown grings a premiere showing of L. A. Period Solid Oak Bedroom Suite direct from last weeks San Francisco Furniture Market. See the newest classic styling in Suede Oak, finished with nine coats plasticized, silicone waxed, all hand rubbed. L. A. Period Suites are made by the finest craftsmen, guaranteed for 20 years against faulty materials or workmanship. EASY TERMS. Your old suite may be the down payment.

Budget Terms of Course

# HADDON FURNITURE

MARKETOWN

OR 5-2850

- DESK
- CHEST
- CORNER DESK
- DRESSER & MIRROR
- CHEST ON CHEST
- HEADBOARD & FOOTBOARD
- COMMUNE



# MOTOROLA® GUARANTEES ALL TUBES AND PARTS ONE YEAR TUBE SENTRY UNIT 5 YEARS

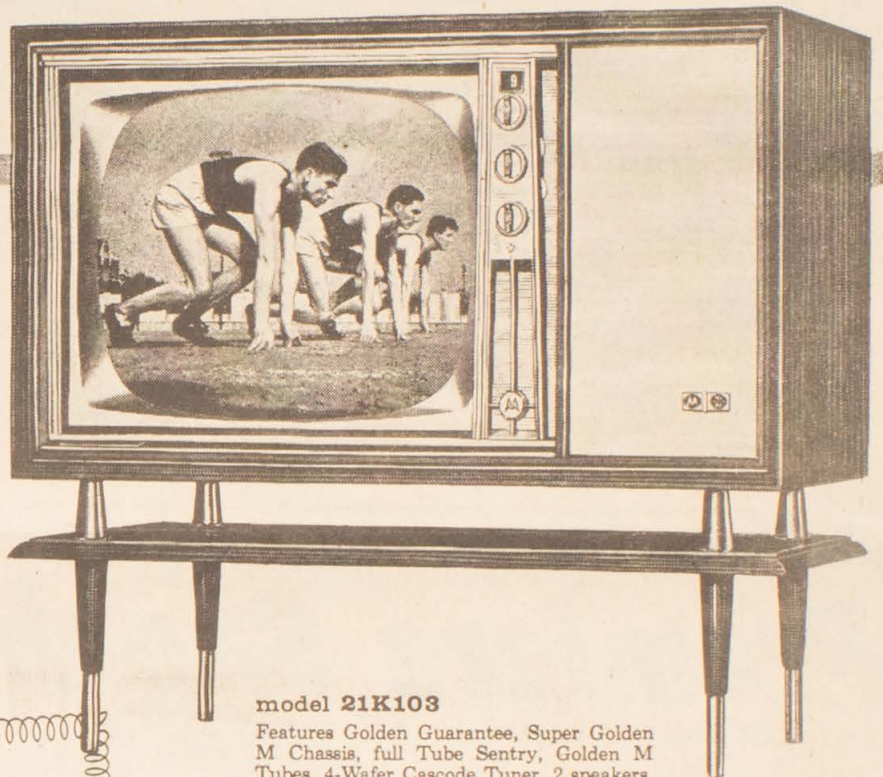
Here is Quality that is unmatched in any other Television today. Quality that offers the Finest in Viewing pleasure as well as eliminating annoying service headaches.

*Golden* TUBE SENTRY UNIT  
*Golden* M CIRCUIT TUBES

Model 21c9  
3 Speakers.  
Swivel Base

## TRADE - IN SPECIAL

Now Priced at 309.95 NO CASH  
Less Your Trade 50.00 NEEDED - ONLY  
You Pay Only 259.95 3 A Week



model 21K103

Features Golden Guarantee, Super Golden M Chassis, full Tube Sentry, Golden M Tubes, 4-Wafer Cascode Tuner, 2 speakers. In Modern Mahogany finish, Blond finish or California Mahogany finish or Contemporary California Cherrywood finish.

**339.95**

\$36.58 DOWN

\$3.70 PER WEEK

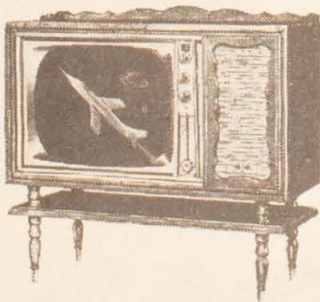
FULL DETAILS AND TERMS ARE CONTAINED IN THE WARRANTY STATEMENT ATTACHED TO ALL MODELS TO WHICH THIS GUARANTEE APPLIES.

### MOTOROLA TV GOLDEN GUARANTEE

Due to the superior engineering achievements embodied in the Golden Tube Sentry\* Motorola extends the Golden Guarantee:

**ONE FULL YEAR WARRANTY ON ALL TUBES AND PARTS**  
**5 FULL YEAR WARRANTY ON GOLDEN TUBE SENTRY UNIT**

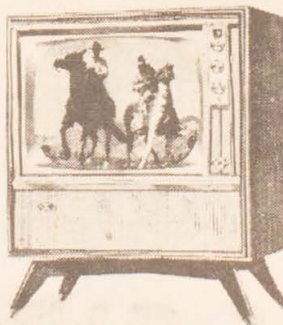
This guarantee represents the culmination of thirty years by Motorola to establish the highest industry standards of dependability and performance.



model 21K103CW

Features Golden Guarantee, Super Golden M Chassis, full Tube Sentry, Golden M Tubes, 4-Wafer Cascode Tuner, 2 speakers. In Modern Mahogany finish, Blond finish or California Mahogany finish or Contemporary California Cherrywood finish.

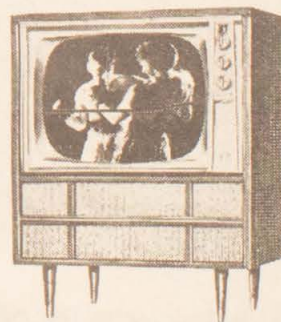
\$359.95



model 21K101

Features Swivel Base, Golden Guarantee, Super Golden M Chassis, full Tube Sentry, 4-Wafer Cascode Tuner, 2 speakers, Golden M Tubes and many others. Available in Mahogany finish, Blond finish, and Walnut finish.

\$229.95



model 21K98

Features Golden Guarantee, Super Golden M Chassis, full Tube Sentry, Golden M Tubes, 4-Wafer Cascode Tuner, Stereophonic input, and many others. Available in Mahogany finish, Blond finish and Walnut finish.

\$279.95



model 21T58

Features Super Golden M Chassis, 4-Wafer Cascode Tuner, full Tube Sentry, Golden M Tubes, New Audio Circuit. In Grained Mahogany finish, Grained Blond finish and Charcoal.

\$229.95



TRADEMARK OF MOTOROLA, INC.

## MOST RELIABLE TV EVER! MOTOROLA BERT ROBINSON'S

315 MAIN STREET, MOUNT VERNON, PHONE ED 6-3148