

RURAL
BOXHOLDERBULK RATE
U.S. Postage
PAID
Permit No. 16
Oak Harbor, Wash.Published weekly by
the Whidbey News-Times
and Whidbey Island Record

Whidbey Today

The only home publication serving all of Whidbey Island

OAK HARBOR, WASHINGTON

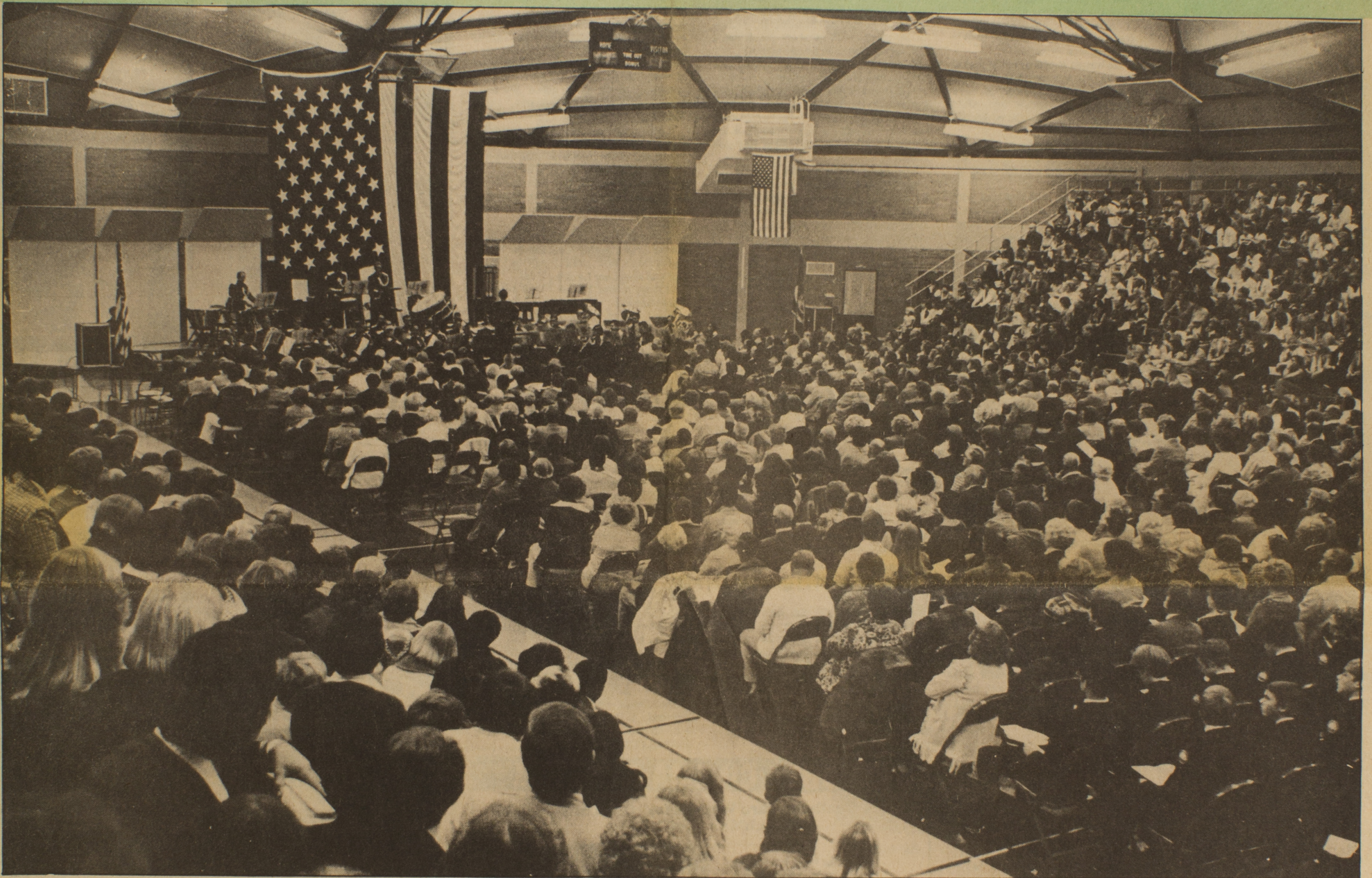
VOLUME 1

NUMBER 2

MONDAY, OCTOBER 6, 1980

Sandy vs. Sandy —

See Sports, page 2



Crowds filled the Oak Harbor High School gym two years ago to hear the U.S. Marine Band. The band is coming here again on Oct. 9.

U.S. Marine Band coming to Whidbey Oct. 9

The Marines will storm the beaches of Whidbey Island Oct. 9 and the "weapons" they will use with the hope of capturing the insular populace are not found in the conventional arsenals.

They plan to do it under the title of the U.S. Marine Band with musical instruments.

If their "strategy" of two years is repeated, there is no doubt who will be the winners. It will be the proud Marine ensemble which has been scoring victories from the White House, where they perform as "The President's Own" to remote and not-so-remote outposts throughout the United States and world.

The 54-person band has received highest marks from an assortment of

audiences and critics.

"They are among the very best, bar none," a Washington, D.C. music critic has written. "If you have a chance, don't miss them. They are professional musicians who would be superior talents in any symphonic organization in the nation."

During their first appearance in Oak Harbor Oct. 14, 1978 the Marine Band played before a packed house at the high school gymnasium. It was the largest crowd ever drawn for an admission-charging event in island county.

The reactions of those in attendance were unanimous. The concert, ranging from popular to patriotic to classical fare, was declared a brilliant success.

The return of the band was prompted by the reception received here. Robert J. Dunn, national tour director who operates out of Oxon Hill, Md. called the local appearance "the most successful (from an attendance point) and warming (to the musicians)" on their five-concert tour of Washington.

Advance ticket sales are at the Navy Exchange, on the Seaplane Base, Island Savings and Loan outlets in Oak Harbor, Clinton, Freeland, Anacortes and Mount Vernon; at Olympic bank branches on Pioneer Way, Midway Blvd. and the Naval Air Station, Ault Field; Whidbey Island Bank in Oak Harbor and Coupeville, the Whidbey Federal Credit Union and Oak Harbor High School.

Tickets will also be on sale at the gymnasium box office the night of the concert. The doors open at 7 p.m. and the performance, under the direction of Lt. Col. John Bourgeois, will begin at 8 o'clock.

Chairing the event are Herb Pickard and Orlan Dean. The concert is being sponsored by the Oak Harbor Area Council of Navy League and proceeds after costs are earmarked for various OHAC programs which include support of the Golden Intruder Sea Cadet unit here, long-distance calls home for NAS enlistees during the Christmas season, and various awards given annually by the organization to standout Navy, Marine and Oak Harbor high school's

NJROTC personnel.

The Navy League will also be assisted by members of the Marine Barracks here. Major Richard Hodory and First Sgt. "Dutch" Strele are in charge of uniformed Marine ushers and other details preparatory to the Band's appearance. Members of the Marine Air Group Detachment 46, under the leadership of CO Lt. Col. Duane Jensen, will also participate in the event.

Prices for tickets are \$3.00.

"This is the best entertainment buy that will come along," Al Koetje, OHAC president, said. "We have priced tickets as low as possible in order that whole families will be able to attend. It is an

event that will appeal to both adults and children and is superior family entertainment."

The Marine Band opens a five-performance stand in Washington state Oct. 5 in Cheney. The following night it's on to Richland, Oct. 8 they will appear in Wenatchee, Thursday, Oct. 9, it's Oak Harbor and then on to a concluding concert in Yakima.

Those planning to attend are urged to buy tickets in advance in order to avoid lines at the box office that night.

The Marine Band appearance coincides with Navy Week ceremonies which are being observed locally from Oct. 5 through 11.

Potential moorage sites need identification, say planners

The Island County Planning Department has some questions concerning 17 potential small boat moorage sites in Island County identified recently in a rough draft study by the U.S. Army Corps of Engineers.

The Corps' list of Whidbey and Camano Island locations does not well enough identify the potential moorage sites, planning director Syd Glover wrote in a letter to the Corps last month.

The Corp had requested county comment on the moorage sites and the county responded with some information on local policies.

"We regret, however, not being able to provide any real indication of the acceptability of the various sites from a land use compatibility standpoint due to a lack of information on the location and

development concept of each facility," Glover wrote.

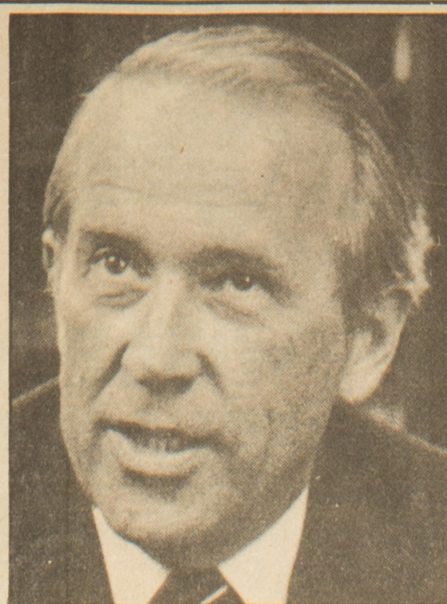
Additionally, the planning department has indicated there are other sites in Island County suitable for moorage expansion that were not included in the Corps study. Cornet Bay is one spot Glover mentioned as having the potential for additional moorage.

Glover requested county planners get a chance to meet with Corps representatives to discuss particular sites before their study is completed.

The Corps' list of sites was headed by what they indicated were the three most probable areas. Those were an expansion of the current Oak Harbor marina, moorage near the City of Langley dock and near the Flintstone Park area in Oak Harbor.

Scoop plans visit

U.S. Senator Henry M. Jackson will speak at a special breakfast sponsored by the North Whidbey Chamber Oct. 14. See page 6.



Inside . . .

Opinion page: Support United Way. Page 7.

Inflation is driving food prices way up. Page 10.

Column: Over the Back Fence. Page 11.

A new feature in Whidbey Today: Crossword puzzle. Page 16.

Two of the state's best runners

Gabelein versus LaFond at Langley Invitational

by Steve Potter

Whidbey Island high schools produce quality runners frequently, but a rare few are championship calibre athletes.

Currently, two of the best female runners in the entire state are products of Whidbey schools.

Harriers Sandy Gabelein of Langley High and Sandy LaFond of Oak Harbor High are genuine champions.

Gabelein, a senior, comes from a small school, class 'A'-sized, and did not start competitive running until 18 months ago.

LaFond, a junior, attends a larger class 'AAA'-sized school and began winning races back in junior high.

Success came immediately for both in their high school careers.

Gabelein turned out for track in spring of 1979, her sophomore year, and advanced to the state meet where she ran a leg of Langley's mile-relay state championship squad and placed second in the state at a half-mile.

That fall Gabelein made a name for herself on the hills and trails of the cross country courses as she won the class 'A' Northwest District title.

The following week, she was sick with the flu for three days prior to the state meet, but got out of bed to place ninth which helped the Falcons capture the class 'A' state team championship.

In the spring of 1980, Gabelein went back to the state 'A' track meet where she earned a state crown in the mile run and a third in the half-mile.

LaFond experienced nearly similar success although state championships have yet to materialize for her against

the tougher competition of the larger schools.

Two years ago as a freshman on the Oak Harbor High cross country team, LaFond won the class 'AAA' NW District title.

The following week at the state meet, she finished 10th overall to lead the Wildcats to eighth place in the team standings.

At last year's district cross country meet, LaFond took third behind two girls from Shorecrest, which only joined the district in 1979.

Oak Harbor did not qualify for the state meet, but LaFond did and finished 16th.

In track, LaFond has qualified in the two-mile at two consecutive state class 'AAA' meets with her best finish being last spring when she placed eighth.

Despite the obvious talent of each girl, they have only met competitively once and that was at last year's Langley Cross Country Invitational.

Gabelein beat LaFond, but barely after the two ran side-by-side throughout the entire 1.9-mile race at Useless Bay golf course.

The two will be in the field at the second annual Langley Invitational this Friday, Oct. 10 again at Useless Bay.

The invitational is the brainchild of Langley coach Carl Westling and involves male and female teams from 10 different schools of all sizes.

Besides Langley (class 'A') and Oak Harbor (AAA), other schools present will include Mariner (AAA), Lake Stevens (AA), Lakeside (AA), Friday Harbor (B), Stanwood (AA), Tolt (A), Sultan (A) and LaConner (B).

While Gabelein and LaFond are

checking each other out over the expanded 2.6-mile course, they will have to be careful to watch Lakeside's Maegan Carney, who took second at the state 'AA' meet last year as a freshman.

The varsity girls' team title will be a fight between Langley, Lake Stevens and Lakeside, according to Westling.

The varsity girls' race is set for 4 p.m., followed by the varsity boys.

In the varsity boys' meet, Westling thought Mariner and Lake Stevens would be the favorites.

There will also be competition in a junior high age group, although there are not that many seventh and eighth-grade runners coming to the meet.

A junior varsity meet for both males and females will precede the varsity competition.

"We have five different races in order to keep the number of runners to a minimum on the golf course. We don't want to tear up the course," said Westling.

Westling added Useless Bay is a great place to watch a race because most of it can be seen from the start-finish line.

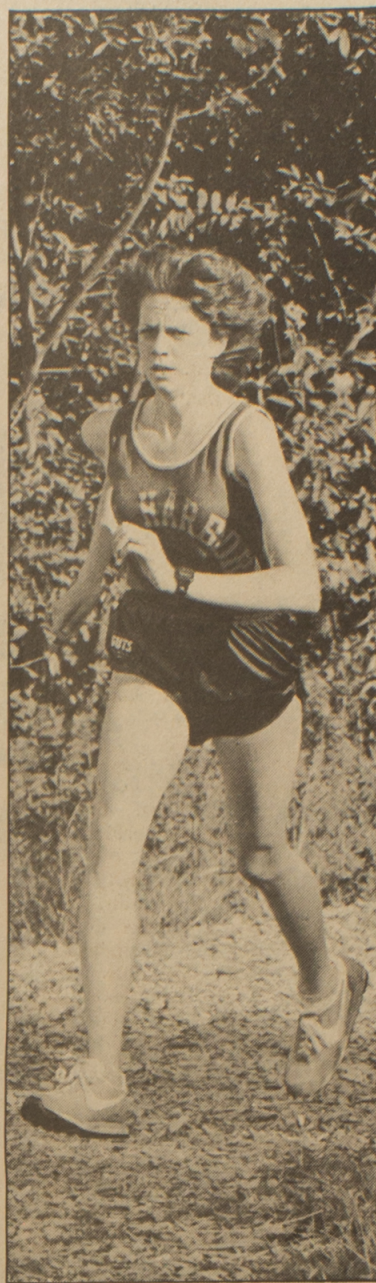
There will be lots of excitement at the meet, but probably the best race will involve two Whidbey girls named Sandy.

Both runners are confident of their chances.

"I hoping to beat her. I think I can do it, but we have a league meet the day before and I don't how tired I will be," said LaFond about her Langley rival.

"I'll try to win. I think I'll be able to," Gabelein said.

When two of the best runners in the state meet, no matter which one wins, it will be enjoyable just to watch the duel.



Sandy LaFond



Sandy Gabelein

Dock of the Town

by Mike Bunnell

Oak Harbor

gets some ink

This month's issue of "Nor'westing" launches a series of articles on Pacific Northwest ports with a detailed look at Oak Harbor.

The series will not use photographs as a general rule, but this one includes two pictures of local boats and local people.

More news from the publishing world: "Sailing", that oversized small-circulation national magazine published in Port Washington, Wisconsin, is slated to carry an article in the September issue about last May's San Juan 7.7 Nationals. The editors have set aside space for three photos and an undetermined amount of text.

Trouble is, here we are near the end of September, into October, and the August issue is still on the stands.

For participants who may want to see themselves in "Sailing", Eddystone Light in the Harbor Mall at Bellingham is the nearest retail outlet we've found for this publication.

Powerboats

head north

Bellingham, by the way, will be next weekend's (Oct. 4) destination for the powerboat contingent of the Oak Harbor Yacht Club.

This will be the first time the club has rendezvoused there. Advance information has elicited the fact that at the Squalicum Harbor visitors get free moorage for the first 24 hours, after which the rate is ten cents per foot.

Some of the local cruisers may leave Friday afternoon and anchor out for the night, but the main body of the flotilla is

expected to make the trip on Saturday.

Plans are for everyone to arrive by 4 p.m. and to freshen up for an evening of dinner and dancing at the Bellingham Yacht Club.

Tropic Star

back at dock

Those of you who love to walk the docks in the rain — yes, both of you — will have noted by now that Walt and Fran Peterson have returned with their schooner "Tropic Star." This pillar of the Oak Harbor boating scene is back at the end of B Dock.

Sailboats

compress series

The Oak Harbor Yacht Club's sailing fleet has taken to running off a whole series of races in a couple of weekends.

To some extent this defeats a basic purpose of series racing, which is to provide enough outings for those who miss a day, or a week, to still have a shot at placing.

On the other hand, it takes advantage of whatever good weather there is and gets a whole bunch of races out of the way in short order.

That's what happened last weekend, when the first half of the Rum Pumpkin series was sailed in moderate to downright stiff winds.

Dave Harrington and Wayne Hesselgrave had firsts on Saturday, and Hesselgrave took another first on Sunday.

Four San Juan 7.7s went out for some class racing, and Dennis Deskey, coping with a few crew problems, skipped "Juan Ton Sloop" to three straight firsts.

Christiansen recall group forms

A committee has formed to work on recalling Island County Commissioner R.W. "Bob" Christiansen, but don't expect to see the recall measure on November's ballot.

The Camano-Whidbey Committee to Recall Christiansen will file with the Public Disclosure Commission within the next few weeks, according to the group's chairman, Jack Cheney.

But Cheney said it would be premature to discuss charges the committee will include on the recall petition, until the members finish their legal research.

"We don't want it to go off until we're sure it's really going to fly," said Cheney, a Camano Island resident.

Camano resident John Coatney is treasurer of the recall committee.

Christiansen, the District 3 com-

missioner from Camano Island, does not come up for reelection until 1982, but he has come under heavy criticism in the past several months. Citizen queries and complaints alleging a conflict of interest stemming from Christiansen's real estate activities prompted a Whidbey News-Times investigation that uncovered several instances in which Christiansen acted in an official governmental capacity on matters in which he, his wife, or business partner had a financial interest at the time.

Christiansen owns Rocky Point Realty with partner Allen Gilbertson.

He is in the middle of his third four-year term as county commissioner.

Coupeville selling sports pass

One ticket which allows fans entry to all Coupeville home athletic contests for the current school year is on sale now.

The cost of the All Sports Pass is \$25 per adult which allows entry into football, boys' basketball, girls' basketball, girls' volleyball and all junior high athletic contests.

If a person went to only the five football games and 10 boys' basketball games, they would incur a savings of \$5.

Even a better deal exists for a husband and wife with their tickets costing \$40 for the couple.

A family which has purchased adult tickets may buy children's passes for \$5 each.

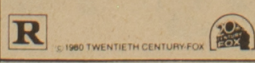
The Coupeville All Sports Pass is available at the high school office from 8 a.m. to 3:30 p.m. during the week or at football games.

WHIDBEY CINEMA 675-4001

Continues thru Wednesday, October 8
Showtime 7:30 p.m. — Out 11:30 p.m.

The most wanted man in Wakefield prison is the Warden.

Robert Redford
"BRUBAKER"



also: "STRAIGHT TIME" (R)

FREE
ONE YEAR FINANCING
on any stove purchased in October
O.A.C. 10% down required



WHIDBEY
FIREPLACE ETC.

Formerly Midway Farm & Home Center
In Island Plaza 675-3873

"Joni's story of victory over a devastating handicap is sure to touch the lives of all who suffer brokenness. I urge you to see this powerful film."

Billy Graham

"A compassionate, sensitive, heart-warming story. I highly recommend this movie."

Leighton Farrell,
Highland Park Methodist
Dallas, TX

"A significant Christian film that has moved me deeply."

Bill Bright — President,
Campus Crusade

"An unmatched testimony of Christian faith and courage that should be seen by everyone."

Wayne Dehoney
Past President,
So. Bapt. Conv.

"Joni Eareckson is one of the finest examples in the world today of the power of the human spirit through the grace of our Lord Jesus Christ to overcome triumphantly physical circumstances."

Pat Robertson —
President, Christian
Broadcasting Network

"May be the most moving human interest drama God has ever permitted mere man to produce."

John F. Steadman
Baltimore News American

Joni



STARRING JONI EARECKSON AS HERSELF

BASED ON THE BEST-SELLING BOOK BY JONI EARECKSON WITH DE WISSET
A WORLD WIDE PICTURES RELEASE IN METROCOLOR

STARTS FRIDAY
OCT. 10

WHIDBEY
CINEMA

SHOWTIMES:
7:00 and 9:15 p.m.
each day

Advance Tickets for this movie only, may be obtained at "The Place" 1254 W. Pioneer Way, Wright's Center. Phone 675-1430. Open Sept. 10 thru Oct. 16, 9:30-5:30.

JONI COUPONS ACCEPTED
NO OTHER PASSES

ONE WEEK ONLY

*Sealy's best in its
day is back again
...at 1975 prices!*

SINCE 75 PREMIUM BEDDING HAS INCREASED OVER 40%



HADDON FURNITURE
Old-time Value Sale



We want to bring you bedding value that hasn't been seen since the "good old days"! The Sealy factory is helping us by duplicating the identical features found on their best selling, premium quality mattress from 1975...

- Same offset design coils for excellent support, no "roll-together" sleeping
- Same unique torsion bar foundation for extra firmness, extra years of sleep set performance
- Same rich damask cover multi-quilted over luxury layers of Sealyfoam®

Back again only
\$109⁹⁵
Twin
ea. pc.

Full each piece.....\$129.95
Queen 2-piece set.....\$319.95
King 3-piece set.....\$459.95

Haddon Furniture
1449 Midway Blvd. Oak Harbor 675-2850

FRIDAY thru SUNDAY
OCT. 10-12

"MS. MIDLER IS A WONDER
AND A STUNNER."

—Charles Champlin,
Los Angeles Times

BETTE MIDLER
ALAN BATES

THE ROSE



plus:

ALL THAT JAZZ

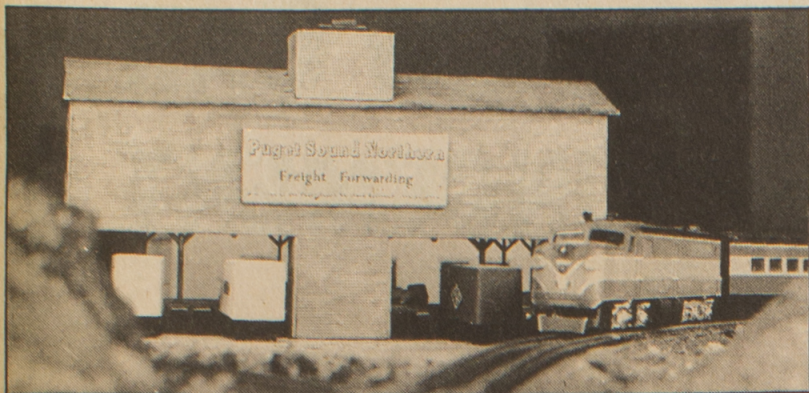
Blue Fox

**DRI-VIN
THEATRE**

675-5667

Box office open 7:00
Show starts 7:30

3 mi. so. of Oak Harbor on Hwy. 20



The Puget Sound Northern locomotive makes its way past a freight warehouse.

Model Railroading

A world in miniature

by Nick O'Connell

You are one inch tall. This morning while combing your hair, you noticed something funny about the full-length mirror. You leaned closer to examine the mirror and you fell in. It felt as if you were in an elevator and the elevator was going down, fast. You blacked out.

When you came to and tried to climb back out of the mirror you found something had happened. You had stepped into the full-length mirror before, but this time you had to jump down ten feet to reach the floor.

As you land, you trip and fall on a large black fishbone. Puzzled, you get up and look around. All at once you see it, a gleaming white mountain. Mount Rainier, you think, but no; it's the wrong shape and the sides are of gleaming white porcelain rather than snow.

Maybe it is a monument. But if so, who was it erected to?

Then it hits you. This mountain is your toilet bowl and the black fishbone is your comb. You're not in another world, you're in your own world, you've shrunk.

Your first thought is, quick, avoid the cat. Then you remember that you put the cat out last night so your safe. You have to get to work but how in the world could you depress the gas pedal, turn the steering wheel or even open your car door? It's impossible. You need to find a world more suited to your own scale. Where will you go?

One place is the Parkwood Manor Clubhouse. You could lasso a grasshopper with a length of spider web (carefully avoiding the spider), saddle it up and ride it over to Parkwood Manor trailer park.

There, the Whidbey Island Model Railroad Club has its model railroad

layout. For several years they have labored to construct a world in miniature, duplicating down to the smallest detail the larger world most people live in.

There, they have trains on which a one inch man could ride comfortably. The buildings have appropriate-sized doors, windows, and furniture; a miniature man would feel right at home. This world created by the railroad club is clean and tidy; there are no slums, no red-faced, drunken bums, no litter included in the set. No grime coats the locomotives or box cars, and the painted plastic inhabitants will give you no trouble.

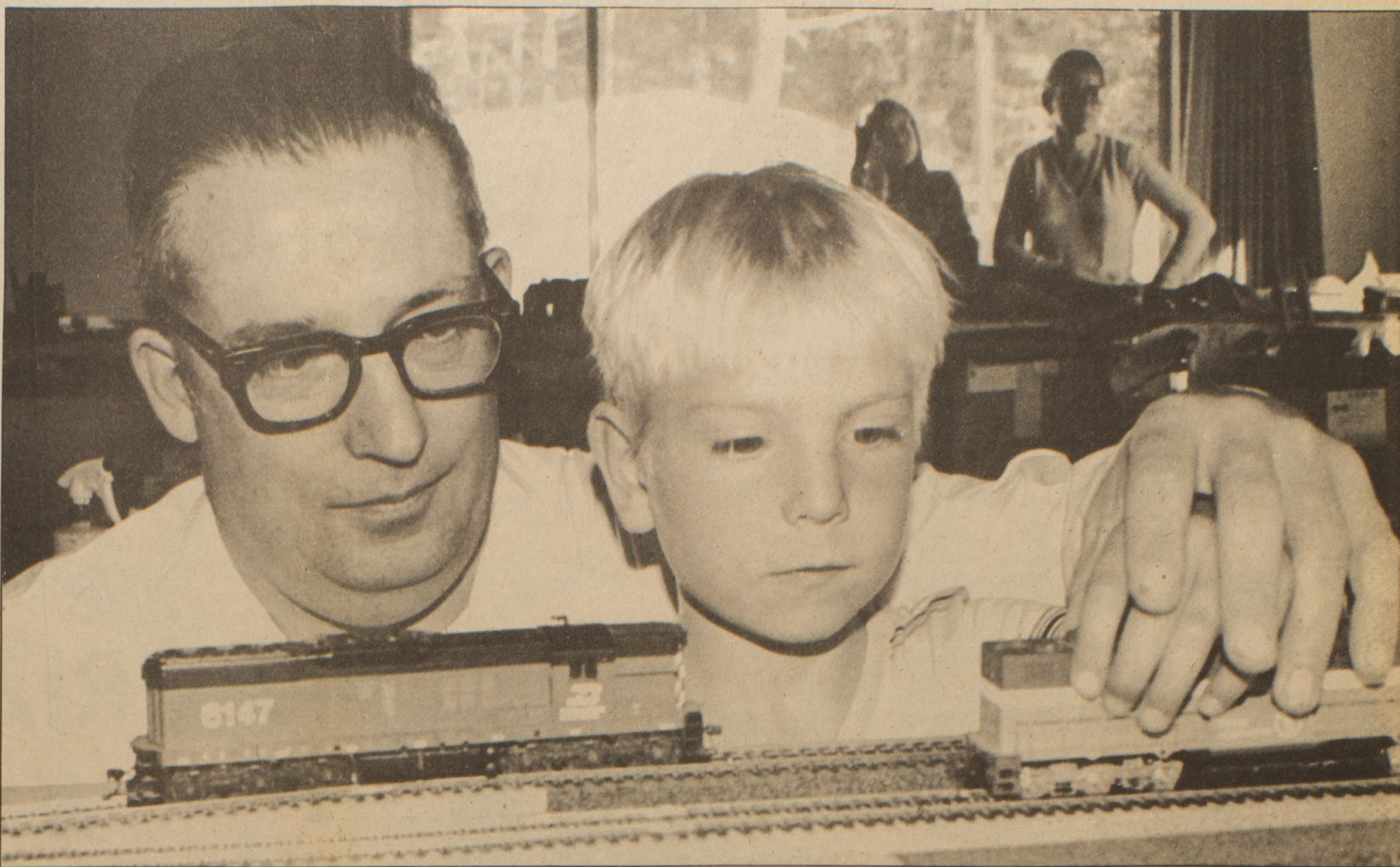
The Whidbey Island Railroad Club would be glad to have you. For the past seven years they have devoted themselves to creating these miniature worlds. The 20 active members of the club delight in the miniscule. This delight leads otherwise normal and prudent adults to spend gobs of time pouring over the track layout of the Puget Sound Northern Line. This is the railroad club's fictional railroad line.

The railroad line operates in the 1950's around Puget Sound, and the buildings in the club's layout reflect this period. Club members make the layout as historically accurate as possible, even nailing down wooden railroad ties individually.

Reconstructing a railroad in this period allows them to use steam and diesel locomotives which are more picturesque than the modern electric locomotives. But it also restricts them; they can't build miniature McDonald's hamburger stands.

Within those limits, the Whidbey Railroad Club has constructed a remarkably detailed set.

The miniature buildings are painted down to the knotholes and cracks in the



Like father like son: Jim Winters shows his son Timothy how to put the locomotive on the track. All of the Winters family gets involved in model railroading; for them it's a family affair.

doorjamb. Molded plastic men have painted faces no bigger than the head of a pin. They sport black suits and the world's tiniest ties.

Surrounding the railroad stations are mountains of wire mesh, papier-mâché, painted in earthtones and then glued with a variety of materials to represent the fauna and geology of the area. Kitty Litter becomes boulders, green lichens trees, and green and orange hobby sponge shrubs.

Many of the locomotives are hand-made, as are many of the box cars, or "rolling stock" in model railroad terminology.

Working on the layout is time-consuming and the fine detail work requires much skill. As railroad club Vice President Jim Winters says, "Working on the layout requires the talents of a geologist, artist, engineer, electrician and mechanical designer."

Winters is a soft-spoken man with a lively interest in model railroading that

dates back to when he got his first train set at age four. He still has the set, and over the years he's added many more.

He has passed on this interest in railroading to his sons and daughters and even his wife. Making model railroading a family affair fits in with the railroad club's objectives. "We formed the club so that we could pool our resources and make larger layouts but we also did it for fellowship," Winters said. "Spending time together and exchanging ideas is what makes the club."

Besides building model trains, the club helps preserve steam locomotives. They donate money to support historical railroads like the Whatcom Steam Railway and the Skagit River Railway.

Occasionally, the club unveils its layout to the public. The club will have a public showing on October 11 at the Whidbey Federal Credit Union.

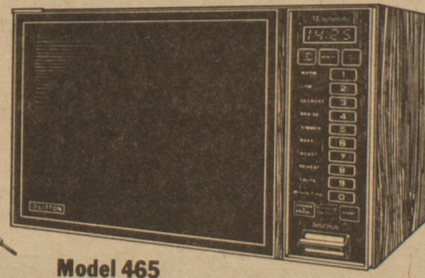
All are invited to come, especially one inch men that need a roof over their heads and have no smaller place to stay.



Marge Winters' hand in the background shows the small scale of the model railroad.

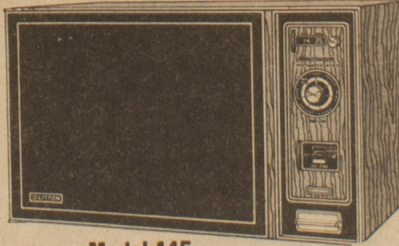
Microwave Oven

CLOSE-OUT SPECIALS

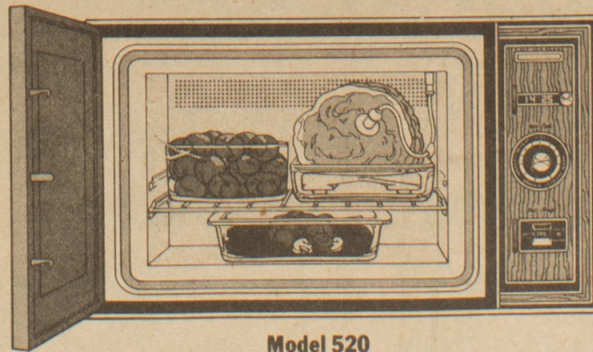


Model 465

Here's a family-size Litton microwave with new Hold-Warm.



Model 445



Model 520

The only family-sized Litton with all these features:

- Touch Controls. You can program perfect meals at the touch of a finger.
- Memorymatic® microwave program cooking.
- Vari-Cook® variable power oven control.
- Vari-Temp® automatic temperature control with food sensor.
- Family-sized 1.2 cu. ft. interior.
- Automatic Hold Warm.

LITTON
Microwave Cooking

- Lets you microwave foods just right, then keep them warm until ready to serve.
- Vari-Cook® variable power oven control cooks, reheats, roasts, simmers, warms or defrosts.
- Vari-Temp automatic temperature control with food sensor insures proper doneness.
- Automatic Hold Warm.
- 99-minute digital timer.

- Sealed-in ceramic shelf.
- Large easy-clean 1.2 cu. ft. acrylic interior.
- Optional family-size Micro-Browner® grill sears, grills, browns.

Model 445 suggested retail price

LITTON
Microwave Cooking

The first microwave to cook 1, 2, 3 foods at once.

Just put one, two, three foods — or a complete meal — into the oven together. Then cook by time or temperature. With Litton's exclusive Meal-In-One™ cooking system, the microwaves enter the oven interior from both sides to completely surround and cook the food more evenly. The oven will even hold everything warm until ready to serve. It's microwave cooking at its best.

NOW IS THE TIME TO BUY AND SAVE!

1 only ...	Model 445	Reg. \$449.95, now \$419⁹⁵
2 only ...	Model 465	Reg. \$519.95, now \$479⁹⁵
2 only ...	Model 520	Reg. \$599.95, now \$499⁹⁵
2 only ...	Model 1550	Reg. \$619.95, now \$559⁹⁵

All other Microwaves and Accessories on special too!

Bayshore Furniture

1249 W. Pioneer Way Oak Harbor 675-5909

jazz-er-cise®

Pam Headridge
675-9155

Mon.-Wed.: 10:30-11:15 a.m.
Whidbey Golf & Country Club

Tues.-Thurs.: 9:45-10:30 a.m.
Dugallia Clubhouse



CAMERA READY COPY
MAY BE:

- Typewritten • Printed
 - Hand Drawn • Clippings
 - Or any combination
- 5 1/2 x 8 1/2
8 1/2 x 11, 8 1/2 x 14

3 HOUR SERVICE

WHIDBEY PRESS
3098 300th W. 675-6611

There's a new store in
old downtown Oak Harbor

Accents

expressive accessories
NORTHWEST ARTISTS AND CRAFTSMEN

Don Hoskins
Louise Taylor
Chuck Hemminger
Janice Bond
Monte Bianchi
Janice Hyde
Alix Denzler
Gladys Rockwood

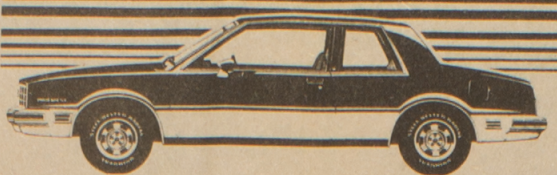
Julia Driskell Stein
Leona Bagley
Lee Mann
Paul Arends
Ed Walker
Lorraine Denzler
Gregg & Kathy Riggs

Gordon Fisher
Charlie Davis
Mr. & Mrs. Terry Williams
Tom Trapp
Jim Farr
Diane Murphy
Toney Beth
Cabbie Glass

★ Gift Selection ★ Cards ★ Calendars
Next to Wind & Tide Bookshop
1112 West Pioneer Way 675-0974

SOUTH WHIDBEY AUTO SHOW

**FRONT WHEEL
FUN**



1981 NEW CAR ANNOUNCEMENT

★★★★★★★★★★★★★★★★
**Best-selling
front wheel
drive car in
America.**
★★★★★★★★★★★★★★★★



1981 Citation

**YOU'RE
MONEY
AHEAD
WITH
MALIBU.**



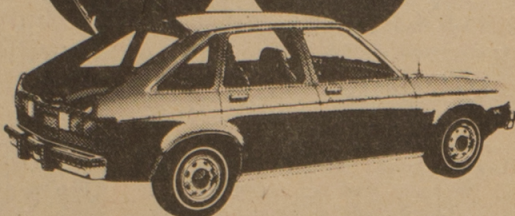
Chevrolet's most affordable
six-passenger car.

FRIDAY and SATURDAY
Oct. 9 and 10
10 a.m. til 6 p.m.

ON
SOUTH WHIDBEY
AT
FREELAND

PAYLESS FOODS
PARKING LOT
Why Not Drive One?

30 ^{MPG}



**CHEVY CHEVETTE.
AMERICA'S BEST-SELLING
SMALL CAR.**

The 1981 Chevette has the highest EPA mileage estimate of any Chevrolet. Plus a long list of standards including reclining front bucket seats* 1.6 Liter 4 cyl. engine and more. Chevy Chevette's up ahead for '81. *Except Scooter

30

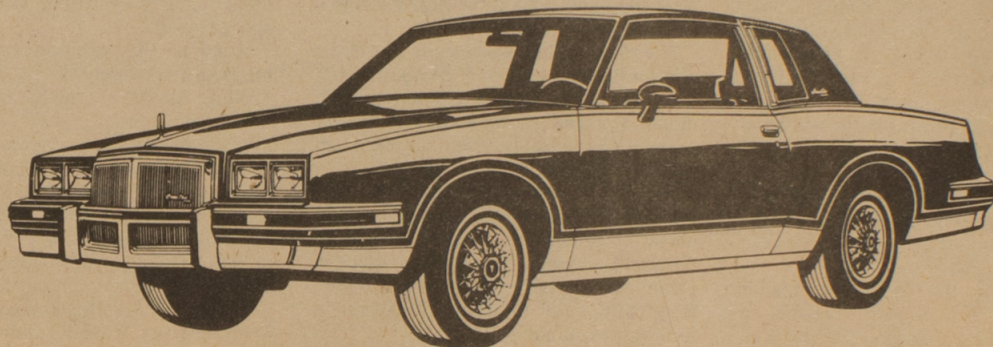
EPA EST. MPG

39

EST. HWY.

★ **PRIZES**
★ **GIFTS**
★ **FAVORS**

**'81 PONTIAC
GRAND PRIX BROUGHAM**

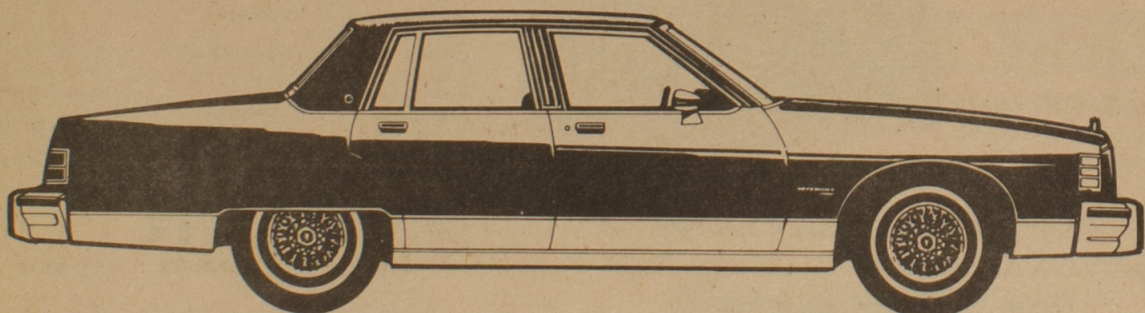


**A GREAT WAY TO GET
THE MILEAGE OF A DATSUN
WITHOUT HAVING TO
DRIVE ONE.**

1980 CITATION STK. NO. C0204
1980 CITATION STK. NO. C0228
1980 CITATION STK. NO. C0229
1980 PHOENIX STK. NO. P0082

GM
"X" CARS
REDUCED
\$517⁵² EACH
1980
"CAR OF THE YEAR"

BONNEVILLE BROUGHAM



**WITH A BETTER MILEAGE
RATING AND MORE ROOM
THAN AUDI 5000.**

DEMONSTRATOR DISCOUNT

*Discounts deducted from suggested retail posted price.

1980 BONNEVILLE 4-Door Stock No. P014	SAVE \$1899²³
1980 BONNEVILLE 4-Door Stock No. P019	SAVE \$2323³⁵
1980 BONNEVILLE 4-Door Stock No. P029	SAVE \$2159⁴⁸
1980 CAPRICE CLASSIC 4-Door Stock No. C028	SAVE \$2329⁹²
1980 MONTE CARLO Coupe Stock No. C037	SAVE \$1218⁹⁰
1980 CHEVROLET SUBURBAN Stock No. T004	SAVE \$2506¹⁹
1980 DIESEL 1/2 TON PICKUP Stock No. T057	SAVE \$2136¹⁵
1980 CITATION X-11 Coupe Stock No. C0190	SAVE \$ 563⁶⁰
1980 CAPRICE CLASSIC Sta. Wagon Stock No. C017	SAVE \$1805²¹
1980 IMPALA 4-Door Sedan Stock No. C029	SAVE \$1815⁰⁹
1980 IMPALA Coupe Stock No. C0200	SAVE \$1500⁴⁷

IT COSTS LESS
TO MAINTAIN A
GENERAL MOTORS
AMERICAN-MADE CAR

**2 DAYS ONLY
OCT. 9
OCT. 10**

**PAY-LESS FOODS
FREELAND
SOUTH WHIDBEY
AUTO SHOW**

**DON BOYER, INC.
CHEVROLET · PONTIAC**

DOWNTOWN OAK HARBOR 675-6604

**CHEVROLET
PONTIAC**

DON BOYER

GM

Start fresh each day with dairy foods.

• meat specials •

3-5 LB. AVG.
Pork Spareribs
fresh & meaty
lb. **\$1.09**

JENNIE-O.
turkey hams whole or half, lb. **\$1.59**
USDA CHOICE
beef cube steaks lb. **\$2.49**
FRESH
pork blade steaks lb. **\$1.39**
FRESH
fryer breasts washington grown, lb. **\$1.69**

TOP SIRLOIN Beef Steaks

usda choice
lb. **\$3.39**

FRESH
fryer legs washington grown, lb. **\$1.29**
FRESH
fryer thighs washington grown, lb. **\$1.49**
HEAD OFF
whole salmon 4-6 lb. average, lb. **\$2.89**
KIPPERED
salmon tips lb. **\$1.39**

Bottom round Beef Roast

usda choice
lb. **\$2.29**

Hillshire Farms
Octoberfest
Smoked Polska
or Hot Links
lb. **\$2.09**

ARMOUR
lunch meats 9 varieties, 12-oz. **\$1.19**

Pierce Old Faithful
sliced bacon 1-lb. **\$1.49**

• frozen foods •

WESTERN FAMILY Vegetables

cut corn, peas, mixed
10-oz. **4/\$1**

WESTERN FAMILY
potatoes steak cut, 24-oz. **67¢**

JENO'S
bagged ravioli cheese, meat, 30-oz. **\$2.49**

JENO'S
egg rolls meat & shrimp, shrimp, 6-oz. **79¢**

Pay-Less FOODS

"Whidbey Island's Finest Stores!"

• OAK HARBOR
• FREELAND

With the kids back in school, it's important that they get off to a bright start every morning. One way that combines convenience and good nutrition is with fresh dairy foods. Dairy foods are one of the four basic food groups that kids and adults alike need in their daily diet.

Milk, butter, eggs and yogurt are just some of the many good-for-you foods you'll find in our dairy case. We code-date all our perishable dairy foods, so you're assured of them being really fresh.

Come on in and get your students off to a smart start with fresh dairy values at Pay-Less.



PRICES EFFECTIVE OCTOBER 6 THRU OCTOBER 12 LIMIT RIGHTS

• produce specials •

fresh western
iceberg lettuce
3 HEADS **\$1.00**

sweet thompson
seedless grapes
lb. **59¢**

new crop green cabbage lb. **19¢**
sugar hubbard squash lb. **10¢**
baking potatoes no. 1 premium lb. **39¢**

fresh mushrooms lb. **1.39**
california cantaloupe sweet lb. **29¢**
caramel apples ea. **39¢**

• delicatessen •

PHILADELPHIA Cream Cheese

plain, chive or pimento

kraft, 3-oz. **4/\$1**

KRAFT
american cheese stack pack singles, 1-lb. **\$1.99**

IMO
chive topping 16-oz. **59¢**

KRAFT
sharp cheddar Shredded, 8-oz. **\$1.37**

• coupon savings •



• dairy specials •

DARIGOLD Yogurt

many flavors
8-oz. **4/\$1**

DARIGOLD
nutrish milk 1/2-gal. **84¢**

DARIGOLD
gourmet ice cream qts. **99¢**

DARIGOLD
buttermilk qts. **44¢**

• grocery specials •

Strictly fresh
"AA" Large Eggs
dozen **64¢**

WESTERN FAMILY
orange juice unsweetened, 46-oz. **89¢**
WESTERN FAMILY
pork & beans 15 1/2-oz. **3/\$1**
WESTERN FAMILY
stewed tomatoes 16-oz. **45¢**
WESTERN FAMILY
yellow popcorn 2-lb. **59¢**

JIF Peanut Butter

creamy, ex crunchy
40-oz. **\$2.59**

CRISCO
salad oil 24-oz. **\$1.29**
Chef Boy-ar-dee
Beefaroni 15-oz. **\$69¢**
Chef Boy-ar-dee
Mini Bites Ravioli 15-oz. **69¢**
Chef Boy-ar-dee
Beef Ravioli 15-oz. **69¢**

WESTERN FAMILY
Macaroni & Cheese
dinner 7.25-oz. **4/\$1**

SPAM
luncheon meat regular or smoke flavor, 12-oz. **\$1.39**
BETTY CROCKER
hamburger helper several varieties, 6 1/2-8-oz. **89¢**
MISSION
elbow macaroni or long spaghetti, 22-oz. **83¢**
BIG G
cheerios 15-oz. **\$1.37**

TOP RAMEN Flavored Noodles

four flavors
3-oz. **5/\$1**

MJB
long grain rice 42-oz. **\$1.59**

HEFTY
trash bags 2 ply, 30/33 gal. **\$3.59**

HEFTY
kitchen bags tall, 15/11 gal. **\$1.39**

HEFTY
clean-up bags lawn, 5/48 gal. **\$1.39**

WESTERN SHORES Facial Tissue

2 ply white, assorted
200-ct. **49¢**

Pepsi-Cola
or
Seven-Up

SAVE 80¢

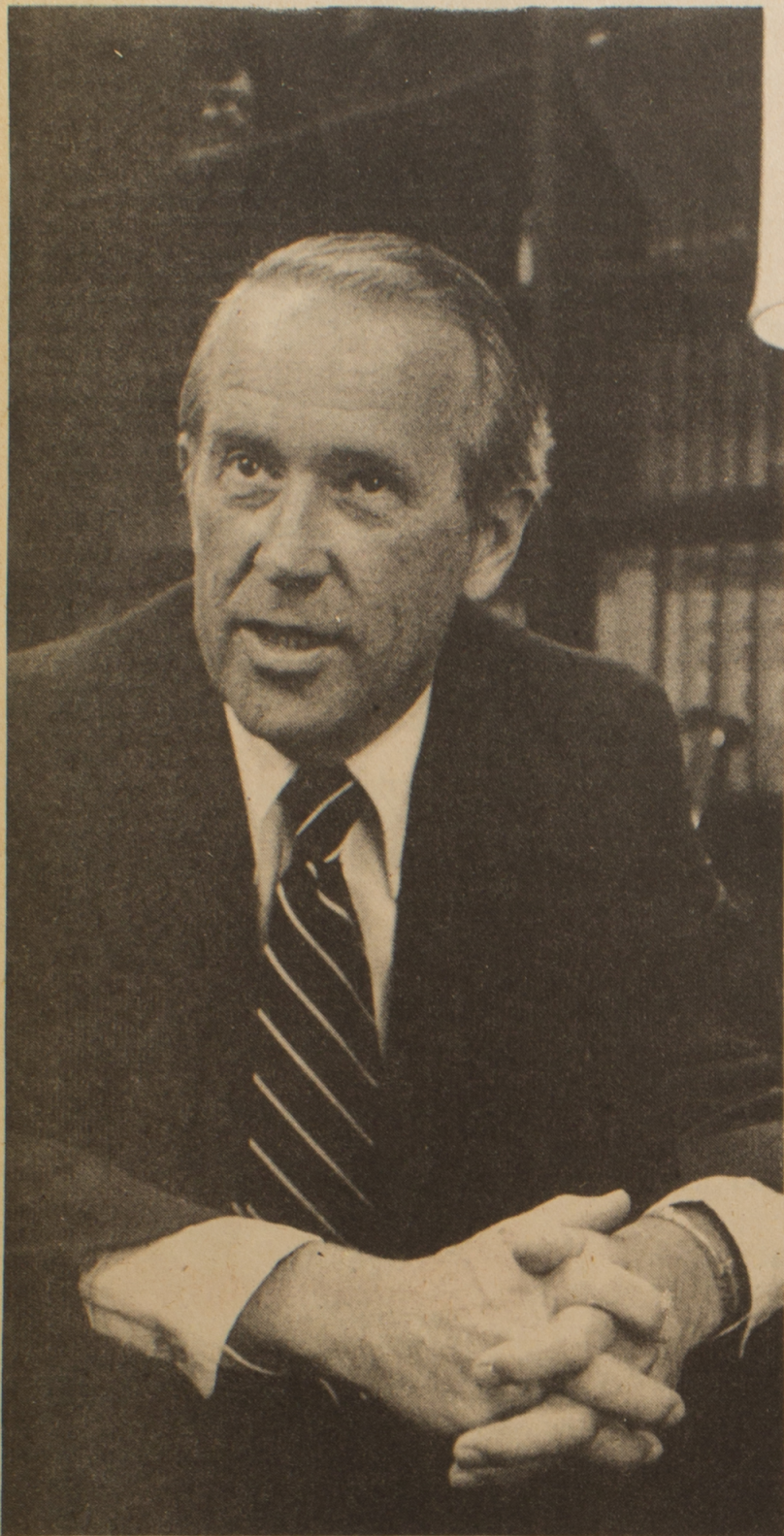
16-oz. six pack no-return bottles

\$1.49

with coupon

Expires 12 Oct. '80

Limit 4



U.S. Senator Henry M. Jackson, pictured in his Washington, D.C., office by a News-Times photographer, will speak at a special breakfast sponsored by the North Whidbey Chamber of Commerce. It is scheduled for the Empire Room of the King's Table at 7:30 a.m., Oct. 14, and attendance is limited to Chamber members only on a first-come, first-served basis and advance reservations are required. Jackson will also appear at a coffee hour open to the general public and set for 9:30 to 11 a.m. in the Community Room of Whidbey Federal Credit Union following the breakfast. Jackson will speak on the economy, energy and national defense during his Oak Harbor appearance. The limit on breakfast attendance results from the 90-person capacity. As a result, the coffee hour was arranged by non-partisans within the Chamber to provide those unable to attend the breakfast an opportunity to meet with Jackson. Price for the breakfast is \$5.00 per person. The coffee hour is free.

In 1957, Mercedes-Benz was a worldwide giant and virtually unknown in America.

Today, Sachs-Dolmar is in a similar position. Though they sell their precision chain saws in 100 countries around the world, they are new to America.

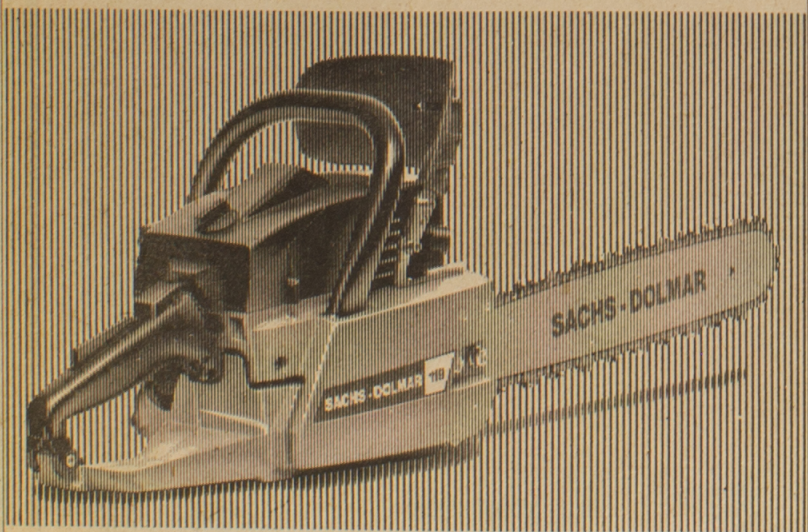
We are proud to be one of the first Sachs-Dolmar dealers.

Come visit us and see these impressive, German engineering masterpieces in person. From lightweight to heavy-duty professional models.

They are the smoothest, most rugged saws we have ever seen. It may have taken them 50

years to come to town, but it was worth the wait.

**SACHS
DOLMAR**



After 50 years
and 100 countries,
Sachs-Dolmar
comes to town.

NEW STORE HOURS START MON., OCT. 6
Tues.-Fri. 9-6; Sat. 9-4, CLOSED MONDAY

ISLAND HONDA

675-7117 or 675-4476
8022 80th N.W., Corner Hwy. 20 and Pioneer Way



GET THE MILEAGE OF AN IMPORT, WITHOUT HAVING TO DRIVE ONE

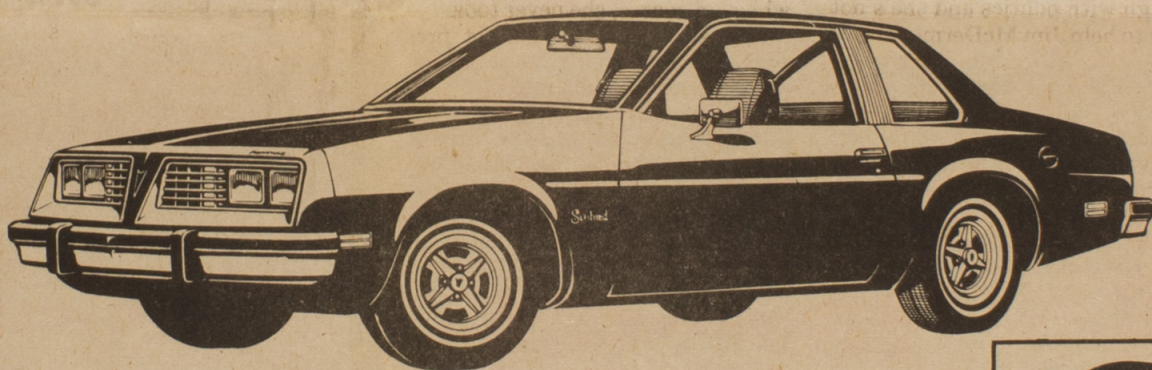
1980 CITATION STK. NO. C0204
1980 CITATION STK. NO. C0228
1980 CITATION STK. NO. C0229
1980 PHOENIX STK. NO. P0082

GM
"X" CARS
REDUCED
\$517⁵² EACH
1980
"CAR OF THE YEAR"



FRONT-WHEEL DRIVE
NEVER HAD IT SO GOOD

SPORTY PONTIAC SUNBIRD



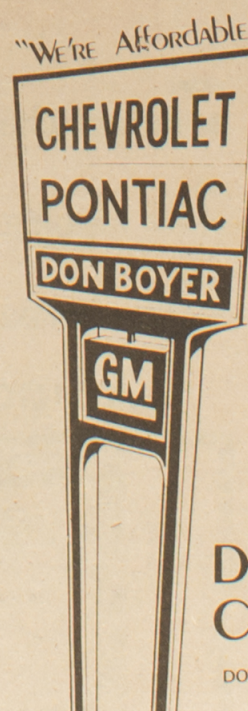
DO YOU WANT
YOUR FAMILY IN
SOMETHING SAFER
THAN A FOREIGN CAR?
CHECK THE NHTSA
BARRIER TESTS.

**BIGGER THAN A RABBIT
BUT EATS LESS!**

DEMONSTRATOR DISCOUNT

*Discounts deducted from suggested retail posted price.

1980 BONNEVILLE 4-Door	SAVE \$1899 ²³
Stock No. P014.....	
1980 BONNEVILLE 4-Door	SAVE \$2323 ³⁵
Stock No. P019.....	
1980 BONNEVILLE 4-Door	SAVE \$2159 ⁴⁸
Stock No. P029.....	
1980 CAPRICE CLASSIC 4-Door	SAVE \$2329 ⁹²
Stock No. C028.....	
1980 MONTE CARLO Coupe	SAVE \$1218 ⁹⁰
Stock No. C037.....	
1980 CHEVROLET SUBURBAN	SAVE \$2506 ¹⁹
Stock No. T004.....	
1980 DIESEL 1/2 TON PICKUP	SAVE \$2136 ¹⁵
Stock No. T057.....	
1980 CITATION X-11 Coupe	SAVE \$ 563 ⁶⁰
Stock No. C0190.....	
1980 CAPRICE CLASSIC Sta. Wagon	SAVE \$1805 ²¹
Stock No. C017.....	
1980 IMPALA 4-Door Sedan	SAVE \$1815 ⁰⁹
Stock No. C029.....	
1980 IMPALA Coupe	SAVE \$1500 ⁴⁷
Stock No. C0200.....	



**CHEVY CHEVETTE.
AMERICA'S BEST-SELLING
SMALL CAR.**

The 1981 Chevette has the highest EPA mileage estimate of any Chevrolet. Plus a long list of standards including reclining front bucket seats*, 1.6 Liter 4 cyl. engine and more. Chevy Chevette's up ahead for '81. *Except Scooter

30

EPA EST. MPG

39

EST. HWY.

**DON BOYER, INC.
CHEVROLET-PONTIAC**

DOWNTOWN OAK HARBOR 675-6604

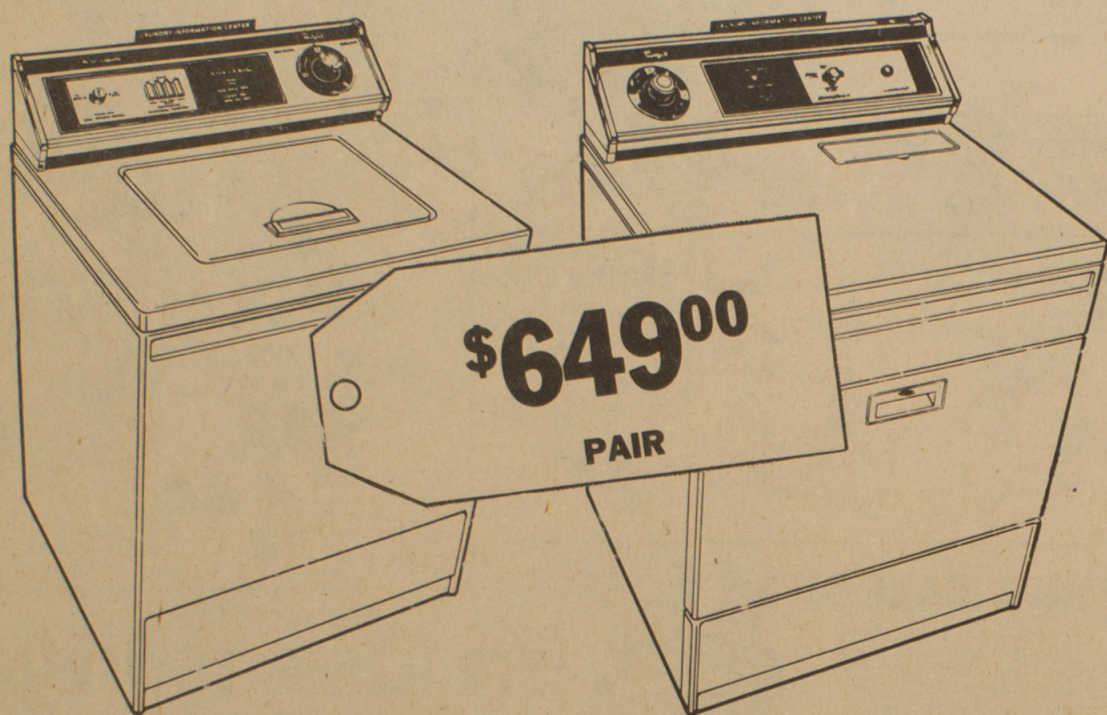
STORE HOURS:
OPEN 9 A.M.-5:30 P.M.
MONDAY THRU SATURDAY
1164 Midway Blvd 675-4392

BROADVIEW APPLIANCE'S 7TH ANNUAL

Fall Sale



Whirlpool[®] SPECIAL



WASHER
Model LHA7680

DRYER
Model LHE5800

- Double-duty Super SURGILATOR[®] agitator
- Washes up to 18 lbs. of heavy denim and twill garments*
- 4 cycles: NORMAL, GENTLE, PERM. PRESS and KNIT
- 2 wash and 2 spin speeds
- Energy-saving water temp selector with 4 pushbutton wash/rinse combinations

- MAGIC CLEAN[®] self-cleaning filter**
- 4 level water-saving load-size selector
- Agitator-mounted fabric softener dispenser
- Bleach dispenser
- Automatic cool-down care for Perm. Press fabrics
- Porcelain-enameled top and lid
- Bac-Pak Laundry Information Center

- Custom Dry Control
- Special cool-down care for Perm. Press and Knit fabrics
- 3 drying temp settings
- Full-width hamper-type door

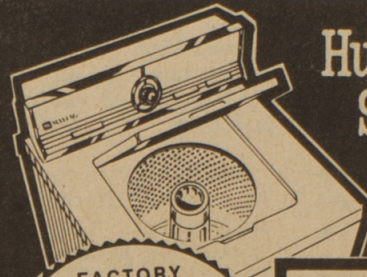
- Large 5.9 cu. ft. drying drum
- Extra-large lint screen
- Push-to-start button
- Automatic door shut off
- Bac-Pak Laundry Information Center

Factory Authorized Close-Out on MAYTAG

DISCONTINUED MODEL

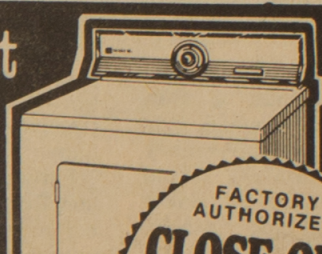
Washers and Dryers

NEW MODELS ARE HERE! Every discontinued washer and dryer at special close-out prices. Maytag Jetclean[™] Dishwashers are also offered at SPECIAL SAVINGS!!



Hurry For Best
Selection.

STARTS
(DATE)



FACTORY
AUTHORIZED
**CLOSE-OUT
SAVE**
FROM
\$30-\$60

FACTORY
AUTHORIZED
**CLOSE-OUT
SAVE**
FROM
\$30-\$60

SPECIAL SAVINGS on Maytag Jetclean[™] Dishwashers

- Outcleans 'em all on the dual wash regular cycle • Energy Saver Drying cycle circulates air without heat • Metered fill • Self-cleaning Micro-Mesh[™] filter • Three level Jet-wash system

**SPECIAL
SAVINGS!
SALE**
FROM
\$30-\$60

MAYTAG HEAVY DUTY WASHERS

#1 length of life & fewest repairs. Nations #1 preferred washer (Based on a national survey asking consumers which brand of washer they'd like to own) • No other like-size top-loading automatic washer uses less total water than Maytag.

MAYTAG BIG LOAD DRYERS
• Commercially Proven • Energy Efficient • Choose from Electronic, Auto-Dry and Time Controls • Gentle low temp drying for all types of dryable fabrics

Nobody
Builds 'em like
Maytag!



Hotpoint SAVE \$50

**BIG CAPACITY
17.2 CU. FT.
REFRIGERATOR
FREEZER**



CTF17P

- *Special energy efficient model
- *Frost Free *Adjustable Shelves
- *Equipped for optional automatic icemaker

just **\$489**

FREE

Rotisserie (a \$40 value)
with retail purchase
on Jenn-Air

Jenn-Air's "Convertible
Cooktop" for whatever
you cook

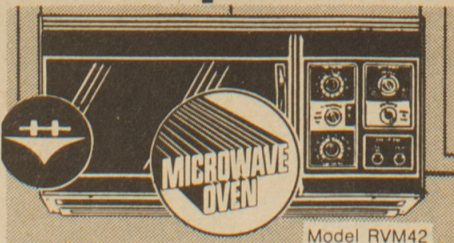
Broil
Grill
Griddle
Rotiss
Shish kebab
Deep-fry



JENN-AIR
VAV

The incredibly versatile Jenn-Air grill-range lets you do it all and brings the flavor of "outdoor cookery" indoors! See it for yourself... it can make every meal more flavorful and a lot more fun!

Hotpoint

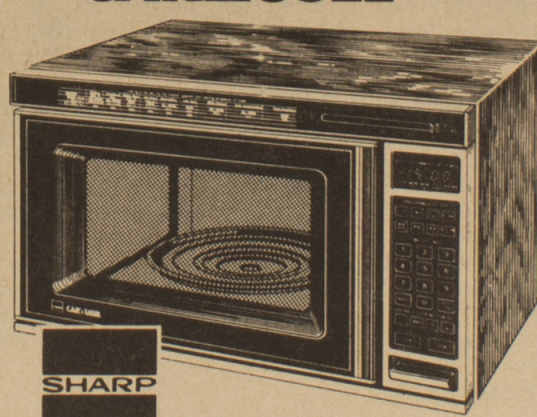


Model RVM42

**NEW HOTPOINT COUNTER SAVER[™]
MICROWAVE OVEN
INSTALLS ABOVE
YOUR PRESENT RANGE**

- Installs easily under cabinets.
- Built-in exhaust fan and light.
- Extra-wide 16" oven interior.
- Cooks by time or temperature.

CAROUSEL[™]



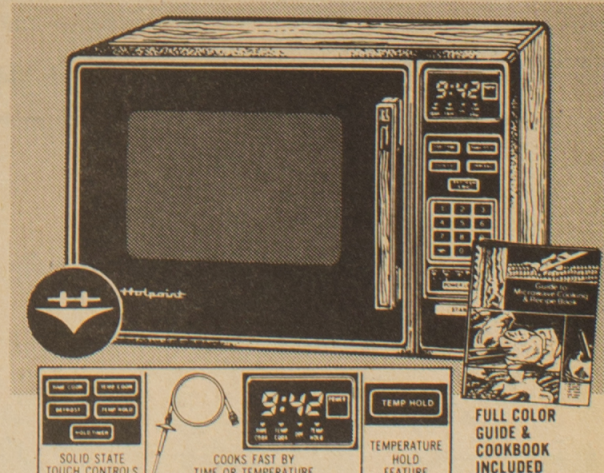
R9310

- ★ Carousel Turntable
- ★ Auto-Touch
- ★ Variable Cooking Control
- ★ Memory Banks
- ★ Auto Start
- ★ Lighted Digital Display
- ★ Custom Defrost
- ★ Time of Day Clock and Minute Timer
- ★ Woodgrained Cabinet
- ★ Energy Savings
- ★ Carousel Cookbook

\$469

Hotpoint COOK & HOLD!

COOKS & KEEPS FOOD
READY TO EAT—WHEN YOU ARE!



Deluxe microwave with large 1.3 cu. ft. capacity □ 10 Power levels with indicator lights □ Cook and Hold feature □ Handsome black glass front. Model RE942Y

just **\$399**

FREE TURKEY WITH PURCHASE OF
ANY MICROWAVE

BROADVIEW Appliance

Sales & Service

CORNER HWY. 20 AND 350th WEST

675-5020