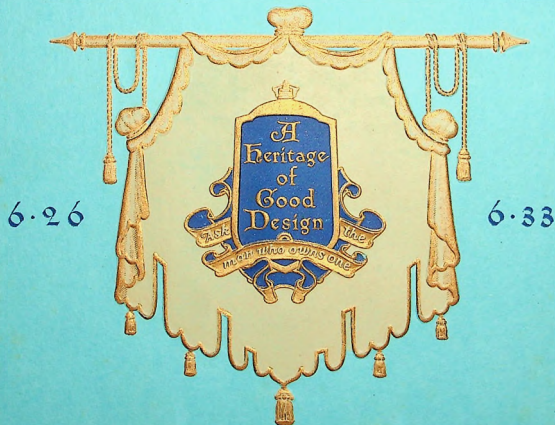


# THE PACKARD EIGHT



6.26

6.33

## STANDARD MODELS



*"The walls must get the  
weather stain before they  
grow the ivy" - And so  
with motor cars -*

*The Packard Door-  
way, ivy-covered, typifies  
Packard's thirty years  
of experience in building  
fine motor cars and  
in making possible a  
Heritage of Good  
Design -*

*"The walls must get the weather stain before they grow the ivy."*

ILLUSTRATION BY ROBERT B. BROWN

# THE PACKARD STANDARD EIGHT

## Ten Body Types

### 6-26

THE SEDAN , Five Passengers  
THE CONVERTIBLE COUPE , Two Passengers  
THE COUPE , Two Passengers

### 6-33

THE COUPE , Four Passengers  
THE CLUB SEDAN , Five Passengers  
THE SEDAN , Seven Passengers  
THE SEDAN-LIMOUSINE , Seven Passengers  
THE RUNABOUT , Two Passengers  
THE PHAETON , Five Passengers  
THE TOURING , Seven Passengers



## Models Illustrated

### 6-26

THE SEDAN , Plate One  
THE CONVERTIBLE COUPE , Plate Two  
THE COUPE , Plate Three

### 6-33

THE COUPE , Plate Four  
THE CLUB SEDAN , Plate Five  
THE SEDAN , Plate Six  
THE SEDAN-LIMOUSINE , Plate Seven  
THE RUNABOUT , Plate Eight  
THE PHAETON , Plate Nine  
THE TOURING , Plate Ten

*Please refer to last page of Mechanical Features section for specifications concerning Standard Equipment*

**PACKARD MOTOR CAR COMPANY , DETROIT**

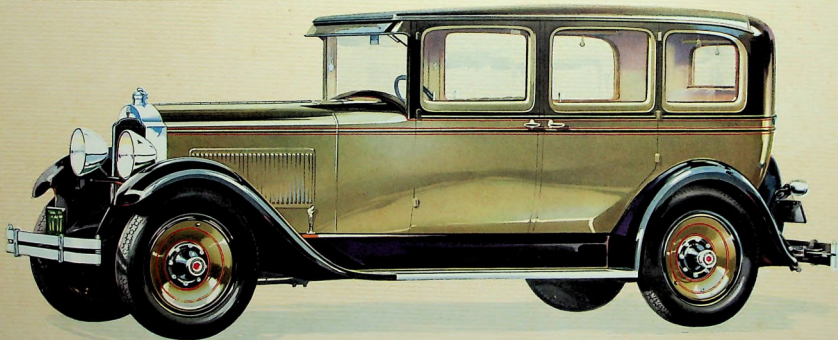
*Copyright 1928*

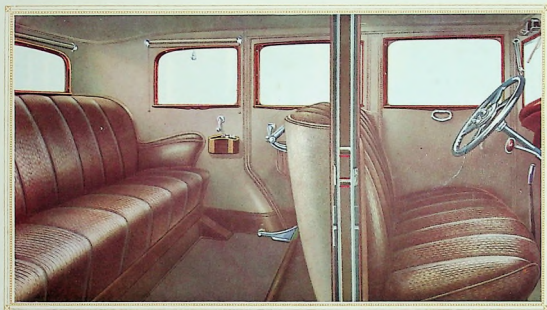






The Packard Standard Eight  
The Sedan  
Five Passengers





### THE PACKARD STANDARD EIGHT 6-26

*Interior of the Sedan • Five Passengers*

THE five-passenger sedan is the ideal family car and has long been the most popular of all Packard models. And in it, as in all new Packard Eight cars, the comfort and safety advantages of the ex-

clusive Packard shock-absorbing system have been added to by the use of the finest in upholstery material, including luxury-type springs and the liberal use of genuine curled hair in the cushions.

A HERITAGE



OF GOOD DESIGN

