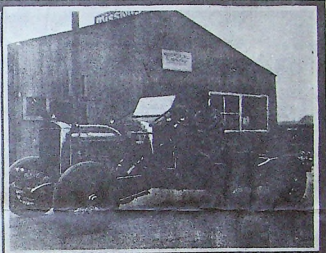
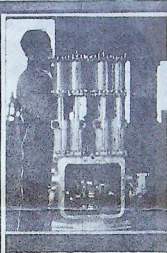
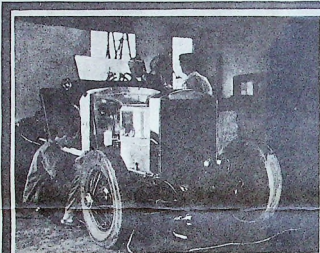


RECENT ACTIVITIES AT DOBLE PLANT SHOWN IN PICTURES



PLANT CONTINUES CAR PRODUCTION

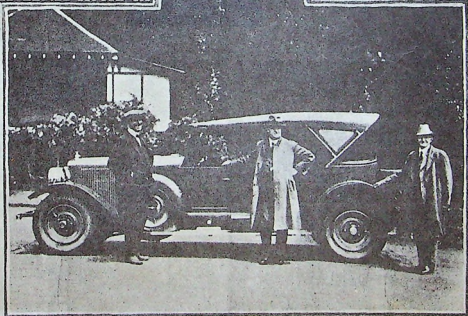
Operation of Doble Factory
At Emeryville Under Way
With Reduced Force

WITH a reduced crew manning each department, the Emeryville factory of the Doble Steam Motors Corporation is in continuous operation, turning out one completed De Luxe steam motor car every four weeks, pending new financing in the East or a settlement of the various legal actions before the courts of California, in which the company is involved.

This status has been maintained practically without change for the past eight months, caused by the necessity of the Doble Corporation to conserve its funds. Despite the entanglements precipitated by the suits launched against the enterprise, the evident desire of which has been to cause the factory to suspend, not a single day, has been lost, and with the exception of nights, Sundays and legal holidays, the machinery has not once been closed down.

President In East

Abner Doble, president of the corporation, is still in the East, where he is working on plans providing for the future financing of the company. As published previously, several De Luxe models of the Doble steam car are being demonstrated to interested groups and persons of high standing in the automotive world who are seriously interested in the prospect of be-



THE FOUR-CYLINDER DOBLE STEAM CAR, recently imported to New Zealand from California by Mr. Edwin Atkinson, 10 Princes Street, Auckland, who is the sole New Zealand distributor of this ingenious and luxuriously appointed means of propulsion. Standing in front of car, from left, are Messrs. George Henning, Arthur Cleave and Edwin Atkinson.

Upper left—the camera caught several Doble mechanics putting the final touches to a steam car chassis, while in the upper center the same is happening to a Doble engine. At upper right is shown a chassis just about to depart under its own power for the Murphy Body Works at Pasadena with Warren Doble at the wheel. The lower picture is taken from a New Zealand magazine.

ENGINEERS REVEAL
NEW DOBLE DEVICE

Blue Flame Burner Perfected
At Laboratory of Plant
At Emeryville

SOME months ago Warren Doble, vice-president of the Doble Steam Motors Corporation, and engineer in charge of research and experimental work at the Emeryville plant of that company, announced that his department had practically perfected an invention of the utmost importance to the steam automobile industry, almost ranking in achievement with the original Doble steam generator.

At that time it was planned to announce the details of this invention in the following month's issue of the Industrial Review, allowing time for the protection of the invention through application for patents. Unfortunately, however, the announcement could not be made as planned owing to the fact that it was necessary to secure a number of additional patents to provide for complete protection, all of which occupied more time than was originally estimated.

Patents Secured

The majority of the patent arrangements have now been completed and several days ago Mr. Warren Doble felt at liberty to announce that the new invention is a blue flame burner, destined in time to replace the present

DOBLE STEAMERS TEXAN PURCHASES DOBLE CASE IN

WITH a reduced crew manning each department, the Emeryville factory of the Doble Steam Motors Corporation, turning out one completed De Luxe steam motor every four weeks, pending the outcome of the various legal actions in the various legal actions of the courts of California, in which the company is involved.

This status has been maintained practically without change for the past eight months, caused by the necessity of the Doble Corporation to conserve its funds. Despite the entanglements precipitated by the suits launched against the enterprise, the evolution of which has been to cause the factory to suspend, not a single day, its normal production of steam motors at night, Sundays and legal holidays, the machinery has not once been closed.

President In East

Abner Doble, president of the corporation, is still in the East, where he is working on plans providing for the future financing of the enterprise. As published previously, several De Luxe models of the Doble steam car have been demonstrated to interested groups and persons of high standing in the automotive world who are seriously studying the project of becoming identified with and furthering the plans of the Doble enterprise.

While the trend of these negotiations is necessarily slow, due to the importance and magnitude of the financial consideration, Mr. Doble declared in a recent letter to the *Industrial Review* that matters were approaching a climax, which he was very inclined to believe will prove successful.

Indicating the importance being accorded the negotiations under consideration, the interested parties is having a Doble car operated by a series of different engineers of high standing in the motor industry, each engineer takes over the car for a certain period of time and drives it, then he then he is required to state to whatever test he believes will best reveal its operating capabilities. In the past series of these reports will be rendered, calculated to reveal the true character of the machine from different viewpoints and angles. Another interested party has been sufficiently impressed with the merits of the car to brief examination, to purchase a \$11,000 Doble for his private use and further examination.

Should the negotiations prove successful, it is confidently expected that the financial considerations will be entered into to guarantee the future of the project once and for all, and sweep away all remaining doubts.

Production Continues

By providing for the operation of the factory with a reduced force, the corporation has been able to continue the production of De Luxe cars without any expenditure of extra sums for additional inventory. In addition, through this program it has avoided the possibility of the factory being forced to close down for even a temporary period, which would have occasioned a moral, if not a physical loss to the corporation and its stockholders.

At the present time there is on hand at the Emeryville factory completed and in progress of completion over 20 machines, together with frames and raw materials for 60 more. Including the automobiles recently disposed

THE FOUR-CYLINDER DOBLE STEAM CAR, recently imported to New Zealand from California by Mr. Edwin Aikman, 10 Prince Street, Auckland, who is the sole New Zealand distributor, of this ingenious and thoroughly approved means of propulsion. Standing in front of car, from left, are Messrs. George Henning, Arthur Clave and Edwin Aikman.

Upper left—the camera caught several Doble mechanics putting the final touches to a steam car chassis, while in the upper right is shown a chassis just about to depart under its own power for the Murphy Body Works at Pasadena with Warren Doble at the wheel. The lower picture is taken from a New Zealand magazine.

DOBLE STEAMERS FIND READY SALE

Three De Luxe Models Are
Purchased by Private
Motoring Firms

TEXAN PURCHASES SECOND STEAM CAR

Millionaire Motorist Has
Many Gas Machines but
Prefers Doble

IN addition to several machines constructed for demonstration purposes, three Doble De Luxe steam motor cars have been completed recently for private purchasers at the Emeryville plant of the Doble Steam Motors Corporation.

These machines, now in the hands of their new owners, were a seven-seater De Luxe touring car acquired by Julius Butler, wealthy private mill operator of Chicago; a De Luxe sedan for the late J. Howard Hughes, Houston, Texas, and a De Luxe sedan for a prominent figure in the automotive industry who does not desire his name announced at this time.

All the cars above referred to were constructed at the Emeryville plant in the past few months under the operation of the economy program now in force. The demonstration machines, Standard Doble models in every particular, were shipped East to be tested by several groups of capitalists with whom Abner Doble, president of the corporation, is negotiating for the enterprise.

By not including the cars under assembly or construction, the Emeryville plant has made time for the construction of 24 Doble De Luxe models.

Despite the retarded operation of the research laboratory has continued its endeavors uninterrupted under Warren Doble, engineer in charge. At the present time it is centering its efforts on the perfection of the blue flame burner as well as a number of other research problems in connection with the Doble project. The results of this research have been apparent in the 1925 model of the Doble, plans and specifications for which are being rapidly completed.

AFTER having driven his Doble sport roadster for several months and thoroughly tested its efficiency and operating capabilities, Howard Hughes, millionaire Texan, was so satisfied with his initial purchase that he ordered a second Doble De Luxe steam car, which was delivered to him several weeks ago.

Like his original Doble steamer, acquired last April, Mr. Hughes' second purchase was also a sport roadster, the only difference being that the latter car is equipped with a permanent top. A photograph of the first machine will be found reproduced in this issue.

Owens Foreign Cars

A motoring fan for many years, Mr. Hughes is an exceptional person to judge the efficiency and value of the best in automobiles, as he also owns and drives such well-known foreign cars as the Rolls-Royce, the Daimler, the Darracq and other Mercedes, admittedly the best of the world in the line of internal combustion manufacturers. The Rolls-Royce and Minerva are English-made cars, while the Mercedes is a German production.

"I know them all, but I prefer the Doble," he said in a brief but sweeping comment of Mr. Hughes on ordering his second roadster. The bodies for both of Mr. Hughes' cars were built by the Murphy Body Works at Pasadena, in accordance with designs prepared by Abner Doble, president of the Doble Steam Motors Corporation, working in conjunction with the Murphy engineers.

First In Texas

Mr. Hughes, whose home is at Houston, Texas, is a son of the president of the Hughes Tool Company. His Doble cars are the first of this make to be sold in that territory.

DOBLE CASE IN SUPREME COURT

Highest State Tribunal To
Rule on Validity of
Indictments

PENDING the presentation of argument before the Supreme Court of California in the appeal of the State Corporation Department from the ruling of the District Court of Appeals, virtually quashing the criminal indictments against the officers of the Doble Steam Motors Corporation, F. G. Cox, Inc., et al., there has been practically no change in the status of these cases during the past six months.

The decision as to whether or not the defendants in these indictments are now liable to face the court in answer to the charges now consistently rendered with the highest state tribunal.

The point made by the District Court of Appeals in its ruling was that no such crime as "conspiracy to violate the Corporate Securities Act" exists in the penal code of California, hence the indictments brought against the defendants on this count were held invalid.

The final decision from the State Supreme Court in this matter is expected in the near future.

Industrial Review, 722 Montgomery Street

Enclosed herewith please find fifty cents (\$1.50) for which please send us the *Industrial Review* for one year (12 issues).

Name _____
Street Address _____
City _____ State _____

SOME months ago Warren Doble, vice-president of the Doble Steam Motors Corporation, and engineer in charge of research and experimental work at the Emeryville plant of that company, announced that his department had practically perfected an invention of the utmost importance to the steam automobile industry, almost ranking in achievement with the original Doble steam generator.

At that time it was planned to announce the details of this invention in the following month's issue of the *Industrial Review*, allowing time for the protection of the invention through application of patents. Unfortunately, however, the announcement could not be made as planned owing to the fact that the company was to secure a number of additional patents to provide for complete protection of which occurred more time than was originally estimated.

Patents Secured

The majority of the patent arrangements have been completed and several days ago Mr. Warren Doble felt at liberty to announce that the invention is a blue flame burner destined in time to replace the present burner utilized in the Doble steam car. The burner of the blue flame has been the object of engineers throughout the world, as this flame gives out a much greater heat, and is much more economical to operate than the so-called red flame. One of the greatest difficulties in this regard has been to secure proper combustion, a problem which the Doble engineers are now determined to have overcome.

In this case the blue and smaller flame burner and generator for the lower grade applications are lighter and smaller than the present apparatus. Using one spark-plug instead of two, the new burner appears in size, this new burner will be considerably cheaper to manufacture than the old one, owing to the fewer materials used.

Fewer Parts Used

While the present Doble generator is comparatively simple when contrasted with the present standard, the new burner will be even less complicated, thus effecting an additional saving in the cost of the engine.

In addition to these points, the new burner is also capable of using the lower grade applications of fuel, and consequently considerably cheaper to operate. Despite the lower grade fuel, the new burner will operate at a full head of steam as fast, if not a trifle faster, than the Doble standard, while the tremendous heat will keep the steam at a higher superheated temperature, thus making it a more efficient propulsive medium.

Taking the new device on the whole, its perfection is of the utmost importance to both the Doble enterprise and the steam automobile industry.

(Continued on page 4, col 1.)