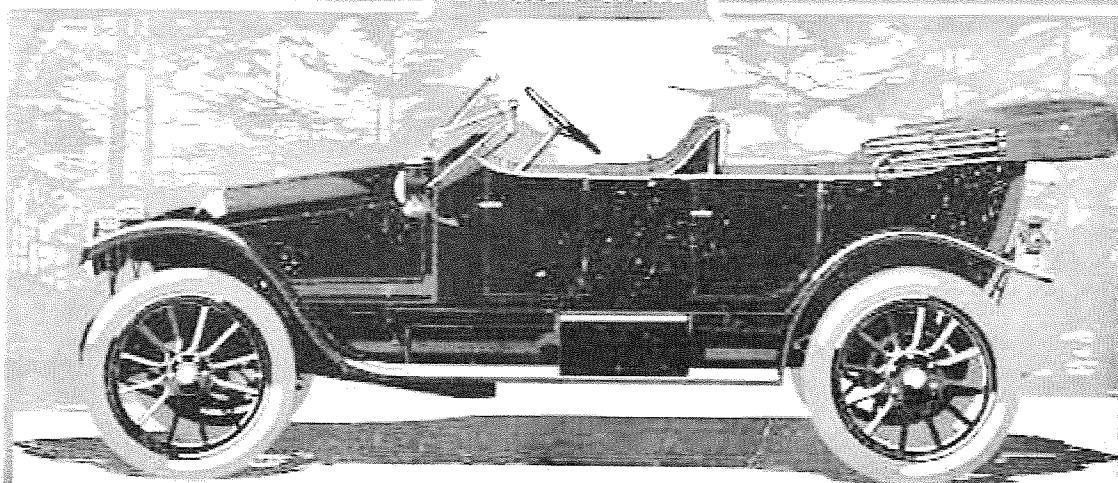


# Franklin



## Franklin Big Six, Thirty-Eight

*The "Big Brother" of The Little Six*

**Fastest touring car over all roads. Big, silent, luxurious. Costs less to maintain than the average 4-cylinder car of much less horse-power. As able as any heavy car of twice the horse-power. Five-passenger Touring; Four-passenger Torpedo Phaeton, Price, \$3,600.**

As a man of affairs you will be particularly interested in knowing why the Franklin has stuck so consistently to its distinctive principles of construction—direct, air cooling, light weight, full-elliptic springs, wood frame, and large tires.

We have done so because it has been absolutely proven, under all conditions of service by thousands of Franklin owners for eleven years, that these principles are directly responsible for the unusual results obtained from Franklin cars.

For example: Franklin cars use less gasoline, averaging from 20 per cent to 35 per cent greater mileage per gallon. This is the result of the exceptional efficiency of the Franklin direct-air-cooled motor. Franklin cars average from 400 to 600 miles and more per gallon of oil without smoke. This is due to the Franklin re-circulating oiling system. Franklin cars use fewer tires. This is the result of light weight on large tires, and because the tires are not pounded by rigid, unyielding construction. Franklin cars travel faster in the long run, ride easier, and last longer because of the shock-absorbing properties of the full-elliptic springs, resilient wood frame, and flexible drive system.

These principles are explained more fully and Franklin construction is analyzed point by point in a simple, non-technical way, in a book recently written by our engineers, entitled "An Analysis of Franklin Motor Car Construction." We will be glad to send this book, together with our catalogue, to any one who is seriously considering the purchase of a car of Franklin quality.

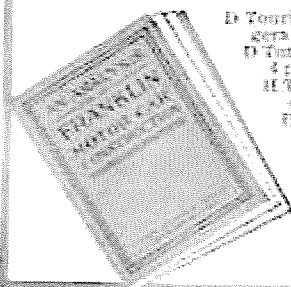
### THE FRANKLIN LINE

D Touring, 6-cylinder, 30 H. P., 5 passengers	\$3,600	M Little Six, Thirty, Touring, 5 passengers	\$2,500
D Torpedo phaeton, 6-cylinder, 30 H. P., 4 passengers	\$3,600	M Little Six, Thirty, Victoria phaeton, 2 passengers	\$2,500
H Touring, 6-cylinder, 26 H. P., 7 passengers	\$3,250	G Touring, 4-cylinder, 25 H. P., 5 passengers	\$2,000
H Limousine, 6-cylinder, 30 H. P., 7 passengers	\$4,250	G Runabout, 4-cylinder, 18 H. P., 2 passengers	\$1,450

The Six-cylinder models equipped with Extra Electric Starter and Lighting System—A real starter with really original features.

**FRANKLIN AUTOMOBILE COMPANY**

17 Franklin Square, Syracuse, N. Y.



"Mention the Geographic—It identifies you."