

11-27
CATALOGUE AND DESCRIPTION

..of..

Stanley

Steam Cars ————— Season 1907

A. K. STORY
REVERLY, MASS

STANLEY STEAM CARS

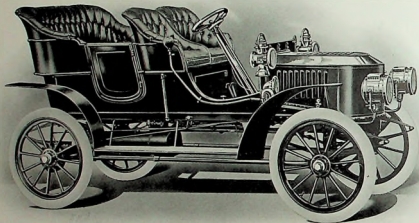
WITH 1907, we shall complete ten years of automobile manufacturing. Our aim throughout this period has been to produce the best automobile value in the entire world. To achieve this end, it has been necessary to deliver the maximum speed, the maximum efficiency, and the maximum simplicity, at the minimum cost. As for speed and efficiency, we are producing a Touring Car, for instance, for \$1,500, which cannot be matched by any gasoline car for less than three or four times that price. And its simplicity is proven by the fact that 75% of these Touring Cars are in the hands of their owners without the aid of hired chauffeurs.

Although 1906 was our best and busiest year, we have on our books now (January 1st, 1907) three times as many orders as we had a year ago; and we have never spent a dollar in advertising, and have never asked anyone to buy one of our cars.

STANLEY MOTOR CARRIAGE COMPANY,

Newton, Mass.

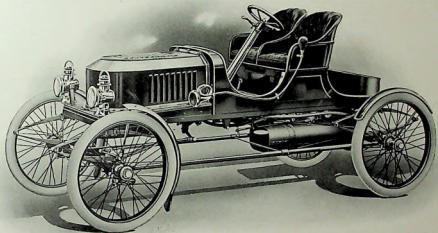
S T A N L E Y S T E A M C A R



MODEL F Side Entrance Touring Car, seating five. Wheel steer. Divided front seat. Gauge lamp. Throttle and by-pass lever sub-imposed on steering wheel. Artillery wheels, 34 x 3½ inch tires. Wheel base, 100 inches; track, 54 inches. 23-inch boiler and burner in front, under hood. 3½ x 5 inch engine. Full elliptical springs. Gasolene capacity (tank at extreme rear), 150 miles. Water capacity (tank under front seat), 40 to 50 miles. Internal expanding hub-brakes, in addition to band-brakes on driving gear. Oil lamps and horn. Ironed for top. Cape top, \$85 additional. 20 H. P.

Price, \$1,500

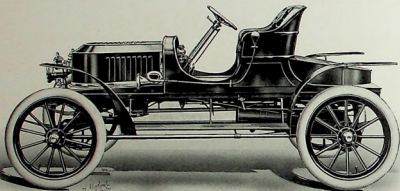
S T A N L E Y S T E A M C A R



MODEL H4 Gentlemen's Speedy Roadster, seating two. Wheel steer. Divided seat. Gauge lamp. Throttle and by-pass lever sub-imposed on steering wheel. Gasolene capacity (tank at extreme rear), 150 miles. Water capacity, 50 to 60 miles. Wire wheels, 34 x 3 inch tires. Wheel base, 100 inches; track, 54 inches. Full elliptical springs. 23-inch boiler and burner in front, under hood. 3½ x 5 inch engine. (Same power-plant as in Model F.) 20 H. P. Oil lamps and horn.

Price, \$1,200

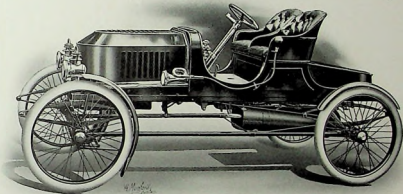
S T A N L E Y S T E A M C A R



MODEL H5 Gentlemen's Speedy Roadster, or Fast Touring Car, seating two. Wheel steer. Divided seat. Gauge lamp. Throttle and by-pass lever sub-imposed on steering wheel. Gasoline capacity (tank at extreme rear), 150 miles. Water capacity, 50 to 60 miles. Antillery wheels, 34 x 3½ inch tires. Wheel base, 100 inches; track, 54 inches. Running boards and large mud guards. Full elliptical springs. 23-inch boiler and burner in front, under hood. 3½ x 5 inch engine. Internal expanding hub-brakes, in addition to band-brakes on driving gear. (This car is similar to Model H4, except as to wheels, tires, mud guards, and brakes.) 20 H. P.

Price, \$1,350

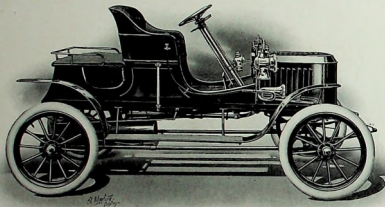
S T A N L E Y S T E A M C A R



MODEL K Semi-Racer, seating two. Wheel steer. Divided seat. Gauge lamp. Throttle and by-pass lever sub-imposed on steering wheel. Gasolene capacity (tank at extreme rear), 150 miles. Water capacity, 50 to 60 miles. Wire wheels, 34 x 3 inch tires. Wheel base, 100 inches; track, 54 inches. Full elliptical springs. 26-inch boiler and burner in front, under hood. 3½ x 5 inch engine. Oil lamps and horn. 25 H.P.

Price, \$1,500

S T A N L E Y S T E A M C A R



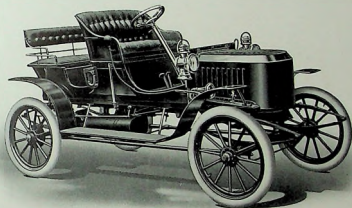
MODEL EX

Rear Seat Closed

Runabout, seating two to four. Wheel steer. Throttle and by-pass lever sub-imposed on steering wheel. Gauge lamp. Sliding rear seat, with collapsible back. Artillery wheels, 30 x 3 inch tires. Wheel base, 90 inches; track, 54 inches. Running boards and large mud guards. Full elliptical springs. Internal expanding hub-brakes in addition to band-brakes on driving gear. Gasolene capacity (tank at extreme rear), 150 miles. Water capacity (tank under seat), 40 to 50 miles. 18-inch boiler and burner in front, under hood. 3 x 4 inch engine. Oil lamps and horn. 10 H.P.

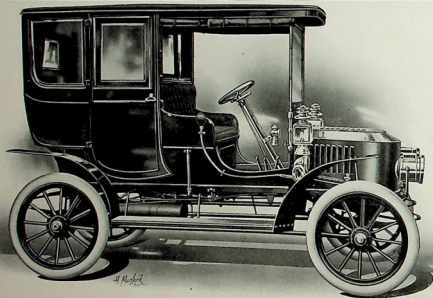
Price, \$850

S T A N L E Y S T E A M C A R



MODEL EX *Rear Seat Open*

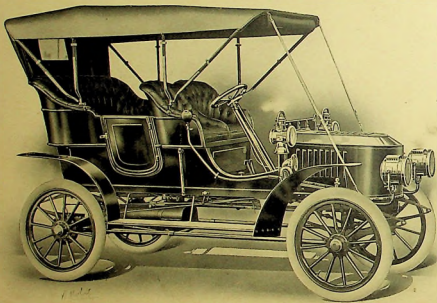
S T A N L E Y S T E A M C A R



MODEL J Limousine, seating five. Wheel steer. Gauge lamp. Throttle and by-pass lever sub-imposed on steering wheel. Artillery wheels. 34 x 4 inch tires. Wheel base, 100 inches; track, 54 inches. Gasolene capacity (tank at extreme rear), 150 miles. Water capacity (tank under front seat), 40 to 50 miles. Full elliptical springs. Internal expanding hub-brakes, in addition to band-brakes on driving gear. 23-inch boiler and burner in front, under hood. $3\frac{3}{8}$ x 5 inch engine. Oil lamps and horn. 20 H. P.

Price, \$2,500

A. K. STORY
BEVERLY, MASS



The Barta Press, Boston

750
1107