

# Belgium Joins France In Demand That Hitler Must Remove Troops

## Suspended Policeman's Trial Ends

Jury Out for Six Hours  
Before Reaching Verdict in Case

REPORTS AT 11:22

Taking of Testimony Had  
Required More Than  
Two Weeks

A jury in Judge H. E. Stafford's court of the circuit court at 11:22 p.m. yesterday found James Yung Yung Ching, suspended Honolulu police officer, not guilty of second-degree murder in connection with the death on October 22 of Isaac Sasaki, 24-year-old tailor. The jury in the case was selected and sworn February 20 and the trial began the following day. Prosecution and defense closed last Friday and argument, which began at 9 a.m. yesterday, closed at 12:30 p.

## On Waikiki Honeymoon



MARRIED ON COAST.—B. L. Taylor, Jr., New York stockbroker, came in with Mrs. Taylor on the Monterey yesterday for a honeymoon at Waikiki. They were married recently in Southern California. (Advertiser Photo)

## Pittman Will Favor Death For Mahoe

Attorney General's Opinion Goes to Governor Today

STUDY COMPLETED

Poindexter to Take Case Under Advisement Before Acting

Attorney General Pittman will recommend to Governor Poindexter today that no executive clemency be extended to Mahoe, Wahawa killer, who was convicted of first degree murder and sentenced to hang by Judge Stafford, and that the death warrant should be signed by the chief executive. It was learned from a highly authoritative source yesterday.

## Territorial Dual Wages Held Illegal

Several Hundred Employees Affected by Hodgson Ruling

A drastic step to eliminate the payment of dual salaries in the territorial service was taken yesterday when Joseph V. Hodgson, first deputy attorney general, filed in a formal opinion that persons receiving compensation of more than \$100 per month from the county or other governmental agencies are ineligible to receive any compensation from the Territory.

## Sarrault Insists Treaties Must Be Kept

BERLIN IS SILENT

French Show Keen Disappointment Over London's Attitude

(By RALPH HEINZEN  
(United Press Staff Correspondent))  
PARIS, March 9.—Belgium tonight pledged her fullest support to France's demand for withdrawal of all German troops from the Rhineland even before any negotiations could begin on the crisis precipitated by Germany's defiance of the Locarno and Versailles treaties.

## Germany Gets Bid To Join In Her Own 'Trial'

(United Press by Radio)  
GENEVA, March 9.—Germany was invited today to attend the meeting where her punishment, if any, will be decided upon for violation of the Locarno treaty.

## Eden Declares League Must Decide

URGES RESTRAINT

But Promises Country's Aid in Event of Attack

(United Press by Radio)  
LONDON, March 9.—Great Britain stood tonight as a bulwark against war in Europe.

## Itasca Helps Stricken Isle

Lands Food for Victims of Hurricane

By RAY COLL, JR.

For the first time in the history of the South Seas, a U. S. coast guard vessel landed rations and supplies on a hurricane-swept island where the population was found to be practically without food.

## Woman Dies After Fight

Matron Allegedly Beaten By Waimano Patient

Mrs. Adelaide Clark, 50, a matron at Waimano Home, Pearl City, died yesterday afternoon at the Queen's hospital as the result of a severe beating March 1 at the hands of a 25-year-old inmate of the home, police learned last night.

## Island AAA Jeopardized

Status of Project Funds in Doubt

Status of nine Hawaii projects being carried on with federal aid, and the AAA processing taxes was again in doubt yesterday after receipt of advice from Washington by Dr. O. C. Magistad, director of the Hawaii Agricultural Experiment station.

## Homestead Jobs Delayed

Governor Awaits Ruling On New Salaries

New members of the Hawaiian House of Representatives, appointed by Governor Poindexter to succeed Chairman Curtis P. Iaukea and Commissioner Frank Woolley, will not be selected by the chief executive until the present commission has completed its consideration of salary raises and new positions created at a recent meeting, the governor declared yesterday.

## Spain Sees New Rioting

Nazi Flag Torn Down By Frenzied Reds

(United Press by Radio)  
CADIZ, Spain, March 9.—Communists tonight ripped down the Nazi flag in front of the German consulate in this city following a riotous day in which frenzied Reds marched through southern Spain, burning churches and convents, smashing looting images in the streets and battling troops and police.

## King To Broadcast On Eastern Network

(United Press by Radio)  
WASHINGTON, March 9.—The nation's territories will have their day Wednesday in a radio program featuring Senator Ernest W. Gibson, Rep. Vermont, Delegate Sam King of Hawaii and Commissioner Santiago Iglesias of Puerto Rico.

## Florida City Struck By Freak Tornado

(United Press by Radio)  
MIAMI, Fla., March 9.—A freak tornado today devastated four square miles of the Miami residential district, injuring at least 25 persons and causing heavy property damage.

## Lindbergh Kidnap Law Is Sustained

(United Press by Radio)  
DENVER, March 9.—The United States District Court of Appeals today upheld the constitutionality of the Lindbergh kidnaping law and ruled that Arthur Goetz must die for the kidnaping of a police officer when he transported across a state line during a robbery.

## SPANISH HONEYMOON

(United Press by Radio)  
BARCELONA, Spain, March 9.—With all the flutter of newlyweds, Douglas Fairbanks and his bride, the former Lady Sylvia, arrived here today from Paris to spend a honeymoon in Spain.

## Former Ball Player Runs Against Roosevelt In N. H.

(United Press by Radio)  
CONCORD, New Hampshire, March 9.—New Hampshire voters prepared today to ballot tomorrow in the nation's first presidential primaries.

## Pointdexter Plans Kauai Plane Trip

Governor Poindexter declared that the final decision is up to the commission and that when this question is definitely settled he will make public his selections for Iaukea and Woolley's successors.

## League Action May Cause Germany To Lose Olympiad

(United Press by Radio)  
BERLIN, March 9.—Fate of the Olympic Games, scheduled to be held in Berlin this summer, depends on the outcome of the League of Nations' action in the current crisis, officials admitted tonight.

## Have YOU Made Provision for OLD AGE?

A LIFE INCOME POLICY will pay you an income for life if you live—and will keep your family if you die. They cannot lose it in poor investments. They cannot spend it in unwise ways. Nobody but the family can get it. It is theirs for as long as they live.

## THE MANUFACTURERS LIFE INSURANCE CO.

Established 1887

BRANCH OFFICES IN CANADA, UNITED STATES, GREAT BRITAIN, INDIA, AFRICA, ASIA, JAPAN, PHILIPPINES, HAWAII, WEST INDIES, CENTRAL AND SOUTH AMERICA.

**The Hon. Hamm Young & Co.**  
"Dependable Service Since 1899"

Territorial Agents  
RAW SUGAR 3.53—REFINED 4.65

## 1 DAY Advertiser WANT AD RESULTS

THIS 80c WANT AD FOUND THE DESIRED HOME

Private home, well furnished, 3 bdrms., preferably male, Spanish or Hawaiian. 2 in family. References unquestionable. Write E. O. Box 211.

80c RENTED THIS ROOM

Fronting—Large, cool, quiet, for gentleman. Private home, par. Ph. 219.

80c RETURNED THIS PUP

Lost last Wednesday, male English Pointer, 6 mos. old, white with brown markings. Phone 9662 or Route 1, Honolulu. Reward.

80c BROUGHT \$250 CASH

1931 Nash Sedan. Excellent condition. 4 months old. 1931 Nash. New. Overhauled. 1931 Nash. New. Overhauled. 1931 Nash. New. Overhauled.

For Quick Action Results  
DEPEND ON ADVERTISER  
Want Ads  
PHONE 2311

## Florida City Struck By Freak Tornado

(United Press by Radio)  
MIAMI, Fla., March 9.—A freak tornado today devastated four square miles of the Miami residential district, injuring at least 25 persons and causing heavy property damage.

## Have YOU Made Provision for OLD AGE?

A LIFE INCOME POLICY will pay you an income for life if you live—and will keep your family if you die. They cannot lose it in poor investments. They cannot spend it in unwise ways. Nobody but the family can get it. It is theirs for as long as they live.

## Have YOU Made Provision for OLD AGE?

A LIFE INCOME POLICY will pay you an income for life if you live—and will keep your family if you die. They cannot lose it in poor investments. They cannot spend it in unwise ways. Nobody but the family can get it. It is theirs for as long as they live.

## 1 DAY Advertiser WANT AD RESULTS

THIS 80c WANT AD FOUND THE DESIRED HOME

Private home, well furnished, 3 bdrms., preferably male, Spanish or Hawaiian. 2 in family. References unquestionable. Write E. O. Box 211.

80c RENTED THIS ROOM

Fronting—Large, cool, quiet, for gentleman. Private home, par. Ph. 219.

80c RETURNED THIS PUP

Lost last Wednesday, male English Pointer, 6 mos. old, white with brown markings. Phone 9662 or Route 1, Honolulu. Reward.

80c BROUGHT \$250 CASH

1931 Nash Sedan. Excellent condition. 4 months old. 1931 Nash. New. Overhauled. 1931 Nash. New. Overhauled. 1931 Nash. New. Overhauled.

For Quick Action Results  
DEPEND ON ADVERTISER  
Want Ads  
PHONE 2311

# Direct Air Route To Australia Held Necessary

## Island Survey Work Finished, Itasca Returns

Now Available to Any Company Planning Service

While the proposed airways route between Honolulu and Australia will be at first via New Zealand after stops at Pago Pago and Suva, a direct route from here to Brisbane, Australia, will be demanded by Australians to speed their mail service, the opinion of William Miller of the department of air navigation, department of commerce, who returned on the U. S. Coast Guard Cutter Itasca yesterday after a two months' expedition to South Sea islands.

A group of Kamehameha youths, who were collecting aerial data and weather information on Jarvis, Baker and Howland islands, also returned on the Itasca. There were 21 in the party.

Miller said that his department has completed its work and "any American airways company now proposed in such a service can now proceed."

**DATA COLLECTED**  
The youths who returned on the Itasca have been collecting data on the tiny islands for the past year. The original copy of their daily reports will be placed on file at the local U. S. weather bureau and will be available to any South Sea expedition, Miller said. Copies also have been sent to the station where they will be available at the bureau of air navigation, department of commerce. Miller's personal report will also be sent to Washington and a statement from the department may be expected within the next few days, he said, relative to the air route to Australia.

Asked if there would be a landing between here and Samoa, Miller said that the choice would undoubtedly lie between Palmyra and the Kingman Reef, which is not far from there. They are roughly a thousand miles south of Honolulu.

## DUTY

One of the duties of an individual, both to himself and to others, is to pay bills promptly.

If you are facing an emergency, hospitalization, doctor bills, or a bereavement, let us provide cash funds for your needs.

**PERSONAL FINANCING SERVICE**

enables you to quickly obtain needed cash with character and income as collateral.

**Honolulu Finance & Thrift Co., Ltd.**  
ALAKA and KING STS.

## TRAVEL GUIDE

**AUSTRALIA**  
Shops smart as Bond Street and Fifth Avenue—culture of London and Edinburgh—and behind them in the "bush," primitives still living in the Stone Age. . . . just a few of the remarkable things you'll find in Australia. . . . Year round sports, thrills galore. . . . Plan a trip to that great continent via New Zealand, with stops at Samoa and Fiji. The fine ship Marion and Monterey will take you there.

**NEAR SAILINGS TO CALIFORNIA**  
S.S. MALOLO . . . Mar. 14  
S.S. MARIPOSA . . . Mar. 18  
S.S. LURELINE . . . Mar. 21  
To Samoa, Fiji, New Zealand, Australia  
S.S. MARIPOSA . . . Apr. 6  
S.S. MONTEREY . . . May 4

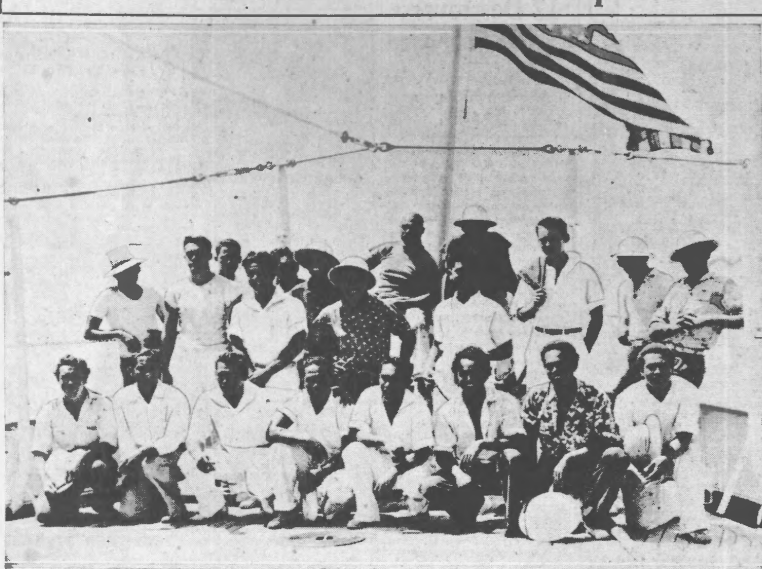
**TOURS**  
Previously reported or independent all-inclusive tours available all year to Australia and New Zealand.  
For travel information call "Castle & Cooke Travel Bureau"—Phone 321—Merchant St., Honolulu—Branches in Royal Hawaiian and Moana Hotels.

**CASTLE & COOKE, LTD., General Agents**

**Watson Line**  
**Oceanic Line**

S.S. LURELINE S.S. MONTEREY S.S. MALOLO S.S. MARIPOSA

## Kam Youths Return From South Seas Expedition



**GATHERED AERO AND WEATHER DATA FOR GOVERNMENT**—The USSCG Itasca returned from a two months' cruise through the South Seas and brought home these 21 Kamehameha youths who for the past year have been collecting aeronautical data and weather information for the U. S. department of commerce, bureau of air navigation, as well as specimens for the Bishop museum. All were in excellent health and spirits and declared they had thoroughly enjoyed the expedition. (Advertiser Photo)

Smith. While Australian laws at present prevent operation of foreign airplane companies into that country, I believe that eventually pressure will be brought to bear by residents themselves for a direct service instead of the round-about route across New Zealand."

### ENTRANCE LACKING

"If Palmyra is chosen for a depot," he said, "it will be necessary to blast an entrance into the lagoon and also to deepen the lagoon itself for supply ships. Better landing facilities prevail at Kingman's Reef but this is a barren atoll and will require considerable improvement before it can be inhabited. A radio station, supply depot and hotel will have to be erected at either of these spots."

"The next stop on the route should be at Pago Pago, which has a well-protected harbor. We visited there for a month this trip and during that time I took occasion to visit Apia in British Samoa, on the USS Lark.

"Apia harbor is not well-protected and is not available to large ships. I would not recommend it as an air depot."

"Suva, Fiji, would be the next stop and from there to Auckland, N. Z., to connect with a British line to Sydney, although the direct route to Australia is from Suva to Brisbane over the same route followed by the late Kingford-

Smith. While Australian laws at present prevent operation of foreign airplane companies into that country, I believe that eventually pressure will be brought to bear by residents themselves for a direct service instead of the round-about route across New Zealand."

### MADE OBSERVATIONS

Among those who made the expedition on the Itasca was Lt. E. W. Stephens, aerologist at the Fleet Air base, Pearl Harbor. Lt. Stephens made daily upper-air observations during the Itasca's cruise, both south and north bound and for 1,000 miles along the equator. This is the first time in history that such observations have been made south of the Hawaiian Islands.

Balloons equipped with recording instruments were sent aloft daily and Lt. Stephens was able to learn wind direction and velocity at altitudes averaging 10,000 feet. At Pago Pago he made a recording at 17,000 feet.

The daily logs of the Kamehameha youths stationed on the islands will be turned over to the Bishop museum, Miller told reporters. They contain much interesting information about bird life, shells and fish around the islands. Many fine collections of shells were obtained for the museum as well as other specimens. A call at Swain's island by two of the youths resulted in other interesting collections for the museum.

### BOYS COMPLIMENTED

"I would like to take this opportunity," said Miller, "to compliment the boys for the fine work they did during the past year. They gathered much valuable information. Although isolated for long periods, their morale and spirit were excellent. There was no sickness. In fact, I think they returned in better health than when they left here."

The boys themselves all declared they had enjoyed the experience but were naturally glad to be home again. Those in the party were:

Henry Ahia, Daniel Toomey, Jacob Hall, Kenneth Bell, Wm. Yonnes, Henry Mahika, A. Pinaia, Wm. H. Kaine, Archie Kauhika, H. Hooper, Joseph Kim, L. Walvalde, J. C. Kamakawai, K. Opolio, Jos. Anakale, Polina Faufala, Alex Kahapea, Henry Oumukui, Solomon Kalama, J. Carroll, G. Kahana.

Besides Miller and Lt. Stephens, others who made the Itasca trip included Lt. Comdr. L. Herndon, Lt. (jg) R. H. J. Conn, Lt. R. W. D. Wood, USN, and Major Clayton Brissell. All are identified with service aviation.

Why they would remain here for about three weeks winding up details of the expedition, He then expects to go to the Orient but will return to Washington in time to conduct a similar survey of trans-Atlantic conditions "where the next major aero-commercial route will be established."

### FLARE CAUSES QUERIES

A red flare in the sky, caused by burning of rubbish by city-county workers near Kapiolani park early last night prompted several persons to call The Advertiser and the police and fire departments to inquire where abouts of the blaze.

## Itasca Lands Food On Isle

Coast Guard Vessel Aids Hurricane Victims

(Continued from Page 1)

route from here to New Zealand and Australia.

After visiting the three islands mentioned, the Itasca put into Swain's island on her way to Pago Pago.

Swain's island, 200 miles north of Pago Pago, and at the island two Kamehameha youths, A. Pinaia and K. Opolio, were left to collect data and specimens for the Bishop museum.

Swain's is owned and managed by a man named Jennings. It is a copra, banana and breadfruit trading post in the South Seas and is visited only irregularly by trading schooners.

The Itasca then went on to Pago Pago where she remained a month, putting back to Baker, Howland and Jarvis. It was while on her way back that a severe hurricane occurred, the Itasca catching the tail-end of it at sea.

Wireless reports to her, however, reported about \$50,000 damage to property in Samoa. It was then that the Itasca made for Swain's island, where extensive damage had also occurred and the residents were found to be almost without food supplies, since they grow most of their own. The Itasca promptly put ashore about 1,000 pounds of foodstuffs, took aboard the two youths who had been left there and after visiting the other islands where additional youths were picked up, headed for home.

Swain's island has a population of about 175, mostly natives from the Cook group, who were brought there to work copra. The Kam boys managed to collect many interesting souvenirs for the museum. They also made a study of the natives which will be submitted to the museum.

## Deadline Set This Saturday For Dog Show

Entries for the Hawaiian Kennel club's all-breed dog show which will be held at the Armory March 12 and 13 will close Saturday, and all nominations of dogs must be in the hands of Ed Crane, secretary of the club, not later than midnight of that day.

Crane announced yesterday. Entries may be mailed to Box 3353, but must reach the committee not later than Saturday midnight. Entry blanks may be obtained from Arthur Zane, Capitol Market, any of the local pet hospitals, or from Crane through Box 3353, Honolulu.

An important meeting of entry committee members appointed recently for the various breeds will be held tomorrow night at Room 412, Hawaiian Trust building. All interested are asked to attend.

## Wong Wing Awana Dies; Rites Today

Wong Wing Awana, 1030 South Queen street, retired coffee planter, died at his home at 4:45 a. m. yesterday after a short illness. Heart trouble was the cause of death.

Funeral services will be held at 10 a. m. today at the Nuanu Funeral parlors, where the body has been on view since 9 p. m. yesterday. Burial will take place in the Maunaloa Chinese cemetery.

Awana was born in China and was 76 years old, coming to Hawaii 58 years ago. He was engaged in coffee culture in the islands for several years, and retired from active work in 1905.

A widower, Awana is survived by a daughter, Mrs. Agnes Kawa; four sons, Benedict Ahina, David Aukai, Clement Aoi and John Ahana Awana; 21 grandchildren, and two great-grandchildren.

## Kamehameha Boys' School Moves To Camp For Week

A new departure in island education is being carried out by the Kamehameha school for boys, the experiment to end tomorrow.

The entire school has been taken out to Camp Erdman, the YMCA camp at Mokuia, half of the student body spending the first three days last week and the other half three days this week.

At the camp regular school classes are held each morning, instructors holding their sessions in the craft shop and main hall at the camp.

### GO GO TO CAMP

Transported by school buses, 100 boys went to the camp last week under the leadership of Claude Banning, and 80 went out Sunday, in charge of Charles Parrent, both of the faculty. Donald Mitchell held charge of the camp programs for both sessions.

## Deadline Set This Saturday For Dog Show

Entries for the Hawaiian Kennel club's all-breed dog show which will be held at the Armory March 12 and 13 will close Saturday, and all nominations of dogs must be in the hands of Ed Crane, secretary of the club, not later than midnight of that day.

Crane announced yesterday. Entries may be mailed to Box 3353, but must reach the committee not later than Saturday midnight. Entry blanks may be obtained from Arthur Zane, Capitol Market, any of the local pet hospitals, or from Crane through Box 3353, Honolulu.

An important meeting of entry committee members appointed recently for the various breeds will be held tomorrow night at Room 412, Hawaiian Trust building. All interested are asked to attend.

## Wong Wing Awana Dies; Rites Today

Wong Wing Awana, 1030 South Queen street, retired coffee planter, died at his home at 4:45 a. m. yesterday after a short illness. Heart trouble was the cause of death.

Funeral services will be held at 10 a. m. today at the Nuanu Funeral parlors, where the body has been on view since 9 p. m. yesterday. Burial will take place in the Maunaloa Chinese cemetery.

Awana was born in China and was 76 years old, coming to Hawaii 58 years ago. He was engaged in coffee culture in the islands for several years, and retired from active work in 1905.

A widower, Awana is survived by a daughter, Mrs. Agnes Kawa; four sons, Benedict Ahina, David Aukai, Clement Aoi and John Ahana Awana; 21 grandchildren, and two great-grandchildren.

## Woman Pleads Guilty To Fraud

Ex-Waiohinu Postmistress Faces Charge

Mrs. Juliette Apliki, formerly in charge of the post office at Waiohinu, Kau, island of Hawaii, pleaded guilty in the federal court yesterday to an indictment which charged her with having padded her payroll.

It was understood yesterday that the woman has refunded to the government the amount of money due received illegally. She has been represented by Attorney Earl R. McGhee, former deputy attorney general of Hawaii.

Judge Huber continued the imposition of sentence to 2 p. m. next Monday.

One liquor and two narcotic cases were disposed of by Judge Huber, with the kokua of Willson C. McGhee, chief assistant district attorney, as follows:

Sun Hen Wong, liquor, \$100 fine and six months' imprisonment in the city jail. Execution of the jail sentence was suspended, however, and Wong was placed on probation for five years.

Park Chee Sun, narcotics, one year and a day in penitentiary. The next teacher will be held this afternoon at Hawaii hall, University of Hawaii campus. Registration may be made through the extension division. Guest are invited to attend the first meeting.

## NEW LITERATURE CLASS

The first class in children's literature, conducted by Helen C. Twitchell, Punahou elementary school teacher, will be held this afternoon at Hawaii hall, University of Hawaii campus. Registration may be made through the extension division. Guest are invited to attend the first meeting.

"So far," said Homer F. Barnes, school principal, "the experiment seems to be a very successful one. The boys, of course, are very enthusiastic, and all are in favor of making it an annual program. We shall not decide upon that, however, until we have given results of the experiment more careful study."

## Dr. Compton To Speak Here On Cosmic Rays

Nobel Prize Winner Talks At Dillingham Hall Tomorrow Night

Although his lecture on "Cosmic Rays" in Dillingham hall tomorrow evening will be for popular consumption by laymen, Dr. Arthur H. Compton is expected to bring to his Honolulu audience much of the information he digested in his now-famous talk to the American Association for the Advancement of Science in St. Louis last January.

Of his St. Louis lecture the magazine Time said that "it marked the end of the 'mystery' of 'atomic rays,' wrote into one of the most reverberating scientific controversies of the century."

The "controversy" was between Dr. Compton and Dr. Robert Millikan of California Institute of Technology. Dr. Millikan contended that cosmic rays, discovered by a German at the turn of the century and a scientific curiosity since, were light rays or photons. Dr. Compton said they were electric particles.

### STRANGER AT POLLS

Data gathered from all over the world indicated that cosmic rays were affected by the magnetic pull of the earth. Near the north and south magnetic poles there were more than near the equator.

Dr. Millikan's theory that the charged particles were secondary rays dislodged from the air was shaken when Dr. Compton found charged particles with energies of 30 billion volts and when he himself measured rays at the equator with 10 billion volts.

Since then Dr. Millikan has gradually come to Dr. Compton's position, until the University of Chicago scientist is being looked to as the foremost authority on this subject.

Both Dr. Compton and Dr. Millikan are Nobel prize winners.

Cosmic rays led to the discovery of the positive electron, help in the study of the earth's magnetic fields, and are of other scientific interest and use. Some observers point out that since cosmic rays pass 30 rays pass through the human body a second they may have some effect on life and death.

### MEASURED RAYS

Dr. Compton made the first wave-length measurement of hard gamma rays, discovered the change in wave length of X-rays when scattered, discovered the total reflection of X-rays, and is credited with many other scientific firsts. He has won many awards and honors in addition to the Nobel prize.

Dr. Compton is a deacon in the Baptist church, and is actively interested in missions, settlement work and the YMCA.

The lecture tomorrow is under the auspices of the University of Hawaii, the Hawaiian Academy of Science and the Honolulu section of the American Chemical society. It begins at 8 p. m. and is open to the public. Slides will be shown.

## Woman Pleads Guilty To Fraud

Ex-Waiohinu Postmistress Faces Charge

Mrs. Juliette Apliki, formerly in charge of the post office at Waiohinu, Kau, island of Hawaii, pleaded guilty in the federal court yesterday to an indictment which charged her with having padded her payroll.

It was understood yesterday that the woman has refunded to the government the amount of money due received illegally. She has been represented by Attorney Earl R. McGhee, former deputy attorney general of Hawaii.

Judge Huber continued the imposition of sentence to 2 p. m. next Monday.

One liquor and two narcotic cases were disposed of by Judge Huber, with the kokua of Willson C. McGhee, chief assistant district attorney, as follows:

Sun Hen Wong, liquor, \$100 fine and six months' imprisonment in the city jail. Execution of the jail sentence was suspended, however, and Wong was placed on probation for five years.

Park Chee Sun, narcotics, one year and a day in penitentiary. The next teacher will be held this afternoon at Hawaii hall, University of Hawaii campus. Registration may be made through the extension division. Guest are invited to attend the first meeting.

## NEW LITERATURE CLASS

The first class in children's literature, conducted by Helen C. Twitchell, Punahou elementary school teacher, will be held this afternoon at Hawaii hall, University of Hawaii campus. Registration may be made through the extension division. Guest are invited to attend the first meeting.

"So far," said Homer F. Barnes, school principal, "the experiment seems to be a very successful one. The boys, of course, are very enthusiastic, and all are in favor of making it an annual program. We shall not decide upon that, however, until we have given results of the experiment more careful study."

## The Hard-To-Please Hostess



will welcome these new gift lines, styled by Lay in a s - cocktail mats, glass holders, luncheon sets, table runners, and others to choose from—in our downtown Gift Department. Prices are moderate.

**HONOLULU PAPER COMPANY**  
1045 BISHOP

**towne and country shop**  
Continuing  
**CLEARANCE**  
for new stock

**1/3 OFF ON All DRESSES and HATS**  
(Excepting Lashallas)

**BERGSTROM MUSIC CO.**  
EVERYTHING IN MUSIC

**STORY & CLARK PIANOS**  
Treated With  
Bruce Preservative Against Termites  
Is the Only Piano so Treated  
for Sale in Hawaii

Your Inspection Invited  
At  
The Oldest Music Store in Hawaii  
—Always in the Lead—

**Bergstrom Music Co., Ltd.**  
1045 FORT STREET

"A Schenley Whiskey of Character" with the Merit of Merit

This is the famous "double-distilled" straight whiskey of Kentucky, made by old-time Kentucky distillers the good old Kentucky way.

**SCHENLEY'S CREAM OF KENTUCKY**

90 PROOF

Across 2000 miles of sea to sunny Hawaii...Schenley's CREAM of KENTUCKY Kentucky straight whiskey travels! For everywhere folks have found this is the whiskey that makes their drinks as luscious as the famous ones they mix down in Dixie!

One liquor and two narcotic cases were disposed of by Judge Huber, with the kokua of Willson C. McGhee, chief assistant district attorney, as follows:

Sun Hen Wong, liquor, \$100 fine and six months' imprisonment in the city jail. Execution of the jail sentence was suspended, however, and Wong was placed on probation for five years.

Park Chee Sun, narcotics, one year and a day in penitentiary. The next teacher will be held this afternoon at Hawaii hall, University of Hawaii campus. Registration may be made through the extension division. Guest are invited to attend the first meeting.

"So far," said Homer F. Barnes, school principal, "the experiment seems to be a very successful one. The boys, of course, are very enthusiastic, and all are in favor of making it an annual program. We shall not decide upon that, however, until we have given results of the experiment more careful study."

Funeral services will be held at 10 a. m. today at the Nuanu Funeral parlors, where the body has been on view since 9 p. m. yesterday. Burial will take place in the Maunaloa Chinese cemetery.

Awana was born in China and was 76 years old, coming to Hawaii 58 years ago. He was engaged in coffee culture in the islands for several years, and retired from active work in 1905.

A widower, Awana is survived by a daughter, Mrs. Agnes Kawa; four sons, Benedict Ahina, David Aukai, Clement Aoi and John Ahana Awana; 21 grandchildren, and two great-grandchildren.

Why they would remain here for about three weeks winding up details of the expedition, He then expects to go to the Orient but will return to Washington in time to conduct a similar survey of trans-Atlantic conditions "where the next major aero-commercial route will be established."

Besides Miller and Lt. Stephens, others who made the Itasca trip included Lt. Comdr. L. Herndon, Lt. (jg) R. H. J. Conn, Lt. R. W. D. Wood, USN, and Major Clayton Brissell. All are identified with service aviation.

The entire school has been taken out to Camp Erdman, the YMCA camp at Mokuia, half of the student body spending the first three days last week and the other half three days this week.

At the camp regular school classes are held each morning, instructors holding their sessions in the craft shop and main hall at the camp.

Transported by school buses, 100 boys went to the camp last week under the leadership of Claude Banning, and 80 went out Sunday, in charge of Charles Parrent, both of the faculty. Donald Mitchell held charge of the camp programs for both sessions.

Dr. Arthur H. Compton is expected to bring to his Honolulu audience much of the information he digested in his now-famous talk to the American Association for the Advancement of Science in St. Louis last January.

Of his St. Louis lecture the magazine Time said that "it marked the end of the 'mystery' of 'atomic rays,' wrote into one of the most reverberating scientific controversies of the century."

The "controversy" was between Dr. Compton and Dr. Robert Millikan of California Institute of Technology. Dr. Millikan contended that cosmic rays, discovered by a German at the turn of the century and a scientific curiosity since, were light rays or photons. Dr. Compton said they were electric particles.

Data gathered from all over the world indicated that cosmic rays were affected by the magnetic pull of the earth. Near the north and south magnetic poles there were more than near the equator.

Dr. Millikan's theory that the charged particles were secondary rays dislodged from the air was shaken when Dr. Compton found charged particles with energies of 30 billion volts and when he himself measured rays at the equator with 10 billion volts.

Since then Dr. Millikan has gradually come to Dr. Compton's position, until the University of Chicago scientist is being looked to as the foremost authority on this subject.

Both Dr. Compton and Dr. Millikan are Nobel prize winners.

Cosmic rays led to the discovery of the positive electron, help in the study of the earth's magnetic fields, and are of other scientific interest and use. Some observers point out that since cosmic rays pass 30 rays pass through the human body a second they may have some effect on life and death.