

SOME ARTIFACTS FROM THE TRAIL
SITE, DADE COUNTY, FLORIDA

by
Wesley F. Coleman

originally published in the Florida Anthropologist,
vol. 25, no. 3, Sept, 1972.

MONROE COUNTY PUBLIC LIBRARY
HELEN WADEY BRANCH
POST OFFICE BOX 1129
ISLAMORADA, FLORIDA 33036

FLORIDA
COLLECTION

NOTE: THIS MATERIAL MAY BE PROTECTED
BY COPYRIGHT LAW (TITLE 17 U.S. CODE).

REFERENCE

SOME ARTIFACTS FROM THE TRAIL SITE, DADE COUNTY, FLORIDA

Wesley F. Coleman

The artifacts illustrated in Figures 1-3 were recovered by William Carson of the Dade County Chapter of the Florida Anthropological Society at the well known Trail site west of Miami (our reference T-R-4). Appreciation is hereby expressed to James Shaffer for the excellent pictures.

The first (Fig. 1) is a bone "adze" handle similar to several that have been found in Florida (Bullen 1953:15). They are well known but are not exactly common. It has a rounded hole in one end and a slotted one in the other end. The handle of the "adze" was probably made of wood with a short bent lower portion which was fitted into the larger hole. A stone or shell tool was inserted into the slot to form the working end. Carson's handle was found at a depth of 13 inches below the surface and probably refers to a Glades II time period.

Figure 2 illustrates an odd-shaped clay pendant that our research over the past year has led us to believe is unique. Found at a depth of 6 inches in the association with Glades Tooled rim sherds, it must be Glades III in date. It is made of a Glades gritty paste and has two holes, one at each end. One presumably was for suspension by a cord and the other, perhaps, for the insertion of a feather. Most pendants found in Florida have a groove near the top for suspension but a few, usually of shell, have holes.

In Figure 3, a, we illustrate a stage in the manufacture of a bone awl or hair pin from the foreleg of a deer. The pin is nearly complete. All that remains to be done is to remove it from the blank and to grind or polish the end and sides. For comparison a plain pin is depicted in Figure 3, b.

References Cited

- Bullen, Ripley P.
1953 The Famous Crystal River Site. Florida Anthropologist,
vol. 6, no. 1, pp. 9-37. Tallahassee.
- Elder, Robert A.
1971 Personal Communication. Museum specialist,
Smithsonian Institution.

Miami, Florida
1971

ARTIFACTS - TRAIL SITE

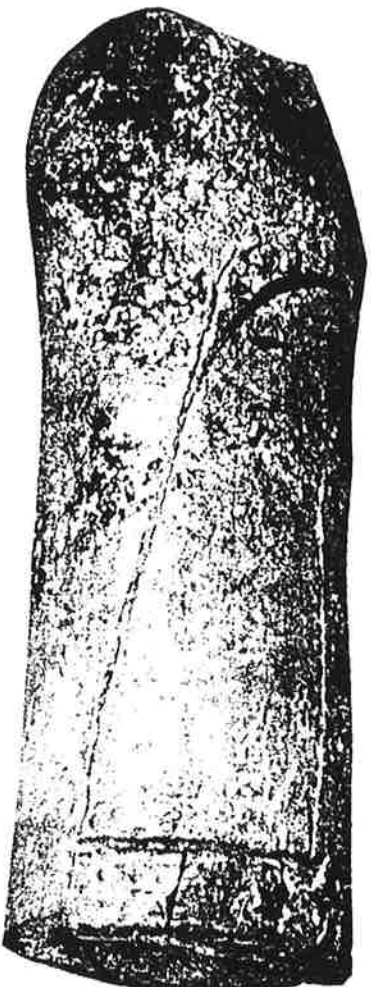
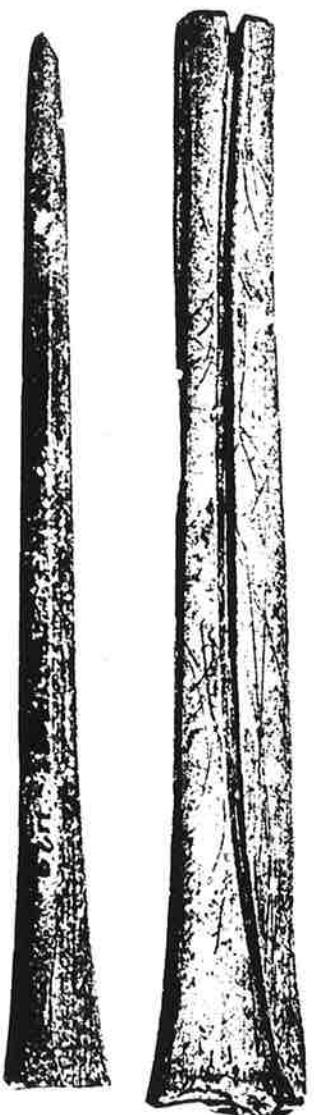


Fig. 1. Bone adze handle.



Fig. 2. Clay pendant.

Fig. 3. a, bone awl in process of manufacture and b, finished.

The
inal object
of the paper
scribe two

The
flat or con
mano (Ma
into boilin
to remove
on the met
in pots, w
unleavened
can be see

Duh.
monial eve
ored guest
im Thurn
gers", in
"jiggers"
soft tissu
complete
tions a fu
fects its u
men while
platters (i
sleeping.

Duh.
nails or g
head on or
been reco

Florida A