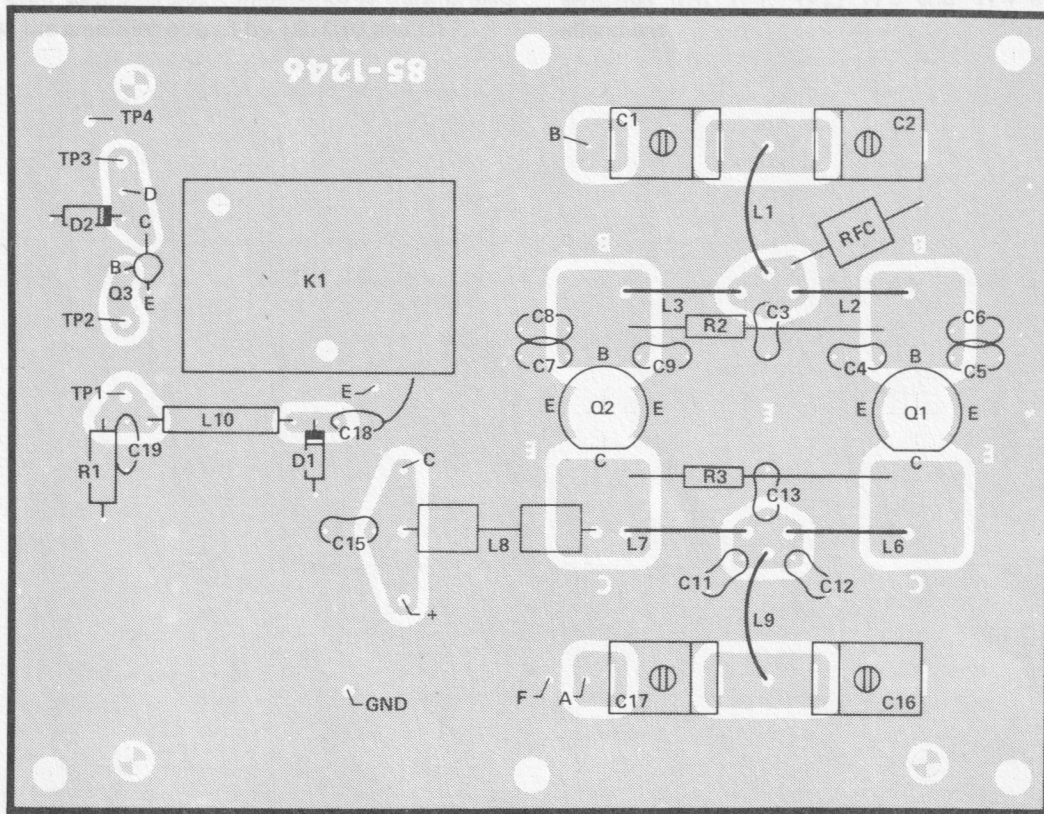


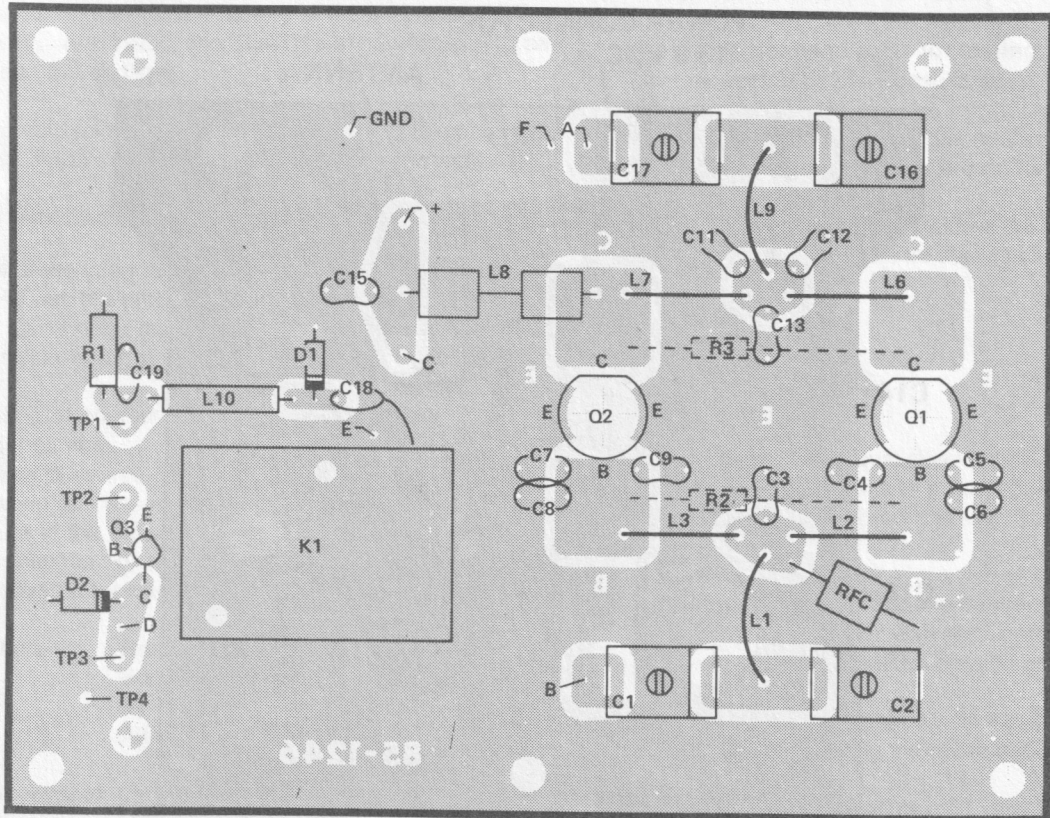
CIRCUIT BOARD X-RAY VIEWS

NOTE: To identify a part shown in one of these Views, so you can order a replacement, proceed in either of the following ways:

1. A. Refer to the place where the part is installed in the Step-by-Step instructions and note the "Description" of the part (for example: 22 k Ω , .05 μ F, or 2N2712).
 - B. Look up this Description in the "Parts List."
2. A. Note the identification number of the part (R-number, C-number, etc.).
 - B. Locate the same identification number (next to the part) on the Schematic. The "Description" of the part will also appear near the part.
 - C. Look up this Description in the "Parts List."



(Viewed from foil side)



(Viewed from component side)