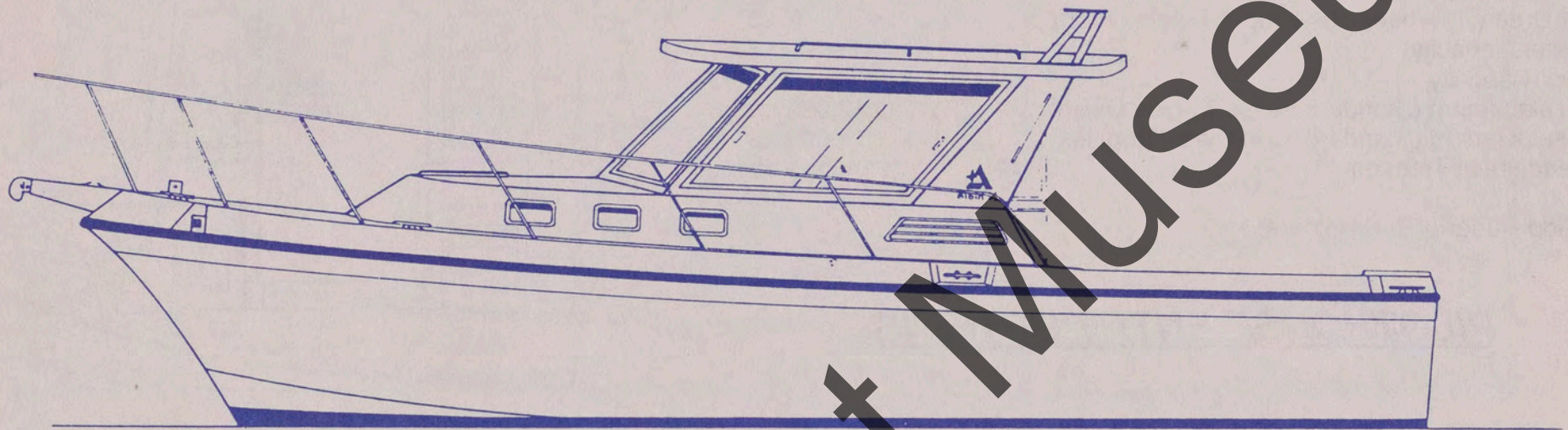


ALBIN-31 TOURNAMENT EXPRESS



TECHNICAL SPECIFICATIONS BULLETIN

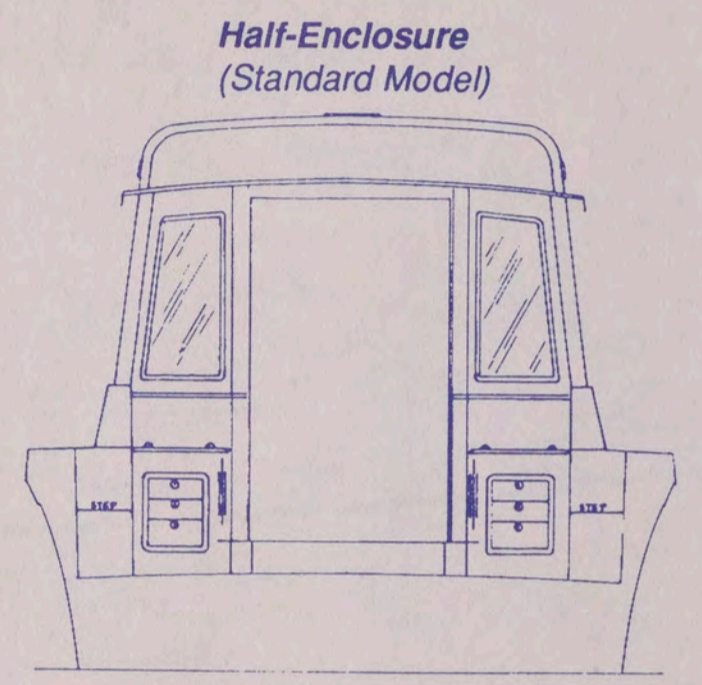
ALBIN MARINE

ALBIN-31 TOURNAMENT EXPRESS

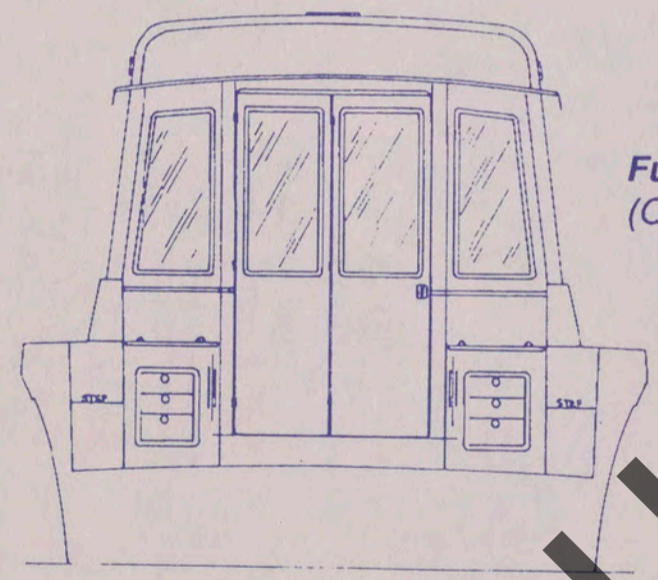
TECHNICAL SPECIFICATIONS

L.O.A. (Deck Fitted, C/W Standard Pulpit)	33' 00"
Length (Hull & Deck Only)	31' 08"
Length O.A. (C/W Pulpit & Swim Platform)	34' 09"
L.W.L.	27' 09"
Beam (Hull with Deck Fitted)	12' 02"
Beam O.A. (Complete with Rub Rail)	12' 04"
Draft (Single Engine with Skeg)	3' 10"
Draft (Twin Engines)	3' 03"
Air Draft (Complete with Radar Arch)*	10' 03"
Air Draft (To Wheelhouse Top w/Folding Arch)	9' 03"
Water Capacity	73 Gals. U.S.
Fuel Capacity	300 Gals. U.S.
Displacement (Standard Single Engine Diesel)	12,000 lbs.
Displacement (Standard Twin Diesel Engines)	14,000 lbs.
Deadrise at Transom	14 Degrees

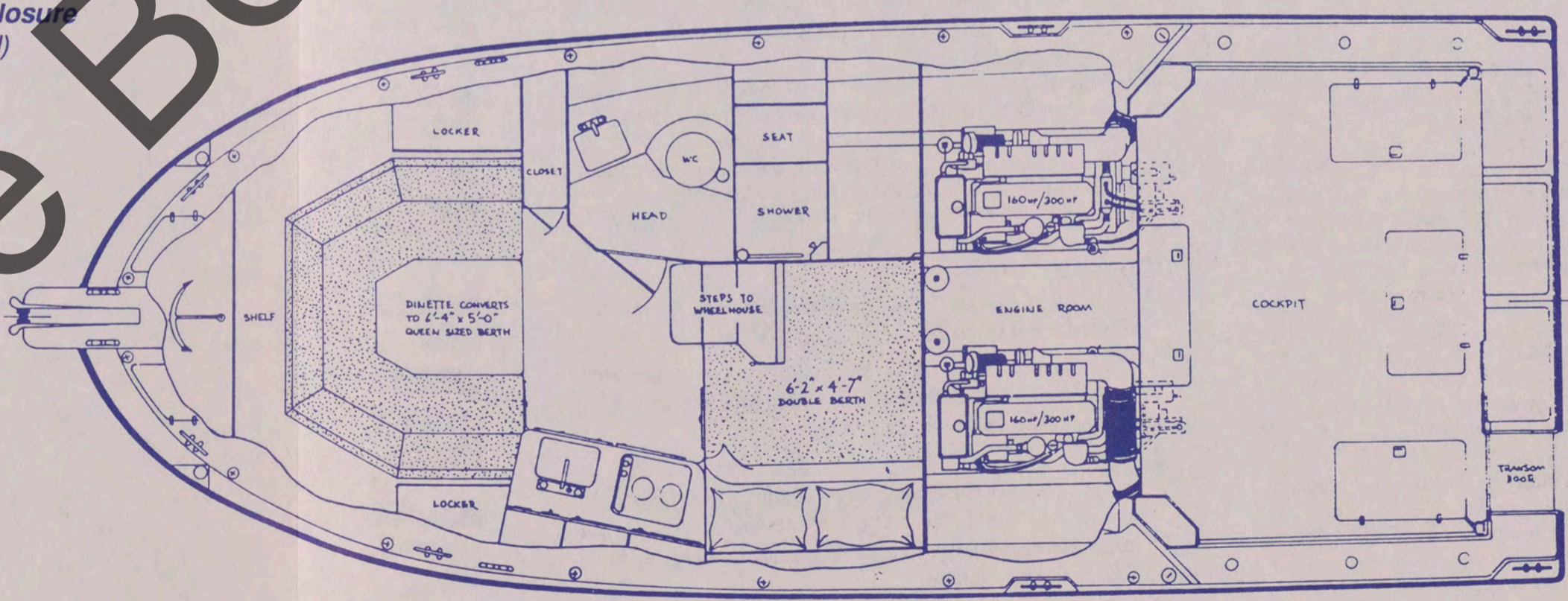
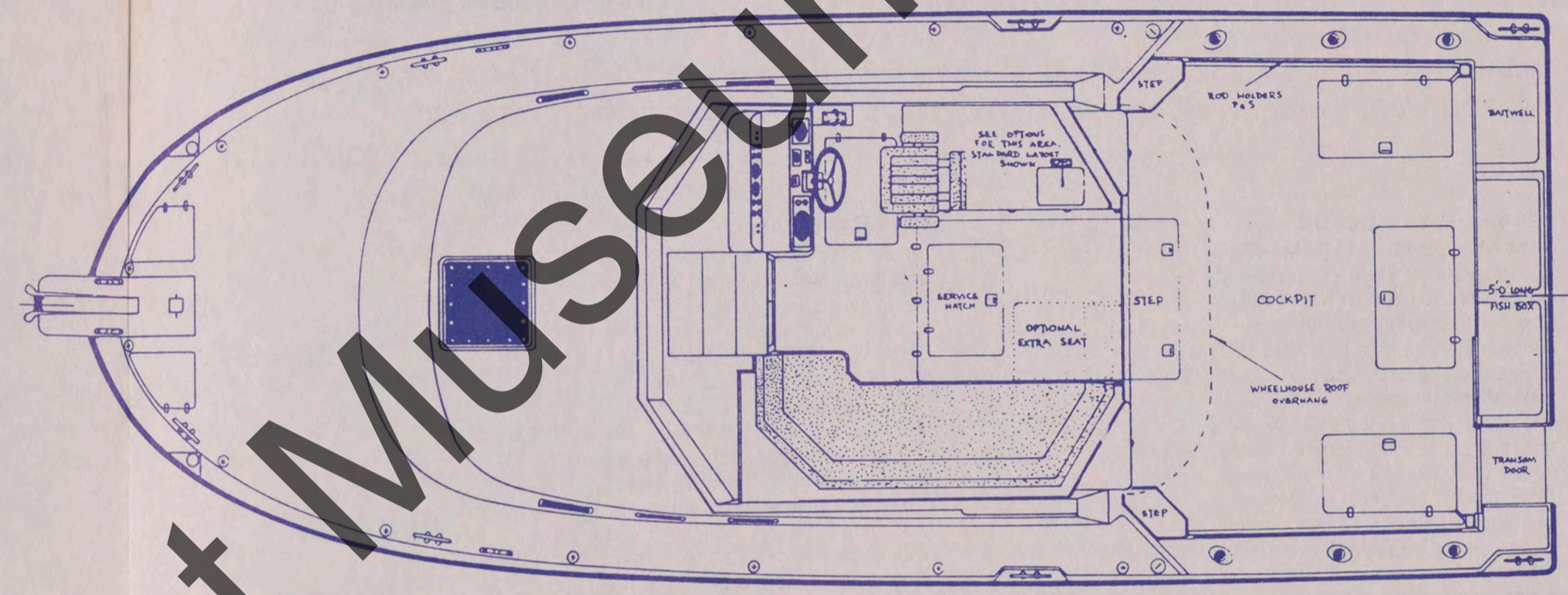
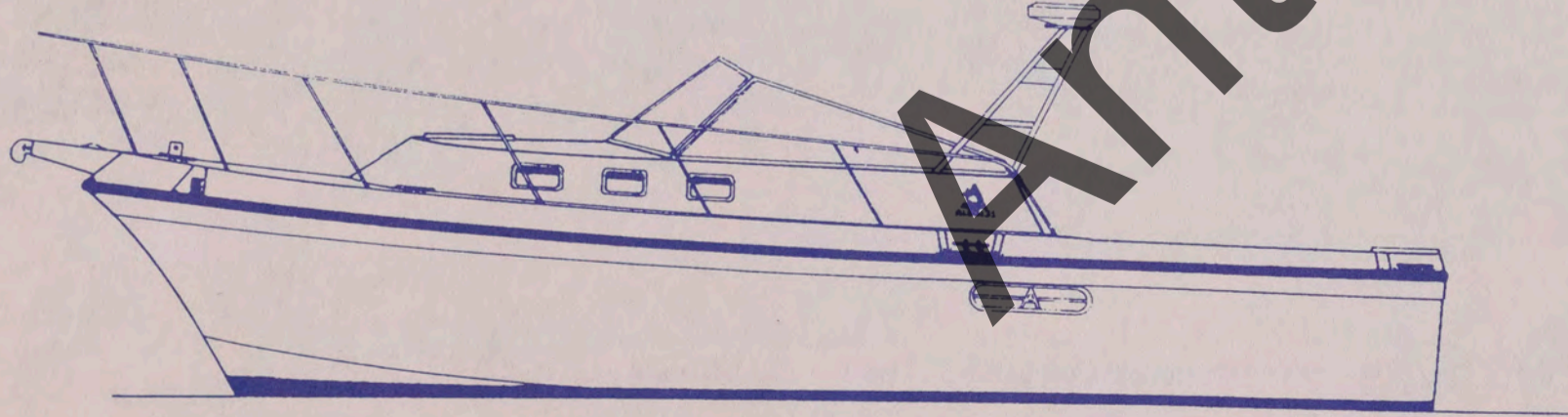
* Add Radar & Rod Holders, etc.



PILOTHOUSE ENTRY OPTIONS



CONVERTIBLE MODEL OPTION



ALBIN MARINE

ALBIN-31

TOURNAMENT EXPRESS

STANDARD EQUIPMENT LIST

The ALBIN-31 Tournament Express has been designed to give a soft and stable ride in heavy sea conditions coupled with a very economical fuel consumption. The Albin-31 is uniquely designed to meet the demands of the professional fisherman as well as providing accommodations and creature comforts to suit the needs of the cruising family. A rugged, individualized offshore vessel, the Albin-31 is built without compromise.— Available as Wheelhouse or Convertible Model.

Wheelhouse & Cockpit

Red/White Dome Light in Wheelhouse
 Courtesy Lights in Wheelhouse & Cockpit
 12V Outlet supplied at Helm station
 Hydraulic Steering with Tilt-Wheel
 Recess Rod Storage PORT and STBD Cockpit
 Large Storage and Access Hatches in Deck
 Raw Water Washdown in Cockpit
 (4) Rod Holders installed in Coamings
 Large 2-Hatch Fish/Storage Box in Transom
 Oversized Live Bait-well in Transom
 Sliding Helm Seat with Swivel
 Drawers and Tackle Storage
 Fresh Water Transom Shower (Hot water Option)
 Pantograph Windshield Wipers (2)
 Drink Holders Installed
 Sliding Windows PORT and STBD
 Wheelhouse Wet Bar with 3.5 Cu.Ft. 110/12V Refrigerator,
 Sink and Drawers
 Custom Electronic's area for Flush Mounting Electronics
 74 Sq.Ft. Cockpit with coaming bolsters
 Transom Door

Forward Deck Area

Wide, Unobstructed Side Decks
 Large Mooring Bit with Bow Pulpit
 S/S Extended Bow Rail to back of Wheelhouse
 (8) Large, S/S 10" Mooring Cleats
 Stainless Steel Horn
 (2) Hatches access Anchor Locker
 Large Opening Hatch in Forward Cabin Roof
 (5) Portholes with Screens in Forward Cabin
 Grab Rails on wheelhouse Roof and Sides
 Fully Vented Center Windshield
 Radar Arch with Antenna and Radar Pads

Mechanical / Electrical

Easy Access to Instrument Panel
 Full Engine Instrumentation with Audible Alarms
 Dockside 30 AMP Service with 50' Cord
 Holding Tank, 20 Gals.
 Ample 110V Outlets throughout with GFI Protection
 Fresh Water Cooled Engine (s)
 Large Hatch with Gas Struts for easy Engine Access
 Hydraulic Trim Tabs
 3-Bank, 40AMP Battery Charger
 Shafts are 1.75" Aquamet 22 Stainless Steel

Propellers are 3-Bladed Nibral Type
 Bronze Seacocks are Fitted
 All Metal Seacocks and Thru-Hull Fittings are Bonded
 (2) Electric Bilge Pumps and (1) Manual Pump
 Bow Thruster is Standard on Single-Engined Models

Cabin / Galley Area

Pressurized Water System
 Hot Water Heater, Heated by Engine and 110V
 Microwave Oven, 110V
 Coffee-Maker, 110V
 Broiler Oven / Toaster, 110V
 Electric Stove, 2-Burner, 110V
 Refrigerator, 2.8 Cu.Ft., 12/110V
 Full-sized Head / Shower with Marine Toilet and Hand
 Basin with dedicated sump pump-out
 Accent Lighting in Cabin & Head
 Courtesy Lights in Cabin & Head
 Adequate Drawers, Cupboards and Lockers
 Dinette Seating area converts to Queen-sized Berth
 Double Berth aft of Galley Area
 AM / FM Stereo Cassette Player

Upholstery & Carpet

Settee and Berth Cushions feature high-density foam with
 the Best Quality "Zip-On" Fabric Covers (See Dealer
 for available fabric choices)
 Custom Cabin Headliner with Leather-grained Vinyl over
 insulated foam backing
 Wheelhouse Seat Cushions and Back-rests upholstered in
 Heavy-duty Vinyl
 Padded Coaming Bolsters with Heavy-duty Vinyl Covers
 Forward Cabin is fully carpeted and color-matched to
 interior upholstery
 Wheelhouse area can be Carpeted with Indoor / Outdoor
 Carpet over insulated padding for Extra Sound
 Deadening (See Options List)

Construction

At Albin, we use the best available materials for the construction of our ocean-going vessels.

Deck Hardware is through-bolted using aluminum backing plates. Hull-to-deck joint is through-bolted and backed, chemically bonded and sealed using "5200" adhesive.

We construct our boats using a combination of bi-axial & uni-directional FRP knitted products. All through-hull areas have solid reinforcement to prevent damage to the Hull / Deck Laminates.

By the use of these construction techniques, coupled with superior hull and interior designs, we enjoy the enviable reputation of fine sea-keeping qualities, comfortable and practical interiors with economy in use.

