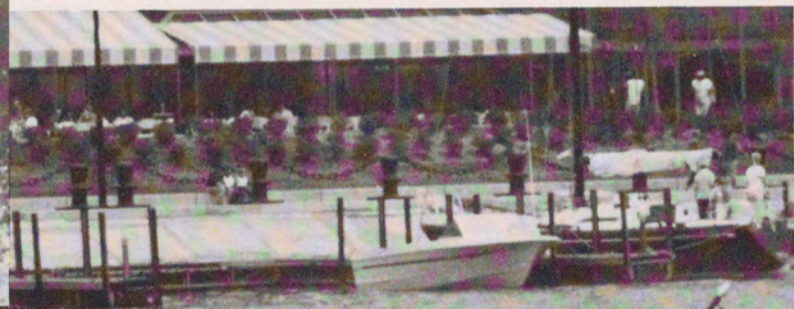


# *Elegante*

*modern mahogany classics*



*Alagante*  
BOAT WORKS, INC.  
MODERN MAHOGONY CLASSICS

MODERN CLASSICS

DEAR BOAT ENTHUSIAST:

We are extremely proud to introduce to you the ALAGANTE, one of the finest, most affordable, new mahogany runabouts available in the world today.

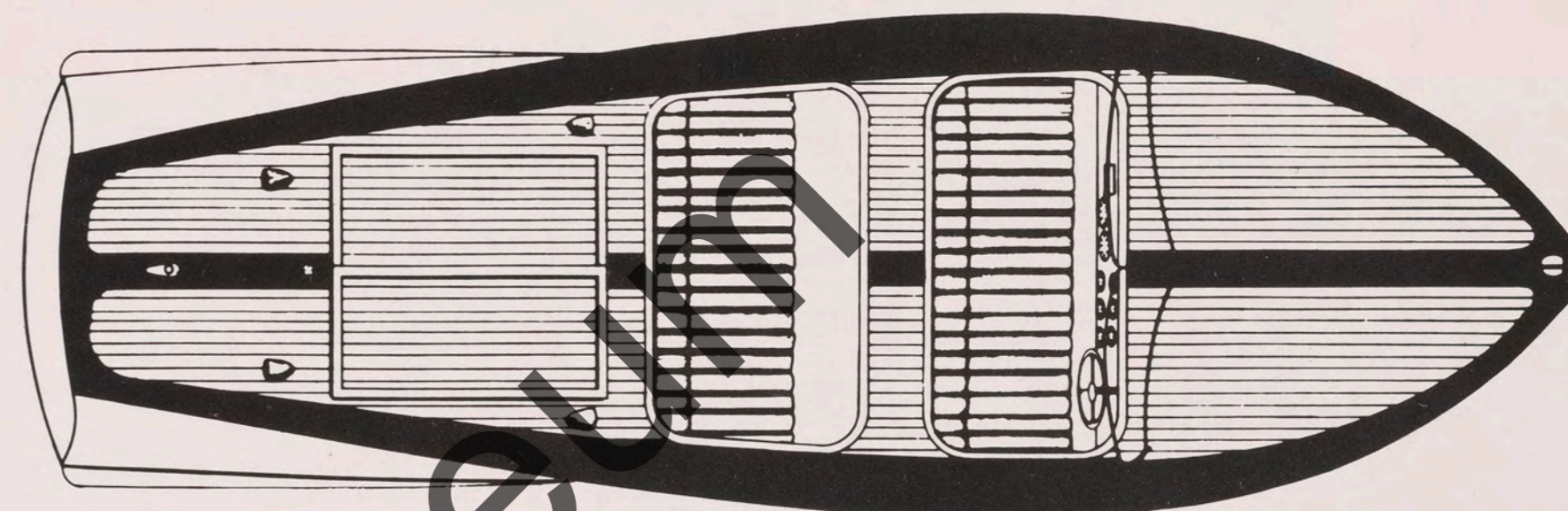
A lifetime love of wooden boats and the water led to the creation of the ALAGANTE. The ALAGANTE is a blending of sculptured beauty and warmth in wood, coupled with today's new construction technology. The boat has no live joints, which makes it super strong, dry rot protected and extremely rigid. The result is a high tech runabout with a comfortable, smooth ride and a finish equal to fine furniture. Add to all of this superb engineering, tasteful styling and appointments, great performance and precision construction and you have the ALAGANTE. When you own an ALAGANTE you have arrived in the boating world. This boat is truly for the discriminating boatman.

So, admire her beauty, stroke her satin smoothness, drink in her warmth, and then respond with anticipation as you turn the key to unleash the 270 H.P. Crusader engine that awaits your beckoned call. You shouldn't have to ask the question, "is she fast?", but since you did, I'll answer: "Of course." THIS BOAT WILL MAKE YOUR DAY.

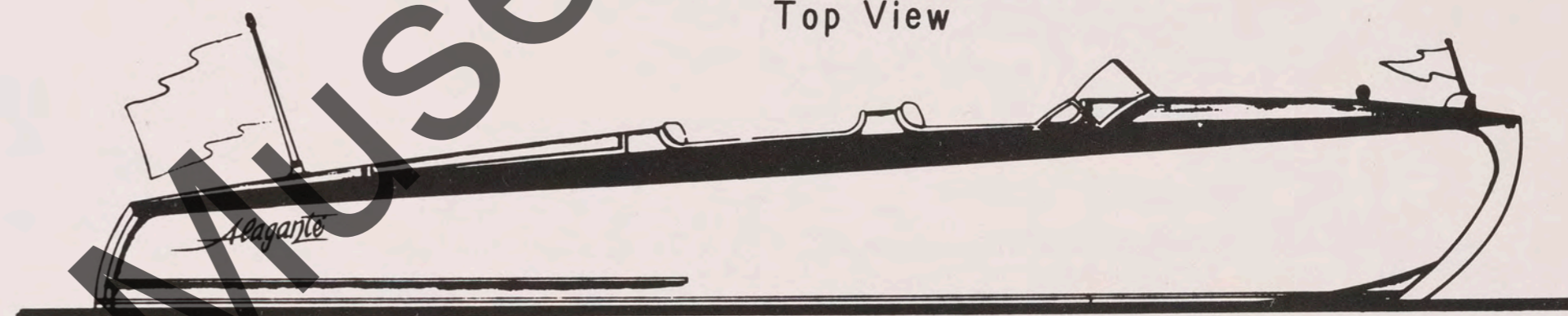
Let us introduce you to the fast glamorous world of ALAGANTE. She will be built to order in limited numbers. It would be unthinkable to launch an ALAGANTE without a bottle of Dom Perignon. Yes, a ride can be arranged. Serious inquiries are invited.

Yours very truly,

ALAGANTE BOAT WORKS INC  
2860 BYRNWYCK W.  
MAUMEE, OHIO 43537



Top View



Side View

ALAGANTE' SPECIFICATIONS

**CONSTRUCTION:**

The boat is constructed in a sturdy jig to insure complete, accurate spacing and alignment of all frames, keel, chines and sheers. The frames and hull planking are cut from plywood patterns and are hand fitted before securing in place, thus maintaining uniformity of construction from boat to boat.

**ENGINE STRINGERS:**

The engine stringers are a full 2 x 8 inch long fibered fir and are full length from transom extending as far forward towards the bow as possible.

**FRAMES, KEEL, STEM CHINES AND SHEERS:**

All frames are 7/8" mahogany. The keel and chines are laminated mahogany for greater strength. The sheer is mahogany with an additional 1/2" plywood shelf which is fastened to the top of the frames to align the frames and to also receive the covering boards of the decking.

**BOTTOM:**

The bottom is double planked. The inner planking is 1/4" plywood for greater strength and the outer planking is 3/8" mahogany. The marine plywood is screwed and glued to the frames, keel and chines. The outer planking is screwed and glued to the plywood inner planking and on through to the frames.

**SIDES:**

The sides and 7/16" mahogany. All side seams are backed up by battens and screwed with stainless or silicon bronze fastening. Scarf joints prevail at all planking butt joints.

**DECKING:**

The decking is 7/16" mahogany glued and screwed to the deck frames and battens. The deck seams are lightly routed into the wood to give the appearance of actual seams, similar to decking of old. Actually there are no live seams in the deck. The routed seams are painted white prior to the last coat of clear enamel applied to the deck. This gives the white seam look without the disadvantage of inherent shrinking that goes with the use of seam compound.

**TRANSOM:**

The transom is built up of four planks of mahogany, shaped to fit the boat. All seams are glued and screwed.

**GLUES AND ADHESIVES:**

The entire boat is glued together with the GOUGEON WEST SYSTEM glues and epoxy adhesives. Everyplace that two pieces of wood come together, in addition to the metal fasteners, glue is applied to hold the wood together. All side planking and deck planking butt together with a scarfed joint and is backed up with a butt block or battens. Plus, everything is screwed and glued in place. All side edges of the planking are glued to the adjoining plank.

**WOOD PRESERVATION:**

All frames and planking below the waterline has been given two coats of GOUGENS WEST SYSTEM epoxy. The side planking and frames above the waterline are thoroughly coated with WOODLIFE, a wood preservative.

Specifications continued on back

**FASTENINGS:**

All fastenings used in the construction are silicon bronze or stainless steel.

**HARDWARE:**

All deck hardware is heavy cast bronze and is heavily chrome plated. All hardware is styled in the traditional character of the thirties and forties. The cutwater is stainless steel. The thru hull hardware is of cast bronze for the proper strength. Propeller shaft is 1" stainless. Propeller is a Michigan Wheel, or equal, and it is cupped.

**FUEL SYSTEM:**

The fuel tank is located under the rear deck and is securely mounted in place. The tank is aluminized and is made by Tempo. Capacity is 27 gallons.

**RUNNING LIGHTS:**

The boat is equipped with fore and aft running lights as prescribed by U.S. Coast Guard regulations.

**INSTRUMENTATION:**

Included in the standard instrumentation package is a tachometer, amp meter, oil pressure gauge, water temperature and fuel level gauge.

**UPHOLSTERY AND CARPETING:**

Custom Naugahyde vinyl, styled in channel back design, is used in the seats. Carpeting is high style plush weave and it is color coordinated with the seat upholstery.

**CONTROLS:**

Standard equipment furnished with the boat is a bilge pump, blower, fire extinguisher, 12 volt battery, front and rear flag staffs and horn.

**POWER**

Standard power furnished with the boat is a Crusader Model 270. This is a V-8 - 270 direct drive engine, and it is raw water cooled.

THE FACTORY RESERVES THE RIGHT TO CHANGE THE DESIGN AND/OR SPECIFICATIONS OF THE BOAT, IF IN THE OPINION OF THE FACTORY OR SALES AGENT FOR ALAGANTE, SAID CHANGE WILL IMPROVE THE APPEARANCE OR PERFORMANCE OF THE BOAT. THE PRICE OF THE BOAT IS SUBJECT TO CHANGE WITHOUT NOTICE. PRICES ARE F.O.B. FACTORY.

*Alagante*  
**BOAT WORKS, INC.**  
419-865-5211

Howard A. Schneider, Chairman  
2860 BYRNWYCK WEST • MAUMEE, OHIO 43537  
PURVEYORS OF NEW, CLASSIC, AND VINTAGE BOATS