

Time
Album
36,
Traulier

Antiquaire Bozal Museum

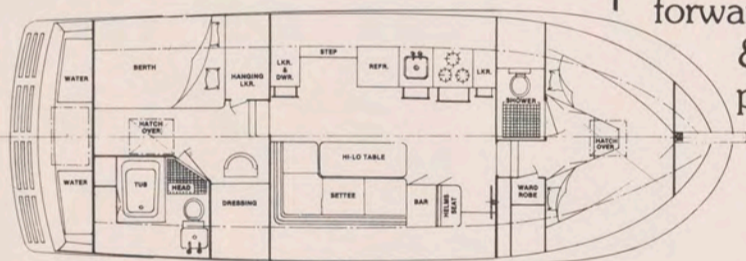
The way it performs is as impressive as the way it looks.

The Ultimate live-aboard Cruising Boat.

Albin Marine, world famous leader in bluewater diesel displacement cruisers, both power & sail, proudly introduces the Albin-36 Trawler.

Designed for those who accept no compromise in quality or workmanship, the Albin-36 Trawler is surely to be the most talked about yacht of its class.

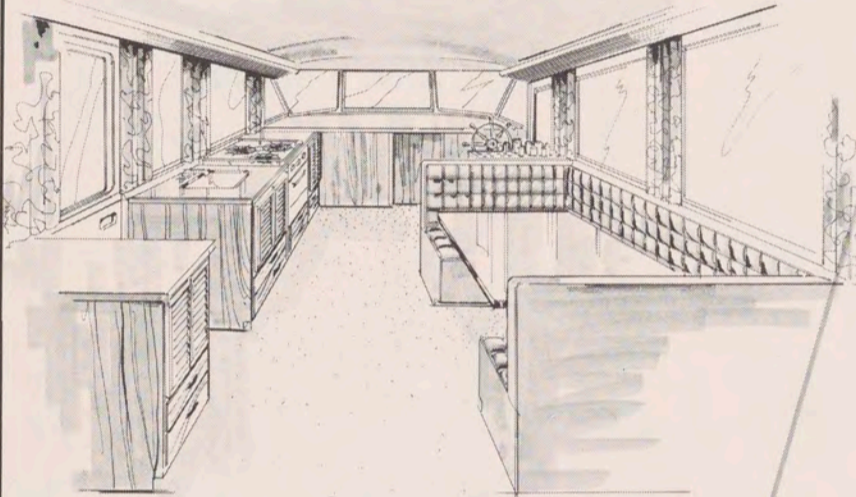
From the keel on up its quality all the way: Seventeen layers of fiberglass mesh plus an internal stringer system form its super rigid hull, craftsman style joiner work, the finest selected hardwoods and, of course, diesel power.



Interior comforts and unmatched convenience.

At 36', you'll find the Albin Trawler manageable enough to be cruised by a couple alone, yet

offering comfortable accommodations for six. After cabin stateroom features queen-size bed, vanity, desk, marble-laid sink counter, shower



& bath with pressure hot/cold water. At midships there's a large bridge deck for instruments & charts, convenient galley and U-shaped settee. The forward cabin with additional head & shower accommodates two in complete privacy. Still want more?

There's plenty of outdoor living space . . .

This is where the new Albin-36 Trawler shines. Her 13'2" beam provides beautiful walk-around teak decks coupled with a fly-bridge that seats eight.

Step down from the fly-bridge and you have a gorgeous sun deck.



Step down further and you have a fishing area second to none. For swimmers, snorkelers, or scuba divers, there's also a full width teak platform. All standard.

What about handling lines from the foredeck? A huge Samson post & wide bulwark made it a cinch. Stanchions with railing opening for easy operating are also standard.

Make the Albin-36 Trawler your standard . . . there's no comparison.

An unending list of standard features.

Once you've seen the Albin-36 Trawler you'll see why there's no comparison. Besides those standard features already mentioned you'll also find parquet floors throughout, sliding doors to main saloon, a complete galley with 3-burner stove & oven, electric refrigerator, 220 gal. water storage, 6-cylinder diesel/350 gal. fuel, dual hydraulic steering stations, circuit breaker panel . . . & more.

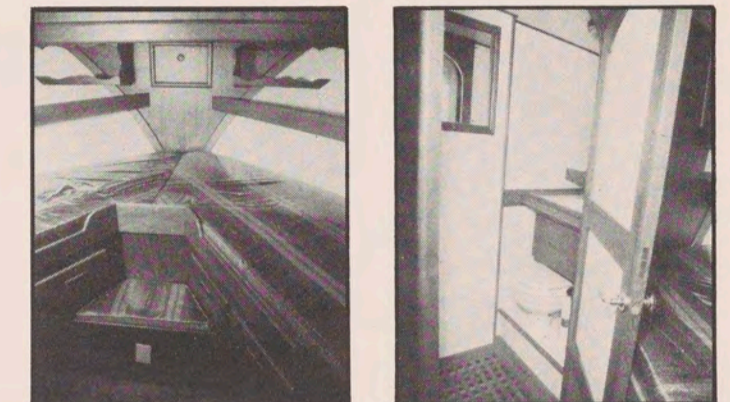
For further information or demonstration contact:

ALBIN MARINE

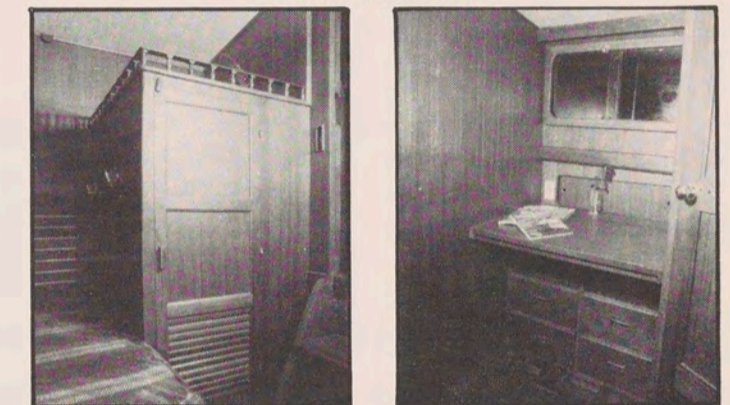
143 River Road
Cos Cob, CT. 06807

The Albin 36 Trawler provides you with unmatched interior comforts — all standard

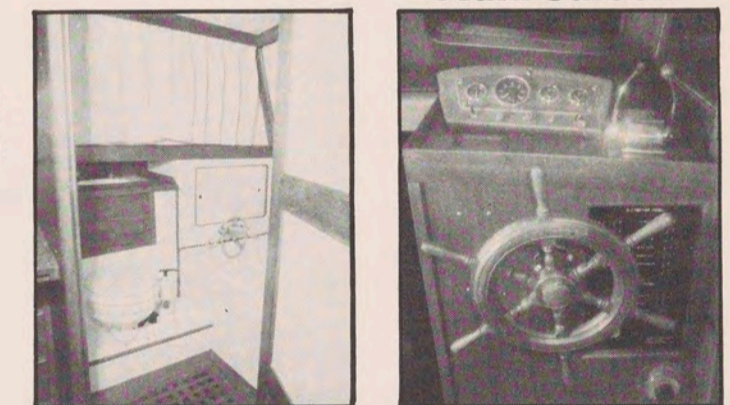
Forward Cabin



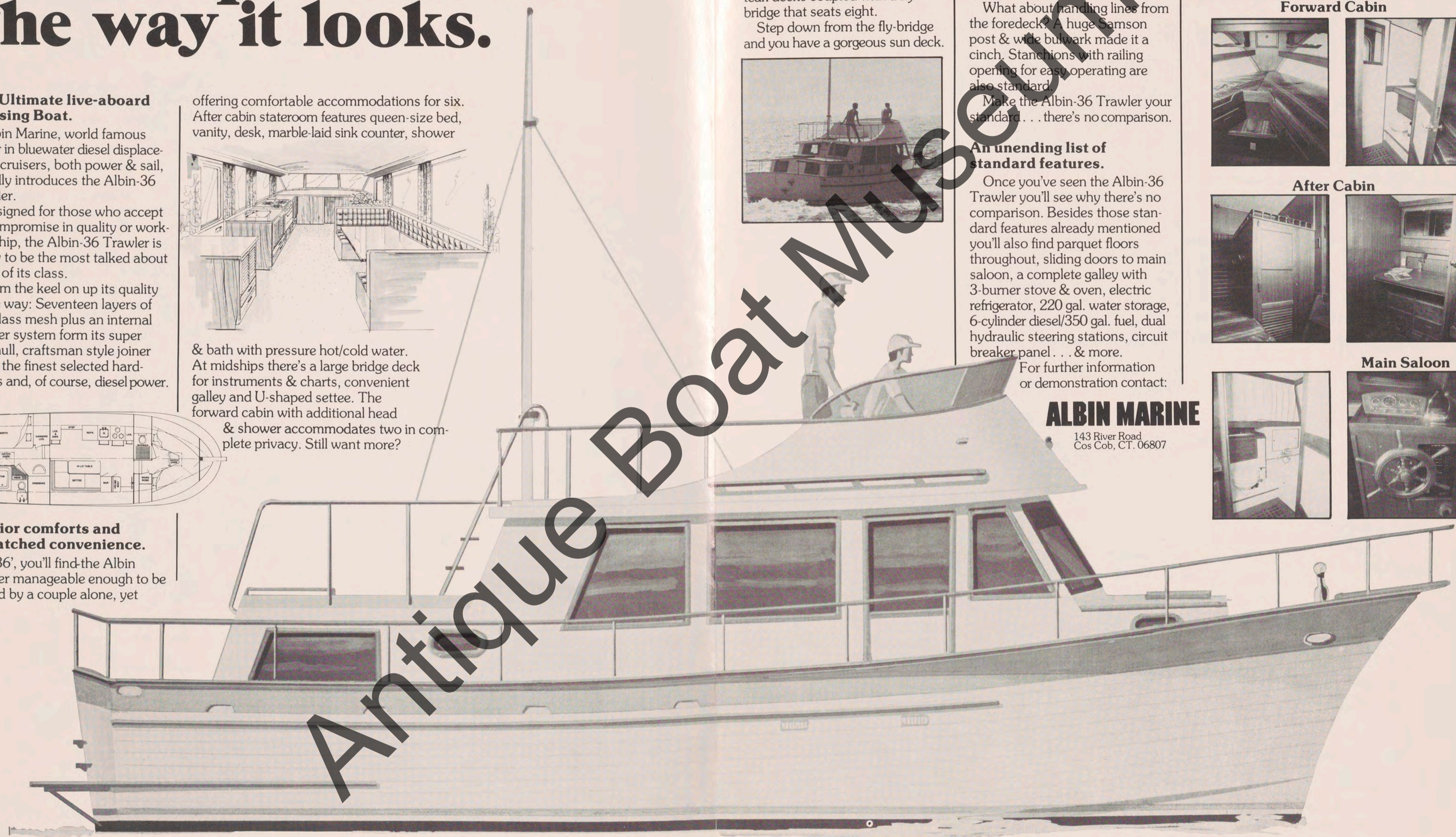
After Cabin



Main Saloon

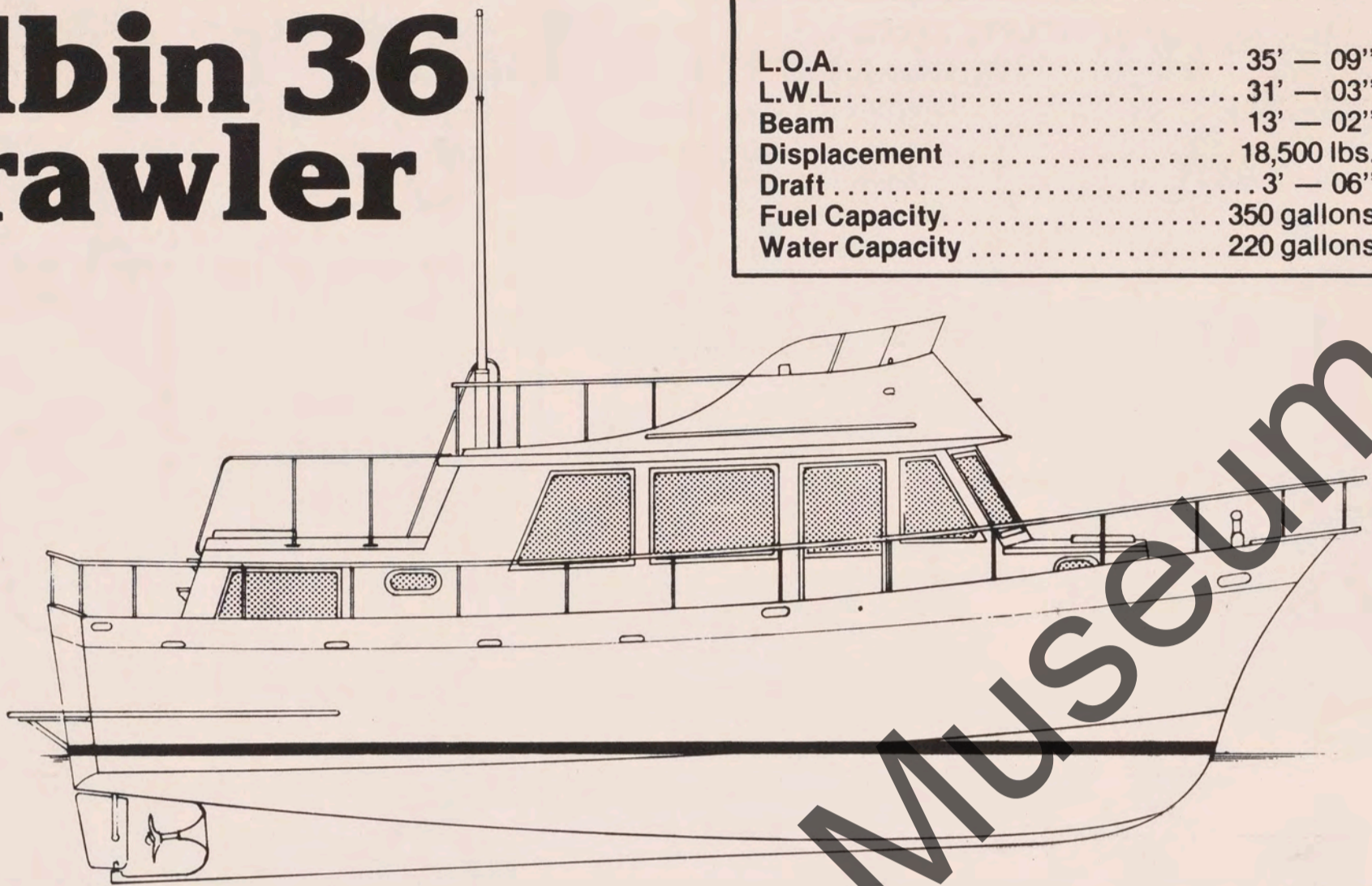


Antique Boat Museum



Albin 36 Trawler

L.O.A.	35' — 09"
L.W.L.	31' — 03"
Beam	13' — 02"
Displacement	18,500 lbs.
Draft	3' — 06"
Fuel Capacity	350 gallons
Water Capacity	220 gallons



ALBIN -36 Trawler After Cabin Model — Standard Features:

Ford-Lehman 6-Cylinder diesel, 120 H.P., fresh water cooling, reduction gear, primary and secondary filters
Dual battery system (12 volt heavy duty)
Circuit breaker panel
Dual hydraulic steering stations with duplicate electric gauges
Hot and cold pressure water

After Cabin:

Queen size bed
Large hanging locker
Opening desk
Head with bathtub, shower, teak grating, toilet and sliding stainless steel sink set in marble counter top
Sliding door to main saloon.

Main Saloon:

Dining area with teak hi-lo table
Complete galley with 3-burner stove and oven, electric refrigerator, stainless steel sink
Liquor cabinet with ample storage
Helmsman seat and handcrafted steering wheel
Large stand-up chart table
Two sliding doors to deck area

Forward Cabin:

Two full length berths
Wardrobe
Head with toilet, shower, teak grating stainless steel sink set in marble counter top
Fly Bridge with seating for eight, and teak rail caps all around
Top quality decorator fabrics on all mattresses with 4" foam cushions
Curtains
Parquet floors throughout
Hand-laid teak decks including flying bridge deck
Opening windows and windshield
Electric bilge pump system
Heavy duty sampson post with anchor roller and hawse pipe.
Wrap-around stanchions with teak rail caps
Opening handrails
Mast, boom and gooseneck with rigging
Full width swimming platform
Opening hatches

PRICES AND SPECIFICATIONS ARE SUBJECT TO CHANGE WITHOUT NOTICE.

ALBIN MARINE, INC., RIVER ROAD, COS COB, CONNECTICUT 06807 (203) 661-4341

9-77



ALBIN MARINE