

# AIRBOY



Antique Boat Museum

*First in*

*Air-Drive Boats & Motors*

## Welcome to Airboating . . .

Airboating is the most carefree form of boating there is. Not only can you go virtually anywhere it's wet (and many places it isn't) but you can go in perfect safety. No danger from loss of **power** and **steerage in shallow channels**. Weeds, shallow water, drift, underwater objects are no longer any problem. Since all AIRBOY boats and motors are not only air propelled but also air steered and air cooled, there is no danger of losing power and steerage if the water becomes too shallow or of water freezing in the engine or other parts on cold nights.

### GET AWAY FROM THE CROWDS . . .

With these days of more and more boats and crowded waterways, airboaters are finding particular pleasure in the yet unspoiled places they can reach—places where **NOTHING** but an airboat can follow.

### LIGHTWEIGHT—EASILY TRANSPORTED . . .

AIRBOY has switched to all aluminum hulls not only for minimum maintenance costs but also for light weight. For example, the 9 H.P. Cub weighs only 250 lbs., the 65 H.P. Special only 680 lbs., and the 150 H.P. Sportster only 960 lbs. This makes trailering and boat handling a breeze!

Look the following pages over carefully and we're sure you'll find an AIRBOY motor or boat to fit your needs perfectly.

Best Wishes for Better Boating from **YOUR AIRBOY DEALER!**

**AIRBOATS, INC.** • 3323 N. Florissant Ave. • St. Louis 8, Mo.

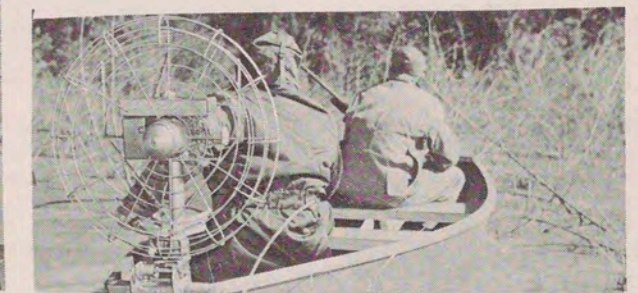
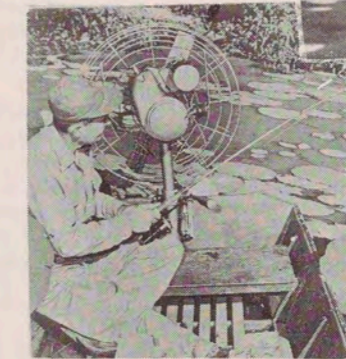
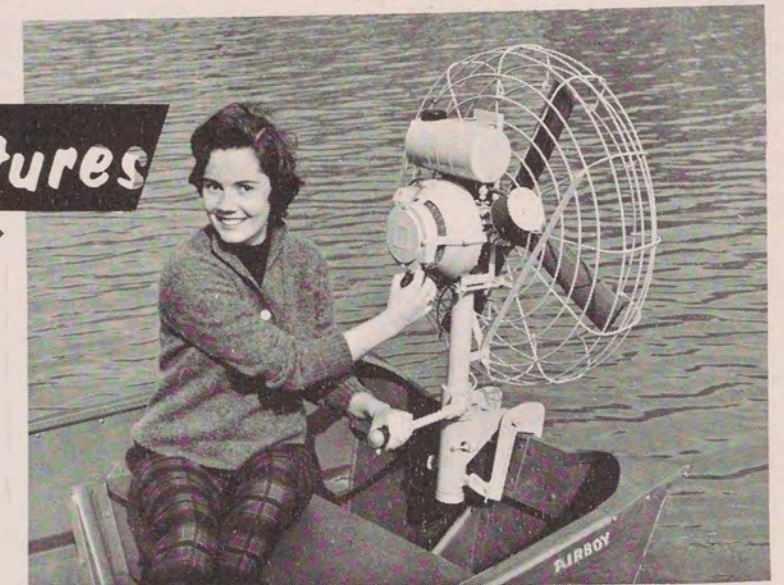
**AIR-PROPELLED! AIR-STEERED! AIR-COOLED!**



## AIRBOY Outboard Features

AIRBOY Outboards were introduced in 1954. They were the result of years of experimentation and development. Since then, many improvements have been made so that the present AIRBOY Outboards are the ultimate in detachable airdrive motors. The following are some of the most popular features found on every AIRBOY outboard.

1. Twist-grip throttle
2. Rubber motor mounts
3. Transome angle adjustment to fit "AIRBOY" to any boat transom.
4. Reverses by means of a full 360 degree steering range.
5. Special airdrive mounting bracket with thumb screws to the rear and the longer part of the bracket extending far enough down inside the transom to withstand thrust from above rather than below the boat.
6. Tiller Arm can be raised for easy, compact transportation.
7. Friction brake type turning tension adjustment.



**Fishing, hunting, canoeing, ice sledding, or just relaxing, you will find that AIRBOY Outboards offer the most in versatile performance!**

## Versatile Performance with any type of boat!

### PERFORMANCE

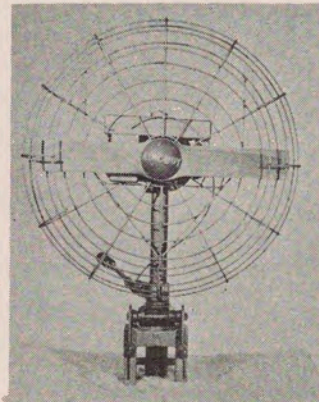
Airdrive outboards will not give speeds equivalent to waterdrive outboards although they are comparable. For example: The Model 20 will produce about the same speed as a 1 to 1½ H.P. waterdrive outboard; The Model 50 as a 2½ to 3 H.P.; and the Model 90 as a 4½ to 5 H.P. waterdrive outboard. It must, however, be borne in mind that not all waterdrive outboards of the same horsepower give the same speed. To obtain the best possible speeds from Models 20 and 50, use a long narrow boat, rather than a short broad one. A canoe is ideal. If Model 90 is used on a boat similar to the Cub in design and weight, it should plane one person in shallow water. This motor has approximately twice the thrust of the Model 50. Since an airdrive motor does not

have to extend into the water, it can be mounted inside the boat. This advantage permits mounting on regular canoes without square sterns — also makes them ideal for auxiliary power since they can be mounted anywhere.

### AWAY FROM CROWDED WATERWAYS

With waterways becoming more and more crowded, many people are finding boating no more relaxing than driving on crowded highways — not so with airboats — they are finding many beautiful sections of rivers and lakes never before accessible except by airboats — places away from the crowds where one can fish, swim, or hunt, and truly relax.

## AIRBOY Model 20 —2 H.P.



Fuel Tank Capacity: 1 1/2 quarts  
Run. Time: 1 hr. (at full speed)  
Type of Fuel: Gas & oil mixed  
Prop Diameter: 26 inches  
Number of Blades: 2  
Guard Diameter: 28 inches  
Muffler: Ring type  
Weight: 38 lbs.  
Number of Cylinders:  
Engine: 2-cyc. Power Products  
Starter: Automatic Recoil

Price: **\$179<sup>50</sup>**

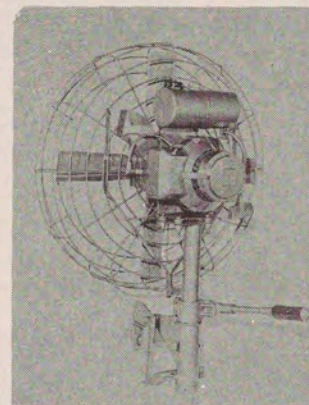
All Prices F.O.B. St. Louis—  
Subject to change w/o notice.

## AIRBOY Model 50 —5 H.P.

Fuel Tank Capacity: 2 Quarts  
Run. Time: 1 hr. (at full speed)  
Type of Fuel: Gas & oil mixed  
Prop. Diameter: 26 inches  
Number of Blades: 4  
Guard Diameter: 28 inches  
Muffler: AIRBOY Silent Sonic  
Weight: 47 lbs.  
Number of Cylinders: 1  
Engine: 2-cyc. Power Products  
Starter: Automatic Recoil

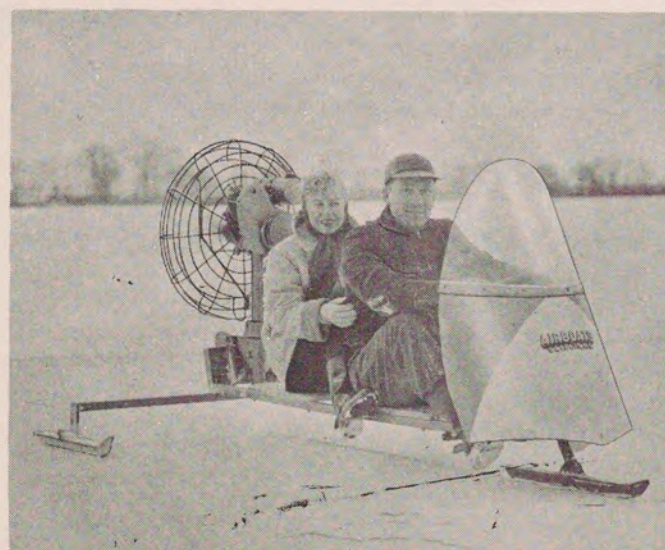
Price: **\$239<sup>00</sup>**

All Prices F.O.B. St. Louis—  
Subject to change w/o notice.



These are the motors that have proven so popular because of their light weight and relative quietness. Although not recommended for rivers with swift current, they will do an excellent job in lakes, marshes and slow-moving rivers. Ideal for use on canoes, pirogues or other boats of a tippy nature, on which a motor is desired. Since AIRBOY Outboards do not depend on the water for cooling, steering, or propulsion, and since all AIRBOY Outboards have a full 360° steering range, they can be mounted for efficient operation virtually any place large enough to clamp them whether it be the transom, canoe gunwale, or a cabin wall when used for auxiliary power on cabin boats.

## Enjoy Winter Fun with the AIRBOY Ice Sled



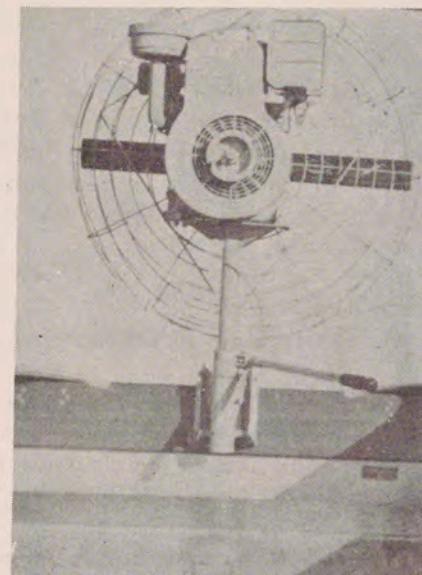
**A lightweight tubular steel two passenger sled built for use with AIRBOY Outboards. Get speeds in excess of 40 m.p.h. for winter sport at its best.**

- Rocker Mounted Runners ● Seats for two ● Plexiglass Windshield
- Spring Suspended Front End ● Automatic Tilting Front Runner
- Airplane Type Steering Wheel ● Remote Throttle
- Ice Brake for Fast Stops ● All Steel Construction
- Length: 7 ft. ● Runner width: 4'6" ● Weight: 84 lbs.

PRICE, equipped as shown, Less Motor **\$139<sup>00</sup>**

With Upholstered Seats

All Prices F.O.B. St. Louis—Subject to change without notice.



## AIRBOY Model 90 —9 H.P.

Fuel Tank Capacity: 2 1/2 gallons  
Running Time: 1 3/4 hrs. (at full speed)  
Type of Fuel: Straight gas  
Prop. Diameter: 36 inches  
Number of Blades: 2  
Guard Diameter: 38 inches  
Muffler: Briggs-Stratton  
Weight: 148 lbs.  
Number of Cylinders: 1  
Engine: 4-cycle Briggs-Stratton  
Starter: Rope or crank

The new Model 90 AIRBOY is the motor that so many people have been asking for. Capable of pushing upstream against the current of most rivers, they are the most powerful airdrive outboards made to date. Dependable 4-cycle 1-cylinder Briggs-Stratton engine is famous for its economy, dependability, and quietness. If you need an airdrive outboard with more power, the Model 90 is for you. Recommended for use on boats at least 32 inches wide on the bottom and 14 feet long. Available with remote throttle tiller arm and stick-type steering for front seat control.

Price: (with steering arm and twist grip throttle) **\$395<sup>00</sup>**

Extra: (with remote throttle, tiller arm, and stick-type steering assembly) **\$24<sup>95</sup>**

All Prices F.O.B. St. Louis—Subject to change without notice.

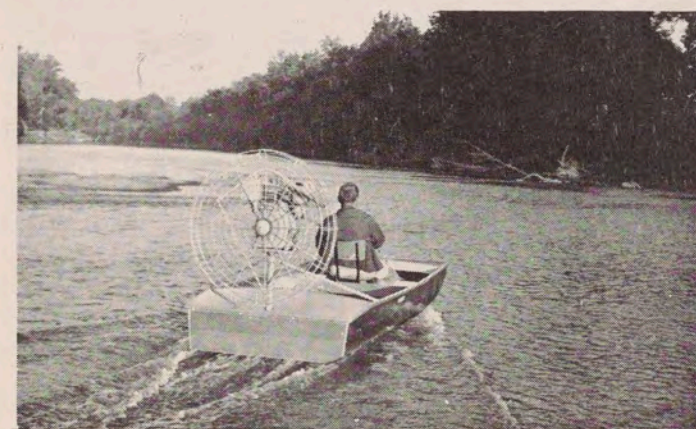


## The All-Aluminum AIRBOY Cub

**Most Versatile Boat in the Low Cost Field!  
Boat in Summer — Sled in Winter**

The new AIRBOY Cub was especially designed for use on shallow rivers and lakes, weed-infested waters and marshes as well as on ice or from water to ice and vice versa. Will easily climb from water to ice with four adults or can break through ice into water with perfect safety. Performs easily in only one inch of water! Ideal for all-around fishing, duck hunting, club or sport group use. Two full width seats accommodate four people. Heavy .064 all-aluminum construction for years of rugged use. Aircraft type stick steering with remote control throttle can be operated with knees to free hands for fly fishing, casting trolling, etc. Five extra heavy aluminum external keels for extra protection.

Construction of the two outer keels is such that steel ice runners can be attached in minutes for continuous and most efficient operation on ice. Foot operated ice brakes that provide positive stopping action are also available. Since the Cub is primarily a boat, there is no danger on thin ice, making hunting, ice fishing and ice boating possible many times when it would be impossible otherwise.



### Performance

The Cub with one person will run in a semi-plane in deep water at a speed of 9 to 10 m.p.h. with the 9 H.P. engine and 10 to 12 m.p.h. with the 12 H.P. engine, but when run in water a foot or less deep, will plane off nicely and attain speeds up to 15 m.p.h. with the 9 and up to 18 or 20 m.p.h. with the 12. Since most swift water is shallow, it means the Cub will take you virtually anywhere you want to go, and the shallower the water, the quicker you'll get there.



### Specifications

	9 H.P. Cub	12 H.P. Cub
Length:	11'6"	11'6"
Beam:	55"	55"
Weight:	275 lbs.	315 lbs.
Engine:	1 cyl., 4-cyc. Br.-Stratton	2 cyl., 4 cycle Onan
Starter:	Rope or Crank	Automatic Recoil
Price:	<b>\$845<sup>00</sup></b>	<b>\$995<sup>00</sup></b>

Extras: Ice Runners: \$25.00 Ice Brakes: \$37.50  
Stainless steel prop tips recommended for boat used on ice \$15.  
All prices F.O.B. St. Louis—Subject to change without notice.  
Packing Charge: \$10.00.

# The Ultimate in Fine Air-Drive Boats . . .

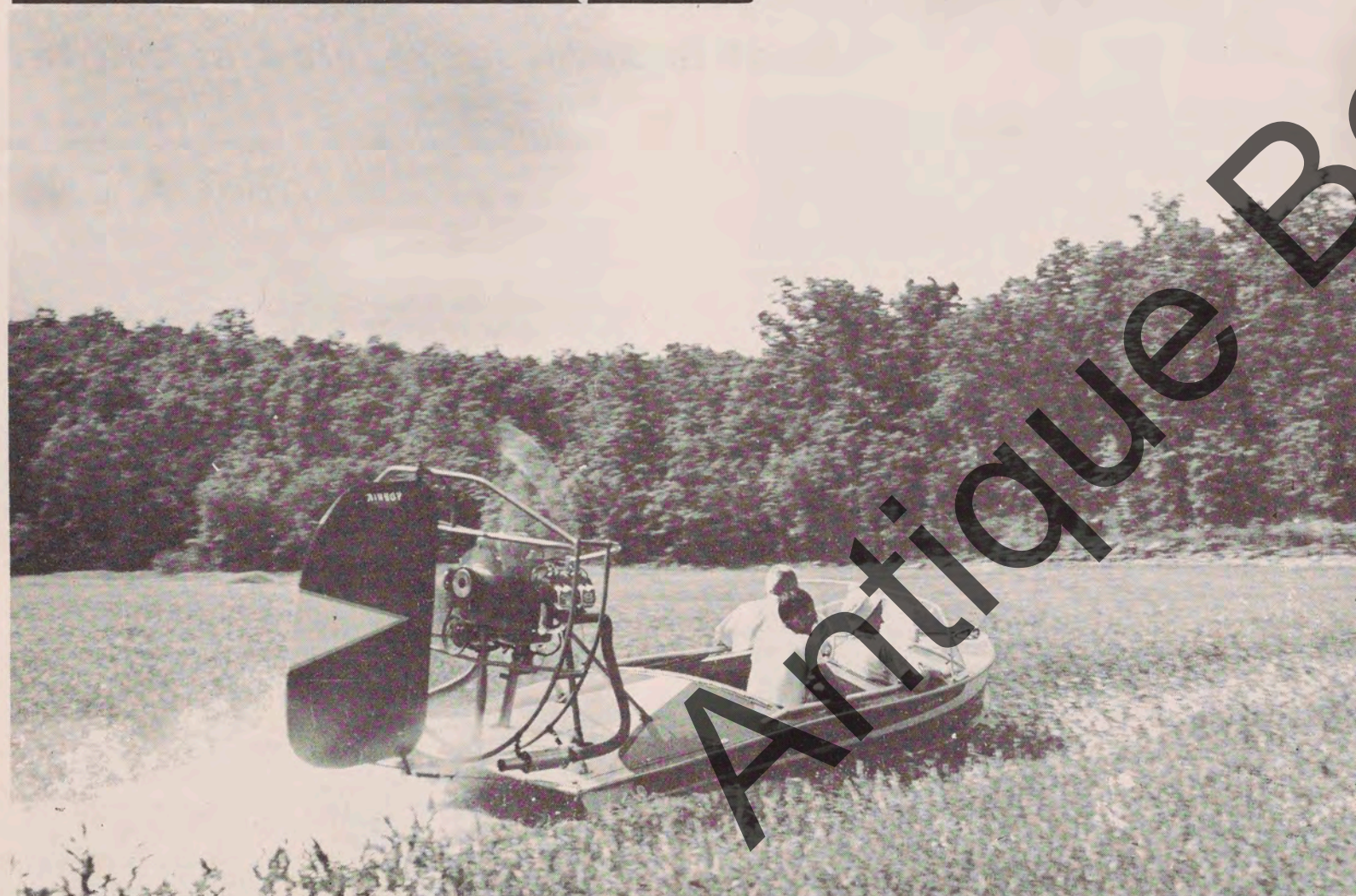
The SPECIAL and SPORTSTER are the ultimate in airdrive boats. Their "V d" bottom up front and flat bottom in the rear make it possible to run not only in the deepest waters where roughness is often encountered but also in as little as an inch of water without touching bottom. Hulls of a special tough saltwater resistant aluminum give maximum strength, lightest weight, and minimum maintenance. Five heavy duty external aluminum keels afford added protection to the .072 thick bottom when running over gravel bars, mud flats, logs, ice, etc. Aluminum rudder, which operates in the air independent of the water, provides full time steering. Special bottom designed to operate with peak efficiency with thrust above rather than below the boat.

Included as stock equipment are 12 volt starter and generator, all necessary controls and instruments, running and dash lights, windshield and deluxe two-tone upholstery and paint job.

Because they are aircraft engines they provide the most in dependable power with maximum economy. Being aircooled, there is never any danger of freezing. Special AIRBOY mufflers and exhaust system hold engine noise to a minimum.

A special feature available on the Sportster is the fiberglass half top with a plexiglas rear window which makes a fairly sound proof cabin. The fiberglass top ends at the front seat back and a canvas top is available to cover the front seat area when desired as well as side curtains for use in bad weather.

## The AIRBOY Special



## The AIRBOY Sportster



Airboats never lose their power or steering even on dry land. Here the Sportster crosses a large island with power to spare. Light overall weight also adds to this ability.



### AIRBOY Special

Length: 14'; Beam: 62"; Speed: 34 m.p.h.; H.P.: 65  
 Planing Capacity: 5 adults; Wt. 680 lbs.  
 Fuel Consumption: 3 to 4 gallons per hour

Price complete with engine especially **\$2695<sup>00</sup>**  
 rebuilt for airboat use -----  
 Priced with new engines on request.

#### OPTIONAL EQUIPMENT

Shipping Cradle ----- \$50.00  
 Oil Cooler Installed ----- 60.00  
 Cockpit & Engine Covers ----- 85.00  
 All Prices F.O.B. St. Louis—Subject to change without notice.

### AIRBOY Sportster

Length: 16'; Beam: 74"; Speed: 42 m.p.h.; H.P.: 150  
 Planing Capacity: 8 adults; Wt. 960 lbs.  
 Fuel Consumption: 6 to 8 gallons per hour

Price complete with engine especially **\$3295<sup>00</sup>**  
 rebuilt for airboat use -----  
 Priced with new engines on request.

#### OPTIONAL EQUIPMENT

Fiberglass Top with Plexiglas Rear Window ----- \$245.00  
 Canvas Front Top ----- 37.50  
 Side Curtains with Clear Plastic Windows ----- 49.50  
 Shipping Cradle ----- 55.00  
 Cockpit & Engine Covers (For use without top) ----- 85.00  
 All Prices F.O.B. St. Louis—Subject to change without notice.

# AIRBOATS, INC.

3323 N. Florissant Ave. • St. Louis, Mo.

*You'll Enjoy Boating More with*

# AIRBOAT

• AIR-PROPELLED

• AIR-STEERED

• AIR-COOLED

WARRANTY CERTIFICATE FURNISHED WITH EACH PRODUCT.



*Year-Round Sport & Pleasure!*

**AIRBOATS, INC.**  
3323 N. Florissant Ave. • St. Louis, Mo.

Antique Boat Year