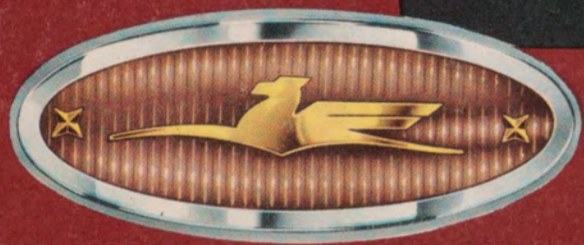


JOHNSON

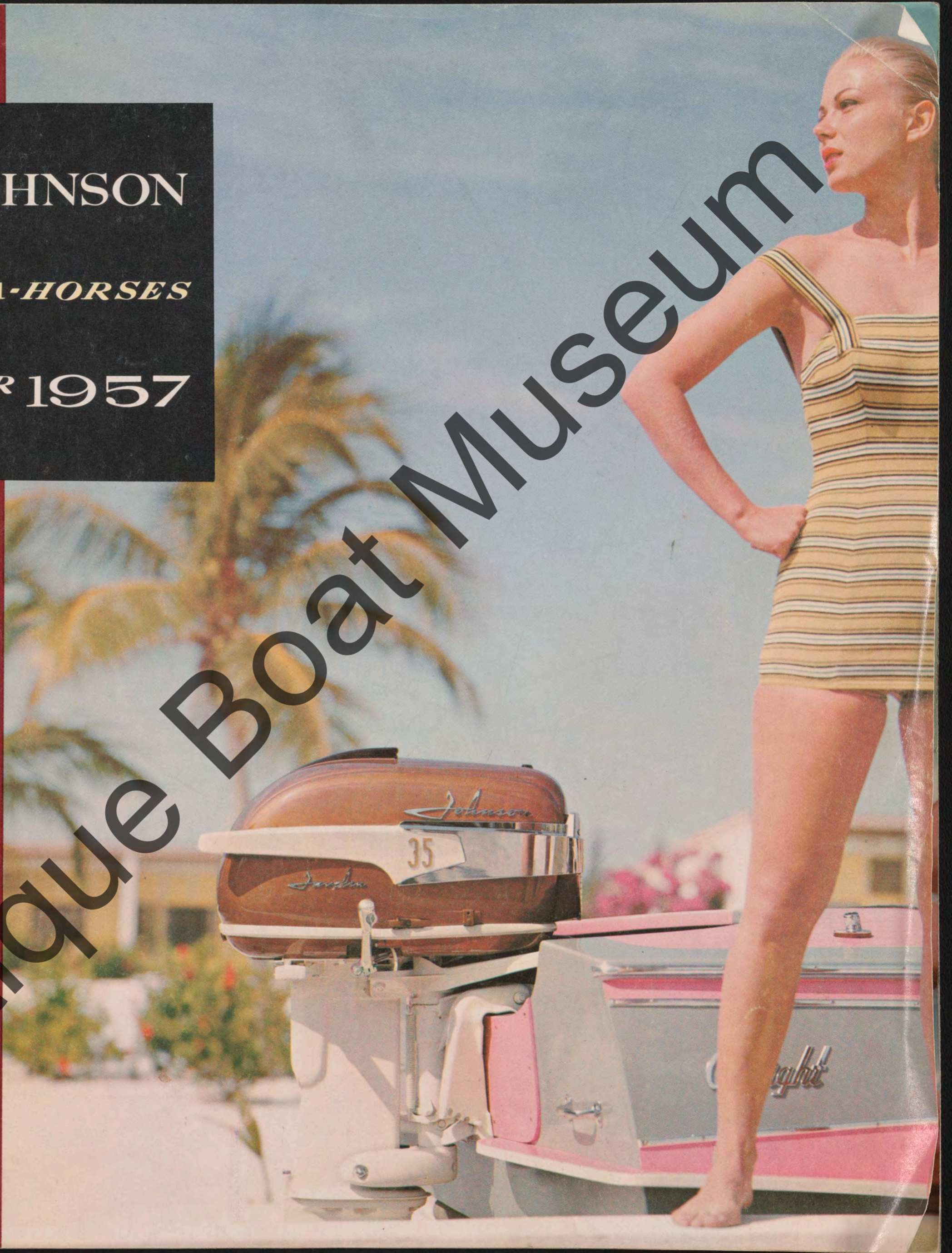
*SEA-HORSES*

FOR 1957



THE ANTIQUE BOAT MUSEUM  
200 W. 57th STREET  
GLAYTON, N.Y. 13624

Antique Boat Museum



STYLED IN BEAUTY



... ENGINEERED FOR

DEPENDABLE PERFORMANCE

# Sweetest-Running Johnsons Ever...

9

WONDERFUL NEW MOTORS



Swim-wear and play-clothes by Catalina.

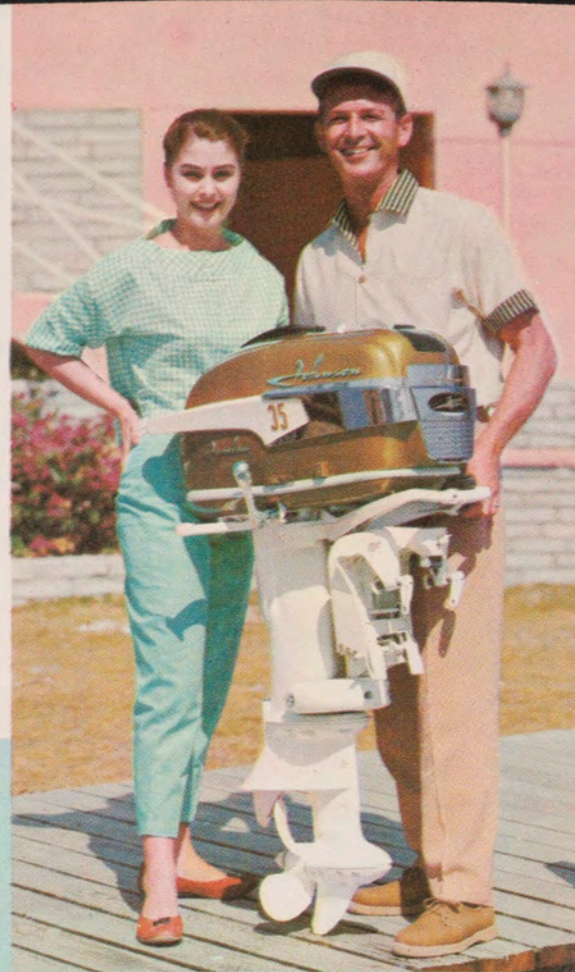
Antique Boat Museum



WOLVERINE

THE NEW

Golden



AMERICA'S MOST BEAUTIFUL OUTBOARD MOTOR!

Javelin

35

HORSEPOWER

A smart new combination of gleaming gold, polished chrome and spray white announces the arrival of the mighty Golden Javelin . . . a great new motor that again tops Johnson's own leadership in outboard styling. See for yourself. See the sleek modern sweep of chrome to conceal and protect controls . . . bold and handsome strokes of gold insignia, the shining white lower unit, and the over-all dignity of clean design. Performance? It's a smooth, quiet surge of power that'll put your boat right on top, and make it *stay* there, even with an outsized load! Some motors of *greater* rated horsepower can't even match this performance! Features? Each modern improvement, from Suspension Drive to Push-Button Electric Starting, as well as authentic fuel economy and the new Safety-Master Slip-Clutch propeller. Go first-class for 1957 . . . Go Johnson . . . with the golden treasure of them all, the sparkling new *Golden Javelin!*

NOW! Sensational new quick-charging 12-volt POWER-MASTER generator, complete with automatic voltage regulator. Optional on Golden Javelin and Sea-horse 35 (electric starting).





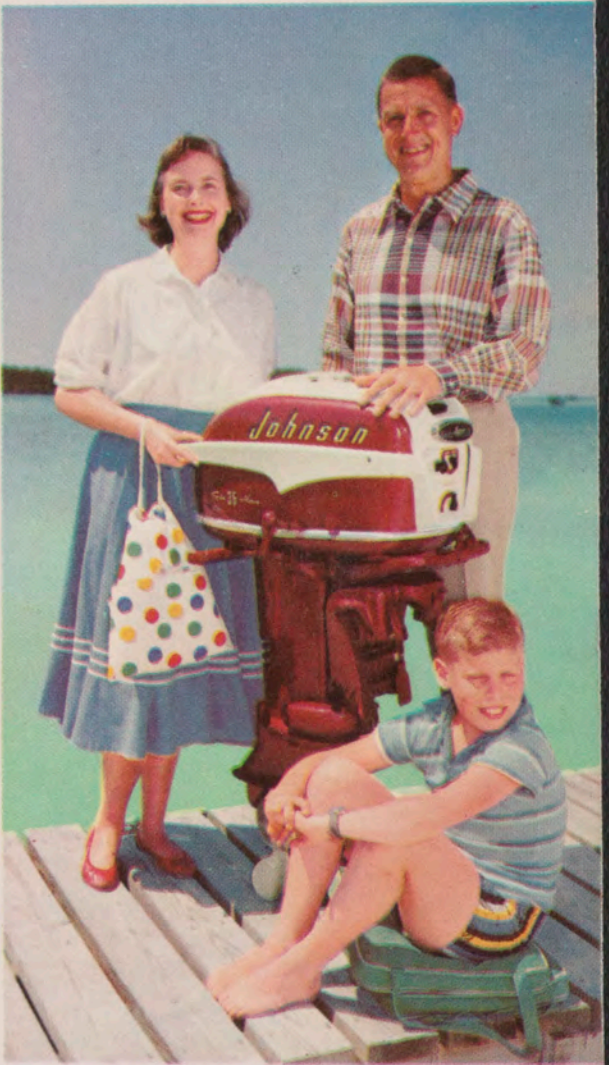
THE WHOLE FAMILY CAN *Relax* WITH ELECTRIC STARTING . . .



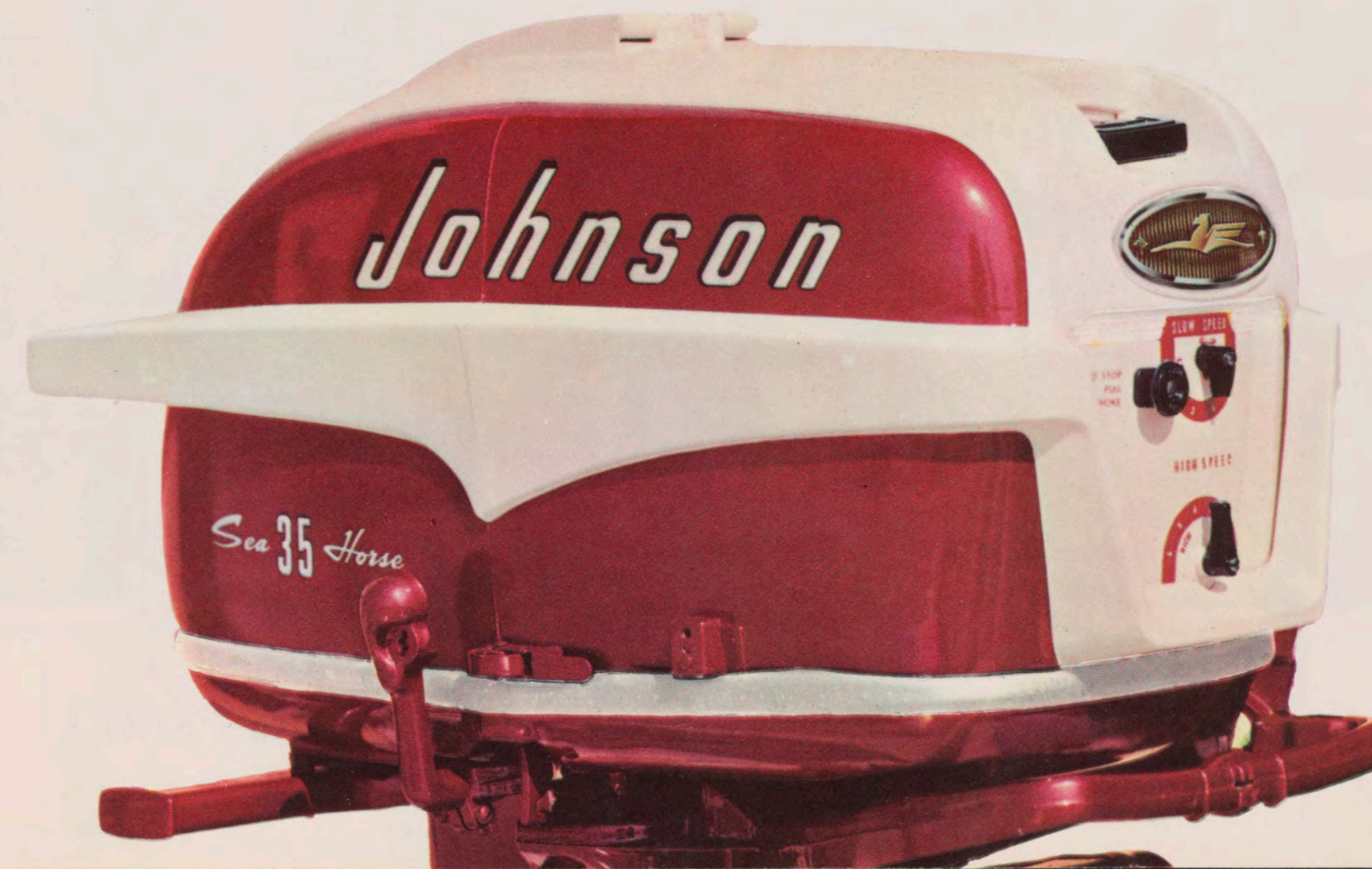
This is the power you *really* need for fleet cruisers, for high-stepping heavy runabouts and top-action water-skiing. It's *command performance* that truly invites comparison! Styled in beautiful Holiday Bronze and Spray White, the dependable new Sea-horse 35 is engineered to give you *more* miles per gallon, *more* miles per hour with average loads . . . and proud new performance that really shines with *heavier-than-average* loads. And, for 1957, all the big Sea-horses are equipped with the new Safety-Master Slip-Clutch propeller—shear-pin worries are ended forever! Automatic Fuel-Saver for *real*, not "claimed," economy. Smoother, quieter *relaxed* control with instant electric starting at the mere touch of your finger! For the skipper who likes to take it easy . . . who likes to take the *whole* family along, the Johnson Sea-horse Electric Starting 35 is the answer in '57!

# JOHNSON

## SEA-HORSE



NOW! Sensational new quick-charging 12-volt POWER-MASTER generator, complete with automatic voltage regulator. Optional on Golden Javelin and Sea-horse 35 (electric starting).



DEPENDable THIRTY-FIVE HORSEPOWER . . . Lightning-swift 12-volt electric starting . . . New Quick-Plug electrical system . . . Also equipped for manual starting, with new automatic compression relief system—starts easily as motors one-half its size! . . . Full-range silencing, with vibration-free cushion mounting system . . . Safety-Master Slip-Clutch propeller protection . . . For convenience, *no other* outboard motor hood can compare with Johnson's efficient up-and-off hood . . . Automatic Fuel Saver to cut fuel consumption by 20% or more . . . Full gear shift—forward, neutral, reverse . . . Fully water-proofed ignition system . . . Idle-Easy throttle stop . . . Rugged carrying handle . . . Scientifically protected against fresh and salt-water corrosion . . . Fitted for Ship-Master Remote Control . . . Six-gallon Mile-Master Fuel System included with motor. For details, see last page.

A NEW ADVENTURE IN PERFORMANCE

*With Every Ride!*



AMAZING NEW EASY STARTING... EASY AS MOTORS HALF ITS SIZE!



Dollar for dollar, or horsepower for horsepower, no outboard motor today can match the Sea-horse 35 as a smart, economical buy! Every feature gives you dazzling high-speed performance—real, big-load ability. Every feature spells operating safety and economy. It is designed and priced for the man who wants top-quality power in a motor that will look better than any other outboards on the water! Tough, load-lugging performance . . . and traditional Johnson **DEPENDability** have always made **JOHNSON** the choice for commercial men all over the world. This year, the *best* motor is even *better*. The choice for '57 will be Johnson . . . and a smart buy is the great Sea-horse 35!

# JOHNSON

## SEA-HORSE

**35**  
HORSEPOWER

NEW! Automatic Compression Relief System makes manual starting as easy as motors half its size! A COMFORT BONUS!  
Automatic Fuel Saver can cut consumption 20% or more at cruising speeds. Save one gallon in every five! A DOLLAR BONUS!  
NEW! Safety-Master Slip-Clutch propeller. Ends shear-pin troubles forever! A SAFETY BONUS!



**DEPENDable THIRTY-FIVE HORSEPOWER . . .**  
New Automatic Compression Relief System, for easier starting . . . New Safety-Master Slip-Clutch propeller protection . . . Full-range silencing, with vibration-free cushion mounting system . . . Automatic Fuel Saver to cut fuel consumption 20% or more . . .  
For convenience, *no other* outboard motor hood can compare with Johnson's efficient up-and-off hood . . . Full gear shift—forward, neutral, reverse . . . Twist-Grip Speed Control . . . Fully water-proofed ignition system . . . Idle-Easy throttle stop . . . Rugged carrying handle . . . Scientifically protected against fresh and salt water corrosion . . . Fitted for Ship-Master Remote Control . . . Six-gallon Mile-Master Fuel System included with motor. For details, see last page.

The silk-smooth Sea-horse 18 is a newcomer to the Johnson line for 1957, and it's a star performer packed with surprises! Versatility and adaptability are its middle names! Name your boat, and this sturdy new Sea-horse is ready to report for duty. Excellent as the "big" motor for teen-agers . . . and it's just perfect for skiing for the young folks, too. Another surprise, it is reliable power for the new, featherweight small outboard cruisers and cruisettes. Smooth-running and mighty quiet, this new addition to the Johnson line is a real front-runner among middle-range horsepower outboards. Just look at the features listed across the page . . . plenty of surprises in the fleet new 18!



# JOHNSON

## SEA-HORSE

ELECTRIC OR  
MANUAL STARTING  
**18**  
HORSEPOWER



Men who know outboards check every feature in the new Sea-horse 18, and find everything that the BIGGEST motors usually have. Best feature of all . . . as usual . . . Johnson DEPENDability!



# Star

# Performer

ON CRUISER OR RUNABOUT



DEPENDable EIGHTEEN HORSEPOWER . . . Two models—electric or manual starting . . . New Safety-Master Slip-Clutch propeller protection . . . Full-range silencing, with vibration-free cushion mounting system . . . Balanced-Pull easier manual starting . . . For convenience, *no other* outboard motor hood can compare with Johnson's efficient up-and-off hood . . . Full gear shift—forward, neutral, reverse . . . Twist-Grip Speed Control . . . Idle-Easy throttle stop . . . Sealed Power Head . . . Fully water-proofed ignition system . . . Scientifically protected against fresh and salt water corrosion . . . Fitted for Ship-Master Remote Control . . . Six-gallon Mile-Master Fuel System included with motor . . . New 12-volt Quick-Plug-in system on all electric starting 18's. For details, see last page.



FOR 1957: THE SEA-HORSE 18 CAN BE YOURS WITH ELECTRIC STARTING, TOO!



SMOOTH, *Quiet* ... AND CAPABLE



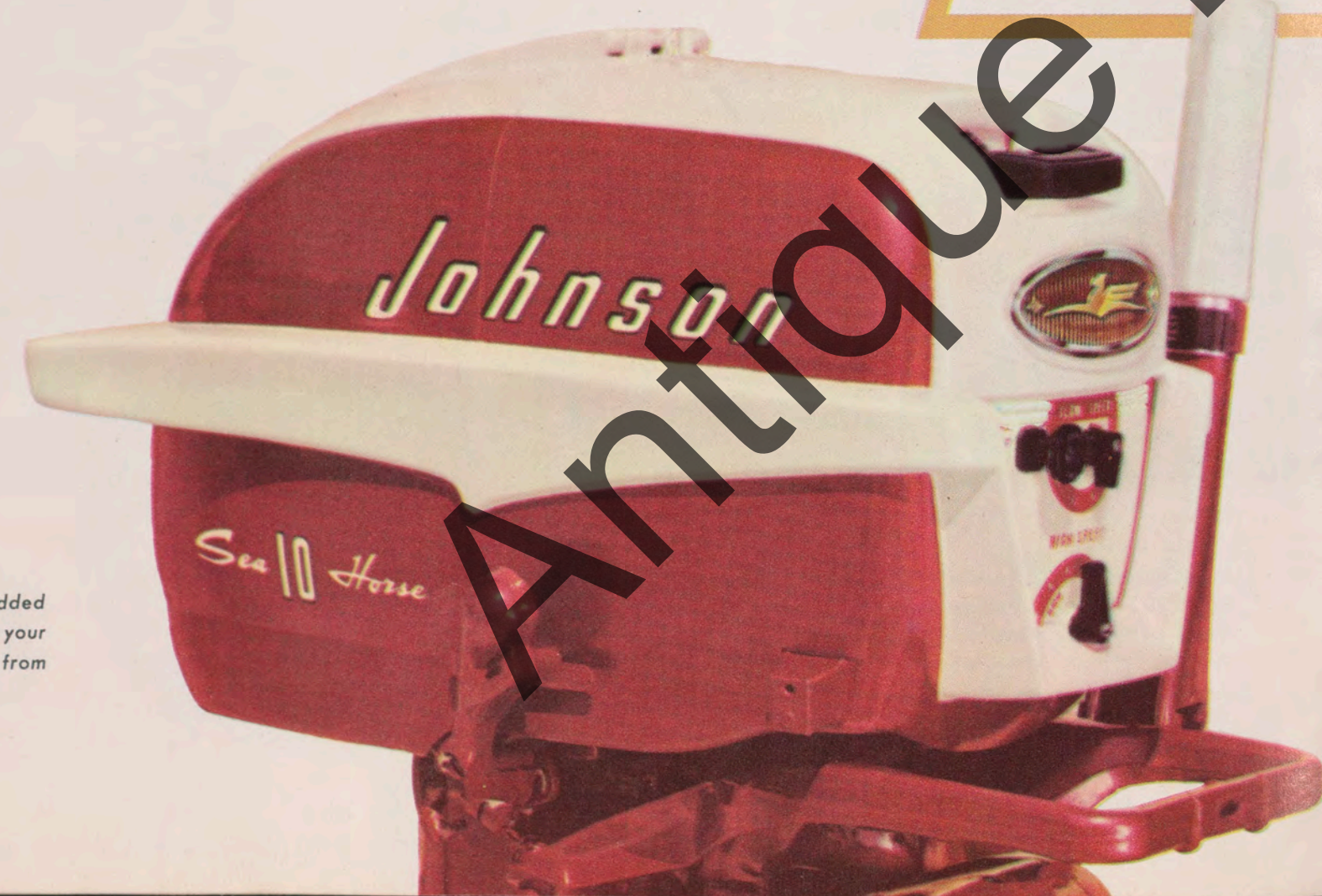
When you want to glide across the shallow flats, tracking an elusive school of tail-waving bonefish—you want a slow, smooth, quiet troll. And when you're in a hurry to hit that favorite fishing hole before the hot sun comes up, you'll want the acceleration and action of a scalded cat . . . but fast. That's the story of the Sea-horse 10, a versatile motor that has won the hearts of sportsmen over and over again. It's a dependable performer with many big-motor features, but still is a portable motor, is easily used on light runabouts, and all kinds of open fishing boats. Mighty easy on the pocketbook . . . to own, to operate . . . and to enjoy!

# JOHNSON

## SEA-HORSE



DEPENDable TEN HORSEPOWER . . . New Safety-Master Slip-Clutch propeller protection . . . Full-range silencing, with vibration-free cushion mounting system . . . Balanced-Pull easier manual starting . . . For convenience, *no other* outboard motor hood can compare with Johnson's efficient up-and-off hood . . . Full gear shift—forward, neutral, reverse . . . Twist-Grip Speed Control . . . Idle-Easy throttle stop . . . Sealed Power Head . . . Fully water-proofed ignition system . . . Scientifically protected against fresh and salt water corrosion . . . Fitted for Ship-Master Remote Control . . . Six-gallon Mile-Master Fuel System included with motor. For details, see last page.



**FISHERMEN NOTE:** In working out the new safety slip-clutch, Johnson engineers added an edged device on the propeller which slices tangled old fishing line as soon as your prop hits it. No more shear-pin worries . . . On ALL 1957 Johnson Sea-horses from the 3 to all 35's!



*Step-up* AND STEP OUT . . .

Keep your eye on the Sea-horse 7½ when you want a portable, dependable motor that will really power the average fishing boat . . . gets you there and back just a little faster . . . smoothly, quietly, and **DEPEND**ably . . . and gives you extra exciting minutes to try for the big lunkers! And, if you like full gear shift, remote control and a long list of other big-motor features . . . you've got 'em in the 7½, a sweet little package of outboard power if there ever was one! And, remember, it's kitten-quiet and mighty, mighty easy to start.



**JOHNSON**

**SEA-HORSE**

**7½**  
HORSEPOWER

Equipped with slip-clutch propeller protection. No more shear-pin worries . . . no more trouble from fish-line tangles on your prop!



DEPENDable SEVEN AND ONE-HALF HORSEPOWER . . . Full-range silencing, with vibration-free cushion mounting system . . . For convenience, *no other* outboard motor hood can compare with Johnson's efficient up-and-off hood . . . Balanced-Pull easier manual starting . . . Full gear shift—forward, neutral, reverse . . . Slip-clutch propeller protection . . . weedless, too . . . Twist-Grip Speed Control . . . Sealed Power Head . . . Scientifically protected against fresh and salt water corrosion . . . Fitted for Ship-Master Remote Control . . . Four-and-a-quarter-gallon Mile-Master Fuel System included with motor. For details, see last page.



If there ever was a motor bearing the name, "fisherman's friend," the Sea-horse 5½ is it! This was the pioneer of all *quiet* outboards, the motor that led the way as the smallest outboard to boast big-motor features . . . the motor that's been takin' 'em there and bringing 'em back for years! When you talk fishin', you're talking about the Sea-horse 5½. Smooth-running, quiet, sturdy, and light enough to go anywhere, the great 5½ can offer more solid pleasure and comfort than ever before. This motor is Johnson through and through . . . superbly dependable performance will show you . . . and keep showing you every year for years to come.



# JOHNSON

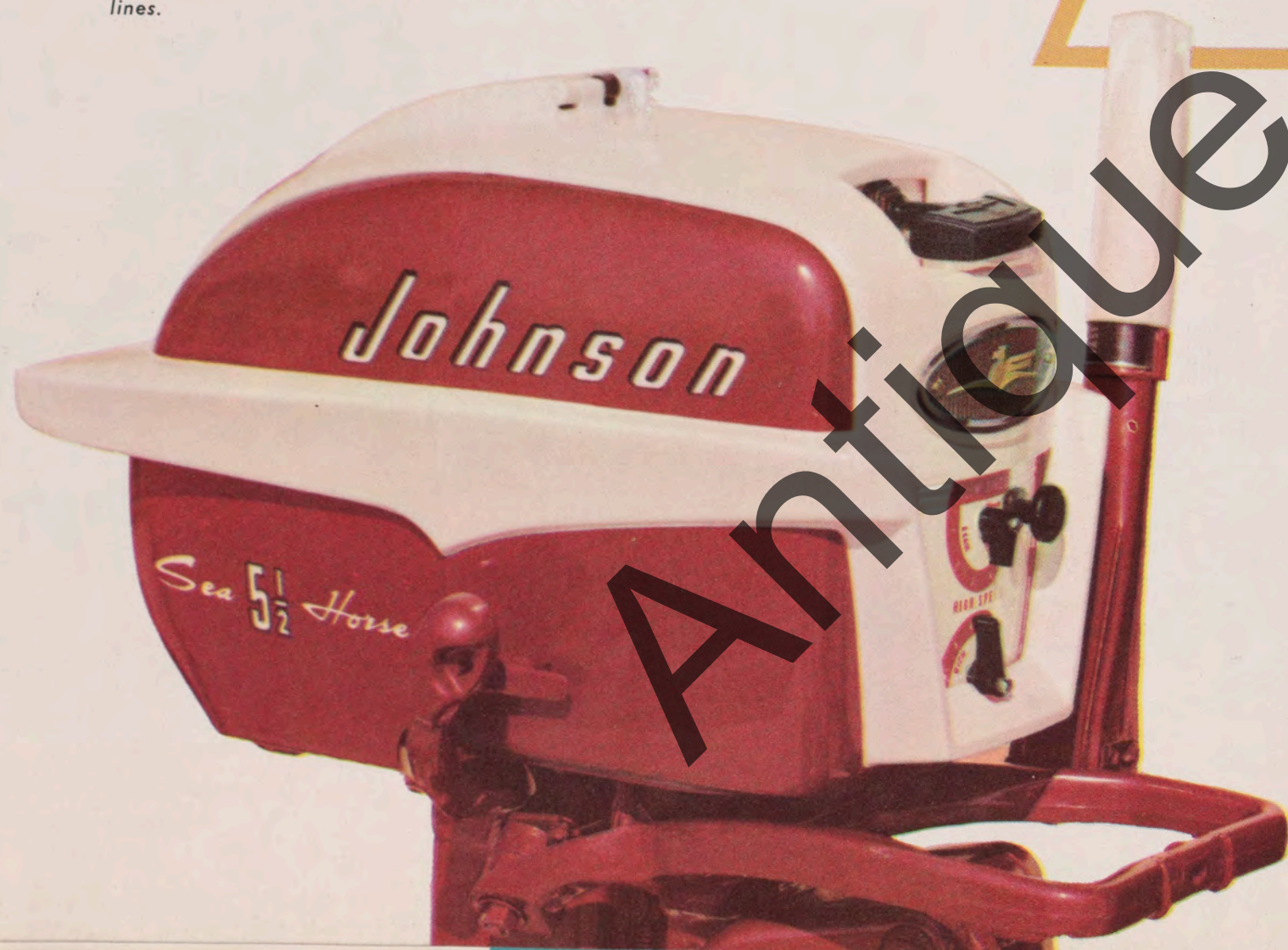
## SEA-HORSE

5½  
HORSEPOWER

*Slip-clutch propeller protection now puts an end to the traditional fisherman's worries and troubles with shear pins and damage caused by entangling old fishing lines.*



DEPENDABLE FIVE AND ONE-HALF HORSEPOWER . . . Full-range silencing, with vibration-free cushion mounting system . . . Balanced-Pull easier manual starting . . . For convenience, *no other* outboard motor hood can compare with Johnson's efficient up-and-off hood . . . Slip-clutch propeller protection . . . Full gear shift—forward, neutral, reverse . . . Twist-Grip Speed Control . . . Sealed Power Head . . . Scientifically protected against fresh and salt water corrosion . . . Fitted for Ship-Master Remote Control . . . Four-and-a-quarter-gallon Mile-Master Fuel System included with motor. For details, see last page.



THE

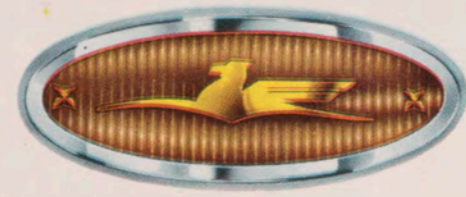
*Choice*

OF FISHERMEN EVERYWHERE . . .



KING  
OF THE

*Lightweights...*

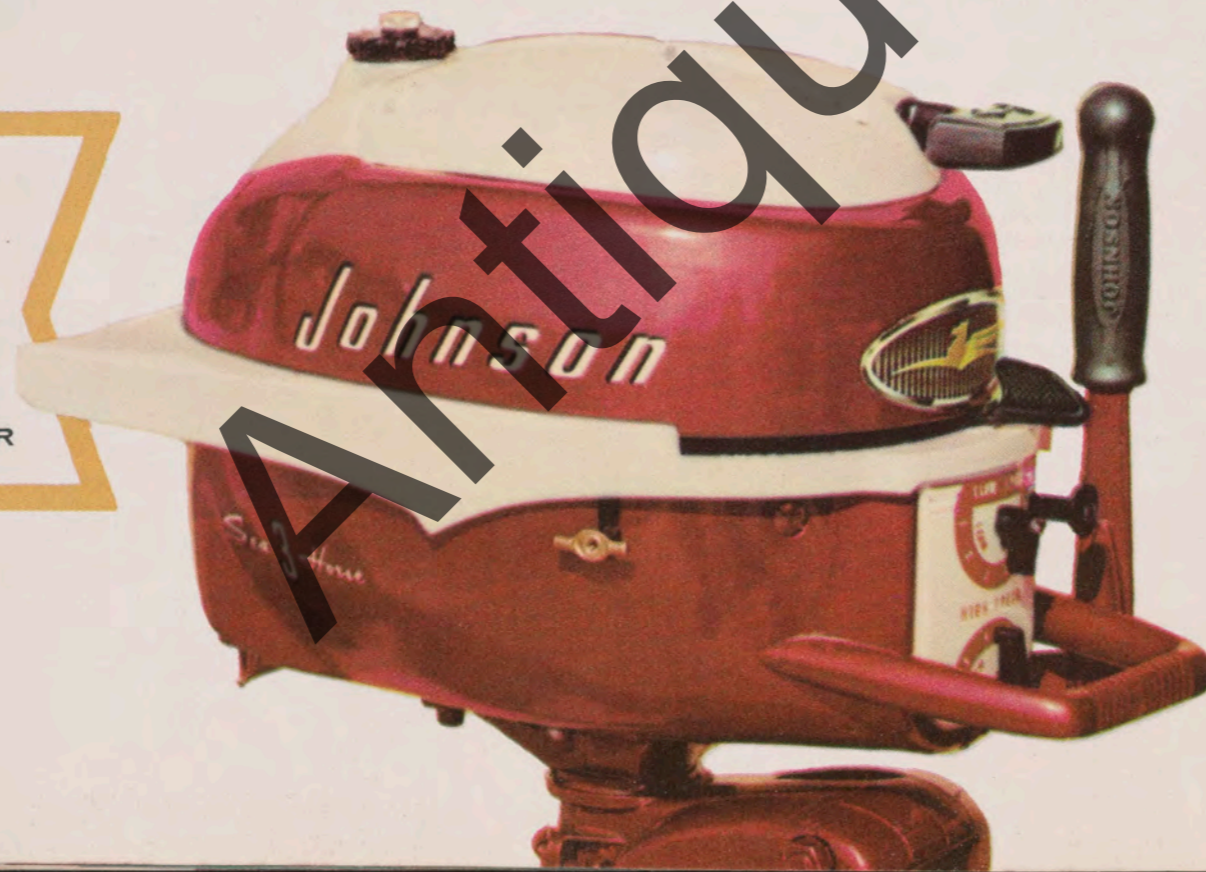


This is the biggest *little* motor a man can own . . . rugged and dependable 3 horsepower packed into a twin that weighs a mere 33 pounds! Perfect power for smaller craft . . . wonderful for children, and, what's more, even the little tikes can start this "littlest Sea-horse."

Fishermen particularly like the slow, slow, smooth trollability of this motor, and the best part about the Sea-horse 3 is its patented Angle-Matic Drive, that can take you through any water that'll float a boat. Amazing performance through tangled underbrush, over submerged logs, across swamps and bogs that would stop the ordinary outboard in a minute.

DEPENDable THREE HORSEPOWER . . . Patented Angle-Matic Drive . . . Balanced-Pull easier starting . . . Slip-clutch propeller protection, weedless, too . . . New front carrying handle . . . Quiet gears and air intake silencer . . . Smooth, quiet acceleration . . . Full-pivot reverse . . . Sturdy construction . . . Weighs only 33 pounds.

**JOHNSON**  
*SEA-HORSE*



Your boat's best performance depends largely upon using the *correct* power. Whether you own a fishing skiff or a large outboard cruiser, you want the best possible service from it.

Regardless of "rated" horsepower, you must buy the *proper* motor for your boat. If your boat "bogs down" with an average load, you have the wrong motor, and you're unhappy about it.

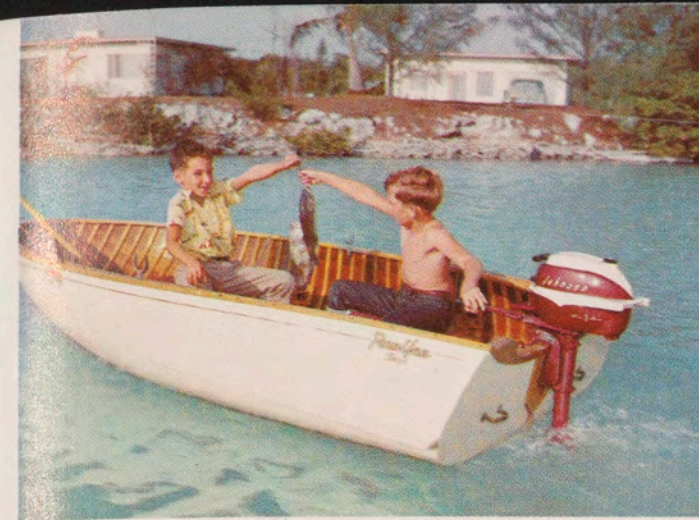
For this reason, and because of the trend in larger, roomier boats, Johnson Sea-horses are engineered with the idea that *load carrying* is of primary importance. You want to see top-notch performance with smooth, responsive acceleration *even as you increase the load in your boat!*

On these two pages you'll see the high degree of versatility in the 1957 line of Sea-horses. Your boat deserves the best—a dependable, *load-carrying* Johnson Sea-horse!

See your Johnson dealer for a boat demonstration. He can help you decide what power will give you the proper and best boat performance for 1957. He's ready, willing, and able to advise you *BEFORE* you buy your new outboard this year.



Dashing through a strong tide-rip off Florida Light, twin 35's do the job with this husky lapstrake 18-footer.



A 9-foot pram, fun for youngsters, and practical for big yachtsmen, is perfectly powered by the Sea-horse 3.



Waterways don't have to be "across the street" any more... not when you have sturdy, smooth-rolling trailers to take your craft wherever you choose.

The husky, surging power of the Sea-horse 35 pulls three water-skiers with ease on a molded plywood runabout.



Smaller runabouts get top-notch performance from medium sized Sea-horses, such as the Johnson 10 or 18.



The twin-18 installation is a practical high-speed application on a broad-beamed aluminum runabout—carrying a good load, too.



WHEREVER YOU GO . . . THERE'S A

*Johnson Sea-Horse*

FOR ANY TYPE OF BOAT!

The whole family enjoys peak performance when twin Sea-horse 35's power this large 20-foot full-cabin outboard cruiser.



Hunters, too, prefer the Johnson Sea-horse . . . this time the smooth-running 7 1/2.



The Sea-horse 10 will plane this light aluminum runabout with ease.



A Sea-horse 18 takes this rugged fiberglass fishing skiff out where the mighty tarpon leap.



Deep-water fishermen head for the Gulf Stream in a hurry when two 35's drive their seaworthy fiberglass 18-foot express cruiser.

THOUSANDS OF

# Commercial Users

CHOOSE JOHNSON TOO!



When a man earns his living with a boat and a motor, his choice of equipment can make the difference between profit and loss. He needs rugged motors—dependable motors—motors built to take a beating! They must have low maintenance cost, long life, and high trade-in value. Above all . . . they must be *dependable!*

So he chooses Johnson Sea-horse as a dependable partner in his everyday work. With him, just as with folks who use Sea-horses for pleasure alone . . . reputations are not claimed . . . they are *earned* through long hours, days . . . and years of performance.

From the men who haul cabbages down the canal-ways of Holland . . . to those who tend lobster pots off the rocky shores of Maine—from men who search dank swamps of the deep South for oil . . . to those who battle spring thaws in lumber camps from New England to the Pacific Northwest—from men who work for the United States Government to those who cast nets for shrimp in the bayous of Louisiana . . . along all the waterways of the world . . . the Johnson Sea-horse is Number One choice for work-horse jobs!

## JOHNSON SEA-HORSES WORK HARD ALL OVER THE WORLD . . .

Logging	National Geological Survey	Vegetable Produce	Tennessee Valley Authority
Fishing	Soil Conservation Service	Freight Movement	Mail Delivery
Oil	U. S. Veterans Administration	Resort Operation	Research
Lobsters	Bureau of Public Roads	U. S. Marine Corps	Surveying
Shrimp	National Bureau of Standards	U. S. Air Force	Construction
Oysters	U. S. Army Corps of Engineers	National Fish and Wildlife Service	Hunting
Rubber	Conservation	National Bureau of Reclamation	Trapping
U. S. Navy	Patrol	Forest Service	Exploration
U. S. Coast Guard	Flood Relief	Coast and Geodetic Survey	U. S. Army
National Park Service	Rescue	Maritime Administration	U. S. Dept. of Interior



**QUIET** outboard motors made history three years ago when Johnson pioneered the idea with the world's first really quiet outboard, the famed, award-winning Sea-horse 5½.

Today, any outboard motor worth its salt must have certain basic features *built into* the motor to muffle excessive noise and vibration. *All* of today's Sea-horses are built that way. All Sea-horses from the 5½ to the big 35's, feature Suspension Drive with its ingenious rubber cushion mounting system, air intake silencer, sound-sealed hood, underwater exhaust, exhaust relief silencer and quieter spiral-bevel gears. And even the quiet little 3 features an intake silencer, underwater exhaust, partial exhaust relief silencer and quieter gears.

As always, Johnson leads the way . . . and quieter outboard motors have now become the standard. When smoother-running, easier-running, quieter-running outboard motors are built, they'll carry the name *Johnson!*



## Man, Oh Man! sweetest-starting JOHNSONS ever!

All 1957 Sea-horses are equipped for easier manual starting than has ever been possible in the outboard industry before!

An *automatic* compression relief system makes the mighty Sea-horse 35's as easy to start as motors *half* their size! Special chambers have been provided in the cylinder head to relieve the force needed to put the engine over compression. Relief valves are operated *automatically* by a linkage to the starting drum . . . *automatically* timed with the starting handle at the time it is pulled!

And, of course, you don't have to fret about "jump and jerk" action when you start the Sea-horse 18, 10, 7½, 5½ or 3. They are equipped with a large-diameter oval pulley which provides a smooth, easy pull.

It's *balanced* manual starting . . . a smooth action that makes starting easier . . . and quicker, too! Again, these features were requested by Sea-horse owners who have learned to appreciate Johnson know-how and engineering skill.



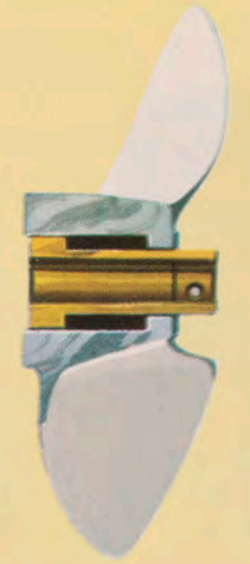
Dashboard switch-plates for 1957 are supplied in two models . . . one for single motor operation and one for twin-motor use. They are handsomely designed, and if you use the Power-Master generator, its ammeter fits right in the center of the switch unit. Each plate includes a "start" button for each motor, and a "choke" button for each. A simple touch of the finger is all you need to put your new Sea-horse into action!

For 1957, hooking up your electrical connection is a simple matter of plugging the cable directly into an outside fitting on the motor. As simple as the electrical connections in your home! Terminals are molded into place and are entirely waterproof for trouble-free operation in fresh or salt water. On the 35, the new Quick-Plug system contains all the wiring necessary for your generator. Quick-Plug for the Sea-horse 18 fits right into the front of the motor.



### SAFETY-MASTER SLIP-CLUTCH

Now *all* Johnson Sea-horses are equipped with slip-clutch propeller protection. Shear-pin worries are ended forever! In the big Sea-horses the Safety-Master is a redesigned rubber propeller hub which allows the prop to slip when it hits an obstruction. Further protection is given by an edged device on all propellers which prevents entangled lines from damaging propeller shaft and gear case. It slices lines which normally would wind around the shaft. Sea-horse owners asked for this improvement, and it's here for 1957, on the entire Johnson line!



### Save Fuel—Save Dollars AUTOMATIC FUEL SAVER

If there's a wee bit of Scotch in you (and who doesn't have *that?*) you'll really learn to love Johnson's Automatic Fuel Saver. All the big Sea-horses have it. It's *real*. It's *authentic*, not "claimed," fuel economy. It will add miles to your cruising range because it *saves* you one gallon or more out of every five! You'll get 20 per cent *or more* savings! It's a simple matter of pulling your throttle back a little, and you're automatically in the dollar-saving cruising range!

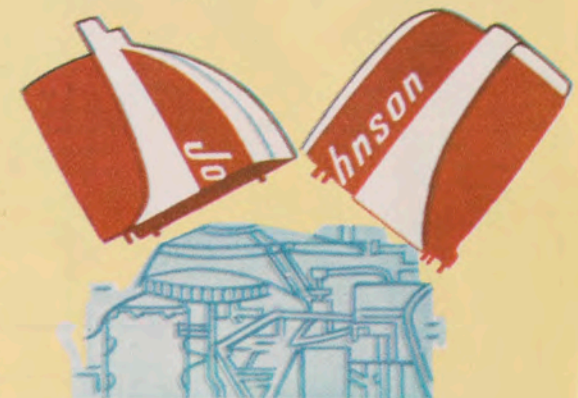
This is *another* feature requested by Sea-horse owners . . . another example of Johnson's progress through engineered DEPENDability.



Ship-Master Remote Control lets you drive your boat just like you drive your car! Available for single or twin motors—precision-engineered for smooth, positive operation.

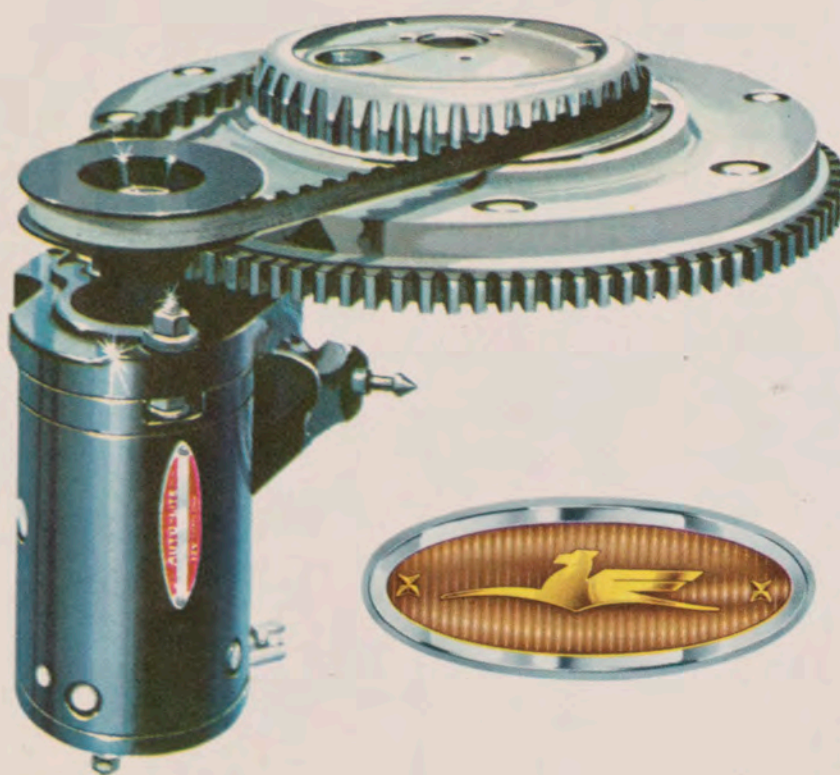
### UP-AND-OFF MOTOR HOOD

For convenience and for complete efficiency, no other outboard motor hood can compare with the hoods designed for the Johnson Sea-horse! Complete accessibility to spark plugs. No screws, no bolts, no special tools! Just release two small snaps, and your hood is up . . . and off in a matter of seconds! No fuss, no bother, and it works like a charm with twin motors, too!



### MILE-MASTER FUEL SYSTEM

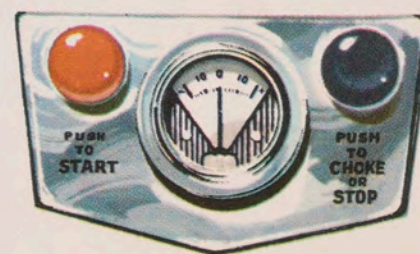
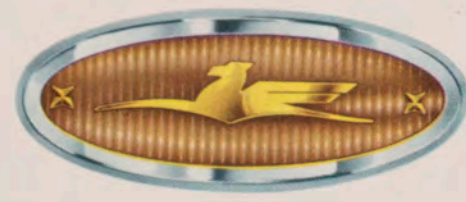
Sturdy Mile-Master Fuel System tanks are *part* of the motor when you buy the Johnson Sea-horse 5½, 7½, 10, 18, 35 and Golden Javelin. Ingenious self-sealing connectors plug directly into the motor. No worries about leaks or spill-overs. Fuel flow is automatically controlled, and fuel is filtered through a screen before it reaches your motor. An accurate fuel gauge is mounted on top of the tank in plain sight. All Golden Javelins, 35's, 18's and 10's are equipped with six-gallon tanks, and all 7½'s and 5½'s have the 4¼-gallon tank. Easy to carry, easy to stow, and completely free of trouble or worry!



### POWER-MASTER GENERATOR

A sensational new quick-charging 12-volt generator is now optional on the Electric Starting Sea-horse 35 and Golden Javelin for 1957. The Power-Master has lightning-quick high output and will charge a low battery in a flash. It is rated continually at 10 amperes at 12 volts. Best of all, it is an automotive type unit, and is equipped with a current and voltage regulator to prevent overcharging. An efficient ammeter, which fits into the switch-plate on your dashboard, is supplied with the generator. Running lights, cabin lights, radio and other electrical equipment can be operated from your battery without a worry in the world. The Power-Master takes 'em all in stride, the voltage regulator takes care of your battery, and the ammeter gives you an instant and correct reading. In effect, the new Power-Master adds more convenience to outboating . . . makes handling your boat even more like driving your car than ever before.

Convenient positive and negative connectors on the electrical junction-box make it possible for you to hook up wiring for your lights and other electrical installations instantly.



# Features OF THE NEW SEA-HORSES FOR 1957



## A Man Who *Knows* The JOHNSON Sea-Horse Dealer!

Johnson Motors has always been justifiably proud of its nationwide dealer organization. Each dealer is "Mr. Outboard Motor" in his community. In many cases, his place of business is a complete marine store, and he is capable of giving you expert, complete advice on the purchase and use of your boating equipment. Try him. Call on him for demonstrations. Look at his Service Department. You'll soon see that he has invested many dollars (and usually many years) in the business of serving your boating needs. There are 3,500 of these stores throughout the nation, along with 800 Master Service Stations . . . ready to serve you.



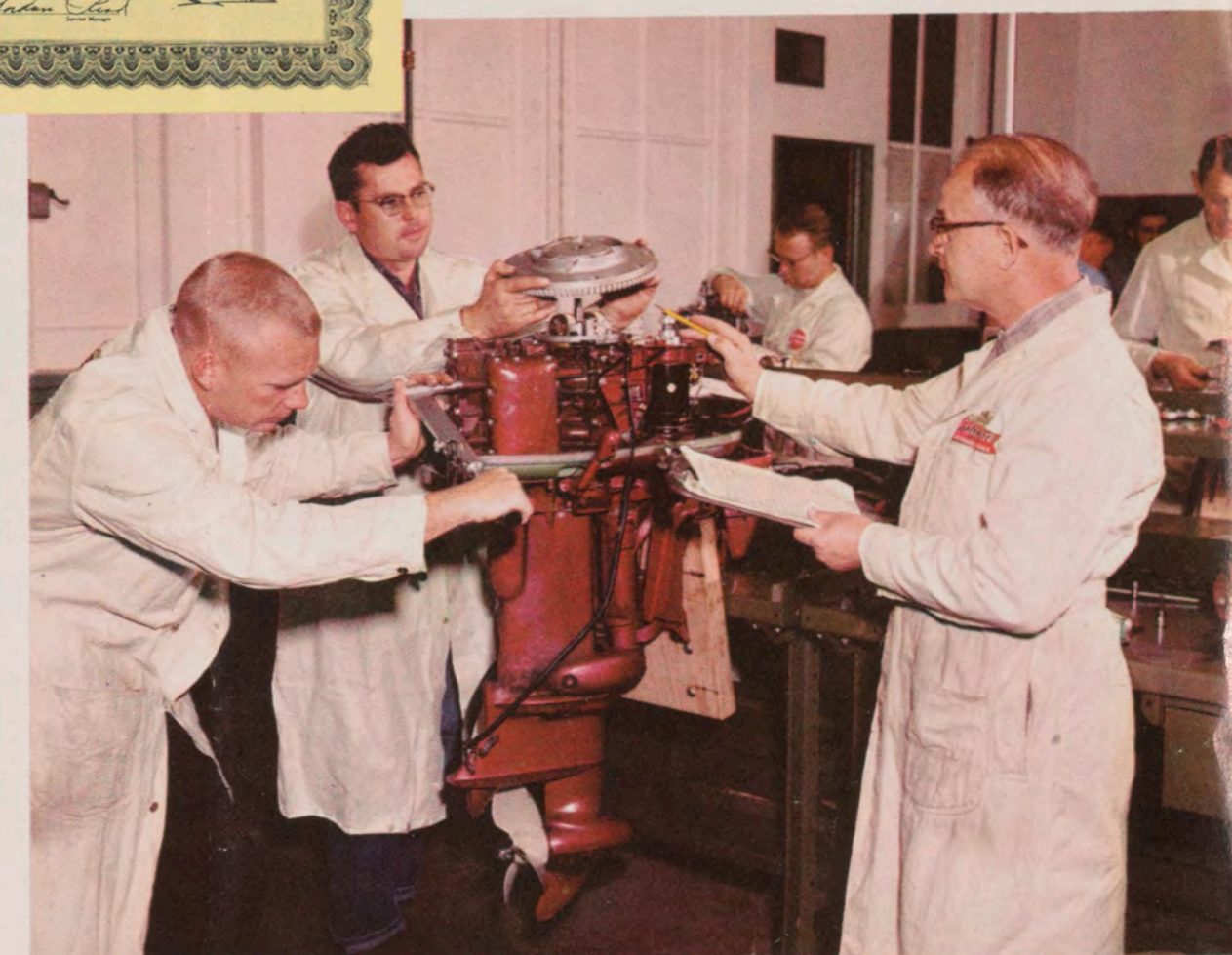
## TRAINED SERVICEMEN

At Your

*Command*

The goal of the Service School at the Johnson Motors factory in Waukegan, Illinois, is to turn out the best outboard motor mechanics in the world. During the past nine years, this school has given diplomas to 1,122 servicemen. They are an invaluable asset to the dealer in giving you complete service. We're proud of them, and you should know them better. Their knowledge is a special one, and their tools, their techniques are especially developed for the maintenance of outboards.

This is "nuts and bolts" talk . . . but we think that every Johnson Sea-horse owner should know what stands *behind* his motor . . . a factory that *believes* in service . . . the dealer who invests his time and dollars in it . . . and the serviceman who keeps our motors happy!



	<b>GOLDEN JAVELIN</b> ELECTRIC STARTING <b>35</b> H.P. at 4500 R.P.M.	<b>SEA-HORSE</b> ELECTRIC STARTING <b>35</b> H.P. at 4500 R.P.M.	<b>SEA-HORSE</b> MANUAL STARTING <b>35</b> H.P. at 4500 R.P.M.	<b>SEA-HORSE</b> ELECTRIC STARTING <b>18</b> H.P. at 4500 R.P.M.	<b>SEA-HORSE</b> MANUAL STARTING <b>18</b> H.P. at 4500 R.P.M.	<b>SEA-HORSE</b> <b>10</b> H.P. at 4000 R.P.M.	<b>SEA-HORSE</b> <b>7½</b> H.P. at 4000 R.P.M.	<b>SEA-HORSE</b> <b>5½</b> H.P. at 4000 R.P.M.	<b>SEA-HORSE</b> <b>3</b> H.P. at 4000 R.P.M.
<b>BRAKE HORSEPOWER</b> CERTIFIED BY O.B.C.									
<b>MOTOR REVOLUTIONS</b> PER MINUTE RANGE	4000-5000	4000-5000	4000-5000	4000-5000	4000-5000	4000-5000	3500-4500	3500-4500	3500-4500
<b>PISTON DISPLACEMENT</b>	40.5 cu. in.	40.5 cu. in.	40.5 cu. in.	22 cu. in.	22 cu. in.	16.6 cu. in.	12.4 cu. in.	8.84 cu. in.	5.28 cu. in.
<b>BORE AND STROKE</b>	Bore 3¼" — Stroke 2¾"	Bore 3¼" — Stroke 2¾"	Bore 3¼" — Stroke 2¾"	Bore 2½" — Stroke 2¼"	Bore 2½" — Stroke 2¼"	Bore 2¾" — Stroke 1¾"	Bore 2½" — Stroke 1¾"	Bore 1½" — Stroke 1½"	Bore 1½" — Stroke 1¾"
<b>GEAR RATIO</b>	.572	.572	.572	.572	.572	.578	.578	.578	.609
<b>SPEED RANGE</b>	Slow trolling to over 33 M.P.H.	Slow trolling to over 33 M.P.H.	Slow trolling to over 33 M.P.H.	Slow trolling to over 27 M.P.H.	Slow trolling to over 27 M.P.H.	Slow trolling to over 20 M.P.H.	Slow trolling to over 17 M.P.H.	Slow trolling to over 12 M.P.H.	Slow trolling to over 8½ M.P.H.
<b>FUEL CAPACITY AND AVERAGE</b> FULL SPEED RUNNING TIME	6 gal. Mile-Master System 1½-1¾ hrs.	6 gal. Mile-Master System 1½-1¾ hrs.	6 gal. Mile-Master System 1½-1¾ hrs.	6 gal. Mile-Master System 2½-3 hrs.	6 gal. Mile-Master System 2½-3 hrs.	6 gal. Mile-Master System 4 hrs.	4¼ gal. Mile-Master System 3½-4 hrs.	4¼ gal. Mile-Master System 4 hrs.	4.88 pints 1½-1¾ hrs.
<b>DRIVE</b>	Gear Shift Forward-Neutral-Reverse	Gear Shift Forward-Neutral-Reverse	Gear Shift Forward-Neutral-Reverse	Gear Shift Forward-Neutral-Reverse	Gear Shift Forward-Neutral-Reverse	Gear Shift Forward-Neutral-Reverse	Gear Shift Forward-Neutral-Reverse	Gear Shift Forward-Neutral-Reverse	Full Pivot Reverse
<b>SPEED CONTROL</b>	Remote or Manual	Remote or Manual	Twist-Grip	Twist-Grip	Twist-Grip	Twist-Grip	Twist-Grip	Twist-Grip	Single Lever
<b>OPERATION</b>	Remote or Manual Control	Remote or Manual Control	Remote or Manual Control	Remote or Manual Control	Remote or Manual Control	Remote or Manual Control	Remote or Manual Control	Remote or Manual Control	Manual
<b>WEIGHT</b>	136 lbs. (Long model 138 lbs.) Fuel Tank 13 lbs.	134 lbs. (Long model 136 lbs.) Fuel Tank 13 lbs.	123 lbs. (Long Model 125 lbs.) Fuel Tank 13 lbs.	87 lbs. (Long model 88½ lbs.) Fuel Tank 13 lbs.	77 lbs. (Long model 78½ lbs.) Fuel Tank 13 lbs.	72½ lbs. (Long model 74 lbs.) Fuel Tank 13 lbs.	59 lbs. (Long model 60 lbs.) Fuel Tank 10 lbs.	56 lbs. (Long model 57 lbs.) Fuel Tank 10 lbs.	33¼ lbs. (Long Model 33¾ lbs.)
<b>STERN HEIGHT</b>	15" (Long model 20")	15" (Long model 20")	15" (Long model 20")	15" (Long model 20")	15" (Long model 20")	15" (Long model 20")	15" (Long model 20")	15" (Long model 20")	15" (Long model 20")
<b>PROPELLER</b>	3-blade rubber-floated aluminum, 10¾" dia., 13¼" pitch	3-blade rubber-floated aluminum, 10¾" dia., 13¼" pitch	3-blade rubber-floated aluminum, 10¾" dia., 13¼" pitch	3-blade rubber-floated aluminum, 9¼" dia., 11¼" pitch	3-blade rubber-floated aluminum, 9¼" dia., 11¼" pitch	3-blade rubber-floated aluminum, 9" dia., 8¼" pitch	2-blade aluminum brass bushed weedless, 8" dia., 7¼" pitch	2-blade aluminum brass bushed weedless, 8" dia., 7¼" pitch	2-blade aluminum brass bushed weedless, 6½" dia., 6¼" pitch
<b>SLIP CLUTCH</b>	Yes	Yes	Yes	Yes	Yes	Yes	Yes	Yes	Yes
<b>SILENCING METHODS</b>	Suspension Drive, Intake Silencer, Sound-Sealed Hood, Sealed-in Power Head, Underwater Exhaust, Exhaust Relief Silencer, Quiet Gears.	Suspension Drive, Intake Silencer, Sound-Sealed Hood, Sealed-in Power Head, Underwater Exhaust, Exhaust Relief Silencer, Quiet Gears.	Suspension Drive, Intake Silencer, Sound-Sealed Hood, Sealed-in Power Head, Underwater Exhaust, Exhaust Relief Silencer, Quiet Gears.	Suspension Drive, Intake Silencer, Sound-Sealed Hood, Sealed-in Power Head, Underwater Exhaust, Exhaust Relief Silencer, Quiet Gears.	Suspension Drive, Intake Silencer, Sound-Sealed Hood, Sealed-in Power Head, Underwater Exhaust, Exhaust Relief Silencer, Quiet Gears.	Suspension Drive, Intake Silencer, Sound-Sealed Hood, Sealed-in Power Head, Underwater Exhaust, Exhaust Relief Silencer, Quiet Gears.	Suspension Drive, Intake Silencer, Sound-Sealed Hood, Sealed-in Power Head, Underwater Exhaust, Exhaust Relief Silencer, Quiet Gears.	Suspension Drive, Intake Silencer, Sound-Sealed Hood, Sealed-in Power Head, Underwater Exhaust, Exhaust Relief Silencer, Quiet Gears.	Intake Silencer, Underwater Exhaust, Partial Exhaust Relief Silencer, Quiet Gears.



A MILLION SEA-HORSE OWNERS WILL TELL YOU

*Johnson Knows Best*

JOHNSON MOTORS • WAUKEGAN, ILLINOIS

A Division of Outboard Marine Corporation

in U.S.A.

Form 157