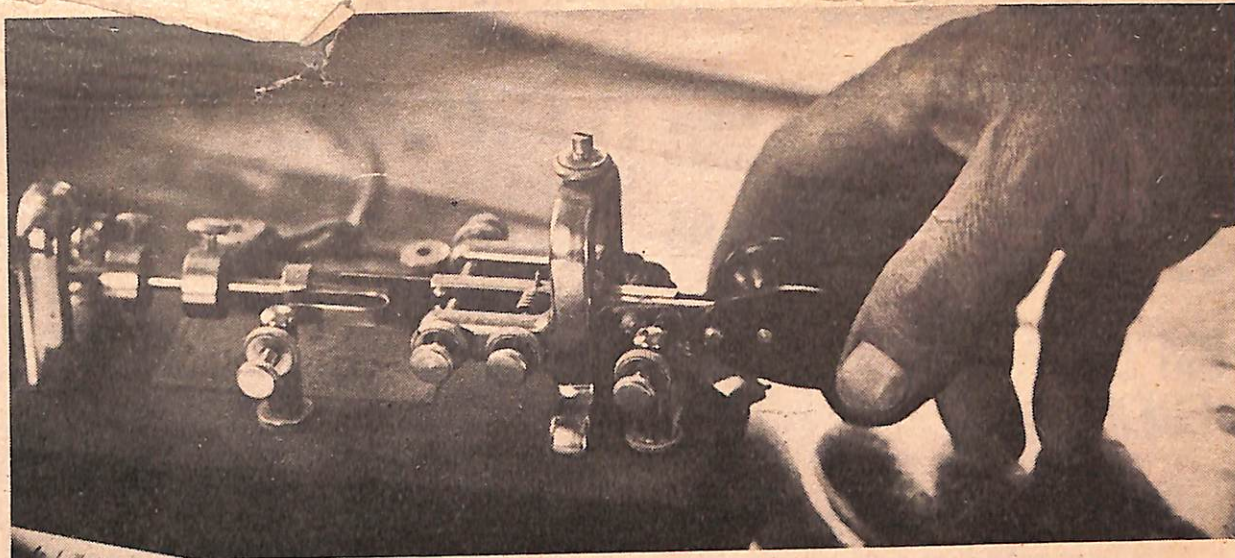


The telegraph, which once served as an important communication link to the pioneers living in the area, is mostly silent these days.



## Text and photos

by Tom Strongman

MAMIE DOUD EISENHOWER  
PUBLIC LIBRARY  
BROOMFIELD, COLORADO



Herbert Rutledge, station manager, has managed the station since 1963 and is employed by the Colorado and Southern Railroad.



Another message goes out to an engineer from a train passing by.



...another message goes out to an engineer from a train passing by.



## Yesterday still lives at Broomfield depot

At one time the 90-year-old Broomfield Railroad station hummed with activity, passengers arrived and departed for visits to relatives and old friends shared warm greetings as they arrived from the big cities of New York and Chicago.

Today the trains still arrive and leave on schedule but there are no warm "hellos" or painful "goodbyes" for the train station operates only to serve the needs of the freights.

Herbert L. Rutledge, station manager since 1963, said six to 10 trains go through each day and it is his job to see that cars are left off and messages to engineers passed along.

The once-busy waiting room and former quarters of early station managers now is used by the Broomfield Jaycees for meetings.

The once busy waiting room of the Broomfield Station is silent.

**BUY,**

The last one

**COUPON**  
WORTH ONE  
1963