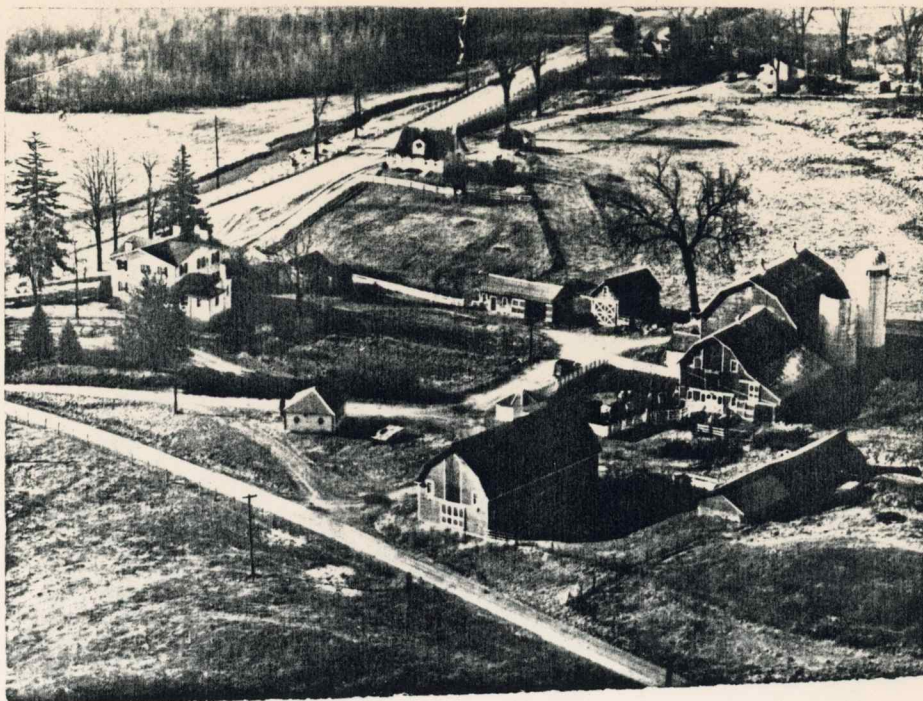


This house on the farm was built in 1854.



The Fraleigh Farm is located $1\frac{1}{2}$ miles east of Red Hook. It is a dairy farm consisting of 321 acres.



1982

About 20 100-year-old farms in the county:

State to honor Century Farm

A Dutchess County farm which has been in the same family for over 100 years will be honored by the New York State Agricultural Society in January.

The agricultural society honors four century farms each year. The award rotates around the counties, so a Dutchess County farm is honored every 10 or 11 years.

The last farm to be honored was the Ken-Ray Farm in LaGrange, owned by the Vail family.

Dutchess County is ahead of schedule this year, because the designated county of Westchester couldn't find a farm which hadn't been honored.

About 20 eligible

Dave Tetor, agricultural agent for the Dutchess County Cooperative Extension, and Clifford Buck, historical expert, have found about 20 farms

which are eligible. All century farms will receive a certificate.

Tetor asks any farm which they have overlooked to contact him so it can be included in the judging.

The farms they have found are:

Irv Fraleigh of Red Hook, Tom Hahn of Salt Point, John Hoffmann of Pine Plains, Tom Moore of North East, George Culver of North East, Anna Germond of Clinton, Fred Davis of Millbrook, Harry Bull of Amenia, Mary Bird of Stanford, Roswell Kinney of Stanford;

Also Webster Coon of Red Hook, Sam Hall of Dover, Alfred Hasbrouck of Salt Point, Ted Traver of Pleasant Valley, Charles Tucker of Stormville, Elton Bailey Jr. of Stormville, John W. Aldrich of Red Hook, Oakleigh Thorne

of Millbrook, Cornell Farm of LaGrange, Wright Tabor of Dover, and Brud Dickson of Verbank.

Five already honored

The five Dutchess County Farms which have already been honored are Ray and the late Ken Vail of LaGrange in 1973, William Henry Taber farm in Pawling in 1952, Fowler Farm in Millbrook in 1941, the Reed Farm in Amenia in 1938, and the Sleight Farm in LaGrange in 1937.

Factors the farms will be judged on include their contribution to the community, the amount of income derived from farming, and whether children plan to continue the farm.

The judges are : Tetor, Buck, Norm Benson, John Porter, Ray Vail, and Owen Boyd.