

NOTICE!

ECHOES

NEWSLETTER

FRIENDS of ELMENDORPH

SUMMER



2000

PRESIDENT'S MESSAGE

Dear Friends,

I am proud to take over as your president in what promises to be an important year for this great organization. It's been 25 years since a small group of people got together to create the Friends of Elmendorph. We now have more than 500 members. By the end of this year, with your help, we expect to complete the inn's restoration.

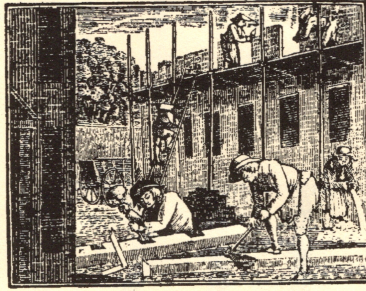
This spring I had the pleasure of working with some of our volunteers in the Elmendorph Etc. thrift shop, cleaning and arranging merchandise for the shop's May 20 opening. That day, which also was Red Hook's Apple Blossom Day, turned out to be cold and rainy, yet people did come to the shop. They also turned out for our fundraiser inside the Inn, where we served soup, salad and bread freshly baked in our beehive oven. This too, was a volunteer effort and we all had a great time working together.

The thrift shop is a major fundraiser for us. Over the years, it's been run by a small group of dedicated volunteers and now it's time for some of our other friends to step in and help out. Please think about volunteering. Activities include working in the shop when it is open, as well as receiving donations and washing, dusting, pricing and displaying donated items.

Linda Greenblatt has organized a number of student volunteers to work in the shop on Thursdays, Fridays and Saturdays in the summer. This will be a great help. But we also need adults to work with the students, especially on Saturdays.

The shop is always looking for donations such as furniture, lamps and kitchenware. No clothing, please. Please call 758-5887 or stop in the shop between 10 a.m. and 4 p.m. on Thursdays, Fridays or Saturdays if you are able to donate merchandise or your time.

Sincerely,
MARY KELLY
President



RESTORATION COMMITTEE

The fruits of the restoration process served in a new way on June 1st and 2nd when two groups of 7th grade Red Hook Middle School students gathered in the South Room to examine historic artifacts, discovered years ago during the restoration of the Inn's old and new kitchens. Under the direction of Bard College archaeologist Christopher Lindner, assisted by Susan Hinkle, the children began their day by studying prehistoric archaeology at the Grouse Bluff site on the Bard College campus.



Students identifying archaeological fragments under the direction of Professor Lindner.

After lunching in our shady backyard, the students learned about the archaeological digs carried on behind the Inn where the handicap ramp and bake oven are located and toured the first floor of the building before settling down at tables in the South Room to sort through bags of ceramic fragments, matching up like pieces and comparing them to historic examples in our collection. The students were accompanied by teachers Darren Fleischman and Suzanne Ellis, guidance counselor Ann O'Leary and several parents.

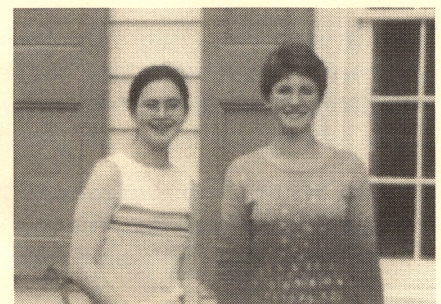
The program was funded by a grant arranged by Marie Sturgis, Assistant Superintendent for Curriculum.

Barbara Bielenberg

KUDOS

The board wishes to applaud the community volunteerism —
and old fashioned hard work —
of nine Red Hook High School students.

On April 17, Melissa Brown, Kerri Campbell Evans, Anne Harris, Matt Keeling, Margot Kreider-Mueller, Rachel O'Neill, Peter Stewart, Serena Winchell, and Zac Rider-Wyner, along with district teacher (and Friends director) Linda Greenblatt, spent more than three hours helping to prepare the Inn for its spring and summer community events.



Serena Winchell and Margot Kreider-Mueller have recently signed about 30 student volunteers (Grades 8-12) for the summer at the Etc. Shop. The group will continue as the Elmendorph Historical Club.

The students dusted, washed windows, vacuumed and wet mopped floors, cleaned the kitchen cabinets and refrigerator, swept the fireplaces and removed, washed and stored the Plexiglas storm windows.

EGBERT BENSON HISTORICAL SOCIETY OF RED HOOK

Barbara Bielenberg, President

Like the Friends of Elmendorph, the Historical Society was born of the enthusiasm for local history generated by the United States' Bicentennial activities. Members of the Red Hook Bicentennial Committee began collecting historic artifacts and maps of the area, while other members struggled to save the Town's most historic building from destruction. In order to continue to collect and preserve documents and artifacts of historic interest and promote public knowledge of the history of the Town, the Historical Society applied for a charter from the Education Department of the State of New York. When the charter was granted in 1978, the incorporators were John Losee, Barbara W. Bielenberg, Richard Coons, Leocadia Kittner, Ardith St. John, Marion Champlin, Harriet Johnson, Georgia Coons and Maynard J. Ham.

Over the years, as the Elmendorph Inn was gradually restored, the Historical Society has provided educational programs for the community in the gracious South Room. In 1998, the Rosemary Coons Historical Archive Center on the second floor of the Inn was completed and we were finally able to bring together collections which had been stored throughout the Town, including six cases of files and photographs from Clara and John Losee, the papers of surveyor Frank Teal which filled eight large file drawers in our new cabinets, the collection of Tivoli historian Joan Navins and numerous other artifacts, books and papers, including our **most consulted resource**, a large flat box of maps gathered by the original Bicentennial Committee!

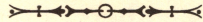


Barbara Bielenberg introduces Katherine Aldrich whose dramatic reading portrayed Christmas past in Red Hook.

The Archive Room is open every Tuesday, and by appointment, as volunteers continue to index our growing collections on our new computer. Members of the Society receive three newsletters of local history each year and postcards announcing the educational programs held 10 months of the year. This past winter, we painted and moved into one of the two small chambers on the second floor. In this workroom we store our supplies and material which has not yet been indexed and rehoused in archival files or boxes.

In appreciation of the facilities provided the Historical Society by the Friends of Elmendorph, the Society has begun making a monthly donation to help offset the operating costs of the Inn. We look forward to continuing the partnership begun so many years ago by the Bicentennial Committee.

SOUP, SALAD & BREAD at the RED HOOK APPLE BLOSSOM DAY



Inclement weather couldn't dampen the enthusiasm of those attending the Friends' Soup, Salad and Bread sale, held as part of the Red Hook Apple Blossom Festival on May 20. The Inn was transformed into a cozy refuge from the outside chill and rain, with beautifully decorated tables set up in the Tap Room and a fire lit in the Old Kitchen's fireplace.

The food sale brought in more than \$300. Our menu featured a variety of breads baked in the Inn's restored brick beehive oven, freshly churned butter, green salad and of course, all the delicious soups and desserts prepared by members of the Early American Cooking Group and many other volunteers.

We are grateful to everyone who contributed food and other items, and helped us with setup, during the sale and/or with cleanup. A big "thank you" goes out to: Bob & Barbara Bielenberg, Alma Bowman, Linda Common, Richard Coons, Betty Franklin, Linda Greenblatt, Bill Hammond, Alice Johns, Mary Kelly, Jessalyn Kilgour, Susan Kilgour, Jeff Levine, Joan Lewis, Ellen Phelan, Pete Riley, Peter Rose, Jim & Suzan Stapleford, Karen Streifeneder, and Eileen & Richard Zinnanti Sr. Also, special thanks to Adams Fairacre Farms of Kingston, the Red Hook IGA, the Rhinebeck Grand Union, and Spiegel Brothers of Kingston for their generous donations, and to the Red Hook Rotary for help promoting the event.

Leslie Coons Levine



Ellen Phelan prepares bread for the guests.

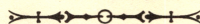
❧ THE FRIENDS OF ELMENDORPH ❧
BOARD of DIRECTORS
wishes to thank
MARY CIOFFI

Mary's devotion through the years has been unparalleled. As a charter member, she has worked hard for many years keeping track of our membership and all the donations to us. Mary has also been instrumental in organizing our annual dinners. Mary has chosen to hand off her duties, but we are sure she will not be far from the affairs of our organization. Mary we are grateful to you, thank you again.

Organization Spotlight



THE ELMENDORPH HANDSPINNERS CLUB, which meets at 7:00PM on the third Friday of each month, recently had a workshop to make Drop Spindles from CD's. The Drop Spindles are used to spin fleece into yarn. The club will use the Drop Spindles for educational purposes during this year's Dutchess County Fair.



FRIENDS of ELMENDORPH

SUMMER 2000

DONATIONS

Dr. and Mrs. Kenneth Appell
Apple Valley Realty
Susan Barich
in memory of Mr. & Mrs. Michael Barich
Carleen and Richard Baright
Lawrence and Elizabeth Bishop
Bob and Alma Bowman
Alfred Buff
Carrie Ellen Burger
John and Jane Burgoyne
John and Dolores Cayea
John Jay Chapman
in memory of Elizabeth Winthrop Chapman
Mr. and Mrs. Winston Coburn
Elizabeth and Basile Comeau
Mr. and Mrs. Oakleigh Cookingham
Mr. and Mrs. Vincent DeGruccio
in memory of Matilda Dolan
Tullen Downing
in memory of John D. Downing
Earl and Jean Duntz
Linda Fell
Jane Ferguson
Eleanor Friery
Drs. James and Barbara Geistfeld
Paula Golden
The Grand Duthcess
Linda and Jay Greenblatt
Paul and Joyce Grenon
Peter and Julie Hamiwka

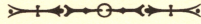
Bill and Diane Hammond
Peter and Teresa Hardin
in memory of Mary Hardin (IBM Matching Grant)
Patricia Hart
Nancy Hetzler
Mr. and Mrs. Louis Hubach
in honor of the Innkeeper, Bob Bielenberg's Birthday!
James and Dot Maher
Barbara and William Maple
Patricia Masia
in memory of Edward Francis Masia
Mrs. Betty Miller
Patricia A. Myers
Frank Rivers
Joyce Rockefeller
in memory of Doug Brown
Mildred and Bob Rockefeller
George and Marguerite Sevigny
Allard Sutton
Mr. and Mrs. Henry Thompson
John Tieder
Alice Timothy
Murray VanNess
Betty Mae VanParys
Dr. and Mrs. Edwin C. VanValey
Charles Wegman
Thomas West
in memory of Mr. & Mrs. Barovich
Henry and Marjorie Wheeler
The Wise Family Charitable Foundation

NEW MEMBER

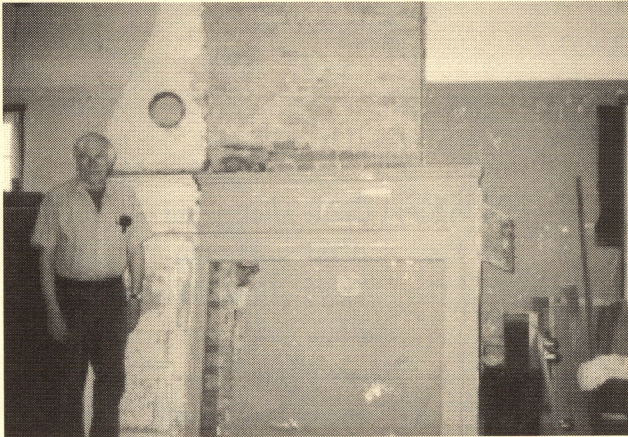
Tate Construction Company

NEW LIFE MEMBER

Patricia A. Myers



FRIENDS of ELMENDORPH



Herman Gorgens standing in front of the large mantle in the south room on the second floor of the Elmendorph inn.

*We need your support
for the final phase.*

The final phase of the restoration is at hand. The south room on the second floor is the last room in the Inn slated for restoration. We need your support to complete this room. We've got our estimates and are poised to begin. The room is a large beautiful naturally lit space. It will be used as a multi-purpose room for accommodating many types of community activities. Help us finish the restoration of the Elmendorph Inn with any contributions you can. Thank You for your support.

PLEASE NOTE: With respect for the rights and convenience of the IGA shopper, please observe the parking signs at any Elmendorph event. You are requested to park in the George Cole Auction parking lot, just north of the IGA.

INNKEEPER Bob Bielenberg

EDITOR/DESIGN/LAYOUT Stephen Lawson

NEWSLETTER

DIRECTOR Richard Zimanti, Sr.

DIRECTOR Peter Riley

DIRECTOR Stephen Lawson

DIRECTOR Bill Hammond

DIRECTOR Linda Greenblatt

TREASURER Madeline Klein

SECRETARY Leslie Coons Levine

VICE PRESIDENT Joe Kavaky

PRESIDENT Mary Kelly

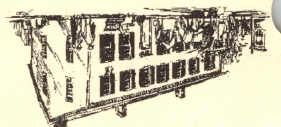
BOARD of DIRECTORS

CHANGE SERVICE REQUESTED

RED HOOK, NEW YORK 12571-0044

POST OFFICE BOX 1776

FRIENDS of ELMENDORPH, INC.



Non-Profit Org.
US Postage
PAID
Permit No. 36
Red Hook, NY 12571

*****3-DIGIT 124
Lloyd Jr & Jane Loop
940 GLASCO TPKE
SAUGERTIES NY 12477-3306