



FRANKLIN DELANO ROOSEVELT HIGH SCHOOL

DEDICATION

APRIL 24, 1966

SOUTH CROSS ROAD

HYDE PARK, NEW YORK

DEDICATION OF
FRANKLIN DELANO ROOSEVELT HIGH SCHOOL
HYDE PARK CENTRAL SCHOOLS
HYDE PARK, NEW YORK

APRIL 24, 1966

2:30 P. M.



*"We have faith in education as the foundation
of democratic government."*

FRANKLIN D. ROOSEVELT

Dedication of
FRANKLIN DELANO ROOSEVELT HIGH SCHOOL
HYDE PARK CENTRAL SCHOOLS
Hyde Park, New York

April 24, 1966
2:30 p.m.

WALTER G. CLIFFORD, *Superintendent of Schools*, Presiding

NATIONAL ANTHEM High School Band
Myles Lawlor, Director

PLEDGE OF ALLEGIANCE Miss Jacqueline Davis
President, Student Council

INVOCATION Rev. Gordon L. Kidd
Pastor, St. James Episcopal Church
Hyde Park

RECOGNITION OF GUESTS Walter G. Clifford

CHORAL SELECTIONS High School Chorus
William Cady, Director

"May Thy Holy Spirit" — Tchesnokoff

"This Is My Country" — Jacobs-Scott

GREETINGS Jack McEnroe
President, Board of Education

DEDICATORY ADDRESS Francis Keppel
Assistant Secretary of Education
U. S. Department of Health, Education & Welfare

DEDICATION OF BUST Miss Beatrice Fredriksen
FRANKLIN DELANO ROOSEVELT Faculty Adviser,
Class of 1964

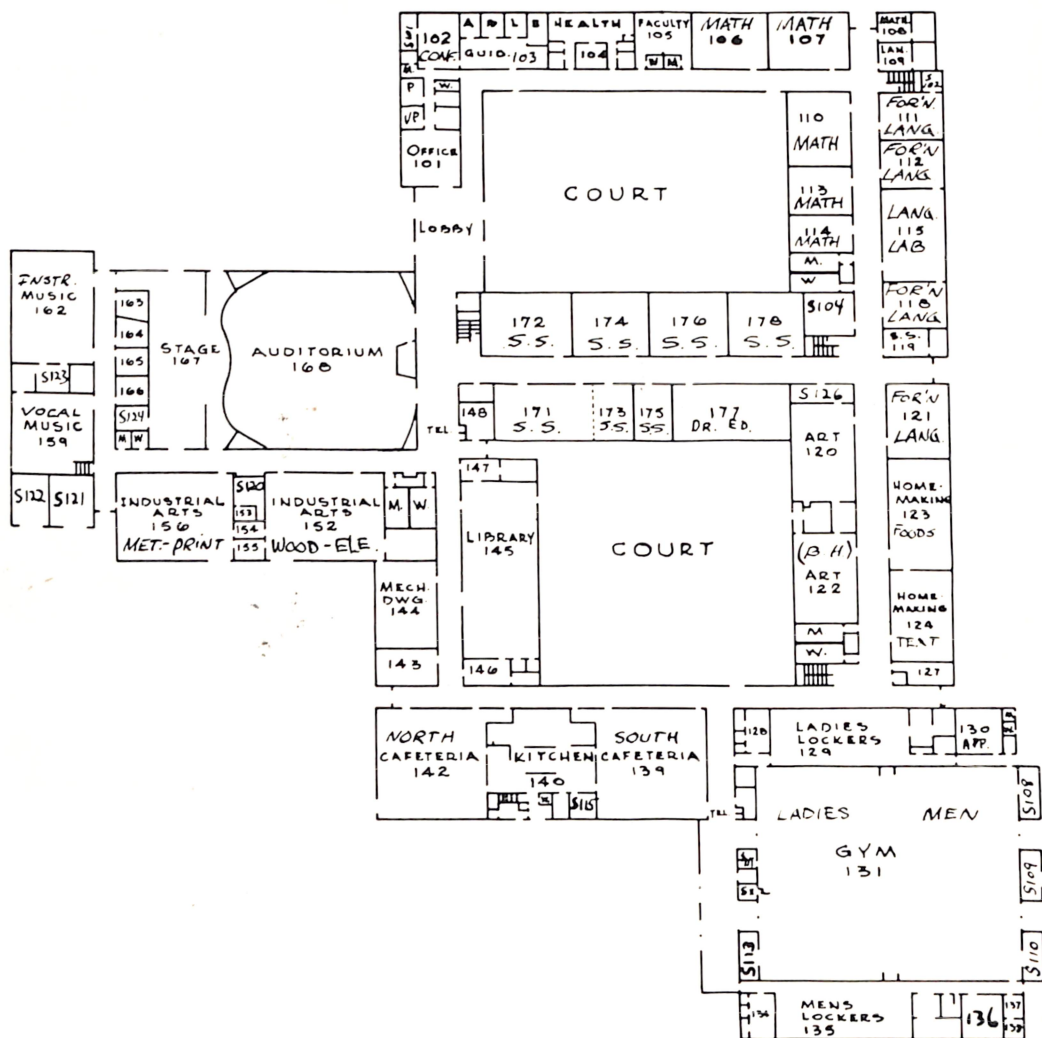
CLOSING REMARKS Gilbert B. Pearson
Principal

“ALMA MATER” High School Band

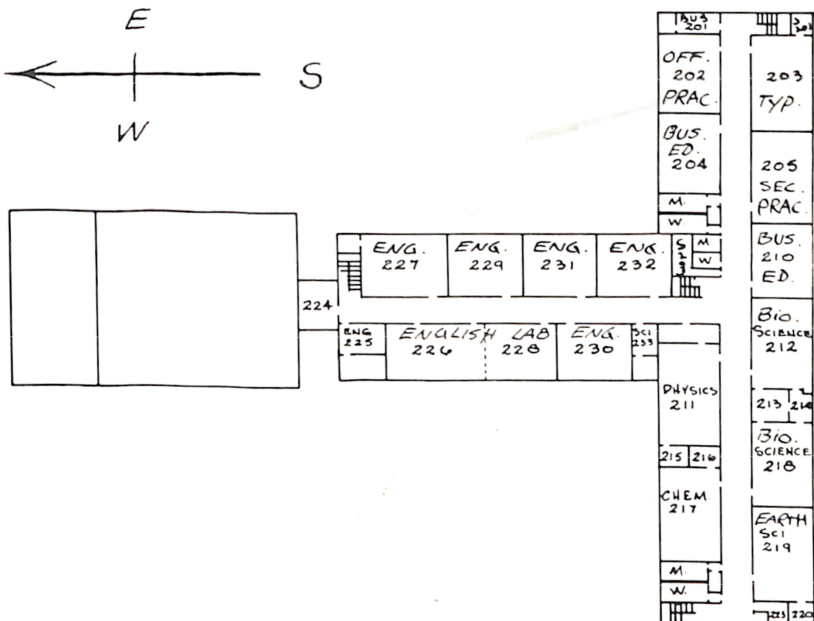
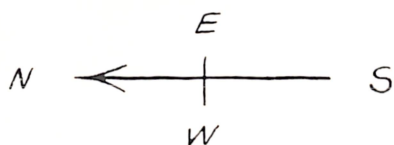
BENEDICTION . . . Very Rev. Monsignor Thomas V. McMahon
Pastor, Regina Coeli Church, Hyde Park

Following the formal dedication program our guests are cordially invited to tour the new high school building. Faculty members and student members of the National Honor Society and Student Council will act as guides.

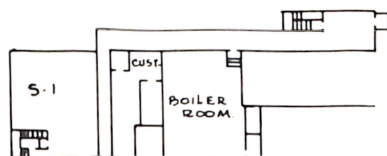
Refreshments will be served in the north cafeteria with the High School Parent Teacher Association assisting.



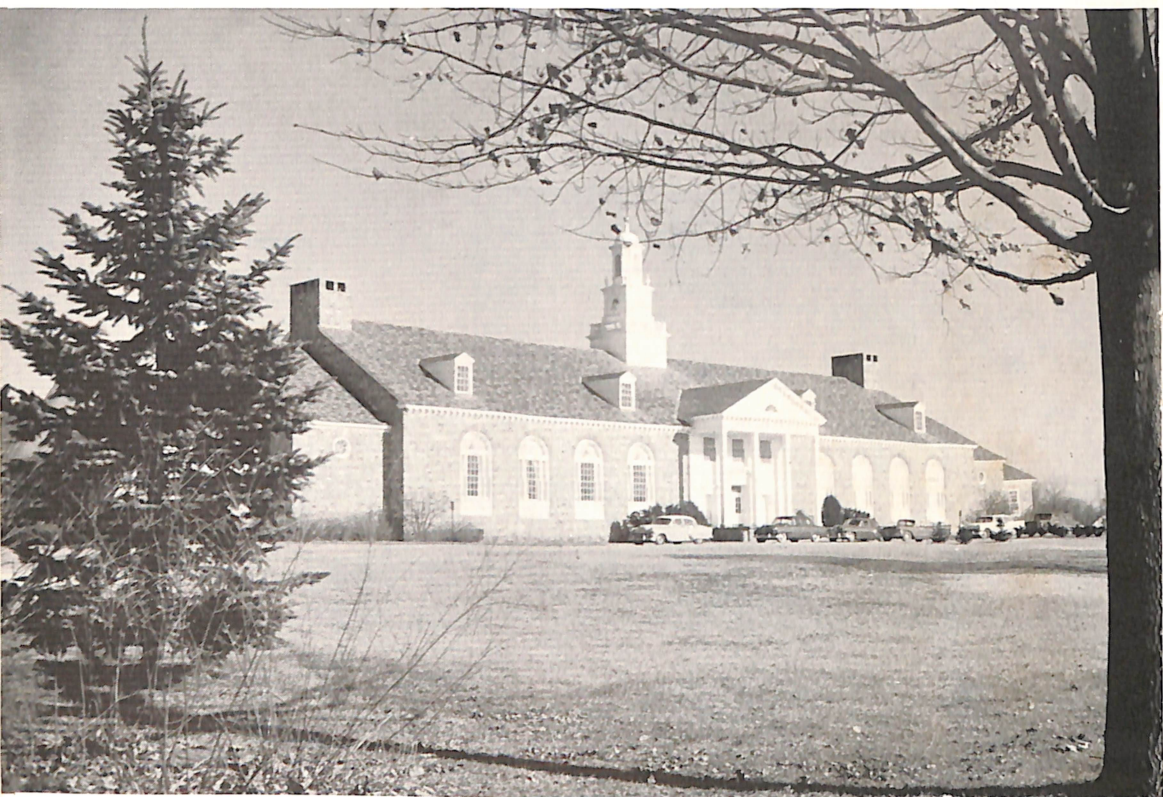
FIRST FLOOR



SECOND FLOOR



BASEMENT FLOOR



History

A history of education in Hyde Park shows genuine and consistent support of the schools.

Prior to the laying out of the first central school district on August 31, 1938, by Dr. Ernest E. Cole, then Acting Commissioner of Education of the State of New York, the area residents supported a great number of small independent school districts to serve children through grade eight. The high school pupils were sent to Poughkeepsie, Wappingers Falls, Arlington and Staatsburg. All of these pupils were responsible for their own transportation, some travelling more than 35 miles a day to get to school by several different means.

Following the formation of the new central school district with Edwin A. Juckett as Supervising Principal,

there was feverish activity for the ensuing two years involving the dissolution of many tiny school districts and the building of the Hyde Park Elementary School, the Violet Avenue School and the Franklin Delano Roosevelt High School. The high school was given its name over the protestation of Hyde Park's President Roosevelt and in spite of a federal regulation which forbade the naming of any federally financed buildings after living persons.

On November 11, 1938, the Board of Education executed a contract with Architect Robert R. Graham for the construction of the junior-senior high school. Newspaper accounts showed that there were many district residents who were of the belief that the proposed high school building would never be completely filled. It was constructed for grades seven through twelve to have a comfortable capacity of 600 students. On September 3, 1940, the new school opened with a total enrollment of 540 pupils. Signs of continued growth were illustrated by the senior class enrollment of 49 as compared to the grade seven enrollment of 119 pupils.

Student registrations in 1945 and in 1950 were 634 and 679. September 1955 found 840 students attending the building which was so over-taxed that curtailed sessions began that year. Some relief finally came with the construction of the Haviland Junior High School, which was occupied very early in the calendar year 1957.

Whereas the fall enrollment that year showed 415 in the grades 10-12, the school was very limited in the specialized facilities used in the advanced courses typically taken by upper-grade students, especially where laboratories were concerned.

In 1960 there were 512 students. District growth rates pointed out the need for additional upper-grade facilities. Committees of teachers and townspeople were becoming convinced that a new senior high school was

in order, studying the program and building needs to determine the best solution. The firm of Clark and Warren was employed to draw up plans for solution of the high school building problem.

The neighboring Staatsburg Union Free District had long been considering the advisability of joining with the Hyde Park Central School District. They, too, had housing problems brought about by the growth in student numbers. Mutual need was realized and on February 13, 1962, a vote took place to request that the two school districts be joined for their combined advantage.

A new school board was formed for the newly created district which started operation on July first of 1962, with Mr. Ray Barnum as president. The merger added about 130 students to the senior high school grades and Roosevelt opened its doors in 1962 to very nearly 700 students.

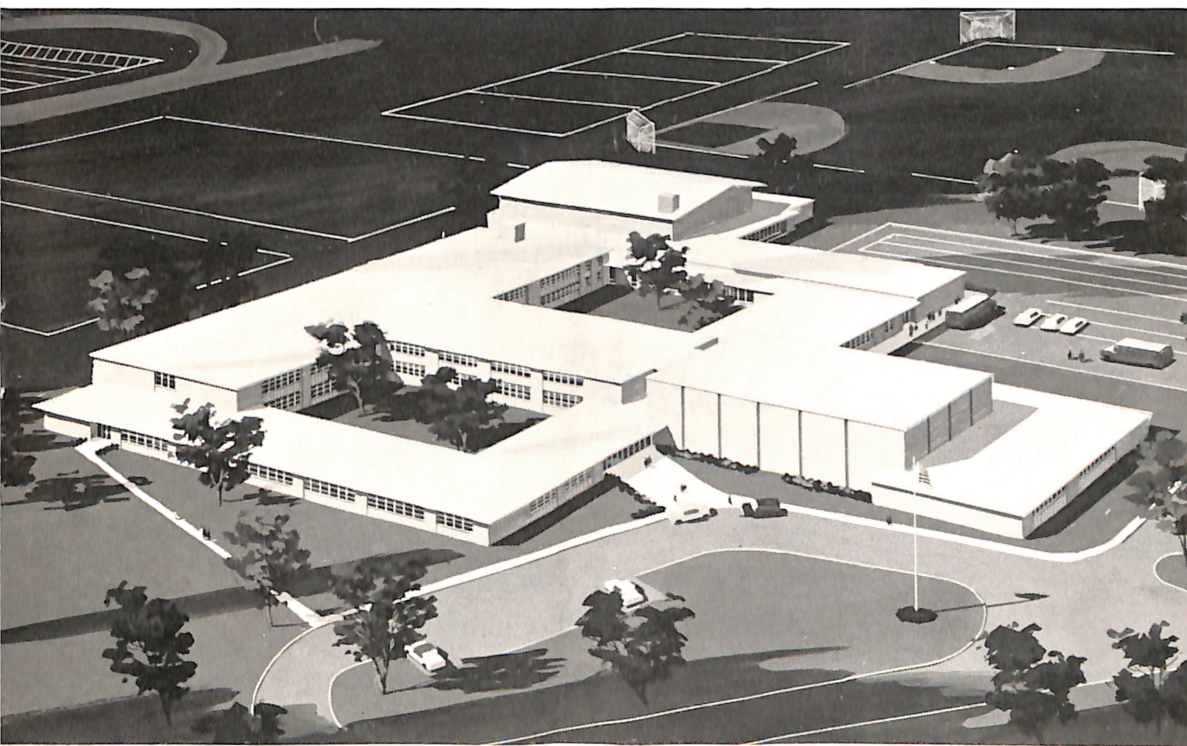
The voters of the new, enlarged Hyde Park School District #1 voted on February 7, 1963, to raise the money for a new senior high school for about 1100 students at a cost of \$2,991,400 on the approximately sixty-acre Anthony Haines site. The issue also included certain renovations and additions to the Haviland Junior High School building, which was to be joined to the existing Roosevelt building. After much consideration, it was decided that the high school would carry the same name, Franklin Delano Roosevelt.

As its gift to the school, the Class of 1964, in anticipation of the new building, commissioned Ben Karp to sculpture a bust of the late President Roosevelt which is being formally accepted today. Honoring others, the Board of Education has announced that the gymnasium is to serve as a memorial to Lawrence Lewis, and the athletic fields to Anthony Haines, and has specified that they should be known as such.

The general contractor experienced favorable weather and in March, 1965, had completed his major work. A brief cornerstone-laying ceremony was held on Sunday afternoon, June 13, 1965. Those assembled also had the opportunity to take guided tours of the new building.

Students made the transition to their new building on September 8, 1965. September enrollment figures showed 915 senior high school students, plus the accommodation of a section of junior high school students in the new building.

As we gather for this dedication of the new Franklin Delano Roosevelt High School, plans are already afoot to serve education by the construction of an elementary school at the very southern end of the new high school site.



*Members of the Board of Education
since
re-centralization, July 1, 1962*

Ray F. Barnum
Lynn H. Corson, Jr.
Arthur L. Fried
Mrs. Betty S. Hall
Warren E. Kershaw

Edward L. Leadbitter
Jack A. McEnroe
Vincent J. Mullen
Abbott W. Salter
William Young

*Superintendent of Schools
Walter G. Clifford*

*Architect
Clark & Warren, A. I. A.*

Contractors

R. Ciferri & Sons, Inc.
Mechanical Construction Corp.
Frank H. McEnaney, Inc.

General
Heating, Ventilating & Plumbing
Electrical

*Construction of Buildings
Joseph Quinn, Attorney
Hilford Willis, Clerk of the Works*

Dedication Committee

Mrs. Betty S. Hall, Chairman

Walter G. Clifford
Gilbert B. Pearson

Miss Beatrice Fredriksen
Miss Jacqueline Davis

F. D. ROOSEVELT HIGH SCHOOL

STATISTICS

Floor Area	129,388 sq. ft.
Construction Contracts	\$2,146,454.00
Cost per sq. ft.	16.58

FACILITIES

Auditorium to Seat 830 plus Fully Equipped Stage
Two Station Gymnasium to Seat 1,200 in Bleachers
Men's and Ladies' Shower and Locker Room Facilities
General Administrative Offices
Guidance Facilities with Four Counseling Rooms
Nurse's Station and Health Facilities
5 Math Classrooms
5 Language Classrooms
7 Social Studies Classrooms
1 Driver Education Classroom
2 Art Classrooms
2 Homemaking Classrooms
5 Business Education Classrooms
7 English Classrooms
2 Biology Classrooms
1 Earth Science Classroom
1 Physics Classroom
1 Chemistry Classroom
1 Library to Seat 100
2 Industrial Arts Classrooms
1 Choral Music Room
1 Instrumental Music Room
4 Music Practice Rooms
1 Mechanical Drawing Classroom
2 Cafeterias Seating 220 each
Double Serving Line Kitchen

SITE

Playfields
Baseball Diamond
Football Field
Cinder Track
6 Tennis Courts
Paved Roads and Parking for 325 Cars

ALMA MATER

Oh Roosevelt High we'll sing thy praise
And try to do our part
Your colors Green and Gold
We'll always cherish in our hearts.
In unison we've labored hard,
And had a lot of fun.
We'll give our thanks to Roosevelt High,
In all the years to come.

Chorus:

Hail to thee, our Alma Mater.
Dear, to thee we'll e'er be true.
We'll spread thy fame forever more
And praises sing to you.

Words by Wilma Clinton '42, Marion Knauss '42

NOTES

