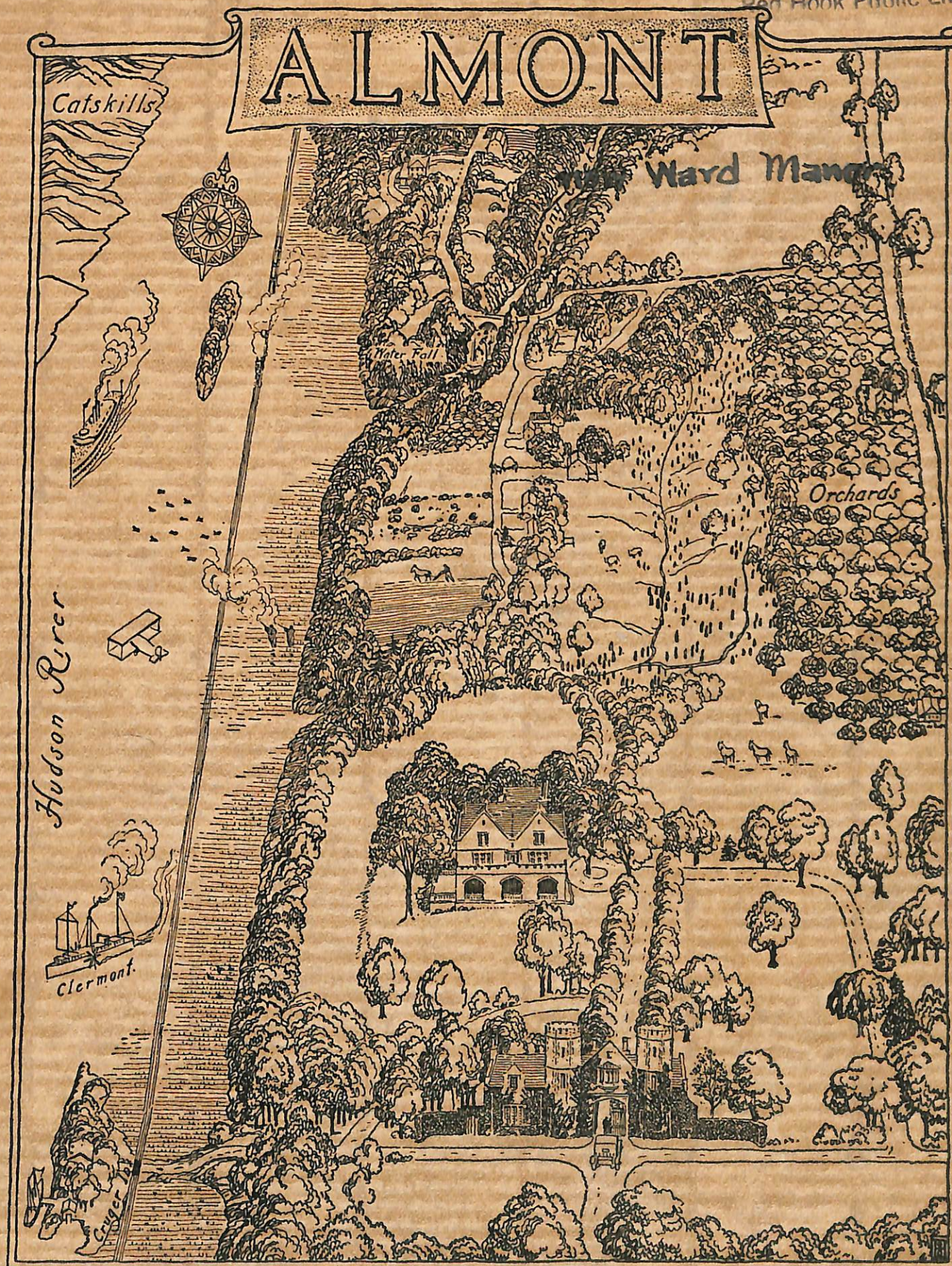
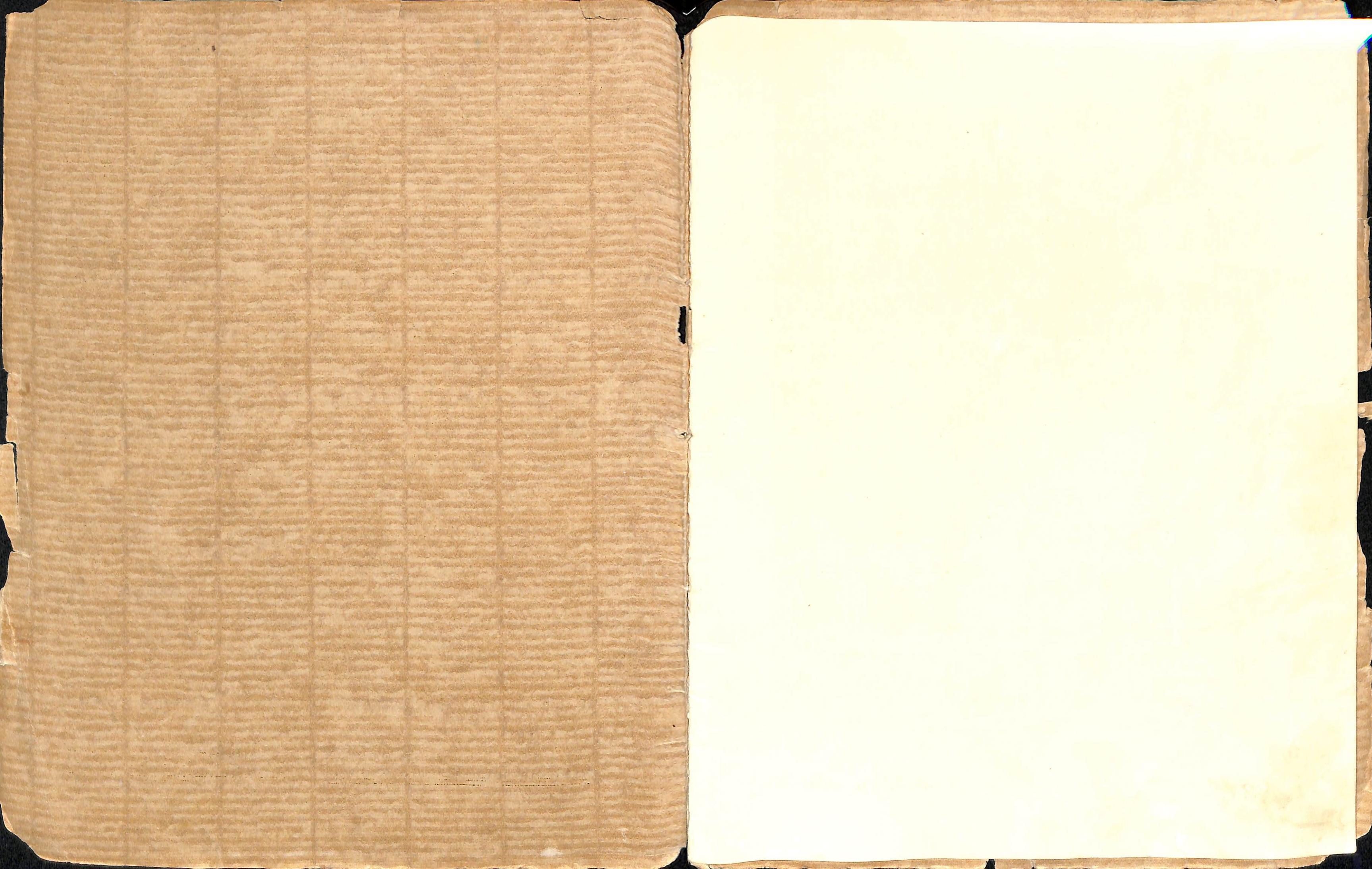


WARD MANOR

Red Hook Public Library



Red Hook Public Library





# ALMONT

THE HUDSON RIVER ESTATE OF  
LOUIS GORDON HAMERSLEY

*in the Town of*  
RED HOOK, DUTCHESS COUNTY  
NEW YORK



THREE MILES ABOVE BARRYTOWN  
TWENTY-FOUR MILES ABOVE POUGHKEEPSIE  
NINETY-SEVEN MILES FROM NEW YORK CITY

Containing

1000 acres, including 75-acre

CRUGER ISLAND

Over three miles of river shore-front with riparian rights  
Residence, gate lodge, garage, superintendent's house, model barn,  
farm buildings in variety, staff and tenant cottages, etc.

*For Sale*

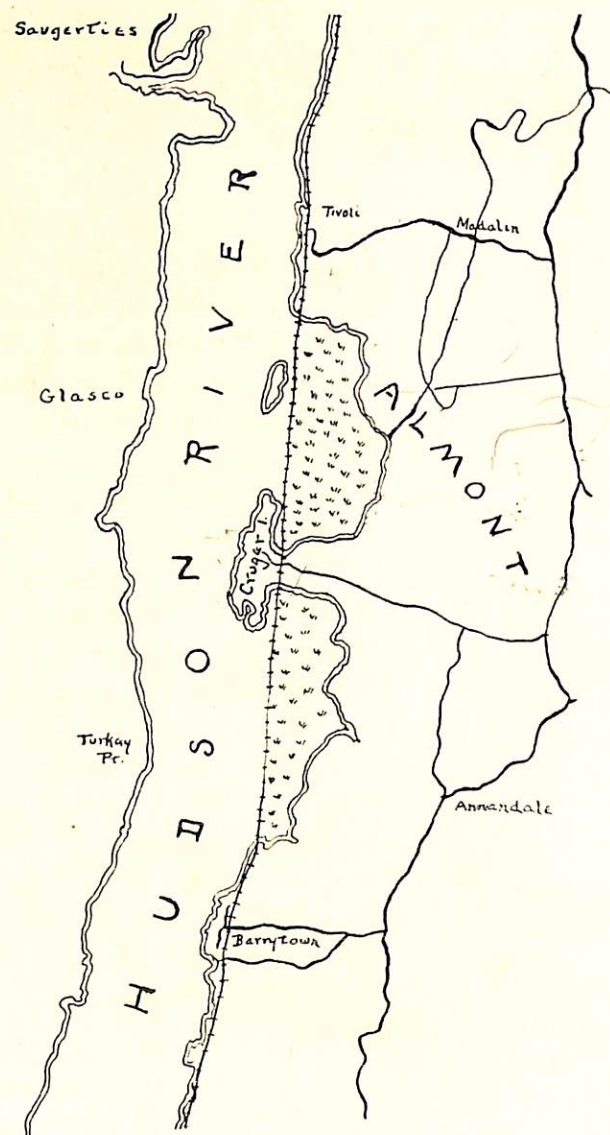
KENNETH IVES & CO.

17 EAST 42ND STREET  
NEW YORK



ALMONT is one of the line of notable Hudson River estates that extends throughout the length of beautiful Dutchess County. Just to the south, at Rhinecliff, is "Ferncliff," the ancestral property of Vincent Astor, and below that in order are the Huntington, Morton, Mills, Vanderbilt and Roosevelt estates, interspersed with numerous others only slightly less celebrated. Almost at the Hamersley entrance gate is Annandale, the seat of Saint Stephen's Episcopal College with its group of attractive buildings.

"ALMONT," in common with its locality in general, is rich in historic, legendary and romantic interest by virtue of its long association with family names well-known in Knickerbocker annals. "Al-



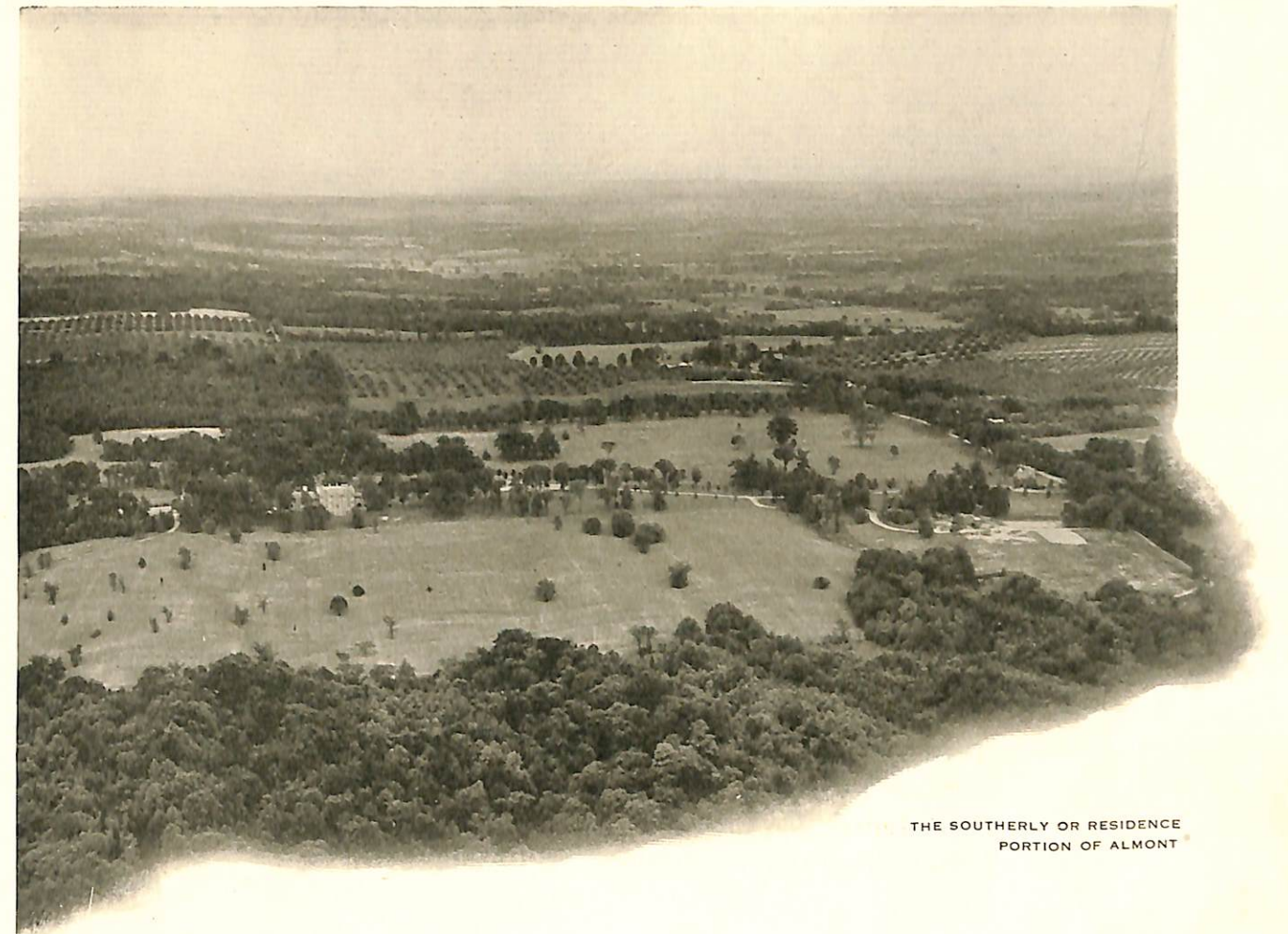
mont" proper, originally the southern portion of the estate assembled by its present owner a decade ago, to the whole of which the name has now been extended, formerly belonged to the Livingstons, and the adjacent Cruger Island, the most recent addition to the property, upon its purchase by Mr. Hamersley passed for the first time out of the hands of the Cruger family, who had made it their Summer home for generations. Their picturesque old mansion in the Swiss style still stands, though deserted. Of still greater historic moment is the fact that Robert Fulton and Robert R. Livingston are recorded as having built the first steamboat, the *Clermont*, in 1807 in the cove of the Hudson immediately to the north of the island and directly bordering the Hamersley acreage.

DRIVEWAY CONNECTING  
THE GATE LODGE AND  
ALMONT HOUSE



BEYOND its interesting associations, however, "Almont" possesses a strong appeal of its own through its extraordinary natural beauty. It consists of wide expanses of undulating meadows generously sprinkled with splendid trees and varied by stretches of beautiful woodlands, all sloping gently upward and eastward from the river's edge across one ridge to a higher one beyond, more than a mile inland. Several streams course through the estate to lose themselves in the Hudson, the largest forming an utterly fascinating rocky ravine and waterfall. Many acres are planted to fine, healthy, productive apple orchards, the property lying in the very heart of the famous apple belt of the Hudson valley. All of the more important buildings, including those erected by the present owner, stand along the crest of the first ridge, some three quarters of a mile back from the river, and command enchanting views not only of the Hudson but of the Catskill Mountains directly opposite.

ALMONT AND THE HUDSON WITH CRUGER ISLAND ON THE EXTREME LEFT



THE SOUTHERLY OR RESIDENCE PORTION OF ALMONT

TO THE north of Cruger Island the estate extends along the Hudson for nearly two miles. Barring several slight indentations formed by the abutments of adjoining properties, the other boundaries are for the most part public highways, though a substantial stream known as Stony Creek marks the easterly line of the northernmost section. It is this same stream which, farther down its course and within the estate, forms the very beautiful ravine and cataract illustrated in



ALMONT HOUSE



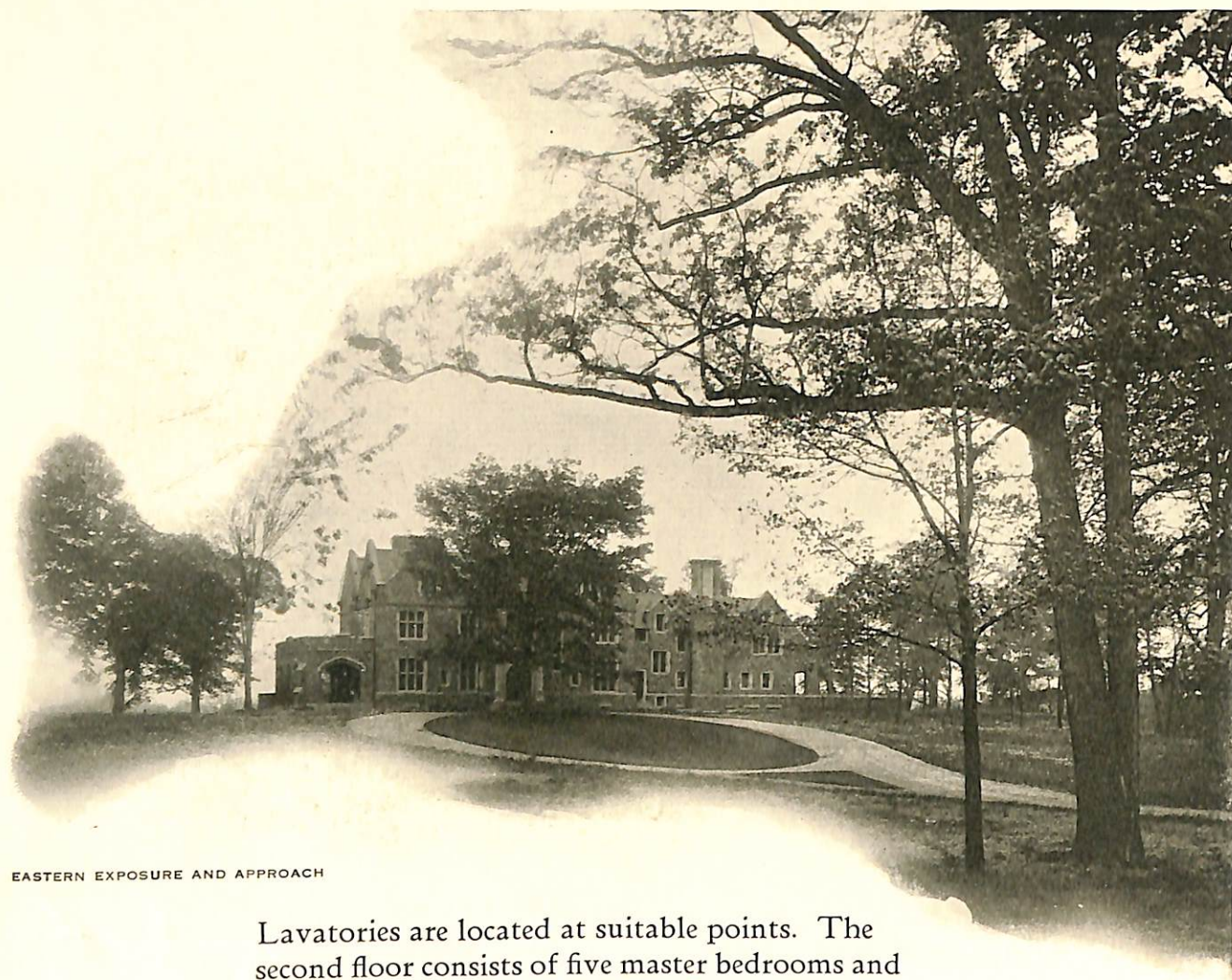
DETAIL OF THE EASTERN FRONT  
WITH MAIN ENTRANCE

this booklet. The cove associated with the fame of Fulton and Livingston and lying between the two extremities of the property has now been largely filled in by natural means and consists of an expanse of many acres of reedy marsh-land which in season affords the best kind of duck shooting. Other game in variety also frequents the wild and woody region along the waterfront, giving the place a still greater charm in the eyes of sportsmen. Outside the marshes and screened from Almont House by distant woods and a thick fringe of woodland, the tracks of the New York Central Railroad traverse the cove on a low trestle.



ALMONT HOUSE—WESTERN EXPOSURE

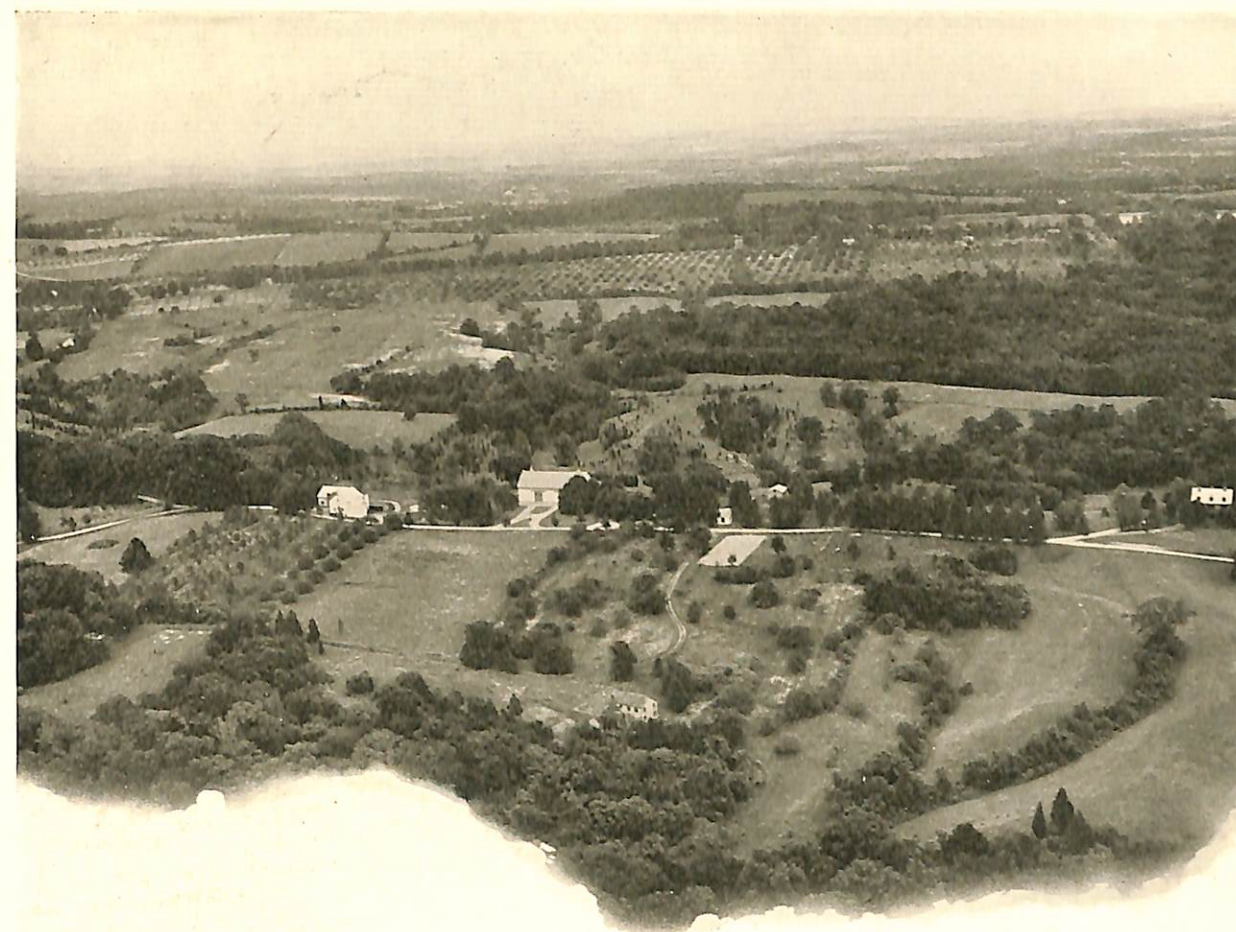
ALMONT HOUSE is a handsome gray stone residence with light sandstone trim, in the Tudor style, standing on a balustraded terrace in a setting of stately trees. It is splendidly built, elegantly appointed and virtually new. In addition it has the marked advantage of comfortable size, not too large for a family of moderate numbers. The main floor contains a large living room, dining room, library and den, all high-paneled in rich oak with finely decorative ceilings. A huge fireplace is a prominent and alluring feature of the living room. There is a large entrance hall, likewise equipped with a fireplace. A side pantry connects the dining room with the large, bright kitchen and service end of the house.



EASTERN EXPOSURE AND APPROACH

Lavatories are located at suitable points. The second floor consists of five master bedrooms and four tiled baths. On the third are two guest rooms connected by a tiled bath, and two bachelor rooms with a shower. The north wing contains ample service quarters, baths and storage space. The cellar is airy and dry. Beneath the tiled terrace a squash court is installed. The heating plant is of the best, and the water for the entire estate is supplied from a large underground reservoir into which it is pumped from a deep well.

THE house is approached over tree-lined drives and through an arched and turreted gate lodge, also in the Tudor style and of the same materials as the mansion.

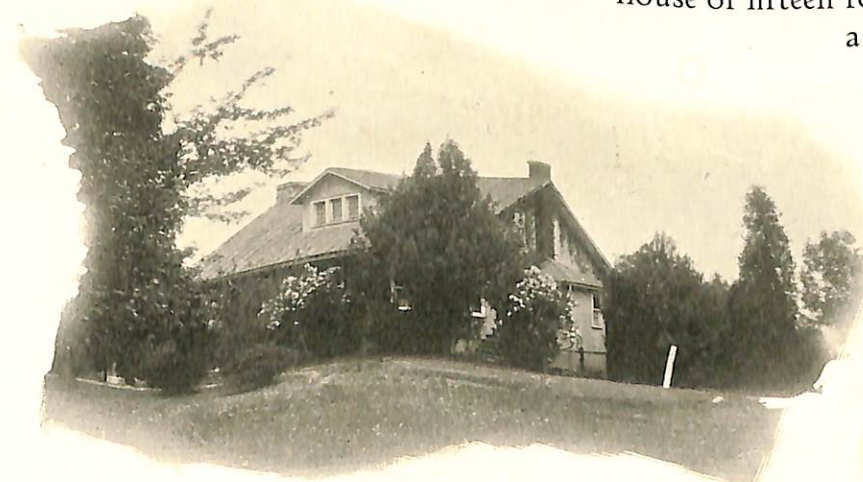


THE FARM PORTION.  
SUPERINTENDENT'S HOUSE ON EXTREME RIGHT

This is equipped for occupancy by a gate-keeper and contains in addition overflow guest quarters consisting of three sleeping rooms and two tiled baths.

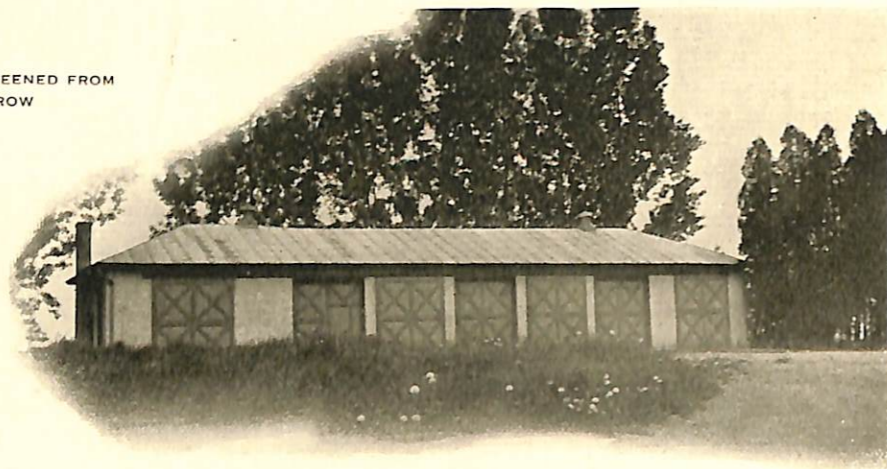
THE group of farm buildings stands fully a mile to the north of Almont House and is reached by way of a circuitous road leading through woodlands and across a valley.

It comprises an excellent superintendent's house of fifteen rooms and three baths; a large, up-to-date garage; splendid modern horse-and-cattle barn of most ap-



A CHARMING COTTAGE  
ON THE ESTATE

THE GARAGE SCREENED FROM  
THE ROAD BY A ROW  
OF POPLARS



proved type with numerous box stalls and accommodations for a good-sized herd; another well-equipped horse barn; and various minor utility buildings and staff cottages. The farm land is notably fertile and strikingly picturesque.

NEAR VIEW OF THE  
SUPERINTENDENT'S COTTAGE

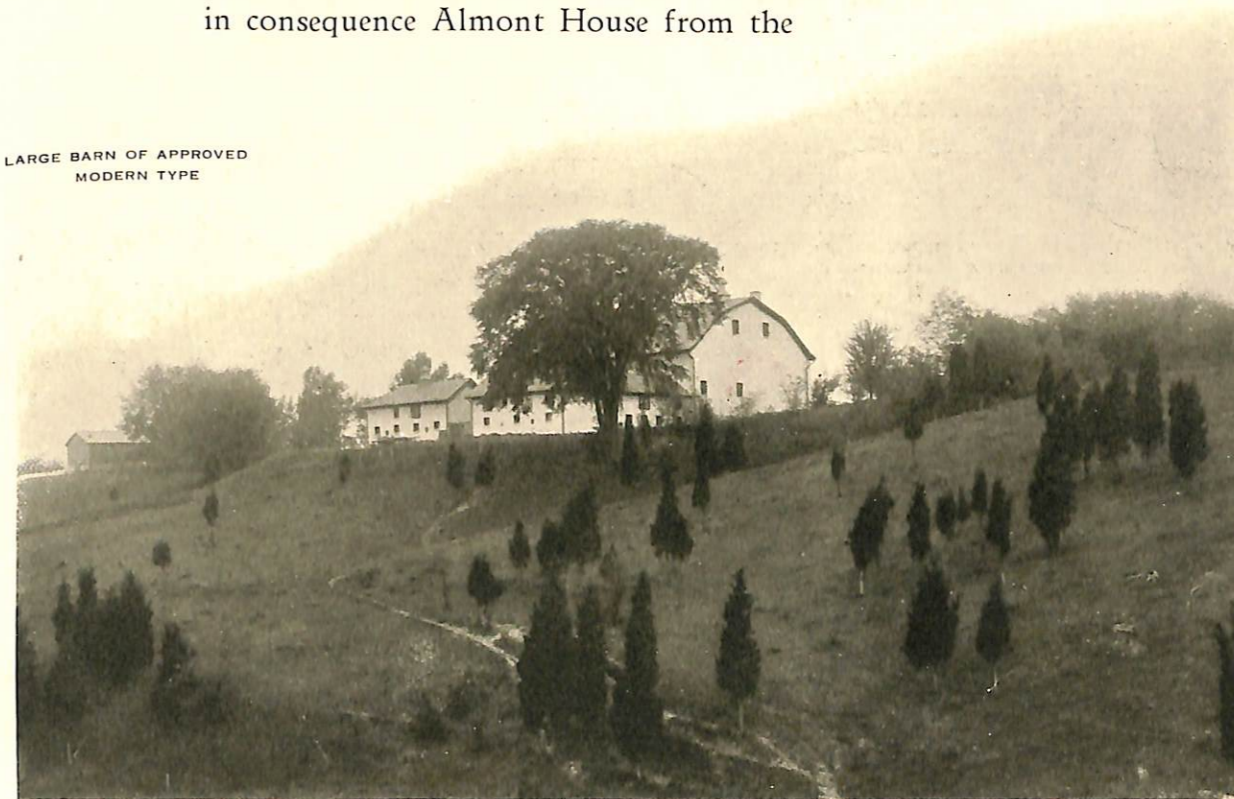


ONE OF THE BARNS



"ALMONT" is for sale solely because its owner finds himself drawn by associations elsewhere. Just out of college, and left without parents, Mr. Hamersley undertook the establishment of a country estate before his tastes were fully formed. He assembled the property and commenced the erection of a residence and various accessory buildings in 1914 or thereabouts. While the work was still in progress he went to war. Upon his return he became allied with the Long Island life and in consequence Almont House from the

LARGE BARN OF APPROVED  
MODERN TYPE





A BEND OF THE STREAM  
BELOW THE WATERFALL

day of its completion has stood unoccupied, except by caretakers. Until recently the farm was operated for the breeding of horses and Guernsey cattle, but this stock has now been dispersed.

THIS 1000-acre estate is readily divisible into four distinct parts, as follows: the southern end, including Almont House, the gate lodge, and approximately 300 acres; the farm proper, consisting of about 550 acres with the orchards; and two virtually separate sections of about 75 acres each at the upper and lower extremities, respectively, of the river frontage, the southerly being Cruger Island.

THE NORTHERN SECTION SHOWING THE OLD-FASHIONED HOUSE  
WHICH OCCUPIES A COMMANDING SITE



CRUGER ISLAND FROM THE AIR

THE upper of these smaller sections is divided between meadowland and woods and contains an old-fashioned thirteen-room house, easily susceptible of effective remodeling, and two barns.

CRUGER ISLAND, once detached, is now an island in name only, being connected with the mainland by an unbroken roadway. It is well-wooded and provides excellent facilities for a water approach to the main property as well as for boating, bathing and the like. A deep-water dock and an old boat-house are there, besides the venerable Cruger mansion, previously mentioned, and various reminders of its departed glory. Also, at the lower end, stands a picturesque



A GLIMPSE OF THE  
POTENTIAL LAKE-BED

and exotic ruin of somewhat mysterious origin but of fairly recent importation.

AMONG the original projects, ultimately abandoned, of Mr. Hamersley was the creation of an artificial lake in a stream-fed valley immediately to the east of the farm buildings. This could be done easily and at very moderate expense by the erection of a narrow dam at a strategic point between two steep slopes, and would provide a body of water a mile or more in extent. Its site is now dotted by a picturesque growth of sentinel cedars. Down into this valley from the uplands to the north runs a sectional toboggan slide three quarters of a mile in length.



SENTINEL CEDARS GUARD THE SITE  
OF THE PROPOSED LAKE