

PUBLIC AUCTION

Estate of the late
MRS. WILLIAM H. OSBORN
"Callendar House"
TIVOLI, NEW YORK

Held on Premises
SATURDAY & MONDAY, MAY 1 & 3, 1976
10 A.M. each day

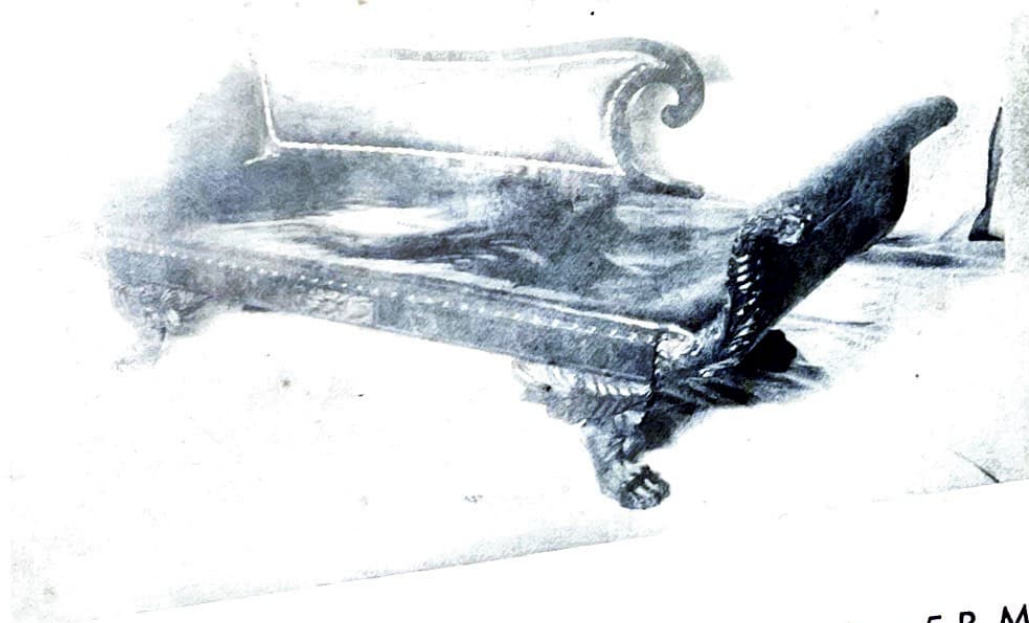


EXHIBIT: THURSDAY, APRIL 29, 1976 - 10 A.M. - 5 P.M.
Books & Bric-a-Brac will be Priced & Sold During the Exhibit
Telephone to be used during Exhibit & Sale: 914-759-2841

O. RUNDLE GILBERT
AUCTIONEER-APPRAISER



GARRISON, N.Y. 10524
TEL. 914-424-3657

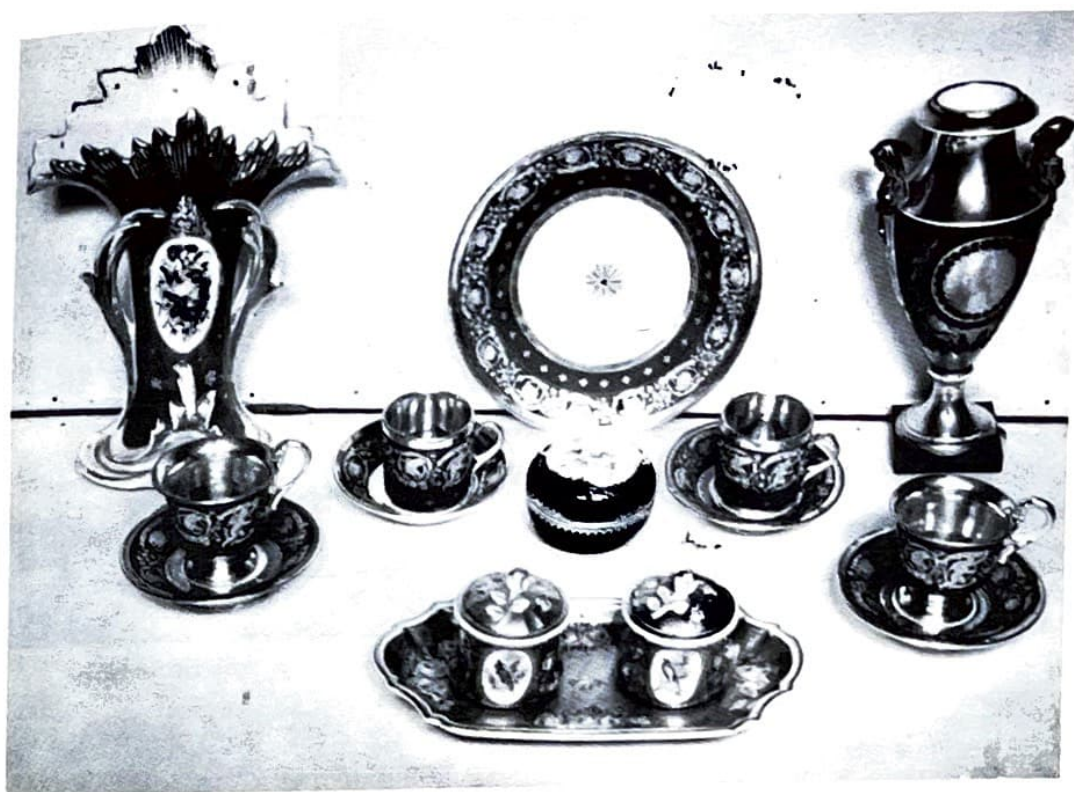
PUBLIC AUCTION

Estate of the late
MRS. WILLIAM H. OSBORN
"Callendar House"
TIVOLI, NEW YORK

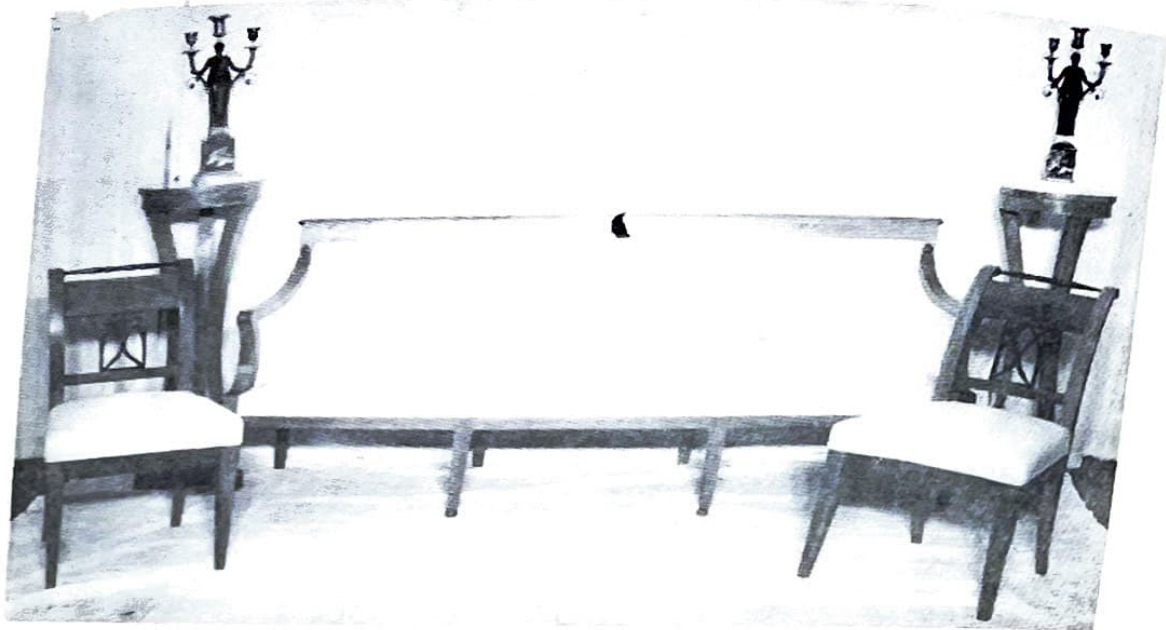
Held on Premises
SATURDAY & MONDAY, MAY 1 & 3, 1976
10 A.M. each day

"Callendar House" is part of the original grant to Chancellor Robert Livingston (1686-1715), First Chancellor of New York and First Lord of the Livingston Manor House "Clermont", Columbia County, New York. When the furnishings of one of the Livingston houses, "The Hill House", the home of Henry Walker Livingston, were sold, Mrs. Osborn bought several of the more important pieces including a pair of Duncan Phyfe sofas.

- 71 OVAL PLATTER 17 3/4" L.
- 72 OVAL PLATTER 19 3/4" L.
- 73 OVAL PLATTER 19 3/4" L.
- 74 LARGE WELL & TREE PLATTER 22" L.
- 75 OVAL PLATTER
Large chip on rim. 17 1/2" L.
- 76 PAIR OF GRAVY BOATS WITH PLATES
One handle has piece missing.
- 77 EIGHTEEN SOUP PLATES 9 1/4" D.
- 78 FOURTEEN DINNER PLATES
Some chips and cracks. 9 1/4" D.
- 79 FOURTEEN DINNER PLATES
Some chips and cracks. 9 1/4" D.
- 80 SIXTEEN DINNER PLATES
Some chips and cracks. 9 1/4" D.
- 81 SIXTEEN PLATES
Some chips. 8 1/2" D.
- 82 EIGHT PIECES
Same pattern as #68 - #81, but without lion and snowflake. Mark $\frac{H \& C}{L}$
Two 15 1/4" oval platters, one 13 1/4" oval platter, five round 8 1/2" plates, chipped and worn.
- 83 ROUND COVERED VEGETABLE DISH
Brown and gold handles, pink border, base has chips.
- 84 TWO SQUARE COVERED VEGETABLE DISHES
Pink with brown handles, one chipped on rim.



- 25 85 **MEISSEN COFFEE SET**
Blue and gold. Fifteen saucers, thirteen footed cups, two 9" plates.
- 0 86 **MEISSEN BLUE & GOLD COFFEE SET**
Sixteen saucers, fifteen cups (one with handle missing), two 9" plates.
Photo.
- 0 87 **MEISSEN BLUE & GOLD COVERED JAR**
Rose painted on lid. Photo. $2\frac{1}{2}$ " H., $3\frac{1}{2}$ " D.
- 0 88 **DRESDEN PORCELAIN INKWELL**
Porcelain tray with two attached covered ink bottles, gold with rose and bird design. Rosebud finial. Photo.
- 0 89 **GOLD & BLACK PORCELAIN URN**
Female bust handles (one has been repaired), Greek boy medallion on front.
Photo. $10\frac{1}{2}$ " H.
- 0 90 **PAIR OF VICTORIAN FLARE VASES**
Blue and gold decoration, flower medallion, pink background. Photo.
 $11\frac{3}{4}$ " H.



300 165

FRUITWOOD SOFA
Straight back, sloping arms, square legs, upholstered in white material.
Photo.

225 166

BARREL-BACK LOW ARMCHAIR
Possibly Biedermeier. Sloping arms, fruitwood frame, upholstered in white material. Photo.

@ 125 167

FOUR FRUITWOOD SIDE CHAIRS
Rectangular back with openwork seats upholstered in white. Photo.



450 168

LIGHT MAHOGANY DRESSER

Three large drawers with shaped fronts, columnar sides, black painted square legs. Photo. 43 x 19 x 33" H.

1400 169

PAIR EMPIRE CANDELABRA

Female figure holder, three branches, stepped pedestal base. Photo. 21" H.

300 170

PAIR OF HIGH FRUITWOOD PLANT STANDS

13" Round top, three incurvate legs, platform base. Photo. 42" H.



275 171

MAHOGANY EMPIRE ARMCHAIR

Scroll arms, incurvate legs, shaped brown leather back and seat. Photo.

600 172

LARGE BLUE & WHITE CHINESE JARDINIERE

Band of dark blue around top, floral sprays around bowl. Photo. 24" H.

150 173

MAHOGANY ROUND STAND

Three scroll legs with floral drapes. 16 1/2" Dia., 12" H.

PAINTINGS



271 FRACTUR OF VASE OF FLOWERS IN PINE FRAME $7\frac{1}{2} \times 9\frac{1}{2}$ "

272 PAIR OF OIL PAINTINGS Signed Gennaro Favia, Italian School, Contemporary
Venice, canals and temples, gilt frames. 25×33

273 OIL PAINTING OF HARBOR SCENE)Cifrini 92
Three large figures in foreground, cubist-type gilt frame. $22\frac{1}{2} \times 23\frac{1}{2}$

274 PAINTING OF VENICE ON ARTIST BOARD
Gilt frame. 35×22



275 OIL PAINTING ON CANVAS
Chickens and ducks in farmyard, gilt frame. Photo. 57×37



- 276 EARLY COLORED PRINT
Dedication of Monument with soldiers and dignitaries. Large group on monument, gilt frame. 15 x 12
- 277 NEEDLEWORK PICTURE "Basket of Flowers"
Wood frame. 14½ x 16"
- 278 PAINTING ON CRADLED WOOD PANEL Beliaeff
Three-quarter picture of Christ holding staff and wearing red cloak, carved ogee black wood frame. 6 x 7½
- 279 TWO VICTORIAN OIL PAINTINGS ON CANVAS
One of mother beside lake, other is daughter beside lake, gilded frames. Photo. 4 3/4 x 7
- 280 OVAL PAINTING OF VICTORIAN GENTLEMAN WITH FULL BEARD
6" x 8"
- 281 PORTRAIT OF WHITE-HAIRED CLERGYMAN
Simple gilded frame. 14 x 17½
- 282 TWO COLORED ENGRAVINGS OF VENICE
Simple wood frames.
- 283 COLORED HORSE PRINT "Vasistar" Jordon & Barbot, Paris
- 284 JAPANESE COLORED PRINT
Bird amongst pink flowers.
- 285 FRAMED COLORED PRINT N. Currier 1845
"The Wreck of the Swallows", small folio.
- 286 PORTRAIT OF HENRY LIVINGSTON IN BLACK FRAME
10 x 14" approx.
- PORTRAIT OF PHILIP LIVINGSTON