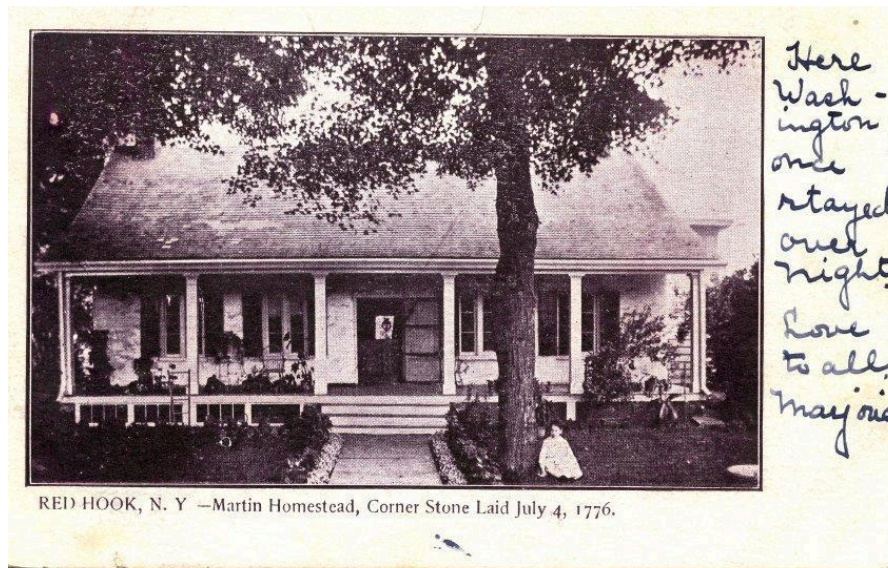


Martin/Cookingham House





RHWG: This early Colonial stone farmhouse was built in the summer of 1776 by Gottlieb Martin, grandson of a German Palatine immigrant. It is said a contingent of Continental soldiers passing through the hamlet on July 4th helped raise the frame. It has a more refined design than earlier Dutch houses, and the stones are covered in stucco, however it retains its original Dutch door in the frame.

RHHG: Occupied by his descendants until 1934. The property is still a working agricultural business, and many outbuildings and tenant houses still exist. Its simple and graceful proportions make it an attractive and functional home two centuries after its completion.

RHHWT: The orchards, out-buildings, and tenant houses within view were the northern border of the Village boundary established in 1894 in its incorporated survey.

Older photo of Martin/ Guerland house